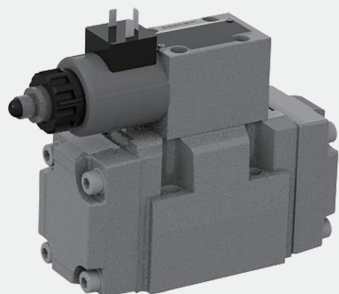


3-Way Proportional Pressure Reducing Valve

Model: 3DRE(M) and 3DRE(M)E... 7XJ



- ◆ Size 16
- ◆ Maximum working pressure 350bar
- ◆ Maximum working flow 125 L/min (size 10)
300 L/min (size 16)

Contents

Function description, sectional drawing	02
Models and specifications	03
Functional symbols	03
Technical parameters	04-05
Electrical connections	05-06
Characteristic curve	07
Component size	08-09
Control oil supply	10

Features

- 3 ways valve
- Operated by proportional solenoid with rotatable coil
- For subplate mounting
- Porting pattern to ISO4401
- Maximum pressure limitation, optional

Function description, sectional drawing

The 3DRE (M) and 3DRE (M) E type valves are solenoid operated pilot 3-way pressure reducing valves with pressure protective function for the actuator. They are used to reduce (P to A) and limit (A to T) the pressure of the system.

Structure:

The valve mainly consists of:

- Pilot valve (1) with proportional solenoid (2), and optional maximum pressure limitation (15)
- Main valve (3) with main spool (4)

Function:

- The reduced pressure is set through the pilot valve (1) in port A according to the set value.
- When pressure reducing in port P, the main spool (4) is held in the central position by springs (5) and (6) to prevent a start-up jump during valve working.
- The control fluid flows from orifice (7) via the flow controller (8) and chamber (11) to the throttle gap (9), and via channel (10) to the port Y. This connection is to be led into the tank at zero pressure.

Pressure reducing:

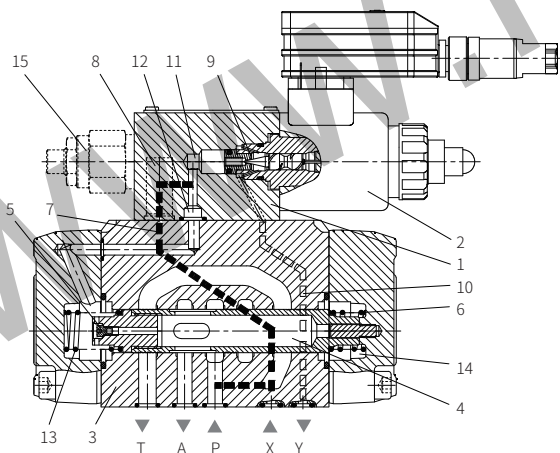
- Build-up of the pilot pressure in the chamber (11) as a function of the command value.
- The pressure is formed by nozzle (12) in the spring chamber (13) and move the main spool (4) to the right, then the fluid flows from P to A.
- The actuator pressure in port A is available in the spring chamber (14).
- Increase the pressure in port A to the set pressure of the pilot valve (1) to move the main spool (4) to the left. The pressure in port A is almost same with the set pressure at the pilot valve (1).

Pressure limitation:

- If the pressure in port A exceeds the set value pressure of the pilot valve (1), then the main spool (4) continue moves to the left.
- The connection from A to T is open and the pressure in port A is limited to the set command value.

Model 3DREM:

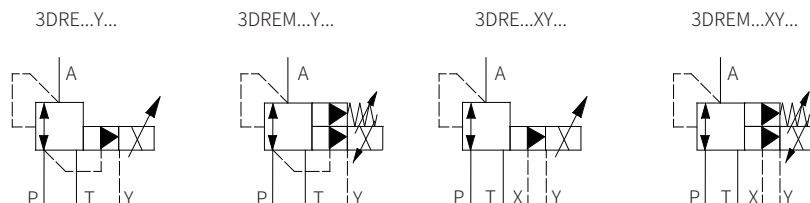
In order to prevent an impermissible high control current on the proportional solenoid by means of hydraulic restraint, which will inevitably cause excessive pressure in port A, then you can optional install a spring-loaded pressure limiting valve as a maximum pressure limitation (15). The maximum pressure limitation can be pre-set according to the corresponding pressure rating (see "Technical Data").



Models and specifications

3DRE			P	7X	J		G24			*
pilot proportional pressure reducing 3-way valve										
without max. pressure limitation with max. pressure limitation										
with external amplifier with internal amplifier										
size 10 size 16										
subplate mounting										
70 to 79 series (70 to 79 series installation and connection size unchanged)										
Rekith										
Max. set pressure up to 50bar up to 100bar up to 200bar up to 315bar (for size 10 only)										
more information in text sealing material										
No code= NBR seals V= FKM seals (consult for other seals)										
for 3DRE(M)E A1= command value 0 to 10V F1= command value 4 to 20mA										
electrical connection: for model 3DRE(M) K4= without plug in connector for model 3DRE(M)E K31S= with 1.5 meter cable and tin on the end K31C= with M12×1 aviation plug, 5-pin										
no code= 1600mA -8= 800mA										
G24= voltage 24V DC										
Y= pilot oil internal supply and external drain XY= pilot oil external supply and drain										

Functional symbols



Technical parameters

Overview			
Model	3DRE(M)		
Size	10	16	
Installation position	Optional, firstly horizontal		
Weight	Kg	7.5	10.3
Storage temperature range	°C	-20...+80	
Environment temperature range	°C	-20...+70	
Hydraulic			
Maximum working pressure	Oil port P	bar	350
	Oil port A	bar	315
	Oil port T	bar	315
	Oil port X	bar	350
	Oil port Y	bar	Separate and at zero pressure to tank
Maximum setting pressure in port A	Pressure stage 50	bar	50
	Pressure stage 100	bar	100
	Pressure stage 200	bar	200
	Pressure stage 315	bar	315
Minimum setting pressure ¹⁾	bar	<5	<4
Maximum pressure limitation ²⁾	Pressure stage 50	bar	70
	Pressure stage 100	bar	130
	Pressure stage 200	bar	230
	Pressure stage 315	bar	350
Maximum flow	L/min	125	300
Pilot flow	L/min	1.1	
Fluid	Mineral oil (HL,HLP) to DIN 51524, consult for other oils		
Fluid temperature range	°C	-20...+80	
Viscosity range	mm ² /s	15...380	
Max. allowable pollution degree of oil to	ISO 4406 (c) Class 20/18/15 ³⁾		
Hysteresis	%	±3 of maximum setting pressure	
Repeatability	%	< ±2 of maximum setting pressure	
Linearity	%	±3.5 of maximum setting pressure	
Manufacturing tolerance of command value	Command value	%	< ±1.5 of maximum setting pressure
	20%		
pressure characteristic curve	Command value	%	< ±5 of maximum setting pressure
	100%		
Step response Tu+Tg	10...90%	ms	< 140

1) In condition of no flow and command value is 0 in port A (see characteristic curve).

2) Unlimited adjustable, factory set.

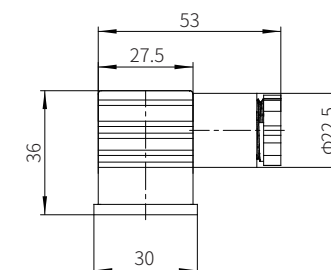
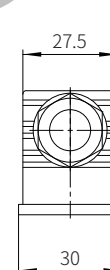
3) The oil must meet the cleanliness degree requested by the components in the hydraulic system. Effective oil filtration can prevent failure and increase the service life of the components.

Technical parameters

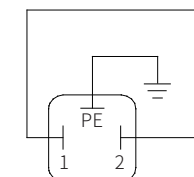
Electrical			
Model	"G24"		"G24-8"
Minimum control current	mA	≤100	
Maximum control current	mA	1600±10%	800±10%
Coil resistance	Cold value 20 °C	Ω	5.5
	Maximum hot value	Ω	8.05
Duty	%	100	

Electrical connections

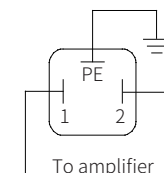
For model 3DRE/3DREM (with external amplifier)
The plug-in connector to DIN EN 175301-803



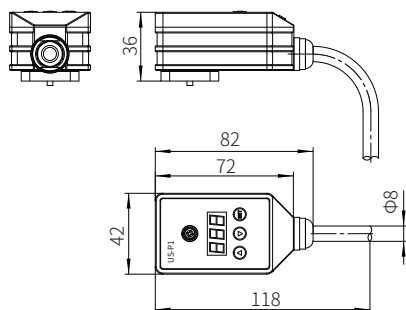
Connection at component plug



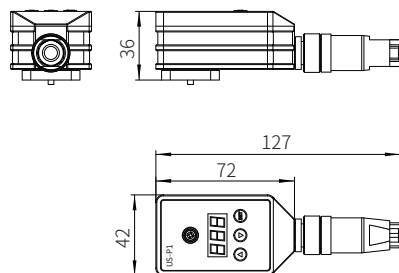
Connection at plug-in connector



Model 3DRE(M)E...7XJ/...K31S



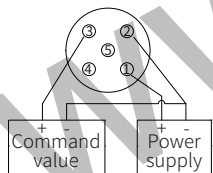
Model 3DRE(M)E...7XJ/...K31C



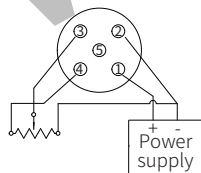
Terminal identification

M12 plug terminal number (K31C type)	Cable color (K31S type)	Terminal identification
1	Red	Power supply+
2	Black	Power supply -/ command value -
3	Yellow	Command value+
4	Blue	Reference voltage 5V
5	Green	-

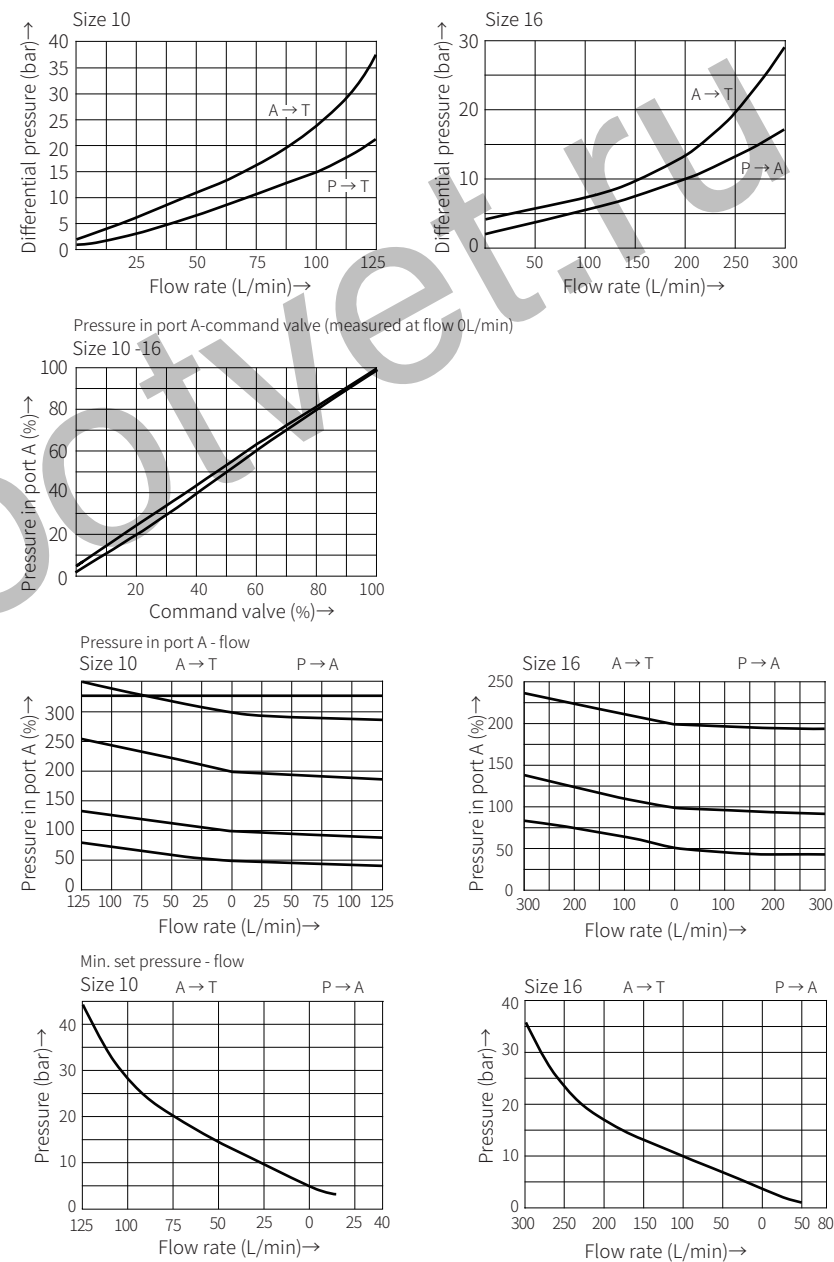
Connection example: PLC example input command

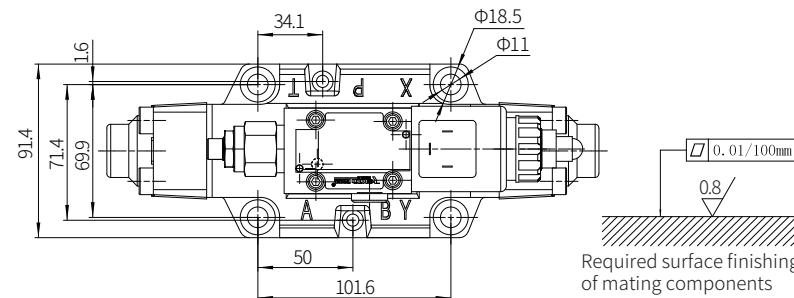
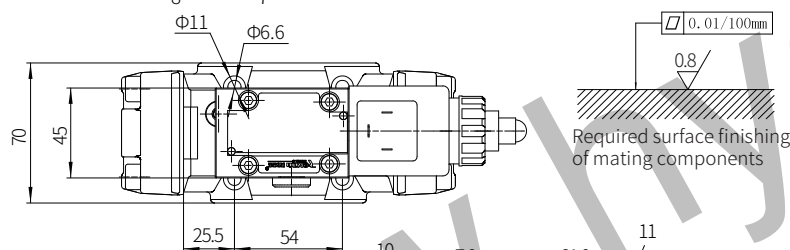
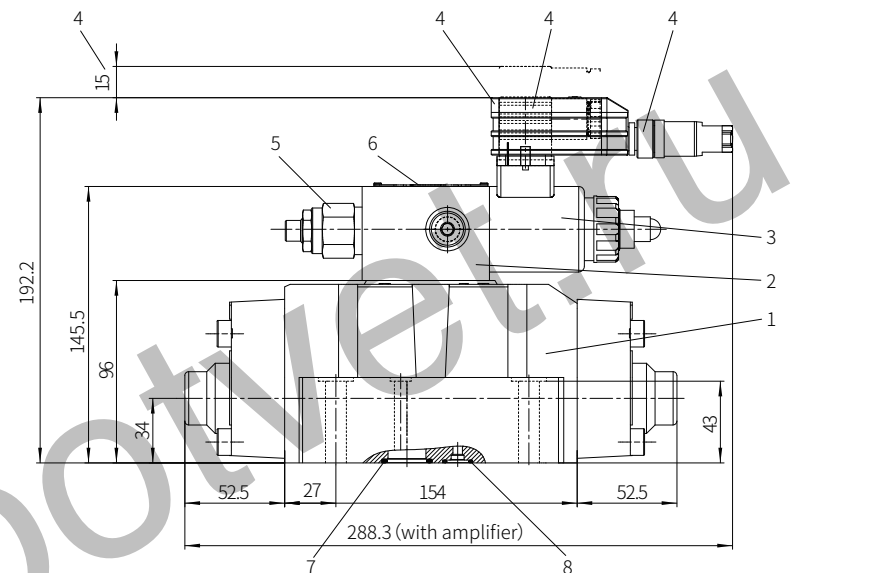
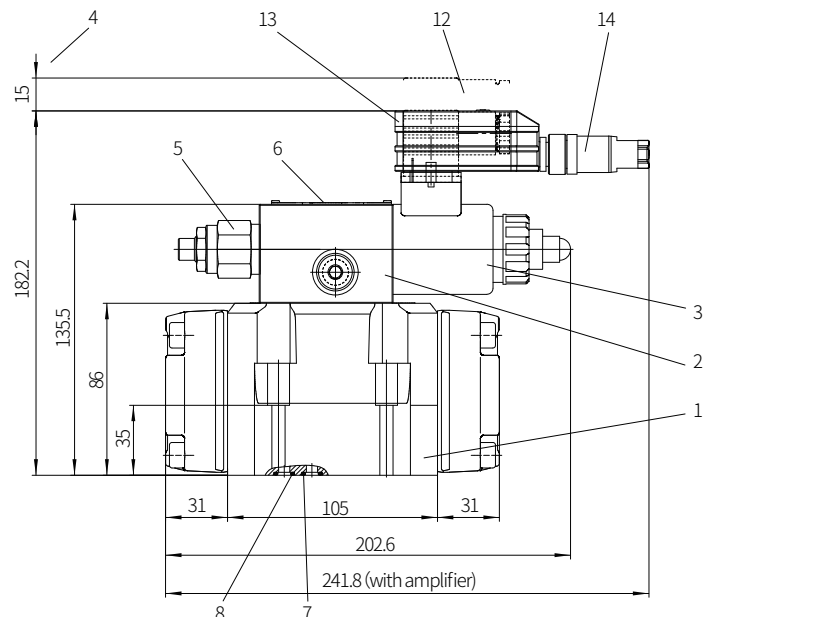


Connection example: Potentiometer input command



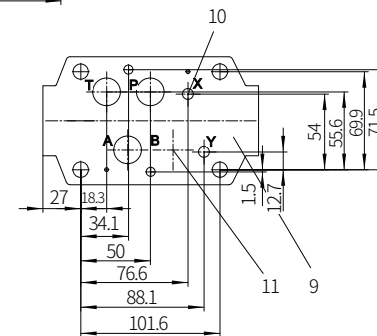
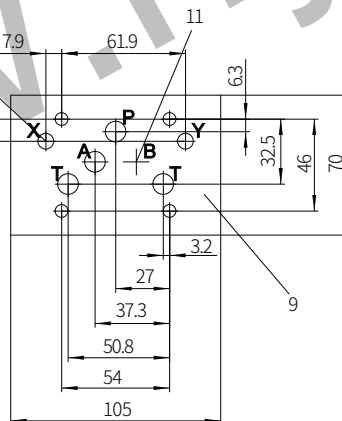
(Measured when using HLP46, $\vartheta_{oil}=40^{\circ}\text{C} \pm 5^{\circ}\text{C}$)





- 1 Main valve
- 2 Pilot valve
- 3 Proportional solenoid
- 4 Space required to remove the plug-in connector
- 5 Max. pressure limitation (model 3DREM...)
- 6 Name plate
- 7 O-ring 12x2 (for oil port P, A, B, T)
- 8 O-ring 12x2 (for oil port X, Y)
- 9 Machined valve mounting surface, porting pattern to DIN24340A, ISO 4401
- 10 When pilot oil supply internal (port Y), port X in the subplate must be closed
- 11 Port B in the subplate must be closed
- 12 Connector for model 3DRE (M)
- 13 Integrated electronic control with plug (3DREE, 3DREME)

- 1 Main valve
- 2 Pilot valve
- 3 Proportional solenoid
- 4 Space required to remove the plug-in connector
- 5 Max. pressure limitation (model 3DREM...)
- 6 Name plate
- 7 O-ring 12x2 (for oil port P, A, B, T)
- 8 O-ring 12x2 (for oil port X, Y)
- 9 Machined valve mounting surface, porting pattern to DIN24340A, ISO 4401
- 10 When pilot oil supply internal (port Y), port X in the subplate must be closed
- 11 Port B in the subplate must be closed
- 12 Connector for model 3DRE (M)
- 13 Integrated electronic control with plug (3DREE, 3DREME)



Control oil supply

Model 3DRE...-.../...XY Pilot oil external supply
Pilot oil external drain

In this version, the pilot oil is supplied from a separate control circuit (external).

The pilot oil drain is not directed to the port T of the main valve, but return to the tank via port Y (external).

Model 3DRE...-.../...Y... Pilot oil external supply
Pilot oil external drain

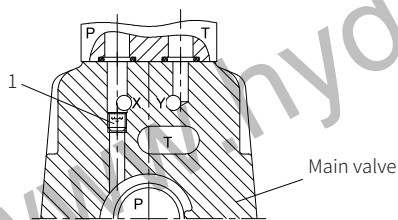
In this version, the pilot oil is supplied from port P of the main valve (internal).

The pilot oil drain is not directed to the port T of the main valve, but return to the tank via port Y (external).

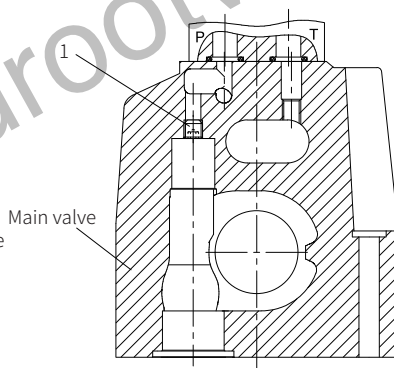
Port X in the subplate must be closed.

04

Size 10:



Size 16:



Pilot oil supply external: 1 Closed
internal: 1 Open

Pilot oil drain external

Pilot oil supply external: 1 Closed
internal: 1 Open

Pilot oil drain external