

AURIS

PIERCING & DIAMONDS



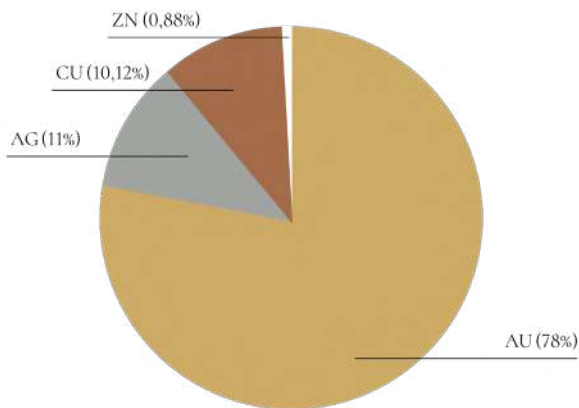
CONTENTS

| | |
|---|----|
| Metals components | 2 |
| Basic | 2 |
| Tops | 3 |
| Marchesa collection | 9 |
| Frontal Rings (<i>Septum/Daith</i>) | 16 |
| Side Rings (<i>Nostril/Helix</i>) | 19 |
| Cassiopea collection | 21 |
| Fancy cartilage tops | 30 |
| NOVIZIO BY AURIS | 31 |
| Crush diamond collection | 40 |
| Platinum collection | 42 |
| Nipple Barbells | 45 |
| Navel Curves Designs | 46 |
| Navel Curves Constructor | 46 |
| Threads, pins & hoops | 48 |
| Enchancing charms | 48 |
| Chains and charms | 49 |
| Gemcharts | 50 |
| Our gems | 51 |
| Warranty | 52 |
| Wholesale F.A.Q. | 53 |
| AURIS branded displays and stands | 54 |

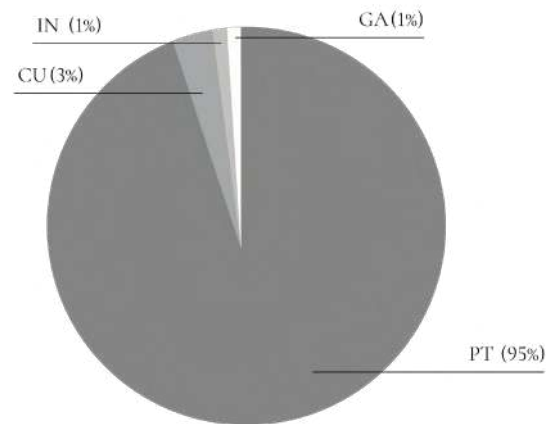


OUR METALS COMPONENTS, %

YELLOW GOLD



PLATINUM



WHITE GOLD

the same, but played with white rhodium

BASIC BARBELLS, LABRETS AND RINGS



BARBELL WITHOUT BALLS

BB-001

Length: 5-50mm

Threaded:

16g (1.2mm), 14g (1.6mm)

Threadless:

18g (1mm), 16g (1.2mm),

14g (1.6mm)



FIXED BACK LABRET

TL-001

4, 5, 6, 7, 8mm

Disc: 3.5mm

Threaded:

16g (1.2mm), 14g (1.6mm)

Threadless:

18g (1mm), 16g (1.2mm),

14g (1.6mm)



CLICKERING

BR-004

18g/16g/14g

5, 6, 7, 8, 9, 10, 11, 12mm

Bigger sizes on demand

OUR STUDS ARE ALL INTERNALLY THREADED OR THREADLESS

COMPATIBLE WITH ALL MAJOR

HIGH-END JEWELRY BRANDS:

INDUSTRIAL STRENGTH,

ANATOMETAL, LEROI, NEOMETAL, ETC.

TOPS



DISC DRAGON

TES-015-drg

-sml: 3mm
-med: 4mm
-big: 5mm



CLOCKWORK

TES-060

13.5x4mm
Screws can have
alternative gold color.
Pictured as: WHT/YLW



AURISBAR

TES-059

-sml: 9x2mm
-big: 12x2mm
Charm has our name
on all 4 sides. Top has
it on 3 sides.



FENRIS

TES-051

9.5x9mm
Can be bimetallic
(pictured as: YLW/WHT)
Can have right (-R)
or left (-L) orientation



VOLTAGE GEMMED

TEG-055

8.5x5mm
Gem: 1mm, chart #1, 3



3-PRONG-SET GEM

TEG-034

2, 2.5, 3, 3.5, 4mm
Gem: chart #1, 3



RA GEMMED

TEG-039

5mm
Gem: 1.5mm, chart #1, 3



NORTH STAR

TEG-018

7.5x3mm
Gem: princess 2mm,
chart #1, 3



ANTISTAR

TEG-077

8x2.5mm
Gem: baguette 2x3mm
Only WCZ



BAGUETTE PRONG

TEG-076

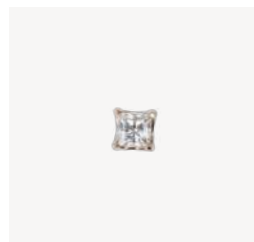
3x2mm
Gem: baguette 2x3mm
Only WCZ



TAPERED BAGUETTE

TEG-091

2.5x1.5mm
Gem: tap.baguette
1x1.5x2.5
WCZ or DIA only



PRINCESS PRONG

TEG-056

2, 3mm
Gem: princess 2 or 3mm,
chart #1, 3



DUNE

TEG-115

10x1.5mm
Gem: 1mm,
chart #1, 3



STARMOON

TEG-102

7mm
Gem: 2mm,
chart #1, 3



LEAF CAB

TEG-031-CAB-GRI

-med: 4x2mm
-big: 6x3mm
-large: 8x3.5mm
Gem: Marquis cabs,
chart #2
Pictured with: RMS, PRMT



TEARDROP CAB

TEG-032-GRI

-sml: 3x2mm
-med: 5x3mm
-big: 6x4mm
Gem: pears, chart #2
Pictured with RMS, PRMT



ELIZABETH

TEG-013

-sml: 6x4.5mm
Gems: 0.8mmx15 round
and 2x3mm pear
-med: 8x6mm
Gems: 1mmx13 round
and 3x5mm pear,
chart #1, 3



ELIZABETH CAB

TEG-013-CAB

-sml: 6x4.5mm
Gems: 0.8mmx15 round,
2x3mm pear cab
-med: 8x6mm
Gems: 1mmx13 round,
3x5mm pear cab.
round gems: chart #1, 3
pear gems: chart #2
Pictured with WCZ
and RMS



PALEO GEMMED

TEG-127

8x6mm
Gem: round 0.8mm x8;
1mm x4
chart #1, 3



ASTERIA

TEG-121

6x4mm
Gems: marquis 2x4mm,
round 0.8mmx7
chart #1,3



BRILLOVE

TEG-138

6.5x5mm
Gems: 0.8mmx16mm
chart #1,3



PALACE

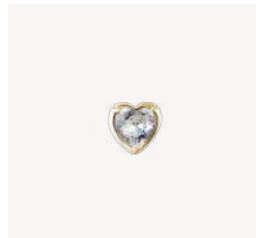
TEG-060

9.5x5mm
Gems: oval 5x3mm,
only WCZ
round 0.8, 1, 1.25mm,
chart #1, 3
Pictured with Rubies and
Diamonds

FLORES

TEG-080

11.5mm, bi or trimetallic.
Gems: marquis 2x4mmx8,
round 0.8mmx8, 2mm
chart #1, 2, 3, 4
2x4mm faceted or cab marquis



AMOUR GEMMED

TEG-101

6mm
Gem: 1.5mm round,
chart #1, 3
Pictured with WCZ

HEART

TEG-035-HRT

4mm
Gem: heart 3mm,
WCZ only

CUPID

TEG-038

-big: 5mm
Gem: heart cab,
5mm with chart #2

SUNRISE

TEG-074-GRI

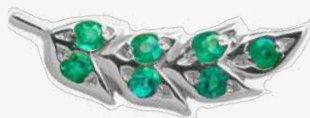
7x5.5mm
Gems: round 1.5mmx5
petals, 2.5mm center,
chart #1, 3
Pictured with Diamonds
and Ruby

SUNRISE CAB

TEG-074-MIX-GRI

7x5.5mm
Gems: round 1.5mmx5
petals, 2.5mm center,
chart #1/3, 2
Pictured with PRMT
and WCZ

-L



-R

FIREBIRD

TEG-017

-sml: 9x3mm

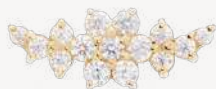
(0.8mmx6, 1mm gems, chart #1, 3)

-med: 10x3mm

(1mmx7 gems, chart #1, 3)

Can have right (-R) or left (-L) orientation.

Pictured in white gold with emerald, and in yellow gold with vvs diamonds



ICARUS

TEG-070

14x5mm

Gems: baguette
2x3mmx3

Only WCZ

KSIANA

TEG-086

14x5mm

Gems: round 1, 1.25, 1.5mm,
chart #1, 3



PRIUM

TEG-022

12x4.5mm

Gems: 2mmx2, 2.5mmx2,
3mm, chart #1, 3

PRIUM GRISANT

TEG-023-gri

11x4mm

Gems: 1.25mmx2, 1.5mmx2,
2.5mm, chart #1, 3





RASPUTIN

TEG-014A

10x7mm

Gems: 1mmx1l, chart #1, 3



RASPUTIN BLINK

TEG-014B

10x7mm

Gems: 1mmx1l, chart #1, 3



JUPITER

TEG-063-7

15x9mm

Gems: round 1mmx4,
1.2mmx2, 1.5mm
chart #1, 3



ASTRA

TEG-050

-tiny: 4.5mm (2mm center,
0.8mmx10 petals)
-sml: 6mm (3mm center,
1mmx10 petals)
-big: 8mm (4mm center,
1.5mmx10 petals)
Gems: all are round
faceted, chart #1, 3



ASTRA CAB

TEG-050-CAB

-tiny: 4.5mm (2mm
center, 0.8mmx10 petals)
-sml: 6mm (3mm center,
1mmx10 petals)
-big: 8mm (4mm center,
1.5mmx10 petals)
Gems: central round cab
chart #2 all the petals
are round faceted chart #1, 3
Pictured with PRMT



WIND ROSE

TEG-016-sml

9mm

Gems: 1.75mm round and
3x1.5mmx8 marquise,
chart #1, 3



SNOWFLAKE

TEG-024-BIG

8mm

Gems: 1mmx6, 2mm,
chart #1, 3

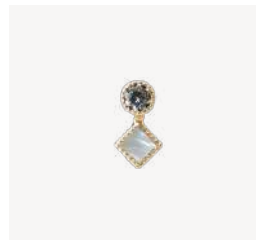


FLOWER

TEG-011A

-sml: 5mm

Gems: round 1.25mm x6;
1.5mm x1
-big: 6mm
Gems: round 1.5mm x6;
1.75mm x1

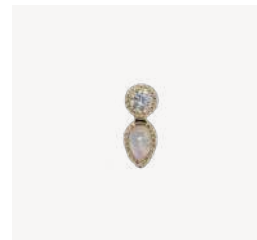


MEDAL MERCURY

TEG-037-CUP2-GRI

6x3mm

Gems: round 2mm,
chart #1, 3
Square cab 2mm,
chart #2
OR reversed princess,
chart #1, 3.
Pictured with WCZ/PRMT



MEDAL TEARDROP

TEG-032-CUP2-GRI

6x2.5mm

Gems: round 2mm,
chart #1, 3
Pear cab 2x3mm,
chart #2
Pictured with WCZ/RMS



IRIS

TEG-128

14x8mm

Gems: 1.5x2x4 and 1x1.5x2.5mm tapered baguette, only WCZ or DIA
1.5x3 and 2x4mm marquise, chart #1, 3
round 0.8, 1, 1.25mm, chart #1, 3



DIADEM

TEG-026A

-tiny: 5x3.5mm
Gems: round 0.8mmx6
1.25mmx3
-sml: 8x5mm
Gems: round 1.25mmx6,
1.75mmx3
chart#1, 3



ESTRELLA CAB

TEG-054-CAB-GRI

-sml: 4mm, 2mm gem
-med: 5.5mm, 3mm gem
-big: 7mm, 4mm gem
Gem: round cab,
chart #2
OR reversed, chart #1, 3
Pictured with RMS



ESTRELLA

TEG-054-FCT

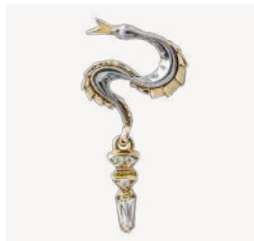
-sml: 4mm, 2mm gem
-med: 5.5mm, 3mm gem
Gem: round, chart #1, 3



BLOODRUNNER

TEG-114B

10mm+3mm
Gem: 1.5x3mm
chart #1, 3



SEA DRAGON

TEG-085

16.5x8.5mm
Bimetallic
Gem: 1x1.5x2.5mm
baguette, 0.8mm round,
chart #1, 3



BERZERK

TEG-073-DNG

10x7mm + dangle
Gems: 1mm round,
chart #1, 3
1.5x3mm marquise,
chart #3



ROYAL LILY CAB

TEG-068-CAB

-sml: 7x5.5mm
Gems: 1.5x3mm marquise,
chart #2
1.5mm round, chart #1, 3
-big: 9.5x7mm
Gems: 2x4mm marquise,
chart #2
2mm round, chart #1, 3
Pictured with WCZ/RQZ



YOUR FLIGHT

TEG-134

7x6mm
Gems: 0.8mmx3 round,
chart #1, 3



GEMIS

TEG-089

21x5mm
Gems: 0.8-1.5mm
Chart #1, 3



THREELEAF

TEG-012

-med: 3.5mm (1.5mm gems)
-big: 3.5mm (1.75mm gems)
Gems: round, chart #1, 3
Pictured with VVS Diamonds, Black Diamonds



FLAVI

TEG-004

18x8mm

Gems: 5x3mm pear,
1.25, 1.75, 2.5mm round, chart #1, 3

Can be bimetallic



GRISANT CAB

TEG-029-GRI

2, 2.5, 3, 4, 5, 6mm

Gems: round cabs,
chart #2

Pictured with PRMT



BULLET

TEG-029-BLT-GRI

3, 4mm

Gems: round cabs,
only RMS and RQZ

Pictured with RMS



PAVILION

TEG-029-RVS-GRI

2, 2.5, 3mm

Gems: only BKCZ
and chart #1 except DIA



WOODOO

TEG-131

8x3.5mm

Gems: tap. baguette

1x1.5x2.5mm,
only WCZ

round 0.8, 1mm
chart #1, 3



EXCLAMATION

TEG-129

7x3mm

Gem: baguette

1.5x2x4mm,
only WCZ

round 1.5mm
chart #1, 3



CRYSTAL JOINT

TEG-130

8x3mm

Gem: baguette

1.5x2x4mm
only WCZ



CRYSTAL BULLET

TEG-133

11x2.5mm

Gem: tapbaguette

2.5x1.5x1mm,
baguette 2.5x5mm
only WCZ

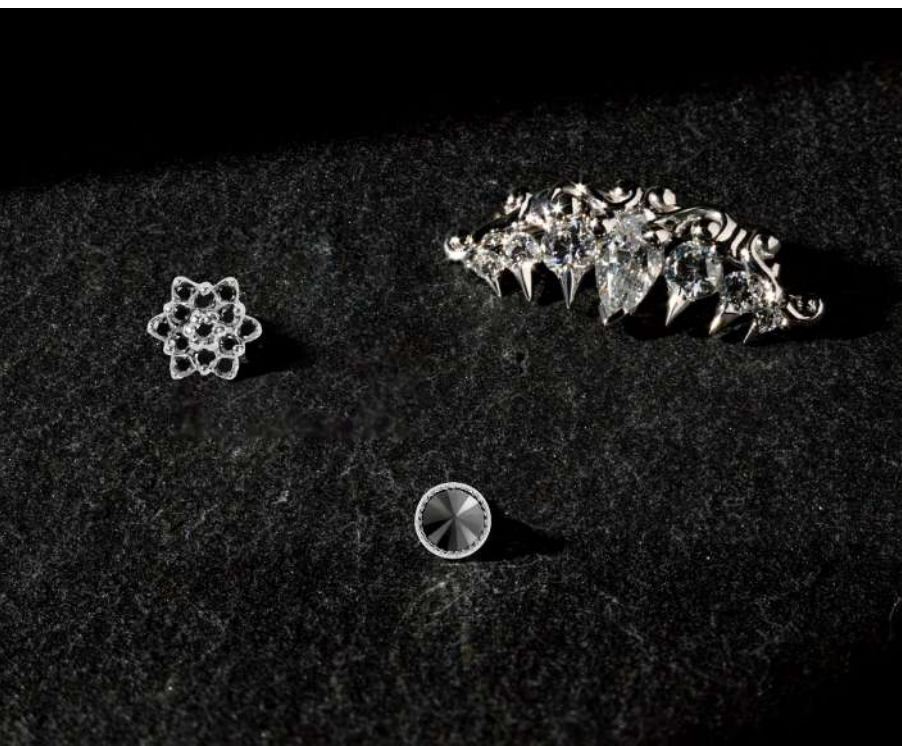


FLEUR-DE-AURIS

TEG-082

7x6mm

Gems: marquise 3x1.5mm,
round 1.25mm
chart #1, 3



AYSA

TEG-123

5x3mm

Gems: tap.baguette

2.5x1.5x1mm x2,
only WCZ



CHRYSANTA

TEG-079

5.5mm

Gems: 1mmx13 round,
chart #1, 3

MARCHESA

COLLECTION





MARCHESA EYE

TEG-161
11x3,5mm
Gems: marquise
1.5x3mm; 2x4mm
Chart #1, 3
Can have right (-R)
or left (-L) orientation.



MARCHESA PETALS

TEG-160
5.5x4.5mm
Gems: marquise
1.5x3mm; 2x4mm
Chart #1, 3
Can have right (-R)
or left (-L) orientation.



LEAF BEADED

TEG-088
-med: 4x2mm
-big: 6x3mm
Chart #1,3

AMPIR ARMOUR

FCT-021-ARM

24x17mm

Gems: marquise 3x6mm x4; 2.5x5mm x4;
2x4mm x4; 1.5x3mm x8

Chart #1,3



MARCHESA SMALL

SR-010A-SML

18g/16g/14g

Wearable height: 6mm

Wearable length: 8mm

Size: 11x17mm

Gems: Marquis 1.5x3mm

Chart #1,3



AVANT

TEG-090

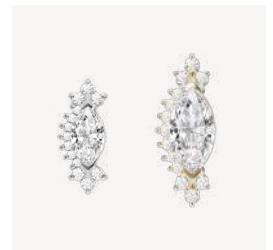
12x7mm

Gems: round 0.8mmx28,

1mmx2 and marquis

3x6mm

Chart #1, 3



ANASTASIA

TEG-028

-sml: 8x3mm

Gems: marquis 2x4mm,

round 0.8mmx6,

0.6mmx7

-med: 11x4.5mm

Gems: 0.8mm, 1mm

rounds, 3x6mm marquis

Chart #1, 3

MARCHESA

SR-010A

18g/16g/14g

Wearable height: 5mm

Wearable length: 8mm

Size: 12x19mm

Gems: marquis 2x4mm, chart #1, 3



ORION BELT

NR-027

18g/16g

Diameter: 6mm

Gems: marquis 1.5x3mm x2, 2x4mm x4, 2.5x5mm x2

Diameter: 8mm

Gems: marquis 1.5x3mm x4, 2x4mm x2, 2.5x5mm x2, 6x3mm

Diameter: 10mm

Gems: marquis 1.5x3mm x2, 2x4mm x4, 2.5x5mm x4, 6x3mm

Only WCZ or DIA

ROYAL LILY

TEG-068

-sml: 7x5.5mm

Gems: 1.5x3mm marquis, 1.5mm round

-big: 9.5x7mm

Gems: 2x4mm marquis, 2mm round

Chart #1, 3





MARCHESA 360 PENDANT

PEN-360A

28x20mm

Gems: marquise 2x4mmx22

Chart #1,3



MARCHESA 360 EARRING

HFR-360

20mm

Gems: marquise 2x4mmx22

Chart #1,3



MARCHESA 360 NAVEL

NCI-360

Length: 10, 12mm

Thickness: 1.6mm

Diameter of bottom top: 20mm

Gems: marquise 2x4mmx22

Chart #1,3





MARCHESA 360 PENDANT



ANASTASIA SMALL

MARCHESA EYE LEFT



MARCHESA



MARCHESA PETALS LEFT



ORION BELT

ORION BELT



AMPIR ARMOUR



ANASTASIA



MARCHESA PETALS RIGHT



MARCHESA 360 NAVEL

A EYE RIGHT

FRONTAL RINGS (SEPTUM/DAITH)



MARCHESA O

SR-010C

18g/16g

Diameter: 10mm

Gems: Marquis 1.5x3mm,
chart #1, 3

Size: 16.7x18.8mm



MARCHESA CAB

SR-010A-CAB

18g/16g/14g

Wearable height: 5mm

Wearable leght: 8mm

Size: 12x19mm

Gems: Marquis 2x4mm,
chart #2

Pictured with CHRT/PRMT



MARCHESA MIX

SR-010A-MIX

18g/16g/14g

Wearable height: 5mm

Wearable leght: 8mm

Size: 12x19mm

Gems: Marquis 2x4mm,
chart #1, 2, 3

Pictured with AMST-fct/PRPT



JUPITER

SR-003

14g

Diameter: 8mm

Size: 17x15.8

Gems: 1-1.5mm, chart #1, 3



HELENA

SR-024

18g/16g

Diameter: 8/9/10mm

Size: 16x13mm

Gems: 1.5mm, chart #1, 3



PROSPERO

SR-029

14g

Diameter: 10mm

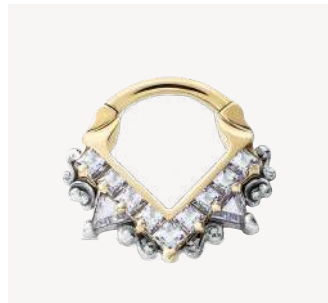
Gems: 2, 3mm cabs, chart #2

Triolin 3mm, tapers 1x2.5mm

WCZ only

Pictured: with PRMT and WCZ

Can be bimetalic



COBRA

SR-028

18g/16g

Wearable size: 6mm

Size: 13.3x12.2mm

Gems: WCZ only

Can be bimetalic



LA PHENICHE

SR-007-GEM

18g/16g

Diameter: 8mm

Size: 18.7x14.6mm

Gems: Marquis 1.5x3mm,
round 1.25, chart #1,3



CENTURION

SR-008

18g/16g

Diameter: 8, 9, 10.5, 12mm

Gems: 1mm, chart #1,3

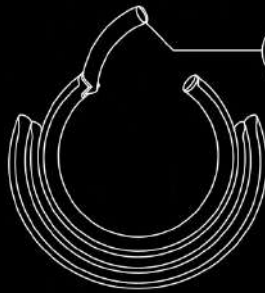
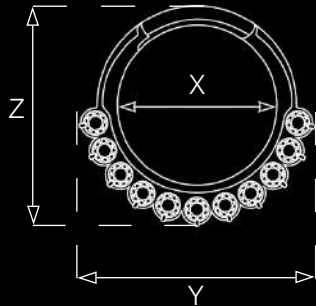
Size: Add 2mm to the diameter

Pictured with Rubies/Diamonds
Has 3 rows or gems, front, side,
back, therefore, can be reversible

ALL OUR RINGS ARE AVAILABLE IN:

HOW TO MEASURE?

Inner (wearable)
Diameter: X mm
Size: YxZ mm



18g

16g

14g

1mm

1.2mm

1.6mm

This size applies
only to some our rings

Comes only with a hinge closure!

NO SEAM, NO DAMAGE!





TIARA

SR-016

18g/16g

Diameter: 7, 8, 9, 10mm

Size: Add 5mm to the diameter

Gems: 1.25mm, chart #1, 3



TIARA BIG

SR-016-BIG

18g/16g

Diameter: 8mm

Size: 13.5x11.5mm

Gems: 2.5mm, chart #1, 3



TIARA LARGE

SR-016-LRG

18g/16g

Diameter: 9mm

Size: 15x13.5mm

Gems: 3mm, chart #1, 3



TIARA LARGE CAB

SR-016-LRG

18g/16g

Diameter: 8, 10mm

Size: add 7mm to the diameter

Gems: 3mm cab, chart #2



SETH BAGUETTE

SR-015-BGT

18g/16g

Size: 12x12mm, Wearable: 6mm

Gems: 1.25, 1mm, chart #1, 3



1-CHAIN RING

SR-020-yu

18g/16g/14g

Diameter: 5, 6, 7, 8, 9, 10, 12mm



2-CHAIN RING

SR-021-yu

18g/16g/14g

Diameter: 5, 6, 7, 8, 9, 10, 12mm



3-CHAIN RING

SR-022-yu

18g/16g/14g

Diameter: 5, 6, 7, 8, 9, 10, 12mm

*On photo - Tiara Large

SIDE RINGS (NOSTRILS/HELIX)



CASSIOPEA-B REVERSED

NR-005B-RVS

18g/16g

Diameter: 5, 6, 8, 9, 10mm

Gems: reversed 1.5mm, chart #1, 3
chart #2 under request

Pictured with reversed Emeralds



BLEACH-1

NR-003-1gem

16g/14g

Diameter: 5, 6, 7, 8, 9, 10, 11, 12mm

Gem: 1mm, chart #1, 3



BLEACH-3

NR-003-1gem

16g/14g

Diameter: 5, 6, 7, 8, 9, 10, 11, 12mm

Gems: 1mmx3, chart #1, 3



NATARAJA

NR-041

18g/16g

Diameter: 8, 10mm

Height: from 11mm to 22mm



ELLADA

NR-007-eld

18g/16g

Diameter: 8mm



CERBERUS

NR-014

18g/16g

Diameter: 5, 6, 8, 10mm



CROSS NOSRTIL RING

NR-019

18g

Wearable: 8mm

Gem: 1mm, chart #1, 3

When you want to start your nostril with a ring, but the barbell has to be straight!

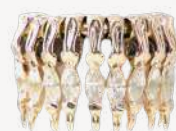


CASSIOPEA AURIS

NR-020

18g/16g

Diameter: 8, 10mm



MAKAREASE

NR-036

18g/16g/14g

Diameter: 8mm

Size opened: 25x18mm: Size closed: 13.3x12.2mm

Gems: Marquis 1.5x3mm x10, chart #1,3

This statement piece has been designed to adorn coinslot, but looks good in a single flat piercing as well. The charms with spikey marquise fix around the ear due to tiny built-in magnets! So it always wraps the ear tight.



CASSIOPEA COLLECTION

CASSIOPEA BY AURIS

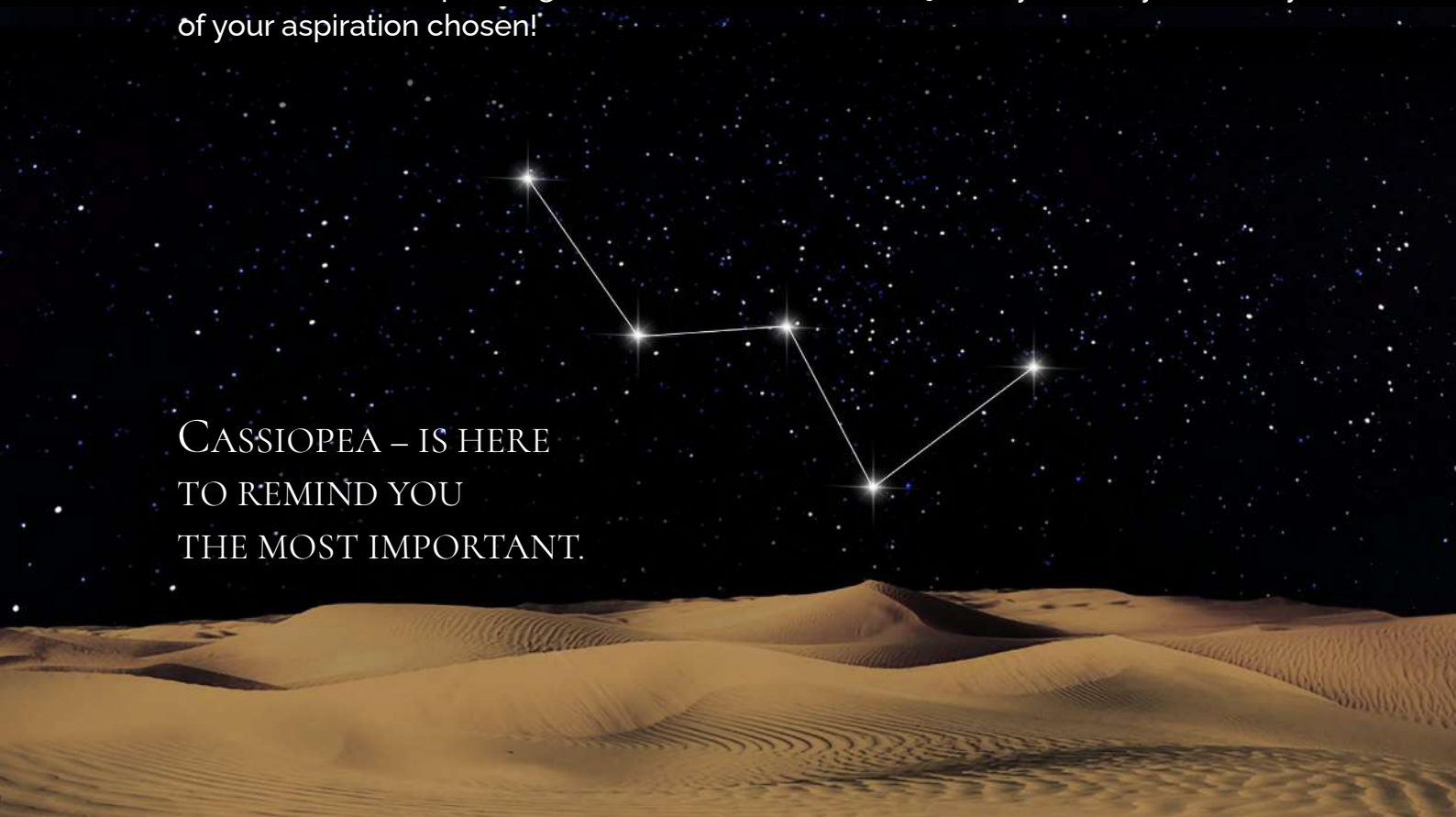
INSPIRATION

When creating the Cassiopea collection, AURIS designers were inspired by the manifestations of such human qualities as determination, perseverance and will power. These qualities are necessary for self-realization and achievements success in any area of life. And we believe that they exist in every person!

- ✓ Look back at your own history.
- ✓ Remember the achievements of which you are truly proud. It doesn't matter if they are visible for the outside world or if they are victories that happened inside of you. The main thing is that they are important specially for you.
- ✓ Realize that none of this would have happened without your determination, your persistence and your willpower.
- ✓ Claim these qualities and make them part of your strength!

Jewelry from the Cassiopea AURIS collection is deeply imbued with this idea. The name of the collection was chosen for a reason: Cassiopea is a constellation that remains visible throughout Russia all year round. Some people would say that its stars make a hand pointing forward. And we want our jewelry to always remind you of your aspiration chosen!

CASSIOPEA – IS HERE
TO REMIND YOU
THE MOST IMPORTANT.



DESIGN

The main techniques used by AURIS designers to convey the mood of the collection:

▶ STRAIGHT LINES

They symbolize life balance and the middle path, when a person does not bend under circumstances, but also does not bend against them, but simply does not allow them to bend him.

▶ RAILING STONES SET UP

It is one of the most reliable ways of fixing small inserts. Stones are inserted into the formed «rail» and are clamped in between. Practically not protruding above the metal surface, they are maximally protected from external influences. The owner of such jewelry does not have to worry about the stone falling out or tarnishing.

And just as small stones line up in these «rails», a purposeful person does not turn off his path, does not turn out from difficulties and takes a small step every day on the way to great achievements.

▶ GRISANT SETTING

In professional jewelry art, this type of finishing is called cornising, the process of applying indentations with a special tool on the surface of the product.

The resulting beautiful pattern can turn even a single stone into a piece of jewelry.

For diamonds and cubic zirconia, this pattern seems to extend the rays created by the play of light on their facets. In the Cassiopea collection, the grisant symbolizes the imprint of the unique pattern of your personality on your path.

STYLE

Not every model can say that it suits and pleases everyone, but Cassiopea is one of them. Its style combines airy crystals and geometric fastening. And this design has gathered around itself a whole collection of *Cassiopeia's Transformations*. This ring accepts the challenge to satisfy any request - from the most modest to the most sophisticated.



Design for those who want to show that they can afford a little rebellion without surpassing the limits of a status classic. The most popular version with white diamonds is a quiet luxury for those who are used to the best of the possible,



CRUSH CASSIOPEA

NR-017-CRD

18g/16g

Diameter: 6, 7, 8, 10, 11mm

GLASS CASSIOPEA

NR-017

18g/16g

Diameter: 6, 7, 8, 10, 11mm

CASSIOPEA

NR-005

18g/16g

Diameter: 5, 6, 7, 8, 9, 10, 11, 12mm

Gems: round 1.25mm, chart #1, 3



CASSIOPEA BETA

NR-015

18g/16g

Diameter: 8, 9, 10mm

Gems: round 1.25mm, chart #1, 3

For those who want to rest assured that their piercing will be noticed. Strict luxury: parallel lines, clarity, consistency and joyful sparkle of gemstones



CASSIOPEA TAU

NR-016

18g/16g

Diameter: 5, 6, 7, 8, 10 mm

Gems: round 1.25mm, chart #1, 3

More detailed and pretentious. For those who want to add a scent of exotic or epatage to their image.

NEW TYPE OF JEWELRY:

The crown of the Cassiopea collection has manifested the birth of a new type of jewelry for piercing, AURIS Cuff™

Our designers pay special attention to customer feedback, and cuffs have been requested from AURIS a lot. However, we did not want to produce just another cuff which would painfully squeeze the ear and one day get lost. And given the rather high cost of jewelry made from precious materials, this would be especially unpleasant for our clients.

Therefore, we created the jewelry which has the pros of both. Unlike a regular cuff, AURIS Cuff™ has to be fixed in the piercing hole with a classic piercing stud, but the most of jewelry weight is distributed on the hook which lays on the forward helix curve. And this support gives much more space for styling; since now piercing jewelry is not limited with a small weight!



Sense of Purpose

CASSIOPEA AURIS CUFF™

The first AURIS Cuff is a straight line of stones that envelops the ear. Same as ring, but with one elongated to a straight line end.

The 2-in-1 decoration can be flipped around without removing it from piercing, so it fits the ear on the other side and gives you an alternative way to wear this jewel! However, individual fitting with a piercing stylist will tell you better about it.



CASSIOPEA AURIS CUFF

FCT-017-1

16g

Size: 25.5mm

Gems: round 1.25mmx24, chart #1, 3





Of course, the AURIS designers would not stay themselves if they did not approach the creation of the collection in a comprehensive manner. A win-win option for creating nice jewelry look is to use one accent piece (in this case, a ring or Auris cuff) and several complementary ones. For this purpose, the Cassiopea collection has been supplemented with tops: *Grisant Cup*, *Gemmed Line* and *Cup charmed with Line*. This makes the collection a powerful tool in the hands of a competent piercing stylist.





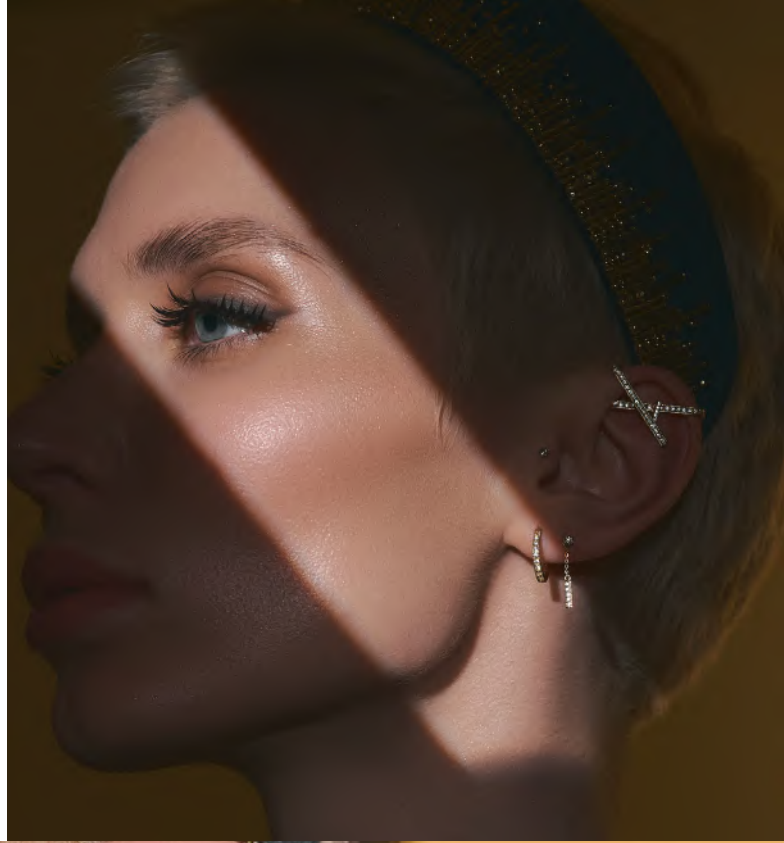
GRISANT CUP

TEG-035-GRI

1.5, 2, 2.5, 3, 4, 5mm

Gems: round, chart #1, 3

Pictured with VVS and Black Diamonds
and Rubies



GEMMED LINE

TEG-047

-sml: 6x2mm. Gems: 1mmx5

-big: 12x2mm. Gems: 1mmx9

Gems: round 1mm, chart #1, 3



FANCY CARTILAGE TOPS

These ends have been designed in attempt to bring body piercing into the new niche - Niche of high class and complex luxury jewelry.

Some of these tops can be done in at least three options - as a regular top, as a top with two threads which prevents rotating the piece (-2pt), and as industrial element (-ind).



ELFRAN

FCT-001

14g/16g/pin

25x20.5mm

Dangle gem: 1.5mm round,
chart #1, 3

Can have left (-L) and right (-R) orientation



FOXTRAP

FCT-002

14g/pin

21x6.5mm



it is time to be yourself

Novizio by AURIS is a separate jewelry line, which keeps the signature quality and detailing of main brand line and delivers its special mood.

| | NOVIZIO | AURIS |
|--------------------------------|---|--|
| Manufacturing | Our own AURIS jewelry facility | |
| Materials | 14k gold (white, yellow, rose) | 14k white gold, 18k yellow and rose gold, platinum |
| Inlays | CZs (only white), synthetic opals (gemchart #4) | Precious stones (gemchart #1), CZs (gemchart #3), natural stones (gemchart #2) |
| Jewelry and locks types | Threaded/threadless tops (18/16g, 12/14g, PIN), clicker rings | Threaded/threadless tops (18/16g, 12/14g, PIN), clicker rings, labrets, barbells (internally threaded, threadless) |
| Designs | Focused more on simple geometric shapes, minimalism, symbols. | Complex shapes, rare and playful gems, variety of textures and finishes. |
| Customisation | - | Allows to customize our classic designs with more colors, extra chains, charms and textures |
| Service | Lifetime warranty for manufacturing defects | |
| Manufacturing times | Less than 1 month | Up to 2 months |
| Pricing | Budget and medium value | Upper-medium and premium segment |

Thus, minimalism lovers may interact with Novizio like with a separate brand, whilst these who prefer more complex details, can take Novizio line as a pretty minimalistic addition to their fancy projects and a first step to their future luxury.

TOPS WITHOUT GEMSTONES

Ball



TES-028
2, 2.5, 3 mm

Ball Hollow



TES-028
4, 5mm

Tribead



TES-007
3mm

Glass Disc



TES-015
3, 4, 5, 6mm

Water Disc



TES-015-WAT
3, 4mm

Amour Contour



TES-016-CNT-BIG
6mm

Water Rhombus



TES-019-WAT
3, 4mm

Watermoon



TES-022-WAT
-med: 5.3x3mm
-big: 7.5x3.3mm

Glass moon



TES-022-PLN
-med: 6x3mm
-big: 7.5x4.3mm

WaterLine



TES-024-WAT
-sml: 6x1.5mm
-med: 9x2mm
-big: 12x2mm

Glass Line



TES-024
-sml: 6x1.5mm
-med: 9x2mm
-big: 12x2mm

Horus



TES-032
3.7x3.7mm

Cross



TES-038
- med: 7x4.8mm

Dagger



TES-039
-big: 10.5x3.6mm

Voltage



TES-034
-med: 8.5x5mm
-big: 14x5mm

Unicorn



TES-036

10,5x8mm
Can have right (-R)
or left (-L) orientation

Phoenix



TES-013

-sml: 7mm
-med: 10mm
Can have right (-R)
or left (-L) orientation

Paleo



TES-018

-med: 4x3mm

Seth



TES-033

3.7x4.5mm

Battle axe



TES-045

10x7 mm
Can have right (-R) or
left (-L) orientation

Just O top



TES-044

5.5, 6, 7, 8mm

SX



TES-056

4x8mm

Nefertiti



TES-050

1.5x9mm

Boeing



TES-048

6.5x5mm

Marianna



TES-023

-sml: 4.5mm
-med: 6mm

Teardrop plano



TES-025

-med: 2.5x5mm
-big: 3x6mm

TX



TES-055

-sml: 1x6mm
-big: 2x10mm

Parenthesis



TES-026

-sml: 8x1.5mm
-med: 9x2mm
-big: 11x2mm

Ohm



TES-014-BIG

6mm



NOVIZIO

GEMMED TOPS

Moon priestess 5-gem



TEG-006-B

7x3.7mm
Gems: round 1mm
WCZ only

Rock Star



TEG-009

6x6mm
Gem: round 1.5mm
WCZ only

Flower Bezel



TEG-011B

-sml: 5mm
Gems: round 1.25x6
1.75mm, 1.25mm
-med: 6mm
Gems: 1.5mmx6, 2mm
WCZ only

Horus gemmed



TEG-040

- sml: 3mm
Gem: round 1.25mm
- med: 4mm
Gem: round 1.5mm
WCZ only

Madalin



TEG-044

10x4mm
Gems: round 1.25mm
WCZ only

Moon priestess 1-gem



TEG-006-A

7.5x2mm
Gem: round 1.25mm
WCZ only

Moonheart



TEG-021

10x4mm
Gems: round 1.5x2mm,
2mmx2, 2.25mm
WCZ only

Seth gemmed



TEG-041

- sml: 3mm
Gem: round 1.25mm
- med: 4mm
Gem: round 1.25mm
WCZ only

FRONTAL RINGS (SEPTUM/DAITH)

Trio



SR-004-SML

18g/16g

Diameter: 6, 7, 8, 10mm

Size: 12.8x11.5mm,
12.5x11.9mm, 15.7x14.1mm

Trio big



SR-004-BIG

14g

Diameter: 7, 8, 9, 10mm

Size: 14x12.3mm,
14.6x12.5mm, 14.9x13.5mm
15.4x14.4mm

Ariadna



SR-019

18g/16g

Diameter: 8, 10mm

Size: 10.5x12.5mm

Aspiration



SR-009

18g/16g

Diameter: 6, 8mm

Desert Sun



SR-102

18g/16g

Diameter: 6, 7, 8, 10mm

Size: 11.9x10.4mm, 13.2x11.4mm,
15.5x13.3mm, 18.2x15.7mm

Marchesa-N



SR-010-N

18g/16g/14g

Wearable size: 8.2x5mm

Size: 20.9x12.7mm

SIDE RINGS (NOSTRILS/HELIX)

Cassiopea Omega



NR-018

18g/16g

Diameter: 8, 9, 10mm

Cassiopea Glass



NR-017

18g/16g

Diameter: 6, 7, 8, 10, 11mm

Excitement



NR-001

18g/16g

Diameter: 6, 8, 10mm

14g

Diameter: 8mm

Vera



NR-007

18g/16g

Diameter: 6, 7, 8, 9, 10mm

Artemida



NR-013

16g

Diameter: 9, 10mm

Gems: princess 2mm

WCZ only

Freya



NR-008

18g/16g

Diameter: 8, 10mm

People tend to give the Novizio jewelry their personal meaning, symbolism, and keep wearing it as a reminder about simple but important things, such is warmth, sincerity, love, openmindedness, kindness and so on.

AURIS mission is to make everyone come to the feeling that the most valuable luxury in our world is to be yourself. And **NOVIZIO** is a perfect teammate to begin this beautiful way to luxury, as long as life.



CRUSH DIAMOND COLLECTION

The craft of Italian goldsmiths made us smile rad from the first sight when we met this texture at traditional jewelry expo.

That day we had got to know: we need to introduce this texture to body piercing world! And so we did! We call it CrushD in a short way. It has nothing in common with real diamonds except good sparkling.

Fancy outfit with noble tiny grain new texture looking like a dust of crushed diamonds on the metal surface!

This texture is different and applied manually. It can be an option for all flat gemless tops, for some gemmed tops with flat surfaces, for some tops with volume and clickers like Vera, Aspiration, Desert Sun and so on.

This is all we have as a catalogue, but this is not all we can CrushD! Ask your manager about availability of the desired design with this noble texture!



CRUSH DISC
TES-015-CRD
3, 4, 5, 6mm



CRUSH VOLTAGE
TES-034-MED-CRD
8x4mm



CRUSH PALEO
TES-018-MED-CRD
4x2.5mm



CRUSH TEARDROP
TES-025-CRD
- med: 5x2.5mm
- big: 7x3mm



CRUSH MARIANNA
TES-023-CRD
-sml: 4.5mm
-med: 6mm



CRUSH HORUS
TES-032-CRD
4mm



CRUSH JUST O
TES-044-CRD
-sml: 6mm
-med: 7mm
-big: 8mm
This is the overall size, not the inner diameter



CRUSH PARANTHESIS
TES-026-CRD
-med: 9x2mm
-big: 11x2mm



CRUSH CROSS
TES-038-MED-CRD
7x5mm



CRUSH MOON
TES-022-CRD
-med: 6mm
-big: 7mm



CRUSH SETH
TES-033-CRD
4mm



ASPIRATION CRUSHD
SR-009-CRD
18/16
6, 8mm



VOLARLINE-1
TES-066-1-CRD
-sml: 6x1mm
-med: 9x2mm
-big: 12x2mm
Can have crushD or matt texture



VOLARLINE-3
TES-066-3-CRD

CRUSH LINE
TES-024-CRD
-sml: 6x1.5mm
-med: 9x2mm
-big: 12x2mm



VOLAR-1
NR-043-1-CRD
18/16g
Diameter: 6, 7, 8 ,10, 11mm
Can have crushD or matt texture



VOLAR-3
NR-043-3-CRD
18/16g
Diameter: 6, 7, 8 ,10, 11mm
Can have crushD or matt texture

PLATINUM COLLECTION



ROYAL LILY

TEG-068

-sml: 5x7mm

Gems: 15x3mm marquise, 15mm round

-big: 7x9mm

Gems: 2x4mm marquise, 2mm round

Chart #1, 3



ROYAL LILY CAB

TEG-068-CAB

-big: 7x9mm

Gems: 2x4mm marquise, chart #2, 4

2mm round, chart #1, 3



ELIZABETH

TEG-013

-sml: 6x4.5mm

Gems: 0.8mm round and 2x3mm pear, chart #1, 3

-med: 6x8mm

Gems: 1mm round and 3x5mm pear, chart #1, 3



ELIZABETH CAB

TEG-013-CAB

-med: 6x8mm

Gems: 1mm round, 3x5mm pear cab.

round gems: chart #1, 3

pear gems: chart #2



RASPUTIN BLINK

TEG-014B

10x7mm

Gems: 1mm, chart #1, 3



PRIUM

TEG-022

12x4.5mm

Gems: 2, 2.5, 3mm, chart #1, 3



PRIUM GRISANT

TEG-023-gri

12x4.5mm

Gems: 1.25mmx2, 1.5mmx2, 2.5mm chart #1, 3



CABOCHON GRISANT

TEG-029-GRI

2.5, 4, 5mm

Gems: round cabs, chart #2

Pictured with PRMT



CABOCHON BULLET

TEG-029-BLT-GRI

3, 4mm

Gems: round cabs, only RMS and RQS

Pictured with RMS



PAVILION GRISANT

TEG-029-RVS-GRI

2.5, 3mm

Gems: only BKCZ and chart #1 except DIA



FIREBIRD

TEG-017

-med: 10x3mm

(1mm gems, chart #1, 3)

Can have right (-R) or left (-L) orientation



3-PRONG-SET GEM

TEG-034

2, 2.5, 3, 4mm
Gem: chart #1, 3



GRISANT CUP

TEG-035-GRI

1.5, 2, 2.5, 3, 4, 5
Gems: round chart#1, 3
Pictured with Diamond,
Ruby and Black Diamond



ASTRA

TEG-050

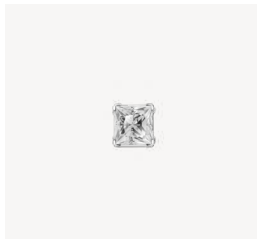
-sml: 6mm (3mm center,
1mm petals)
-big: 8mm (4mm center,
1.5mm petals)
Gems: all are round
faceted, chart #1, 3



ASTRA CAB

TEG-050-CAB

-big: 8mm (4mm center,
1.5mm petals)
Gems: central round cab
chart #2, 4 all the petals
are round faceted chart #1, 3
Pictured with PRMT



PRINCESS PRONG

TEG-056

2, 3mm
Gem: princess 2 or 3mm,
chart #1, 3



SUNRISE

TEG-074-GRI

5.5x7mm
Gems: round 1.5mm
petals, 2.5mm center,
chart #1, 2, 3
Pictured with Diamonds
and Ruby



CASSIOPEA

NR-005

8 mm
Gem: round 1.25mm x12,
chart #1, 3



MARCHESA

SR-010A

18g/16g/14g
Wearable height: 5mm
Wearable length: 8mm
Size: 12x19mm
Gems: marquis 2x4mm, chart #1, 3



NIPPLE BARBELLS



BLISS

NB-008

Length: 9-25mm

Thickness: 1.6mm

Threadless only

Gems: -med: 3mm round

-big: 4 mm round, chart #1, 3



SUNRISE NIPPLE

NB-014

Length: 9-25mm

Threadless only

Thickness: 1.6mm

Gems: 2.5mm round, chart #1, 2, 3

1.5mm round, chart #1, 3



ROYAL LILY NIPPLE

NB-013-BIG

Length: 9-25mm

Thickness: 1.6 mm.

Threadless only

Gems: 2x4mm marquis, 2mm round, chart #1, 3



WINK

NB-009

Length: 9-25mm

Thickness: 1.6mm

Threadless only

Gems: 4mm cabochon

Chart #2

Pictured with PRMT



BARBELL WITH BALL

BB-001-TES-028

Length: 5-50mm

Threaded:

14g (1.6mm)

Threadless:

14g (1.6mm)

Balls: 3, 4, 5mm



JUPITER NIPPLE

NB-011

Wearable: 11mm

Thickness: 1.6mm

Size: 21x16mm;

Gems: round 1, 1.25, 1.5, 2mm, chart #1, 3



AURORA

NB-002

Wearable: 11x6mm

Size: 17x11mm

Wearable: 15x5mm

Size: 19.5x10.9mm

Thickness: 1.6mm

Gems: 2mm round, chart #1, 3



MARCHESA NIPPLE

NB-010-2

Wearable: 15x8mm

Size: 28x16.8mm

Thickness: 1.6mm

Gems: chart #1, 3

NAVEL CURVES DESIGNS



CLASSICA

NC-002
Length: 8mm
Thickness: 1.6mm
Gems: 4 and 6mm round
Gemchart #1, 3



LORAINE

NC-009-GRI
Length: 11mm
Thickness: 1.6mm
Gems: 4, 6mm round
Gemchart #1, 3



DEMENSION

NC-011
Length: 10mm
Thickness: 1.6mm
Gems: 2.5x5mm baguette
WCZ only

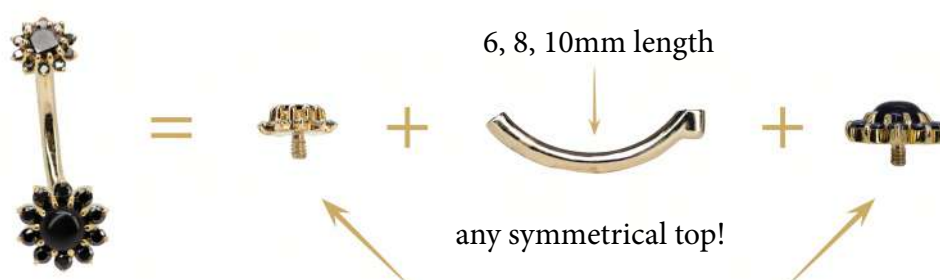


IRIS CURVE

NC-012
Length: 7mm
Thickness: 1.6mm
Gems: round 0.8mmx6, 1mmx2, 1.25mm x2, 1.5mm x2, baguette 2x4mm, tap.baguette 2x1.5x1mm x2

NAVEL CURVES CONSTRUCTOR

1. INTERCHANABLE NAVEL CURVES

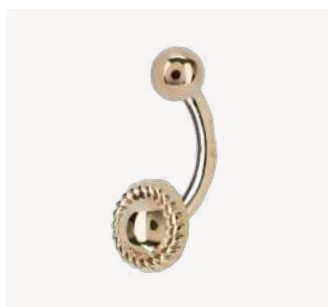


teg: 029, 034, 035, 050, 011, 080, 016, 024, 048, 053, 054, 066, 079, 104, 132, 141
tes: 009, 015, 023, 028, 030-0

You can order separate navel curves with the code **NCI-01**, in various sizes or colors, separate 14g threaded tops, and change them due to your customer requirements!



NCI-013



NCI-014



NCI-015



NCI-016

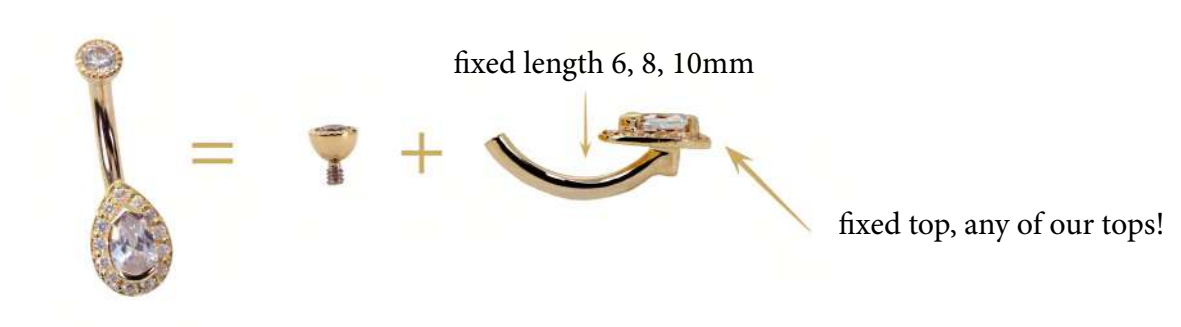


NCI-017



NCI-018

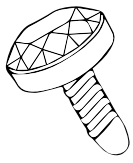
2. FIXED BOTTOM NAVEL CURVES



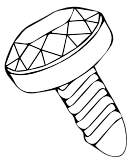
These Navel Curves are final with size and welded bottom decoration. But at least, you can choose any of our tops, even non symmetrical, and we will weld them at a correct angle.

THREADS, PINS & HOOPS

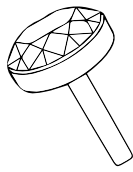
ALL OUR TOPS ARE AVAILABLE IN:



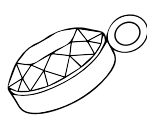
18/16G



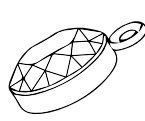
14G



Pin



hf



hs

18/16g thread is for 16g (1.2mm) and 18g (1mm) labrets

(only Industrial Strength and Anatometal)

14g thread is for 14g (1.6mm) labrets and microdermal anchors

Push-pin threadless is for any threadless posts.

Charms: can have frontal (nipple/septum) or side (navel/nostril) orientation.

Choose 16g for 1/1.2mm rings or 12g if you want to put it on our classic Cassiopea.

ENCHANCING CHARMS

Upgrade your existing piercing without even taking jewelry out!

Now you can order ANY our top as a charm!

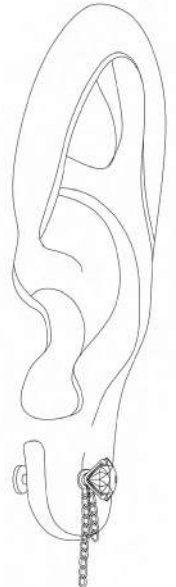
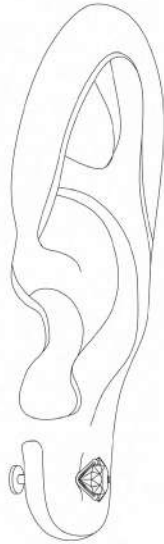
It can look front or side (hf and hs relatively).

Just open your ring, or unscrew your labret, put a charm hoop onto the post and close it back.

Voila! The totally new enchanted look of your jewelry!

We make charms in two hoops sizes: one (16-hf and 16-hs) accurately fits 16g and thinner studs. The other one (12-hf and 12-hs) fits 14g and 12g studs and - which is important, fits our Cassiopea ring!

LABRET WITH CHAIN CHARM AND 3-PRONG-SET GEM



CHARM: UC-103-CHARM ON A LABRET WITH OUR TEG-034 3-PRONG TOP

LEAF CHARM ON A CLICKERING



Works especially good when you want to do something, but you don't want a new piercing, and don't want to take away existing jewelry.

Hint: If you order an up-chain with 16g hoops and a charm with 12-hs hoop, you can simply put a chain into charm hoop and therefore, get an up-chain with running charm of your choice!

Designing of new jewelry had never been as easy as now!

CHARM: TEG-031-CHARM ON OUR BR-004 CLICKERING

CHAINS AND CHARMS



SINGLE UP-CHAIN

UC-101

20, 25, 30, 40mm



DOUBLE UP-CHAIN

UC-102

15/20mm, 20/25mm,
25/30mm, 30/35mm



TRIPLE UP-CHAIN

UC-103

28/30/32mm,
30/35/40mm



ELECTRA UP-CHAIN

UC-006

30/40mm
Gems: 4x2mmx2, 2mmx3,
2x3mmx1



DOUBLE CHARM

UC-102-charm

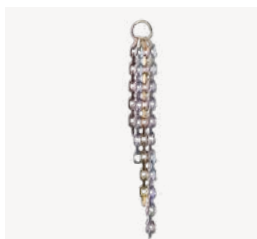
6/10mm



TRIPLE CHARM

UC-103-charm

5/9/13mm



4 CHAIN CHARM

UC-104-charm

5/8/11/14mm



TEARDROP CHARM

TEG-033-chr

-sml: 3x2mm
Chart #3

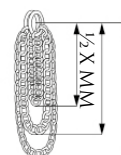
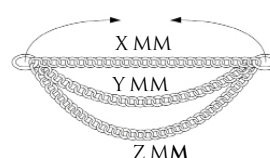


LEAF CHARM

TEG-031-CHR

-sml: 3x1.5mm
-med: 4x2mm
-avg: 5x2.5mm
-big: 6x3mm
Chart #1, 3

HOW TO MEASURE UPCHAIN?



WHERE TO APPLY UPCHAINS

Up-Grade your existing piercing and jewelry!



Trendy nostril symmetry might become a single jewelry project with a chain connecting those two jewelry pieces with its jump rings!














Connect two or more your existing piercing, totally enchanting the way they look!



Just insert your labret/ barbell into two jump rings of Up-Chaing from each side! Being classy had never been so easy!

GEMCHART #1









PRECIOUS GEMS

| | | |  |  |  |  |  |  |
|---|---------------|-------|---|---|---|---|---|---|
|  | Diamond | DIA | 0,8, 1,125, 1,5, 1,75, 2, 2,5, 3, 4, 5, 6 | 1,5x1,5, 2x2, 3x3 | 2x3, 5x3 | 1,5x3, 2x4, 3x6 | 2,5x1,5x1, 4x2x1,5 | - |
|  | Black diamond | BKDIA | 1, 1,25, 1,5, 2, 2,5, 3 | - | - | 2x4 | - | - |
| *  | Ruby | RUB | 1, 1,25, 1,5, 1,75, 2, 2,5, 3, 4, 5, 6 | 2x2, 3x3 | 5x3 | 2x4, 3x6 | - | - |
| *  | Emerald | EMER | 1, 1,25, 1,5, 1,75, 2, 2,5, 3, 4, 5, 6 | 2x2, 3x3 | 5x3 | 2x4, 3x6 | - | - |
| *  | Blue sapphire | BLSPH | 1, 1,25, 1,5, 1,75, 2, 2,5, 3, 4, 5, 6 | 2x2, 3x3 | 5x3 | 2x4, 3x6 | - | - |

* Due to genuine nature of this gemstone, color may vary!

GEMCHART #2









NATURAL FLATBACK STONES

| | | |  |  |  |  |  | BLT |
|--|------------------------|----------|---|---|---|---|---|-----|
|  | Pearl/Mother of pearl* | PRL/PRMT | 2, 2,5, 3, 4, 5, 6 | 6x4 | 2x2, 3x3 | 2x3, 5x3, 6x4 | 1,5x3, 4x2, 6x3, 8x4 | - |
|  | Rainbow moonstone | RMS | 2, 2,5, 3, 4, 5, 6 | 6x4 | 3x3 | 2x3, 5x3, 6x4 | 4x2, 6x3, 8x4 | + |
|  | Rose quartz | ROZ | 2,5, 3, 4, 5, 6 | 6x4 | 3x3 | 2x3, 5x3, 6x4 | 4x2, 6x3, 8x4 | + |

* Mother of Pearl (PRMT) replaces Pearl (PRL) if gem is not round

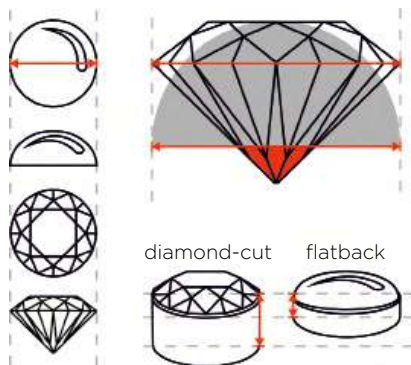
GEMCHART #3

CUBIC ZIRCONIA GEMS

| | | |  |  |  |  |  |  |
|---|----------|------|---|--|---|---|---|---|
|  | White CZ | WCZ | 0,8, 1,125, 1,5, 1,75, 2, 2,5, 3, 4, 5, 6 | 1,5x1,5, 2x2, 3x3 | 3x2, 5x3, 6x4 | 1,5x3, 4x2, 6x3 | 3x3 | 1,5x3, 4x2, 6x3 |
|  | Black CZ | BKCZ | 1, 1,25, 1,5, 1,75, 2, 2,5, 3, 4, 6 | 2x2 | 3x2 | 4x2, 6x3 | - | 1,5x3, 6x3 |

OUR GEMS

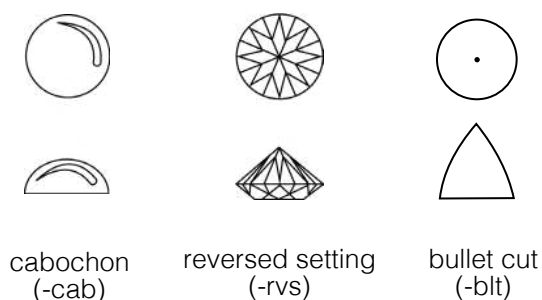
Regular and flatback gem setting. The difference.



Diamond-cut gem is TALLER and can not be set into flatback setting.

- All gem sizes are listed in millimeters.
- All diamonds are at least VVS quality, and are cruelty-free. Mostly we mine them in Russia.
- All precious stones from [GEMCHART #1](#) are natural.
- All natural stones from [GEMCHART #2](#) are literally natural. And have a small surcharge per each gem.
- All synthetic faceted CZ [GEMCHART #3](#) are highest quality Cubic Zirconia on the market, originally from Austria.

FLATBACK SETTING GEM OPTIONS



WARRANTY

We make our jewelry for people like us.

We pay money and we want our purchases to be worth of it.

So our warranty policy is To Be Fair.

All our jewelry items have lifetime warranty. This means if a gem falls off or changes color, we repair or replace the whole piece, if a clicker is too loose, doesn't click and hold tight, we change it.

If a threading or a pin gets broken because of a light attempt to put it into a stud, we change it.

Nevertheless, this is applicable only to manufacturing malfunction.

If you break a pin because of incorrect usage, if you squash a gemstone with force, if you heat it and it gets tarnish - these cases are supposed to be misuse and are not covered under the warranty.

If you get a problem with our jewelry, please contact the reseller who you bought it from.

All jewelry gets inspected by reseller if it has traces of misuse.

If the reseller is sure that the damage was caused by manufacturing malfunction, he or she sends it back to manufacturer by a state post (with tracking number) and creates a replacement case via sending email to

sales@auris.gold

When we get a replacement request we send a new piece of jewelry (if available) with a state post or start manufacturing the same piece.

When the original jewelry comes back to us, we inspect it for misuse and if we find the misuse, we charge reseller for a broken item repairment and shipping costs.

Otherwise, we pay for shipping to reseller; reseller pays for shipping to client if needed.

WHOLESALE INFO

Auris Jewellery has been founded and proudly operates in Russia, St Petersburg area. We stay beside firsts who brought high-end piercing to Russia, first to establish market in whole continent, and we were first to show the world the forgotten quality and art of russian craftsmanship. Now we continue to rise the level of quality in piercing and traditional jewelry industry.

However, for your ease we have American brunch of our company, which may be easier to work with nowadays.

Our company values are Beauty, Trust and Honesty.

We have a core of our ideas - about this world, about how to work there, about how to make it a better place.

Thus, we divide people of this world into two groups.

There is a number of people who promote cheap asian replica jewelry like it is premium, while it is not.

There are people who sell Auris generic jewelry replicas and publically use other «brand» name.

There are people who sell chinese replicas of respectable Titanium brands like it is the best on the market.

Whether they understand that or not, we do not want our business and our jewelry to be around those people.

Work honest or work elsewhere.

Our sales policy is that in 2021 we stop selling our jewelry to shops who sell brands who copies our jewelry, and we downscale priority of orders of people who promote chinese companies brands with no ideology and no future.

We live in Auris World. Hopefully, you too.

Nevertheless, if it happened that you are on the other side by mistake, we do have Novizio brand. It is limited line of jewelry, but every piercing studio can order it to replace replica jewelry in stock.

WHOLESALE F.A.Q.

- What's your manufacturing time? - For orders below AUR 10.000 it is between 3 and 6 weeks normally, except periods 2-3 months upfront big conferences and tradeshow. For Novizio-only orders manufacturing is 2-3 weeks only!

- How long is it to ship to other countries? - When shipping from Russia, we use Russian courier service. It normally takes 2-4 weeks to pass the border. If you buy jewelry from our American stock, shipping with UPS or FedEx is 1-5 business days for domestic shipping or 1-2 weeks for international.

- How much does shipping cost? - we charge AUR 50 to ship from Russia.

- Do you have warranty? - Yes, you are all covered. Our gemstones don't turn its color (unless you haven't been clearly notified it does), our gold is safe and don't cause allergies. Our pins are steel and secure if you use our bending tool properly. Our threads are gold and don't fall off. Warranty against manufacturing defects is lifetime. We make proudful jewelry!

- Is there a minimal order? - Yes. **It is AUR 500**, this makes it worth of paying for shipping.

- What is AUR? - AUR is Auris Unified Rouble. It is our internal currency used to control our national currency strength against world major currencies. We have a conversion rate with EUR, USD, RUB and other currencies. This conversion may change over time due to political and economic situation changes.

This is minimal reasonable amount to have good enough selection representing our brand. For returning clients minimal amount is AUR 500 - just to make it worth of shipping.

- Can I buy something right now? I don't want to wait! - Normally we do have wholesale jewelry stock for sell at our website: wholesale.aurisjewellery.com. Contact our sales manager to get help with opening your wholesale account if you don't have it yet!

- Do you sell for retail clients? - Yes, we do. We maintain our presence online and offline, always working on building our brand reputation. Because luxury things were never born in wholesale. However we respect our resellers business and take as much precautions as we can not to intervene with our resellers.

- Can I open an account with you in a town, when there is already Auris reseller? - It depends on the town size and the opinion of that reseller. We advice with our loyal clients before opening a door to their competitors.

AURIS BRANDED DISPLAY

We work in jewellery sells for long time, and know how important are demonstration tools. Specially for our jewelry and for body piercers we designed our displays. Just take a sight how much better gold looks on it!

Advantages of our displays are:

1. The angle is regulated from 0 to 90 degrees. Yes, literally you can put it on any kind of display case shelf!
2. For making it 0 to 90, you have to reverse the display. To make it working, we invented detachable logo plate, so you can rever it and logo will still look correctly.
3. Detachable logo has a lot of advantages - you can move it from display to display, depends on your goal. You don't need every display with a logo plate, and you can buy as many you need, they are sold separately.
4. For tops displays, logo plate mounts right in jewelry slots! Take it away and put two more pieces on your display; sell them and return logo back!
5. For rings displays, logo plate mounts into two 24g holes. You can take it away and put two threadless tops in!
6. Our tops displays have one hole size for each thread - 14g (1.2mm hole), 18/16g (1mm hole), threadless (0.5mm hole). You can put 16g top onto 14g display, it will stay there but it won't hold securely.
7. And overall, you can make beautiful compositions of.

Displays which will help you to show our jewelry at its best!

You can put a detachable logo plate or logo badge in two holes in the middle of the display, giving your selection a brand name.

The holes are 24G, so you can put two threadless tops instead of logo plate.

Ear display right

Ear display left



H12



H17



H15

H12L



H22



SR3V



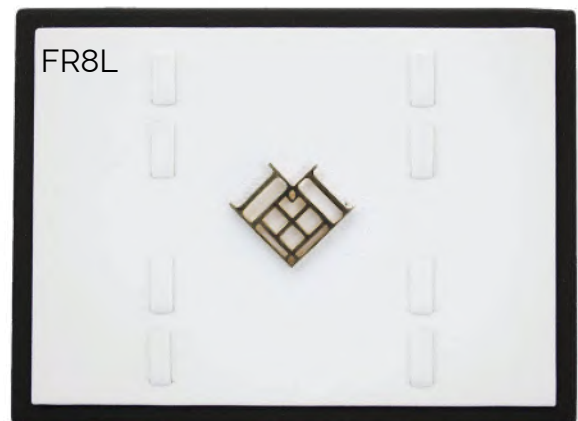
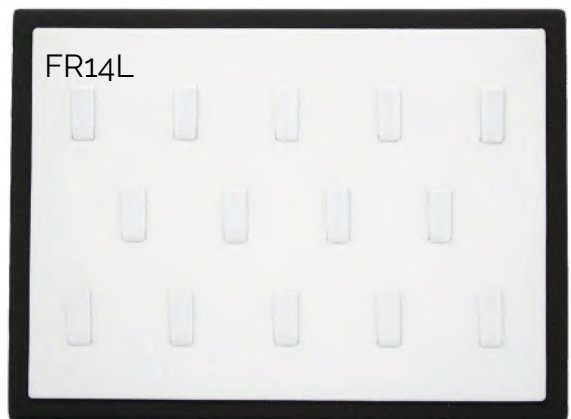
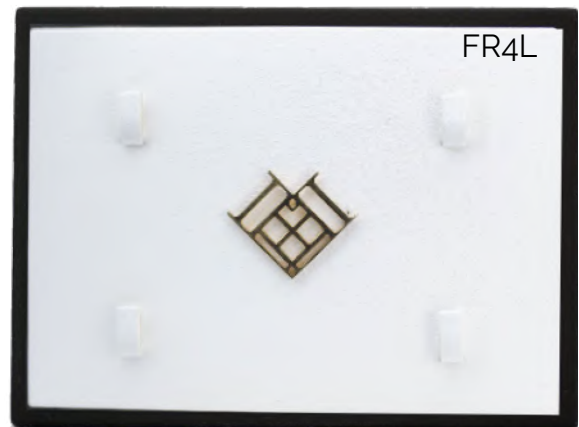
H8



H6

SR1

H1



Stand for 5 or 3 displays, and you can combine different options.

EHD5



EHD3