

BV49-3434E-F4 DN40 - DN300

RESILIENT SEATED GATE VALVE



TECHNICAL DESCRIPTION

- Flanged gate valve with rubber coated wedge
- Resilient seated gate valve suitable for water
- Full straight bore ensures minimum pressure loss
- Design according to EN 1074-2 (DIN 3352 part 4)
- Testing acc. to ISO 5208
- Max. working pressure : PN16 : 16 bar / PN10 : 10 bar
- Body hydro-test pressure : PN16 : 24 bar / PN10 : 15 bar
- Seat hydro-test pressure : PN16 : 17,6 bar / PN10 : 11 bar
- Max. allowable temperature : 120°C
- Flange drillings acc. EN 1092-2 (ISO 7005-2)
- Face to face dimensions acc. EN-558-1 series 14 (DIN 3202-F4)
- In-and outside epoxy powder coating 200 to 250µm RAL 5015

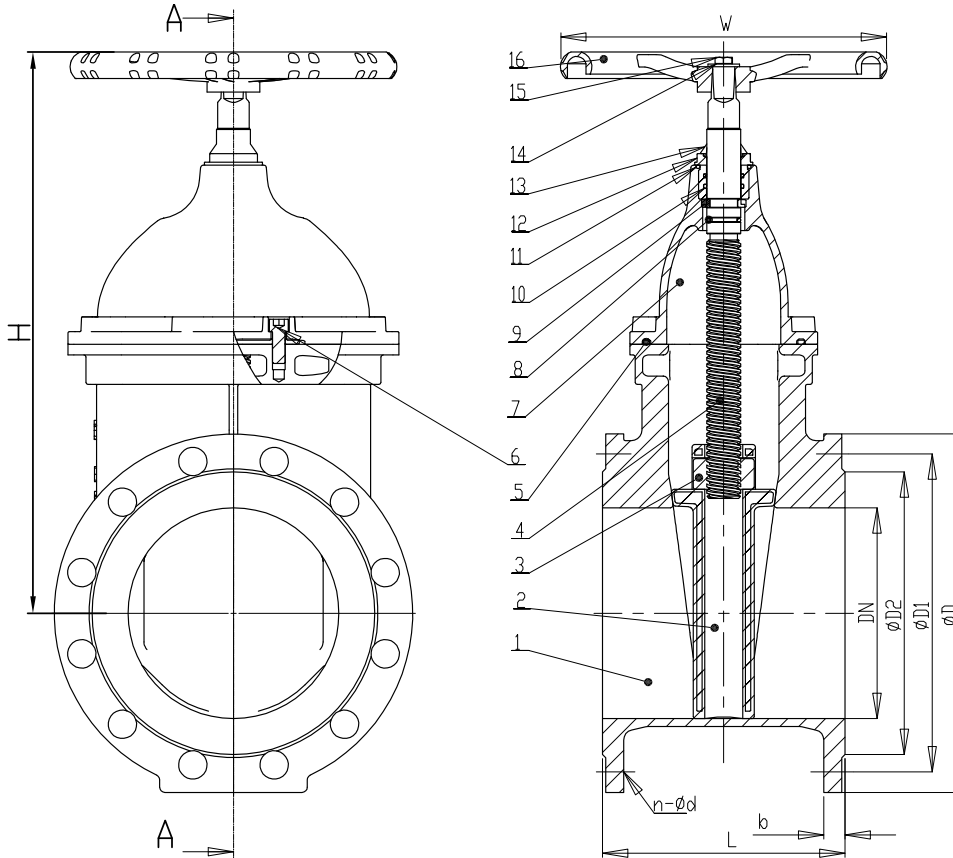
	Suitable for :	Not recommendable for :	Temperature range :
EPDM : Ethylen-Propylene Diene Monomer (or Terpolymer)	water/steam, sea water, brine, esters, ketone, alkalis, caustic soda	hydrocarbons, oils, fats	-15°C to 120°C
NBR* : Acrylonitrile-Butadiene copolymer	hydrocarbons, oils, greases, gas oil	solvents, benzene, xylol	-10°C to 80°C

*NBR available upon request, or standard with our BV49AQ

OPTIONS

- 3.1 certificate available upon request
- Wedge with NBR coating
- Execution with position indicator
- With ISO 5211 mounting platform for automation
- Chainwheel
- Electric execution
- Execution for buried applications
- Surface boxes, T-Lever





ITEM	PART NAME	MATERIAL
1	BODY	DUCTILE IRON GGG50 WITH EPOXY COATING
2	WEDGE	DUCTILE IRON WITH EPDM COATING
3	WEDGE NUT	BRASS
4	STEM	STAINLESS STEEL AISI 420
5	BONNET GASKET	EPDM
6	BOLT	STAINLESS STEEL 304
7	BONNET	DUCTILE IRON GGG50 WITH EPOXY COATING
8	O-RING	EPDM
9	TRUST RING	BRASS
10	O-RING	EPDM
11	O-RING	EPDM
12	BUSHING	BRASS
13	DUSTPROOF RING	EPDM
14	WASHER	STAINLESS STEEL AISI 304
15	BOLT	STAINLESS STEEL AISI 304
16	HANDWHEEL	DUCTILE IRON WITH EPOXY COATING

DN	Weight (kg)
40	9
50	11
65	14
80	17
100	21
125	29
150	38
200	58
250	90
300	120

DN	PN	L (mm)	ØD (mm)	ØD1 (mm)	ØD2 (mm)	b (mm)	n - Ød	H (mm)	W (mm)
40	10/16	140	150	110	84	19	4 - 19	240	160
50		150	165	125	99	19	4 - 19	250	180
65		170	185	145	118	19	4 - 19	265	180
80		180	200	160	132	19	8 - 19	300	200
100		190	220	180	156	19	8 - 19	350	200
125		200	250	210	184	19	8 - 19	410	220
150	10	210	285	240	211	19	8 - 23	450	250
200		230	340	295	266	20	8 - 23	550	280
250		250	395	350	319	22	12 - 23	650	320
300	16	270	445	400	370	24,5	12 - 23	710	350
200		230	340	295	266	20	12-23	550	280
250		250	405	355	319	22	12-28	650	320
300		270	460	410	370	24,5	12-28	710	350