

LIVE CENTER SERIES

2020▶2021
WIDIN
PRODUCTS

LIVE CENTER SERIES

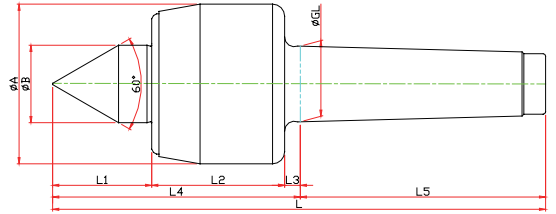
06



Type	Appearance	Page	Type	Appearance	Page			
NC TYPE		422	SMP TYPE		435			
NCB TYPE		422	SMPB TYPE		435			
NCC TYPE		422	SMPC TYPE		435			
NCBC TYPE		423	SMPBC TYPE		436			
NCN TYPE		423	SMPN TYPE		436			
NCBN TYPE		423	SMPBN TYPE		436			
NCCN TYPE		424	SMPCN TYPE		437			
NCBCN TYPE		424	SMPBCN TYPE		437			
NCP TYPE			425		D50 TYPE		438	
NCPB TYPE			425		D50B TYPE		438	
NCPC TYPE	425		D50C TYPE	438				
NCPBC TYPE	426		D50BC TYPE	439				
NCPN TYPE	426		HD TYPE		440			
NCPBN TYPE	426		HDC TYPE		440			
NPCN TYPE	427		HDS TYPE		440			
NCPBCN TYPE	427		HDSC TYPE		441			
NK TYPE			428		HDSTH TYPE			441
NKB TYPE			428		PT-60 TYPE			442
NKC TYPE		428	PT-80 TYPE		442			
NKBC TYPE		429	LM-A TYPE			443		
NKN TYPE		429	LM-C TYPE			443		
NKBN TYPE		429	LM-AN TYPE			444		
NKCN TYPE		430	LM-CN TYPE	444				
NKBCN TYPE		430	LM-H TYPE	445				
NKD TYPE		431	LM-HC TYPE	445				
GR TYPE			431	LM-HN TYPE		446		
SM TYPE	432		LM-HCN TYPE	446				
SMB TYPE	432		LM-FN TYPE			447		
SMC TYPE	432		LM-#80 TYPE				447	
SMBC TYPE	433							
SMN TYPE	433							
SMBN TYPE	433							
SMCN TYPE	434							
SMBCN TYPE	434							

NC TYPE

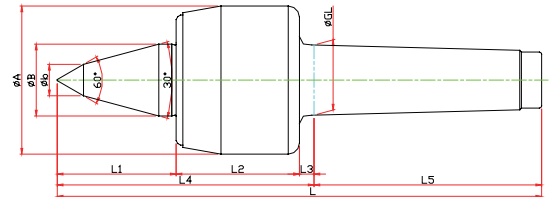
▶ NC-TYPE



Model	Order Number	Morse Taper	Dimension										Weight MAX.	R.P.M MAX.	Run Out
			GL	A	B	L1	L2	L3	L4	L5	L				
LC-3NC	010003	NO.3	23.825	50	22	27	45	5	77	81	158	630	4800	0.003	
LC-4NC	010004	NO.4	31.267	66	32	41	55	6.5	102.5	101.5	204	1100	3800	0.003	
LC-5NC	010005	NO.5	44.399	82	40	50	65	6.5	121.5	129.5	251	1600	3400	0.005	
LC-6NC	010006	NO.6	63.384	105	45	54	80	8	142	182	324	2100	3000	0.005	

▶ NCB-TYPE

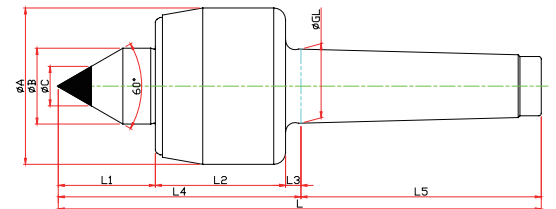
※ SHAFT EXTENTION(Minimize the bite-interference)



Model	Order Number	Morse Taper	Dimension										Weight MAX.	R.P.M MAX.	Run Out
			GL	A	B	b	L1	L2	L3	L4	L5	L			
LC-3NCB	011003	NO.3	23.825	50	22	10	47	45	5	97	81	178	630	4800	0.003
LC-4NCB	011004	NO.4	31.267	66	32	14	53	55	6.5	114.5	101.5	216	1100	3800	0.003
LC-5NCB	011005	NO.5	44.399	82	40	16	65	65	6.5	129.5	129.5	266	1600	3400	0.005
LC-6NCB	011006	NO.6	63.384	105	45	18	78	80	8	182	182	348	2100	3000	0.005

▶ NCC-TYPE

※ Carbide Type

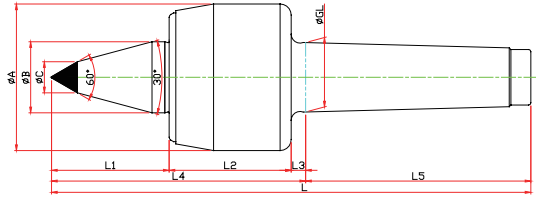


Model	Order Number	Morse Taper	Dimension										Weight MAX.	R.P.M MAX.	Run Out
			GL	A	B	L1	L2	L3	L4	L5	C	L			
LC-3NCC	010103	NO.3	23.825	50	22	27	45	5	77	81	10	158	630	4800	0.003
LC-4NCC	010104	NO.4	31.267	66	32	41	55	6.5	102.5	101.5	14	204	1100	3800	0.003
LC-5NCC	010105	NO.5	44.399	82	40	50	65	6.5	121.5	129.5	18	251	1600	3400	0.005
LC-6NCC	010106	NO.6	63.384	105	45	54	80	8	142	182	25	324	2100	3000	0.005

NC TYPE

▶ NCBC-TYPE

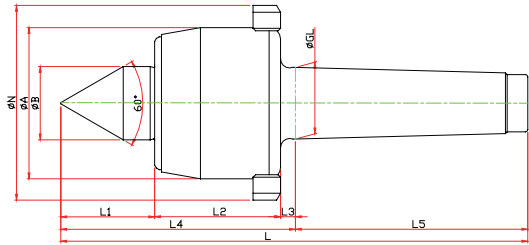
- ※ SHAFT EXTENSION(Minimize the bite-interference)
- ※ Carbide Type



Model	Order Number	Morse Taper	Dimension										Weight MAX.	R.P.M MAX.	Run Out
			GL	A	B	L1	L2	L3	L4	L5	C	L			
LC-3NCBC	011102	NO.3	23.825	50	22	47	45	5	97	81	10	178	630	4800	0.003
LC-4NCBC	011103	NO.4	31.267	66	32	53	55	6.5	114.5	101.5	14	216	1100	3800	0.003
LC-5NCBC	011104	NO.5	44.399	82	40	65	65	6.5	136.5	129.5	16	266	1600	3400	0.005
LC-6NCBC	011105	NO.6	63.384	105	45	78	80	8	166	182	18	348	2100	3000	0.005

▶ NCN-TYPE

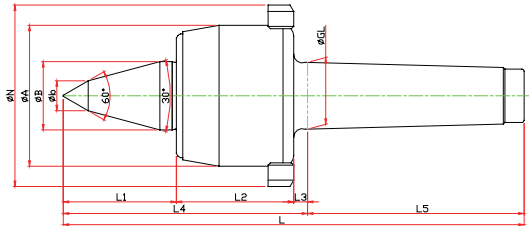
- ※ Nut Type



Model	Order Number	Morse Taper	Dimension										Weight MAX.	R.P.M MAX.	Run Out
			GL	A	B	L1	L2	L3	L4	L5	N	L			
LC-3NCN	010013	NO.3	23.825	50	22	27	45	5	77	81	70	158	630	4800	0.003
LC-4NCN	010014	NO.4	31.267	66	32	41	55	6.5	102.5	101.5	85	204	1100	3800	0.003
LC-5NCN	010015	NO.5	44.399	82	40	50	65	6.5	121.5	129.5	105	251	1600	3400	0.005
LC-6NCN	010016	NO.6	63.384	105	45	54	80	8	142	182	130	324	2100	3000	0.005

▶ NCBN-TYPE

- ※ SHAFT EXTENSION(Minimize the bite-interference)
- ※ Nut Type

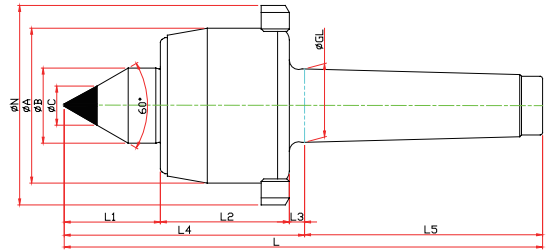


Model	Order Number	Morse Taper	Dimension											Weight MAX.	R.P.M MAX.	Run Out
			GL	A	B	b	L1	L2	L3	L4	L5	N	L			
LC-3NCBN	011013	NO.3	23.825	50	22	10	47	45	5	97	81	70	178	630	4800	0.003
LC-4NCBN	011014	NO.4	31.267	66	32	14	53	55	6.5	114.5	101.5	85	216	1100	3800	0.003
LC-5NCBN	011015	NO.5	44.399	82	40	16	65	65	6.5	136.5	129.5	105	266	1600	3400	0.005
LC-6NCBN	011016	NO.6	63.384	105	45	18	78	80	8	166	182	130	348	2100	3000	0.005

NC TYPE

▶ NCCN-TYPE

※ Nut, Carbide Type Type

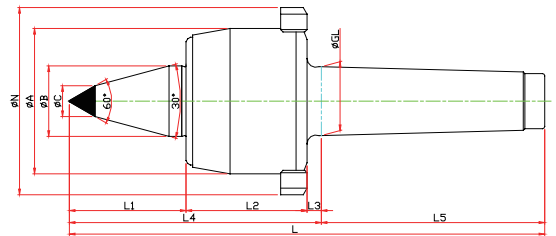


Model	Order Number	Morse Taper	Dimension											Weight MAX.	R.P.M MAX.	Run Out
			GL	A	B	L1	L2	L3	L4	L5	C	N	L			
LC-3NCCN		NO.3	23.825	50	22	27	45	5	77	81	10	70	158	630	4800	0.003
LC-4NCCN		NO.4	31.267	66	32	41	55	6.5	102.5	101.5	14	85	204	1100	3800	0.003
LC-5NCCN		NO.5	44.399	82	40	50	65	6.5	121.5	129.5	18	105	251	1600	3400	0.005
LC-6NCCN		NO.6	63.384	105	45	54	80	8	142	182	25	130	324	2100	3000	0.005

▶ NCBCN-TYPE

※ SHAFT EXTENTION(Minimize the bite-interference)

※ Nut, Carbide Type Type



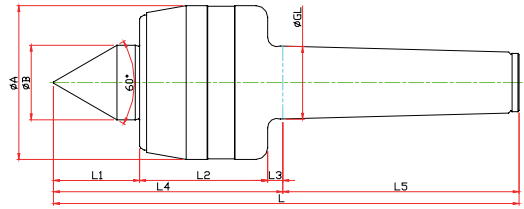
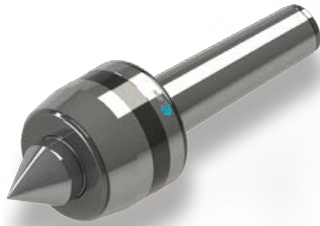
Model	Order Number	Morse Taper	Dimension											Weight MAX.	R.P.M MAX.	Run Out
			GL	A	B	L1	L2	L3	L4	L5	C	N	L			
LC-3NCBCN		NO.3	23.825	50	22	47	45	5	97	81	10	70	178	630	4800	0.003
LC-4NCBCN		NO.4	31.267	66	32	53	55	6.5	114.5	101.5	14	85	216	1100	3800	0.003
LC-5NCBCN		NO.5	44.399	82	40	65	65	6.5	136.5	129.5	16	105	266	1600	3400	0.005
LC-6NCBCN		NO.6	63.384	105	45	78	80	8	166	182	18	130	348	2100	3000	0.005

▶ NC-SPECIAL



NCP TYPE

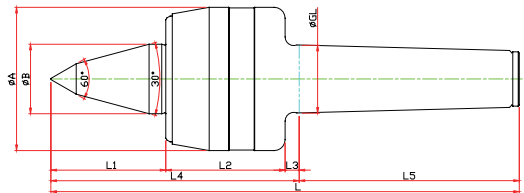
▶ NCP-TYPE



Model	Order Number	Morse Taper	Dimension										Weight MAX.	R.P.M MAX.	Run Out
			GL	A	B	L1	L2	L3	L4	L5	L				
LC-3NCP	030003	NO.3	23.825	50	22	27	45	5	77	81	158	800	4800	0.003	
LC-4NCP	030004	NO.4	31.267	66	32	37	55	6.5	98.5	101.5	200	1300	3800	0.003	
LC-5NCP	030005	NO.5	44.399	82	40	45	65	6.5	116.5	129.5	246	1900	3400	0.005	
LC-6NCP	030006	NO.6	63.384	100	45	65	80	8	153	182	335	2500	3000	0.005	

▶ NCPB-TYPE

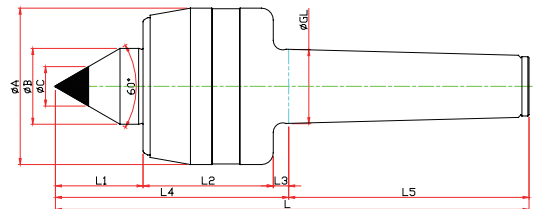
※ SHAFT EXTENSION(Minimize the bite-interference)



Model	Order Number	Morse Taper	Dimension										Weight MAX.	R.P.M MAX.	Run Out
			GL	A	B	b	L1	L2	L3	L4	L5	L			
LC-3NCPB	031003	NO.3	23.825	50	22	10	27	45	5	97	81	178	800	4800	0.003
LC-4NCPB	031004	NO.4	31.267	66	32	14	37	55	6.5	114.5	101.5	216	1300	3800	0.003
LC-5NCPB	031005	NO.5	44.399	82	40	16	45	65	6.5	136.5	129.5	266	1900	3400	0.005
LC-6NCPB	031006	NO.6	63.384	100	45	18	65	80	8	166	182	348	2500	3000	0.005

▶ NCPC-TYPE

※ Carbide Type

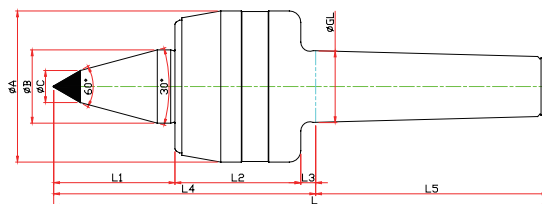


Model	Order Number	Morse Taper	Dimension										Weight MAX.	R.P.M MAX.	Run Out
			GL	A	B	L1	L2	L3	L4	L5	C	L			
LC-3NCPC	030103	NO.3	23.825	50	22	27	45	5	77	81	10	158	800	4800	0.003
LC-4NCPC	030104	NO.4	31.267	66	32	37	55	6.5	98.5	101.5	14	200	1300	3800	0.003
LC-5NCPC	030105	NO.5	44.399	82	40	45	65	6.5	116.5	129.5	18	246	1900	3400	0.005
LC-6NCPC	030106	NO.6	63.384	100	45	65	80	8	153	182	25	335	2500	3000	0.005

NCP TYPE

▶ NCPBC-TYPE

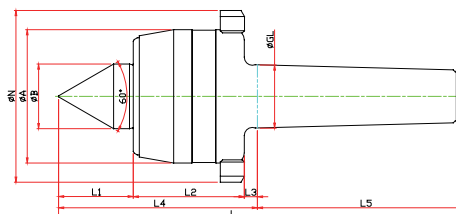
- ※ SHAFT EXTENTION(Minimize the bite-interference)
- ※ Carbide Type



Model	Order Number	Morse Taper	Dimension											Weight MAX.	R.P.M MAX.	Run Out
			GL	A	B	L1	L2	L3	L4	L5	C	L				
LC-3NCPBC	031103	NO.3	23.825	50	22	27	45	5	97	81	10	178	800	4800	0.003	
LC-4NCPBC	031104	NO.4	31.267	66	32	37	55	6.5	114.5	101.5	14	216	1300	3800	0.003	
LC-5NCPBC	031105	NO.5	44.399	82	40	45	65	6.5	136.5	129.5	16	266	1900	3400	0.005	
LC-6NCPBC	031106	NO.6	63.384	100	45	65	80	8	166	182	18	348	2500	3000	0.005	

▶ NCPN-TYPE

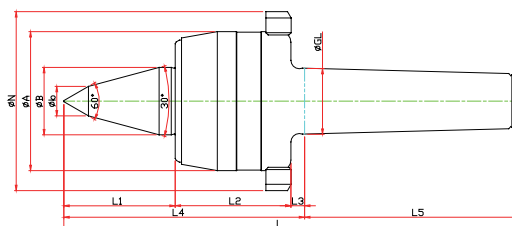
- ※ Nut Type



Model	Order Number	Morse Taper	Dimension										Weight MAX.	R.P.M MAX.	Run Out
			GL	A	B	L1	L2	L3	L4	L5	N	L			
LC-3NCPN	030013	NO.3	23.825	50	22	27	45	5	77	81	70	158	800	4800	0.003
LC-4NCPN	030014	NO.4	31.267	66	32	37	55	6.5	98.5	101.5	85	200	1300	3800	0.003
LC-5NCPN	030015	NO.5	44.399	82	40	45	65	6.5	116.5	129.5	105	246	1900	3400	0.005
LC-6NCPN	030016	NO.6	63.384	100	45	65	80	8	153	182	130	335	2500	3000	0.005

▶ NCPBN-TYPE

- ※ SHAFT EXTENTION(Minimize the bite-interference)
- ※ Nut Type

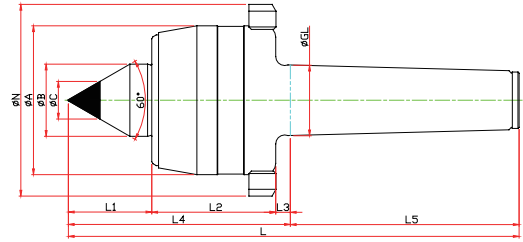


Model	Order Number	Morse Taper	Dimension											Weight MAX.	R.P.M MAX.	Run Out
			GL	A	B	b	L1	L2	L3	L4	L5	N	L			
LC-3NCPBN	031013	NO.3	23.825	50	22	10	47	45	5	97	81	70	178	800	4800	0.003
LC-4NCPBN	031014	NO.4	31.267	66	32	14	53	55	6.5	114.5	101.5	85	216	1300	3800	0.003
LC-5NCPBN	031015	NO.5	44.399	82	40	16	65	65	6.5	136.5	129.5	105	266	1900	3400	0.005
LC-6NCPBN	031016	NO.6	63.384	100	45	18	78	80	8	166	182	130	348	2500	3000	0.005

NCP TYPE

▶ NCP-CN-TYPE

※ Nut, Carbide Type Type

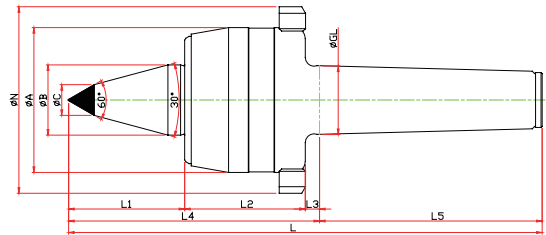


Model	Order Number	Morse Taper	Dimension											Weight MAX.	R.P.M MAX.	Run Out
			GL	A	B	L1	L2	L3	L4	L5	C	N	L			
LC-3NCPCN	030113	NO.3	23.825	50	22	27	45	5	77	81	10	70	158	800	4800	0.003
LC-4NCPCN	030114	NO.4	31.267	66	32	37	55	6.5	98.5	101.5	14	85	200	1300	3800	0.003
LC-5NCPCN	030115	NO.5	44.399	82	40	45	65	6.5	116.5	129.5	18	105	246	1900	3400	0.005
LC-6NCPCN	030116	NO.6	63.384	100	45	65	80	8	153	182	25	130	335	2500	3000	0.005

▶ NCPBCN-TYPE

※ SHAFT EXTENSION(Minimize the bite-interference)

※ Nut, Carbide Type Type



Model	Order Number	Morse Taper	Dimension											Weight MAX.	R.P.M MAX.	Run Out
			GL	A	B	L1	L2	L3	L4	L5	C	N	L			
LC-3NCPBCN	031113	NO.3	23.825	50	22	47	45	5	97	81	10	70	178	800	4800	0.003
LC-4NCPBCN	031114	NO.4	31.267	66	32	53	55	6.5	114.5	101.5	14	85	216	1300	3800	0.003
LC-5NCPBCN	031115	NO.5	44.399	82	40	65	65	6.5	136.5	129.5	16	105	266	1900	3400	0.005
LC-6NCPBCN	031116	NO.6	63.384	100	45	78	80	8	166	182	25	130	348	2500	3000	0.005

▶ NCP SPECIAL

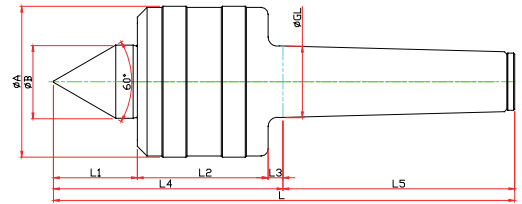
※ Customized-special production for user's condition



NK TYPE

▶ NK-TYPE

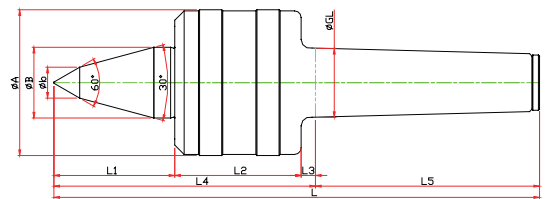
※ Center for heavy duty and Semi High Speed



Model	Order Number	Morse Taper	Dimension										Weight MAX.	R.P.M MAX.	Run Out
			GL	A	B	L1	L2	L3	L4	L5	L				
LC-3NK	020003	NO.3	23.825	52	22	29	42	5	76	80	156	1900	5000	0.003	
LC-4NK	020004	NO.4	31.267	66	32	37	57	6.5	100.5	101.5	202	2700	3800	0.003	
LC-5NK	020005	NO.5	44.399	80	40	45.5	57	6.5	109	129.5	238.5	3200	3400	0.005	
LC-6NK	020006	NO.6	63.348	132	65	65	100	8	173	182	355	10000	1800	0.005	
LC-7NK	020007	NO.7	83.058	168	72	84	128	10	222	250	427	17200	1200	0.005	

▶ NKB-TYPE

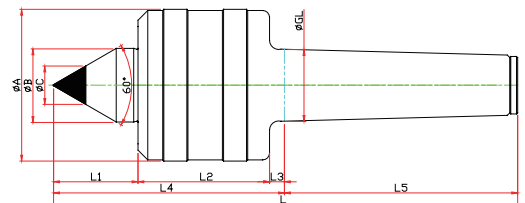
※ SHAFT EXTENTION(Minimize the bite-interference)



Model	Order Number	Morse Taper	Dimension										Weight MAX.	R.P.M MAX.	Run Out
			GL	A	B	b	L1	L2	L3	L4	L5	L			
LC-3NKB	021003	NO.3	23.825	52	22	10	48	42	5	95	80	175	1900	5000	0.003
LC-4NKB	021004	NO.4	31.267	66	32	14	53	57	6.5	116.5	101.5	218	2700	3800	0.003
LC-5NKB	021005	NO.5	44.399	80	40	18	65.5	57	6.5	129	129.5	258.5	3200	3400	0.005
LC-6NKB	021006	NO.6	63.348	132	65	25	78	100	8	186	182	368	10000	1800	0.005

▶ NKC-TYPE

※ Carbide Type

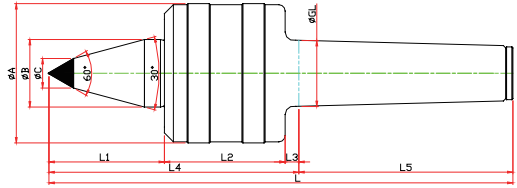


Model	Order Number	Morse Taper	Dimension										R.P.M MAX.	Run Out	
			GL	A	B	L1	L2	L3	L4	L5	C	L			
LC-3NKC	020103	NO.3	23.825	52	22	29	42	5	76	80	10	156	1900	5000	0.003
LC-4NKC	020104	NO.4	31.267	66	32	37	57	6.5	100.5	101.5	14	202	2700	3800	0.003
LC-5NKC	020105	NO.5	44.399	80	40	45.5	57	6.5	109	129.5	18	238.5	3200	3400	0.005
LC-6NKC	020106	NO.6	63.348	132	65	65	100	8	173	182	25	355	10000	1800	0.005

NK TYPE

▶ NKBC-TYPE

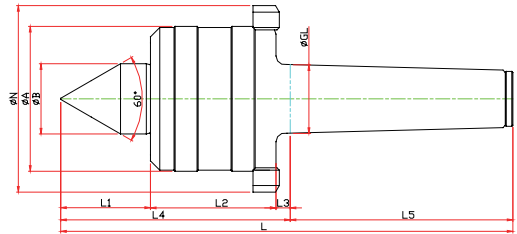
- ※ SHAFT EXTENTION(Minimize the bite-interference)
- ※ Carbide Type



Model	Order Number	Morse Taper	Dimension											Weight MAX.	R.P.M MAX.	Run Out
			GL	A	B	L1	L2	L3	L4	L5	C	L				
LC-3NKBC	021103	NO.3	23.825	52	22	48	42	5	95	80	10	175	1900	5000	0.003	
LC-4NKBC	021104	NO.4	31.267	66	32	53	57	6.5	116.5	101.5	14	218	2700	3800	0.003	
LC-5NKBC	021105	NO.5	44.399	80	40	65.5	57	6.5	129	129.5	18	258.5	3200	3400	0.005	
LC-6NKBC	021106	NO.6	63.348	132	65	78	100	8	186	182	25	368	10000	1800	0.005	

▶ NKN-TYPE

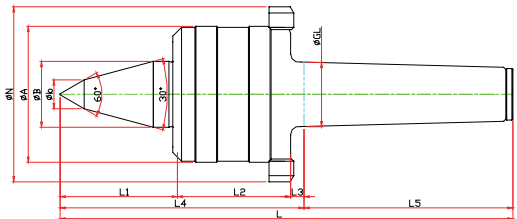
- ※ Nut Type



Model	Order Number	Morse Taper	Dimension										Weight MAX.	R.P.M MAX.	Run Out
			GL	A	B	L1	L2	L3	L4	L5	N	L			
LC-3NKN	020013	NO.3	23.825	52	22	29	42	5	76	80	70	156	1900	5000	0.003
LC-4NKN	020014	NO.4	31.267	66	32	37	57	6.5	100.5	101.5	85	202	2700	3800	0.003
LC-5NKN	020015	NO.5	44.399	80	40	45.5	57	6.5	109	129.5	98	238.5	3200	3400	0.005
LC-6NKN	020016	NO.6	63.348	132	65	65	100	8	173	182	165	355	10000	1800	0.005
LC-7NKN	020017	NO.7	83.058	168	72	84	128	10	222	250	210	427	17200	1200	0.005

▶ NKBN-TYPE

- ※ SHAFT EXTENTION(Minimize the bite-interference)
- ※ Nut Type

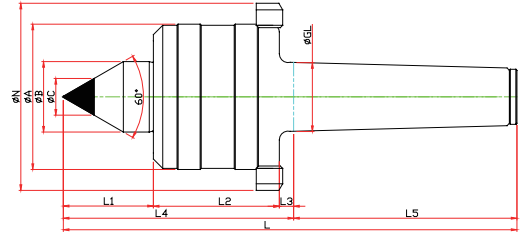


Model	Order Number	Morse Taper	Dimension											Weight MAX.	R.P.M MAX.	Run Out
			GL	A	B	b	L1	L2	L3	L4	L5	N	L			
LC-3NKBN	021013	NO.3	23.825	52	22	10	48	42	5	95	80	70	175	1900	5000	0.003
LC-4NKBN	021014	NO.4	31.267	66	32	14	53	57	6.5	116.5	101.5	85	218	2700	3800	0.003
LC-5NKBN	021015	NO.5	44.399	80	40	18	65.5	57	6.5	129	129.5	98	258.5	3200	3400	0.005
LC-6NKBN	021016	NO.6	63.348	132	65	25	78	100	8	186	182	165	368	10000	1800	0.005

NK TYPE

▶ NKCN-TYPE

※ Nut, Carbide Type Type

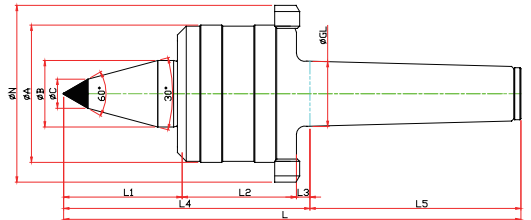


Model	Order Number	Morse Taper	Dimension											Weight MAX.	R.P.M MAX.	Run Out
			GL	A	B	L1	L2	L3	L4	L5	C	N	L			
LC-3NKCN	020113	NO.3	23.825	52	22	29	42	5	76	80	10	70	156	1900	5000	0.003
LC-4NKCN	020114	NO.4	31.267	66	32	37	57	6.5	100.5	101.5	14	85	202	2700	3800	0.003
LC-5NKCN	020115	NO.5	44.399	80	40	45.5	57	6.5	109	129.5	18	98	238.5	3200	3400	0.005
LC-6NKCN	020116	NO.6	63.348	132	65	65	100	8	173	182	25	165	355	10000	1800	0.005

▶ NKBCN-TYPE

※ SHAFT EXTENTION(Minimize the bite-interference)

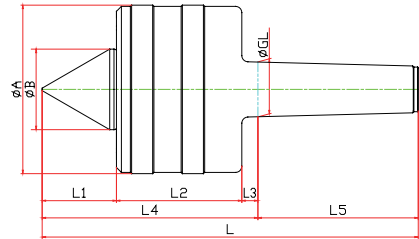
※ Nut, Carbide Type Type



Model	Order Number	Morse Taper	Dimension											Weight MAX.	R.P.M MAX.	Run Out
			GL	A	B	L1	L2	L3	L4	L5	C	N	L			
LC-3NKBCN	021113	NO.3	23.825	52	22	48	42	5	95	80	10	70	175	1900	5000	0.003
LC-4NKBCN	021114	NO.4	31.267	66	32	53	57	6.5	116.5	101.5	14	85	218	2700	3800	0.003
LC-5NKBCN	021115	NO.5	44.399	80	40	65.5	57	6.5	129	129.5	18	98	258.5	3200	3400	0.005
LC-6NKBCN	021116	NO.6	63.348	132	65	78	100	8	186	182	25	165	368	10000	1800	0.005

NK TYPE

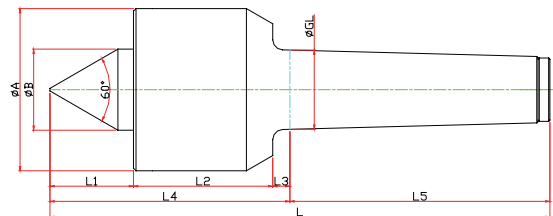
► NKD-TYPE



Model	Order Number	Morse Taper	Dimension									Weight MAX.	R.P.M MAX.	Run Out
			GL	A	B	L1	L2	L3	L4	L5	L			
LC-5NKD	090005	NO.5	44.399	136	65	60	101	13	174	129.5	303.5	13000	3400	0.005
LC-6NKD	090006	NO.6	63.348	148	70	80	110.5	15	205.5	181	387.5	16000	1800	0.005
LC-7NKD	090007	NO.7	83.058	200	95	90	141	20	251	250	501	22000	1200	0.005

GR · SM TYPE

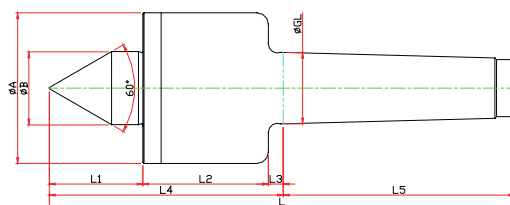
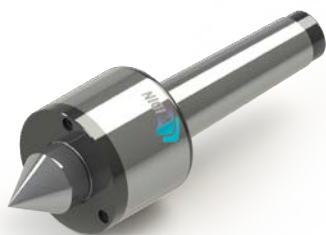
► GR-TYPE



Model	Order Number	Morse Taper	Dimension									Weight MAX.	R.P.M MAX.	Run Out
			GL	A	B	L1	L2	L3	L4	L5	L			
LC-4GR	080004	NO.4	31.267	71	40	45	59.5	6.5	111	101.5	212.5	1300	7000	0.002
LC-5GR	080005	NO.5	44.399	88	50	45	66	6.5	117.5	129.5	247	3500	4500	0.002
LC-6GR	080006	NO.6	63.348	114	52	55	92	8	155	182	337	5000	3400	0.002
LC-7GR	080007	NO.7	83.058	200	98	78	132	10	200	250	470	20000	1900	0.002

GR · SM TYPE

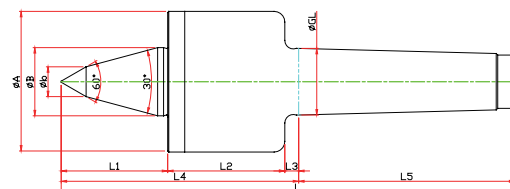
▶ SM-TYPE



Model	Order Number	Morse Taper	Dimension										Weight MAX.	R.P.M MAX.	Run Out
			GL	A	B	L1	L2	L3	L4	L5	L				
LC-3SM	040003	NO.3	23.825	52	22	30	51	5	86	81	167	330	12000	0.003	
LC-4SM	040004	NO.4	31.267	66	32	41	55	6.5	102.5	101.5	204	1100	10000	0.003	
LC-5SM	040005	NO.5	44.399	82	40	51	75	6.5	132.5	129.5	262	2200	8000	0.005	

▶ SMB-TYPE

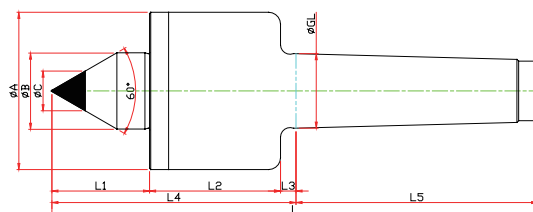
※ SHAFT EXTENTION(Minimize the bite-interference)



Model	Order Number	Morse Taper	Dimension										Weight MAX.	R.P.M MAX.	Run Out
			GL	A	B	b	L1	L2	L3	L4	L5	L			
LC-3SMB	041003	NO.3	23.825	52	22	10	40	51	5	96	81	177	330	12000	0.003
LC-4SMB	041004	NO.4	31.267	66	32	14	50	55	6.5	111.5	101.5	213	1100	10000	0.003
LC-5SMB	041005	NO.5	44.399	82	40	16	65	75	6.5	146.5	129.5	276	2200	8000	0.005

▶ SMC-TYPE

※ Carbide Type

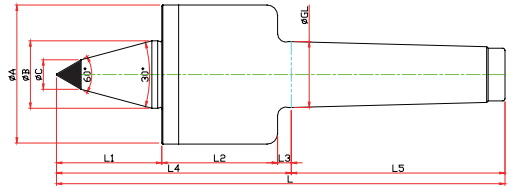


Model	Order Number	Morse Taper	Dimension										Weight MAX.	R.P.M MAX.	Run Out
			GL	A	B	L1	L2	L3	L4	L5	C	L			
LC-3SMC	040103	NO.3	23.825	52	22	30	51	5	86	81	10	167	330	12000	0.003
LC-4SMC	040104	NO.4	31.267	66	32	41	55	6.5	102.5	101.5	14	204	1100	10000	0.003
LC-5SMC	040105	NO.5	44.399	82	40	51	75	6.5	132.5	129.5	18	262	2200	8000	0.005

LC-NK · NKD TYPE

▶ SMBC-TYPE

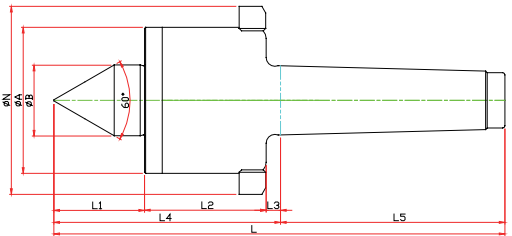
- ※ SHAFT EXTENSION(Minimize the bite-interference)
- ※ Carbide Type



Model	Order Number	Morse Taper	Dimension											Weight MAX.	R.P.M MAX.	Run Out
			GL	A	B	b	L1	L2	L3	L4	L5	C	L			
LC-3SMBC	041103	NO.3	23.825	52	22	10	40	51	5	96	81	10	177	330	12000	0.003
LC-4SMBC	041104	NO.4	31.267	66	32	14	50	55	6.5	111.5	101.5	14	213	1100	10000	0.003
LC-5SMBC	041105	NO.5	44.399	82	40	16	65	75	6.5		129.5	16	276	2200	8000	0.005

▶ SMN-TYPE

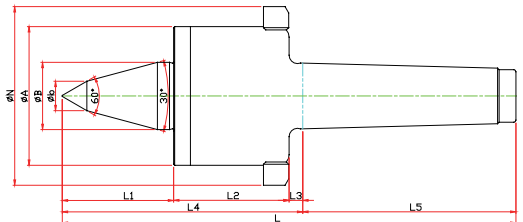
- ※ Nut Type



Model	Order Number	Morse Taper	Dimension										Weight MAX.	R.P.M MAX.	Run Out
			GL	A	B	L1	L2	L3	L4	L5	N	L			
LC-3SMN	040013	NO.3	23.825	52	22	30	51	5	86	81	70	167	330	12000	0.003
LC-4SMN	040014	NO.4	31.267	66	32	41	55	6.5	102.5	101.5	85	204	1100	10000	0.003
LC-5SMN	040015	NO.5	44.399	82	40	51	75	6.5	132.5	129.5	105	262	2200	8000	0.005

▶ SMBN-TYPE

- ※ SHAFT EXTENSION(Minimize the bite-interference)
- ※ Nut Type

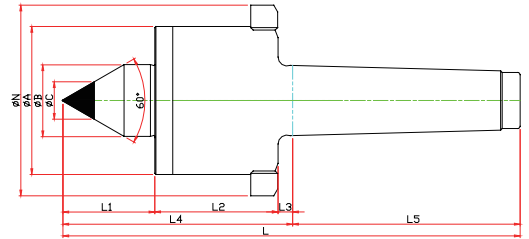


Model	Order Number	Morse Taper	Dimension											Weight MAX.	R.P.M MAX.	Run Out
			GL	A	B	b	L1	L2	L3	L4	L5	N	L			
LC-3SMBN	041013	NO.3	23.825	52	22	10	40	51	5	96	81	70	177	330	12000	0.003
LC-4SMBN	041014	NO.4	31.267	66	32	14	50	55	6.5	111.5	101.5	85	213	1100	10000	0.003
LC-5SMBN	041015	NO.5	44.399	82	40	16	65	75	6.5	146.5	129.5	105	276	2200	8000	0.005

GR · SM TYPE

▶ SMCN-TYPE

※ Nut, Carbide Type Type

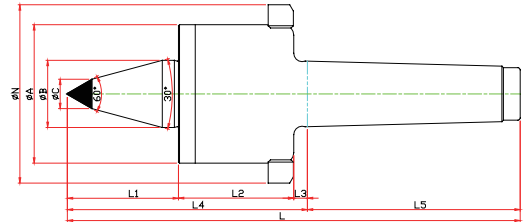


Model	Order Number	Morse Taper	Dimension											Weight MAX.	R.P.M MAX.	Run Out
			GL	A	B	C	D	E	F	G	N	T	L			
LC-3SMCN	040113	NO.3	23.825	52	22	30	51	5	86	81	70	10	167	300	12000	0.003
LC-4SMCN	040114	NO.4	31.267	66	32	41	55	6.5	102.5	101.5	85	14	204	1100	10000	0.003
LC-5SMCN	040115	NO.5	44.399	82	40	51	75	6.5	132.5	129.5	105	16	262	2200	8000	0.005

▶ SMBCN-TYPE

※ SHAFT EXTENTION(Minimize the bite-interference)

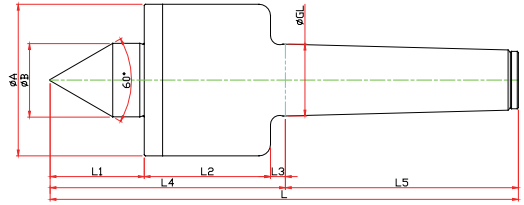
※ Nut, Carbide Type Type



Model	Order Number	Morse Taper	Dimension											Weight MAX.	R.P.M MAX.	Run Out	
			GL	A	B	b	L1	L2	L3	L4	L5	C	N				L
LC-3SMBCN	041113	NO.3	23.825	52	22	10	40	51	5	96	81	10	70	177	330	12000	0.003
LC-4SMBCN	041114	NO.4	31.267	66	32	14	50	55	6.5	111.5	101.5	14	85	213	1100	10000	0.003
LC-5SMBCN	041115	NO.5	44.399	82	40	16	65	75	6.5	146.5	129.5	16	105	276	2200	8000	0.005

SMP TYPE

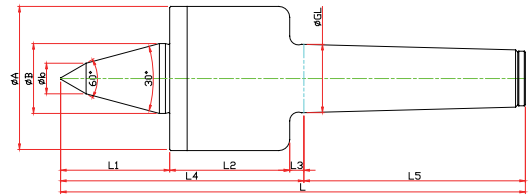
▶ SMP-TYPE



Model	Order Number	Morse Taper	Dimension									Weight MAX.	R.P.M MAX.	Run Out
			GL	A	B	L1	L2	L3	L4	L5	L			
LC-3SMP	050003	NO.3	23.825	52	22	30	51	5	86	81	167	330	12000	0.003
LC-4SMP	050004	NO.4	31.267	66	32	41	55	6.5	102.5	101.5	204	1100	10000	0.003
LC-5SMP	050005	NO.5	44.399	82	40	51	75	6.5	132.5	129.5	262	2200	8000	0.005

▶ SMPB-TYPE

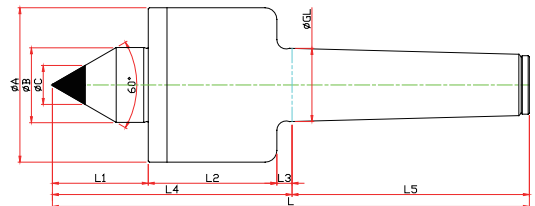
※ SHAFT EXTENSION(Minimize the bite-interference)



Model	Order Number	Morse Taper	Dimension									Weight MAX.	R.P.M MAX.	Run Out	
			GL	A	B	b	L1	L2	L3	L4	L5				L
LC-3SMPB	051003	NO.3	23.825	52	22	10	40	51	5	96	81	177	330	12000	0.003
LC-4SMPB	051004	NO.4	31.267	66	32	14	50	55	6.5	111.5	101.5	213	1100	10000	0.003
LC-5SMPB	051005	NO.5	44.399	82	40	16	65	75	6.5	146.5	129.5	276	2200	8000	0.005

▶ SMPC-TYPE

※ Carbide Type

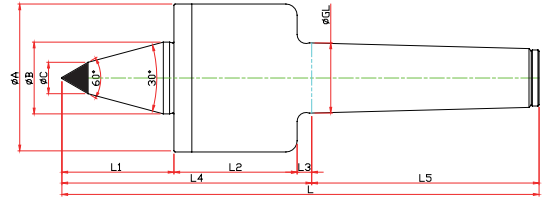


Model	Order Number	Morse Taper	Dimension									Weight MAX.	R.P.M MAX.	Run Out	
			GL	A	B	L1	L2	L3	L4	L5	C				L
LC-3SMPC	050103	NO.3	23.825	52	22	30	51	5	86	81	10	167	330	12000	0.003
LC-4SMPC	050104	NO.4	31.267	66	32	41	55	6.5	102.5	101.5	14	204	1100	10000	0.003
LC-5SMPC	050105	NO.5	44.399	82	40	51	75	6.5	132.5	129.5	18	262	2200	8000	0.005

SMP TYPE

▶ SMPBC-TYPE

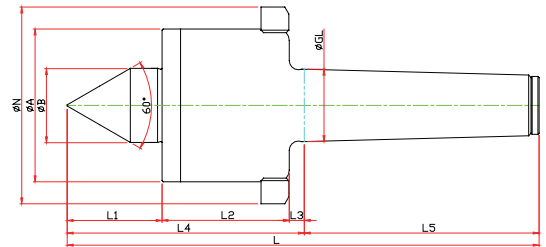
- ※ SHAFT EXTENTION(Minimize the bite-interference)
- ※ Carbide Type



Model	Order Number	Morse Taper	Dimension											Weight MAX.	R.P.M MAX.	Run Out
			GL	A	B	b	L1	L2	L3	L4	L5	C	L			
LC-3SMPBC	051103	NO.3	23.825	52	22	10	40	51	5	96	81	10	177	330	12000	0.003
LC-4SMPBC	051104	NO.4	31.267	66	32	14	50	55	6.5	111.5	101.5	14	213	1100	10000	0.003
LC-5SMPBC	051105	NO.5	44.399	82	40	16	65	75	6.5	146.5	129.5	18	276	2200	8000	0.005

▶ SMPN-TYPE

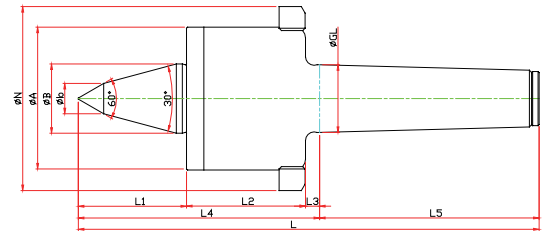
- ※ Nut Type



Model	Order Number	Morse Taper	Dimension											Weight MAX.	R.P.M MAX.	Run Out
			GL	A	B	L1	L2	L3	L4	L5	N	L				
LC-3SMPN	050013	NO.3	23.825	52	22	30	51	5	86	81	70	167	330	12000	0.003	
LC-4SMPN	050014	NO.4	31.267	66	32	41	55	6.5	102.5	101.5	85	204	1100	10000	0.003	
LC-5SMPN	050015	NO.5	44.399	82	40	51	75	6.5	132.5	129.5	105	262	2200	8000	0.005	

▶ SMPBN-TYPE

- ※ SHAFT EXTENTION(Minimize the bite-interference)
- ※ Nut Type

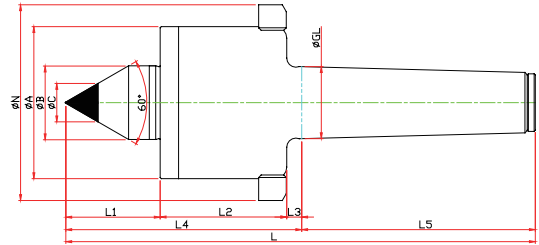


Model	Order Number	Morse Taper	Dimension											Weight MAX.	R.P.M MAX.	Run Out
			GL	A	B	b	L1	L2	L3	L4	L5	N	L			
LC-3SMPBN	051013	NO.3	23.825	52	22	10	40	51	5	96	81	70	177	330	12000	0.003
LC-4SMPBN	051014	NO.4	31.267	66	32	14	50	55	6.5	111.5	101.5	85	213	1100	10000	0.003
LC-5SMPBN	051015	NO.5	44.399	82	40	16	65	75	6.5	146.5	129.5	105	276	2200	8000	0.005

SMP TYPE

▶ SMPCN-TYPE

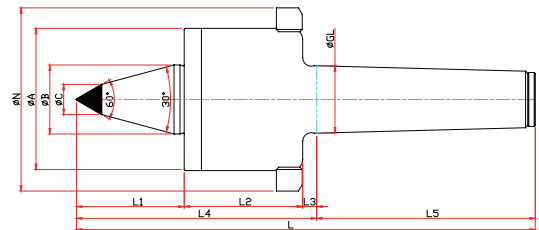
※ Carbide, Nut Type



Model	Order Number	Morse Taper	Dimension											Weight MAX.	R.P.M MAX.	Run Out
			GL	A	B	L1	L2	L3	L4	L5	C	N	L			
LC-3SMPCN	050113	NO.3	23.825	52	22	30	51	5	86	81	10	70	167	330	12000	0.003
LC-4SMPCN	050114	NO.4	31.267	66	32	41	55	6.5	102.5	101.5	14	85	204	1100	10000	0.003
LC-5SMPCN	050115	NO.5	44.399	82	40	51	75	6.5	132.5	129.5	18	105	262	2200	8000	0.005

▶ SMPBCN-TYPE

※ SHAFT EXTENTION(Minimize the bite-interference)
 ※ Nut, Carbide Type Type



Model	Order Number	Morse Taper	Dimension											Weight MAX.	R.P.M MAX.	Run Out	
			GL	A	B	b	L1	L2	L3	L4	L5	C	N				L
LC-3SMPBCN	051113	NO.3	23.825	52	22	10	40	51	5	96	81	10	70	177	330	12000	0.003
LC-4SMPBCN	051114	NO.4	31.267	66	32	14	50	55	6.5	111.5	101.5	14	85	213	1100	10000	0.003
LC-5SMPBCN	051115	NO.5	44.399	82	40	16	65	75	6.5	146.5	129.5	16	105	276	2200	8000	0.005

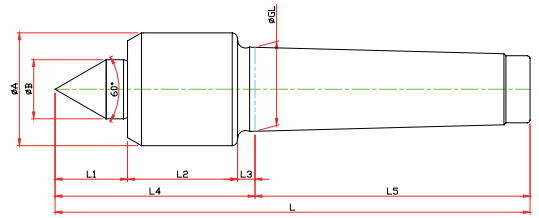
▶ SMP SPECIAL

※ Customized-special production for user's condition



D50 TYPE

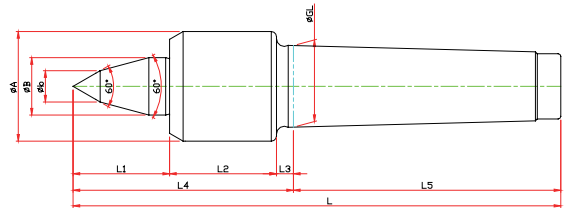
► D50-TYPE



Model	Order Number	Morse Taper	Dimension										Weight MAX.	R.P.M MAX.	Run Out
			GL	A	B	L1	L2	L3	L4	L5	L				
LC-3D50	080350	NO.3	23.825	34	22	21	38	5	64	81	145	400	4800	0.003	
LC-4D50	080450	NO.4	31.267	42	22	27	41	6.5	74.5	102.5	177	800	3800	0.003	
LC-5D50	080550	NO.5	44.399	58	32	35	60	6.5	101.5	129.5	231	1600	3400	0.005	

► D50B-TYPE

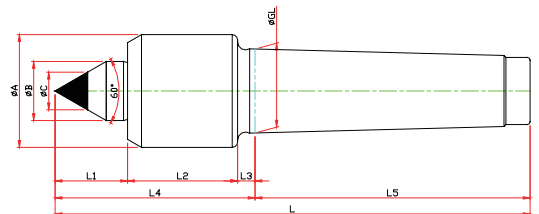
※ SHAFT EXTENTION(Minimize the bite-interference)



Model	Order Number	Morse Taper	Dimension										Weight MAX.	R.P.M MAX.	Run Out
			GL	A	B	b	L1	L2	L3	L4	L5	L			
LC-3D50B	082350	NO.3	23.825	34	22	10	25	38	5	72	81	153	400	4800	0.003
LC-4D50B	082450	NO.4	31.267	42	22	12	36	41	6.5	83.5	102.5	186.5	800	3800	0.003
LC-5D50B	082550	NO.5	44.399	58	32	16	53	60	6.5	119.5	129.5	249	1600	3400	0.005

► D50C-TYPE

※ Carbide Type

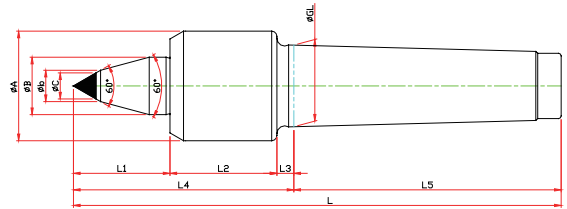


Model	Order Number	Morse Taper	Dimension										Weight MAX.	R.P.M MAX.	Run Out
			GL	A	B	L1	L2	L3	L4	L5	C	L			
LC-3D50C	081350	NO.3	23.825	34	22	21	38	5	64	81	10	145	400	4800	0.003
LC-4D50C	081450	NO.4	31.267	42	22	27	41	6.5	74.5	102.5	14	177	800	3800	0.003
LC-5D50C	081550	NO.5	44.399	58	32	60	60	6.5	101.5	129.5	18	231	1600	3400	0.005

D50 TYPE

▶ D50BC-TYPE

- ※ SHAFT EXTENTION(Minimize the bite-interference)
- ※ Carbide Type



Model	Order Number	Morse Taper	Dimension											Weight MAX.	R.P.M MAX.	Run Out
			GL	A	B	b	L1	L2	L3	L4	L5	C	L			
LC-3D50BC	083350	NO.3	23.825	34	22	10	25	38	5	72	81	8	153	400	4800	0.003
LC-4D50BC	083450	NO.4	31.267	42	22	12	36	41	6.5	83.5	102.5	10	186.5	800	3800	0.003
LC-5D50BC	083550	NO.5	44.399	58	32	16	53	60	6.5	119.5	129.5	14	249	1600	3400	0.005

▶ D50 SPECIAL

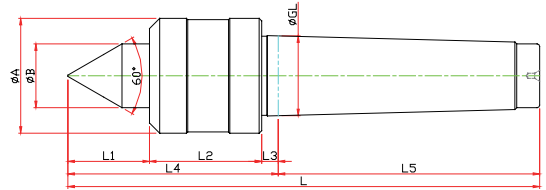
- ※ Customized-special production for user's condition



HD TYPE

▶ HD-TYPE

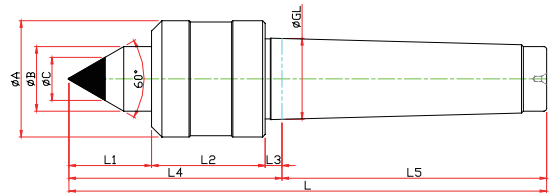
※ Economical live center



Model	Order Number	Morse Taper	Dimension									Weight MAX.	R.P.M MAX.	Run Out
			GL	A	B	L1	L2	L3	L4	L5	L			
LC-1HD	070001	NO.1	12.065	34	15	21	37	3.5	61.5	53.5	115	120	5000	0.003
LC-2HD	070002	NO.2	17.780	40	18	24	37	5	66	64	130	140	4000	0.003
LC-3HD	070003	NO.3	23.825	45	25	32	44	5	81	81	162	190	3800	0.003
LC-4HD	070004	NO.4	31.267	45	25	32	44	6.5	82.5	102.5	185	190	3800	0.003
LC-5HD	070005	NO.5	44.399	78	38	47	66	6.5	119.5	129.5	249	350	2000	0.005
LC-6HD	070006	NO.6	63.384	102	55	62	82	8	152	182	334	1200	2000	0.005

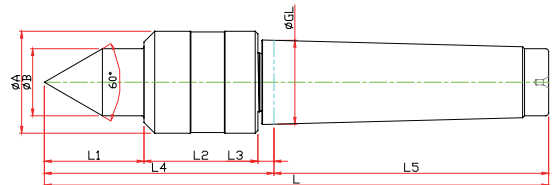
▶ HDC-TYPE

※ Carbide Type



Model	Order Number	Morse Taper	Dimension										Weight MAX.	R.P.M MAX.	Run Out
			GL	A	B	L1	L2	L3	L4	L5	C	L			
LC-3HDC	071003	NO.3	23.825	25	45	32	44	5	81	81	10	162	190	3800	0.003
LC-4HDC	071004	NO.4	31.267	25	45	32	44	6.5	82.5	102.5	14	185	190	3800	0.003
LC-5HDC	071005	NO.5	44.399	38	78	47	66	6.5	119.5	129.5	18	249	350	2000	0.005
LC-6HDC	071006	NO.6	63.384	55	102	62	82	8	152	182	25	334	1200	2000	0.005

▶ HDS-TYPE

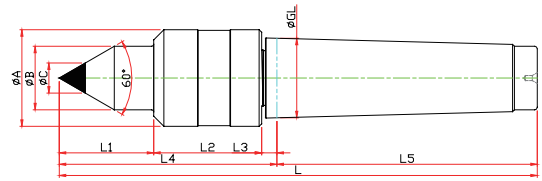


Model	Order Number	Morse Taper	Dimension									Weight MAX.	R.P.M MAX.	Run Out
			GL	A	B	L1	L2	L3	L4	L5	L			
LC-2HDS	070012	NO.2	17.780	34	15	25	40	5	70	64	134	70	4500	0.003
LC-3HDS	070013	NO.3	23.825	36	18	27.5	40.5	5	73	81	154	80	4500	0.003
LC-4HDS	070014	NO.4	31.267	38	22	32	42.5	6	80.5	102.5	183	80	4500	0.003
LC-5HDS	070015	NO.5	44.399	64	30	47	56.5	10	113.5	129.5	243	230	2000	0.005
LC-6HDS	070016	NO.6	63.384	86	42	60	66.5	10	136.5	182	318.5	600	1500	0.005

HD TYPE

▶ HDSC-TYPE

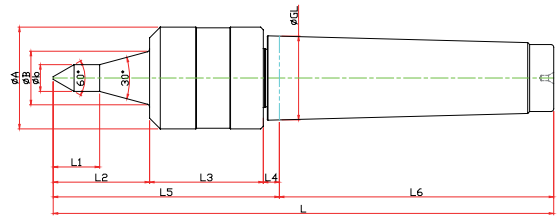
- ※ Economical live center
- ※ Suitable for lathe
- ※ Optimal RPM(below 3,800)



Model	Order Number	Morse Taper	Dimension										Weight MAX.	R.P.M MAX.	Run Out
			GL	A	B	L1	L2	L3	L4	L5	C	L			
LC-3HDSC	071012	NO.3	23.825	36	18	27.5	40.5	5	73	81	10	154	80	4500	0.003
LC-4HDSC	071013	NO.4	31.267	38	22	32	42.5	6	80.5	102.5	14	183	80	4500	0.003
LC-5HDSC	071014	NO.5	44.399	64	30	47	56.5	10	113.5	129.5	18	243	230	2000	0.005
LC-6HDSC	071015	NO.6	63.384	86	42	60	66.5	10	136.5	182	30	318.5	600	1500	0.005

▶ HDSTH-TYPE

- ※ The type of thread milling
- ※ triplexed bearing fit
- ※ Structure resistant to coolant
- ※ Optimal RPM(below 3,800)



Model	Order Number	Morse Taper	Dimension											Weight MAX.	R.P.M MAX.	Run Out
			GL	A	B	b	L1	L2	L3	L4	L5	L6	L			
LC-3HDSTH-06	073011	NO.3	23.825	36	18	6	12.6	35	40.5	5	80.5	81	161.5	55		
LC-3HDSTH-08	073012					8	16.3									
LC-3HDSTH-10	073013					10	20.1									
LC-3HDSTH-12	073014				12	23.8										
LC-4HDSTH-06	074011	NO.4	31.267	38	20	6	10.1	36.2	40.5	6	84.5	102.5	187	65	3800	0.003
LC-4HDSTH-08	074012					8	13.9									
LC-4HDSTH-10	074013					10	17.6									
LC-4HDSTH-12	074014				12	21.3										
LC-5HDSTH-06	075011	NO.5	44.399	64	24	6	13.4	47	56.5	10	113.5	129.5	243	150		
LC-5HDSTH-08	075012					8	17.1									
LC-5HDSTH-10	075013					10	20.8									
LC-4HDSTH-12	075014				12	24.6										

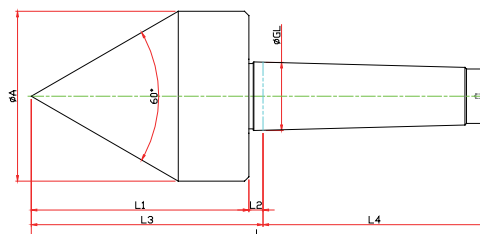
▶ HD SPECIAL



PT TYPE

▶ PT-60 TYPE

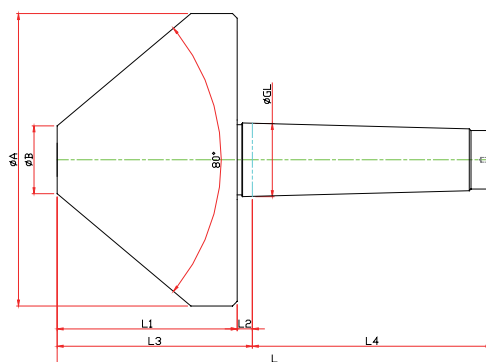
- ※ For PIPE machining
- ※ Optimal RPM(below 3,800)



Model	Order Number	Morse Taper	Dimension							Weight MAX.	R.P.M MAX.	Run Out
			GL	A	L1	L2	L3	L4	L			
LC-2PT-60	066002	NO.2	17.780	44	66	5	71	64	135	70	4500	0.003
LC-3PT-60	066003	NO.3	23.825	56	78.5	5	83.5	81	164.5	80	4500	0.003
LC-4PT-60	066004	NO.4	31.267	78	100	6.5	106.5	101.5	208	80	4500	0.003
LC-5PT-60	066005	NO.5	44.399	98	125	6.5	131.5	129.5	261	230	2000	0.005
LC-6PT-60	066006	NO.6	63.384	118	154	8	162	182	344	600	1500	0.005

▶ PT-80 TYPE

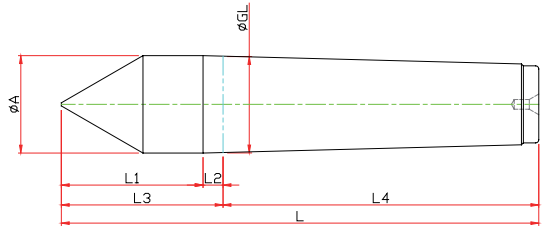
- ※ For PIPE machining
- ※ Optimal RPM(below 3,800)



Model	Order Number	Morse Taper	Dimension								Weight MAX.	R.P.M MAX.	Run Out
			GL	A	B	L1	L2	L3	L4	L			
LC-3PT-80	068003	NO.3	23.825	95	20	66	5	65	81	146	190	3800	0.003
LC-4PT-80	068004	NO.4	31.267	125	29	77	6.5	83.5	102.5	185	190	3800	0.003
LC-5PT-80	068005	NO.5	44.399	150	32	90	6.5	96.5	129.5	226	350	2000	0.005
LC-6PT-80	068006	NO.6	63.384	200	38	120	8	128	182	310	1200	1500	0.005

LM CENTER

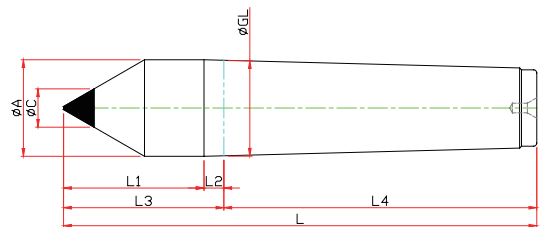
▶ LM-A TYPE



Model	Order Number	Morse Taper	Dimension							Run Out
			GL	A	L1	L2	L3	L4	L	
LM-1A	110001	NO.1	12.065	12.2	25	3.5	28.5	53.5	82	0.003
LM-2A	110002	NO.2	17.780	18	31	5	36	64	100	0.003
LM-3A	110003	NO.3	23.825	24	39	5	44	81	125	0.003
LM-4A	110004	NO.4	31.267	31.6	46	6.5	52.5	102.5	155	0.003
LM-5A	110005	NO.5	44.399	44.7	64	6.5	70.5	129.5	200	0.003
LM-6A	110006	NO.6	63.348	63.8	80	8	88	182	270	0.005
LM-7A	110007	NO.7	83.058	83.6	105	10	115	250	365	0.005

▶ LM-C TYPE

※ Carbide Type

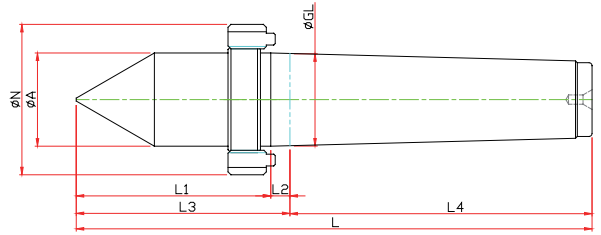


Model	Order Number	Morse Taper	Dimension								Run Out
			GL	A	L1	L2	L3	L4	C	L	
LM-1C	110101	NO.1	12.065	12.2	25	3.5	28.5	53.5	7	82	0.003
LM-2C	110102	NO.2	17.780	18	31	5	36	64	7	100	0.003
LM-3C	110103	NO.3	23.825	24	39	5	44	81	10	125	0.003
LM-4C	110104	NO.4	31.267	31.6	46	6.5	52.5	102.5	14	155	0.003
LM-5C	110105	NO.5	44.399	44.7	64	6.5	70.5	129.5	18	200	0.003
LM-6C	110106	NO.6	63.348	63.8	80	8	88	182	25	270	0.005
LM-7C	110107	NO.7	83.058	83.6	105	10	115	250	30	365	0.005

LM CENTER

▶ LM-AN TYPE

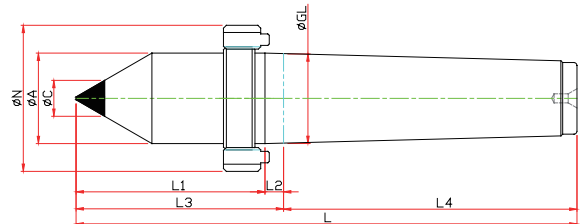
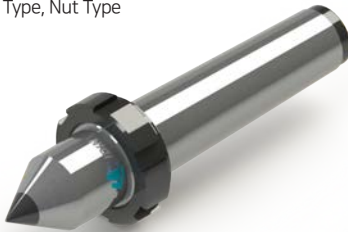
※ Nut Type



Model	Order Number	Morse Taper	Dimension								Run Out
			GL	A	L1	L2	L3	L4	N	L	
LM-1AN	110011	NO.1	12.065	12.2	31.5	5	36.5	53.5	M16	90	0.003
LM-2AN	110012	NO.2	17.780	18	41.5	6.5	48	64	M22	112	0.003
LM-3AN	110013	NO.3	23.825	24	49.5	7.5	57	81	M27	138	0.003
LM-4AN	110014	NO.4	31.267	31.6	62.5	10	72.5	102.5	M36	175	0.003
LM-5AN	110015	NO.5	44.399	44.7	77	11	88	129.6	M48	217.5	0.003
LM-6AN	110016	NO.6	63.348	63.8	96.5	11.5	108	182	M68	290	0.005
LM-7AN	110017	NO.7	83.058	83.6	108.5	11.5	120	250	M90	370	0.005

▶ LM-CN TYPE

※ Carbide Type, Nut Type



Model	Order Number	Morse Taper	Dimension									Run Out
			GL	A	L1	L2	L3	L4	C	N	L	
LM-1CN	110111	NO.1	12.065	12	31.5	5	36.5	53.5	7	M16	90	0.003
LM-2CN	110112	NO.2	17.780	18	41.5	6.5	48	64	7	M22	112	0.003
LM-3CN	110113	NO.3	23.825	24	49.5	7.5	57	81	10	M27	138	0.003
LM-4CN	110114	NO.4	31.267	32	62.5	10	72.5	102.5	14	M36	175	0.003
LM-5CN	110115	NO.5	44.399	45	77	11	88	129.5	18	M48	217.5	0.003
LM-6CN	110116	NO.6	63.348	64	96.5	11.5	108	182	18	M68	290	0.005

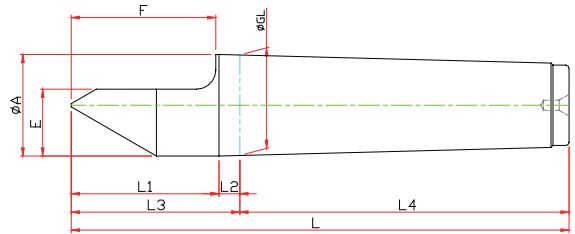
▶ LM SPECIAL

※ Customized-special production for user's condition



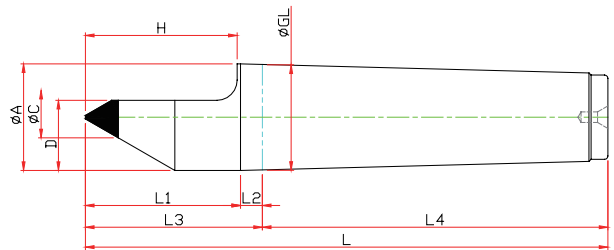
LM-H CENTER

▶ LM-H TYPE



Model	Order Number	Morse Taper	Dimension									Run Out
			GL	A	L1	L2	L3	L4	E	F	L	
LM-1H	110001	NO.1	12.065	12.2	25	3.5	28.5	53.5	7.6	22	82	0.003
LM-2H	110002	NO.2	17.780	18	31	5	36	64	11	30	100	0.003
LM-3H	110003	NO.3	23.825	24	39	5	44	81	15	38	125	0.003
LM-4H	110004	NO.4	31.267	31.6	46	6.5	52.5	102.5	21	45	155	0.003
LM-5H	110005	NO.5	44.399	44.7	64	6.5	70.5	129.5	27.4	63	200	0.003
LM-6H	110006	NO.6	63.348	63.8	80	8	88	182	38.9	79	270	0.005

▶ LM-HC TYPE

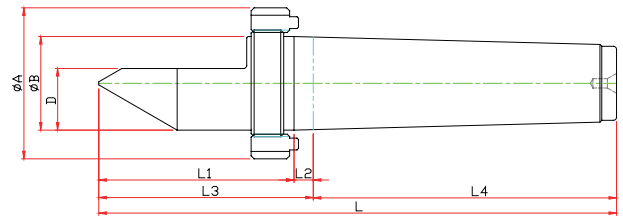


Model	Order Number	Morse Taper	Dimension										Run Out
			GL	A	L1	L2	L3	L4	C	D	H	L	
LM-1HC	210101	NO.1	12.065	12.2	25	3.5	28.5	53.5	7	7.6	22	82	0.003
LM-2HC	210102	NO.2	17.780	18	31	5	36	64	7	11	30	100	0.003
LM-3HC	210103	NO.3	23.825	24	39	5	44	81	10	15	38	125	0.003
LM-4HC	210104	NO.4	31.267	31.6	46	6.5	52.5	102.5	14	21	45	125	0.003
LM-5HC	210105	NO.5	44.399	44.7	64	6.5	70.5	129.5	18	27.4	63	200	0.003
LM-6HC	210106	NO.6	63.348	63.8	80	8	88	182	25	38.9	79	270	0.005

LM-H CENTER

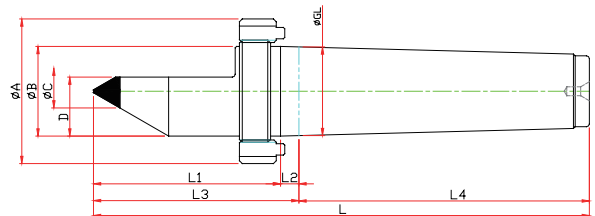
▶ LM-HN TYPE

※ Nut Type



Model	Order Number	Morse Taper	Dimension										Run Out
			GL	A	L1	L2	L3	L4	D	E	N	L	
LM-1HN	210011	NO.1	12.065	12	31.5	5	36.5	53.5	7.6	22	M16	90	0.003
LM-2HN	210012	NO.2	17.780	18	41.5	6.5	48	64	11	30	M22	112	0.003
LM-3HN	210013	NO.3	23.825	24	49.5	7.5	57	81	15	38	M27	138	0.003
LM-4HN	210014	NO.4	31.267	32	62.5	10	72.5	102.5	21	50	M36	175	0.003
LM-5HN	210015	NO.5	44.399	45	77	11	88	129.5	29.4	63	M48	217.5	0.003
LM-6HN	210016	NO.6	63.348	64	96.5	11.5	108	182	42	79	M68	290	0.005

▶ LM-HCN TYPE



Model	Order Number	Morse Taper	Dimension											Run Out
			GL	A	L1	L2	L3	L4	C	D	E	N	L	
LM-1HCN	210111	NO.1	12.065	12	31.5	5	36.5	53.5	7	7.6	22	M16	90	0.003
LM-2HCN	210112	NO.2	17.780	18	41.5	6.5	48	64	7	11	30	M22	112	0.003
LM-3HCN	210113	NO.3	23.825	24	49.5	7.5	57	81	10	15	38	M27	138	0.003
LM-4HCN	210114	NO.4	31.267	32	62.5	10	72.5	102.5	14	21	50	M36	175	0.003
LM-5HCN	210115	NO.5	44.399	45	77	11	88	129.5	18	29.4	63	M48	217.5	0.003
LM-6HCN	210116	NO.6	63.348	64	96.5	11.5	108	182	18	42	79	M68	290	0.005

▶ LM-H SPECIAL

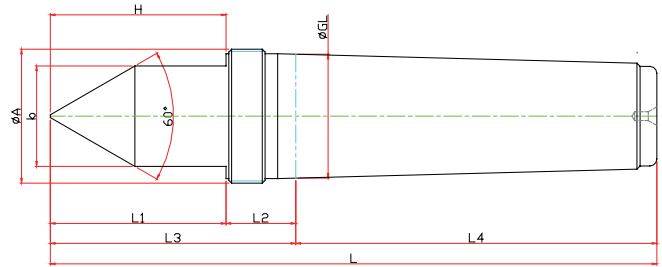
※ Customized-special production for user's condition



LM-FN TYPE

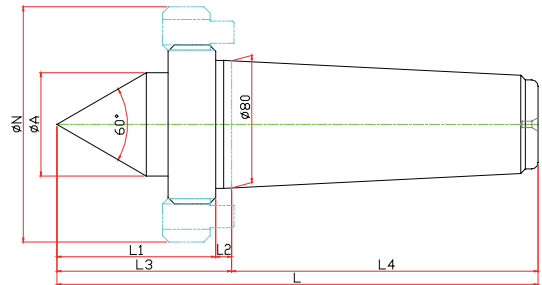
▶ LM-FN TYPE

※ Spanner Type



Model	Order Number	Morse Taper	Dimension									Run Out
			GL	A	b	L1	L2	L3	L4	E	L	
LM-1FN	120011	NO.1	12.065	12.2	10	25	3.5	28.5	53.5	22	82	0.003
LM-2FN	120012	NO.2	17.780	18	14	31	5	36	64	30	100	0.003
LM-3FN	120013	NO.3	23.825	24	19	39	5	44	81	38	125	0.003
LM-4FN	120014	NO.4	31.267	31.6	27	46	6.5	52.5	102.5	50	155	0.003
LM-5FN	120015	NO.5	44.399	44.7	36	64	6.5	70.5	129.5	53	200	0.003

▶ LM-#80 TYPE



Model	Order Number	Morse Taper	Dimension									Run Out
			GL	A	b	L1	L2	L3	L4	E	L	
#80-60	260010	1/10 TAPER	80	65	148	70	30	10	110	193	303	0.005
#80-75	275010	1/10 TAPER	80	65	148	70	30	10	110	193	303	0.005