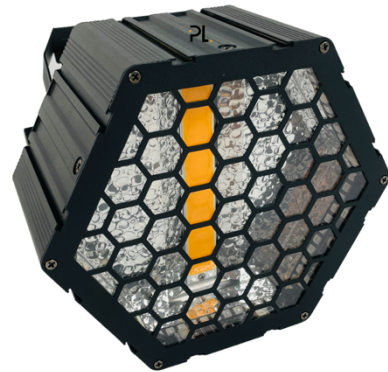
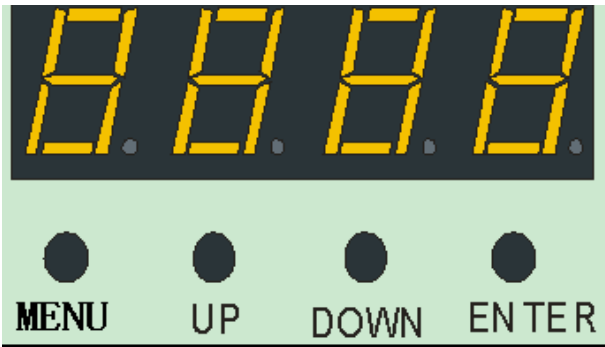


# 519B-A122-Instructions for Single Retro Lamp

## 一、 Definition of display panel and buttons



Menu keys: selecting functions

Up key: parameter increment

Down arrow: parameter decrement

Confirm key: Confirm and save

## 二、 Menu Menu

After powering on, press the menu button and the menu menu will appear in sequence; Press the up or down button to modify the function parameters, and press the confirm button to save the current function and parameters (with power down memory after saving).

A001	➡	A512	Set the address code, modify it up or down (A001~A512), and save it with the confirm button。
CH10	➡	CH73	Switch up or down the CH04, CH10, and CH73 channels, and save with the confirm button. Default CH10
M000	➡	M127	Effect mode, switch built-in effects up or down, confirm key to save。
S000	➡	S255	Modify the running speed of hexagonal built-in effects (S000~S255) up or down, and save with the confirm button。
Soud	➡	Soud	Audio Mode。
R255	➡	R000	Adjust the brightness of the red light bead up or down (R000~R255) by using the R red light bead dimming function, and save with the confirm button。
G255	➡	G000	G green bead dimming, modify the brightness of the green bead up or down (G000~G255), confirm and save。
B255	➡	B000	B blue light bead dimming, modify the brightness of the blue light bead up or down (B000~B255), confirm and save。
W255	➡	W000	W monochrome light brightness, modify monochrome light brightness up or down (W000~W255), confirm to save。
T000			Display temperature, such as T045, indicating that the current lamp temperature is 45 ℃

## 三、 Master slave control

Two or more identical lighting fixtures are connected with a three core signal wire using a DMA. All lighting fixtures are set to any address code from A001 to A512, with any one set as the host and the other lighting fixtures as the slave. All slave display screens do not flash; When using the host to adjust the gradient, pulse, jump, voice control, and self-propelled effects, all slaves synchronize the gradient, pulse, jump, voice control, and self-propelled effects。

Special note:

## 519B-A122-Instructions for Single Retro Lamp

1. Only one host can be set for a group of lighting fixtures. If there are multiple hosts, all lighting fixtures will flash randomly and not synchronize.
2. All lighting fixtures must be functional when the DMX512 console is turned off.

### 四、Factory settings

When entering any address code from A001 to A512, press the menu button for 3 seconds to enter the factory settings. The factory settings mainly include the output power of each lamp, fan setting mode, temperature protection point setting, and parameter sending functions. In any mode, press the menu button for 3 seconds to exit.

**Factory Settings Table:**

R255	→	R020	R red bead current setting, modify the hexagonal red bead current (R020-R255) up or down, and confirm to save.
G255	→	G020	G green bead current setting, modify the hexagonal green bead current (G020-G255) up or down, and confirm to save.
B255	→	B020	B blue bead current setting, modify the hexagonal blue bead current (B020-B255) up or down, and confirm to save.
W255	→	W020	W monochrome light current setting, modify the monochrome light current setting up or down (W020~W255), confirm and save.
FAN1	→	FAN0	Fan setting: When the FAN0 light bead is on, start the fan. When FAN1 reaches the set temperature protection point, start the fan. Press the confirm button to save.
T040	→	T-105	Set the temperature protection point, modify the parameters up or down (40 °C~75 °C), and press the confirm button to save.
Send	→	Send	Send the factory setting parameters of the machine up or down to all other three core signal wires connected in parallel for lighting fixtures; Confirm sending parameters by pressing the menu button for 3 seconds Exit, deny parameters, press the confirm button to cancel sending.

### 五、DMX512 console

After powering on, set the address codes of all lighting fixtures. Connect all lighting fixtures in parallel with a three core signal wire to the DMX512 console, and the address code will stop flashing, indicating that the DMX512 console signal has been sent to the lighting fixtures. According to the instructions of each channel, use the DMX512 console to control relevant functions.

**CH10 Channel Description:**

channel	channel value	basic functio
1	000-255	Total aperture
2	000-255	Strobing
3	000-255	Red bead linear dimming
4	000-255	Green bead linear dimming
5	000-255	Blue bead linear dimming
6	000-255	White Beads Linear Dimming
7	000-255	RGB Mode self-propelled
8	000-255	Mode speed
9	000-255	Background
10	000-255	Background color brightness

# 519B-A122-Instructions for Single Retro Lamp

## CH4 Channel Description:

channel	channel value	basic functio
1	000-255	Red bead linear dimming
2	000-255	Green bead linear dimming
3	000-255	Blue bead linear dimming
4	000-255	White Beads Linear Dimming

## CH73 Channel Description:

channel	Channel value	effect
1	000-255	Group 1 Red Beads Linear Dimming
2	000-255	Group 1 Green Beads Linear Dimming
3	000-255	Group 1 Blue Beads Linear Dimming
4	000-255	Group 2 Red Beads Linear Dimming
5	000-255	Group 2 Green Beads Linear Dimming
6	000-255	Group 2 Blue Beads Linear Dimming
...	...	...
70	000-255	Group 24 Red Beads Linear Dimming
71	000-255	Group 24 Green Beads Linear Dimming
72	000-255	Group 24Blue Beads Linear Dimming
73	000-255	White Beads Linear Dimming

## 六、Mode effect

channel	Channel value	effect
0-1	0	No effect
2-3	1	Effect 1
4-5	2	Effect 2
6-7	3	Effect 3
8-9	4	Effect 4
...	...	...
250-251	125	Effect 125
252-253	126	Effect 126
254-255	127	Effect 127

### 七、 Technical Parameter:

Voltage: AC100~220V 50/60HZ

Power: 72 \* 0.25W (18W)+60W

Beads: 72 5050 three color LED beads+long white light beads

Control mode: DMX512, self-propelled, master-slave, voice control, with RDM function.

Channel: CH010, CH04, CH73

Dimming: 32bit 0-100% linear dimming

Features: Dyeing+Explosion+Auxiliary Light

Working temperature: -30 ° C~50 ° C

Strobe frequency: 1-30Hz

Appearance: Metal, black

Connection method: DMX512 input/output/power input/output.

IP level: IP20