

2m Battery LED Tube Light

User Manual



This manual contains important information.
Please read before operating fixture.

Contents

1. SECURITY TIPS	2
2. TECHNOLOGY REFERENCE	3
3. Photometric report	4
4. Board Instruction	5
4.1 Control Panel	5
4.2 Operate menu	5
4.3 Ways to control	7
4.4 controlled by infrared	7
4.5 controlled by wired DMX	9
4.6 controlled by wireless DMX	9
3.51 Guangzhou Wireless dmx	9
3.52 Sweden Wireless	9
5. DMX CHANNEL SHEET	10
6. Package contents	12
7. Handling	12
7.1 Mounting Accessories	12
1.1.1 Small tripod	错误！未定义书签。
7.1.2 Wing plate	12
7.1.3 Rings	13
7.1.4 4 in one fixing plate	14
7.1.5 Adapt piece	14
7.1.6 Big tripod	15
7.1.7 Support base	15
7.1.7 Charging box	16
7.2 Battery	16
8. FIXED EQUIPMENT	17
Warranty Card	20
Note:	20

1. SECURITY TIPS

WARNING!!! To reduce the risk of fire, electric shock, or injury to persons, follow these important safety instructions:

- non-professionals, not to disassemble the light arbitrarily and lighting accessories inside.
- rated voltage range: AC110V-120V/60Hz or AC200V-240V / 50HZ (to be selected).
- not beam irradiate the flammable materials, flammable materials and the lamp should be maintained at least 1M over the distance.
- lamps used in ambient temperature: -15 °C -40 °C , the highest temperature of the surface of the lamp: 60 °C .
- to keep away from the liquid substance and humid environment.
- before using the lights must ensure the good grounding, can not install charging and remove any parts.
- the installation of lamps, must be fixed screw fasteners with additional security cable and regular inspection.
- lamps consecutive working hours is not recommended more than 10 hours.
- should stop using the lights in time when happens unusual conditions during the process
- lamp parts of the rotation, external accessories and paste parts should be regular inspected, such as the emergence of loose and rock, should be reinforced in a timely manner to prevent the accident.
- lamps adopt strong winds to refrigerate, it is easy to accumulate the dust, so you have to clean it weekly especially the cooling air opening, otherwise the dust will plug leading to poor light

2. TECHNOLOGY REFERENCE

Power Supply: DC12.6V

Power consumption: 60W

Light source: 256pcs * 0.25 W RGBW 4in1 LED
32sections, 4pcs 2row per section

Dimmer: 0-100% dimmer

Working Environment: -20°C-40°C

Color temperature:6500K CRI \geq 90

IP rate: IP65,outdoor

DMX Channels:8/36/132channels

Control Mode: DMX512 ,Sound, Auto, Wireless, IR Remote

Battery:

Battery type: Lithium Ion

Battery Charge Time: 6 hours

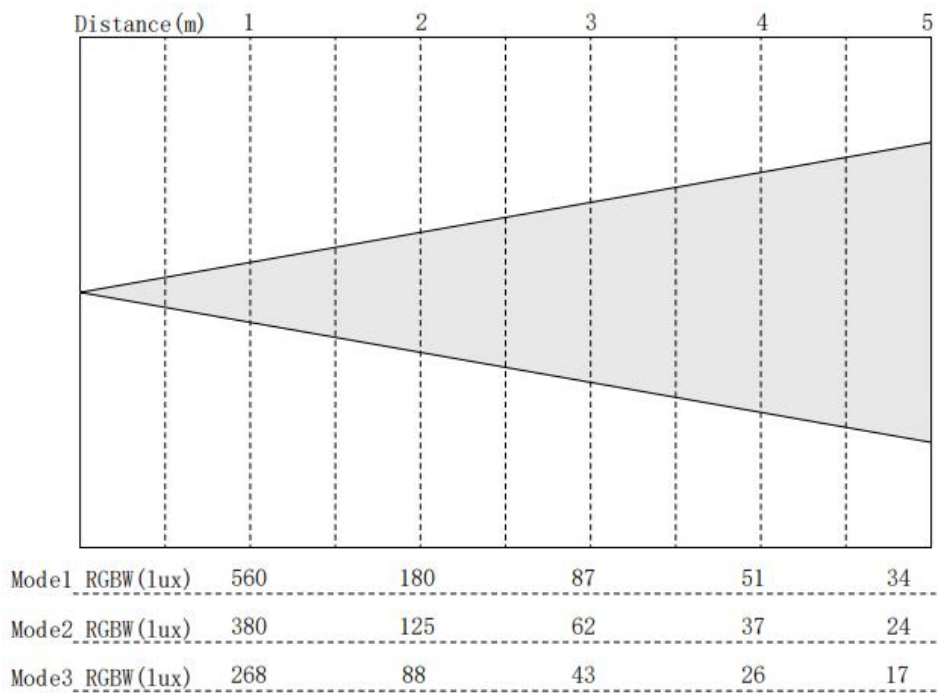
Battery Life: 4/6/8 hours(all on)optional, more than 20hours(single color)

Battery Power: 12.6V, 16000mAh

Wireless effective distance: 200meters

Product size: length 2037mm,diameter59mm

3.Photometric report



Color temperature:6500K,CRI≥90

4. Board Instruction

4.1 Control Panel

Button	Meaning
M	menu
E	enter
▲	up
▼	down

Pls press the <M> buttons about three second can let led tube running.

Pls press the <up> and <down> buttons about six second,and press the<E>button, can let led tube off work.

4.2 Operate menu

※	DMX Addres s	001~512		
※	Mode	DMX	8ch/36ch/132ch	
		Auto	Pro00~Pro20/ Sp00~Sp99	
		Sound	Pro00~Pro20 / Se00~Se99	
		Static	Dimmer	000~255
			Strobe	000~255

			C-Macro	01~12	
			Red	000~255	
			Green	000~255	
			Blue	000~255	
			White	000~255	
			Fade	000~255	
			Jump	000~255	
		Slave			
※	Setting	W-Dmx	Link RDX1		
			Link RDX2		
			Link RDX3		
			Link RDX4		
			Unlink RDX		
		Group	1ch / 2ch / 3ch / 4ch / 5ch / 6ch / 7ch		
		Display	on / off		
		Display Rev	on / off		
		Limiter	on / off		
		Key Lock	on / off		
		Frequency	3K Hz / 22K Hz		
		DMX Fail	Blackout / Sound / Auto / Hold		
※	System Info	Firmware	V1.0		
		Time Info	00H		
		Temperature	00℃/ 32F		
		APP QR Code			

4.3 Ways to control

The light can be controlled in several ways:



Use infrared remote control, point it at individual lights and press the desired effect. Note that the IR sensor is next to the display.



The light can be controlled by DMX512.



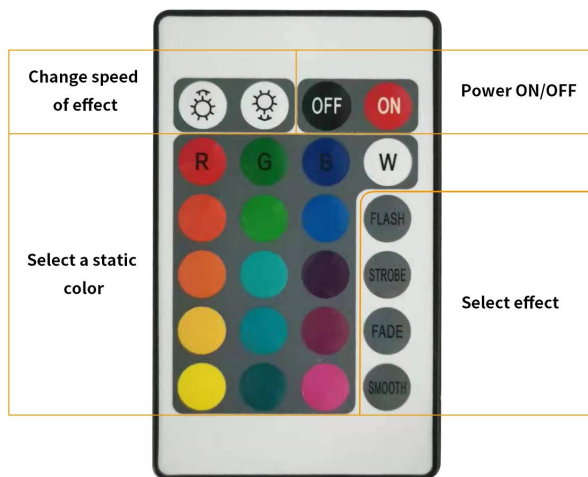
The light can also be controlled by wireless DMX, the built-in receiver. Compatible with the world's major wireless communication protocols. Whether you use Sweden or Guangzhou wireless transceiver, we can be fully compatible with it.

4.4 controlled by infrared

The light can be controlled by the infrared remote :

Firstly choose Auto 、 Sound or Static mode of tube, and then exit interface.

- 1-Press remote ON button,the fixture automatically exits the current mode and enters infrared remote control mode.
- 2-Press any Static color to switch the corresponding color on the remote panel,after determined the color, press STROBE key and then press Speed of Effect key cans witch different strobe frequencies.



- 3-Press FLASH key to switch Auto mode,press FLASH repeatedly to switch to different Auto mode,In addition, press the select and effect speed key to select different Auto speed.
- 4-Pressing STROBE alone will not work and needs to be used with Static color.
- 5-Press FADE will appear color fade,if press speed of effect key can adjust the speed of close fade.
- 6-Press SMOOTH is Sound control mode, press SMOOTH repeatedly can switch different sound mode,and it will be has different Sound mode speed when press speed of effect Key.

4.5 controlled by wired DMX

The fixture itself has 2-3.5MM audio and video sockets,through specialized DMX Cable can be connect with DMX console.

It must be set to DMX mode and Menu(W-DMX--Unlink RDX)

4.6 controlled by wireless DMX

Two mode: Guangzhou and Sweden

3.51 Guangzhou Wireless dmx

The operation method of fixture using Guangzhou wireless dmx as follows:

- Firstly,Set the fixture to DMX Mode
- Secondly Set Menu(W-DMX) to Link RDX4
- Thirdly, on the Menu(GROUP) set any of groups,Groups 1 through 7, the color are red, green, yellow, blue, purple, cyan,and white.
- Through wireless transmitter button stand switch indicator color,make it keep the same color as wireless group.



The above operation can make wireless pairing successful.

3.52 Sweden Wireless

The operation method of fixture using Sweden wireless dmx as follows:

Firstly,Set the fixture to DMX Mode.

Secondly Set Menu(W-DMX) to Link RDX2.

Thirdly Press wireless transmitter key make it paired with fixtures.

The above operation can make wireless pairing successful.

5. DMX CHANNEL SHEET

8CH mode

8-ch	Function	Value
1	ALL-Dimmer	000-255 0%~ 100%
2	Strobe	000-008 Open
		009-255 Stroboscope (Speed 0 - 100%)
3	Red	000- 255 0%~ 100%
4	Green	000- 255 0%~ 100%
5	Blue	000- 255 0%~ 100%
6	White	000- 255 0%~ 100%
7	Color Chase	000- 255
8	Chase speed	000- 255

36CH mode

36-ch	Function	Value
1	ALL-Dimmer	000-255 0%~ 100%
2	Strobe	000-008 Open
		009-255 Stroboscope (Speed 0 - 100%)
3	Group 1	000- 255 0%~ 100%

4	Group 2	000- 255 0%~ 100%
5	Group 3	000- 255 0%~ 100%
...
34	Group 32	000- 255 0%~ 100%
35	Color Chase	000- 255
36	Chase speed	000- 255

132CH mode

1	ALL-Dimmer	000-255 0%~ 100%
2	Strobe	000-008 Open
		009-255 Stroboscope (Speed 0 - 100%)
3	R1	000- 255 0%~ 100%
4	G1	000- 255 0%~ 100%
5	B1	000- 255 0%~ 100%
6	W1	000- 255 0%~ 100%
...
127	R32	000- 255 0%~ 100%
128	G32	000- 255 0%~ 100%
129	B32	000- 255 0%~ 100%
130	W32	000- 255 0%~ 100%
131	Color Chase	000- 255
132	Chase speed	000- 255

6.Package contents

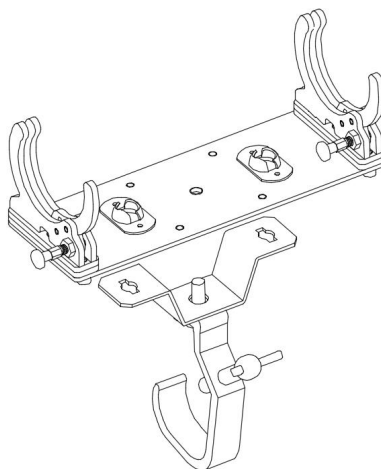
- 1*Tube
- 1*Remote
- 2*Ring
- 1*Tripod
- 2*DMX Cable
- 1*Charge Cable

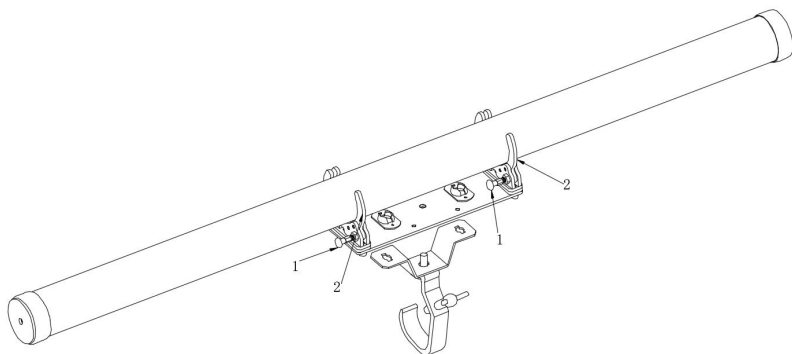
7.Handing

7.1 Mounting Accessories

7.1.1 Wing plate

The wing plate is designed to install and fixed of hook





Picture 1 is the self-locking indexing pin, picture 2 is movable clip, when clamp the tube, Firstly rotate the self-locking indexing pin to the cancel self-locking position, then press the movable clip forced to make the self-locking indexing pin locked movable clip, the wing plate will be clamped the tube.

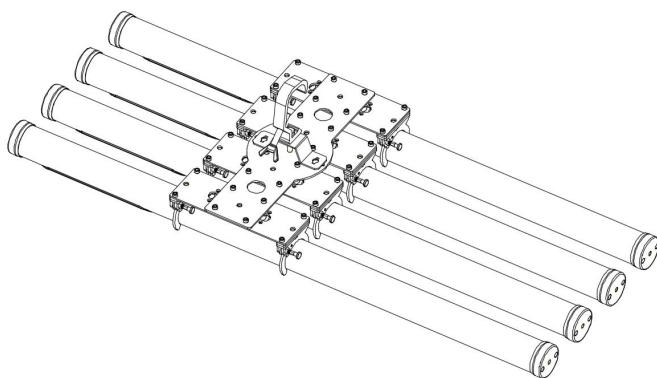
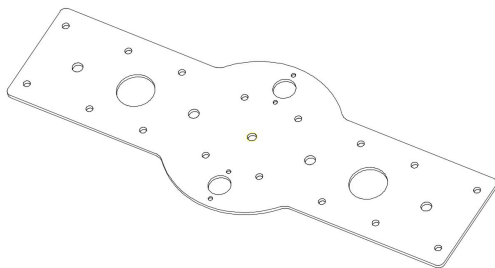
7.1.2 Rings

Rings can be screwed into the M8 Battery Tube



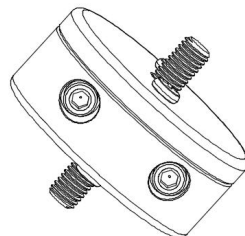
7.1.3 4 in one fixing plate

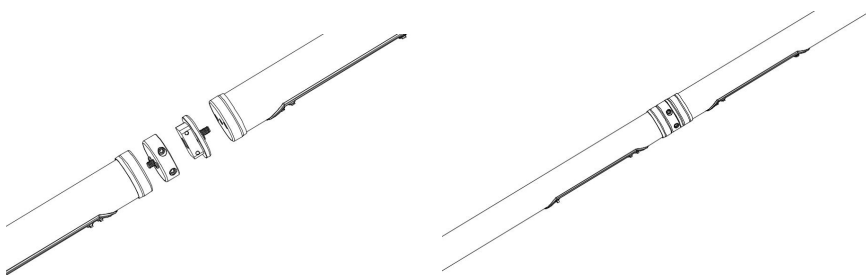
4 in one fixing plate can be connected with wing plate, 4 tubes will be formed and arranged effectively at the same time.



7.1.4 Adapt piece

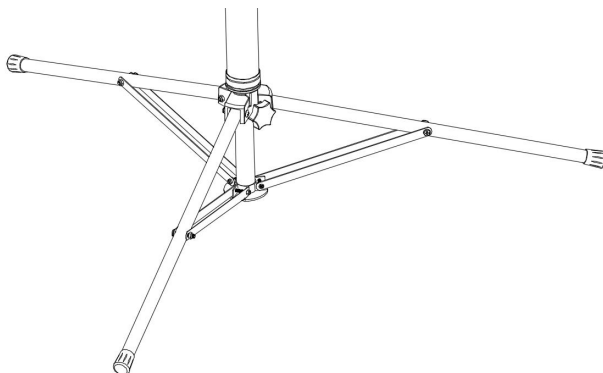
Through Adapt piece can be connected two tubes, combined into a 2-meter tube.





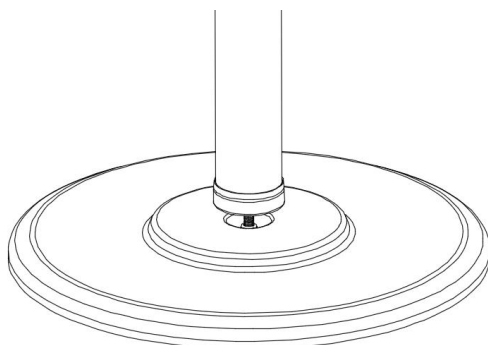
7.1.5 Big tripod

For a quick vertical setup, the big tripod can be screwed onto the tube via one of its M8 threads. The Small big tripod can be folded together for a convenient transportation.



7.1.6 Support base

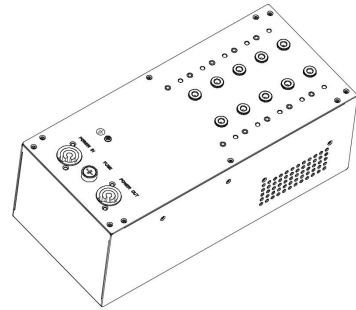
For a quick vertical setup, the support base can be screwed onto



the tube via one of its M8 threads.

7.1.7 Charging box

The charging box can supply 10 tubes at the same time charge



7.2 Battery

While running on battery, The fixture will default to the second level output, It can adjust the maximum brightness (first level) output and the minimum brightness (third level) output through the control panel.

The battery is specified to last for 500 full discharge cycles. Its runtime will have decreased to 70% by then. To increase the battery life, it is recommended to recharge as early as possible and not let the light run until the battery is fully discharged. Please do not put all the power on standby, leave 30% power on standby, and charge once every six months .

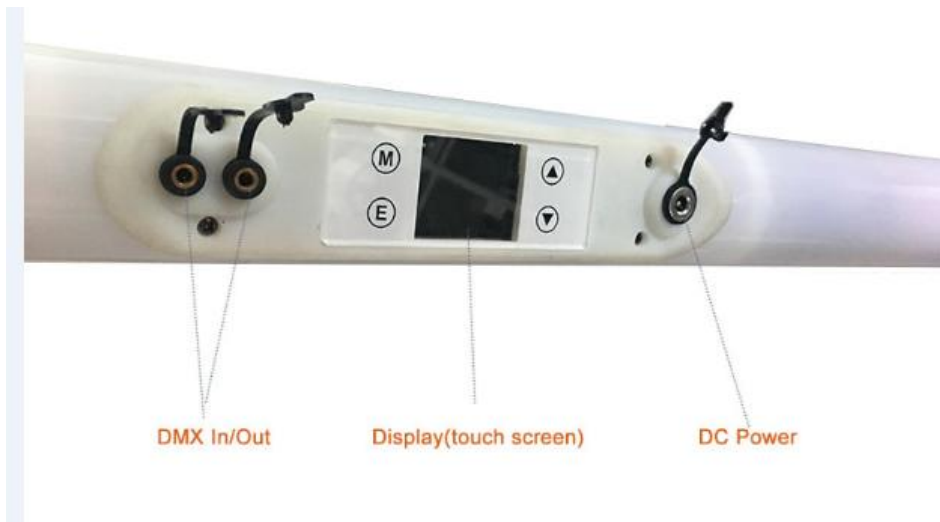
If operated below 20°C, the battery runtime may be slightly shorter than predicted. This is also true if the lights are stored for a long time at cold temperature right before they are used.

The light is constantly monitoring the LED temperature and dims down the brightness if it exceeds 65°C. That ensures a save and long-live operation but in a hot environment the brightness might be slightly lower.

8. FIXED EQUIPMENT

Please fasten the fixture clamp before hanging. The clamp can be fasten by the little hole in the middle of the bracket, then tie with a safety belt. The loading capacity of the safety belt should be 10 times than the weight of the fixture itself.

9. CONNECTION OF DMX-512 AND CONNETION WITH THE LIGHT EQUIPMENT



10. Maintenance

Problems	Check list	Trouble Shooting
The fixture do not work	<ol style="list-style-type: none"> 1. If your power as same as the input of the machine. 2. If the fuse was broken. 	<ol style="list-style-type: none"> 1. Make sure the voltage. 2. Replace the same fuse.
LED dimmed	If your power us same as the input of the machine	Make sure the voltage input.
No DMX input	<ol style="list-style-type: none"> 1. If the polarity is opposited in the DMX controller. 2. If it is in DMX mode. 3. If there are 2 Master in a loop. 	<ol style="list-style-type: none"> 1. Correct the DMX polarity. 2. Change to the DMX mode.

		3. Set one piece into Slave mode.
Par Light Set works abnormality	1. Check if the serial is correct on the Par Light display	1. Set the right serial No on the single Par Light

11. AFTER SERVICE

1. Our company offer technical consultation to customers for ever.
2. If the machine is wrong and need repairmen, please truthfully fill in the related content and feedback us the problems timely, as well as we have to improve the product.
3. In addition to the lamp, also matching accessories are as follows:
accessories: Power line 1 piece **Optional parts:** (customers)



Warranty Card

Name	Model
------	-------

Production	Purchase
------------	----------

End User
Company Name:
Add:

Sale Store	
Link man:	
Tel:	Stamp

Description: These must be truthfully fill, seal by the end-user and point-of-sale, or else the warranty will not work (warranty period and terms, see the following)

warranty period: one year since purchase warranty terms: 1、 If fail when using the product in normal state, you can made under the provisions of the warranty, show the warranty card and purchase bills(copy), and enjoy free maintenance service in a specific service center or the manufacturer.

2. The following will be the implementation of paid service:

- (1)Without the effective warranty card
- (2)There's blank, alter and no point-of-sale name
- (3)Fail caused by unresistance
- (4)Fail caused by transportation or unloading
- (5)Fail caused by not operate by manual
- (6)Fail caused by disassemble without unauthorized
- (7)Fail caused by using the unauthorized control system

Note:

Based on our company continue to improve the product, the statement containing data may have changed, and will not notice the change any more. Company retains its right to change specifications related when product is improved. Thanks for your understanding.