

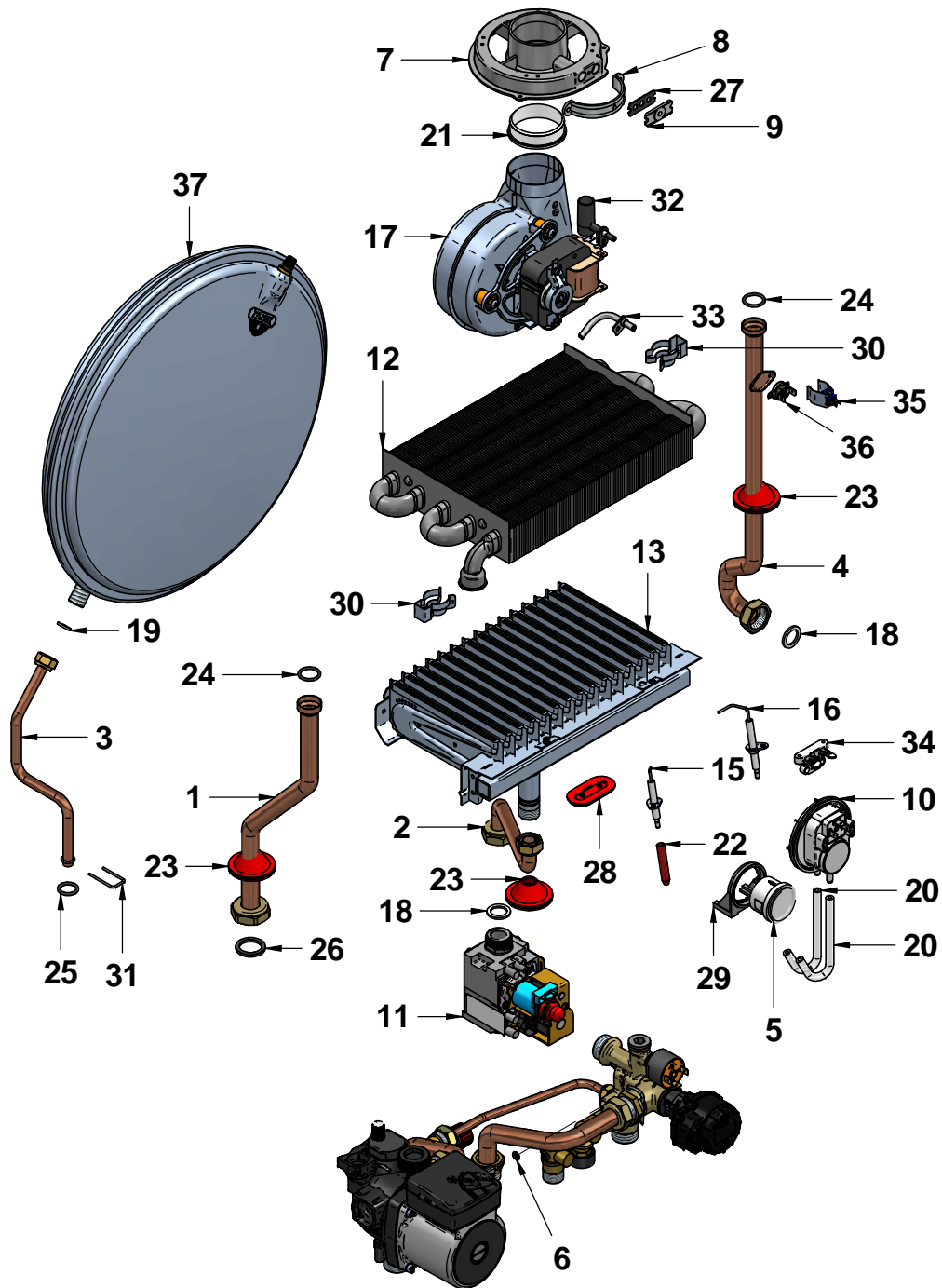
N°	Code	Description	Qty
1	12-02772	FLUE HOOD	1
2	15-00804	CYLINDER PIPES SUPPORT BRACKET	1
3	15-00843	ROOM-SEALED CHAMBER BOTTOM LEFT DEFLECTOR	1
4	15-00844	ROOM-SEALED CHAMBER BOTTOM RIGHT DEFLECTOR	1
5	15-00962	COMBUSTION CHAMBER BACK SIDE PANEL	1
6	15-01240	CONTROL PANEL LEFT SIDE BRACKET - RSR24/RBS24 R5	1
7	15-01241	CONTROL PANEL RIGHT SIDE BRACKET	1
8	15-02055	COMBUSTION CHAMBER LEFT SIDE PANEL	1
9	15-02056	COMBUSTION CHAMBER RIGHT SIDE PANEL	1
10	15-02057	COMBUSTION CHAMBER FRONT PANEL	1
11	15-02059	ROOM-SEALED CHAMBER TOP	1
12	15-02071	EXHAUST FAN FLANGE	1
13	15-02077	ROOM-SEALED CHAMBER BOTTOM PLATE	1
14	15-02080	BOTTOM BOILER PLATE	1
15	30-00025	CERAMIC FIBRE DX/SX	2
16	33934LP	FRAME/EXP. VESSEL FIXING BRACKET M24	1
17	35-00156	CASING FRONT PANEL	1
18	43210LA	CERAMIC FIBRE BACK PANELM24 210x260x10tk	1
19	43212LA	RIGHT/LEFT PANEL INSULATION	2
20	43213LA	ALUMINIUM ADHESIVE RIGHT/LEFTSIDE PANEL 300X220	2
21	43283LA	INSULATION FRONT PANEL M24395x520x10sp	1
22	43344LA	CERAMIC FIBRE FRONT PANELM24 - 210x260x7,5tk	1
23	52271LA	CASING RIGHT SIDE PANELRBS M24 10/06	1
24	52272LA	CASING LEFT SIDE PANELRBS M24 - 10/06	1
25	62011LP	HOLES CLOSING PLATE Ø100	1
26	74266LP	CASING WALL HANGING BRACKETM24-RK25/34OV	1
27	74503LP	WALL MOUNTING BRACKETM24	1
28	79040LP	FRAME M24	1

Disegnatore	Rev.	data revisione	Autore revisione	Descrizione revisione
cristian.pazzaglini				
Modificato				
cristian.pazzaglini				
Data di creazione	Scala	Materiale	Sp.	Peso (Kg)
06/04/2021	16			714,74

Descrizione completa
PREMIUM 32B
MET - MIAB2013 - R7 - B3 - VLX



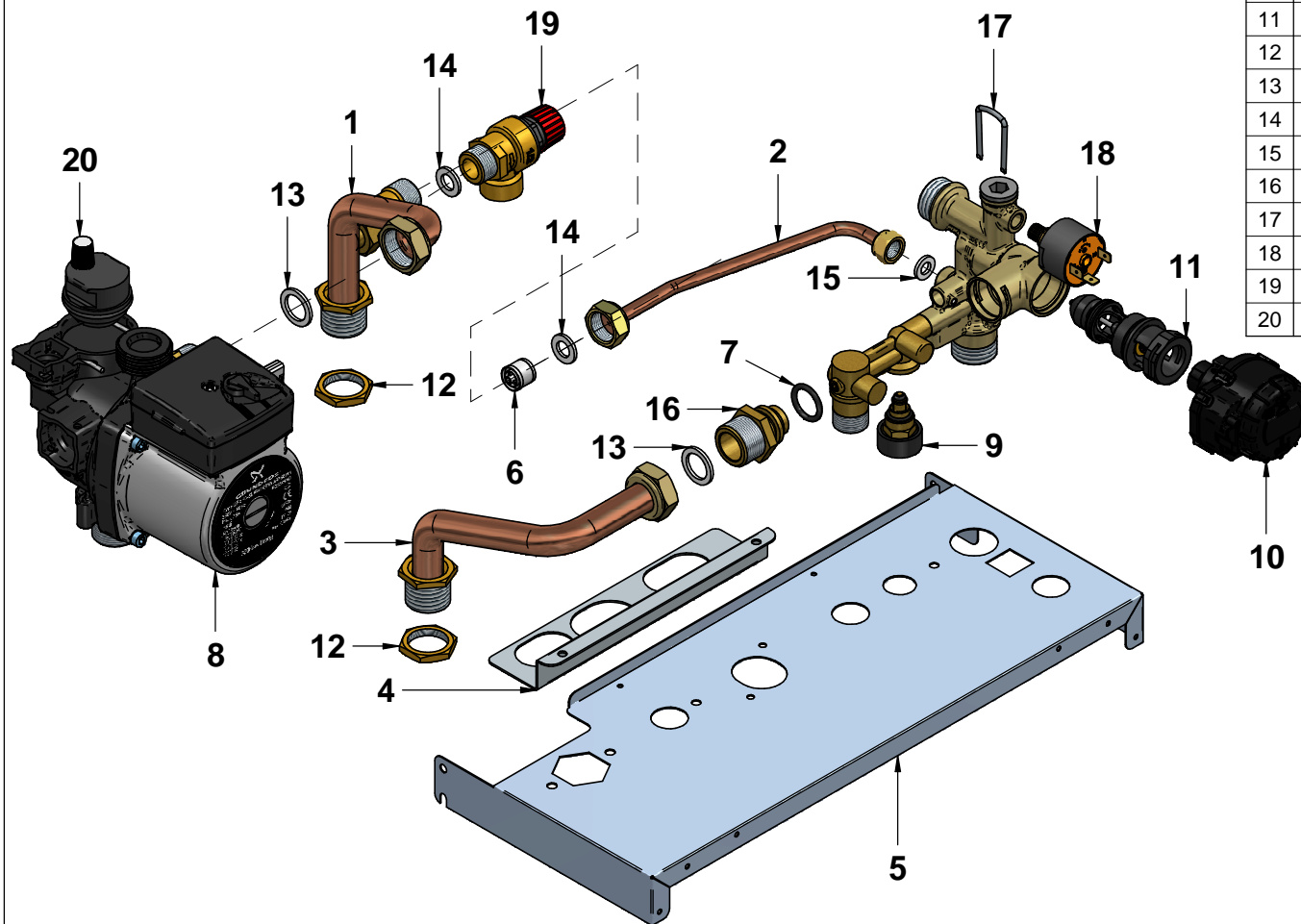
Codice G231A712P401
 Revisione 00



N°	Code	Description	Qty
1	12-02788	PIPE Ø18 HTG RETURN	1
2	12-02789	PIPE Ø14 GAS	1
3	12-02790	PIPE Ø10 EXPANSION VESSEL	1
4	12-02936	PIPE Ø18 HTG FLOW	1
5	25-00363	WATER PRESSURE GAUGE-QUICK CONNECTION	1
6	25-00404	OR 5,00x2 EPDM	1
7	27066LA	FLUE INSPECTION	1
8	27067LA	FIXING CLAMP FLUE INSPECTION	1
9	27068LA	PLATE FOR FLUE INSPECTION CLOSURE	1
10	30-00023	AIR PRESSURE SWITCH 2.14-1.96	1
11	30-00035	SIT GAS VALVE 845 113 230V	1
12	30-00415	HEAT EXCHANGER	1
13	30-00417	BURNER 15R - 1.20 NAT.GAS	1
14	31333LA	IGNITION ELECTRODE EARTH CABLE	1
15	35007LA	IGNITION ELECTRODE E. 0774527	1
16	35009LA	IONISATION ELECTRODE EL.0774929	1
17	37029LA	EXHAUST FAN 230 ES30-98 FIME	1
18	43001LA	WASHER Ø 23.5x17x2 3/4" -AFM34	2
19	43003LA	WASHER Ø15x8x2 3/8" -AFM34	1
20	43018LA	SYLICON/TRANSPARENT PIPE Ø8x4	2
21	43031LA	EXHAUST FAN D.54 RUBBER COLLAR	1
22	43040LA	ELECTRODE RED RUBBER CAP 0619/36	1
23	43047LA	GAS VALVE WHITE WASHER - CONETYPE M24 - 99100016	3
24	43118LA	MAIN HEAT EXCHANGER O-RING	2
25	43150LA	EPDM O-RING 14X30 FOR BRASS CONNECTIONS M.PLEX	1
26	43208LA	WASHER 23x30x3sp EPDM 80sh 1"	1
27	43220LA	RUBBER WASHER EPDM FLUE INSPECTION	1
28	43352LA	FB12/1 SYLICON RED WASHER-OVAL	1
29	45-00084	WATER PRESSURE GAUGE FIXING PLATE	1
30	54020LA	DUAL CIRC. EXCHANGER FIXING CLIP	2
31	55-00227	EXPANSION VESSEL PIPE FIXING CLIP	1
32	57525LA	VENTURI NEGATIVE PRESSURE POINT 2008	1
33	57526LP	PRESSURE POINT MINI 24 FIME	1
34	59023LA	AIR PRESS.SWITCH FIXING CLIP - PLASTIC	1
35	73516LA	HTG CLIP SENSOR X PIPE 17/18mm BLUE	1
36	86006LA	SAFETY THERMOSTAT 95gr(ø)E.	1
37	95014LA	EXPANSION VESSEL LT.6 3/8" - MIDY - 13C0000600	1

Disegnatore	Rev.	data revisione	Autore revisione	Descrizione revisione
cristian.pazzagliani				
Modificato				
cristian.pazzagliani				
Data di creazione	Scala	Materiale	Sp.	Peso (Kg)
06/04/2021	15			714.74
Note				
Descrizione completa PREMIUM 32B MET - MIAB2013 - R7 - B3 - VLX				
Codice				Revisione
G231A712P401				00

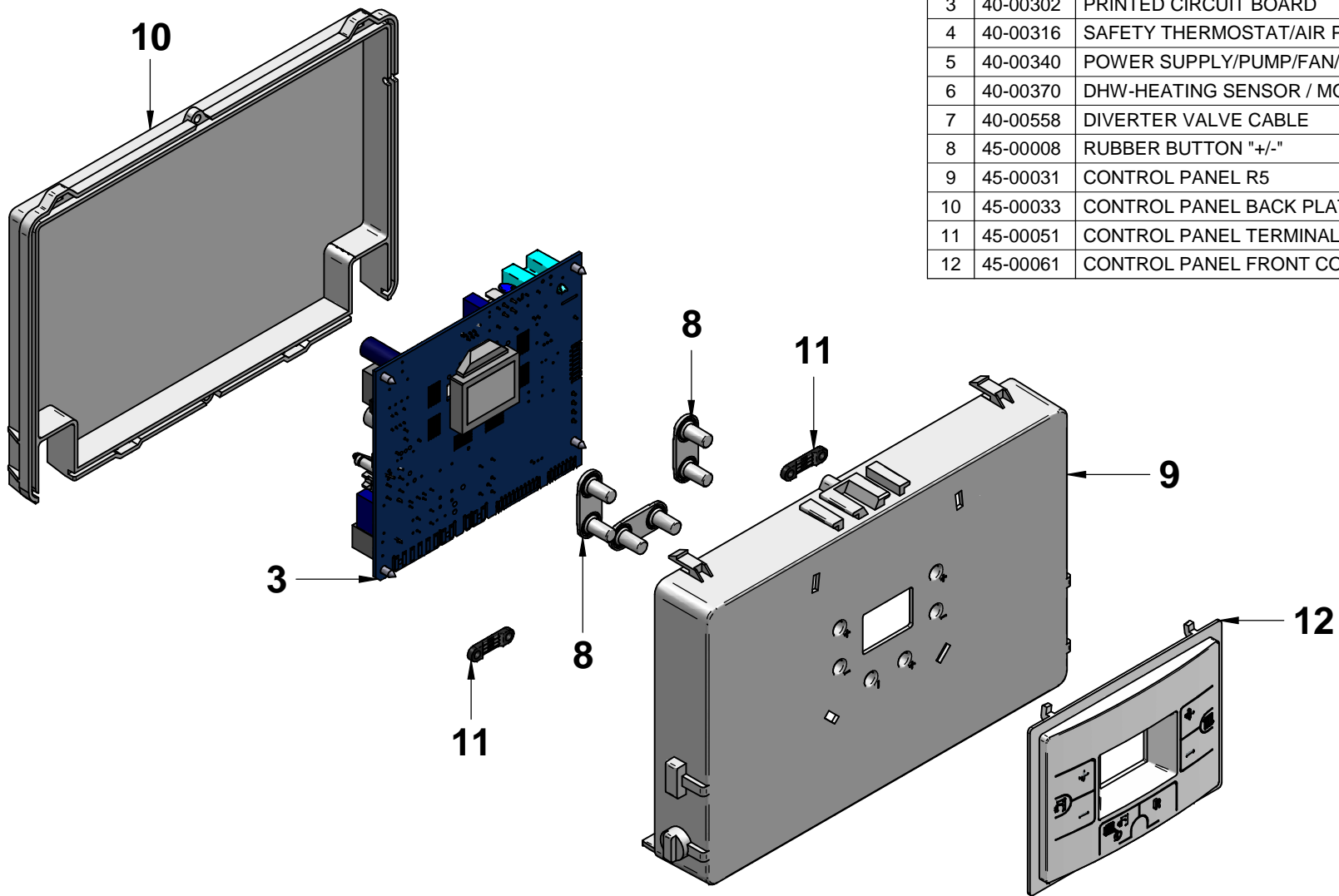




N°	Code	Description	Qty
1	12-02819	PIPE Ø18 HTG RETURN CYLINDER	1
2	12-02820	PIPE Ø8 BY-PASS	1
3	12-02874	PIPE Ø18 CYLINDER FLOW	1
4	15-00804	CYLINDER PIPES SUPPORT BRACKET	1
5	15-02080	BOTTOM BOILER PLATE	1
6	25-00256	BY-PASS D.15	1
7	25-00269	PUMP/PUMP CONNECTION BODY OR 18,64x3,53 EPDM	1
8	25-00299	PUMP AOKR GRUNDFOS UPSO15-60	1
9	25-00491	FILLING TAP	1
10	25-00800	3-WAY VALVE ACTUATOR ELBI 230V	1
11	25-00844	3-WAY VALVE SHUTTER	1
12	34002LA	BRASS BACKNUT 3/4" E.30x5	2
13	43001LA	WASHER Ø 23.5x17x2 3/4" -AFM34	2
14	43002LA	WASHER Ø 18.5x10.2x2 1/2" -AFM34	2
15	43003LA	WASHER Ø15x8x2 3/8" -AFM34	1
16	55-00191	NIPPLES 3/4" w/O-RING	1
17	55-00215	FIXING CLIP - STAINLESS STEEL	1
18	59015LA	WATER PRESSURE SWITCH PC5411 BRASS-54118N9000,2	1
19	96005LA	SAFETY VALVE 1/2" 3 bar	1
20	96030LA	SHUL AUTOMATIC AIR VENT VALVE 3/8"	1

Disegnatore	Rev.	data revisione	Autore revisione	Descrizione revisione
crislian.pazzaglini				
Modificato				
crislian.pazzaglini				
Data di creazione	Scala	Materiale	Sp.	Peso (Kg)
06/04/2021	13			3.289
Note				
Descrizione completa HYDRAULIC GROUP RS 32/B VLX - B3				
Codice				Revisione
26-00684				00





N°	Code	Description	Qty
1	40-00107	FRAME-PRINTED CIRCUIT BOARD CABLE	1
2	40-00299	LINK JUMPER CABLE	1
3	40-00302	PRINTED CIRCUIT BOARD	1
4	40-00316	SAFETY THERMOSTAT/AIR PRESS./WATER PRESS. SWITCH CABLE	1
5	40-00340	POWER SUPPLY/PUMP/FAN/GAS VALVE CABLE	1
6	40-00370	DHW-HEATING SENSOR / MODULATOR CABLE	1
7	40-00558	DIVERTER VALVE CABLE	1
8	45-00008	RUBBER BUTTON "+/-"	3
9	45-00031	CONTROL PANEL R5	1
10	45-00033	CONTROL PANEL BACK PLATE	1
11	45-00051	CONTROL PANEL TERMINAL FIXING CLAMP - R5	2
12	45-00061	CONTROL PANEL FRONT COVER	1

Disegnatore	Rev.	data revisione	Autore revisione	Descrizione revisione
cristian.pazzaglini				
Modificato				
cristian.pazzaglini				
Data di creazione	Scala	Materiale	Sp.	Peso (Kg)
06/04/2021	12			342
Note				
Descrizione completa CONTROL PANEL COMPLETE RS 28+32/B VLX - R7 BIANCO - B3				
Codice				Revisione
41-00422				00

