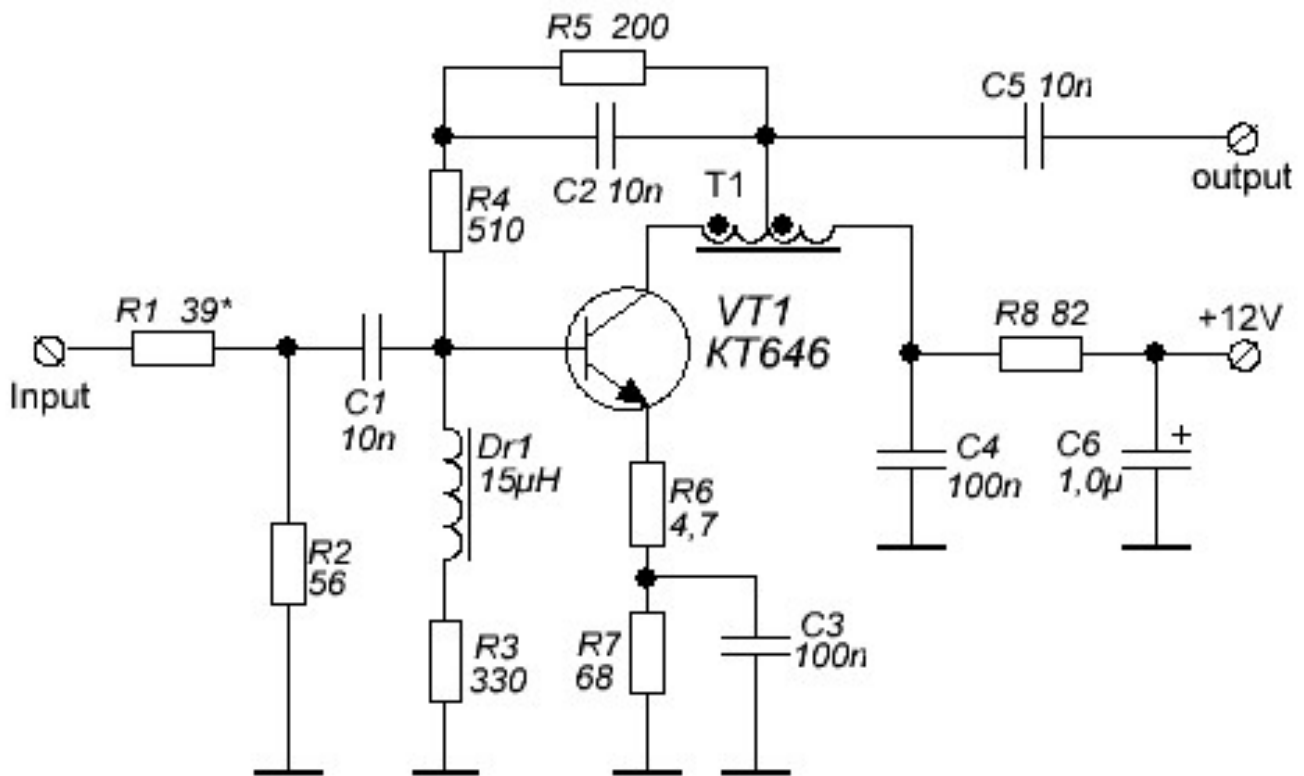
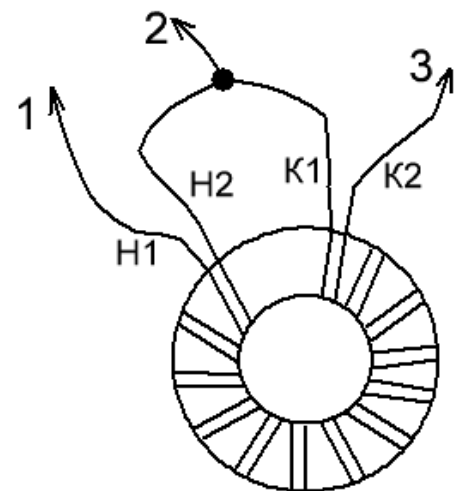
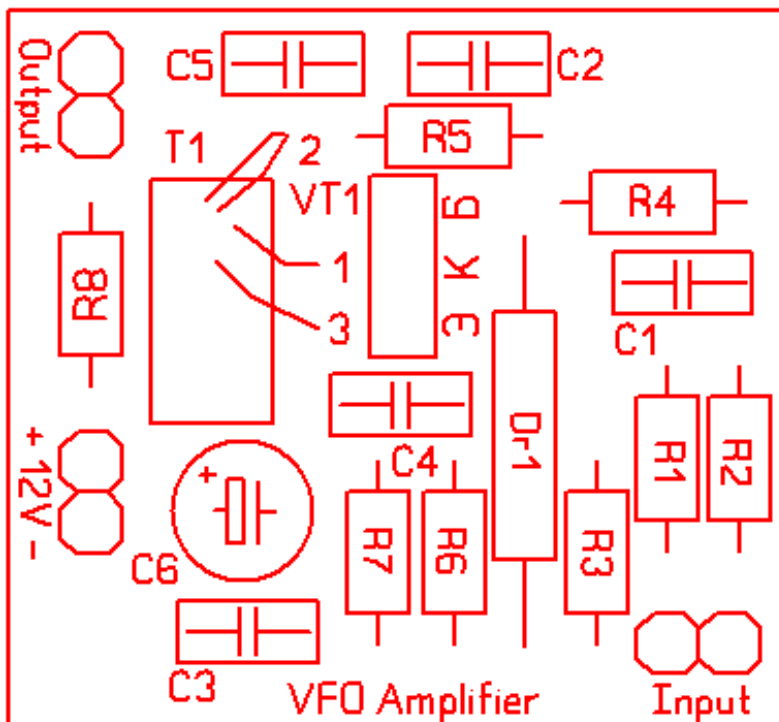


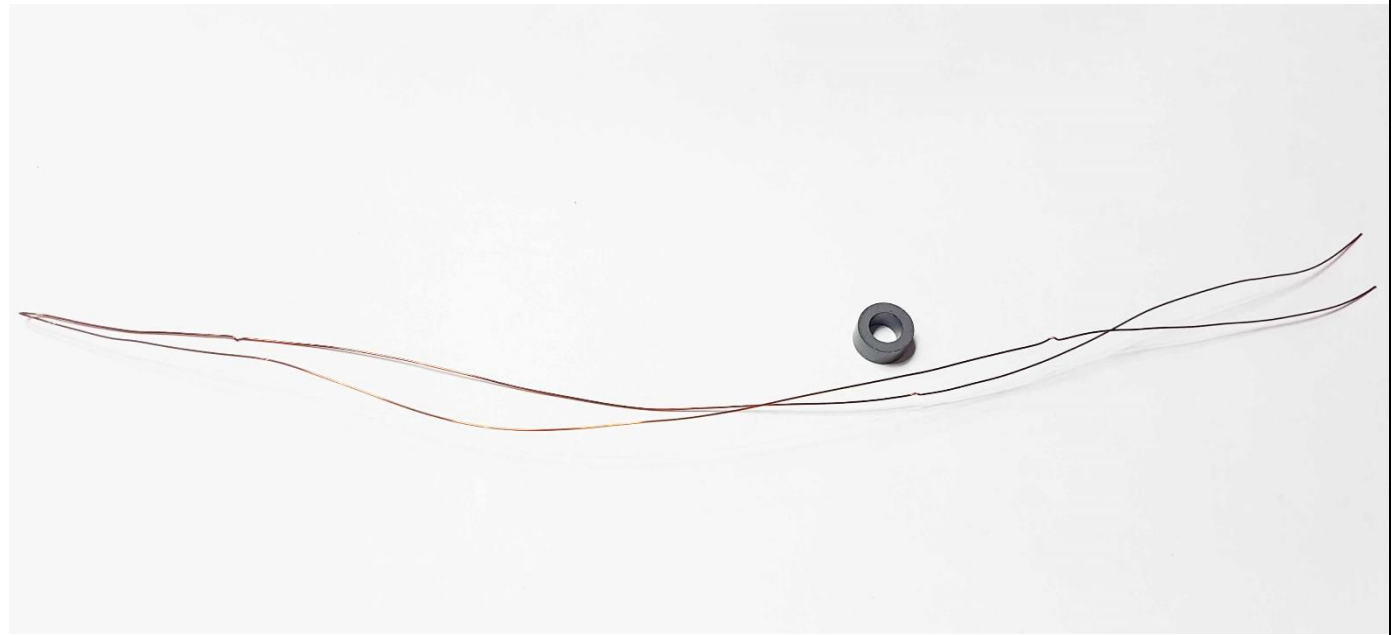
VFO amplifier



Transformer T1 assembled on toroid 10x6x5. Wire: 0.35 mm, 5 turns by two twisted wires. The end of the first wire should be connected to the beginning of the second wire (pin 2).



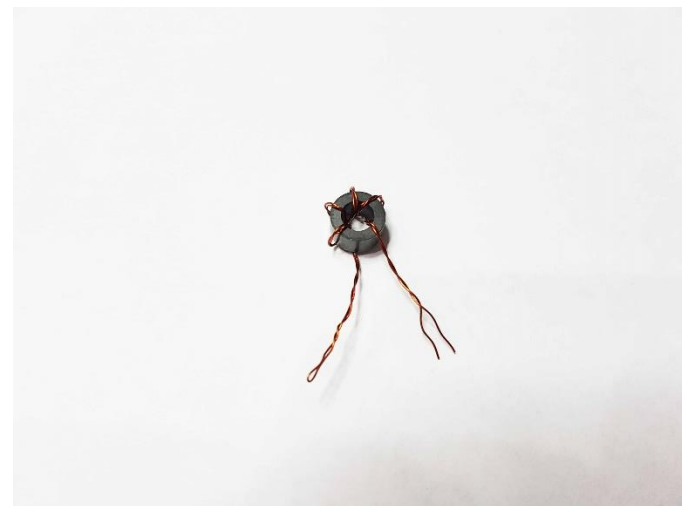
Step 1. Take the toroid and piece of wire (50cm). Fold the wire in half as shown



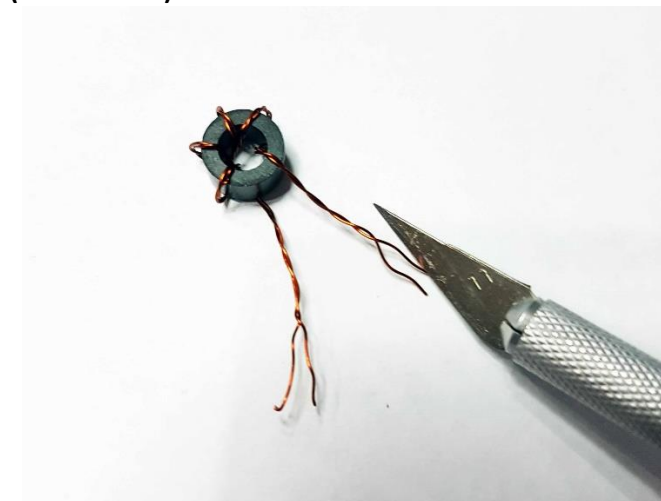
Step 2. Make a wire twisted. Easy to do it my drill.



Step 3. Make wiring (5 turns)



Step 4. Cut the isolation from the ends of the wire. Find the ends of wire 1 and wire by using diode tester (multi-tester)



Step 5. The end of the first wire should be connected to the beginning of the second wire (see illustration on page 1).

