

P712E SMARTPAR 712E



ADD F1-5, Block 3, No.95, Guangzhu Rd, Lanhe Town, Nansha District, Guangzhou 511480

Tel. +86 20 8499 2310/2320/2330

Fax +86 20 8499 2360

E-mail info@color-imagination.com

Website www.color-imagination.com

**Follow
us on**



www.facebook.com/colorimagination.1



www.youtube.com/user/colorimaginationj



https://twitter.com/Color_lighting

CE   IP20 t_a 40°C t_c 100°C

User Manual

KEEP THIS MANUAL FOR FUTURE NEEDS

1 SAFETY INSTRUCTIONS



CAUTION

Becareful with your operations. With a dangerous voltage you can suffer a dangerous electric shock when touching wires!

This device has left the factory in perfect condition. In order to maintain this condition and to ensure a safe operation, it is absolutely necessary for the user to follow the safety instructions and warning notes written in this user manual.



IMPORTANT

Damages caused by the disregard of this user manual are not subject to warranty. The dealer will not accept liability for any resulting defects or problems.

If the device has been exposed to temperature changes due to environmental changes, do not switch it on immediately. The arising condensation could damage the device. Leave the device switched off until it has reached room temperature.

This device falls under protection-class I. Therefore it is essential that the device be earthed.

The electric connection must be carried out by a qualified person.

The device shall only be used with rated voltage and frequency.

Make sure that the available voltage is not higher than stated at the end of this manual.

Make sure the power cord is never crimped or damaged by sharp edges. If this would be the case, replacement of the cable must be done by an authorized dealer.

Always disconnect from the mains, when the device is not in use or before cleaning it. Only handle the power cord by the plug. Never pull out the plug by tugging the power cord.

During initial start-up some smoke or smell may arise. This is a normal process and does not necessarily mean that the device is defective, it should decrease gradually.

Please don't project the beam onto combustible substances.

Fixtures cannot be installed on combustible substances, keep more than 50cm distance with wall for smooth air flow, so there should be no shelter for fans and ventilation for heat radiation.

If the external flexible cable or cord of this luminaire is damaged, it shall be exclusively replaced by the manufacturer or his service agent or a similar qualified person in order to avoid a hazard.

7 MAINTENANCE AND CLEANING

The following points have to be considered during the inspection:

- 1) All screws for installing the devices or parts of the device have to be tightly connected and must not be corroded.
- 2) There must not be any deformations on the housing, color lenses, fixations and installation spots (ceiling, suspension, trussing).
- 3) Mechanically moved parts must not show any traces of wearing and must not rotate with unbalances.
- 4) The electric power supply cables must not show any damage, material fatigue or sediments.

Further instructions depending on the installation spot and usage have to be adhered by a skilled installer and any safety problems have to be removed.



CAUTION

Disconnect from mains before starting maintenance operation.



In order to make the lights in good condition and extend the life time, we suggest a regular cleaning to the lights.

- 1) Clean the inside and outside lens each week to avoid the weakness of the lights due to accumulation of dust.
- 2) Clean the fan each week.
- 3) A detailed electric check by approved electrical engineer each three month, make sure that the circuit contacts are in good condition, prevent the poor contact of circuit from overheating.

We recommend a frequent cleaning of the device. Please use a moist, lint- free cloth. Never use alcohol or solvents.

There are no serviceable parts inside the device. Please refer to the instructions under "Installation instructions".

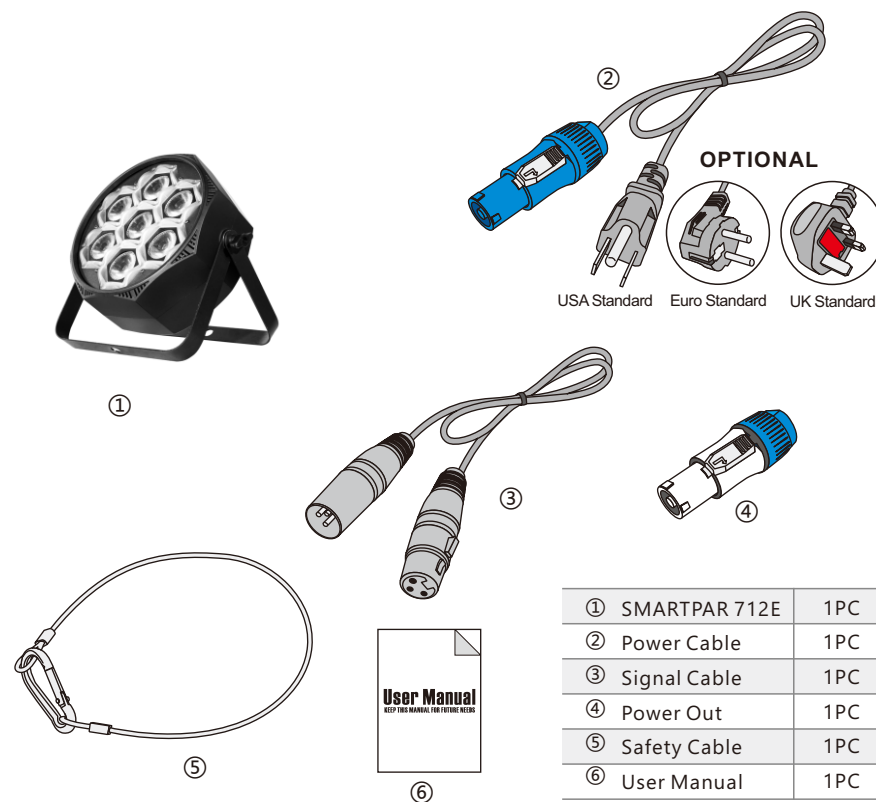
Should you need any spare parts, please order genuine parts from your local dealer.

2 UNPACKING

The SMARTPAR 712E is a high power indoor LED flat par light with auxiliary effects using 7*12W 4-IN-1 RGBW LEDs+60*0.2W 3-IN-1 RGB LEDs. It's available for 2800K-5600K color temperature adjustment.

It features excellent color mixing, quiet running and flicker free control. The fixture is built in with internal dynamic effects with variable speed. The PAR also features optimum optic design integrated with extremely effective aluminum heat sink system.

The SMARTPAR 712E is designed for applications as concerts, TV studios, conference halls, bars, pubs, DJ entertainment, etc.



①	SMARTPAR 712E	1PC
②	Power Cable	1PC
③	Signal Cable	1PC
④	Power Out	1PC
⑤	Safety Cable	1PC
⑥	User Manual	1PC

3 FEATURES & SPECIFICATIONS

7*12W 4-IN-1 LEDs (RGBW)

60*0.2W 3-IN-1 LEDs (RGB)

Flicker free operation for broadcast TV and FILM

Life Span: 50000H

High efficiency optic system

25°Beam angle (other angles optional)

35°Field angle

High output

RGBW for main light

Smooth and pure color mixing capability

CTO, 2800K-5600K color temperature adjustment

RGB for auxiliary light

Background colors adjustable for auxiliary light

Different built-in dynamic effect with variable speed

Different preset colors

0-25Hz LED shutter/strobe effect with variable speed

0-100% Smooth linear LED dimming

7/8/10/18/184 DMX channels USITT DMX-512

DMX512, master-slave, sound or auto operation

DMX recorder and edit function integrated

IR Remote control

RDM available (Remote Device Management)

Wireless system as optional

Shielded input signal protection for stable signal without interference

3-pin XLR connectors IN/OUT

Electronic supply with active PFC

AC100-240V 50/60Hz

PowerCON connectors IN&OUT

100W Power consumption

-25°C to 45°C ambient temperature

IP20 protection rating

N.W.: 2.2kg

G.W.: 3.01kg(1PCS)/13.04kg(4PCS)

Product Dimensions: 101(D)*258(W)*264.5(H)mm

Packing Dimensions: 290(D)*310(W)*170(H)mm(1PCS)

325(D)*615(W)*375(H)mm(4PCS)

18CH Mode

CH	DMX Value	Function
CH1	0-255	Tuned light (0-1 Off, 2-255 Dimmer from Dim to Bright)
CH2	0-255	The main stroboscopic (0-1 Off, 2-255 Dimmer from Dim to Bright)
CH3	0-255	The main RED dimmer (0-1 Off, 2-255 Dimmer from Dim to Bright)
CH4	0-255	The main GREEN dimmer (0-1 Off, 2-255 Dimmer from Dim to Bright)
CH5	0-255	The main BLUE dimmer (0-1 Off, 2-255 Dimmer from Dim to Bright)
CH6	0-255	The main WHITE dimmer (0-1 Off, 2-255 Dimmer from Dim to Bright)
CH7	0-255	CTO (0-7 Off, 8-255 2800K--5600K)
CH8	0-255	The main Built-in effect (0-1 Off, 2-255 Dimmer from Dim to Bright)
CH9	0-255	The main Effect of speed(0-1 Off, 2-255 Dimmer from Dim to Bright)
CH10	0-255	vice stroboscopic (0-1 Off, 2-255 Dimmer from Dim to Bright)
CH11	0-255	vice RED dimmer (0-1 Off, 2-255 Dimmer from Dim to Bright)
CH12	0-255	vice GREEN dimmer (0-1 Off, 2-255 Dimmer from Dim to Bright)
CH13	0-255	vice BLUE dimmer (0-1 Off, 2-255 Dimmer from Dim to Bright)
CH14	0-255	vice Built-in effect (0-1 Off, 2-255 Dimmer from Dim to Bright)
CH15	0-255	vice Effect of speed(0-1 Off, 2-255 Dimmer from Dim to Bright)
CH16	0-255	vice Auxiliary light RED dimmer (0-1 Off, 2-255 Dimmer from Dim to Bright)
CH17	0-255	vice Auxilliary light GREEN dimmer (0-1 Off, 2-255 Dimmer from Dim to Bright)
CH18	0-255	vice Auxiliary light BLUE dimmer (0-1 Off, 2-255 Dimmer from Dim to Bright)

184CH Mode

CH	DMX Value	Function
CH1	0-255	The main RED dimmer (0-1 Off, 2-255 Dimmer from Dim to Bright)
CH2	0-255	The main GREEN dimmer (0-1 Off, 2-255 Dimmer from Dim to Bright)
CH3	0-255	The main BLUE dimmer (0-1 Off, 2-255 Dimmer from Dim to Bright)
CH4	0-255	The main WHITE dimmer (0-1 Off, 2-255 Dimmer from Dim to Bright)
CH5	0-255	Auxiliary light RED dimmer (0-1 Off, 2-255 Dimmer from Dim to Bright)
CH6	0-255	Auxiliary light GREEN dimmer (0-1 Off, 2-255 Dimmer from Dim to
CH7	0-255	Auxiliary light BLUE dimmer (0-1 Off, 2-255 Dimmer from Dim to
CH8	0-255	Auxiliary light RED dimmer (0-1 Off, 2-255 Dimmer from Dim to Bright)
CH9	0-255	Auxiliary light GREEN dimmer (0-1 Off, 2-255 Dimmer from Dim to
CH10	0-255	Auxiliary light BLUE dimmer (0-1 Off, 2-255 Dimmer from Dim to
CH11-CH181
CH182	0-255	Auxiliary light RED dimmer (0-1 Off, 2-255 Dimmer from Dim to Bright)
CH183	0-255	Auxiliary light GREEN dimmer (0-1 Off, 2-255 Dimmer from Dim to
CH184	0-255	Auxiliary light BLUE dimmer (0-1 Off, 2-255 Dimmer from Dim to

6 DMX CHANNELS

7CH Mode

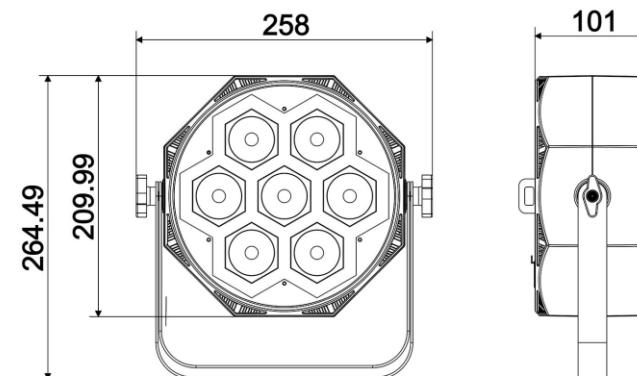
CH	DMX Value	Function
CH1	0-255	The main RED dimmer (0-1 Off, 2-255 Dimmer from Dim to Bright)
CH2	0-255	The main GREEN dimmer (0-1 Off, 2-255 Dimmer from Dim to Bright)
CH3	0-255	The main BLUE dimmer (0-1 Off, 2-255 Dimmer from Dim to Bright)
CH4	0-255	vice RED dimmer (0-1 Off, 2-255 Dimmer from Dim to Bright)
CH5	0-255	vice GREEN dimmer (0-1 Off, 2-255 Dimmer from Dim to Bright)
CH6	0-255	vice BLUE dimmer (0-1 Off, 2-255 Dimmer from Dim to Bright)
CH7	0-255	CTO (0-7 Off, 8-255 2800K--5600K)

8CH Mode

CH	DMX Value	Function
CH1	0-255	The main RED dimmer (0-1 Off, 2-255 Dimmer from Dim to Bright)
CH2	0-255	The main GREEN dimmer (0-1 Off, 2-255 Dimmer from Dim to Bright)
CH3	0-255	The main BLUE dimmer (0-1 Off, 2-255 Dimmer from Dim to Bright)
CH4	0-255	The main WHITE dimmer (0-1 Off, 2-255 Dimmer from Dim to Bright)
CH5	0-255	vice RED dimmer (0-1 Off, 2-255 Dimmer from Dim to Bright)
CH6	0-255	vice GREEN dimmer (0-1 Off, 2-255 Dimmer from Dim to Bright)
CH7	0-255	vice BLUE dimmer (0-1 Off, 2-255 Dimmer from Dim to Bright)
CH8	0-255	CTO (0-7 Off, 8-255 2800K--5600K)

10CH Mode

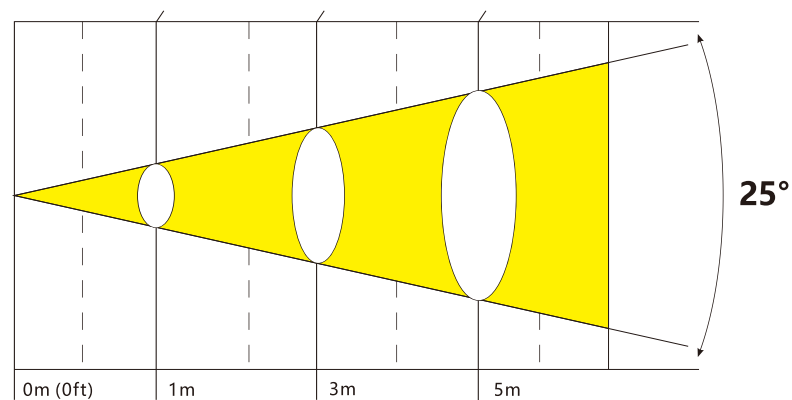
CH	DMX Value	Function
CH1	0-255	Tuned light (0-1 Off, 2-255 Dimmer from Dim to Bright)
CH2	0-255	stroboscopic (0-1 Off, 2-255 Dimmer from Dim to Bright)
CH3	0-255	The main RED dimmer (0-1 Off, 2-255 Dimmer from Dim to Bright)
CH4	0-255	The main GREEN dimmer (0-1 Off, 2-255 Dimmer from Dim to Bright)
CH5	0-255	The main BLUE dimmer (0-1 Off, 2-255 Dimmer from Dim to Bright)
CH6	0-255	The main WHITE dimmer (0-1 Off, 2-255 Dimmer from Dim to Bright)
CH7	0-255	vice RED dimmer (0-1 Off, 2-255 Dimmer from Dim to Bright)
CH8	0-255	vice GREEN dimmer (0-1 Off, 2-255 Dimmer from Dim to Bright)
CH9	0-255	vice BLUE dimmer (0-1 Off, 2-255 Dimmer from Dim to Bright)
CH10	0-255	CTO (0-7 Off, 8-255 2800K--5600K)



4 PHOTOMETRIC DATA

■ Photometric Beam Angle Data 25° Beam Angle LUX × 0.0929=FC

R	1700/157	193/18	74/7
G	6850/636	822/76	317/29
B	353/32	43/4	18/2
W	8380/778	1010/94	383/35
RGBW	15830/1470	1940/180	736/68 (LUX)



5 MENU OPERATIONS

DMX	Address	001-512			
Mode	DMX	7CH			
		8CH			
		10CH			
		19CH			
		184CH			
	Auto	Pro 0-9	SP 00-99		
		Step	SP 00-99		
		Fade	SP 00-99		
		PUSH	SP 00-99		
	Sound	Pro 0-9	SE 00-99		
		Step	SE 00-99		
		Fade	SE 00-99		
		PUSH	SE 00-99		
	MACRO	RED	D 00-99	St 00-99	
		GREEN	D 00-99	St 00-99	
		BLUE	D 00-99	St 00-99	
		CYAN	D 00-99	St 00-99	
		Lemon	D 00-99	St 00-99	
		Amber	D 00-99	St 00-99	
		Lime G	D 00-99	St 00-99	
		Gelb	D 00-99	St 00-99	
		Orange	D 00-99	St 00-99	
		Pale G	D 00-99	St 00-99	
		Pale B	D 00-99	St 00-99	
		Rosa	D 00-99	St 00-99	
		Pink	D 00-99	St 00-99	
		GoldenA	D 00-99	St 00-99	
		Light B	D 00-99	St 00-99	
		2800K	D 00-99	St 00-99	
		3000K	D 00-99	St 00-99	
		4000K	D 00-99	St 00-99	
		5600K	D 00-99	St 00-99	
	Custom A--D	A	B	C	D
		Dimmer	Dimmer	Dimmer	Dimmer
		Strobe	Strobe	Strobe	Strobe
		Red	Red	Red	Red
		Green	Green	Green	Green
		Blue	Blue	Blue	Blue

Wireless Settings	Operation	Receive			
		Transmit			
		Off			
	W-ID Code	1 ID ~ 7 ID			
System Settings	Display	On/Off			
	Display Reverse	On/Off			
	Key Lock	On/Off			
	Ir Remote	On/Off			
	Emergency	No/Yes			
	DMX Fail	Blackout			
		Hold			
		Master			
	Reset Reload				
System Info	Firmware	Ver 1.0			
	Time Info	xxxxH			
	Temperature	xxx℃			