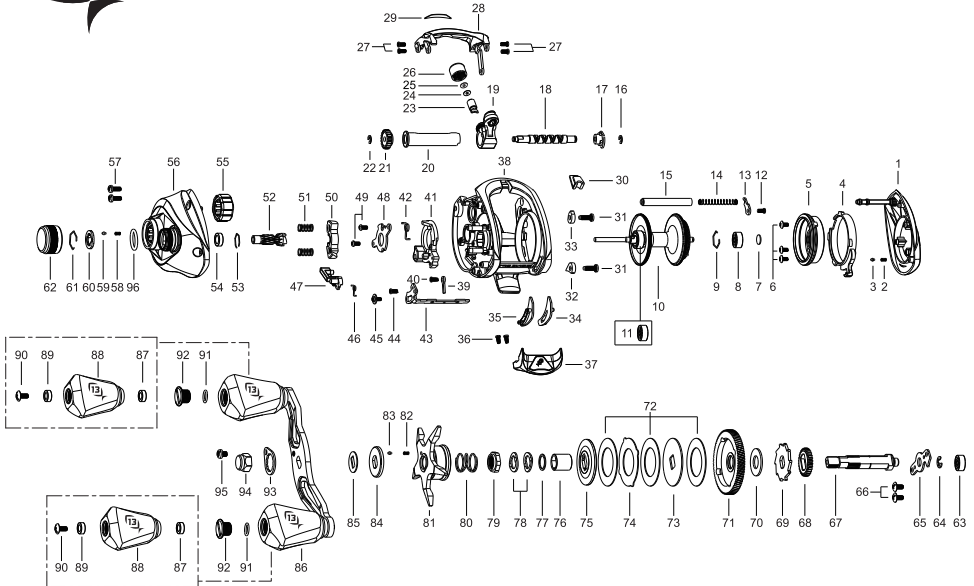




CONCEPT \approx 7.5:1 LH



Key No.	Part No.	Part Name	Key No.	Part No.	Part Name
1	5K479608	PALM SIDE COVER	56	5K479109	GEAR SIDE COVER ASSEMBLY LH 7.5:1
2	5K274701	COIL SPRING	57	6K311314	SCREW
3	6K979701	PIN	58	5K201601	COIL SPRING
4	5K479701	LOCK LEVER	59	5K201501	CLICK PIN
5	5K475501	SPOOL COVER ASSEMBLY	60	5K460801	CLICK PLATE
6	5K047003	TAP SCREW	61	6K394501	RETAINER
7	6K164605	WASHER	62	TS3-4-A2	CAST CONTROL CAP
8	6K474508	CR BALL BEARING	63	6K170601	SS BALL BEARING
9	6K468301	RING	64	63201402	RETAINER
10	TS1-4-A2	SPOOL ASSEMBLY (CR BEARING 6-WAY LF BRAKE)	65	5K134901	BEARING PLATE
11	5K126107	CR BALL BEARING	66	6K398609	SCREW
12	5K047705	SCREW	67	5K251705	GEAR METAL
13	5K314601	PLATE	68	6K258101	GEAR
14	5K314501	COIL SPRING	69	6K893602	RATCHET
15	5K314401	PILLAR POST	70	5K027101	WASHER
16	6B339801	RETAINER	71	5K473804	H.A.M. BRASS DRIVE GEAR 7.5:1
17	6K459601	BUSH	72	5K268401	DRAG DISC-A
18	5K095606	WORM SHAFT	73	5K268501	DRAG D WASHER
19	5K315502	LEVEL WIND ASSEMBLY	74	5K268302	DRAG KEY WASHER
20	6K456403	PIPE	75	5K446701	DRAG WASHER
21	6K469301	WORM PINION	76	6K896723	SLEEVE
22	6B339801	RETAINER	77	6K177302	WASHER
23	6K256501	LEVEL WIND PIN	78	6K160702	SPRING WASHER
24	6K148802	WASHER	79	5K252102	DRAG NUT
25	6K148804	WASHER	80	5K255201	COIL SPRING
26	TSS-17	LINE GUIDE CAP	81	TS2-4-A2	STAR DRAG ASSEMBLY
27	6K047705	SCREW	82	5K274701	COIL SPRING
28	5K479001	FRONT SUPPORT	83	5K201501	CLICK PIN
29	5K487302	NAME PLATE	84	5K252601	CLICK PLATE
30	5K476501	HOOK KEEPER	85	5K232001	WASHER
31	6K784004	TAP SCREW	86	TS4-4-G LH	HANDLE ASSEMBLY
32	5K480001	SCREW PLATE-A	87	5K440801	BUSH
33	5K480101	SCREW PLATE-B	88	TS9-C2	HANDLE KNOB ASSEMBLY (SET OF 2)
34	5K472301	PAD-A	89	6K626401	SS BALL BEARING
35	5K472401	PAD-B	90	63511816	SCREW
36	6K429901	SCREW	91	5K398901	O-RING
37	5K472506	THUMB BAR ASSEMBLY	92	TS8-4	HANDLE KNOB CAP (SET OF 2)
38	5K478304	FRAME	93	TS7-17	HANDLE NUT LOCK
39	5K475201	KICK LEVER PLATE	94	TS6-17	HANDLE NUT
40	5K047705	SCREW	95	63520415	SCREW
41	5K479501	CLUTCH CAM	96	6K904901	O-RING
42	5K138401	SPRING			
43	5K478801	CLUTCH LINK			
44	6K963102	TAP SCREW			
45	5K058802	SCREW			
46	5K133301	SPRING			
47	5K312301	KICK LEVER			
48	5K473001	CAM PLATE			
49	6K961802	SCREW			
50	5K133401	CLUTCH			
51	5K382101	COIL SPRING			
52	5K473402	PINION			
53	6K170701	RING			
54	6K304004	CR BALL BEARING			
55	5K073302	ONE WAY CLUTCH			

CONCEPT \approx 5.6:1 LH

- 52 5K473202 PINION LH 5.6:1
- 56 5K479110 GEAR SIDE COVER ASSEMBLY LH 5.6:1
- 71 5K473604 H.A.M BRASS DRIVE GEAR 5.6:1

CONCEPT \approx 6.8:1 LH

- 52 5K473302 PINION LH 6.8:1
- 56 5K479111 GEAR SIDE COVER ASSEMBLY LH 6.8:1
- 71 5K473704 H.A.M BRASS DRIVE GEAR 6.8:1

CONCEPT \approx 8.3:1 LH

- 52 5K473502 PINION LH 8.3:1
- 56 5K479112 GEAR SIDE COVER ASSEMBLY LH 8.3:1
- 71 5K479304 H.A.M BRASS DRIVE GEAR 8.3:1

