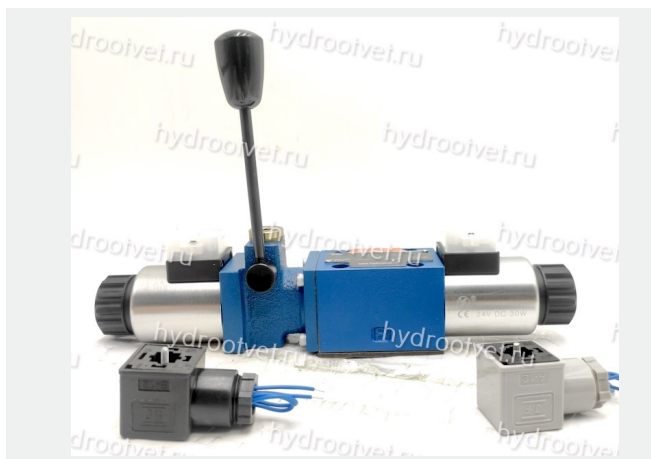


Solenoid Operated Directional Valve with Emergency Handle

Model: 4WEMM6(10).../...



ГИДРООТВЕТ
доступная гидравлика

- ◆ Size 6 to 10
- ◆ Maximum working pressure 350 bar
- ◆ Maximum working flow rate 120 L/min

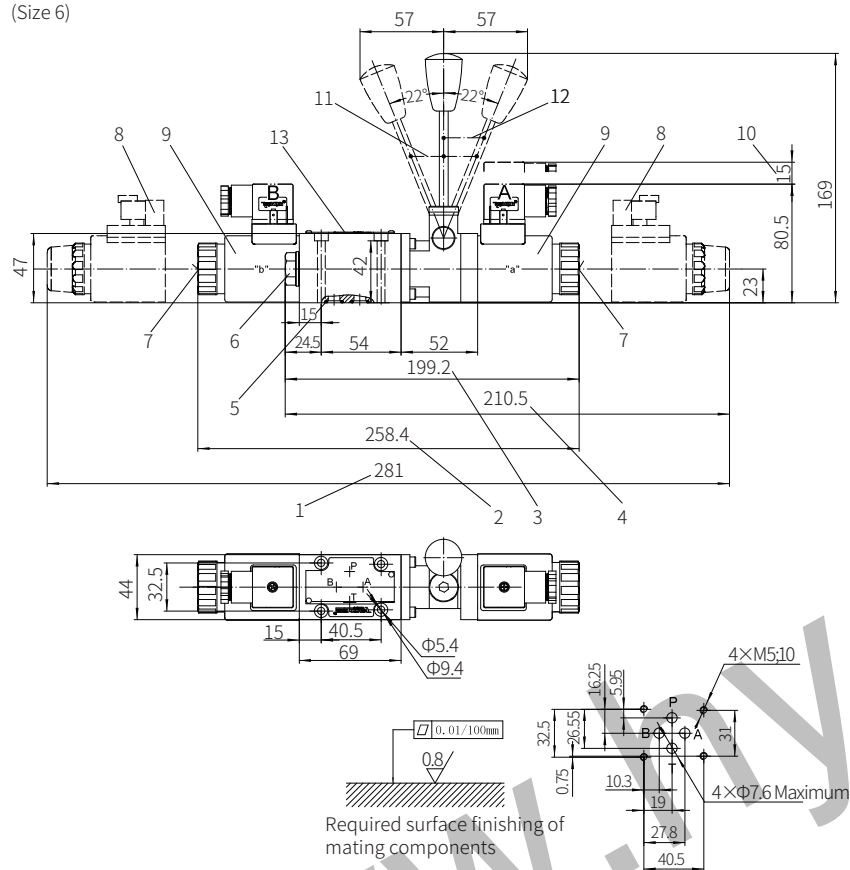
Contents

Function description, sectional drawing	02
Models and specifications	02
Technical parameters	03
Functional symbols	03
Component size	04-07

Features

- The opening, closing and direction of the flow controlled by the solenoid and manual
- Wet-pin solenoid with detachable coil
- The solenoid can rotate 90 °
- Subplate mounting

Valve with DC or AC rectified solenoid
(Size 6)

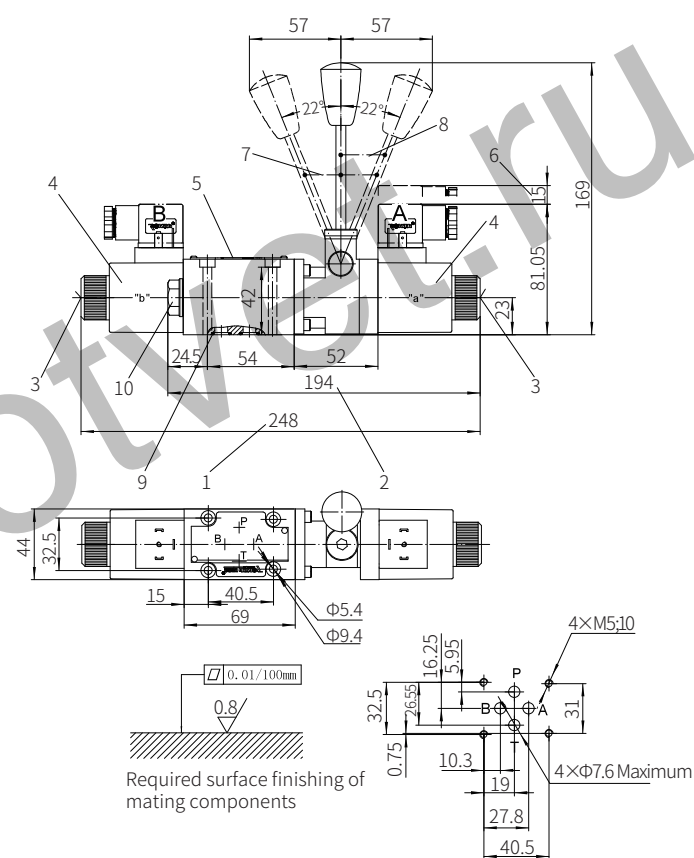


- 1 Size of 3-position valve (waterproof type)
- 2 Size of 3-position valve
- 3 Size of 2-position valve
- 4 Size of 2-position valve (waterproof type)
- 5 O-ring 9.25x1.78 (for oil ports P, A, B, T)
- 6 Plug for 2-position valve
- 7 Hidden emergency button
- 8 Deutsch plug
- 9 Solenoids
- 10 Space required to remove plug
- 11 Switching position for 3-position valve
- 12 Switching position for 2-position valve

Valve fixing screw
M5x50-10.9 grade GB/T70.1-2000
Tightening torque $M_A=7.8\text{Nm}$

It must be ordered separately
if connection subplate is needed.
Subplate model:
G341/01 (G1/4"); G341/02 (M14x1.5)
G342/01 (G3/8"); G342/02 (M18x1.5)
G502/01 (G1/2"); G502/02 (M22x1.5)

Valve with AC solenoid
(Size 6)

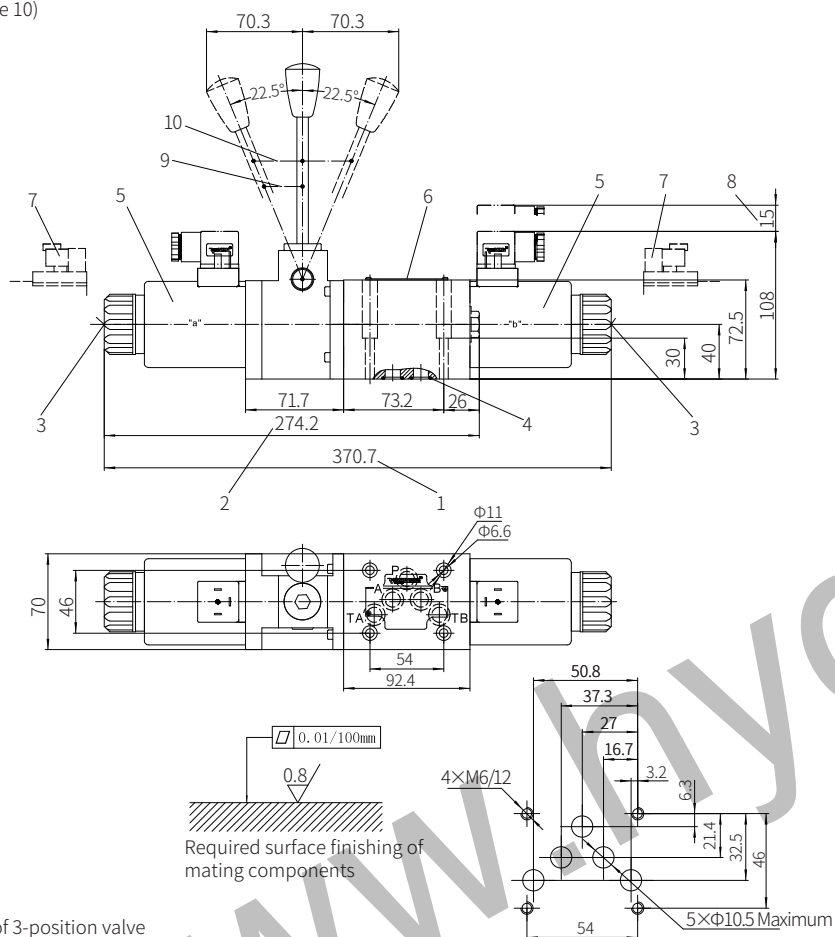


- 1 Size of 3-position valve
- 2 Size of 2-position valve
- 3 Hidden emergency button
- 4 Solenoids
- 5 Name plate
- 6 Space required to remove plug
- 7 Switching position for 3-position valve
- 8 Switching position for 2-position valve
- 9 O-ring 9.25x1.78 (for oil ports P, A, B, T)
- 10 Plug for 2-position valve

Valve fixing screw
M5x50-10.9 grade GB/T70.1-2000
Tightening torque $M_A=7.8\text{Nm}$

It must be ordered separately
if connection subplate is needed.
Subplate model:
G341/01 (G1/4"); G341/02 (M14x1.5)
G342/01 (G3/8"); G342/02 (M18x1.5)
G502/01 (G1/2"); G502/02 (M22x1.5)

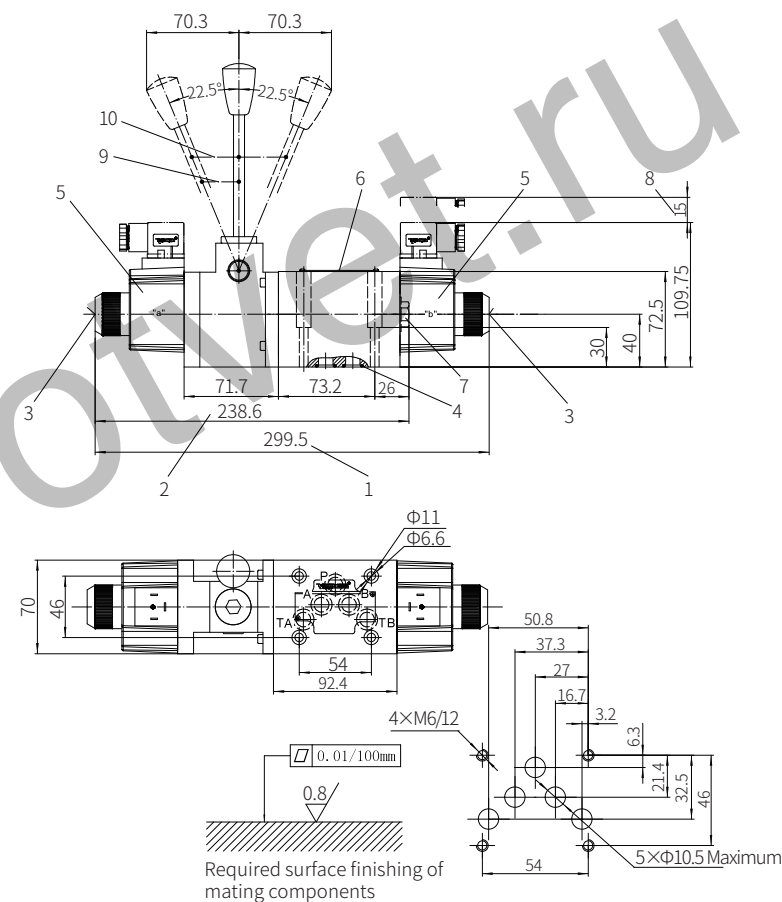
Valve with DC or AC rectified solenoid
(Size 10)



- 1 Size of 3-position valve
- 2 Size of 2-position valve
- 3 Hidden emergency button
- 4 O-ring 12x2 (for oil ports P, A, B, T)
- 5 Solenoids
- 6 Name plate
- 7 Deutsch plug
- 8 Space required to remove plug
- 9 Switching position for 2-position valve
- 10 Switching position for 3-position valve

Valve fixing screw
M6x40-10.9 grade GB/T70.1-2000
Tightening torque $M_A=13.7\text{Nm}$
It must be ordered separately
if connection subplate is needed.
Subplate model:
G66/01 (G3/8"); G66/02 (M18x1.5)
G67/01 (G1/2"); G67/02 (M22x1.5)
G534/01 (G3/4"); G534/02 (M27x2)

Valve with AC solenoid
(Size 10)



- 1 Size of 3-position valve
- 2 Size of 2-position valve
- 3 Hidden emergency button
- 4 O-ring 12x2 (for oil ports P, A, B, T)
- 5 Solenoids
- 6 Name plate
- 7 Deutsch plug
- 8 Space required to remove plug
- 9 Switching position for 2-position valve
- 10 Switching position for 3-position valve

Valve fixing screw
M6x40-10.9 grade GB/T70.1-2000
Tightening torque $M_A=13.7\text{Nm}$
It must be ordered separately
if connection subplate is needed.
Subplate model:
G66/01 (G3/8"); G66/02 (M18x1.5)
G67/01 (G1/2"); G67/02 (M22x1.5)
G534/01 (G3/4"); G534/02 (M27x2)