

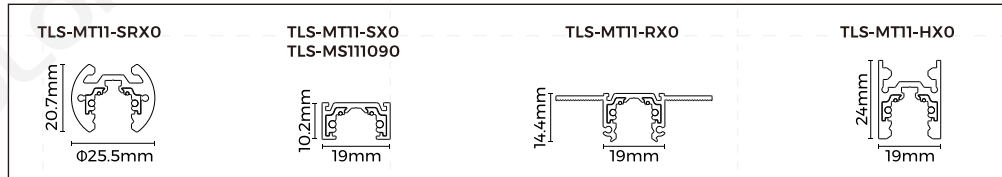
Track Installation Instructions

1. Precautions About Product and Installation

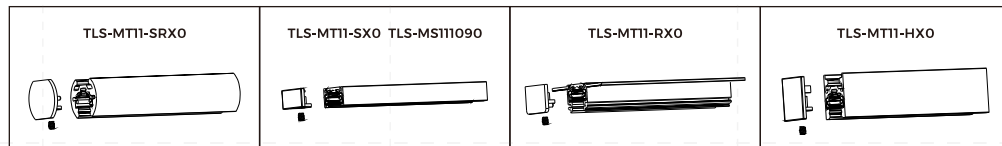
All operation mentioned here must only be performed by professionals. During installation, be sure to shut down all voltage equipment and comply with relevant national operation regulations. The end users and/ or installers should be responsible for the following:

1. Ensure good electrical, mechanical and temperature compatibility of the system with the track to be installed and its connected equipment; 2. The track, accessories and adapters must not exceed the specified loads and distance; 3. Cannot use parts without quality marks. Use specified connectors only. (specified connectors can only be used for our company's track); 4. Parts should be installed as per instructions; 5. If using non-original parts or installing without following instructions, the manufacturer is not responsible for the safety and functionality of the system. In this case, users should ensure that products and luminaires are compatible with each other electrically, mechanically and thermally.

2. Product Structure Diagram

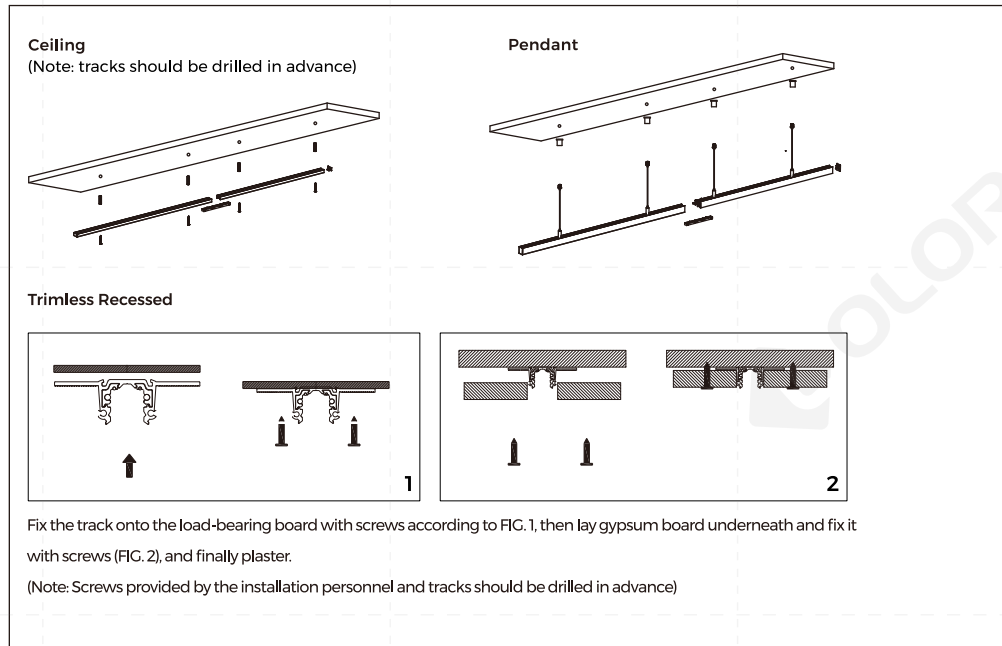


3. Installation instruction of END CAP

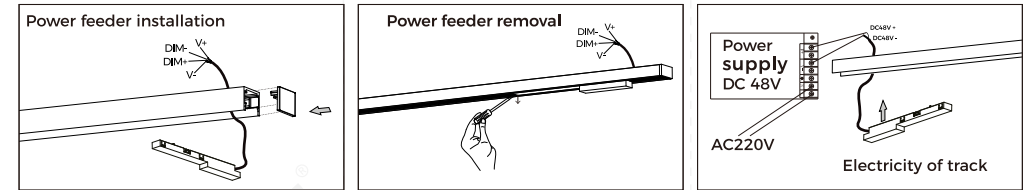


End caps are used in the first and last track. When fixing them onto the track, be sure to tighten the 2 screws.

4. Diagram of track connection

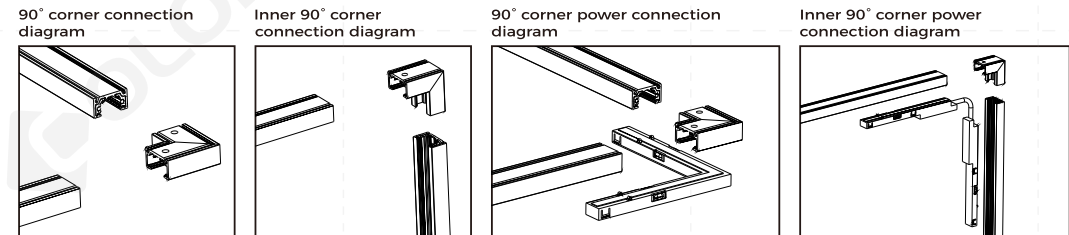


5. Power feeder and power supply



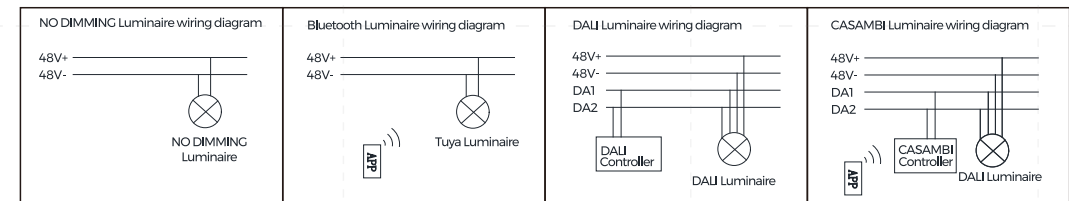
6. Standard Corner

I-shaped electrical connector is used for electricity at the junction of two tracks, The connector should be pressed in place.



The installation instructions for above 4 cases apply to all track models.

7. Wiring diagram



8. Installation diagram of lighting fixtures

