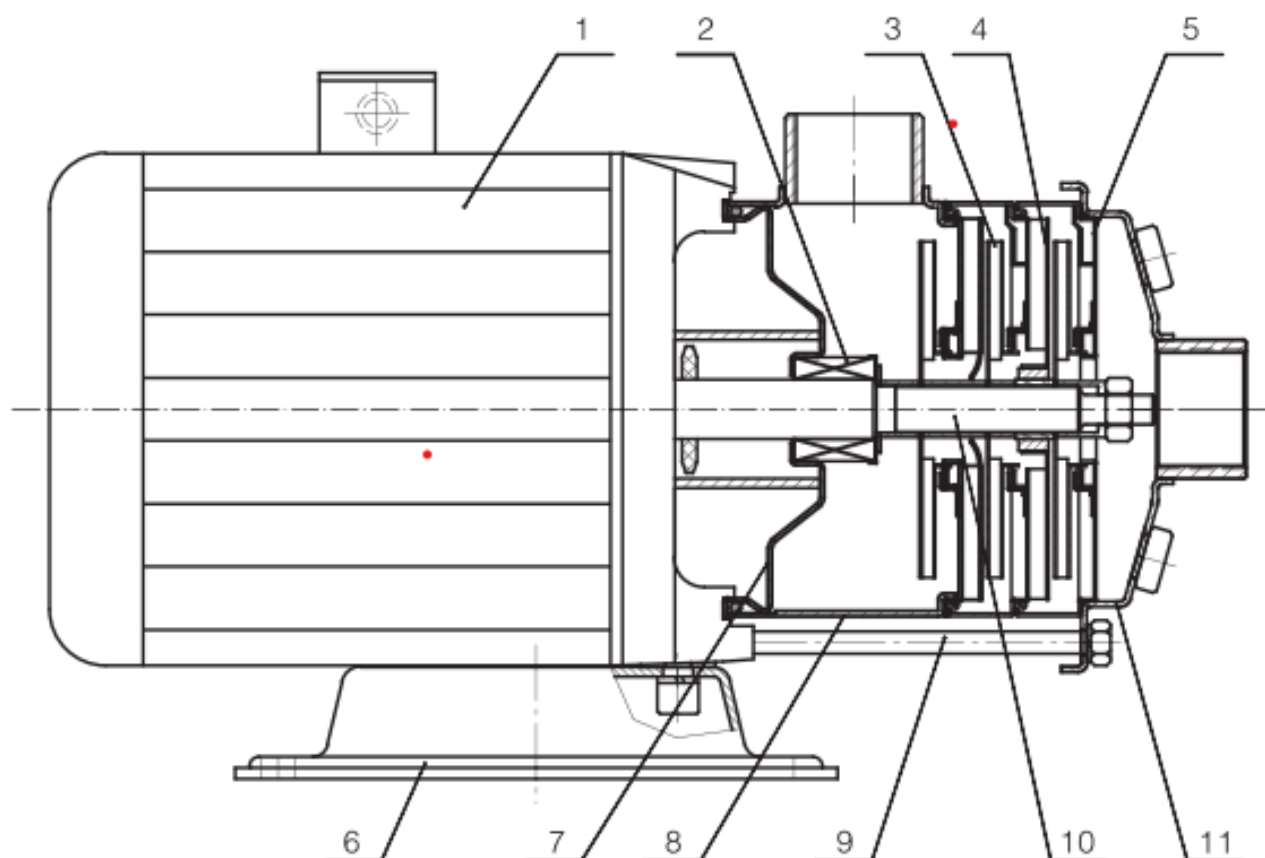


Structure SEM2,4,8,12,16,20



Materials SEM2,4,8,12,16,20

No.	Spare parts	Material	GB	EN/DIN	AISI/ASTM
1	Motor	/	/	/	/
2	Outlet	Stainless steel	GB/T20878-06Cr19Ni10	EN 10088-1.4301	AISI304
3	Tie rod	Stainless steel	GB/T20878-06Cr19Ni10	EN 10088-1.4301	AISI304
4	Impeller	Stainless steel	GB/T20878-06Cr19Ni10	EN 10088-1.4301	AISI304
5	Diffuser	Stainless steel	GB/T20878-06Cr19Ni10	EN 10088-1.4301	AISI304
6	Inlet suction	Stainless steel	GB/T20878-06Cr19Ni10	EN 10088-1.4301	AISI304
7	Bottom seat	Steel	/	/	/
8	Mechanical seal	/	/	/	/
9	Extend shaft	Stainless steel	GB/T20878-06Cr19Ni10	EN 10088-1.4301	AISI304
10	Support diffuser	Stainless steel	GB/T20878-06Cr19Ni10	EN 10088-1.4301	AISI304

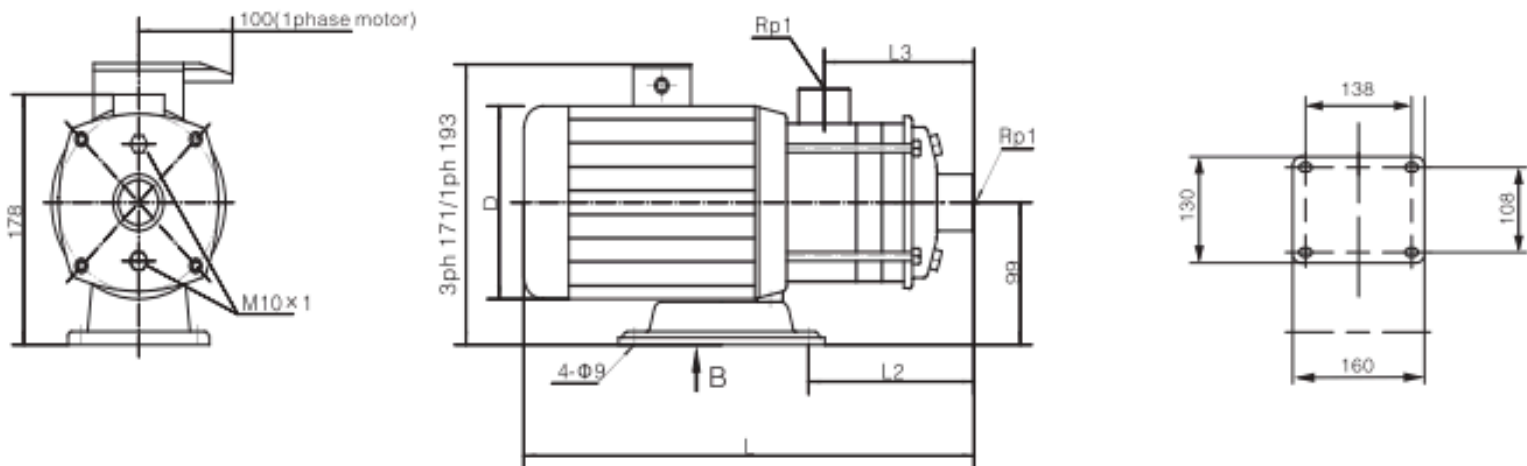
SEM Proudct range introduction

Parameter	SEM2	SEM4	SEM8	SEM12	SEM16	SEM20
Rated flow rate [m ³ /h]	2	4	8	12	16	20
Rated flow rate [l/s]	0.56	1.1	2.2	3.3	4.4	5.6
Flow rate [m ³ /h]	0.6~3.2	1~7	5~11	7~16	8~22	10~28
Flow rate [l/s]	0.17~0.89	0.28~1.9	1.39~3	1.9~4.4	2.2~6.1	2.8~7.8
Maximum pressure [bar]	5.3	5.6	5	6	5.3	5.3
Power [kW]	0.37~0.75	0.37~1.1	0.75~2.2	1.2~3	2.2~4	2.2~4.4
Temperature range [°C]	-15~105					
Highest efficiency [%]	46	58	62	63	66	69
Thread connection						
Outlet	Rp1	Rp1	Rp1 $\frac{1}{4}$	Rp1 $\frac{1}{2}$	Rp2	Rp2
Inlet	Rp1	Rp1 $\frac{1}{4}$	Rp1 $\frac{1}{2}$	Rp1 $\frac{1}{2}$	Rp2	Rp2

Performance data

Model	Power		Q (m ³ /h)	0.6	1.2	1.6	2	2.4	2.8	3.2
	(kW)	(HP)								
SEM2-20	0.37	0.5	H (m)	18.6	17.6	16	15	13.5	10.6	9.3
SEM2-30	0.37	0.5		27.7	26	24	22	19.5	16.5	13.5
SEM2-40	0.55	0.75		35.7	34	32	29	25.5	23.5	19
SEM2-50	0.55	0.75		45	42	39	36	33	28	24.5
SEM2-60	0.75	1		53	50	47.5	43.5	39	34	29.5

Installation dimensions and weight



Motor	Model	Dimension (mm)				Weight (kg)
		L	L2	L3	D	
3ph/1ph	SEM2-20	328	103	87	137	12
	SEM2-30	346	121	105	137	12
	SEM2-40	364	139	123	137	13
	SEM2-50	382	157	141	137	13
	SEM2-60	431	175	159	156	14

Performance cruve

