

Longhorn Simplifies Distributed Block Storage in Kubernetes

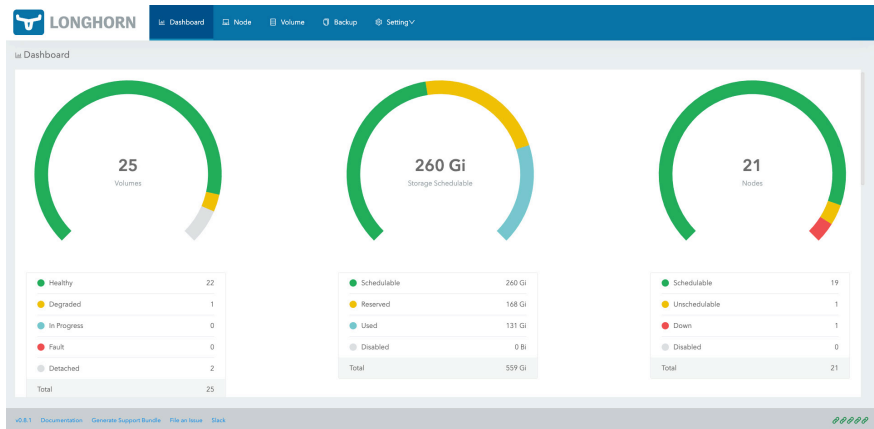


Longhorn and Rancher

Longhorn is a cloud-native, lightweight yet powerful distributed storage platform for Kubernetes that can run anywhere. When combined with Rancher, Longhorn makes the deployment of highly available persistent block storage in your Kubernetes environment easy, fast and reliable.

Why Longhorn and Rancher?

- ✓ 1-click deployment from within Rancher's app catalog
- ✓ Keep your data secure with snapshots and backups
- ✓ Reliable and simple to use with a free, intuitive GUI dashboard
- ✓ Fast recovery with definable RPO & RTO
- ✓ 100% open source and an active CNCF Sandbox project
- ✓ Up to 24/7 enterprise support and customer success options available from Rancher Labs



Simplify your operations

Orchestrate your storage needs on-demand to eliminate the cross-functional challenges often experienced when provisioning enterprise storage.

- **One-click installation and deployment** – where teams can easily install Longhorn directly via the Rancher application catalog, using Helm or with kubectl
- **A free, intuitive user-interface dashboard** for easy understanding and management of your storage system
- **Infrastructure agnostic** solution that operates the same across on-premise and cloud

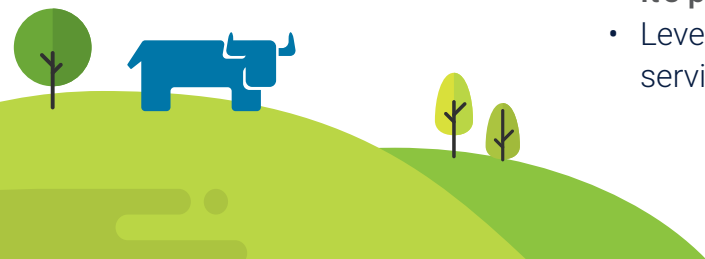
Maximize development agility

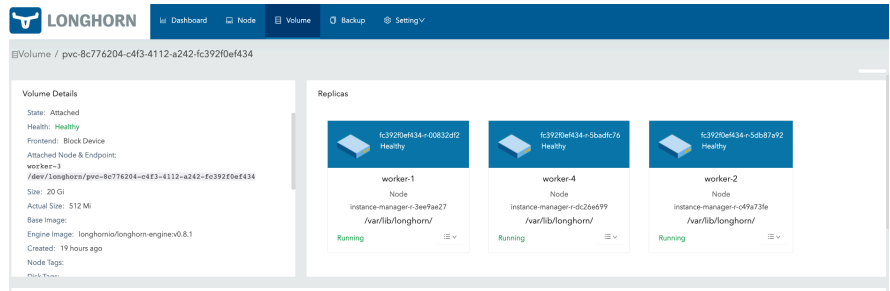
The screenshot shows the Longhorn Node view with the following table:

Name	Status	Readiness	Replicas	Allocated	Used	Size	Tags	Operation
worker-1 10.42.2.1	Schedulable	Ready	1	20/21.63 Gi	6.39/15.45 Gi	10.8 Gi	+4.63 Gi Reserved	
worker-2 10.42.2.2	Schedulable	Ready	1	20/21.63 Gi	6.66/15.45 Gi	10.8 Gi	+4.63 Gi Reserved	
worker-3 10.42.1.3	Schedulable	Ready	1	15/21.63 Gi	6.78/15.45 Gi	10.8 Gi	+4.63 Gi Reserved	
worker-4 10.42.1.2	Schedulable	Ready	1	20/21.63 Gi	6.65/15.45 Gi	10.8 Gi	+4.63 Gi Reserved	

Lean engineering teams use Longhorn to easily manage their storage operations while maintaining the agility to build reliable applications.

- Longhorn is **100% open source** software and a CNCF sandbox project
- **Simple and affordable** alternative to overly complex, container storage solutions from legacy vendors
- **It's production-ready** and free to use with no licensing fees
- Leverage **dynamic provisioning** of volumes to enable self-service operations





Enterprise-grade disaster recovery

Longhorn has multiple built-in security features to protect your data from threats such as malicious attacks, human error and system failures. These features include:

- Eliminating errors by **creating secure policies** and automating your backups within the Longhorn UI
- Build a resilient disaster recovery system — with features to give users control over **cross-cluster replication** and granularity over volumes
- Leverage widely available storage formats for backups including S3 and NFS

“Kubernetes is forcing a culture change within our technical teams. It’s encouraging teams to work faster and with greater agility. Easy to adopt and reliable solutions like Longhorn and Rancher are helping us champion this necessary change throughout the engineering business.”

Senior Data Engineer at an Australian Telecommunications Company

Longhorn is a CNCF sandbox project

In 2017, Rancher Labs first announced the release of Longhorn — a new open source project to address the growing demand within the Kubernetes community for a simplified, affordable distributed block storage solution.

After 2 years of intensive research and development, Rancher Labs donated Longhorn to the CNCF — a sign of the company’s ongoing commitment to promote the adoption of enterprise-grade open source technology within the cloud-native ecosystem.

Rancher Labs continues to be the project’s principle contributor, with a dedicated engineering team working on Longhorn. Contribute to the growing Longhorn community via [GitHub.com/Longhorn](https://github.com/Longhorn).

FIND OUT MORE AT [RANCHER.COM/LONGHORN](https://rancher.com/longhorn)

