



ZARGES



Certified
quality in
accordance with
DIN EN ISO
9001 : 2000

Packaging, transportation, storage

NEW!

→ ZARGES Case Center
→ a wealth of innovations



www.zarges.com

Systems in aluminium

Mission statement, our goal ...

ZARGES Logistics Equipment – made by professionals for professionals.

Whatever your application: manufacturing, packaging, storage, transportation, organisation or protection: ZARGES Logistics Equipment has the optimum solution. We offer tried and tested, well thought-out and practical solutions with the high quality and lasting value required in professional applications.

In addition, we have an extensive range of accessories for a wide variety of requirements. Constant availability and continuing supply of spare parts ensure that you do not lose valuable time in the execution of your work.



Table of contents

Competence in production and development	page	4
Properties of aluminium	page	5
K470 universal container	from page	6
K470 – the Innovation	page	8 – 13
Quality characteristics in detail	page	14 – 15
K470 – an overview	page	16 – 19
ZARGES Case Center	page	20 – 21
K470 accessories	page	22 – 29
NEW! K470 Plus	page	30 – 33
Special containers	from page	34
K450 shipping case	page	34
Toolbox	page	35
K412 Rollbox	page	35
NEW! K415 Mobile Box	page	36 – 37
NEW! K405 Transport box	page	38
Collapsible containers and RetouR® system containers	page	39
Cases	from page	40
K410 Alu Case	page	40 – 41
P472 case	page	42 – 45
P402 case	page	46
Service and attaché cases	page	47
Containers and baskets	page	48
Dolly trolleys	page	49
ZARGES hazardous goods packaging – tested safety	from page	50
BY container	page	53
K470 universal container – GGV	page	54 – 55
Mitraset® 19"-housing	page	56
K475 transport and storage container	page	57
K410 Alu Case – GGV	page	58
Container for hazardous substances in accordance with Category 7	page	59
Container for hazardous substances in accordance with Category 6.2	page	60 – 61
Container for hazardous substances in accordance with Category 1	page	62
Collapsible containers for less-than-cargo lots	page	63
Flat pallets	page	64 – 65
NEW! Storage and retrieval shelving	from page	66
Shelving system	page	66 – 67
Accessories	page	68 – 69
Trolleys	from page	70
Box trolleys	page	70 – 80
Box trolley accessories	page	81
Cupboard trolleys and cage trolleys	page	82 – 86
Cupboard trolley accessories	page	87
Platform trolleys	page	90
Recyclables collection systems	page	92 – 94
Index	page	96 – 97
General terms and conditions	page	98
ZARGES on the Internet	page	99

K470 universal container
page 6 – 33

Special containers
page 34 – 39

Cases
page 40 – 47

Containers and baskets
page 48

Dolly trolleys
page 49

ZARGES hazardous goods containers – tested safety
page 50 – 63

Flat pallets
page 64 – 65

Storage and retrieval shelving
page 66 – 69

Trolleys
page 70 – 91

Recyclables collection systems
page 92 – 94

Index
page 96 – 97
General terms and conditions
page 98
ZARGES on the Internet
page 99



ZARGES Know-how in development and production

➔ **The strengths of ZARGES lie in the development of new products, the rapid implementation of new ideas in user-oriented, innovative solutions, adherence to the highest quality standards and comprehensive support for its customers.**



ZARGES has many years of experience in the development and production of logistics equipment for industry, trade and the public sector, designed to meet the highest quality requirements. At its main production site, ZARGES has state-of-the-art production and storage facilities with in an area of more than 23000 m².

Using the latest CAD systems, ZARGES develops the optimum solutions tailored to the specific requirements of its customers. Technical drawing data is exchanged in the course of the processing of a project in order to allow examination of the construction space to be carried out as quickly as possible, thus simplifying the development of the overall system. Our development processes and products comply with all the latest national and international standards (certified in accordance with DIN EN ISO 9001 – 2000).

The production processes used and the degree of automation in development and production necessitate a high degree of process capability in sequences and in the manufacture of our products. This means our customers can always rely on consistently high production quality "Made by ZARGES" – at attractive prices and with short delivery times.

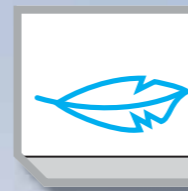


On the one hand, ZARGES is small enough to be able to cater for individual requirements, while on the other hand, the company is large enough to have at its fingertips the requisite know-how in development, consultation, planning, production and services.

This means we can offer our customers products to meet almost any requirement.



Economical, safe and environmentally friendly:



Aluminium is lightweight, yet extremely stable:
Aluminium has a density of only approx. 2.6 to 2.8 g per cm³. That is approx. 1/3 the density of steel. In spite of its low weight, aluminium is extremely strong.



Aluminium is vapour-impermeable:
Even when stored over very long periods of time, moisture will not diffuse through the material. In welded construction, an aluminium container can be made as a water-vapour proof design.



Aluminium is impact-resistant and extremely strong:
Its surface dents on impact, but the force of the blow is absorbed by the deformation.



Aluminium is magnetically neutral:
Aluminium is not magnetic. This material characteristic can be of great significance for certain applications.



In addition, aluminium is insensitive to extreme fluctuations in temperature:
Within the temperature range of –40 to +80 °C, the material characteristics remain constant.



Aluminium is fullt recyclable:
Used aluminium can be melted and used again – which means a significant contribution to reducing waste and to environmental conservation.



Aluminium is corrosion-resistant and protects itself:
When it comes into contact with oxygen, the surface of aluminium oxidises, and this layer of oxide immediately reforms when damaged.



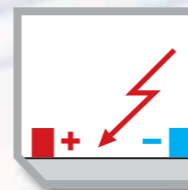
Aluminium is resistant to UV rays:
Long periods of storage and exposure to UV rays have no effect on this material.



Aluminium is hygienic:
Its smooth surface is easy to clean and odorless. Aluminium containers are ideal for use in areas with high hygiene requirements.



Aluminium can be processed in a wide variety of ways:
All standard processing methods – welding, moulding etc. – can be applied to aluminium, and in many cases their application is much easier than with most other metals.



Aluminium is antistatic:
Aluminium is a good conductor of electricity and heat, which is an advantage, for example when producing housings for electronic fixtures.



➔ **ZARGES, one of the leading companies in the field of aluminium processing, has relied on the advantages of this material for decades. As a result, it has developed a wide range of boxes, containers, cases, baskets, trolleys and individual special constructions to solve your logistics problems. As reusable products with a long service life, they make an invaluable contribution to the protection of our environment.**



➔ Maximum protection with "low" weight



ZARGES universal containers

More than 50 years of innovation

The K470 universal container is a true classic. Developed in 1950, it still stands for the power of innovation, the highest quality standards, maximum functionality and convincing design. These are characteristics which made it the archetype on which most of the ZARGES logistics products were based. It has been redesigned in two stages, consistently kept abreast of the latest technological developments and the range extended to include practical accessories. It thus offers the optimum solution for safe transportation, economical storage, perfect packaging and reliable protection of your goods against external influences.



The K470 was successfully tested for compliance with international aviation standard ATA 300 (Category I). Category I means that a container has to survive at least 100 round trips as air freight – i. e. outward and return flights.

The following tests were carried out:

- ➔ **Drop test:** Cases were loaded with a weight of 23 kg and dropped 280 times from a height of 76 and 92 cm.
- ➔ **Spray water test:** For this test, the cases were sprayed with 100 litres of water for one hour.
- ➔ **Stability test:** This includes a vibration test in which the cases are loaded with a weight of 23 kg and left on a vibrating table for two hours.

ZARGES INNOVATION 2008

We can improve on good

ZARGES K 470 – the allrounder
is now even better!

➔ ZARGES innovations in cases, fasteners and handles set new benchmarks.

You don't transport raw eggs in a plastic bag, nor would you pack valuable objects in just any old case. For decades now, the ZARGES K470 aluminium universal container has demonstrated that it can protect its contents reliably against damage in transit. No matter how tough the going gets; this allround talent can take it. Both practical experience and top performance in various load tests prove it.

It has been redesigned in two stages, consistently kept abreast of the latest technological developments and the range extended to include practical accessories. It thus offers the optimum solution for safe transportation, economical storage, perfect packaging and reliable protection of your goods against external influences.



1st innovation:

FASTENERS:

Even easier to operate and
with a longer service life
see page 10-11



2nd innovation:

HANDLES:

Even better stability and
ergonomic shape
see page 12-13



3rd innovation:

CONTAINERS:

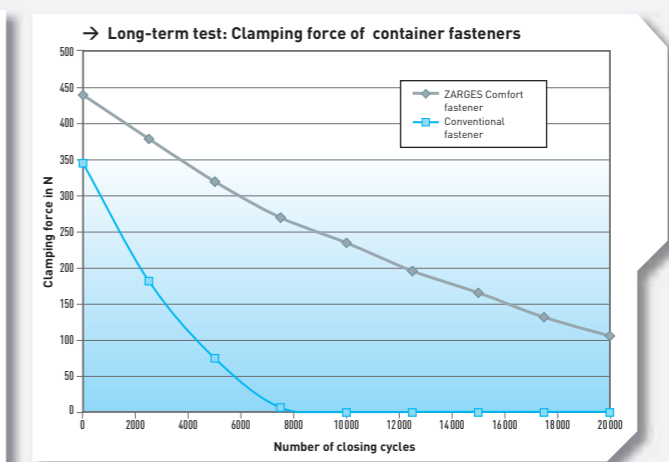
The K470 transportation
system now also consisting
of top and bottom sections
see page 30



In safe hands

Fasteners that are even easier to operate and with longer service life!

ZARGES INNOVATION 2008



Service life – tested 20 000 times and still holding their own

When it has been operated 5000 times, a conventional fastener has lost around 80 % of its clamping force. The consequence: the case lid may come open during transportation. In the same period of time, the new Comfort fastener has lost only 20 % of its clamping force, and thus its service life is much longer.

These results were confirmed in our own test laboratory in numerous fatigue tests. This increased service life is a feature unique to the new ZARGES Comfort fastener. **The new ZARGES container fasteners are protected by EU-wide utility patents!**



ZARGES INNOVATION 2008

Tailored to your needs – more variety in Comfort fasteners

The new ZARGES Comfort fasteners can be equipped with a lock or with spring anti-opening feature. It can also be secured with a shackle lock or lead seal.

Possible combinations:

1. Fastener with integral lock
2. Fastener with spring anti-opening feature
3. Fastener with shackle lock
Order No. 46 989
4. Fastener with spring anti-opening feature and integral lock

For details, see page 23.





Getting a good grip

Larger and more ergonomic for ideal carrying comfort!



➤ More ergonomic with a wider hand rest

Wider and thicker gripping surfaces mean that the cases are even easier to handle and can be carried for longer periods without tiring.



➤ Easier to access wearing gloves

The handles are 10% wider, making it even easier to grip them when wearing gloves.



➤ Optimum safety and extremely comfortable handling

The handles of the ZARGES cases proved their strength when tested against other comparable products: The reinforced handle plate means that the handles will not be bent upward by more than a defined angle, even under the heaviest loads. This ensures reliable protection against injury caused by the hands getting pinched in the handle.



Instead of this ...

... we have this:
ZARGES handles are stable – the new handles were also tested for compliance with military standard VG 95446-2 under a load of 375 N. The resulting change in the angle of the handle was only 1.5° (10° are permitted).

Quality all round – universal container K 470

The advantages for you, compare carefully, that's ZARGES.

➔ Superiority begins with the details. Top quality is always a question of detail, that explains perfectly why our universal containers are not only market leaders, but also leaders in quality.



Lid with foamed seal allround. Protected against wear, overloading, squashing and permanent deformation.



Full sealing function also ensured in the corner areas.



All riveted joints with full solid rivets.



Stainless steel hinge riveted in the sheet metal jacket and solid lid profiles (protection against being torn out).



Drop handles with return spring (stainless steel) and plastic grip, ergonomic and heavy-duty.



Skid bars made of sturdy aluminium sections on cases from outside dimensions 1200 x 800 mm (additionally reinforced).



Cast aluminium stacking corners.



2 durable lid straps. Sealed at the ends to prevent fraying. Will not tear out even under heavy loads. Attached with special rivets (with extra-large heads).



Aluminium / stainless steel snap fastener / hook. Corrosion resistant, can be secured with lead seals, plug or shackle lock up to a shackle thickness of 6 mm, optional spring anti-opening feature.



Depending on size, **beading all round and corner beads** for added stability and constructional stiffness.



Edge, base, lid profile frames made of solid profile sections, with joints fully welded, joined permanently through high-strength positive locking and swaging.



High-power flash butt welding process in accordance with DIN EN ISO 4063. This complex production process ensures a high degree of stability and resistance to deformation.



High-strength, smooth, attractive **spotwelded joints** in accordance with DIN ISO 4063. Gap-free, durable sheet metal lap joint.



K 470 shipping case



And the range of applications has increased yet again: With the addition of two new models, the K 470 series has grown and now comprises 27 different models, thus offering a unique choice of standard sizes.

Their capacity ranges from 13 to 829 litres. If you can't find what you need in this range, ZARGES also makes special sizes to order, minimum order quantities with no tooling.

It goes without saying that the new K 470 models also offer the legendary quality of our classic product.

The K 470 range is rounded off by a wide selection of carefully thought-out interior fittings and numerous solutions for easier handling.



- Stackable aluminium universal container.
- Lid with stainless steel hinge, two lid straps and foamed seal around.
- Cast-aluminium stacking corners.
- Edge, lid and base profile frames made of solid profile sections.
- Profile-section joints fully welded.
- Beading all round and corner beads for additional dimensional stability.
- Snap fasteners. Can be secured with a plug lock, lead seals, spring anti-opening feature or a padlock (max. shackle thickness 6 mm).
- Ergonomic heavy-duty sprung drop handles.
- Clearance dimensions approx. 30 mm less than inside dimensions.



Important note:
K 470 shipping case for the transportation of hazardous goods* available for an additional charge.
For details, see page 54.
*Tested: composite packaging UN 4B

Model	ref.	Inside dimensions (L x W x H, approx. mm)	Outside dimensions (L x W x H, approx. mm)	Contents (approx. l)	Weight (approx. kg)
40 835	1	350 x 250 x 150	400 x 300 x 180	13	2.6
40 677	2	350 x 250 x 310	400 x 300 x 340	27	3.1
40 810	3	550 x 350 x 150	600 x 400 x 180	29	4.2
40 568	4	550 x 350 x 220	600 x 400 x 250	42	4.8
40 678	5	550 x 350 x 310	600 x 400 x 340	60	5.0
40 564	6	550 x 350 x 380	600 x 400 x 410	73	5.3
40 849	7	550 x 550 x 220	600 x 600 x 250	67	5.6
40 859	8	550 x 550 x 380	600 x 600 x 410	115	6.6
40 836	9	550 x 550 x 580	600 x 600 x 610	175	7.8
40 837	10	600 x 430 x 450	650 x 480 x 480	116	6.5
40 838	11	600 x 560 x 300	650 x 610 x 330	101	6.5
40 839	12	600 x 560 x 440	650 x 610 x 470	148	7.4
40 840	13	660 x 600 x 350	710 x 650 x 380	139	7.6
40 841	14	690 x 460 x 380	740 x 510 x 410	121	6.9
40 842	15	690 x 640 x 340	740 x 690 x 370	150	8.0
40 843	16	690 x 640 x 430	740 x 690 x 460	190	8.6
40 565	17	750 x 550 x 380	800 x 600 x 410	157	10.0
40 566	18	750 x 550 x 580	800 x 600 x 610	239	12.0
40 844	19	780 x 480 x 520	830 x 530 x 550	195	11.1
40 845	20	900 x 480 x 400	950 x 530 x 430	173	11.0
40 846	21	900 x 640 x 450	950 x 690 x 480	259	13.4
40 567	22	950 x 450 x 380	1000 x 500 x 410	162	10.9
40 847	23	1150 x 350 x 150	1200 x 400 x 180	60	7.5
40 580	24	1150 x 750 x 480	1200 x 800 x 510	414	20.0
40 848	25	1350 x 400 x 220	1400 x 450 x 250	119	9.5
40 875	26	1550 x 550 x 465	1600 x 600 x 495	396	25.0
40 876	27	1650 x 750 x 670	1700 x 800 x 700	829	30.0

Important note: Clearance dimensions approx. 30 mm less than inside dimensions (length and width). Special sizes on request. Accessories: see from page 22.

Standard models supplied empty of content.

1 case – 1000 possibilities.

Whether a standard product or a special construction, ZARGES cases always offer the perfect solution for your specific requirements.



➔ What is the ZARGES Case Center?

Nowadays, discerning customers are looking for more than just an empty case. What they need are complete packaging solutions. So ZARGES offers not only cases, but has expanded its range to include a wide selection of well thought-out accessories.

Case Center: always the best possible packaging solution



Selecting the right series

Depending on your requirements, ZARGES offers various product series, from the universal K 470 series to the robust P 472 plastic cases or the water-vapour-proof K 475. If required, many series are also available with approval for the transportation of hazardous goods. New series such as the K 470 Plus or the Mobile Box K 415 round off the product range.



In the right size

ZARGES offers a comprehensive range of standard sizes. If you still do not find the size you need in the standard range, ZARGES can make special sizes to order.



Interior fittings

For optimum packaging, you also need the right **interior fittings**. ZARGES offers a standard range of foam linings for all K 470 and K 450 catalogue sizes. Pick 'n Pluck foam sets and adjustable divider panel systems are also available for most conventional sizes. ZARGES offers the right foam linings made to your specifications for any transport problem, no matter how unusual.



Paint finish and identification

On request, the cases can be supplied with RAL **paint finish**, lettering, embossing or other identification to your specifications.



Mobility solutions

Depending on size, weight and transport conditions, the ZARGES Case Center offers the appropriate **mobility solution**: Clip-on castors, add-on castors, removable trolleys or pallet substructures, also for retrofitting. The ZARGES K 470 can now be equipped with lifting equipment approved by the German technical inspection agency, a factory fitted option.



K470 accessories



Attaché insert

- A practical folder for documents and working utensils, it is made of hard-wearing fabric and is for fitting by the customer.
- For all K 470 and K 450 models from inside dimensions 550 x 350 mm (L x W)
- Dimensions (L x W): 430 x 290 mm
- **Order No. 40 626**



Toolbag

- A portable, detachable storage bag for tools.
- It is made of hard-wearing fabric and is for fitting by the customer.
- For all K 470 and K 450 models from inside dimensions 550 x 350 mm (L x W)
- Dimensions (L x W): 435 x 260 mm
- **Order No. 40 627**



Adjustable divider panel system 1

- The individual organisation system for large items, made of high-quality foam, for fitting by the customer.
- Including base foam and nubby foam in the lid.
- For all K 470 and K 450 models with inside dimensions 550 x 350 mm (L x W)
- Dimensions (L x W x H): 550 x 350 x 190 mm
- **Order No. 40 730**



Adjustable aluminium divider panel set

- Consisting of a divider panel with 2 notched bars for even better organisation.
- **Set 1**
For: 40 568, 40 721
Dimensions (W x H): 346 x 215 mm
Order No. 40 864
- **Set 2**
Fits: 40 678, 40 564, 40 722 – 40 724
Dimensions (W x H): 346 x 305 mm
Order No. 40 865
- **Set 3**
Fits: 40 567
Dimensions (W x H): 446 x 345 mm
Order No. 40 866



Adjustable divider panel system 2

- Foam ring and base panel in PE foam Ethafoam 220.
- Nubby foam for lid, self-adhesive.
- Compartment set in Kömatex (foamed PVC), sheet thickness 5 mm, consisting of 2 lengthwise and 3 transverse partitions. Lengthwise and transverse partitions can be inserted as required
- Size of the compartments approx. 170 x 170 mm
- For K 470 and K 450 models with inside dimensions 750 x 550 mm (L x W)
- Dimensions (L x W x H): approx. 750 x 550 x 330 mm
- **Order No. 40 731**



Shackle lock

- Shackle lock with 4-digit, freely selectable number combination.
- Shackle diameter 5 mm.
- **Order No. 46 989**



TSA shackle lock

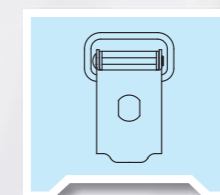
- Shackle lock with 4-digit, freely selectable number combination.
- The shackle lock can be opened by American TSA staff without it being damaged.
- **Order No. 46 789**



Lock set

- For all boxes designed to be equipped with locks in snap fasteners.
- Consisting of 2 locks and 2 keys.
- Only identical locks in one set.
- Order No. 40 830, 40 832**
- Complete series of identical locks.
- Order No. 40 831, 40 833**

Fasteners



Lock set

- For **Classic fastener**
- Order No. 40 830, 40 831



Lock set

- For **Comfort fastener**
- Order No. 40 832, 40 833

NEW!



Catch spring retention (anti-opening feature)

- For all cases with
- Comfort fastener only
- Order No. 40 834**

K470 accessories



Foam lining

- On request, all K470 and K450 models can be supplied with a durable, abrasion-resistant lining made from PE foam.
- Base and wall sections made from Plastazote LD 45, (specific gravity 45 kg/m³, thickness 11 mm), lid lined with PU nubby foam.
- Other materials and wall thicknesses on request.
- **Order No. see table**



Pick 'n Pluck foam set

- Pre-cut flexible-foam inserts made from open-cell PU foam.
- The fast and simple solution for individual items or small batches.
- Shape can be changed without tools.
- Sheet thicknesses in the set: 2 sheets each of 30 mm and 60 mm, nubby-foam lid insert 30 mm, base foam 10 mm.
- Including adhesive.

- **Set 1**
Fits 40 810, 40 564, 40 568, 40 678, 40 721 – 40 723
Dimensions (L x W x H):
550 x 350 x 220 mm
Order No. 40 735
- **Set 2**
Fits 40 565, 40 566, 40 725, 40 716
Dimensions (L x W x H):
750 x 550 x 220 mm
Order No. 40 736



Order No.	For	Inside dimensions (L x W x H, approx. mm)
43 860	40 835	350 x 250 x 150
43 861	40 677, 40 720	350 x 250 x 310
43 862	40 810	550 x 350 x 150
43 863	40 568, 40 721	550 x 350 x 220
43 864	40 678, 40 722	550 x 350 x 310
43 865	40 564, 40 723	550 x 350 x 380
43 866	40 849	550 x 550 x 220
43 867	40 859	550 x 550 x 380
43 868	40 836	550 x 550 x 580
43 869	40 837	600 x 430 x 450
43 870	40 838	600 x 560 x 300
43 871	40 839	600 x 560 x 440
43 872	40 840	660 x 600 x 350
43 873	40 841	690 x 460 x 380
43 874	40 842	690 x 640 x 340
43 875	40 843	690 x 640 x 430
43 876	40 724	750 x 350 x 310
43 877	40 565, 40 725	750 x 550 x 380
43 878	40 566, 40 716	750 x 550 x 580
43 879	40 844	780 x 480 x 520
43 880	40 845	900 x 480 x 400
43 881	40 846	900 x 640 x 450
43 882	40 567	950 x 450 x 380
43 884	40 580	1150 x 750 x 480
43 885	40 875	1550 x 550 x 465
43 886	40 876	1650 x 750 x 670
43 887	40 847	1150 x 350 x 150
43 888	40 848	1350 x 400 x 220



Individual foam inserts

- We manufacture tailor-made foam inserts in a large range of materials to provide perfect protection and functionality geared specifically to the goods you are transporting.
- One of the special features of these top-quality foams is that it is possible to calculate in advance the degree of protection which will be provided by the finished packaging.
- On the basis of weight, surface area, drop height and sensitivity of the goods (G value), we develop for you packaging with the optimum padding thickness. The result: lowest possible raw material requirements with maximum protection.
- On request, we can also supply inserts with antistatic finish or dissipative design.



Standard padded inserts

- Foam insert, adaptable for transporting bottles Ø 40 to 100 mm.
- Absorbent material integrated.
- Details on request.

Standard models supplied empty of content.

K470 accessories

ZARGES K470 cases can be supplied with lifting equipment tested by the German technical inspection agency.

Product characteristics:

→ Can bear loads of up to 200 kg per case.

There are two models available, both are factory fit items.

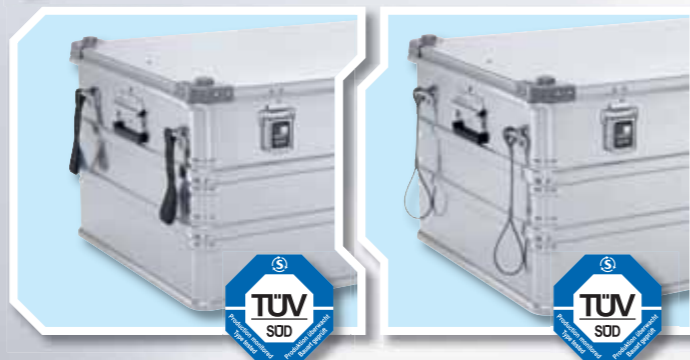
Model 1: Lifting strap made from synthetic fibers

- Low weight.
- No metallic rattling.
- 4 pieces required per case.
- **Order No. 357 001**

Model 2: Lifting sling made from stainless steel wire

- Easy cleaning and decontamination.
- High resistance to UV rays and chemicals.
- 4 pieces required per case.
- **Order No. 357 976**

NEW! Lifting equipment with TÜV approval



Trolley

- Telescopic trolley.
- For easy fitting by the customer.
- Pull-out and lockable handle.
- Ideal for boxes with an outside length of 600 mm–800 mm.
- Easy-running running gear, Ø 54 mm.
- Load capacity 30 kg.
- Fits all K470 and K450 models with a length of 600–800 mm.
- **Order No. 40 739**



Supplementary items for trolley

- Supplementary set enables the trolley to be used with other boxes/cases.
- **Order No. 40 740**



Clip-on castors

- Mobility for all models from inside dimensions 550 mm × 350 mm upwards.
- Tool-free installation.
- Made of solid rubber, Ø 100 mm, swivel castors fitted with wheel brakes.
- Load capacity up to 90 kg on 4 castors.

→ **2 fixed castors**

each with a clamping mechanism 1 × left and 1 × right.

Order No. 40 741

→ **2 swivel castors**

each with clamping mechanism 1 × left and 1 × right.

Order No. 40 742

Configuration recommendations:

- 2 swivel castors (1 × Order No. 40 742) and 2 fixed castors (1 × Order No. 40 741) or
- 4 swivel castors (2 × Order No. 40 742)



Add-on castors

- 2 castors made from high-quality polyamide.
- Simple assembly.
- Load capability 50 kg/set.
- Ideal for boxes with an outside length of 800–1000 mm.
- Delivery includes the required mounting equipment and assembly instructions.
- **Order No. 40 738**



W 150 dolly trolley

- Aluminium chassis, low version.
- Running gear: 2 swivel and 2 fixed castors, Ø 125 mm, 40 mm wide, easy running, rubber wheels, “non-marking”, roller bearings, thread guards.
- For further details, see page 49.



Pallet substructure

- On request, the boxes can be fitted with a pallet substructure.
- Pallets made from wood, plastic or aluminium.
- Details on request.



W 152 dolly trolley

- Aluminium chassis, high version. H = 450 mm.
- Running gear: 2 swivel and 2 fixed castors, corner-mounted, Ø 125 mm, 40 mm wide, easy running, rubber wheels, “non-marking”, roller bearings, thread guards.
- For further details, see page 49.

Compatibility for K 470 and K 450

Order No.	Designation	Compatible with
40 626	Attaché insert	all K 470 and K 450 models excl. Order Nos. 40 677, 40 835 and 40 720
40 627	Toolbag	all K 470 and K 450 models excl. Order Nos. 40 677, 40 835 and 40 720
40 730 ¹⁾	Adjustable divider panel system 1	K 470 and K 450 models with inside dimensions 550 × 350 mm, min. height 220 mm
40 731 ¹⁾	Adjustable divider panel system 2	K 470 and K 450 models with inside dimensions 750 × 550 mm, min. height 380 mm
40 735	Pick 'n' Pluck foam set 1	K 470 and K 450 models with inside dimensions 550 × 350 mm
40 736	Pick 'n' Pluck foam set 2	K 470 and K 450 models with inside dimensions 750 × 550 mm
40 864	Alu divider panel system 1	Divider panel height 215 mm, fits boxes with inside width 350 mm
40 865	Alu divider panel system 2	Divider panel height 305 mm, fits boxes with inside width 350 mm
40 866	Alu divider panel system 3	Divider panel height 345 mm, fits boxes with inside width 450 mm
40 607	W 150 dolly trolley	all K 470 and K 450 models with outside dimensions 600 × 400 mm
40 608	W 150 dolly trolley	all K 470 and K 450 models with outside dimensions 800 × 600 mm
40 680	W 152 dolly trolley	all K 470 and K 450 models with outside dimensions 800 × 600 mm
40 738	Add-on castors	all K 470 and K 450 models, ideal for outside length 800 – 1000 mm
40 739	Trolley, removable	all K 470 and K 450 models with length 600 – 800 mm
40 741	Clip-On fixed castors	all K 470 and K 450 models from size 550 × 350 mm
40 742	Clip-On swivel castors	all K 470 and K 450 models from size 550 × 350 mm
40 830 ¹⁾	Lock set	only identical locks in one set, fits all boxes designed to be equipped with locks
40 831 ¹⁾	Lock set	complete series of identical locks, fits all boxes designed to be equipped with locks
40 832 ²⁾	Lock set	only identical locks in one set, fits all boxes designed to be equipped with locks
40 833 ²⁾	Lock set	complete series of identical locks, fits all boxes designed to be equipped with locks
40 834 ²⁾	Spring anti-opening feature	compatible with Comfort fastener
46 789	TSA shackle lock	all K 470 and K 450 models
46 989	Shackle lock	all K 470 and K 450 models

¹⁾ Compatible with Classic fastener, see explanation on page 23 ²⁾ Compatible with Comfort fastener, see explanation on page 23

Possible combinations

Order No.	Description	40 626	40 627	40 628	40 730	40 735 40 736	40 864, 40 865 40 866
		Attaché insert	Toolbag	Box for small components	Adjustable divider panel system	Pick 'n Pluck foam set	Alu divider panel system
40 626	Attaché insert	-	-	-	✓	✓	-
40 627	Toolbag	-	-	-	✓	✓	-
40 628	Box for small components	-	-	-	✓	✓	-
40 730	Adjustable divider panel system	✓	✓	✓	-	-	-
40 735 40 736	Pick 'n Pluck foam set	✓	✓	✓	-	-	-
40 864 40 865 40 866	Alu divider panel system	-	-	-	-	-	-

Note: Combinations depend on the box heights. In some cases, it may be necessary, e. g. to shorten parts of the adjustable divider panel system or to leave out a layer of the Pick 'n Pluck foam set.

K 470 special accessories



Embossed plates (Fig. 1)
→ To be attached to containers, with embossing in DIN font, capital letters, 20 mm font height, single and multiple lines.

Embossing (Fig. 2)
→ In DIN font, capital letters, 20 mm font height, single and multiple lines.

Label frame (Fig. 3)
→ In various sizes in accordance with German industrial standard or in special sizes.

Armoured clasp (Fig. 4)
→ Designed to be equipped with lead seal and shackle lock.
→ For the use of locks with a shackle diameter of 8 mm.

Self-adhesive labels
→ In various sizes/colours/fonts, also available in non-removable design on request.

Examples of applications

From the South Pole to the Equator – ZARGES boxes are ideal for all applications.



1 + 1 = 1

The new two-part transportation system – K 470 Plus!

ZARGES
INNOVATION
2008



ZARGES
INNOVATION
2008

➔ The new packaging concept from ZARGES

The K 470 Plus represents a new ZARGES packaging concept: a two-part transportation system consisting of a top and bottom section. This allows you to combine elements of different heights, creating a whole new range of possibilities.

These containers are designed for the transportation and storage of heavy equipment.

The K 470 Plus is particularly suitable for use with equipment which is operated in the case, e.g. flash units, printers, measuring equipment etc.

The advantages:

- ➔ The equipment does not have to be lifted out of the case.
- ➔ Easy access to the equipment in the case during transport.
- ➔ Where it becomes necessary to remove the equipment from the case, the new system reduces the strain, as the top section can be removed.

Standard models supplied empty of content.

K 470 Plus

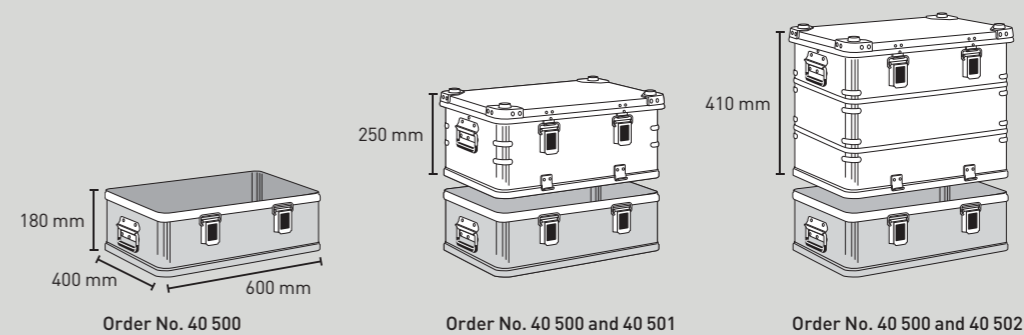


Details:

- Stackable aluminium universal container.
- Removable top section and lid with around seal.
- Lid with stainless steel hinge, two lid straps and around seal.
- Cast-aluminium stacking corners.
- Stackable with products on the K 470 series.
- Profile-section joints fully welded.
- Depending on height, beading all round and corner beading for extra stability of form.
- Equipped with the innovative new ZARGES Comfort fasteners.
- Can be secured with a plug lock, lead seals, spring anti-opening feature or padlock (max. shackle thickness 6 mm).
- New and innovative ergonomic heavy-duty sprung drop handles.
- Clearance dimensions approx. 30 mm less than inside dimensions.
- 2 basic dimensions (550 × 350 mm and 750 × 550 mm) available as standard, special sizes available on request.

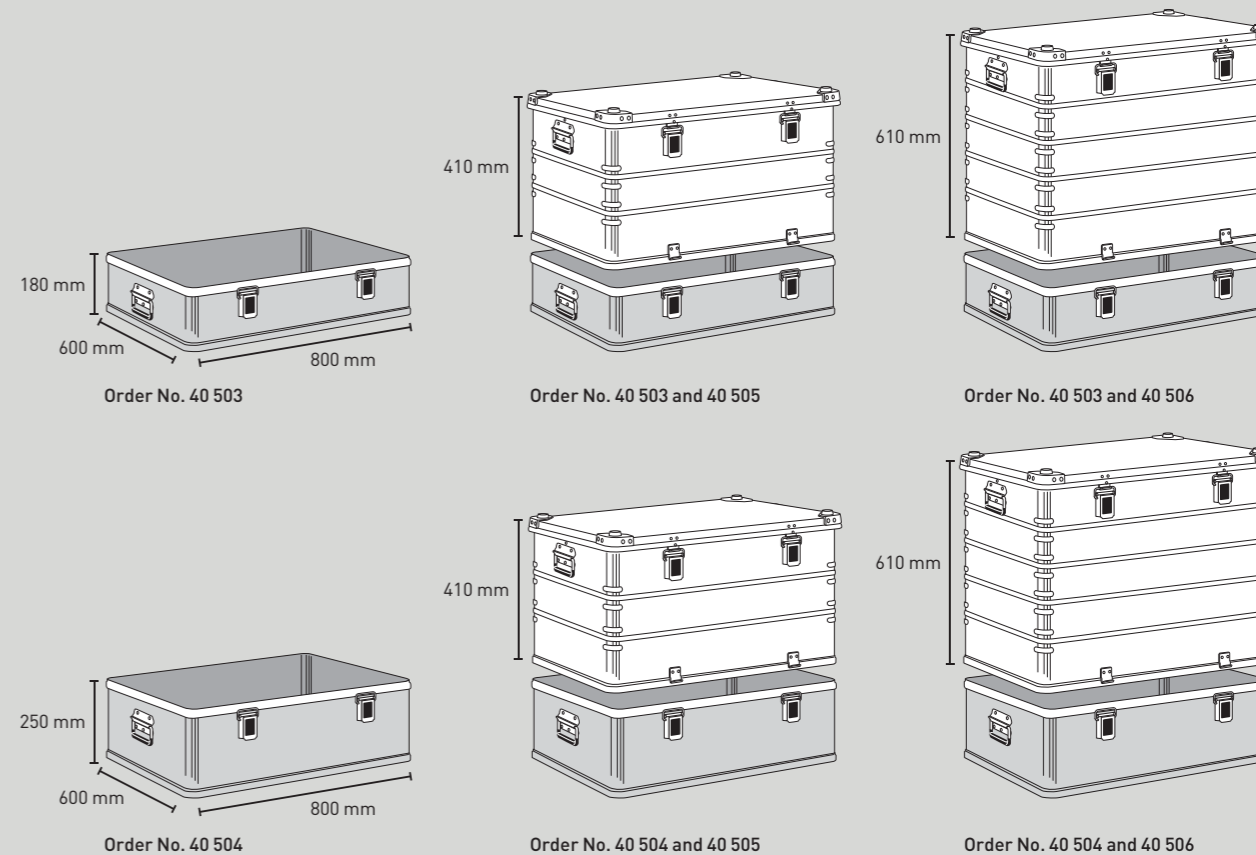
Accessories:

- See Accessories, from page 22.



K 470 Plus outside dimensions: 600 × 400 mm

Order No.	Description	Inside dimensions (L × W × H, approx. mm)	Outside dimensions (L × W × H, approx. mm)	Volume (approx. l)	Weight (approx. kg)
40 500	Bottom section	550 × 350 × 150 mm	600 × 400 × 180 mm	29	2.6
40 501	Top section	550 × 350 × 220 mm	600 × 400 × 250 mm	42	4.0
	Total height with bottom section 150 mm: 370 mm				
40 502	Top section	550 × 350 × 380 mm	600 × 400 × 410 mm	73	4.7
	Total height with bottom section 150 mm: 530 mm				



K 470 Plus outside dimensions: 800 × 600 mm

Order No.	Description	Inside dimensions (L × W × H, approx. mm)	Outside dimensions (L × W × H, approx. mm)	Volume (approx. l)	Weight (approx. kg)
40 503	Bottom section	750 × 550 × 150 mm	800 × 600 × 180 mm	62	4.8
40 504	Bottom section	750 × 550 × 220 mm	800 × 600 × 250 mm	91	5.5
40 505	Top section	750 × 550 × 380 mm	800 × 600 × 410 mm	157	8.6
	Total height 530 and 600 mm respectively				
40 506	Top section	750 × 550 × 580 mm	800 × 600 × 610 mm	240	10.5
	Total height 730 and 800 mm respectively				

K 450 shipping case

K 450 shipping case



- Stackable aluminium universal container.
- Lid with stainless steel hinges and foamed seal all round.
- Grey stacking corners of impact-resistant plastic.
- Edge, lid and base profile frames made of solid profile sections.
- Profile-section joints fully welded.
- Corner beads for additional dimensional stability.
- Snap fasteners. Can be secured with a plug lock, lead seals or a padlock (max. shackle thickness 6 mm).
- Ergonomic heavy-duty sprung drop handles.
- Clearance dimensions approx. 30 mm less than inside dimensions.
- Matched to pallet dimensions according to DIN 15 141.

Order No.	see No.	Inside dimensions (L × W × H, approx. mm)	Outside dimensions (L × W × H, approx. mm)	Contents (approx. l)	Weight (approx. kg)
40 720	1	350 × 250 × 310	400 × 300 × 340	27	3.0
40 721	2	550 × 350 × 220	600 × 400 × 250	42	4.7
40 722	3	550 × 350 × 310	600 × 400 × 340	60	4.9
40 723	4	550 × 350 × 380	600 × 400 × 410	73	5.2
40 724	5	750 × 350 × 310	800 × 400 × 340	81	6.1
40 725	6	750 × 550 × 380	800 × 600 × 410	157	7.5
40 716	7	750 × 550 × 580	800 × 600 × 610	240	8.9

Important note: Clearance dimensions approx. 30 mm less than inside dimensions (length and width).



Accessories:

Box for small components

- Box for small components with 21 insertable dividers made from PP.
- The sorting system for small items. Fits K 450 Order No. 40 721 to 40 724.
- Size: 430 × 330 × 60 mm

Order No. 40 628

- Further accessories from page 22.
- Possible combinations, see page 28.

Standard models supplied empty of content.

Tool / Rollbox K 412

Toolbox

Toolbox for tradesmen and hobbyists.

- Fold-down front.
- Five pull-out plastic inner compartments.
- One large compartment.
- Wide strip hinge.
- 2 snap fasteners.
- Case corners mounted on lid.
- Comfortable flexible carrying handle.



Order No.	Inside dimensions (L × W × H, approx. mm)	Outside dimensions (L × W × H, approx. mm)	Weight (approx. kg)
40 758	410 × 250 × 230	445 × 260 × 255	3.2

K 412 Rollbox

Whether you are an exhibition stand builder, a photographer, a traveller, a travelling salesman, a craftsman, an amateur model builder or a collector – let the functional ZARGES rollbox take the weight off your hands!

- Rolling aluminium universal container.
- With two wheels integrated in one end face.
- Ergonomic heavy-duty sprung drop handles.
- Lid with continuous stainless steel hinge and foamed seal all round.
- Can be stacked safely and centred.
- Snap fasteners with plug locks. Can be additionally secured with lead seals or a padlock (max. shackle thickness 6 mm).

Accessories:

Shackle lock (Fig. 1)

→ **Order No. 46 989**

TSA shackle lock (Fig. 2)

→ **Order No. 46 789**



Order No.	Inside dimensions (L × W × H, approx. mm)	Outside dimensions (L × W × H, approx. mm)	Contents (approx. l)	Weight (approx. kg)
40 851	910 × 365 × 375	950 × 400 × 410	124	9.0
40 852	740 × 365 × 375	780 × 400 × 410	100	7.5

Important note: Clearance dimension for rollboxes approx. 40 mm less than inside dimensions (length and width). Special sizes on request.

Standard models supplied empty of content.

K 415 Mobile Box – the innovative transport solution

The light and sturdy packaging solution for mobile applications.

ZARGES
INNOVATION
2008



ZARGES
INNOVATION
2008

➔ The integrated pull-out handle and castors make the K 415 a practical travelling companion.

- ➔ Stackable aluminium universal container.
- ➔ Integrated pull-out handle.
- ➔ Equipped with integrated castors with roller bearings, Ø 70 mm.
- ➔ Lid with stainless-steel hinges and all-round seal.
- ➔ Stacking corners in black plastic.
- ➔ Edge, lid and base profile frames made of solid profile sections.
- ➔ Profile-section joints fully welded.
- ➔ Corner beads for additional dimensional stability.
- ➔ Equipped with the new ZARGES Comfort fasteners.
- ➔ Fasteners with plug lock as standard.
- ➔ Can be secured with lead seals or a padlock (max. shackle thickness 6 mm).
- ➔ New ergonomic heavy-duty sprung drop handles.
- ➔ Equipped as standard with detachable, water-repellent inner bag made of polyester; completely sealable with all-round zip fastener and welded seams.
- ➔ Can carry up to 35 kg total weight.



Order No.	Inside dimensions (L × W × H, approx. mm)	Clear inside dimensions* (L × W × H, approx. mm)	Outside dimensions (L × W × H, approx. mm)	Volume (approx. l)	Weight (approx. kg)
40 855	620 × 490 × 350 mm	590 × 430 × 350 mm	655 × 545 × 380 mm	106	8.6
40 856	740 × 490 × 350 mm	710 × 430 × 350 mm	775 × 545 × 380 mm	127	9.5
40 857	740 × 490 × 450 mm	710 × 430 × 450 mm	775 × 545 × 480 mm	163	10.1

*The clear inside dimensions already allow for the clearance and the pull-out handle, which retracts inside the case. The outside dimensions include the castors.

Accessories:



1



2



3



4

Attaché insert (Fig. 1)

- ➔ Description, see page 22.
- ➔ **Order No. 40 626**

Toolbag (Fig. 2)

- ➔ Description, see page 22.
- ➔ **Order No. 40 627**

Shackle lock (Fig. 3)

- ➔ Description, see page 23.
- ➔ **Order No. 46 989**

TSA shackle lock (Fig. 4)

- ➔ Description, see page 23.
- ➔ **Order No. 46 789**

Standard models supplied empty of content.

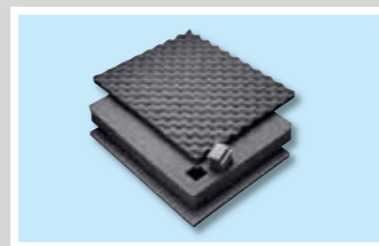
NEW! K 405 Transport box

K 405 Transport box



An extremely lightweight transport and storage box made of aluminium.

- Snug fit hinged lid.
- Robust corner joints and aluminium corner reinforcements.
- Beading for increased stability.
- Tension locks with protection against bursting open, lockable, with two keys.
- Ergonomic heavy-duty sprung drop handles.
- Available in three different sizes.
- Can be placed one inside the other when empty for space-saving storage.



Accessories:

Pre-cut soft PU foam inlay

- Sheet thicknesses in the set
2 sheets each of 30 mm and
3 to 6 sheets of 50 mm
- Base foam PU approx. 10 mm
- Nubby foam insert in the lid
25 mm
- Fits 43 815
Order No.: 43 845
- Fits 43 816
Order No.: 43 846
- Fits 43 817
Order No.: 43 847

Order No.	see No.	Inside dimensions (L x W x H, approx. mm)	Outside dimensions (L x W x H, approx. mm)	Contents (approx. l)	Weight (approx. kg)
43 815	1	480 x 350 x 250	490 x 380 x 255	42	2.6
43 816	2	550 x 400 x 300	560 x 430 x 305	66	3.5
43 816	3	670 x 460 x 400	680 x 490 x 405	123	4.8



Standard models supplied empty of content.

Collapsible containers and RetouЯ® system containers



RetouЯ® collapsible containers for less-than-cargo lots

Collapsible reusable packaging in aluminium alloy.

- Can be collapsed quickly and easily by one person.
- Simple handling due to interlocking profiles with connection locking device on the floor pan and side parts.
- Side protection profiles.
- High degree of stability through three sets of profiles on the outside walls.
- Folding ratio 1:3.
- Lid securely fastened to rear wall by swing-type hinge.
- End-walls and lid with additional, externally mounted stiffening profiles.
- Self-locking fasteners, suitable for lead seals and/or locking with a shackle lock.
- Stacking corners.
- Suitable for use on roller conveyors.
- 15 mm free space when collapsed (e.g. for interior fittings).



Important note:
RetouЯ® collapsible containers can also be supplied as UN-approved* hazardous goods packaging for an additional charge.
For details, see page 63.
* Tested: composite packaging UN 4B

Order No.	Inside dimensions (L x W x H, approx. mm)	Outside dimensions (L x W x H, approx. mm)	Size when folded H (approx. mm)	Contents (approx. l)	Weight (approx. kg)
45 070	730 x 530 x 570	800 x 600 x 600	145	221	21.0
45 073	1130 x 730 x 740	1200 x 800 x 900	287	610	62.0

Important note: Aluminium pallets and aluminium side protection profiles are special equipment. Order Number 45 073: Standard delivery with wooden pallet and wooden side protection profiles. Dimensions and weight incl. flat wooden pallet. Special sizes on request.

Special features of collapsible containers

Order No.	More detailed description
45 070 + 45 073	Long front wall folds down, loading also possible from the front
45 073	Flat wooden pallet as standard equipment

RetouЯ® collapsible containers for liners

Collapsible aluminium container for transporting and storing liquid and high-viscosity substances.

- Highest levels of quality and hygiene with minimum effort required for cleaning.
- Can be collapsed quickly and easily by one person.
- Stacking corners.
- Can be stacked up to 3 high when filled and up to 7 high when collapsed.
- Suitable for use on roller conveyors.
- Outlet aperture integrated in side wall or pallet.
- Accessories such as liners, filling and draining bungs etc. to suit the specific content and application. Inquire for details.
- Suitable dolly trolleys on page 49.
- Can be used in clean rooms with particularly stringent hygiene requirements.
- Suitable for use in the food, cosmetics and pharmaceutical industries, chemical engineering and biochemistry.



Order No.	Inside dimensions (L x W x H, approx. mm)	Outside dimensions (L x W x H, approx. mm)	Size when folded H (approx. mm)	Contents (approx. l)	Weight (approx. kg)
45 075	730 x 530 x 570	800 x 600 x 720	260	200	26.0
45 076	1145 x 745 x 590	1200 x 800 x 820	400	500	60.0
45 077	1145 x 945 x 930	1200 x 1000 x 1140	400	1000	75.0

Standard models supplied empty of content.



Type A interior fittings

- Lid: self-adhesive nubby foam sheet, 20 mm thick.
- Bottom section: removable foam sheets in various thicknesses with good cushioning effect.
- Can be cut out as required with a sharp knife.

Order No.	Fits Alu Case Order No.	Thickness of the foam sheet (bottom section)
41 704	40 763	2 × 20 mm 1 × 40 mm
41 705	40 764	2 × 40 mm 1 × 20 mm
41 706	40 766	3 × 40 mm 1 × 20 mm



Type B interior fittings

- Lid: self-adhesive nubby foam sheet, 20 mm thick.
- Bottom section: self-adhesive foam groove-cutting grid, plastic plate for compartments which can be divided up as required, universally adjustable, smooth floor sheet.
- A set consists of: Nubby cover plate, smooth bottom sheet 20 mm thick, 2 longitudinal and 2 end-wall components with embossing, 1 transverse dividing wall with embossing and 2 smooth longitudinal divider panels (which can be cut to suit your requirements).

Order No.	Fits Alu Case Order No.
41 701	40 763
41 702	40 764
41 703	40 766

Accessories, Type B interior fittings

Order No.	Fits Alu Case Order No.
Transverse dividing wall with grid	
309 580	40 763
309 581	40 764
309 582	40 766
Smooth divider panel	
309 583	40 763
309 584	40 764
309 585	40 766

The robust ZARGES Alu Cases are ideal for transporting and packaging a wide variety of goods. Ideal for presenting sample collections, as safe packaging for valuable or sensitive goods or as service tool cases for service technicians.

Stable, lockable, protected against dust, splashwater and equipped with ergonomic carrying handles, their distinguishing features are functionality, long service life and timeless design.

- Aluminium case, anodised, for varied applications.
- Corrosion-resistant.
- Smooth surfaces.
- Corner reinforcements with case corner pieces.
- Comfortable carrying handle.
- Tension locks with protection against bursting open.
- Hinged lid with all-round seal, therefore extensively dust- and splashwater-tight.
- Clearance dimensions approx. 20 mm less than inside dimensions (length and width).



Standard models supplied empty of content.

Order No.	see No.	Inside dimensions (L × W × H, approx. mm)	Outside dimensions (L × W × H, approx. mm)	Contents (approx. l)	Weight (approx. kg)
40 765	1	360 × 300 × 140	370 × 330 × 145	15	1.8
40 763	2	470 × 350 × 120	480 × 380 × 125	20	2.2
40 764	3	530 × 330 × 140	540 × 360 × 145	25	2.5
40 766	4	470 × 350 × 170	480 × 380 × 175	28	2.7

Important note: Clearance dimensions approx. 20 mm less than inside dimensions (length and width). Special sizes on request.



Alu Case in special design, special orders only.



Important note:
Alu Cases for the transportation of hazardous goods available at an extra charge.
For further details, see page 58.
* Tested: composite packaging UN 4B

P472 case



The ZARGES hard-sided case provides the highest degree of protection for sensitive items.

- Unbreakable, stackable hard-sided case made from high quality polypropylene (PP).
- The ideal transport and storage case for highly sensitive items, e.g. electronic and optical devices, measuring instruments, medical technology and biotechnology apparatus, etc.
- Available in more than 30 different sizes which hold up to 228 l.
- Larger models with castors and pull-out handle for easier handling.
- Water- and dust-tight thanks to neoprene seal, to degree of protection IP 67 in most models.
- All cases fitted as standard with automatic pressure compensation valve.
- Can withstand temperatures from -23 °C to +99 °C, resistant to many aggressive substances such as acids and alkalis.
- All metal parts on handles and fasteners made from corrosion-resistant stainless steel.
- Standard colour black, also available in yellow, silver-grey, sand, olive green and orange depending on case type (minimum order quantities apply, other colours on request).



Model 1450 with frame insert

Certification:

- Air Transportation Association
- US Military Specifications MIL-C-4150 J
- NATO (NSN)-approved

Standard models supplied empty of content.



Robust design

The special design, an open-cell core and tough wall construction protect the Peli cases in spite of their low weight. The many heavy-duty reinforcement ribs offer additional protection. Shocks are absorbed evenly, keeping your equipment safe and sound.



Automatic pressure compensation valve

The automatic pressure compensation valve ensures that pent-up air can escape, but no water can enter. This means that the Peli cases are water-tight and can still be opened easily even after a change in pressure.



Fasteners

The patented design of the two-stage fasteners makes for easy opening and closing of the case with little effort required.

Model	Inside dimensions (L x W x H, approx. mm)	Outside dimensions (L x W x H, approx. mm)	Contents (approx. l)	Weight without insert (approx. kg)	Order No. empty	Order No. with foam	Order No. with divider
1080	325 x 249 x 43	349 x 278 x 65	3.5	1.3	For details, see page 44.		
1120	187 x 124 x 77	209 x 166 x 90	1.8	0.5	46 800	46 801	-
1150	212 x 149 x 93	235 x 192 x 111	2.9	0.8	46 810	46 811	-
1200	238 x 184 x 103	270 x 246 x 123	4.5	1.2	46 820	46 821	-
1300	238 x 184 x 155	270 x 246 x 174	6.8	1.4	46 830	46 831	-
1400	305 x 230 x 131	340 x 295 x 152	9.2	1.8	46 840	46 841	-
1430	344 x 146 x 297	430 x 244 x 341	18.0	3.0	46 730	46 731	46 732
1440 *	434 x 190 x 406	500 x 305 x 457	33.6	6.6	46 720	46 721	46 722
1450	376 x 263 x 152	406 x 330 x 174	15.0	2.5	46 850	46 851	46 852
1470	400 x 268 x 95	424 x 332 x 111	10.2	1.7	46 860	46 861	-
1490	454 x 292 x 105	494 x 354 x 119	13.9	2.3	46 880	46 881	-
1495	479 x 333 x 97	549 x 438 x 124	15.5	3.3	For details, see page 44.		
1500	432 x 290 x 155	470 x 357 x 176	19.4	2.9	46 890	46 891	46 892
1510 *	514 x 289 x 193	559 x 351 x 229	28.6	5.1	46 770	46 771	46 772
1520	454 x 324 x 171	486 x 392 x 192	25.2	3.6	46 900	46 901	-
1550	481 x 367 x 197	525 x 436 x 217	34.8	4.8	46 910	46 911	46 912
1560 *	518 x 392 x 229	560 x 455 x 265	46.5	6.9	46 790	46 791	46 792
1600	552 x 427 x 200	616 x 494 x 220	47.1	5.9	46 920	46 921	46 922
1610 *	550 x 422 x 268	627 x 497 x 303	65.9	9.1	46 930	46 931	46 932
1620 *	560 x 432 x 320	630 x 492 x 352	77.4	11.1	46 940	46 941	46 942
1630 *	703 x 533 x 394	794 x 615 x 444	147.0	14.1	46 680	46 681	46 682
1640 *	602 x 610 x 353	691 x 699 x 414	130.0	15.4	46 710	46 711	46 712
1650 *	736 x 454 x 267	781 x 520 x 295	89.2	13.3	46 950	46 951	46 952
1660 *	740 x 525 x 448	800 x 581 x 479	174.0	15.5	46 980	46 981	46 982
1690 *	762 x 635 x 407	847 x 722 x 463	197.0	15.4	46 690	46 691	46 692
0340	457 x 457 x 445	518 x 519 x 489	93.0	10.9	46 740	46 741	46 742
0350 **	508 x 508 x 459	569 x 571 x 540	118.0	11.8	46 750	46 751	46 752
0370 **	610 x 610 x 610	673 x 673 x 642	227.0	14.5	46 760	46 761	46 762
1700 *	910 x 351 x 133	968 x 452 x 155	42.5	7.3	46 960	46 961	-
1720 *	1067 x 343 x 133	1127 x 406 x 156	48.6	7.6	46 780	46 781	-
1730 *	863 x 609 x 317	952 x 689 x 365	164.0	13.6	46 650	46 651	-
1750 *	1283 x 341 x 133	1343 x 443 x 154	58.2	10.7	46 970	46 971	-
1780	1066 x 559 x 383	1140 x 643 x 419	228.0	17.4	46 660	46 661	-

Important note: The models marked * are equipped with two castors for easier transport. Models 1440, 1510, 1560, 1610, 1620, 1630, 1650, 1660 and 1690 also have a pull-out handle. Standard colour black, special colours on request. Model 0340 equipped with 4 castors and pull handle. Frame insert for many models from 1120 to 1550 can be supplied. Peli 1080, 1490 and 1495 dimensions only, for details, see the following pages.

**Matching set of add-on castors (2 fixed and 2 swivel castors) available, Order No. 46 757 (not included in the scope of delivery).

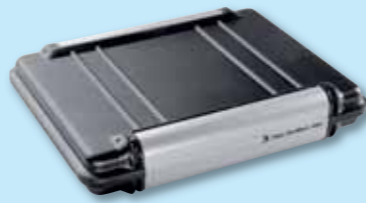
P 472 Case – A case with unlimited possibilities

P 472 Case laptop case for Notebooks from 12" bis 17"

P 472 1080 laptop case for Notebooks up to 12"

- Fits Notebooks up to 312 mm × 236 mm × 36 mm or documents 216 mm × 279 mm or DIN A4.
- The moulded lining made from padded foam (Order No. 46 672) protects Notebooks against impact and scratches.

Order No.	Description	Inside dimensions (L × W × H, approx. mm)	Outside dimensions (L × W × H, approx. mm)	Contents (approx. l)	Weight (approx. kg)
46 671	with Pick 'n Pluck foam, black	325 × 249 × 43	349 × 278 × 65	3.5	1.3
46 672	with foam lining, black	325 × 249 × 43	349 × 278 × 65	3.5	1.3



P 472 1490 laptop case for Notebooks up to 15"

- With computer base and lid insert, shoulder strap and lockable fasteners.

Order No.	Description	Inside dimensions (L × W × H, approx. mm)	Outside dimensions (L × W × H, approx. mm)	Contents (approx. l)	Weight (approx. kg)
46 880	empty	454 × 292 × 105	494 × 354 × 119	13.9	2.3
46 881	with Pick 'n Pluck foam, black	454 × 292 × 105	494 × 354 × 119	13.9	2.5
46 882	Computer Case Deluxe	454 × 292 × 105	494 × 354 × 119	13.9	2.2



P 472 1495 CC1 Deluxe Notebook computer case.

- With lid separator, nylon-padded laptop sleeve and accessories compartment, insert with impact protection for computer and shoulder strap made from ballistic nylon. Lock with 3-digit combination included in the scope of delivery.



P 472 1495 CC2 standard Notebook computer case.

- With compact Pick'n Pluck™ foam insert, lid separator and shoulder strap made from ballistic nylon.

Order No.	Description	Inside dimensions (L × W × H, approx. mm)	Outside dimensions (L × W × H, approx. mm)	Contents (approx. l)	Weight (approx. kg)
46 700	empty	479 × 333 × 97	549 × 438 × 124	15.5	3.3
46 701	with Pick 'n Pluck foam	479 × 333 × 97	549 × 438 × 124	15.5	3.8
46 702	CC1 Deluxe Notebook computer case	479 × 333 × 97	549 × 438 × 124	15.5	3.3
46 704	CC2 standard Notebook computer case	479 × 333 × 97	549 × 438 × 124	15.5	3.3



Accessories

- Pick 'n Pluck foam set made from pre-cut PU foam.
- Divider set, padded, divider panels attached with Velcro, adjustable.
- Individual foam inserts manufactured to customer specifications. Details on request.
- Lid insert for better organisation.
- Shackle lock, **Order No. 46 989**
- Dessicant, **Order No. 46 988**
- Customer specific lettering on request.



Standard models supplied empty of content.

P 472 Case – A case with unlimited possibilities

Installation frame

- Peli offers a practical solution for the installation of customer-specific cover plates in Peli protector cases: We supply the installation frame, which is attached below your control panel on specially cast clamping devices on the walls of the case. A neoprene O-ring seal protects the control panel so that the case remains waterproof even when the lid is open. The predrilled holes and stainless steel screws allow simple, stable and extremely precise adjustment of the frame to your specific requirements.



New

P 472 1440 top loader case.

- Extra-long, pull-out metal handle.
- Rubber-coated handles on the top and side for maximum comfort.
- Outside dimensions 500 mm × 305 mm × 457 mm.



P 472 1630 transport case.

- With a storage space of 147 litres, the 1630 offers a wide range of possibilities for the storage and transportation of many different articles (including large, sensitive electronic equipment).
- Pull-out handle.
- Two extra-wide handles that can be gripped with two hands.
- Outside dimensions 794 mm × 615 mm × 444 mm.



P 472 1640 transport case.

- With the 130 litre capacity of the 1640, you can even store and transport a computer tower (standard size).
- Long pull-out handle.
- Two extra-wide handles that can be gripped with two hands.
- Outside dimensions 691 mm × 699 mm × 414 mm.



NEW! New, product-specific features

New:

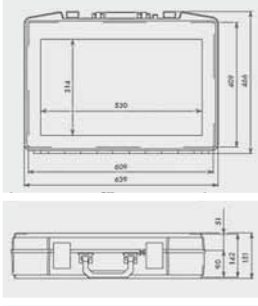
- Polyurethane castors with stainless steel ball bearings (on some models) for longer service life and effortless transportation.

New:

- Reinforced attachment device made from stainless steel for the padlock offers greater stability and protection against unauthorised opening and theft.



P 402-Case



Sturdy injection-moulded cases made from ABS (acrylonitrile-butadiene-styrene) or SB (styrene-butadiene).

- High (impact) resistance and surface hardness (scratch-resistance).
- Virtually unbreakable, dimensionally stable, low weight.
- Stackable and palletisable.
- Ergonomic carrying handle.
- Soft-Click fasteners.
- Heat-resistant from - 30 °C to + 80 °C.
- UV-resistant and cadmium-free.
- The material from which the case is made is environmentally friendly and 100 % recyclable.
- The division of the case - 1/4 lid, 3/4 bottom section - allows optimum utilisation of its volume.

- Well suited for foam inserts. The cases offer comprehensive possibilities for protecting their content - your product - with foam inserts, deep inserts or cover plates.
- Individual design options with the use of silk-screen printing, hot-stamp printing or inmould labelling.
- ABS injection-moulded cases from Plaston have proved their worth in millions of tough applications.

Model	Order No. black	Order No. blue	Order No. red	Inside dimensions (L × W × H, approx. mm)	Outside dimensions (L × W × H, approx. mm)	Volume (approx. l)	Weight (approx. kg)
Type 31*	43 752	43 753	43 754	384 × 219 × 47 + 17	384 × 290 × 71	5.1	0.9
Type 51*	43 755	43 756	43 757	372 × 249 × 66 + 17	394 × 293 × 91	7.7	1.1
Type 81	43 758	43 759	43 760	420 × 276 × 78 + 22	444 × 320 × 108	11.6	1.3
Type 111	43 761	43 762	43 763	440 × 310 × 78 + 22	464 × 354 × 108	13.6	1.5
Type 126	43 764	43 765	43 766	530 × 375 × 95 + 35	557 × 422 × 139	25.8	2.5
Type 146	43 767	43 768	43 769	609 × 409 × 90 + 51	639 × 466 × 151	35.1	3.5
Type 156	43 770	43 771	43 772	609 × 409 × 150 + 51	639 × 466 × 211	50.0	3.9

* Type 31 only available in units of 10 cases, Type 51 in units of 6 cases.

Standard models supplied empty of content.

Service case

This always helps you to make a good impression.

- Aluminium hard-sided case, anodised, for a wide range of applications.
- Plastic protective strips all round.
- Integral rubber seal to protect against dust and water splashes.
- Riveted wide strip hinge.
- Two locks with protection against bursting open.
- Comfortable carrying handle.



Order No.	Inside dimensions (L × W × H, approx. mm)	Outside dimensions (L × W × H, approx. mm)	Volume (l)	Weight (kg)
40 873	490 × 330 × 130 (90 / 40)*	505 × 365 × 130 (90 / 40)*	20	2.8
40 872	490 × 330 × 160 (90 / 70)*	505 × 365 × 160 (90 / 70)*	24	2.9
40 874	650 × 455 × 190 (120 / 70)*	665 × 490 × 190 (120 / 70)*	55	4.5

* Height (H) divided into bottom section / top section.

Accessories

Order No.	Designation	Compatible with	dimensions
41 710	Pick 'n' Pluck foam set 1	40 873	Outside dimensions (L × W × H): 490 × 330 × 120
41 711	Pick 'n' Pluck foam set 2	40 872	Outside dimensions (L × W × H): 490 × 330 × 150
41 712	Pick 'n' Pluck foam set 3	40 874	Outside dimensions (L × W × H): 650 × 455 × 180
40 626	Attaché insert	40 872 - 40 874	Outside dimensions (L × W): 430 × 290
40 627	Toolbag	40 872 - 40 874	Outside dimensions (L × W): 435 × 260

Attaché case

- Aluminium hard-sided case, anodised, for varied applications.
- Plastic protective strips all round.
- Integral rubber seal to protect against dust and water splashes.
- Riveted wide strip hinge.
- Two locks with protection against bursting open.
- Comfortable carrying handle.
- Chromium-plated, screwed-on combination lock.
- Scuff-resistant fabric lining.
- Attaché-style compartmentalisation.
- Lid stays open.



Order No.	Inside dimensions (L × W × H, approx. mm)	Outside dimensions (L × W × H, approx. mm)	Volume (l)	Weight (kg)
41 841	490 × 330 × 130 (90 / 40)*	505 × 365 × 130 (90 / 40)*	20	3.1

* Height (H) divided into bottom section / top section.

Standard models supplied empty of content.

Baskets

ZARGES baskets with slot-shaped holes are available in straight-sided and tapered design. Straight-sided baskets can be stacked one on top of the other, tapered baskets one inside the other.

K 250 basket (Fig. 1)

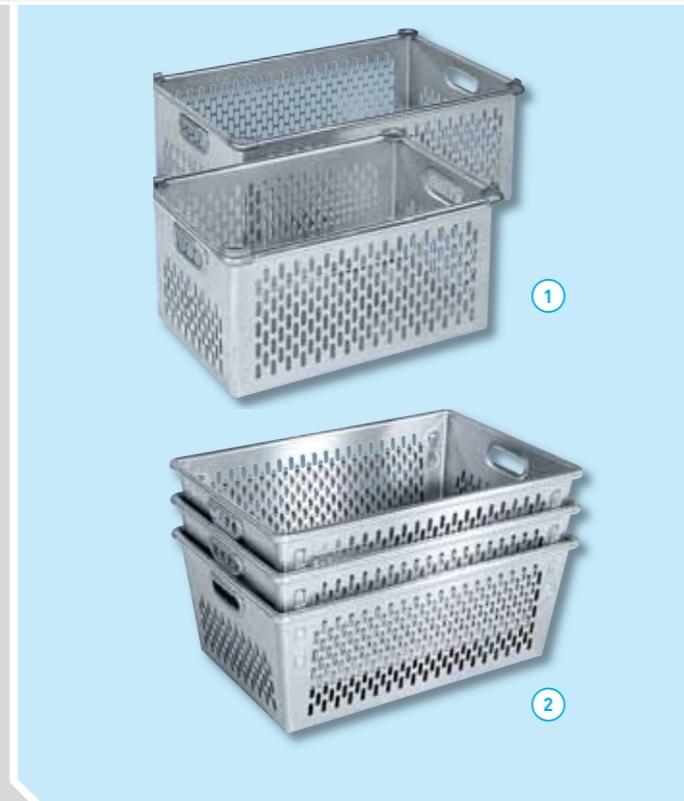
- Straight-sided design.
- Robust stacking brackets allow them to be stacked one on top of the other.
- Ergonomic grips in the end faces.
- Plastic skid bars. Plastic skid bars.

Order No.	Inside dimensions (L × W × H, approx. mm)	Outside dimensions (L × W × H, approx. mm)	Contents (approx. l)	Weight (approx. kg)
40 781	540 × 340 × 280	580 × 380 × 300	52	2.5
40 782	700 × 440 × 280	740 × 480 × 300	86	3.5

K 251 basket (Fig. 2)

- Tapered design.
- Can be stacked one inside the other.
- Ergonomic grips in the end faces.
- Plastic skid bars.

Order No.	Inside dimensions (L × W, approx. mm)	Outside dimensions (L × W, approx. mm)	Height (approx. mm)	Contents (approx. l)	Weight (approx. kg)
40 783	top: 700 × 445 bottom: 630 × 375	top: 740 × 485 bottom: 640 × 380	280	89	3.0



Boxes

ZARGES boxes are tried and tested transportation equipment, packaging and practical storage unit rolled into one. Some models are also suitable for use on conveyor belts or roller conveyors.

K 270 pharmaceuticals transport container (Fig. 1)

- Universal container made from aluminium, anodised.
- Smooth sides and base.
- Welded side wall.
- Drop handles.
- Special sizes on request.

Accessories:

- **Removable stacking lid** with predrilled holes for security seals, **Order No.: 48 014**

Order No.	Inside dimensions (L × W × H, approx. mm)	Outside dimensions (L × W × H, approx. mm)	Contents (approx. l)	Weight (approx. kg)
48 011	540 × 340 × 300	580 × 380 × 325	55	3.9

K 270 transport container (Fig. 2)

- Universal box made from aluminium.
- Edge and base profile frames made of solid profile sections, joints fully welded.
- Ergonomic grips in the end faces.
- Can be used on roller conveyors and conveyor belts.
- Coding strips for Destination Guide.
- Matched to pallet dimensions according to DIN 15 141.



Order No.	Inside dimensions (L × W × H, approx. mm)	Outside dimensions (L × W × H, approx. mm)	Contents (approx. l)	Weight (approx. kg)
40 551	720 × 540 × 400	760 × 580 × 425	155	5,3
40 552	720 × 540 × 300	760 × 580 × 325	117	4,6
40 553	720 × 540 × 200	760 × 580 × 225	77	4,2
40 554	540 × 340 × 300	580 × 380 × 325	55	3,0
40 555	540 × 340 × 200	580 × 380 × 225	37	2,5

Standard models supplied empty of content.

Dolly trolleys

When it comes to solving “weighty” transportation and storage problems, the highly manoeuvrable ZARGES dolly trolleys are indispensable, economical helpers.

Whether in the high or the low version, they literally make light work of handling and transporting heavy loads comprising individual or stacked ZARGES boxes, containers and baskets.

W 150 dolly trolley (Fig. 1)

- Aluminium chassis, low version.
- Adapted for the transport of K 270 aluminium containers or K 470 / K 450 cases.
- Running gear: 2 swivel and 2 fixed castors, Ø 125 mm, 40 mm wide, easy running, rubber wheels, “non-marking”, roller bearings, thread guards.

Order No.	For	Outside dimensions of container (L × W, approx. mm)	Weight (approx. kg)
40 607	K 270	580 × 380	5.1
	K 470 / K 450	600 × 400 or two cases: 400 × 300	
40 608	K 270	760 × 580	5.5
	K 470 / K 450	800 × 600	

W 152 dolly trolley (Fig. 2)

- Aluminium chassis, high version.
- For the transport of K 250 aluminium baskets, K 470 / K 450 cases and K 270 containers.
- Running gear: 2 swivel and 2 fixed castors, Ø 125 mm, 40 mm wide, easy running, rubber wheels, “non-marking”, roller bearings, thread guards.

Order No.	For	Outside dimensions of container (L × W, approx. mm)	Height (approx. mm)	Weight (approx. kg)
40 609	K 250	580 × 380 740 × 480	450	5.9
40 680	K 470 / K 450 K 270	800 × 600	450	6.2
		760 × 580		

W 154 heavy-load dolly trolley (Fig. 3)

- Welded aluminium profile-section construction.
- Castors (2 fixed and 2 swivel castor with brakes) made from polyamide, white.

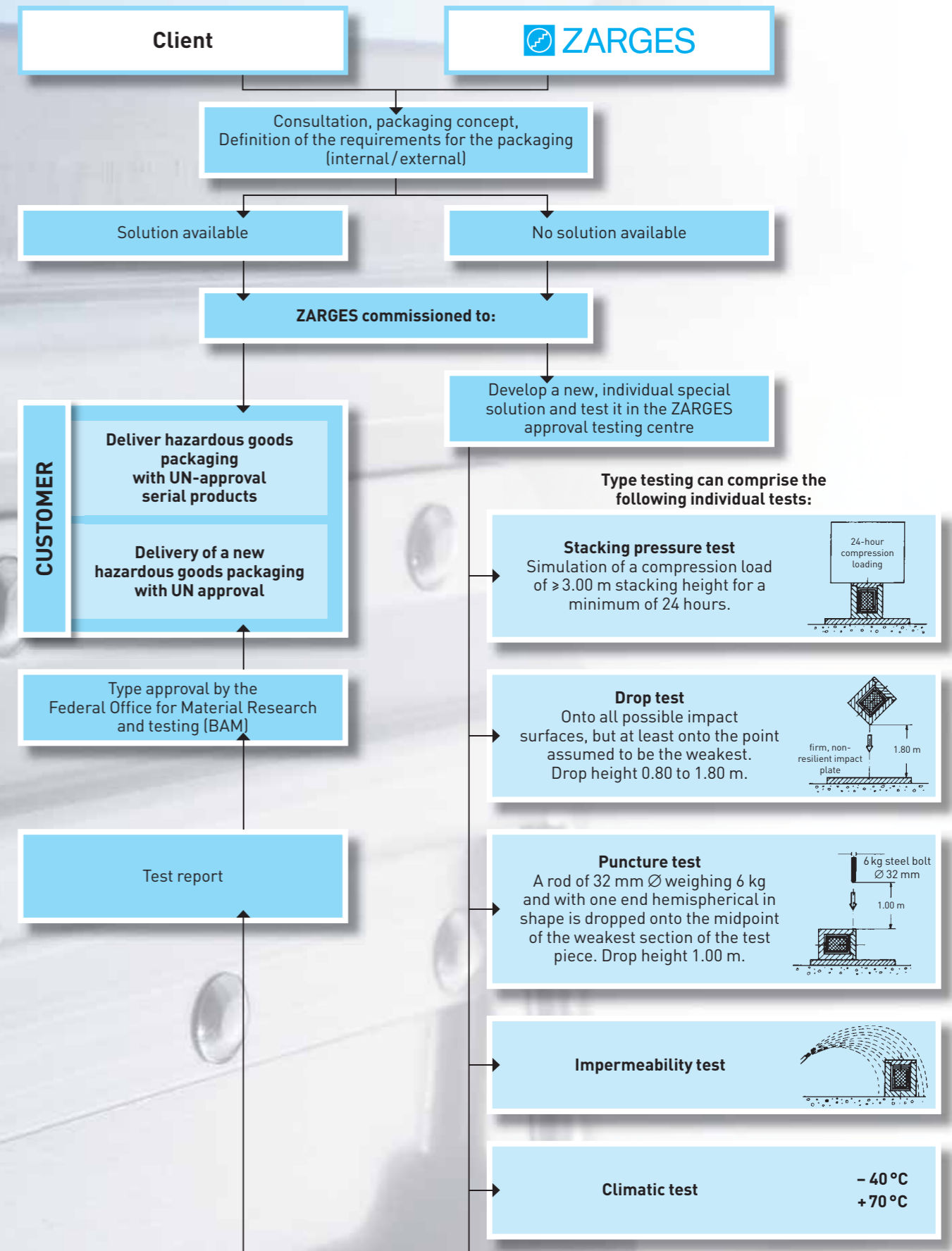
Order No.	Fits collapsible containers Order No.	Outside dimensions of container (L × W, approx. mm)	Max. load	Weight (approx. kg)
45 096	45 075 / 45 070	800 × 600	up to 300 kg	7.8
45 097	45 076 / 45 073 40 580	1200 × 800	up to 600 kg	15.9

Standard models supplied empty of content.



ZARGES hazardous goods packaging – tested safety

Solving your transport problems from A to Z



Basic principles

- Strict safety regulations are laid down by law for the packaging and transport of hazardous goods. Hazardous goods may only be transported in packaging that meets these criteria and is approved by the relevant authorities.
- Requirements with regard to packaging are defined by the Hazardous Goods Directive and other standards.
- For many years, ZARGES has been producing UN-approved packaging made from aluminium. They are approved as composite packaging (Code UN 4B, 4BU, 4BV, 4BW, 50B).

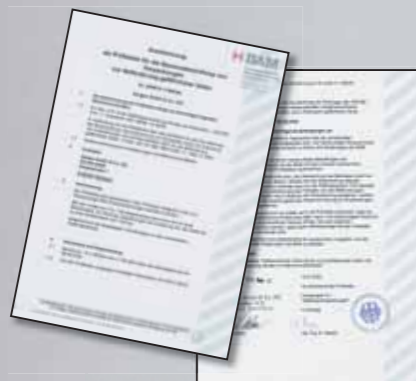
What we at ZARGES offer

Consultancy service: Information on legislation and directives. Advice on the classification of hazardous goods. Recommendations for suitable internal and external packaging (incl. padding/cushioning material). Compiling special solutions.

Testing: Design testing of external combination and composite packaging (aluminium/steel). ZARGES is an authorised inspection authority. Approvals issued by the Federal Office for Material Research and Testing (Bundesamt für Materialforschung und -prüfung – BAM).

Supply: External packaging in standard or special sizes with approval. Complete packaging solutions (composite packaging). Special solutions.

In its capacity as a test and inspection agency, ZARGES is authorised and able to test hazardous goods packaging and to apply for type approvals.



Marking

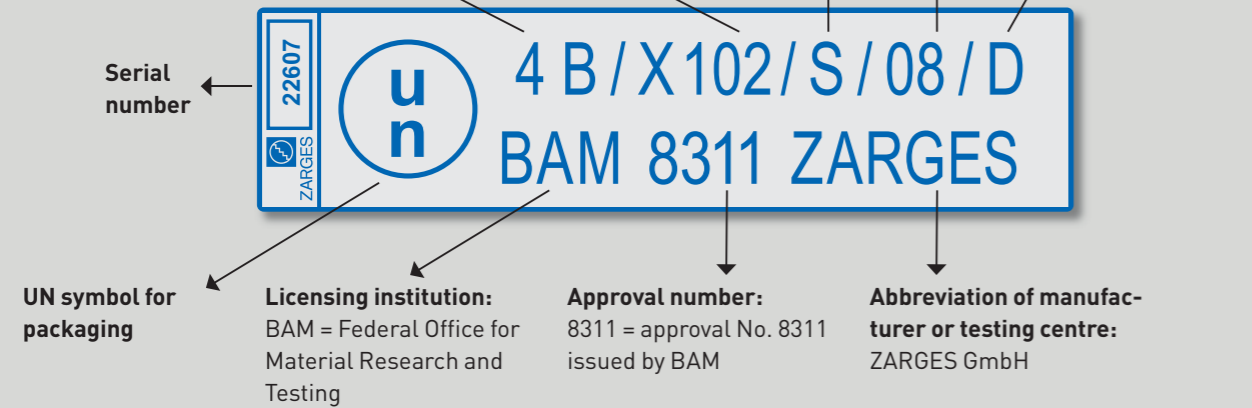
Packaging type and material:

4B = case made from aluminium
50B = large container made from aluminium (volume more than 450 litres)

Packaging group and gross weight:
X102 = VPGR. I, II and III, gross weight 102 kg

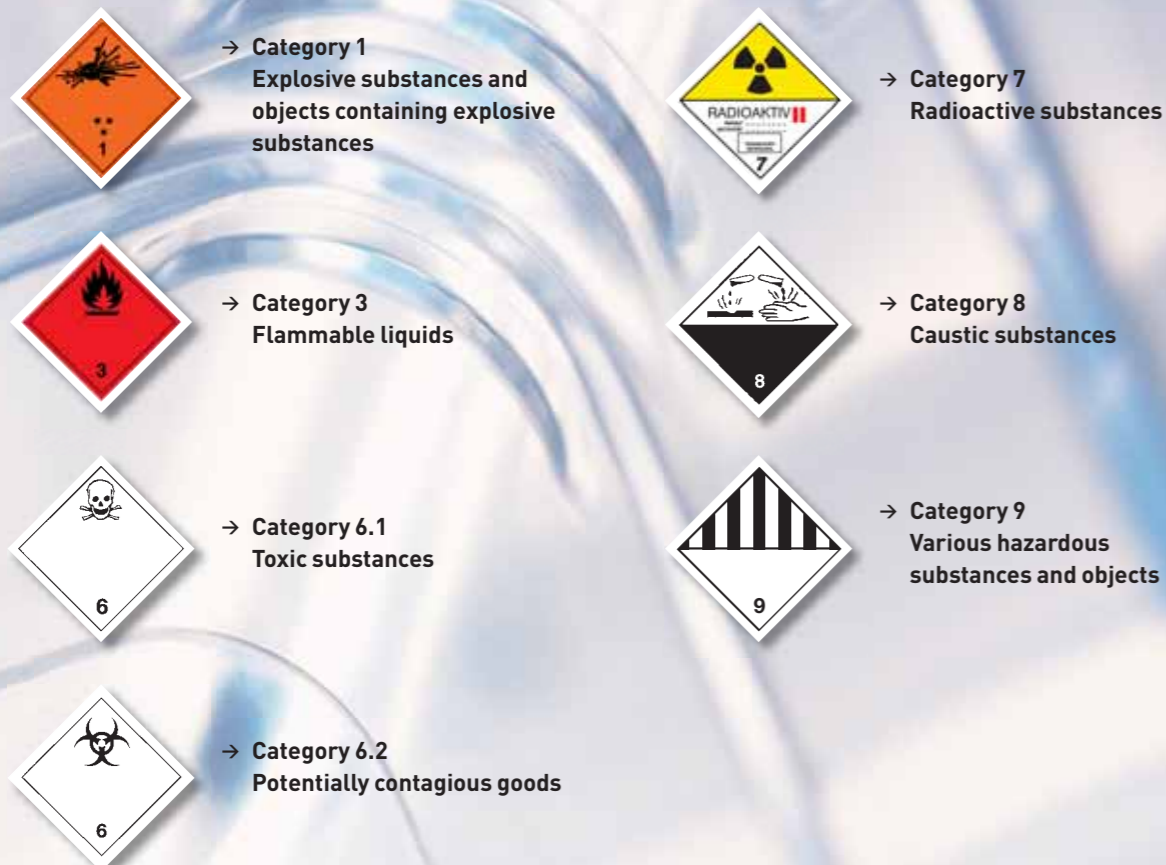
Material type:
S = solid material or internal packaging without hydraulic internal pressure testing

Year of approval was granted



In addition, shipments must be issued with hazard labels corresponding to the hazard category.

Labelling



BY container

Transport and storage containers of the Y series are especially suited to military applications. All container sizes are inter-stackable. The full product line is now available as packaging approved for the transportation and storage of hazardous goods.

Important note:
For further details of this series, see the Hi-Tech Containers catalog.



- Continuous welded covering joint.
- Sturdy base, edge and lid profile.
- Lid with integral peripheral seal.
- Sturdy cast stacking corners on lid and base.
- Stacking feet on base with attachment bores inside and outside.
- Side walls with lines of perforated holes, closed off with blind screws.
- Silicone sealing on the inside of the base makes the container waterproof up to the lower edge of the drop handle.

- Inside of lid with DIN-A4 label frame with transparent sleeve, BY only (on B 5.2 Y: DIN A5).
- Lid loose on B 40.1 Y and B 40.2 Y.
- Snap fastener with spring anti-opening feature.
- Ergonomic sprung drop handles.
- Clearance dimensions approx. 30 mm less than inside dimensions (length and width).

Special equipment:

- Also available as UN-approved hazardous goods packaging.

Order No.	see No.	Model	Inside dimensions (L × W × H, approx. mm)	Outside dimensions (L × W × H, approx. mm)	Contents (approx. l)	Weight (approx. kg)	max. permissible gross weight
45 051	1	B5.2Y	380 × 265 × 220	420 × 305 × 270	22	4.2	25.0
45 050	2	B5 Y	570 × 380 × 220	615 × 420 × 270	47	6.4	32.0
45 052	–	B10 Y	570 × 380 × 466	615 × 420 × 516	100	7.6	46.0
45 055	3	B20.2Y	794 × 572 × 220	835 × 615 × 270	99	11.4	46.0
45 053	4	B20 Y	794 × 572 × 466	835 × 615 × 516	211	13.8	76.0
45 054	5	B20.1Y	794 × 572 × 717	835 × 615 × 761	325	17.0	107.0
45 058	6	B40.2Y	1175 × 793 × 220	1215 × 833 × 270	205	18.0	75.0
45 056	7	B40 Y	1175 × 793 × 465	1215 × 833 × 516	433	23.0	137.0
45 057	8	B40.1Y	1175 × 793 × 717	1215 × 833 × 761	668	25.7	200.0
40 790	–	D11Y	573 × 278 × 345	606 × 312 × 388	54	5.8	34.0
40 792	–	D111Y	573 × 278 × 540	606 × 312 × 583	86	6.3	42.0
41 708	–	D5Y	499 × 347 × 265	532 × 381 × 308	45	5.2	31.0
41 709	–	D9Y	499 × 347 × 443	532 × 381 × 486	76	6.3	40.0
45 036	–	B	1155 × 455 × 375	1200 × 500 × 430	197	14.0	72.0
45 037	–	D	555 × 455 × 375	600 × 500 × 430	94	8.0	45.0

K 470 universal container for hazardous goods



Order No.	see No.	Inside dimensions (L × W × H, approx. mm)	Outside dimensions (L × W × H, approx. mm)	Contents (approx. l)	Weight (approx. kg)	Max. permissible gross weight, kg
40 835 GGV	1	350 × 250 × 150	400 × 300 × 180	13	2.6	26.0
40 677 GGV	2	350 × 250 × 310	400 × 300 × 340	27	3.1	58.0
40 810 GGV	3	550 × 350 × 150	600 × 400 × 180	29	4.2	65.0
40 568 GGV	4	550 × 350 × 220	600 × 400 × 250	42	4.8	65.0
40 678 GGV	5	550 × 350 × 310	600 × 400 × 340	60	5.0	70.0
40 564 GGV	6	550 × 350 × 380	600 × 400 × 410	73	5.3	75.0
40 849 GGV	7	550 × 550 × 220	600 × 600 × 250	67	5.6	65.0
40 859 GGV	8	550 × 550 × 380	600 × 600 × 410	115	6.6	75.0
40 836 GGV	9	550 × 550 × 580	600 × 600 × 610	175	7.8	94.0
40 837 GGV	10	600 × 430 × 450	650 × 480 × 480	116	6.5	70.0
40 838 GGV	11	600 × 560 × 300	650 × 610 × 330	101	6.5	63.0
40 839 GGV	12	600 × 560 × 440	650 × 610 × 470	148	7.4	83.0
40 840 GGV	13	660 × 600 × 350	710 × 650 × 380	139	7.6	79.0
40 841 GGV	14	690 × 460 × 380	740 × 510 × 410	121	6.9	71.0
40 842 GGV	15	690 × 640 × 340	740 × 690 × 370	150	8.0	84.0
40 843 GGV	16	690 × 640 × 430	740 × 690 × 460	190	8.6	100.0
40 565 GGV	17	750 × 550 × 380	800 × 600 × 410	157	10.0	102.0
40 566 GGV	18	750 × 550 × 580	800 × 600 × 610	239	12.0	126.0
40 844 GGV	19	780 × 480 × 520	830 × 530 × 550	195	11.1	103.0
40 845 GGV	20	900 × 480 × 400	950 × 530 × 430	173	11.0	93.0
40 846 GGV	21	900 × 640 × 450	950 × 690 × 480	259	13.4	115.0
40 567 GGV	22	950 × 450 × 380	1000 × 500 × 410	162	10.9	65.0
40 847 GGV	23	1150 × 350 × 150	1200 × 400 × 180	60	7.5	50.0
40 580 GGV	24	1150 × 750 × 480	1200 × 800 × 510	414	20.0	183.0
40 848 GGV	25	1350 × 400 × 220	1400 × 450 × 250	119	9.5	65.0
40 875 GGV	26	1550 × 550 × 465	1600 × 600 × 495	396	25.0	150.0
40 876 GGV	27	1650 × 750 × 670	1700 × 800 × 700	829	30.0	200.0

Important note: Clearance dimensions approx. 30 mm less than inside dimensions (length and width). Special sizes on request.
Accessories: see from page 22ff.



Together with internal packaging made from plastic or glass, the K 470 can be used as hazardous goods packaging for the transportation of liquids and solids.

The distinguishing feature of the containers in this series is the maximum permissible gross weights.

We offer accessories such as liquid-tight bags, padding material or absorbent material to allow you to use your aluminium container for the transportation of hazardous goods.

The products in the K 470 series are also available as UN-approved packaging for hazardous goods. They are tested as composite packaging and approved as UN 4B packaging.



Standard models supplied empty of content.

You need the right interior fittings to transport hazardous goods safely.

In co-operation with leading suppliers, ZARGES offers a comprehensive range.



Important note:
You will find further details on the K 470 series starting on page 6.



Accessories:

Frame for warning signs (Fig. 1)

- To accommodate danger signs.
- Stainless steel design.
- **On request**



Label frame (Fig. 2)

- In various sizes in accordance with German industrial standard or in special sizes.
- **On request**

Absorbent material

- Absorbent material Vermiculite, grain size 3 – 6 mm, packed dust-tight in cushions.
- Dimensions (L × W): 300 × 200 mm, Filling 200 g, Absorbency: 600 ml
Order No. 61 963
- Dimensions (L × W): 500 × 200 mm, Filling 400 g, Absorbency: 1200 ml
Order No. 61 964

Padded inserts are available both as standard products and as individual, bespoke solutions. They are tailored to the weight and application of the goods in question and, where required, also contain the corresponding absorbent material. You can find further details on the interior fittings starting on page 22.

Mitraset® 19"- housing



Mitraset® 19"- housings in accordance with VG 95446 are designed to hold electronic equipment in a standard 19" rack configuration. They fulfil a variety of protective functions: Protecting the equipment against mechanical stress such as impact and vibrations, against electromagnetic interference such as radio waves, lightning etc. and against general environmental influences such as heat, moisture, dust etc.

Mitraset® 19"- housings incorporate the following features in order to meet these requirements: A shell in tight welded design, made from high-strength sheet aluminium and profiles and a pivoted swing frame made of profile sections.

The equipment to be protected is inserted in this frame and fixed securely in position. Rails and rubber mounts connect the swing frame with the housing shell. The mount type and material are selected to comply with the specific requirements.



- Degree of protection IP 65 in accordance with DIN 40 050 and ICE 34-5/529 due to welded housing and lid with all-round seal, when secured in place.
- Base with stacking battens, top has indentations to facilitate stacking.
- All sizes are interstackable (except NT610).
- Stable welded frame profile with integrated floating mounts for fasteners.
- Sides with recessed sprung drop handles.
- All sides and lid stiffened with moulded sections (except NT610).
- Rubber mounts with slide rails to accommodate the swing frame.
- Completely removable swing frame.
- Lid with toggle-action snap fasteners.
- Variable designs in different depths and heights.
- A comprehensive range of special equipment for a wide variety of applications.
- Can be fitted in Dornier-Shelter frames.
- **Also available as UN-approved hazardous goods packaging (Y-approved from 44 kg to 124 kg).**



Important note:
For further details on Mitraset®, please see our HiTech Containers catalog, Order No. 254

K 475 transport and storage container



Transport and storage containers of the K 475 series are reusable packaging solutions made to the highest standards. They are designed as watertight protective packaging for sensitive assemblies and equipment. The containers are available in standard sizes and in special sizes made to individual specifications.

On request, K 475 reusable containers can be supplied with special foam fittings, brackets and other additional equipment.



- Water vapour and pressure tight, stackable special reusable packaging of corrosion-resistant aluminium.
- Removable lid with all-round seal.
- Sturdy stacking corners on base and lid.
- Seal-welded container, tightness IP 67.
- Self-locking spring-loaded fasteners.
- Ergonomic heavy-duty sprung drop handles.
- Pressure compensation valve and moisture indicator.
- Clearance dimensions approx. 32 mm less than inside dimensions.



Important note:
For further details on the K 475, please see our HiTech Containers catalog, Order No. 254

Order No.	see No.	Inside dimensions (L × W × H, approx. mm)	Outside dimensions (L × W × H, approx. mm)	Contents (approx. l)	Weight (approx. kg)
45 131 GGV	1	360 × 260 × 265	400 × 300 × 300	25	4.8
45 133 GGV	2	360 × 360 × 265	400 × 400 × 300	34	5.5
45 135 GGV	–	460 × 460 × 365	500 × 500 × 400	77	8.2
45 137 GGV	3	560 × 360 × 265	600 × 400 × 300	53	7.1
45 138 GGV	4	560 × 360 × 365	600 × 400 × 400	74	7.8
45 141 GGV	5	760 × 360 × 265	800 × 400 × 300	73	10.7
45 142 GGV	–	760 × 360 × 365	800 × 400 × 400	100	11.8
45 144 GGV	–	760 × 560 × 360	800 × 600 × 400	153	15.1
45 145 GGV	6	760 × 560 × 460	800 × 600 × 500	196	16.8
45 146 GGV	–	760 × 560 × 560	800 × 600 × 600	238	18.5

Important note: Clearance dimension for K 475 containers approx. 32 mm less than inside dimensions

ZARGES hazardous goods packaging – K 410 Alu Case – GGV

K 410 Alu Case – GGV



- Aluminium case, anodised, for varied applications.
- Corrosion-resistant.
- Smooth surfaces.
- Corner reinforcements with case corner pieces.
- Comfortable carrying handle.
- Tension locks with protection against bursting open.
- Hinged lid with all-round seal, therefore extensively dust- and splashwater-tight.
- Clearance dimensions approx. 20 mm less than inside dimensions (length and width).

Order No.	see No.	Inside dimensions (L × W × H, approx. mm)	Outside dimensions (L × W × H, approx. mm)	Contents (approx. l)	Weight (approx. kg)
40 765 GGV	1	360 × 300 × 140	370 × 330 × 145	15	1.8
40 763 GGV	2	470 × 350 × 120	480 × 380 × 125	20	2.2
40 764 GGV	3	530 × 330 × 140	540 × 360 × 145	25	2.5
40 766 GGV	4	470 × 350 × 170	480 × 380 × 175	28	2.7

Important note: Clearance dimensions approx. 20 mm less than inside dimensions (length and width).
Special sizes on request.



Important note:
You can find further details on the K 410 Alu Case starting on page 40.

Standard models supplied empty of content.

ZARGES hazardous goods packaging – Hazardous goods container for radioactive substances of Category 7

Hazardous goods container for radioactive substances of Category 7



IP2 packaging –
Used as a container for contaminated construction waste

ZARGES containers also meet the recommendations of the IAEA as external packaging for the transport of radioactive substances.



K 470 with Type A approval

- The standard sizes of the K 470 series are tested for compliance with IP2 and thus qualify as industrial transport containers of Type 1 and Type 2.
- Some sizes are also approved as Type A external packaging.
- Please note that it is always the responsibility of the user to ensure compliance with the corresponding ADR requirements. To qualify as transport packaging of Type A or IP2, all components must conform to the requirements.
- When ordering, please specify hazardous goods category 7, Type A or IP2.



Housing as IP2 packaging

Hazardous goods container for potentially contagious goods of Category 6.2



ZARGES hazardous goods containers are approved as composite packaging for the transport of potentially contagious substances in accordance with UN numbers 2814 and 2900, Category A and B, with any transport operator. The containers have passed stringent tests, such as e.g. a drop test from a height of 9 m.

All sizes in the K 470, BY and Alu Case series can be used for the transport of UN number 3373. Dry ice or other coolants can be used for thermally controlled transport.



Order No.	see No.	Series	Inside dimensions (L x W x H, approx. mm)	Outside dimensions (L x W x H, approx. mm)	Contents (approx. l)	Weight when empty (approx. kg)	Max. permissible Gross weight (kg)
342 856	1	K 470	350 x 250 x 310	400 x 300 x 340	27	3.1	6.1
342 971	2	K 475	360 x 360 x 265	400 x 400 x 300	34	5.5	10.6

Accessories:

- Insulation insert for temperature-controlled transport, fits K 470, Order No. 342 856, **Order No. 43 832**
- Bag with slide-type seal as second internal packaging in accordance with packaging specifications P 650 and P 620, **Order No. 43 831**



Important note:

You will find further details on the K 470 series starting on page 6.
You will find further details on the K 475 series starting on page 57.

Reusable transportation container for clinical waste UN 3291

- Approved for UN 3291 clinical waste.
- Can be modified to suit a variety of processing systems and processes.
- Volume from approx. 450 to 1000 litres.
- Equipped with running gear or pallet substructure.
- Approved as UN 4B or UN 50B.



ZARGES hazardous goods packaging – Hazardous goods container for explosive substances of Category 1

Hazardous goods container for explosive substances of Category 1



Large containers and special containers for a wide variety of uses, e. g. as transport and storage media for guided missiles, missiles, miniature reconnaissance planes and many other applications.

Designed and built from high-strength aluminium alloy sheet metal and profiles. Innovative details such as shock absorbers, mounts and handling aids for problem-free, ergonomic and safe handling.

Tested and approved as hazardous goods packaging in accordance with UN requirements, i. e. can be transported on public roads.

We can also develop bespoke solutions tailored to your specific requirements on request!

- Reusable transport containers, e. g. for gas generators, airbag and belt tensioner modules of hazard category 1.
- Weight: approx. 53 kg incl. pallet.
- Payload: permissible gross weight 524 kg.
- Imposed load: approx. 1000 kg
- Inside dimensions (L × W × H): approx. 1130 × 730 × 810 mm.



Important note:

K 470 (from page 54), K 475 (page 57), BY container (page 53) and Alu Case (page 58) are also suitable for the transportation of explosive material of Category 1.

ZARGES hazardous goods packaging – RetouЯ® collapsible containers for less-than-cargo lots

RetouЯ® collapsible container for less-than-cargo lots



ZARGES collapsible containers are economical units in a packaging and transport chain based on the principle “big out, small in”. Depending on their size and design, these containers can hold up to 1000 l. When collapsed, their volume shrinks to around one third.

- Can be collapsed quickly and easily by one person.
- Simple handling due to interlocking profiles with connection locking device on the floor pan and side parts.
- Side protection profiles.
- High degree of stability due to three sets of profiles in the outside walls.
- Folding ratio 1:3.
- Lid securely fastened to rear wall by by swing-type hinges.
- End-walls and lid with additional, externally mounted stiffening profiles.
- Self-locking fasteners, suitable for lead seals and/or locking with a shackle lock.
- Stacking corners.
- Suitable for use on roller conveyors.
- 15 mm free space when collapsed (e. g. for interior fittings).
- Also available as UN-approved hazardous goods packaging, packaging category I:
 - 45 070 UN4B, max gross weight 120 kg
 - 45 073 UN50B, max. gross weight 180 kg



Important note: For further details on RetouЯ® collapsible containers for less-than-cargo lots, see page 39.

Order No.	Inside dimensions (L × W × H, approx. mm)	Outside dimensions (L × W × H, approx. mm)	Size when folded H (approx. mm)	Contents (approx. l)	Weight (approx. kg)	Max. permissible Gross weight (kg)
45 070 GGV	730 × 530 × 570	800 × 600 × 600	145	221	21.0	120.0
45 073 GGV	1130 × 730 × 740	1200 × 800 × 900	287	610	62.0	180.0

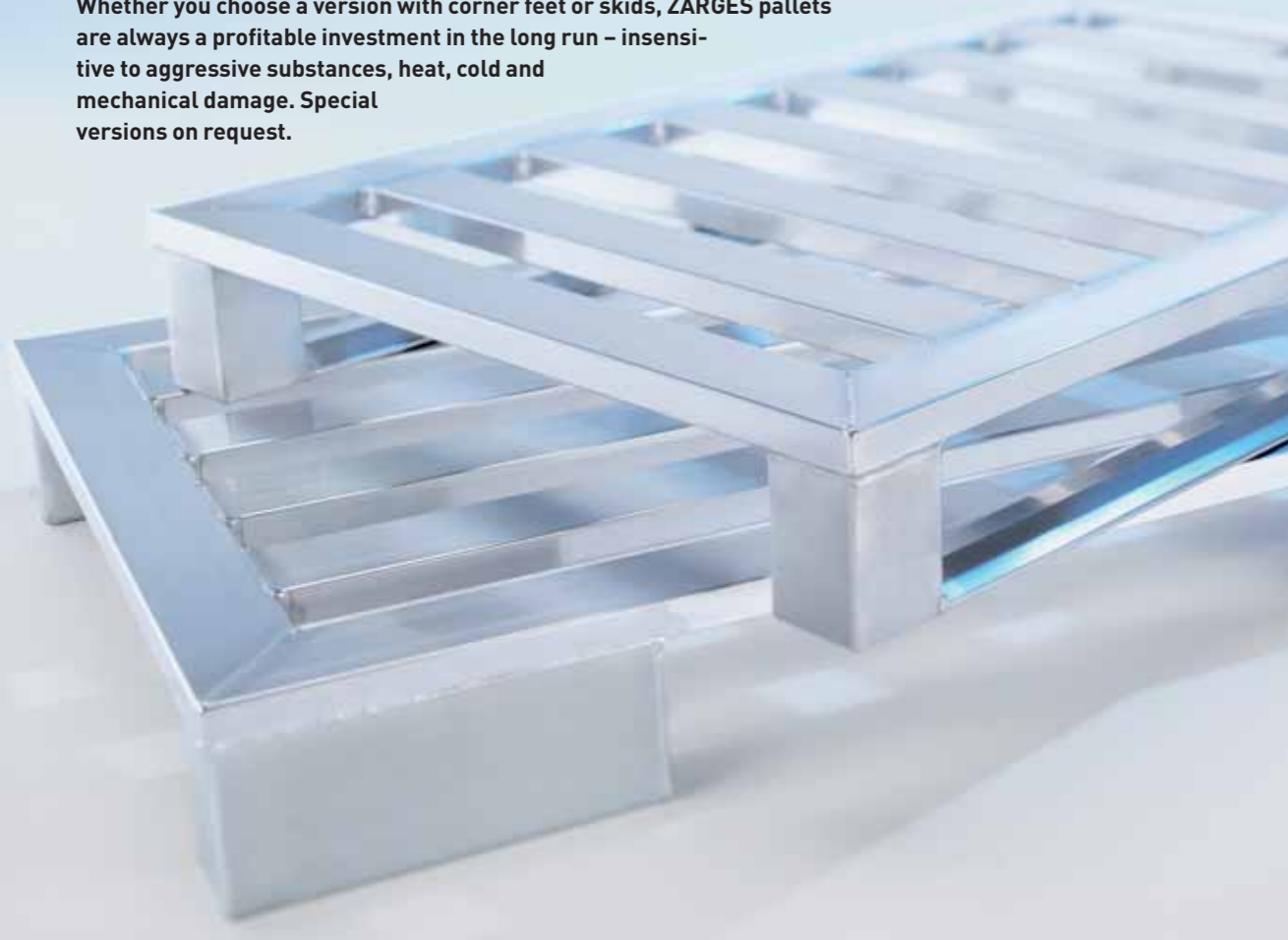
Important note: Aluminium pallets and aluminium side protection profiles are special equipment. Order Number 45 073: Standard delivery with wooden pallet and wooden side protection profiles. Dimensions and weight incl. flat wooden pallet. Special sizes on request.

Flat pallets

Flat pallets

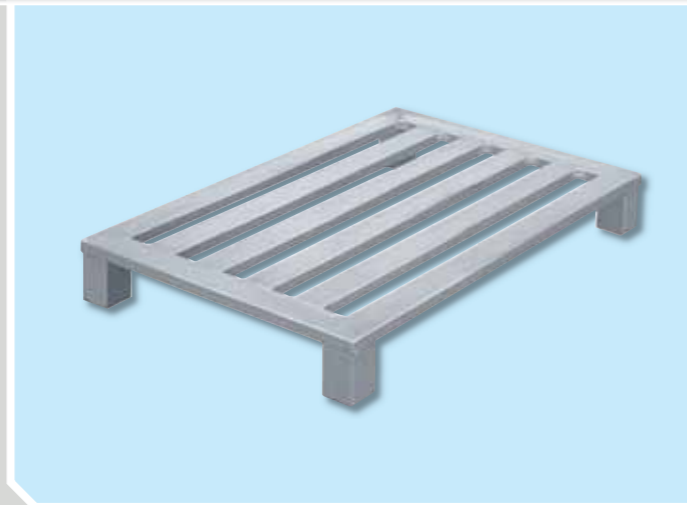
The distinguishing features of ZARGES aluminium pallets are their high stability and load-bearing capacity. They are also corrosion-resistant and have a long service life. Made from high-quality materials and carefully processed, they conform to hygiene requirements, are easy to clean and conform to GMP.

Whether you choose a version with corner feet or skids, ZARGES pallets are always a profitable investment in the long run – insensitive to aggressive substances, heat, cold and mechanical damage. Special versions on request.



Aluminium flat pallet with corner feet

- Frame and longitudinal members made of sealed, heavy-duty, corrosion-resistant aluminium sections.
- 4 corner feet.
- Seams welded watertight.



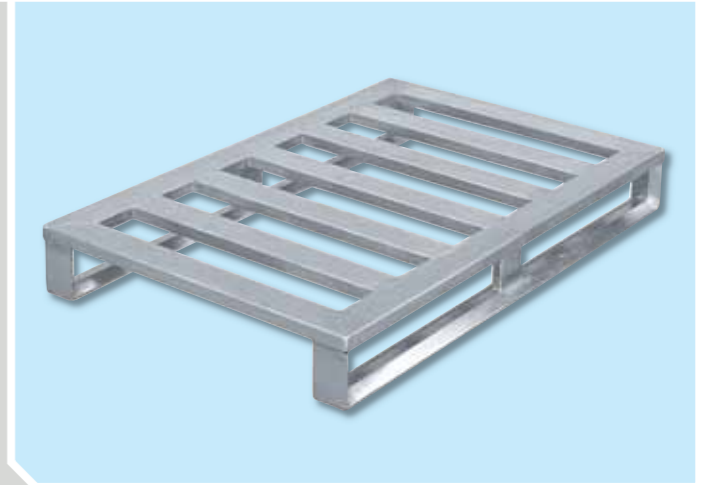
Order No.	Dimensions (L × W × H, approx. mm)	Number of members	Weight (approx. kg)	Load capacity (approx. kg)
45 162	800 × 600 × 150	3	8.5	600
45 172	1200 × 800 × 150	4	13.0	600
45 182	1200 × 1000 × 150	5	15.0	600

Standard models supplied empty of content.

Flat pallets

Aluminium flat pallet with skids

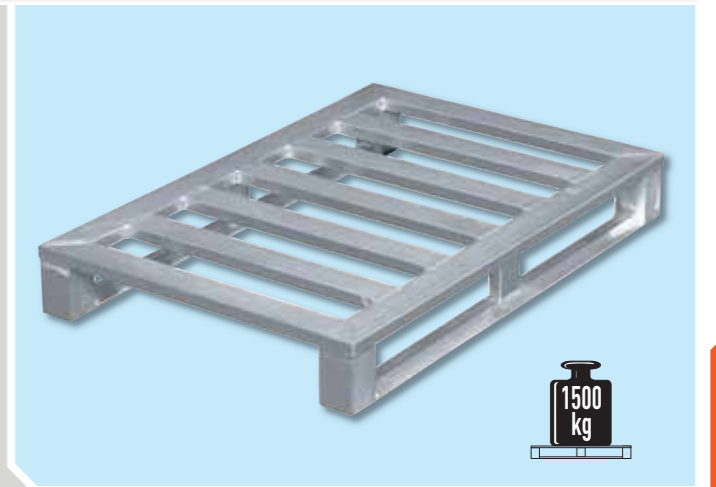
- Frame and crossmembers made of sealed, heavy-duty, corrosion-resistant aluminium sections.
- Skids with central support.
- Seams welded watertight.
- Suitable for use on roller conveyors.



Order No.	Dimensions (L × W × H, approx. mm)	Number of members	Weight (approx. kg)	Load capacity (approx. kg)
45 173	1200 × 800 × 150	5	12.8	1000
45 183	1200 × 1000 × 150	5	14.6	1000

Aluminium flat pallet with skids and corner feet

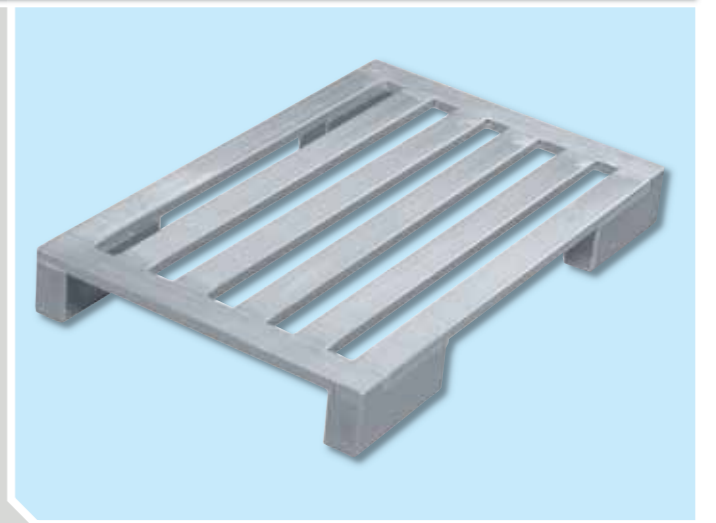
- Frame and crossmembers made of sealed, heavy-duty, corrosion-resistant aluminium sections.
- Skids with central support and 4 corner feet.
- Seams welded watertight.
- Suitable for use on roller conveyors.



Order No.	Dimensions (L × W × H, approx. mm)	Number of members	Weight (approx. kg)	Load capacity (approx. kg)
45 174	1200 × 800 × 150	6	15.2	1500
45 184	1200 × 1000 × 150	6	17.3	1500

Aluminium flat pallet with long corner feet

- Frame and longitudinal members made of sealed, heavy-duty, corrosion-resistant aluminium sections.
- Extra long corner feet (L = 300 mm) combine the advantages of skid undercarriage and corner feet. They are for example suitable for roller conveyors and high-level storage.
- Plenty of space to accommodate forklift arms. No full-length skid to get in the way, hence less risk of damage.
- Seams welded watertight.



Order No.	Dimensions (L × W × H, approx. mm)	Number of members	Weight (approx. kg)	Load capacity (approx. kg)
45 175	1200 × 800 × 150	4	14.0	1000
45 185	1200 × 1000 × 150	5	16.5	1000

Standard models supplied empty of content.

Universally configurable shelving system



Use:

- Universal shelving system for storage and retrieval areas.
- Simple height adjustment with removable insert rails.
- Insert depth for horizontal or angled arrangement of the ISO modular baskets.
- Can be easily extended or combined with steel shelf compartments.
- Hygienic, easy to clean.
- For use with ISO modular baskets 600 × 400 mm made from plastic.

Details:

- Steel, coated.
- Surface epoxy polyester.
- Powder coating 60 µ, light grey RAL 7035.
- Substructure made from robust square tubing 30 × 30 mm.
- Frame made from U-section, dimensions 34 × 34 × 2 mm.
- Hole spacing 71 mm.
- Total height approx. 2000 mm.
- Lower edge with height-adjustable feet.
- Hook-in insert rails made from anodised aluminium with sturdy abrasion-resistant end caps made of fiberglass-reinforced plastic PA6, colour anthracite.

Components:

- Frame element 600 mm or 400 mm.
- Connectors.

Accessories:

- Matching modular baskets available in various heights, see page 68.



Standard models supplied empty of content.



Shelving components (depth: 600 mm)

Order No.	Description	Number of shelves								
		1	2	3	4	5	6	7	8	9
46 140	Shelving segment, 2000 × 600 mm (H × D)	2	3	4	5	6	7	8	9	10
46 270*	Insert rail, 600 mm (D)	16	32	48	64	80	96	112	128	144
46 271	Insert rail, 620 mm (D)	▲	▲	▲	▲	▲	▲	▲	▲	▲
46 274	Connecting rod, 479 mm (L)	3	◆	◆	◆	◆	◆	◆	◆	◆
46 276	Connecting rod diagonal, 1206 mm (L)	1	1	2	2	3	3	4	4	5
46 277	Connecting rod, 928 mm (L)	◆	3	◆	6	3	◆	6	3	◆
46 279	Connecting rod, 1377 mm (L)	◆	◆	3	◆	3	6	3	6	9
46 072	Sheet steel shelf compartment, 800 × 600 (L × D)	▲	▲	▲	▲	▲	▲	▲	▲	▲
Width in mm		483	932	1381	1830	2279	2728	3177	3626	4075
Depth in mm		610								
Height in mm		approx. 2000								

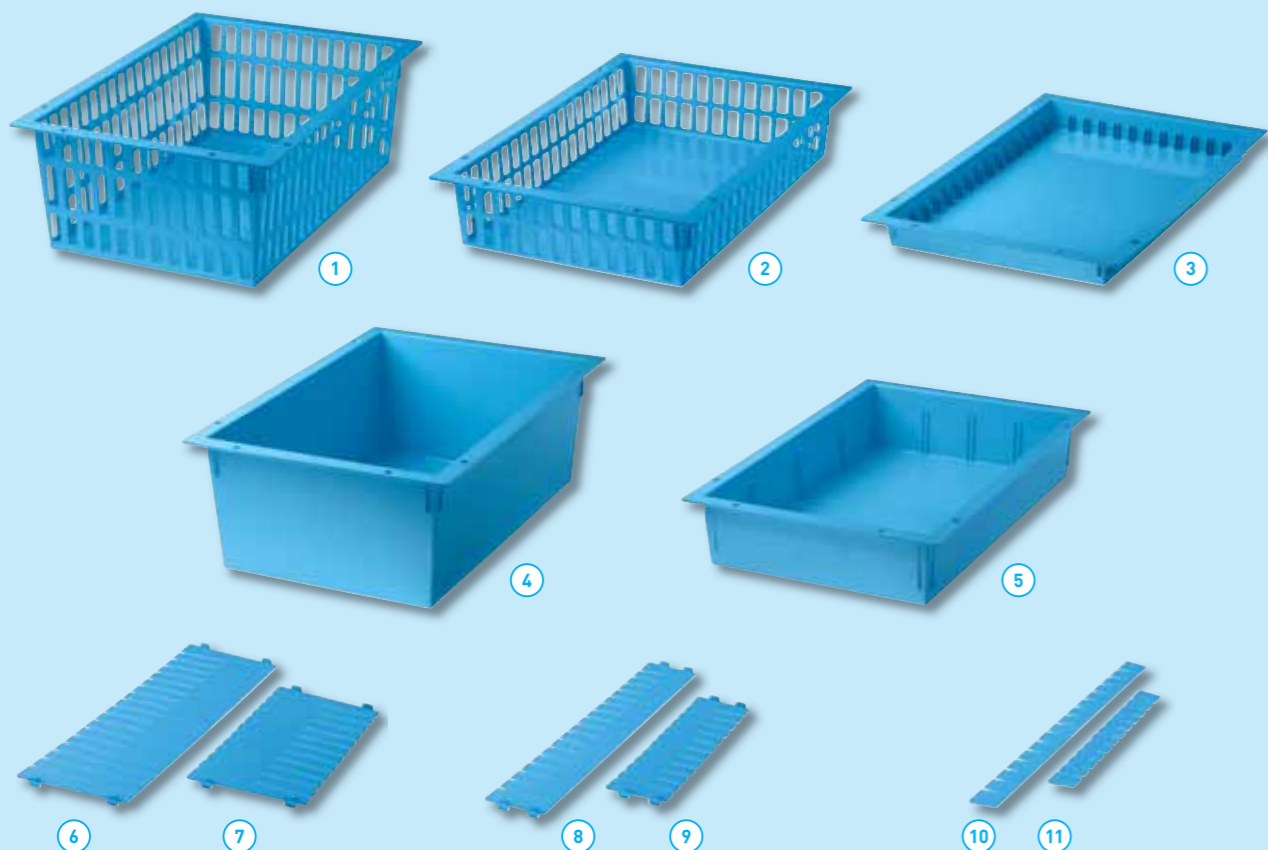
Shelving components (depth: 400 mm)

Order No.	Description	Number of shelves								
		1	2	3	4	5	6	7	8	9
46 141	Shelving segment, 2000 × 400 mm (H × D)	2	3	4	5	6	7	8	9	10
46 272*	Insert rail, 400 mm (D)	16	32	48	64	80	96	112	128	144
46 273	Insert rail, 420 mm (D)	▲	▲	▲	▲	▲	▲	▲	▲	▲
46 275	Connecting rod, 679 mm (L)	3	◆	3	◆	3	◆	3	◆	3
46 276	Connecting rod diagonal, 1206 (L)	1	1	2	2	3	3	4	4	5
46 278	Connecting rod, 1328 mm (L)	◆	3	3	6	6	9	9	12	12
46 079	Sheet steel shelf compartment, 800 × 400 (L × D)	▲	▲	▲	▲	▲	▲	▲	▲	▲
Width in mm		683	1332	1981	2630	3279	3928	4577	5226	5875
Depth in mm		410								
Height in mm		approx. 2000								

▲ = Quantity as required ◆ = Not required

* Suggested quantity (quantity variable)

Modules and modular baskets



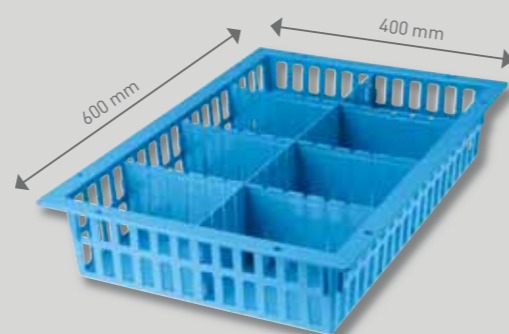
ABS modules and ABS modular baskets, 600 x 400 mm

- Light blue.
- Heat-resistant to 85 °C.

Order No.	see No.	Description	Dimensions (L x W x H, approx. mm)
46 000	1	ABS modular basket	600 x 400 x 200
46 005	2	ABS modular basket	600 x 400 x 100
46 011	3	ABS module	600 x 400 x 50
46 200	4	ABS module (not subdividable)	600 x 400 x 200
46 202	5	ABS module	600 x 400 x 100

Matching dividers

Order No.	No.	Designation	Dimensions (L x H, approx. mm)
46 027	6	Longitudinal divider for 46 000	600 x 200
46 028	7	Crossways divider for 46 000	400 x 200
46 029	8	Longitudinal divider for 46 005 / 46 202	600 x 100
46 030	9	Crossways divider for 46 005 / 46 202	400 x 100
46 034	10	Longitudinal divider for 46 011	600 x 50
46 035	11	Crossways divider for 46 011	400 x 50



Modular basket with dividers

Standard models supplied empty of content.

Modules and modular baskets Accessories

Label holder (POM), white, unbreakable and impact-resistant
 → can be inserted in slots, clipped on to module edge and dividers
 → Dimensions (L x W x H): approx. 44 x 14 x 63 mm
 → **Order No. 46 020**

→ can be inserted in slot and clipped onto divider
 → Dimensions (L x W x H): approx. 44 x 14 x 63 mm
 → **Order No. 46 024**

T-piece (ABS), as connector
 → attached at specified break points
 → Dimensions (L x W x H): 47 x 26 x 28 mm
 → **Order No. 46 022**

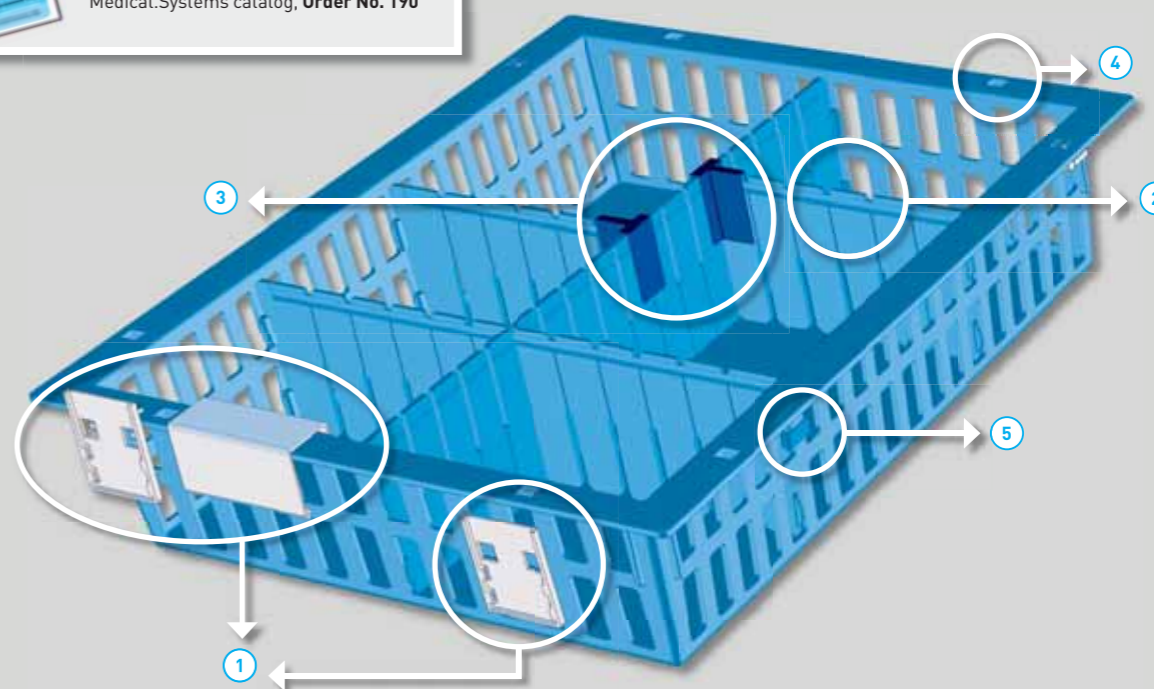
Label holder (PC), clear glass, for paper labels
 → clips onto upper edge of module
 → Dimensions (L x W x H): 80 x 37 x 44 mm
 → **Order No. 46 023**

Drawer stop, greyish-white, one-piece
 → for modules and modular baskets
 → **Order No. 46 026**

Divider for modules and modular baskets
 For product description, see page 68.

Divider fixing
 → Steel, blue, powder-coated
 → Dimensions (L x W x H): 25 x 10 x 9 mm
 → **Order No. 46 060**

Important note:
 You can find further details on the storage and retrieval shelving in our Medical Systems catalog, **Order No. 190**



Standard models supplied empty of content.

The ZARGES box trolley range –

Versatile solutions for your logistics tasks

➔ For transportation within the company, deliveries to external plants and branches, laundry transport, supply or disposal – there is a ZARGES box trolley for every application.

A choice of designs and a versatile range of accessories make ZARGES box trolleys multifunctional helpers.

Special constructions are available for special applications.



ZARGES uses only the best
branded products.

W 170 transport trolley



Sturdy aluminium trolley for versatile use.

- Sturdy, generously dimensioned edge and base profile sections, high-strength positive jointing ensures permanent bonding between jacket and base metal.
- End and side walls reinforced with peripheral beading and corner beads.
- Running gear: 2 swivel and 2 fixed castors, corner-mounted, Ø 125 mm, 40 mm wide, easy running, rubber wheels, "non-marking", roller bearings, thread guards.

Order No.	Inside dimensions (L × W × H, approx. mm)	Outside dimensions (L × W × H, approx. mm)	Contents (approx. l)	Weight (approx. kg)
40 631	1000 × 640 × 650	1050 × 690 × 855	415	19.5
40 635	1250 × 700 × 750	1300 × 750 × 955	655	23.7

Accessories:
Lid hinged on, with lid strap and 2 snap fasteners.

- Fits 40 631
Order No. 40 654
- Fits 40 635
Order No. 40 675
- Fits 40 631 with slot
Order No. 327 412
- Fits 40 635 with slot
Order No. 339 147

Standard models supplied empty of content.

Transportation container, mobile



Aluminium transportation container for disposal in accordance with data-protection provisions

- Sturdy edge and base profile.
- End and side walls reinforced with peripheral beading and corner beads.
- Profile-reinforced, hinged lid with slot approx. 420 × 24 mm with sheet metal security flap.
- One galvanised-steel snap fastener.
- One sliding handle on the wheel side.
- Running gear: Axle tube with 2 rubber wheels, Ø 200 mm.

Order No.	Inside dimensions (L × W × H, approx. mm)	Overall width (approx. mm)	Contents (approx. l)	Weight (approx. kg)
40 896	450 × 550 × 990	580	240	15.0

Accessories:
Infeed trap for files

- Can be inserted between lid and bottom section.
Order No. 40 895

Spring-loaded flap for slot
→ On request



Standard models supplied empty of content.

W 170 plus transport trolley



Sturdy aluminium trolley for versatile use.

- Anodised, edge profile reinforced with abrasion resistant plastic padding.
- Sturdy, generously dimensioned edge and base profile sections, high-strength positive jointing ensures permanent bonding between jacket and base metal.
- End and side walls reinforced with peripheral beading and corner beads.
- Running gear: 2 swivel and 2 fixed castors in tilt arrangement, Ø 100/125 mm, rubber wheels, "non-marking", roller bearings, easy-running, thread guards.

Order No.	Inside dimensions (L × W × H, approx. mm)	Outside dimensions (L × W × H, approx. mm)	Contents (approx. l)	Weight (approx. kg)
40 695	W 170 plus transport trolley with castors Ø 125 mm			
	1300 × 700 × 600	1350 × 750 × 800	540	25.0
40 696	W 170 plus transport trolley with castors Ø 100 mm			
	1000 × 600 × 590	1050 × 650 × 770	350	19.0

Standard models supplied empty of content.

W 171 transport trolley with fold-down section



Sturdy aluminium trolley for versatile use.

- Sturdy, generously dimensioned edge and base profile sections, high-strength positive jointing ensures permanent bonding between jacket and base metal.
- End and side walls reinforced with peripheral beading and corner beads.
- One long side with fold-down section folding half-way, for more convenient loading and unloading.
- Front cutout with profile-section surround; profile-section joints continuously welded.
- Flap with bolt retainer and moving holding hinges.
- Running gear: 2 swivel and 2 fixed castors, corner-mounted, Ø 125 mm, 40 mm wide, easy running, rubber wheels, "non-marking", roller bearings, thread guards.



Accessories:
Lid hinged on, with lid restraint strap and 2 snap fasteners.

- Fits 40 633
Order No. 40 559
- Fits 40 674
Order No. 40 675
- Fits 40 674
Order No. 339 147 with slot

Slip lid without fasteners

- Fits 40 633
Order No. 40 558

Order No.	Inside dimensions (L × W × H, approx. mm)	Outside dimensions (L × W × H, approx. mm)	Contents (approx. l)	Weight (approx. kg)
40 633	900 × 500 × 780	950 × 550 × 980	350	20.0
40 674	1250 × 700 × 1200	1300 × 750 × 1400	1050	33.0

Standard models supplied empty of content.

W 171 transport trolley with 3-part lid



Sturdy aluminium trolley for versatile use.

- 3-part lid folding mechanism and a front-panel flap.
- Front cutout with profile-section surround; profile-section joints continuously welded.
- Sturdy, generously dimensioned edge and base profile sections, high-strength positive jointing ensures permanent bonding between jacket and base metal.
- Smooth walls without beads.
- Longitudinal seam welded, base joint sealed all round.
- Trolley base with drainage channel and drain valve.
- Wide handle at swivel-castor end.
- Plastic-padded fender frame all round.
- Running gear: 2 swivel and 2 fixed castors, corner-mounted, Ø 200 mm, 50 mm wide, easy running, rubber wheels, "non-marking", roller bearings, thread guards.



Order No.	Inside dimensions (L × W × H, approx. mm)	Outside dimensions (L × W × H, approx. mm)	Contents (approx. l)	Weight (approx. kg)
40 691	1000 × 575 × 1200	1140 × 685 × 1490	690	30.0
40 692	1250 × 700 × 1200	1390 × 810 × 1490	1050	35.0
40 693*	1000 × 575 × 1200	1140 × 685 × 1490	690	30.0
40 694*	1250 × 700 × 1200	1390 × 810 × 1490	1050	35.0

* Non-anodised design

Standard models supplied empty of content.

NEW!

W 171 transport trolley without beads



Sturdy aluminium trolley for versatile use.

- Smooth walls without beads.
- Aluminium lid without snap fasteners, hinged with 2 restraint straps.
- Longitudinal seam welded, base joint sealed all round.
- Trolley base with drainage channel and drain valve.
- Wide handle at swivel-castor end.
- Running gear: 2 fixed and 2 swivel castors with brakes, Ø 125 mm, 40 mm wide, easy running, "non-marking", ball bearings, in polypropylene (grey) with thread guards.

Order No.	Inside dimensions (L × W × H, approx. mm)	Outside dimensions (L × W × H, approx. mm)	Contents (approx. l)	Weight (approx. kg)
40 697	900 × 500 × 780	979 × 579 × 982	350	24.5
40 698*	900 × 500 × 780	1040 × 640 × 982	350	27.5

* with fender frame

Standard models supplied empty of content.

W 172 transport trolley

Sturdy aluminium trolley for versatile use.

- Sturdy, generously dimensioned edge and base profile sections, high-strength positive jointing ensures permanent bonding between jacket and base metal.
- End and side walls reinforced with peripheral beading and corner beads.
- One long side with cutout section, approx. 1230 × 295 mm.
- Side cutout with profile-section surround; profile-section joints continuously welded.
- One wide handle at each end.
- Running gear: 2 swivel and 2 fixed castors, corner-mounted, Ø 200 mm, 50 mm wide, easy running, rubber wheels, "non-marking", roller bearings, thread guards.



Order No.	Inside dimensions (L × W × H, approx. mm)	Outside dimensions (L × W × H, approx. mm)	Contents (approx. l)	Weight (approx. kg)
40 634	1500 × 900 × 700	1650 × 950 × 980	945	37.0

W 181 transport trolley

Aluminium box trolley for transporting sensitive, lightweight materials

- Sturdy edge and base profile.
- Smooth inside walls.
- Side-panel connection straight-bead-riveted.
- Running gear: 2 swivel and 2 fixed castors, corner-mounted, Ø 75 mm, 25 mm wide, easy running, rubber wheels, "non-marking", roller bearings, thread guards.



Order No.	Inside dimensions (L × W × H, approx. mm)	Outside dimensions (L × W × H, approx. mm)	Contents (approx. l)	Weight (approx. kg)
40 650	760 × 400 × 500	800 × 440 × 625	150	8.0

W 182 transport trolley

Sturdy aluminium trolley for versatile use.

- Sturdy edge and base profile.
- End and side walls reinforced with peripheral beading and corner beads.
- Stackable.
- Running gear: 2 swivel and 2 fixed castors, corner-mounted, Ø 125 mm, 40 mm wide, easy running, rubber wheels, "non-marking", roller bearings, thread guards.
- **Special features:**
Order No. 40 661: anodised, with 16 drain holes in centre of floor.
Order No. 40 780: non-anodised, without drain holes in floor.



Order No.	Inside dimensions (L × W × H, approx. mm)	Outside dimensions (L × W × H, approx. mm)	Contents (approx. l)	Weight (approx. kg)
40 780	700 × 560 × 590	740 × 600 × 760	230	12.0
40 661	700 × 560 × 590	740 × 600 × 760	230	12.0

Standard models supplied empty of content.

W 161 Trolley with spring-loaded base



Trolley with spring-loaded base W 161, anodised.

- Sturdy, generously dimensioned edge and base profile sections, high-strength positive jointing ensures permanent bonding to jacket body.
- Edge profile reinforced with abrasion-resistant plastic padding (Fig. 3).
- Trolley with vertically moveable base which keeps the load at constant height for easy access (Fig. 1).
- Depending on the type of trolley, the load capability can be varied from 30 to 195 kg in increments of 15 kg by means of replaceable lifting elements.
- The moveable base does not tilt, even when loaded on only one side (Fig. 2).
- Running gear: 2 swivel and 2 fixed castors, Ø 125 mm, 40 mm wide, easy running, rubber wheels, "non-marking", roller bearings, thread guards.
- Castors arranged centrally for easy manoeuvring. Even in the most confined spaces.
- Corner-mounted running gear available on request.

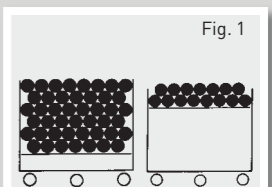


Fig. 1



Fig. 2



Fig. 3

Order No.	Inside dimensions (L × W × H, approx. mm)	Outside dimensions (L × W × H, approx. mm)	Contents (approx. l)	Weight (approx. kg)	Set for loading (kg)
40 644	1000 × 650 × 485	1060 × 710 × 820	315	24.5	90.0
40 645*	1010 × 420 × 460	1060 × 470 × 800	195	21.0	30.0
40 646	1010 × 600 × 460	1060 × 650 × 800	280	25.0	45.0
40 647	1410 × 700 × 460	1460 × 750 × 800	455	29.0	60.0
40 756	1410 × 700 × 580	1460 × 750 × 920	570	31.5	150.0

* running gear: 4 corner-mounted swivel castors

Standard models supplied empty of content.

W 125 transport trolley

Special aluminium trolley, anodised, welded watertight.

- Sturdy edge profile section, smooth inside walls.
- One long side with cutout section, approx. 885 × 350 mm.
- Side cutout with profile-section surround; profile-section joints continuously welded.
- Wide handle at each end.
- Floor with integrated drainage channels and drain valve for problem-free draining off of liquids.
- Plastic-padded fender frame all round.
- Running gear: 2 swivel and 2 fixed castors, Ø 125 mm, 40 mm wide, easy running, rubber wheels, "non-marking", roller bearings, thread guards.
- Swivel castors with wheel brakes.

Special accessories:

- Centre pivot for lift-tilt device in accordance with DIN 3070.
- Special running gear for container washdown facility.
- Coupling/towbar for use in trolley trains.

Accessories:

- Aluminium fold-down wall for side cutout
Order No. 40 888
- Hinged lid with two snap fasteners and peripheral seal
Order No. 40 889
- Central stop for swivel castors Ø 160 mm
Order No. 3062



Order No.	Inside dimensions (L × W × H, approx. mm)	Outside dimensions (L × W × H, approx. mm)	Contents (approx. l)	Weight (approx. kg)
40 887	1185 × 620 × 850	1300 × 730 × 1100	620	38.0

W 128 transport trolley

Special aluminium trolley, anodised, welded watertight.

- Sturdy edge profile section, smooth inside walls.
- Floor with integrated drainage channels and drain valve for problem-free draining off of liquids.
- Running gear: 2 swivel and 2 fixed castors, Ø 125 mm, 40 mm wide, easy running, rubber wheels, "non-marking", roller bearings, thread guards.



Order No.	Inside dimensions (L × W × H, approx. mm)	Outside dimensions (L × W × H, approx. mm)	Contents (approx. l)	Weight (approx. kg)
40 623	1000 × 700 × 400	1040 × 740 × 765	280	21.0

Standard models supplied empty of content.

Accessories and special equipment for W 170 / W 171 box trolley



Towing bracket with coupling (Fig. 1)
 → Folds upwards
 → Firmly attached towing device
 → **Order No. 3008**

Running gear / castors (Fig. 2)
 → Ø 125 mm, 40 mm wide
 → Ø 160 mm, 40 mm wide
 → Ø 200 mm, 50 mm wide
 → Also available for container wash-down facilities on request
 → **On request**

Centre pivot
 → Ø 40 mm
 → For lift-tilt device
 → **On request**

Wheel brake for swivel castors (Fig. 3)
 → **On request**

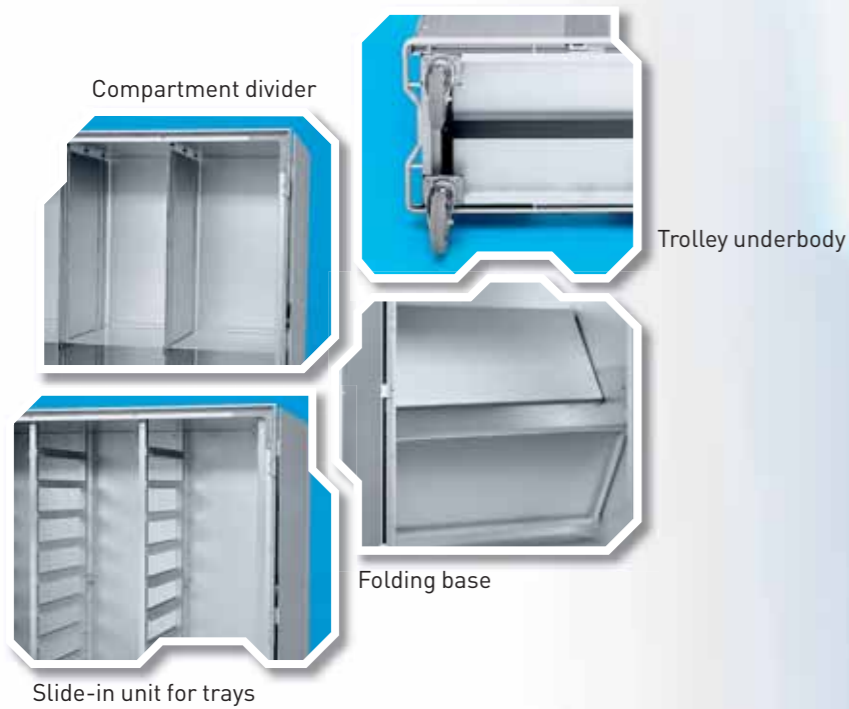
Directional locking device for swivel castors
 → Ø 200 mm
 → **On request**

Sliding handle
 → **On request**

Peripheral fender frame (Fig. 4)
 → Plastic-padded
 → **On request**

Standard models supplied empty of content.

The ZARGES cupboard trolley range – ergonomics and comfort made to measure



The multifunctional trolley for protected, safe and hygienic storage and rational transport of tools, material, laundry, food and many other items.

The sturdy trolley body in anodised aluminium, all-round profile-sections, ergonomic wide handles, doors that open wide and are equipped with an integral seal and central locking, easy running gear with asymmetrically mounted rubber-wheeled castors, a wide range of models and practical accessories to choose from make the ZARGES cupboard trolley range a popular solution for internal and external transport and storage problems. In industry, the service sector, government agencies, hospitals, laundries etc.



Towing bracket which folds upward and coupling for transport in trolley trains



Central locking locks doors in the profile-section frame



Cylinder lock available as a series of identical or different locks



Top **fender frame** with abrasion- and disinfectant-resistant plastic padding; Heat-resistant to 95 °C



The **peripheral door** is suitable for washdown facilities



Each end face with an **ergonomic handle of coated cast aluminium**



Central stop with simple operation via connecting pedal



Swivel castors with **wheel brake**



Special equipment: Also suitable for washdown facilities if suitable running-gear castors are used

W 105 cupboard trolley (type III) plus



Clearance (type III)



Practical transport and storage trolley, e. g. for fresh laundry, dirty washing and many other items.

- Aluminium cupboard trolley, anodised, for varied applications.
- Smooth interior; no undercuts/no inaccessible areas in washdown facility (inside dimensions correspond to clearance dimension).
- All-round full-section frame, corner areas reinforced with gusset plates.
- Profile-section frame with seal, high noise muffling.
- Two doors which can be swung open 270° parallel to the end faces, magnetic catch for open doors.
- Door leaves 3 mm thick, with sturdy, non-rusting individual hinges.
- Central locking (easy-to-operate lever) locks doors in the profile-section frame.
- Each end face with an ergonomic wide handle of coated cast aluminium.
- One end face with label frame, insert dimensions 69 × 50 mm.
- All-round fender frame with abrasion and disinfectant-resistant plastic padding; heat-resistant to 95 °C.
- Trolley underbody: phosphated and powder coated torsional tube.
- Running gear: 2 swivel and 2 fixed castors, corner-mounted, Ø 200 mm, 50 mm wide, easy running, rubber wheels, "non-marking", roller bearings, thread guards.

Also suitable for container washdown facilities if appropriate special running-gear castors are used.

Order No.	see No.	Inside dimensions (L × W × H, approx. mm)	Outside dimensions (L × W × H, approx. mm)	Contents (approx. l)	Weight (approx. kg)
40 667	-	W 105 cupboard trolley without interior fittings 1135 × 550 × 1390	1255 × 630 × 1725	870	62.0
40 669	2	W 105 cupboard trolley with 1 additional shelf 1135 × 550 × 1030	1255 × 630 × 1365	640	59.0
40 673	1	W 105 with 2 additional shelves and central stop 1135 × 550 × 1390	1255 × 630 × 1725	870	66.0
40 666*	-	W 105 cupboard trolley with 2 additional shelves (e. g. for sterile containers) 1250 × 620 × 1390	1370 × 700 × 1725	1080	73.0

* This trolley has space enough for: sterile containers, 600 × 300 × 150 (300) mm, screen containers, 600 × 300 × 130 (150) mm and other container sizes.

Standard models supplied empty of content.

W 105 food trolley (type III) plus

Practical, hygienic cupboard trolley for meals.

- Anodised aluminium cupboard trolley for hygienic food storage.
- Smooth interior; no undercuts/no inaccessible areas in washdown facility (inside dimensions correspond to clearance dimensions).
- All-round full-section frame, corner areas reinforced with gusset plates.
- Profile-section frame with seal, high noise muffling.
- Base joint sealed with silicone.
- Two doors which can be swung open 270° parallel to the end faces, magnetic catch for open doors.
- Door leaves 3 mm thick, with sturdy, non-rusting individual hinges.
- Central locking (easy-to-operate lever) locks doors in the profile-section frame.
- Each end face with an ergonomic wide handle of coated cast aluminium.
- One end face with label frame, insert dimensions 69 × 50 mm.
- All-round fender frame with abrasion and disinfectant-resistant plastic padding; heat-resistant to 95 °C.
- Trolley underbody: phosphated and powder coated torsional tube.



- Running gear: 2 swivel and 2 fixed castors, corner-mounted, Ø 200 mm, 50 mm wide, easy running, rubber wheels, "non-marking", roller bearings, thread guards.
- Swivel castors with wheel brakes.

Also suitable for container washdown facilities if appropriate special running-gear castors are used.

Order No.	Inside dimensions (L × W × H, approx. mm)	Outside dimensions (L × W × H, approx. mm)	Contents (approx. l)	Weight (approx. kg)
40 891	Interior fittings to hold 39 Euronorm trays 1160 × 550 × 1325	1280 × 630 × 1660	845	71.0
40 893	Interior fittings with individual slide-in unit for 33 Euronorm trays 1245 × 550 × 1260	1365 × 630 × 1595	860	75.0

W 105 cupboard trolley (type I)

Practical transport and storage trolley, e. g. for fresh laundry, dirty washing and many other items.

- Aluminium cupboard trolley, anodised, for varied applications.
- Full profile-section frame in the interior; Clearance dimensions approx. 60 mm less than inside dimensions.
- Profile-section frame with seal, high noise muffling.
- Two doors which can be swung open 270° parallel to the end faces, magnetic catch for open doors.
- Door leaves 3 mm thick, with sturdy, non-rusting individual hinges.
- Central locking (easy-to-operate lever) locks doors in the profile-section frame.
- Each end face with an ergonomic wide handle of coated aluminium section.
- One end face with label frame, insert dimensions 69 × 50 mm.
- One DIN A4 label frame on inside of right door.
- All-round fender frame with abrasion and disinfectant-resistant plastic padding; heat-resistant to 95 °C.
- Trolley underbody: phosphated and powder coated torsional tube.



- Running gear: 2 swivel and 2 fixed castors, corner-mounted, Ø 200 mm, 50 mm wide, easy running, rubber wheels, "non-marking", roller bearings, thread guards.

Order No.	see No.	Inside dimensions (L × W × H, approx. mm)	Outside dimensions (L × W × H, approx. mm)	Contents (approx. l)	Weight (approx. kg)
40 681	-	1120 × 550 × 1430	1230 × 625 × 1740	875	67.0
40 682	1	1120 × 550 × 1030	1230 × 625 × 1340	640	59.0
40 683*	-	1120 × 550 × 1430	1230 × 625 × 1740	875	66.0
40 684	2	1250 × 620 × 1430	1350 × 695 × 1740	1100	73.0
40 689	-	750 × 550 × 1430	890 × 625 × 1740	590	58.0

* swivel castors with wheel brake

Standard models supplied empty of content.

W 105 OP cupboard trolley (type I)

Aluminium cupboard trolley for transporting sterile fresh-laundry packs and dirty washing.

- Full profile-section frame in the interior; Clearance dimensions approx. 60 mm less than inside dimensions.
- Profile-section frame with seal, high noise muffling.
- Two doors which can be swung open 270° parallel to the end faces, magnetic catch for open doors.
- Door leaves 3 mm thick, with sturdy, non-rusting individual hinges.
- Central locking (easy-to-operate lever) locks doors in the profile-section frame.
- Each end face with an ergonomic wide handle of coated aluminium section.
- One end face with black lettering area and DIN A4 label frame.
- Two peripheral fender frames, top and bottom, with abrasion- and disinfectant-resistant plastic padding; heat-resistant to 95 °C.
- Two folding additional shelves with burr-free perforations.
- Trolley counterbalanced to a standardised weight of 53 +/- 0.2 kg.
- Trolley underbody: phosphated and powder coated torsional tube.
- Running gear: 4 corner-mounted swivel castors, Ø 125 mm, 40 mm wide, easy running, rubber wheels, "non-marking", roller bearings, thread guards.



Order No.	Inside dimensions (L x W x H, approx. mm)	Outside dimensions (L x W x H, approx. mm)	Contents (approx. l)	Weight (approx. kg)
40 890	835 x 470 x 1430	965 x 545 x 1700	560	53,0

GW 1700 cage trolley

Combined fresh-laundry and dirty-washing trolley.

- Galvanised steel, yellow chromate coating.
- Tubular-frame chassis mounted on top.
- Side walls, rear wall and base made from sturdy wire mesh.
- Upper base can be folded backwards, middle base can be folded to the front.
- Front section with low wall and crosspiece.
- Identification plate 100 x 130 mm.
- Clothes rail, three tension belts, footplates.
- Compartment height when bases are folded down: bottom compartment 650 mm; middle compartment 560 mm; top compartment 320 mm.
- Running gear: 2 swivel and 2 fixed castors, corner-mounted, Ø 125 mm, 40 mm wide, easy running, rubber wheels, "non-marking", roller bearings, thread guards.



Order No.	Inside dimensions (L x W x H, approx. mm)	Outside dimensions (L x W x H, approx. mm)	Weight (approx. kg)
43 910	740 x 540 x 1530	800 x 600 x 1730	37,0

Delivered dismantled

Standard models supplied empty of content.

Accessories and special equipment for cupboard trolleys

ZARGES cupboard trolleys are available without, with one or two additional shelves and with special fittings for a wide variety of applications.

Depending on the configuration selected, the cupboard trolleys can be used in many fields – as transport equipment in storage and retrieval areas, in the catering trade, for transporting food in hotels and restaurants, in hospitals and homes, to store electronics, components etc.

Fitted with a drawbar or towing bracket, cupboard trolleys can be linked and moved in trains. They can also be cleaned in container washdown facilities. The applications are unlimited.



Wheel brake (Fig. 1)

- Operatable via central stop
- **On request**

Wheel brake for swivel castors (Fig. 2)

- Ø 200 mm
- **Order No. 3060**

Running gear suitable for container washdown facilities

- Ø 160/200 mm
- **On request**

Additional shelf

- Firmly mounted
- **Order No. 3001**

- Removable
- **On request**

Towing bracket with coupling (Fig. 3)

- Folds upwards
- (Firmly attached towing device)
- **Order No. 3004**

Peripheral fender frame, top (Fig. 4)

- **On request**

Drawbar with towing brackets

- Removable towing device
- **Order No. 3005**

Clothes rail

- **Order No. 3002**

Lockable trolley doors (Fig. 5)

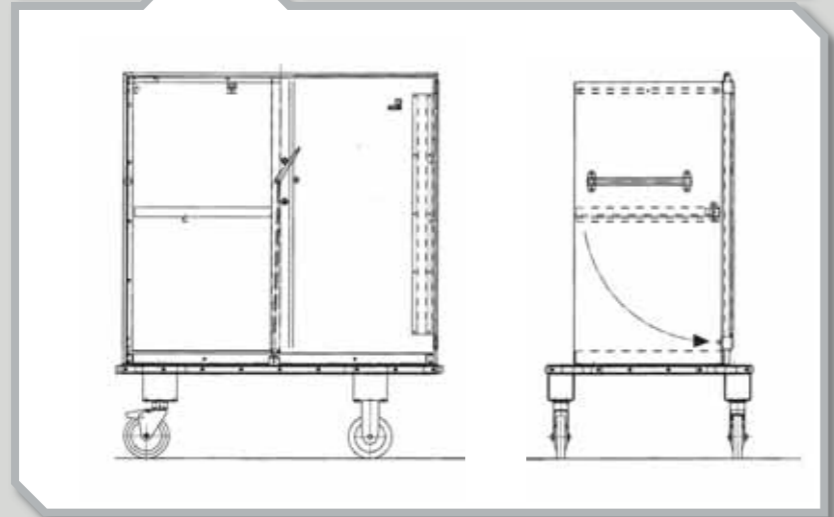
- Cylinder lock, identical locks with 2 keys each
- **Order No. 3006**

- Non-identical locks, with 2 keys each
- **Order No. 3007**

Label frame (Fig. 6)

- 74 x 50 mm, DIN A 7/DIN A 8
- 150 x 50 mm, DIN A 6
- 212 x 50 mm, DIN A 5
- 210 x 148 mm, DIN A 5
- 296 x 210 mm, DIN A 4 with transparent sleeve.
- **On request**

Standard models supplied empty of content.



Shelf trolleys and Variomobile

Protruding or stackable objects, luggage, cardboard boxes or sacks, trays, pots, canisters or laundry – the ZARGES platform trolleys can do the job and transport the goods to their destination quickly and easily.



Aluminium shelf trolley, anodised, welded version

- With two top push-pull handles and integrated edge reinforcement.
- Plastic deflector castors.
- Running gear: 4 corner-mounted swivel castors, Ø 125 mm, 40 mm wide, easy running, rubber wheels, "non-marking", roller bearings, thread guards.
- Accessories: Wheel brake for swivel castors with Ø 125 mm.
- Load capacity per shelf: 40 kg.
- 2 shelves on Order No. 40 726 (shelf spacing 488 mm),
- 3 shelves on Order No. 40 727 (shelf spacing 230 mm).

Modular-system aluminium platform trolley as Variomobile

- Sturdy, smooth platform.
- Running gear: 2 swivel and 2 fixed castors, corner-mounted, Ø 160 mm, 40 mm wide, easy running, rubber wheels, "non-marking", roller bearings, thread guards.
- Swivel castors with wheel brakes.
- Supplementary parts to basic model: Smooth, removable ends and side panels (easy subsequent assembly).

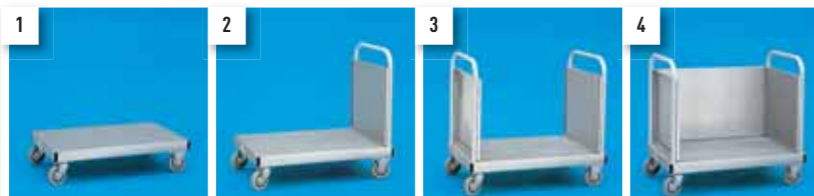
Supplementary set for basic module 40 785:

- Push-Pull bar anodised with end wall
Order No. 40 787
- Aluminium side wall, one-part
Order No. 40 788

Order No.	see No.	Number of shelves	Shelf dimensions (L × W, approx. mm)	Outside dimensions (L × W × H, approx. mm)	Weight (approx. kg)
40 726	–	2	800 × 520	925 × 640 × 870	12.0
40 727	1	3	800 × 520	925 × 640 × 870	16.0

Order No.	see No.	Inside dimensions (L × W × H, approx. mm)	Outside dimensions (L × W × H, approx. mm)	Load capacity (kg)	Weight (approx. kg)
40 785	2	1000 × 655 × 620	1200 × 750 × 1050	300.0	13.2

System variants Variomobile



- 1.) Order No. 40 785
- 2.) Order Nos. 40 785 and 40 787
- 3.) Order Nos. 40 785 and 2 × 40 787
- 4.) Order Nos. 40 785 and 2 × 40 787 and 1 × 40 788

Standard models supplied empty of content.

Individual solutions

ZARGES – the Number 1 for individual solutions

→ Logistics is our element. So we are fully aware that even the most versatile product concept cannot meet all requirements. Our development and design department is at your disposal for complex, customer- and application-specific solutions. With all our experience in aluminium processing, with the technological know-how of the market leader and the creativity of a supplier at home in almost every branch, from chemicals to electronics to the automotive industry, we develop, manufacture and assemble state-of-the-art logistical innovations.

Let the competence of ZARGES help you realise your Just-In-Time or KANBAN solutions!



Steel waste disposal cabinet

Recyclables collection trolley in cabinet form for 1 – 3 × 60-litre collection tubs (PP or steel)

- Steel body, powder-coated in grey (similar to RAL 7040).
- Front side open, with continuous swing flap for labelling.
- Designed for under-table use.
- Top of cabinet can be used as a storage surface.
- 4 corner-mounted swivel castors, Ø 50 mm, rubber wheels.
- Collection tubs easy to operate and lock, easy to replace.

Note:

- Without collection equipment.
- Version in aluminium instead of steel possible (from 30 pieces).



Order No.	Version	Outside dimensions (L × W × H, approx. mm)	Weight (approx. kg)
43 941	1-container	400 × 585 × 785	14.0
43 942	2-container	700 × 585 × 785	21.0
43 943	3-container	1000 × 585 × 785	27.0

Waste collection system

Suitable to accommodate various collection systems (bags, PP bins, nets, etc.)

- Aluminium framed construction, three-sided sheet panel with lids on the top.
- Labelling of the lids possible.
- One sliding handle at either end.
- Running gear: 4 corner-mounted swivel castors, Ø 100 mm, 35 mm wide, easy running, rubber wheels, "non-marking", roller bearings, thread guards.

Note:

This item is not kept in stock. Minimum order 20 pieces.

Accessories:

→ Doors for waste collection system

- 2 aluminium doors for waste collection system with handle holes. Doors are held closed by a magnet.
- 2-container version **Order No. 43 928**
- 3-container version **Order No. 43 927**

→ Suspension frame for bags

- Tubular aluminium frame with suspension bracket. Anodised, riveted base sheet. Anodised, hinged lid with handle. Labelling of lid possible.
- Order No. 43 931**



Order No.	Version	Outside dimensions (L × W × H, approx. mm)	Weight (approx. kg)
43 921	2-container	700 × 610 × 950	13.5
43 922	3-container	1000 × 610 × 950	18.0

Standard models supplied empty of content.

Bin for recyclable glass

Aluminium shelf trolley with 3 shelving levels

- Shelves suitable for holding one 600 × 400 mm collection box or two 400 × 300 mm boxes.
- Shelf load capacity approx. 25 kg.
- One sliding handle at either end.
- Labelling possible on the front of the shelves.
- Running gear: 4 corner-mounted swivel castors, Ø 100 mm, 35 mm wide, easy running, rubber wheels, "non-marking", roller bearings, thread guards.



Order No.	Outside dimensions (L × W × H, approx. mm)	Shelf heights (approx. mm)	Weight (approx. kg)
43 924	720 × 520 × 1155	160 / 590 / 1035	13.5

Triple-compartment waste collection station, steel

Recyclables collection station in cabinet form for 3 bins

- Suitable for accommodating 60-litre collecting bins (PP or steel) or 60-litre refuse bags.
- Sheet-steel body, surface-protected (powder-coated in grey similar to RAL 7040).
- Suitable for use outdoors.
- Protected from rain by recessed feed shafts and sloping sheet metal cover.
- Guide rail and holding frame for collecting bags inside.
- Front side with 2 lockable doors and 3 drop-in openings with moving swing flaps.
- Labelling of the swing flaps possible.



Order No.	Outside dimensions (L × W × H, approx. mm)	Weight (approx. kg)
43 937	980 × 590 × 1000	48.0

Recyclables collector

Aluminium recyclables bin, anodised

- Sturdy edge and base profile.
- Smooth side walls.
- Stackable.

Accessories:

- Anodised separate aluminium lid, fits 40 747.

Order No. 40 757



Order No.	Inside dimensions (L × W × H, approx. mm)	Contents (approx. l)	Weight (approx. kg)
46 084	300 × 264 × 493	39	2.6
40 747	300 × 300 × 500	45	3.0

Standard models supplied empty of content.

Transportation container, mobile

Aluminium transportation container for disposal in accordance with data-protection provisions

- Sturdy edge and base profile.
- End and side walls reinforced with peripheral beading and corner beads.
- Profile-reinforced, hinged lid with slot approx. 420 x 24 mm with sheet metal security flap.
- One galvanised-steel snap fastener.
- One sliding handle on the wheel side.
- Running gear: Axle tube with 2 rubber wheels, Ø 200 mm.



Order No.	Inside dimensions (L x W x H, approx. mm)	Overall width (approx. mm)	Contents (approx. l)	Weight (approx. kg)
40 896	450 x 550 x 980	580	240	15,0

Further accessories



PE collection box

→ Enclosed design, stackable with outer ribs. End faces with handle holes.

→ **Type A** (Fig. 1)
Dimensions (L x W x H): approx. 600 x 400 x 280 mm
Weight approx.: 2.5 kg

→ **Order No. 43 925**



→ **Type B** (Fig. 2)
Dimensions (L x W x H): approx. 400 x 300 x 270 mm
Weight approx.: 1.3 kg

→ **Order No. 43 926**



PP recyclables collector with lid (Fig. 3)

→ Fits: 43 941 - 43 943, 43 921, 43 922, 43 937
Dimensions (L x W x H): approx. 550 x 280 x 580 mm
Weight approx.: 3.0 kg

→ **Order No. 43 923**

→ **Lid for PP bin**
2/3 of front area folds back with hinged connection.

Order No. 43 933



Steel recyclables case

→ Can be used as a single collector and for various recyclables stations.

→ Smooth, enclosed, welded construction, powder-coated, rectangular, tapered, end face with handle edges.

→ Fits: 43 941, 43 942, 43 943, 43 937

→ Dimensions (L x W x H): approx. 540 x 280 x 590 mm
→ Weight approx.: 8.0 kg

→ **Order No. 43 940**

Identification plates (Fig. 4)

→ **1 set of plates, self-adhesive.**

→ With **labelling**; consisting of 1 each: paper, residual waste, biological waste, glass, cardboard, film, metal, plastic

→ Dimensions (L x W): approx. 220 x 75 mm
→ **Order No. 43 944**

→ **1 set of plates, self-adhesive.**

→ With **pictograms**; consisting of 1 each: residual waste, paper/cardboard, glass, tin plate, film/plastic

→ Dimensions (L x W): approx. 120 x 80 mm
→ **Order No. 43 945**

LDPE bags, blue

→ 11 box containing 10 rolls of 25 bags, thickness 45 µ.

→ Fits: 43 923 and 43 940

→ Volume: 60 litres
→ **Order No. 43 830**

Standard models supplied empty of content.



Order No.	Page	Order No.	Page	Order No.	Page	Order No.	Page
3001	87	40 669	84	40 792	53	40 887	80
3002	87	40 673	84	40 810	19	40 888	80
3004	87	40 674	75	40 810 GGV	55	40 889	80
3005	87	40 675	72, 75	40 830	23	40 896	73
3006	87	40 677	19	40 831	23	40 890	86
3007	87	40 677 GGV	55	40 832	23	40 891	85
3008	81	40 678	19	40 833	23	40 893	85
3060	87	40 678 GGV	55	40 834	23	40 895	73
3062	80	40 680	49	40 835	19	41 701	41
40 500	33	40 691	76	40 835 GGV	55	41 702	41
40 501	33	40 692	76	40 836	19	41 703	41
40 502	33	40 693	76	40 836 GGV	55	41 704	41
40 503	33	40 694	76	40 837	19	41 705	41
40 504	33	40 695	74	40 837 GGV	55	41 706	41
40 505	33	40 696	74	40 838	19	41 708	53
40 506	33	40 697	77	40 838 GGV	55	41 709	53
40 551	48	40 698	77	40 839	19	41 710	47
40 552	48	40 716	34	40 839 GGV	55	41 711	47
40 553	48	40 720	34	40 840	19	41 712	47
40 554	48	40 721	34	40 840 GGV	55	41 841	47
40 555	48	40 722	34	40 841	19	43 752	46
40 558	75	40 723	34	40 841 GGV	55	43 753	46
40 559	75	40 724	34	40 842	19	43 754	46
40 564	19	40 725	34	40 842 GGV	55	43 755	46
40 564 GGV	55	40 726	90	40 843	19	43 756	46
40 565	19	40 727	90	40 843 GGV	55	43 757	46
40 565 GGV	55	40 730	22	40 844	19	43 758	46
40 566	19	40 731	22	40 844 GGV	55	43 759	46
40 566 GGV	55	40 735	25	40 845	19	43 760	46
40 567	19	40 736	25	40 845 GGV	55	43 761	46
40 567 GGV	55	40 738	27	40 846	19	43 762	46
40 568	19	40 739	27	40 846 GGV	55	43 763	46
40 568 GGV	55	40 740	27	40 847	19	43 764	46
40 580	19	40 741	26	40 847 GGV	55	43 765	46
40 580 GGV	55	40 742	26	40 848	19	43 766	46
40 607	49	40 747	93	40 848 GGV	55	43 767	46
40 608	49	40 756	79	40 849	19	43 768	46
40 609	49	40 757	93	40 849 GGV	55	43 769	46
40 623	80	40 758	35	40 851	35	43 770	46
40 626	22	40 763	40	40 852	35	43 771	46
40 627	22	40 763 GGV	58	40 855	37	43 772	46
40 628	34	40 764	40	40 856	37	43 815	38
40 631	72	40 764 GGV	58	40 857	37	43 816	38
40 633	75	40 765	40	40 859	19	43 817	38
40 634	78	40 765 GGV	58	40 859 GGV	55	43 830	94
40 635	72	40 766	40	40 864	22	43 831	60
40 644	79	40 766 GGV	58	40 865	22	43 832	60
40 645	79	40 780	78	40 866	22	43 845	38
40 646	79	40 781	48	40 872	47	43 846	38
40 647	79	40 782	48	40 873	47	43 847	38
40 650	78	40 783	48	40 874	47	43 860	24
40 654	72	40 785	90	40 875	19	43 861	24
40 661	78	40 787	90	40 875 GGV	55	43 862	24
40 666	84	40 788	90	40 876	19	43 863	24
40 667	84	40 790	53	40 876 GGV	55	43 864	24

Order No.	Page	Order No.	Page	Order No.	Page	Order No.	Page
43 865	24	45 073 GGV	63	46 278	67	46 850	43
43 866	24	45 075	39	46 279	67	46 851	43
43 867	24	45 076	39	46 650	43	46 852	43
43 868	24	45 077	39	46 651	43	46 860	43
43 869	24	45 096	49	46 660	43	46 861	43
43 870	24	45 097	49	46 661	43	46 880	44
43 871	24	45 131 GGV	57	46 671	44	46 881	44
43 872	24	45 133 GGV	57	46 672	44	46 882	44
43 873	24	45 135 GGV	57	46 680	43	46 890	43
43 874	24	45 137 GGV	57	46 681	43	46 891	43
43 875	24	45 138 GGV	57	46 682	43	46 892	43
43 876	24	45 141 GGV	57	46 690	43	46 900	43
43 877	24	45 142 GGV	57	46 691	43	46 901	43
43 878	24	45 144 GGV	57	46 692	43	46 910	43
43 879	24	45 145 GGV	57	46 700	44	46 911	43
43 880	24	45 146 GGV	57	46 701	44	46 912	43
43 881	24	45 162	64	46 702	44	46 920	43
43 882	24	45 172	64	46 704	44	46 921	43
43 884	24	45 173	65	46 710	43	46 922	43
43 885	24	45 174	65	46 711	43	46 930	43
43 886	24	45 175	65	46 712	43	46 931	43
43 887	24	45 182	64	46 720	43	46 932	43
43 888	24	45 183	65	46 721	43	46 940	43
43 910	86	45 184	65	46 722	43	46 941	43
43 921	92	45 185	65	46 730	43	46 942	43
43 922	92	46 000	68	46 731	43	46 950	43
43 923	94	46 005	68	46 732	43	46 951	43
43 924	93	46 011	68	46 740	43	46 952	43
43 925	94	46 020	69	46 741	43	46 960	43
43 926	94	46 022	69	46 742	43	46 961	43
43 927	92	46 023	69	46 750	43	46 970	43
43 928	92	46 024	69	46 751	43	46 971	43
43 931	92	46 026	69	46 752	43	46 980	43
43 933	94	46 027	68	46 760	43	46 981	43
43 937	93	46 028	68	46 761	43	46 982	43
43 940	94	46 029	68	46 762	43	46 988	44
43 941	92	46 030	68	46 770	43	46 989	23
43 942	92	46 034	68	46 771	43	48 011	48
43 943	92	46 035	68	46 772	43	48 014	48
43 944	94	46 060	69	46 780	43	61 963	55
43 945	94	46 072	67	46 781	43	61 964	55
45 036	53	46 079	67	46 789	23	309 580	41
45 037	53	46 084	93	46 790	43	309 581	41
45 050	53	46 140	67	46 791	43	309 582	41
45 051	53	46 141	67	46 792	43	309 583	41
45 052	53	46 200	68	46 800	43	309 584	41
45 053	53	46 202	68	46 801	43	309 585	41
45 054	53	46 270	67	46 810	43	327 412	72
45 055	53	46 271	67	46 811	43	339 147	72, 75
45 056	53	46 272	67	46 820	43	342 856	60
45 057	53	46 273	67	46 821	43	342 971	60
45 058	53	46 274	67	46 830	43	357 001	26
45 070	39	46 275	67	46 831	43	357 976	26
45 070 GGV	63	46 276	67	46 840	43		
45 073	39	46 277	67	46 841	43		

Please note that personal data maintained in respect of our business relationship or in conjunction with it, regardless of whether such data originates from the purchaser/supplier himself or from third parties, will be processed within the purport of the Federal Data Protection regulations.

1.) The following terms of payment and delivery apply to all orders. Any deviations from these terms and conditions must be agreed in writing.

2.) Our quotations are subject to change without notice. Orders, together with verbal arrangements of whatsoever nature, will not be deemed accepted until confirmed by us in writing and in a legally binding form. The customer's terms and conditions of purchase are not legally binding on us, even if not expressly contradicted.

3.) Illustrations, drawings, measurements and weights are not binding, even when incorporated in brochures, price lists and other printed matter. We reserve the right to make changes without notice. We retain copyright and title in respect of cost estimates, drawings and other documents. They may not be made accessible to third parties; this does not apply to customers who sell our products on in the course of their business or trade, in their own name and for their own or for a third-party account. Drawings and other documents pertaining to quotations must be returned to us immediately on request or if the contract is not awarded to the supplier.

In the case of contracts relating to the fabrication of parts in accordance with a sample or drawings, a margin of approximately 5 % of the quantity is reserved. For contracts of this nature, a reference sample will, on request, be submitted for appraisal prior to commencement of series production.

If tolerances or DIN standards are not indicated in contract drawings, those generally applicable in our plant shall apply.

Unless otherwise agreed, special tools for performance of these contracts will be invoiced at cost and remain our property. Following performance of the contract, the tools – unless otherwise agreed – will be stored on our premises for the period of one year, without our incurring any obligation or liability. On expiry of this period, the tools will be destroyed.

4.) Prices are quoted in euros and ex-works Weilheim/Obb., excluding packaging, unless other arrangements have been concluded in writing.

The agreed prices are net prices. They are fixed prices if this is specifically agreed, otherwise they will remain fixed if, up to the date of issue of the invoice, no material change has occurred in the price of raw materials and the wage rates applicable in our company. The following are regarded as material changes; if, by the specified date, raw material prices increase or fall by more than 2 % and/or the average wage rates applicable to our company increase or fall by more than 2 %.

Prices are only valid if the construction features as specified in our quotation/order confirmation are maintained. If at any time prior to or during the production process additional costs or costs arising from modifications are incurred, the customer will be notified of these costs and proof of such costs will be presented to him for confirmation.

In as far as delivery has already been effected in full or in part by us prior to the invoice being issued, the relevant delivery date for the above sales will apply instead of the date of issue of the invoice.

5.) Packing costs will be borne by the customer. Cases, baskets and similar packaging will be taken back at 4/5 of the invoiced price if returned to us within 4 weeks, in good condition and with the full complement of packaging material and free of all charges.

6.) Delivery is effected at the customer's risk, even where delivery carriage paid is agreed upon. If no specifications are made with regard to shipment, we will exercise our best judgment in selecting the most suitable method of shipment for the goods, but without incurring any responsibility. For invoicing, the weights and quantities established at the time of shipment shall apply.

We are under no obligation to effect a replacement delivery in the case of losses, wrong delivery or damage during transport. Damage sustained by the goods in transit does not entitle the customer, even in the case of group consignments, to any claim for loss of profit or

compensation for costs arising from dismantling, assembling, processing or repairing the faulty goods, nor to cancel the order.

7.) The delivery dates are non-binding and will be adhered to by us to the best of our ability. The delivery period commences on the day on which all details relating to execution of the order are clarified and the contracting parties are in agreement on all terms and conditions of business. The delivery period relates to completion of the order at the factory. Unexpected occurrences which lie outside our power, such as instances of force majeure, breakdowns of any kind in production, stoppage of work, lockout, late receipt of materials etc. at our premises or those of our suppliers will extend the delivery period correspondingly.

8.) Manufacture is effected in accordance with the current state of technology. Materials are selected in a suitable manner in accordance with the valid DIN standards, and the load capacity required in the specifications is guaranteed by means of appropriate dimensioning.

As regards custom-made models made to customer specifications, manufacture will take place in accordance with acknowledged technological procedures, but we accept no liability in respect of these items for accidents or any consequences resulting therefrom. We cannot be held liable for errors resulting from the documents and information (drawings, samples etc.) specified by the customer.

9.) Any defects such as complaints regarding the weight, quantity or quality of the goods must be filed without delay, as soon as the discrepancy is established and at the latest 2 weeks after receipt of the goods. Any liability with respect to hidden defects becomes null and void 6 months after delivery.

In the event of complaints, the customer is under obligation to give us the opportunity to establish that these are justified. Complaints will not be accepted where modifications have been made to the deliveries which are the subject of the complaint without the agreement of the manufacturer. Likewise, no guarantee can be given for repairs and modifications to the equipment.

If replacement goods are supplied and the customer is still dissatisfied, he is entitled to demand a reduction in the purchase price or cancellation of the contract. Any further claims are excluded. In the event of a proportion of the delivery being faulty, the customer may not derive any rights as regards the remainder of the delivery.

10.) Unless otherwise agreed upon, invoices are payable within 10 days of the date of invoice at 2 % discount or 30 days after date of invoice in full and in cash. Payment is considered to have been effected on the date on which the sum is credited to one of the supplier's accounts.

Tooling charges are payable without deduction immediately on delivery of the reference sample.

Payment by bill of exchange must be agreed upon prior to conclusion of sale. Bills of exchange and cheques will be accepted only on account of payment. The costs for negotiation and collection will be borne by the customer. The customer is only entitled to right of offset where the claim is undisputed or already established in law.

The supplier is entitled, without prejudice to further claims, to claim damages for delay to the amount of the usual minimum interest and commissions charged by the major banks.

11.) We retain the right of title to the goods supplied by us and to any item which has resulted from processing or machining on your part pending fulfilment of all claims to which we may be entitled now or in the future against the customer based on our business association. The customer is under obligation to store and mark these goods separately.

Processing or machining is carried out by the customer on our behalf without our incurring any liability. Should the customer process reserved goods with other goods, we are entitled to joint ownership of the new items in the ratio of the value of the processed reserved goods to the other goods at the time of processing or machining. The customer transfers any proportion in joint ownership that may arise through connecting, commixture or compounding with other items to us with immediate effect. The customer will hold the items in safekeeping for us in accordance with the principles of due diligence.

The customer may dispose of the reserved goods only in the regular course of business and against cash payment or subject to transfer of our retention of property. Assignment as collateral or other provisions jeopardising our rights are not permitted.

Any rights arising for the customer from the sale of the goods to a third party are assigned to us with immediate effect as security to the amount of the value of the goods disposed of or the proceeds of sale if this is less than the value of the goods. If the reserved goods are sold by the customer together with other goods, the customer transfers to us the claim to the full purchase price of the reserved goods or, in the event of prior processing or machining together with other goods which do not belong to us, to the value of the processed reserved goods. If a sale of this nature is effected at an all-inclusive price, the customer assigns to us the claim to the purchase price to the value of the reserved goods which form the object of the said transaction.

As long as the customer meets his obligations, such assignment shall be considered as a non-disclosed agreement, and the customer is entitled to recover the debt. The customer is under obligation to record the incoming amounts relating to the assigned claims separately in his accounts and to keep them separate.

Should the value of the security exceed our claim by more than 20 %, the customer is entitled to demand the release of the security.

The customer must notify us immediately of any access by third parties to the reserved goods or the assigned claims and pass on the corresponding documents to us. The customer bears any intervention costs.

The enforcement of retention of title and any claim for possession in accordance with these conditions do not constitute a withdrawal from the contract.

12.) Special technical delivery conditions for ladders and steps of all kinds.

Manufacture is effected based on the appropriate standards. Above and beyond this, the provisions of the law relating to technical equipment (Safety of Machinery Act) of 24.06.1968 apply.

The same applies to the provisions of the Accident Prevention Regulations for Ladders and Steps BGV D 36 (formerly VBG 74) including implementation clauses and notes issued by the trade associations, in as far as they impose obligations on the manufacturer.

We carry out testing within the framework of our internal quality controls. In general, no certificates are issued with respect to these tests. If an agent commissioned by the customer is to carry out additional tests, the following agreements must be reached at the point of enquiry and on award of the contract:

- a) Name of the agent
- b) Type of test to be carried out
- c) Number of samples (guide values may be given here.)
- d) Any further requirements.

The respective agent will issue an acceptance certificate for the test. Where costs arise as a result of special acceptance tests and static calculations, such costs will be charged to the customer.

Ladders, steps and similar products must be used in a manner appropriate to the purpose for which they are intended and in accordance with the instructions for use where applicable. We accept no liability for damage or accidents resulting from inappropriate use. This also applies to consequential damage. The buyers or users of ladders must observe the accident prevention regulations issued by the trade associations together with the implementation clauses and instructions thereto.

13.) Place of jurisdiction is Weilheim/Obb. The law of the Federal Republic of Germany applies.

14.) Customer and manufacturer may only transfer their rights under the contract to third parties by mutual agreement.

15.) The contract remains binding even in the event of invalidity of individual provisions therein.

ZARGES GmbH
Headquarters: Weilheim/Obb.
Registry Court : München HRB 169642
ILN 40 03866 00000 5
Directors:
Bernd Göpfert, Frank Haberstroh, Dieter Reis

Visit ZARGES on the Internet!

➔ At www.zarges.com you will find all you need to know about our product range and logistics equipment.

Information also includes the latest news from the industry, on trade fairs and from the ZARGES company.

And all that right at your fingertips: A maximum of three clicks takes you from our home page to any information you require.

Our Internet site offers further useful functions:

- ➔ **Note and comparison function** – select different products from a list and compare them directly with each other.
- ➔ **A wide variety of search options** – find the products you require and the person to contact at ZARGES quickly and easily.
- ➔ **Creating a quotation** – solicit a quotation for the products you have selected.
- ➔ **Download** – all product catalogs are available for download.
- ➔ **A variety of languages available** – you will now find the product catalogs for logistics equipment and access technology in several languages at www.zarges.com.
- ➔ **Note:** Some items are not always immediately available from stock. Production leadtimes apply.

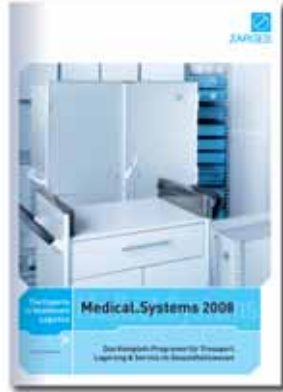
Contact ZARGES directly: www.zarges.com

→ **Contact ZARGES directly**



→ **Hi-Tech Containers**

Mitraset 19" housing and other packaging solutions for complex applications in the fields of the armed forces, aviation and aerospace and electronics.



→ **Medical Systems**

Planning, manufacture and installation of concepts and products tailored to the specific requirements of hospital logistics. Safe and efficient supply of medical products, medication, laundry and food to wards and patients, ensuring reliable allocation and highly economical processes.



→ **Access technology**

Ladders, scaffolding, platforms, assembly lifts and other access equipment for industry and the services sector, for the trades, craftsmen and private use.

→ www.zarges.com



ZARGES GmbH

Postfach 1630
D-82360 Weilheim

Tel.: +49-(0)881-687-130
Fax: +49-(0)881-687-440

industrial.systems@zarges.de
www.zarges.com