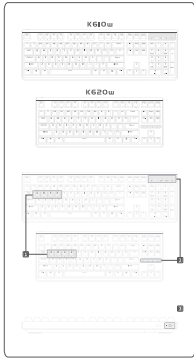


ABOUT DEVICE



1. SHORTCUT KEYS

F1	Fn+F1	Switch to Bluetooth device 1
F2	Fn+F2	Switch to Bluetooth device 2
F3	Fn+F3	Switch to 2.4GHz wireless connection mode
F4	Fn+F4	Switch to USB connection mode
F5	Fn+F5	Enter the command line configuration profile

2. INDICATOR LIGHTS

Light 1	Power
Light 2	Bluetooth
Light 3	2.4GHz Wireless
Light 4	USB
Light 5	Macro

3. WIRELESS SWITCH



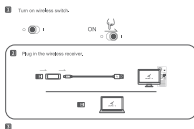
CONNECTION SPECIFICATIONS

Bluetooth	Frequency range: 2402MHz-2483MHz, Transmitter power: 1 dBm
2.4GHz Wireless	Frequency range: 2402MHz-2483MHz, Transmitter power: 1 dBm
USB	Frequency range: 2402MHz-2483MHz, Transmitter power: 1 dBm

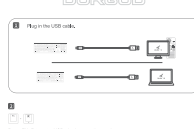
BLUETOOTH CONNECTION



2.4GHz WIRELESS CONNECTION



USB CONNECTION



LEARN MORE

Check out www.durgod.com and download "Durgod Root Engine" for get:

- The Best Firmware Update
- Easy key customization
- Macro/adding function
- Onboard and cloud storage configuration profiles
- The Most Information on Durgod products

REGULATORY AND COMPLIANCE INFORMATION

FC STATEMENT
This equipment has been tested and found to comply with the limits for a Class B digital device, pursuant to part 15 of the FCC Rules. These limits are designed to provide reasonable protection against harmful interference to a wireless communication system. This equipment generates, uses and can radiate radio frequency energy and, if not properly installed and used, may cause interference to wireless communication. However, there is no guarantee that interference will not occur in a particular installation. If you experience interference, you are encouraged to try to correct the interference by one or more of the following measures:
- Reorient or relocate the receiving antenna.
- Increase the separation between the equipment and the receiver.
- Consult the equipment manufacturer for advice.
- Consult the manufacturer for information on obtaining a list of certified equipment.
The device complies with FCC radiation exposure limits set forth for an uncontrolled environment and is compliant with the FCC Part 15.207 Emission Limits. The equipment must be installed or operated in accordance with any other safety or transport, and must not be used in proximity to sensitive medical equipment and must not be used in the vicinity of aircraft.
FCC Radiation Exposure Statement
This device complies with FCC Part 15.207 of the FCC Rules. Operation is subject to the following two conditions:
1. The device must not cause harmful interference, and
2. The device must accept any interference that may be received, including interference from any other device or transmitter. End user and retailer must be provided with written and/or pictorial instructions and/or labeling regarding the radio-frequency exposure.
STATEMENT OF COMPLIANCE WITH EU DIRECTIVE
Intertek, Zhuhai, China Technology Co., Ltd. declares that the radio equipment type DURGOD K610w/K620w complies with the limits of the Radio and Telecommunications Terminal Equipment (RTE) and the Low Voltage Directive (LVD) 2011/65/EU. The full text of the Declaration of Conformity is available at the following internet address: <http://www.durgod.com>
CAUTION
(1) Use of this equipment is prohibited unless the subject of approval if this notice is marked as "CE" or "FCC" or "UKCA" or "UKCA" or "UKCA" or "UKCA".
(2) Changes to the equipment or the use of accessories not recommended by the manufacturer may void the warranty and may affect the safety of the equipment. Always use proper care.
(3) Do not use the equipment in the vicinity of aircraft or other sensitive equipment. Always use proper care and follow the instructions for use provided with the equipment. Always use proper care and follow the instructions for use provided with the equipment. Always use proper care and follow the instructions for use provided with the equipment.

REGULATORY AND COMPLIANCE INFORMATION

CE Mark Statement
This device contains a lithium-ion battery (model: 10200mAh) that complies with the requirements of the European Union (EU) Directive 2006/66/EC (RoHS Directive). Operation is subject to the following conditions:
(1) This device and its components must be disposed of in accordance with the applicable local, state, and federal laws and regulations.
(2) This device must be used in accordance with the instructions for use provided with the device.
(3) This device must be used in accordance with the instructions for use provided with the device.
(4) This device must be used in accordance with the instructions for use provided with the device.
(5) This device must be used in accordance with the instructions for use provided with the device.
(6) This device must be used in accordance with the instructions for use provided with the device.
(7) This device must be used in accordance with the instructions for use provided with the device.
(8) This device must be used in accordance with the instructions for use provided with the device.
(9) This device must be used in accordance with the instructions for use provided with the device.
(10) This device must be used in accordance with the instructions for use provided with the device.
(11) This device must be used in accordance with the instructions for use provided with the device.
(12) This device must be used in accordance with the instructions for use provided with the device.
(13) This device must be used in accordance with the instructions for use provided with the device.
(14) This device must be used in accordance with the instructions for use provided with the device.
(15) This device must be used in accordance with the instructions for use provided with the device.
(16) This device must be used in accordance with the instructions for use provided with the device.
(17) This device must be used in accordance with the instructions for use provided with the device.
(18) This device must be used in accordance with the instructions for use provided with the device.
(19) This device must be used in accordance with the instructions for use provided with the device.
(20) This device must be used in accordance with the instructions for use provided with the device.
(21) This device must be used in accordance with the instructions for use provided with the device.
(22) This device must be used in accordance with the instructions for use provided with the device.
(23) This device must be used in accordance with the instructions for use provided with the device.
(24) This device must be used in accordance with the instructions for use provided with the device.
(25) This device must be used in accordance with the instructions for use provided with the device.
(26) This device must be used in accordance with the instructions for use provided with the device.
(27) This device must be used in accordance with the instructions for use provided with the device.
(28) This device must be used in accordance with the instructions for use provided with the device.
(29) This device must be used in accordance with the instructions for use provided with the device.
(30) This device must be used in accordance with the instructions for use provided with the device.
(31) This device must be used in accordance with the instructions for use provided with the device.
(32) This device must be used in accordance with the instructions for use provided with the device.
(33) This device must be used in accordance with the instructions for use provided with the device.
(34) This device must be used in accordance with the instructions for use provided with the device.
(35) This device must be used in accordance with the instructions for use provided with the device.
(36) This device must be used in accordance with the instructions for use provided with the device.
(37) This device must be used in accordance with the instructions for use provided with the device.
(38) This device must be used in accordance with the instructions for use provided with the device.
(39) This device must be used in accordance with the instructions for use provided with the device.
(40) This device must be used in accordance with the instructions for use provided with the device.
(41) This device must be used in accordance with the instructions for use provided with the device.
(42) This device must be used in accordance with the instructions for use provided with the device.
(43) This device must be used in accordance with the instructions for use provided with the device.
(44) This device must be used in accordance with the instructions for use provided with the device.
(45) This device must be used in accordance with the instructions for use provided with the device.
(46) This device must be used in accordance with the instructions for use provided with the device.
(47) This device must be used in accordance with the instructions for use provided with the device.
(48) This device must be used in accordance with the instructions for use provided with the device.
(49) This device must be used in accordance with the instructions for use provided with the device.
(50) This device must be used in accordance with the instructions for use provided with the device.
(51) This device must be used in accordance with the instructions for use provided with the device.
(52) This device must be used in accordance with the instructions for use provided with the device.
(53) This device must be used in accordance with the instructions for use provided with the device.
(54) This device must be used in accordance with the instructions for use provided with the device.
(55) This device must be used in accordance with the instructions for use provided with the device.
(56) This device must be used in accordance with the instructions for use provided with the device.
(57) This device must be used in accordance with the instructions for use provided with the device.
(58) This device must be used in accordance with the instructions for use provided with the device.
(59) This device must be used in accordance with the instructions for use provided with the device.
(60) This device must be used in accordance with the instructions for use provided with the device.
(61) This device must be used in accordance with the instructions for use provided with the device.
(62) This device must be used in accordance with the instructions for use provided with the device.
(63) This device must be used in accordance with the instructions for use provided with the device.
(64) This device must be used in accordance with the instructions for use provided with the device.
(65) This device must be used in accordance with the instructions for use provided with the device.
(66) This device must be used in accordance with the instructions for use provided with the device.
(67) This device must be used in accordance with the instructions for use provided with the device.
(68) This device must be used in accordance with the instructions for use provided with the device.
(69) This device must be used in accordance with the instructions for use provided with the device.
(70) This device must be used in accordance with the instructions for use provided with the device.
(71) This device must be used in accordance with the instructions for use provided with the device.
(72) This device must be used in accordance with the instructions for use provided with the device.
(73) This device must be used in accordance with the instructions for use provided with the device.
(74) This device must be used in accordance with the instructions for use provided with the device.
(75) This device must be used in accordance with the instructions for use provided with the device.
(76) This device must be used in accordance with the instructions for use provided with the device.
(77) This device must be used in accordance with the instructions for use provided with the device.
(78) This device must be used in accordance with the instructions for use provided with the device.
(79) This device must be used in accordance with the instructions for use provided with the device.
(80) This device must be used in accordance with the instructions for use provided with the device.
(81) This device must be used in accordance with the instructions for use provided with the device.
(82) This device must be used in accordance with the instructions for use provided with the device.
(83) This device must be used in accordance with the instructions for use provided with the device.
(84) This device must be used in accordance with the instructions for use provided with the device.
(85) This device must be used in accordance with the instructions for use provided with the device.
(86) This device must be used in accordance with the instructions for use provided with the device.
(87) This device must be used in accordance with the instructions for use provided with the device.
(88) This device must be used in accordance with the instructions for use provided with the device.
(89) This device must be used in accordance with the instructions for use provided with the device.
(90) This device must be used in accordance with the instructions for use provided with the device.
(91) This device must be used in accordance with the instructions for use provided with the device.
(92) This device must be used in accordance with the instructions for use provided with the device.
(93) This device must be used in accordance with the instructions for use provided with the device.
(94) This device must be used in accordance with the instructions for use provided with the device.
(95) This device must be used in accordance with the instructions for use provided with the device.
(96) This device must be used in accordance with the instructions for use provided with the device.
(97) This device must be used in accordance with the instructions for use provided with the device.
(98) This device must be used in accordance with the instructions for use provided with the device.
(99) This device must be used in accordance with the instructions for use provided with the device.
(100) This device must be used in accordance with the instructions for use provided with the device.

保修服务卡

产品型号: _____

购买日期: _____

用户姓名: _____

联系电话: _____

通讯地址/邮编: _____

产品S/N码: _____

售后服务部

保修服务指南

- 感谢您对DURGOD (杜尚) 的信任与支持
- 我们承诺
- 保修服务时须提供
- 质保不包含一下原因导致的问题和损坏:

了解设备



快捷键

F1	Fn+F1	切换至蓝牙设备1
F2	Fn+F2	切换至蓝牙设备2
F3	Fn+F3	切换至2.4GHz无线连接模式
F4	Fn+F4	切换至USB连接模式
F5	Fn+F5	进入命令行配置界面

指示灯

Light 1	电源
Light 2	蓝牙
Light 3	2.4GHz无线
Light 4	USB
Light 5	宏

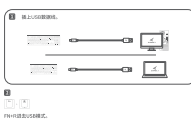
蓝牙设备连接



2.4G 无线连接



USB有线连接



获取更多

获取更多产品信息

- 产品规格表
- 使用指南
- 常见问题解答
- 联系我们

保修服务卡

产品型号: _____

购买日期: _____

用户姓名: _____

联系电话: _____

通讯地址/邮编: _____

产品S/N码: _____

售后服务部

DURGOD

K610w/K620w

QUICK START GUIDE

用户指南