



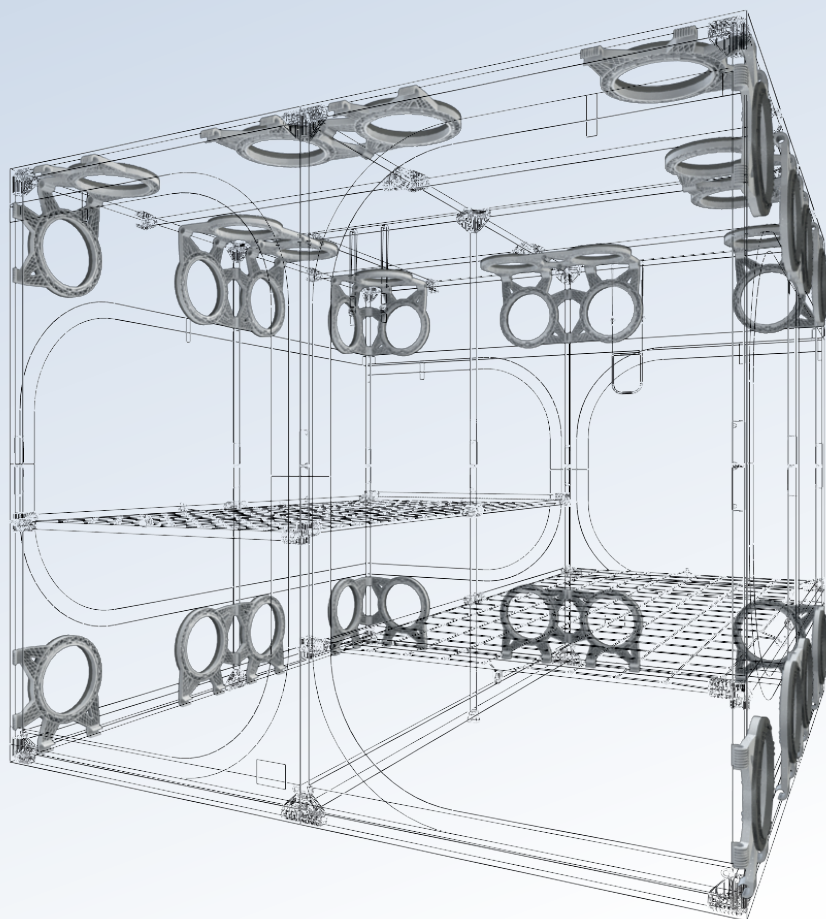
SECRET JARDIN

ASSEMBLY INSTRUCTIONS



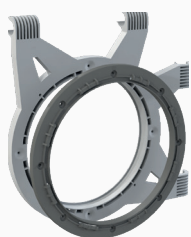
DARK ROOM R4.00

CONNECTABLE





DUCTING FLANGE Ø25



Ducting Flange

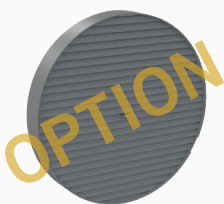


Cutting Tool



Connectors

150 - 160 - 200 - 250 mm
6" - 6½" - 8" - 10"



Light Baffle

CABLE FLANGE Ø7



Cable Flange

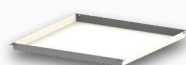


Cutting Tool

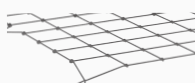
GENERAL



Space Booster



Removable Liner



WebIT



PocketIT



Pair HookIT

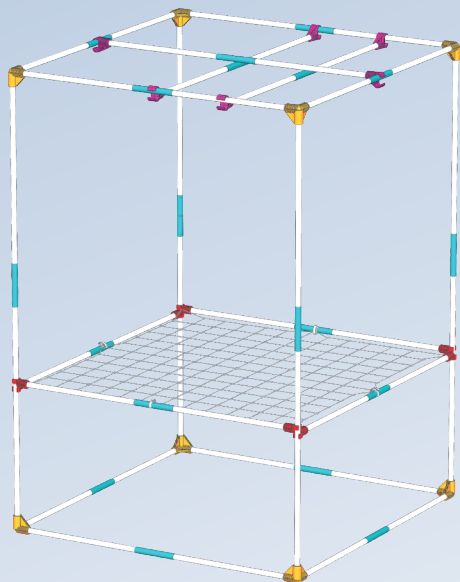
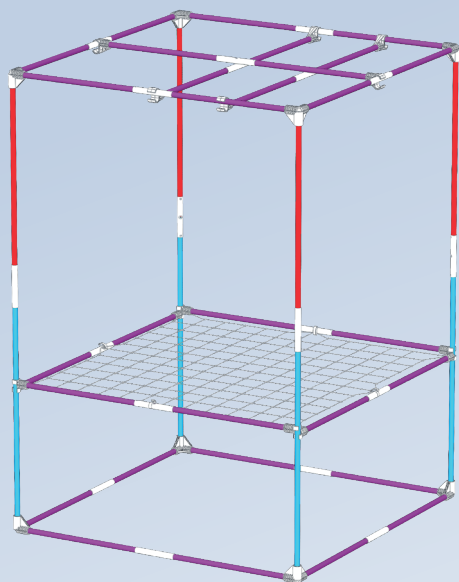


CableIT

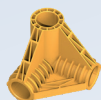


StrapIT

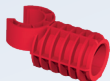
KIT CONTAIN



- 4x T25-120
- 4x T25-100
- 30x T25-75
- 19x T25-Link



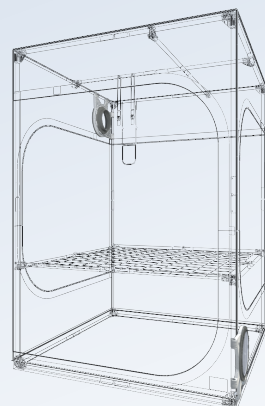
8x C25-Y



8x C25-SB



6x C25-H



**VIDEO ASSEMBLY
TENT DR120**

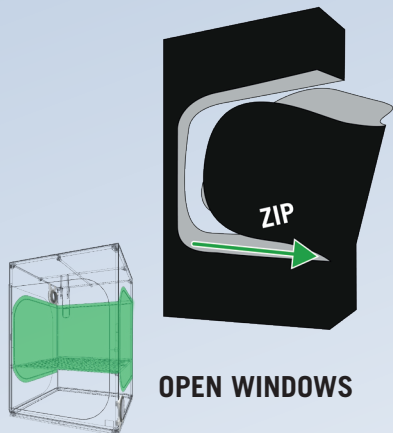


**VIDEO ASSEMBLY
DUCTING FLANGE**

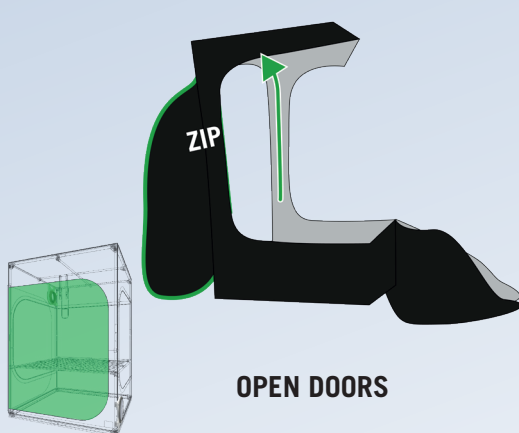


**VIDEO ASSEMBLY
CABLE FLANGE**





OPEN WINDOWS



OPEN DOORS



OPEN ALL ACCESSES **THEN**
PUT THE CANVAS ON



ALLE ZUGÄNGE ÖFFNEN **DANN**
LEGEN SIE DIE LEINWANDE AB



OUVRIER TOUT LES ACCÈS **PUIS**
METTRE LA TOILE



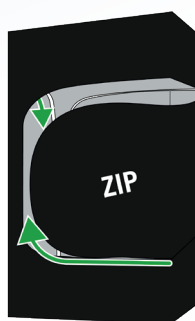
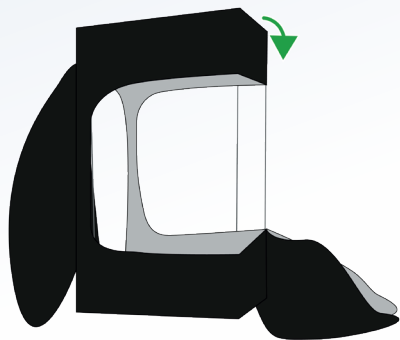
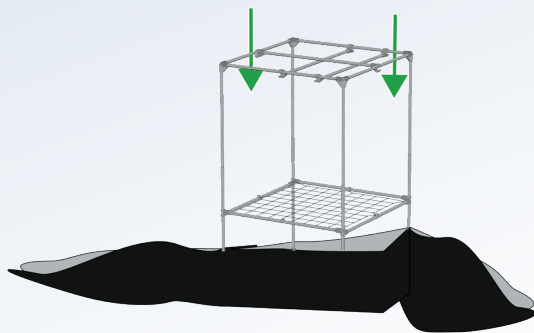
ALLE TOEGANGEN OPENSTELLEN
DAN ZET JE HET DOEK OP

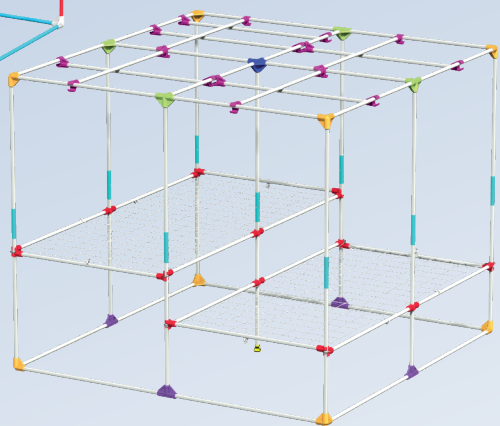
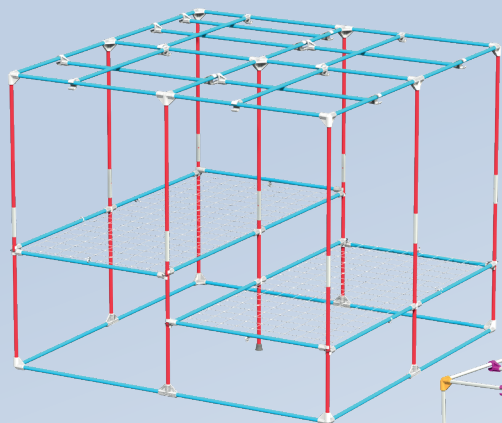


ABRIR TODOS LOS ACCESOS
LUEGO PONTE EL LIENZO



APRIRE TUTTI GLI ACCESSI **POI**
METTERE LA TELA DI CANAPA SU





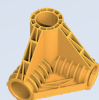
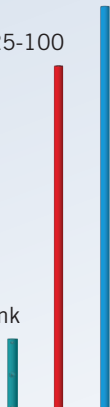
**VIDEO ASSEMBLY
TENT DR300**



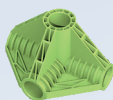
41x T25-120

18x T25-100

9x T25-Link



8x C25-Y



4x C25-K



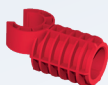
4x C25-T



1x C25-XI



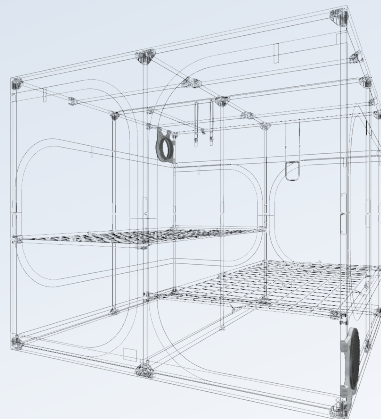
1x C25-RF



24x C25-SB



18x C25-H

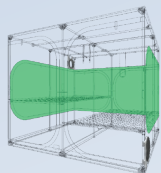
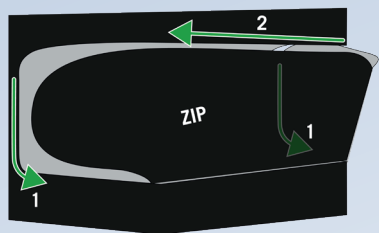


**VIDEO ASSEMBLY
DUCTING FLANGE**

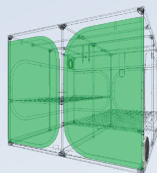
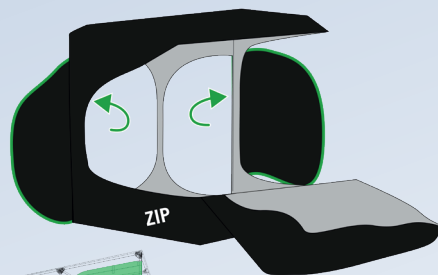


**VIDEO ASSEMBLY
CABLE FLANGE**





OPEN WINDOWS



OPEN DOORS



OPEN ALL ACCESSES **THEN**
PUT THE CANVAS ON



ALLE ZUGÄNGE ÖFFNEN **DANN**
LEGEN SIE DIE LEINWANDE AB



OUVRIER TOUT LES ACCÈS **PUIS**
METTRE LA TOILE



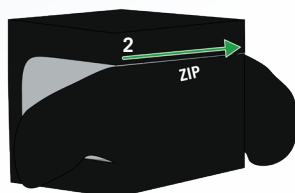
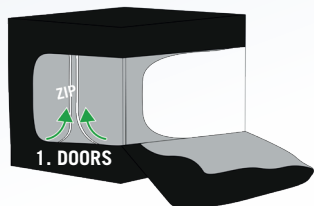
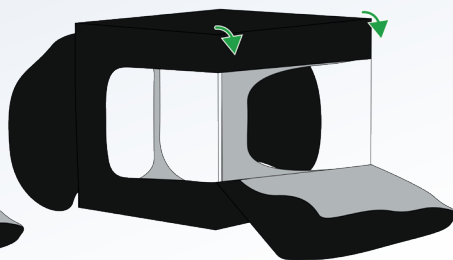
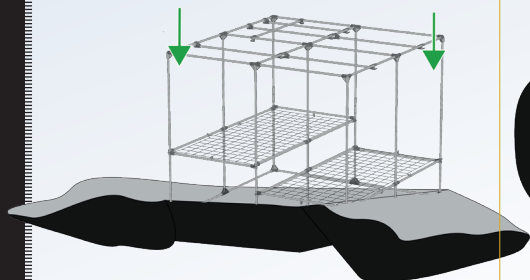
ALLE TOEGANGEN OPENSTELLEN
DAN ZET JE HET DOEK OP



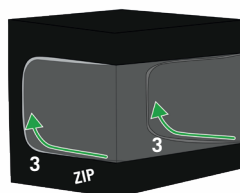
ABRIR TODOS LOS ACCESOS
LUEGO PONTE EL LIENZO



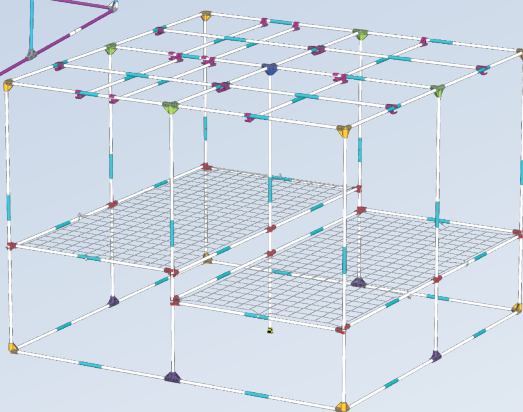
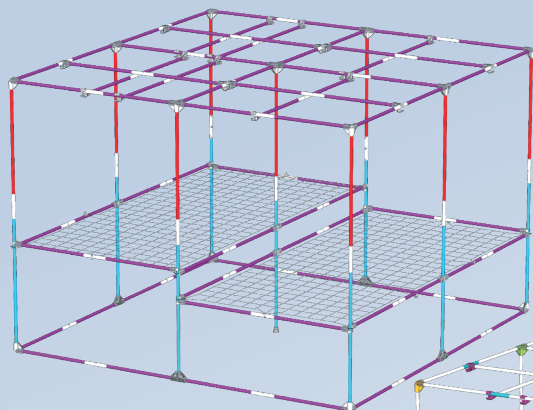
APRIRE TUTTI GLI ACCESSI **POI**
METTERE LA TELA DI CANAPA SU



CLOSE
DETACHABLE ZIP



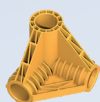
CLOSE ZIP



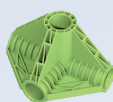
**VIDEO ASSEMBLY
TENT DR300**



- 9x T25-120
- 9x T25-100
- 84x T25-75
- 51x T25-Link



8x C25-Y



4x C25-K



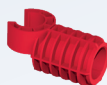
4x C25-T



1x C25-XI



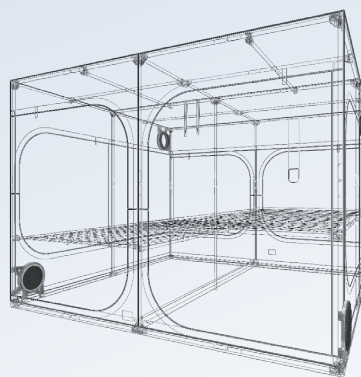
1x C25-RF



24x C25-SB



20x C25-H

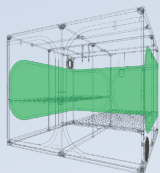
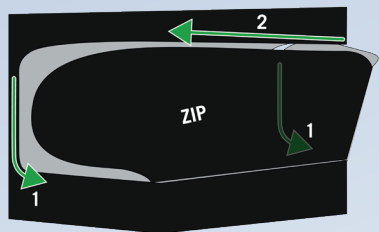


**VIDEO ASSEMBLY
DUCTING FLANGE**

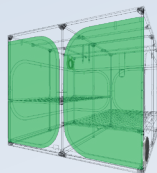
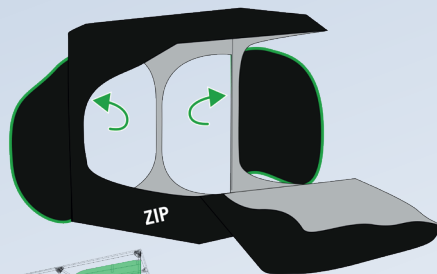


**VIDEO ASSEMBLY
CABLE FLANGE**





OPEN WINDOWS



OPEN DOORS



OPEN ALL ACCESSES **THEN**
PUT THE CANVAS ON



ALLE ZUGÄNGE ÖFFNEN **DANN**
LEGEN SIE DIE LEINWANDE AB



OUVRIER TOUT LES ACCÈS **PUIS**
METTRE LA TOILE



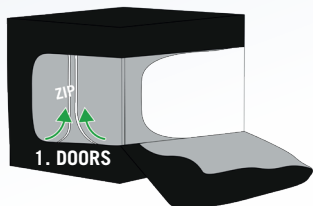
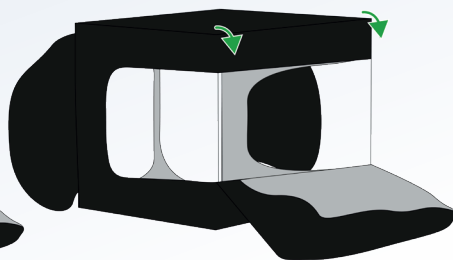
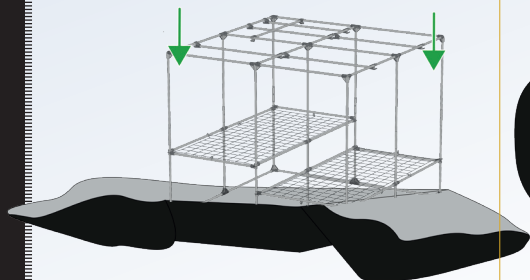
ALLE TOEGANGEN OPENSTELLEN
DAN ZET JE HET DOEK OP



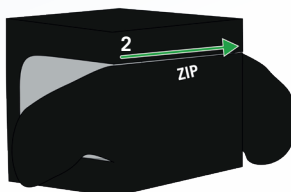
ABRIR TODOS LOS ACCESOS
LUEGO PONTE EL LIENZO



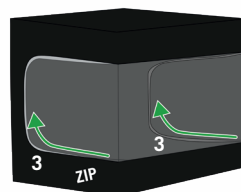
APRIRE TUTTI GLI ACCESSI **POI**
METTERE LA TELA DI CANAPA SU



1. DOORS



CLOSE
DETACHABLE ZIP

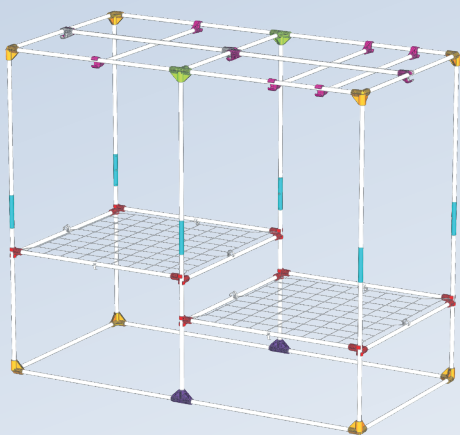
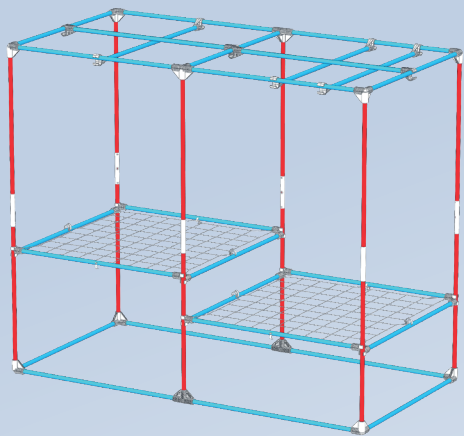


CLOSE ZIP



PROFESSIONAL

DARK ROOM 240W : STRUCTURE ASSEMBLY



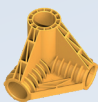
**VIDEO ASSEMBLY
TENT DR240W**



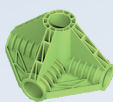
26x T25-120

12x T25-100

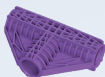
6x T25-Link



8x C25-Y



2x C25-K



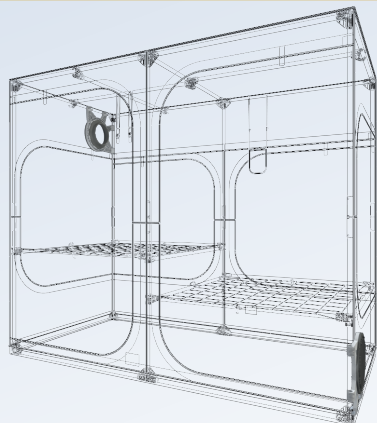
2x C25-T



16x C25-SB



10x C25-H

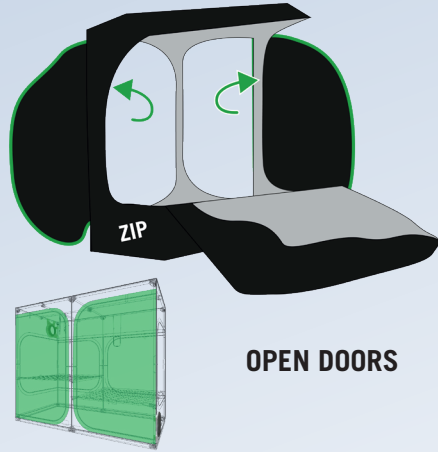
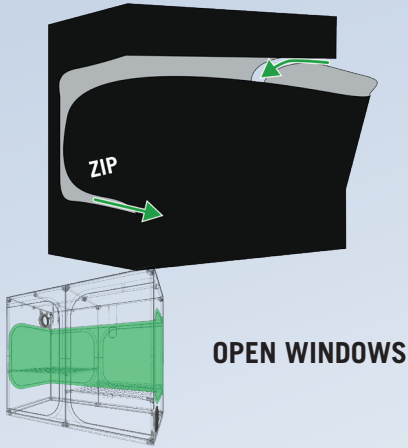


**VIDEO ASSEMBLY
DUCTING FLANGE**



**VIDEO ASSEMBLY
CABLE FLANGE**





**OPEN ALL ACCESSES THEN
PUT THE CANVAS ON**



**ALLE ZUGÄNGE ÖFFNEN DANN
LEGEN SIE DIE LEINWANDE AB**



**OUVRIER TOUT LES ACCÈS PUIS
METTRE LA TOILE**



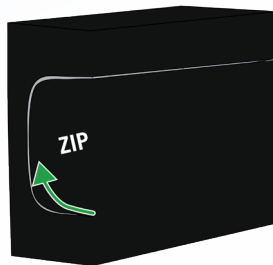
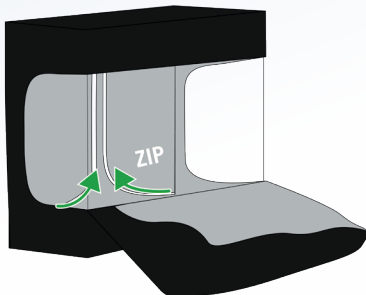
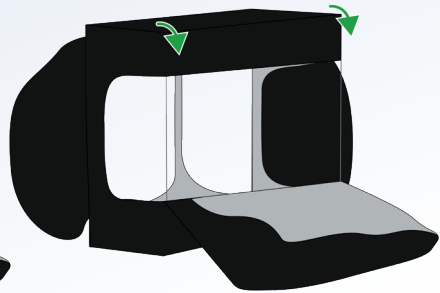
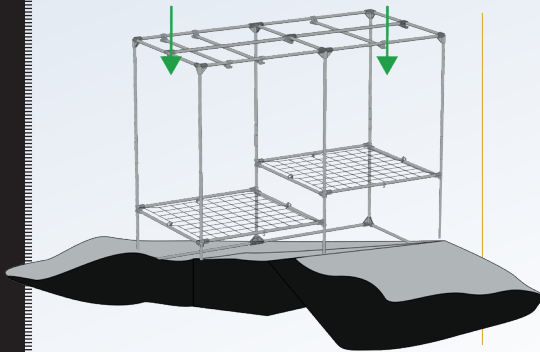
**ALLE TOEGANGEN OPENSTELLEN
DAN ZET JE HET DOEK OP**

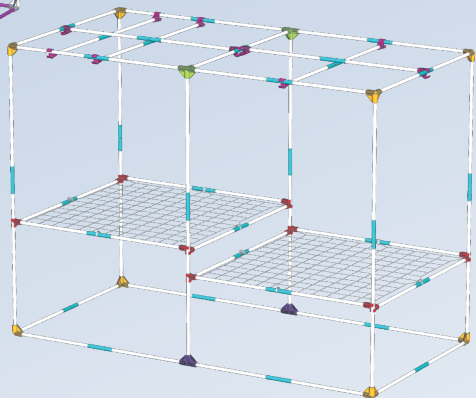
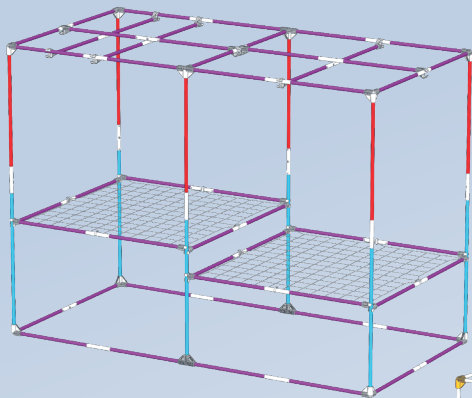


**ABRIR TODOS LOS ACCESOS
LUEGO PONTE EL LIENZO**



**APRIRE TUTTI GLI ACCESSI POI
METTERE LA TELA DI CANAPA SU**

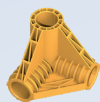




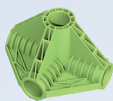
**VIDEO ASSEMBLY
TENT DR240W**



- 6x T25-120
- 6x T25-100
- 52x T25-75
- 32x T25-Link



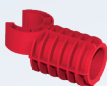
8x C25-Y



2x C25-K



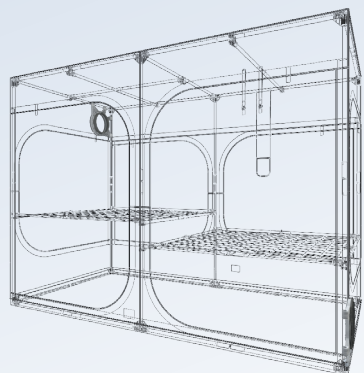
2x C25-T



16x C25-SB



10x C25-H

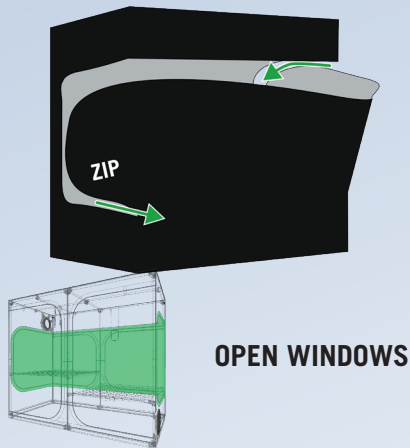


**VIDEO ASSEMBLY
DUCTING FLANGE**

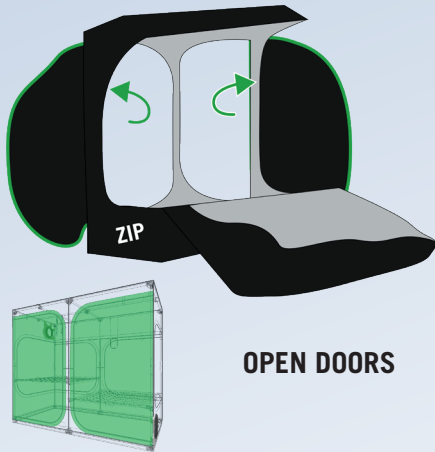


**VIDEO ASSEMBLY
CABLE FLANGE**





OPEN WINDOWS



OPEN DOORS



**OPEN ALL ACCESSES THEN
PUT THE CANVAS ON**



**ALLE ZUGÄNGE ÖFFNEN DANN
LEGEN SIE DIE LEINWANDE AB**



**OUVRIR TOUT LES ACCÈS PUIS
METTRE LA TOILE**



**ALLE TOEGANGEN OPENSTELLEN
DAN ZET JE HET DOEK OP**



**ABRIR TODOS LOS ACCESOS
LUEGO PONTE EL LIENZO**



**APRIRE TUTTI GLI ACCESSI POI
METTERE LA TELA DI CANAPA SU**

