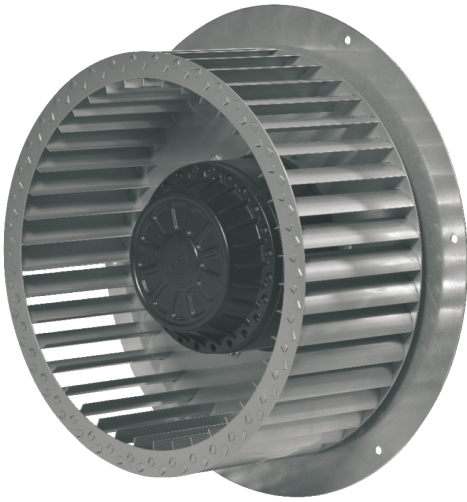


Model:YWF(K)6D500-GQ

Fan type:AC Forward curved centrifugal fan



Manufactory:Zhejiang MingZhen Electric & Electronic Co., Ltd.

ADD:The Central Industry Zone, Chengnan Town,
WenLing City, Zhejiang Province, China

TEL:0086-576-86268888

FAX:0086-576-86268020

Mail:info1@cnsanmu.com

WEB:http://www.cnsanmu.com

Fan Introduction

This product consist of outer rotor(AC)motor, forward curved centrifugal impeller, with features of compact structure, small volume, light weight, convenient installation etc..

Scope of application

General purpose fan, can be widely used in purification of air conditioning systems, ventilation duct dust, environmental protection, refrigeration equipment and other fields.

Environmental requirements

- Operating ambient temperature range:-25℃~+50℃
- Working environment humidity range:≤90%
- Transportation and storage temperature range:-40℃~+80℃
- Transportation and storage environment humidity range:≤80%
- The storage place is well ventilated, corrosive gases not contained.

Model:YWF(K)6D500-GQ

Fan type:AC Forward curved centrifugal fan

Design, manufacturing, testing standards and certification

- JB/T 10563 Technical specification for general purposes centrifugal fans
- GB/T 14711 Safety requirements of small and medium size rotating electrical machines
- GB/T 755/IEC60034-1 Rotating electrical machines - Part 1: Rating and performance
- GB 4706.32-2012/IEC 60335-2-40:2005 Household and similar electrical appliances - Safety - Part 2-40: Particular requirements for electrical heat pumps, air-conditioners and dehumidifiers
- Balance quality grade for rotor is G6.3, in accordance with ISO 1940-1,
- Vibration testing and velocity is performed according to JB/T 8689.
- This product is certified by China CCC and EU CE
- ISO 9001 quality system certification

Technical features

Mass	45.5 kg
Size	φ500 mm
Impeller material	Galvanised sheet steel
Rotation	Counter-clockwise(Seen from cable exit)
Protection class	IP54
Insulation class	F
Mounting	Shaft horizontal or rotor on bottom; rotor on top on request
Mode of operation	S1(Continuous operation)
Bearings	Maintenance-free ball bearings
Thermal protector	Can be built in or out of line according to requirements

Structures

Inlet type	Single Inlet
Impeller type	Forward curved impeller
Housing	Without housing; With inlet ring;

Technical parameters

Supply	3P
Frequency	50 Hz
Motor poles	6

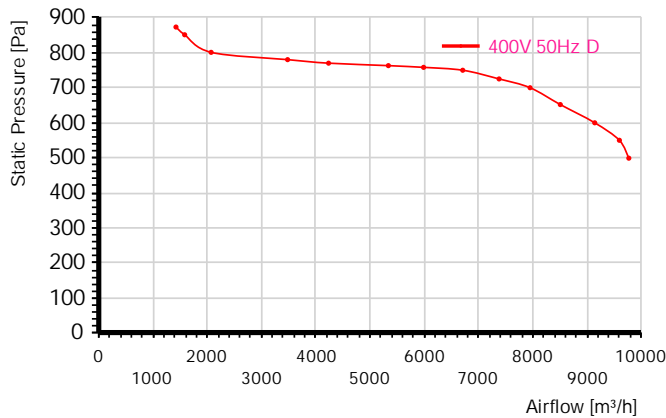
Model:YWF(K)6D500-GQ

Fan type:AC Forward curved centrifugal fan

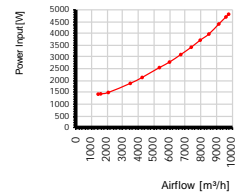
Rated voltage	400 VAC
Power input	4400 W
Rated current	7.5 A
Rated speed	900 r/min
Max airflow	9150 m³/h (Static pressure=600Pa)
Acoustic	84 dB(A) measured at 1.0m from inlet side

Performance curve

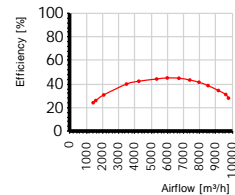
Airflow curve



Power input curve



Efficiency on total pressure



Performance test with reference to GB/T 1236-2017, equivalent to ISO 5801

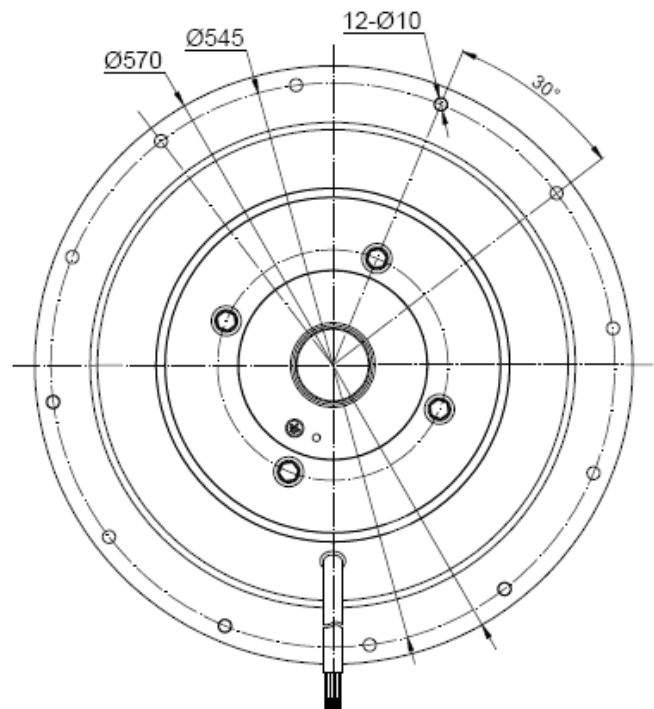
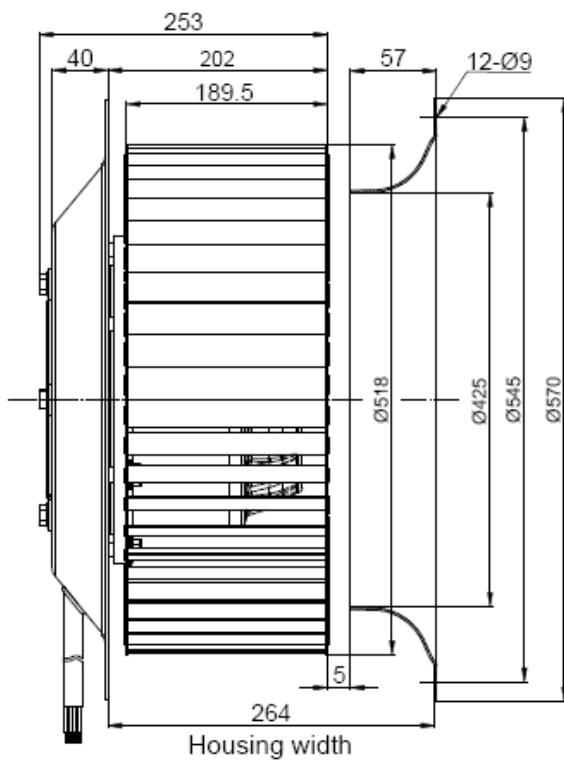
TestID			2017091901			Connection			D	
Test environment										
Outlet size		Outlet area		Temperature		Humidity		Baropressure		Density
423mm		0.1405㎡		28℃		61%		100.8kPa		1.2kg/m³
Test data										
Voltage	Frequency	Speed	Power input	Current	Airflow	Static pressure	Dynamic pressure	Total pressure	Pressure Difference	Nozzle Size
V	Hz	r/min	W	A	m³/h	Pa	Pa	Pa	Pa	mm
400.6	50	977	1424	4.56	1423	873	5	877	300	150+189*0
400.3	50	977	1437	4.56	1583	851	6	857	371	150+189*0
399.2	50	976	1495	4.59	2071	801	10	810	252	+189*1
400.7	50	968	1882	4.93	3481	780	27	808	268	150+189*1
400.7	50	963	2134	5.17	4236	770	40	810	396	150+189*1
399.8	50	954	2552	5.62	5339	763	64	828	242	150+189*2

Model:YWF(K)6D500-GQ

Fan type:AC Forward curved centrifugal fan

401.5	50	950	2785	5.87	5989	758	81	839	304	150+189*2
400.5	50	943	3105	6.28	6710	750	102	852	201	150+189*3
399.2	50	937	3417	6.68	7380	725	123	848	243	150+189*3
402.3	50	932	3715	7.11	7951	700	143	843	282	150+189*3
401.2	50	926	3974	7.47	8508	652	163	815	322	150+189*3
400.5	50	915	4403	8.07	9143	600	189	789	372	150+189*3
398	50	909	4699	8.51	9597	550	208	758	409	150+189*3
401.1	50	906	4816	8.57	9771	499	215	714	424	150+189*3

Dimensions(in mm)

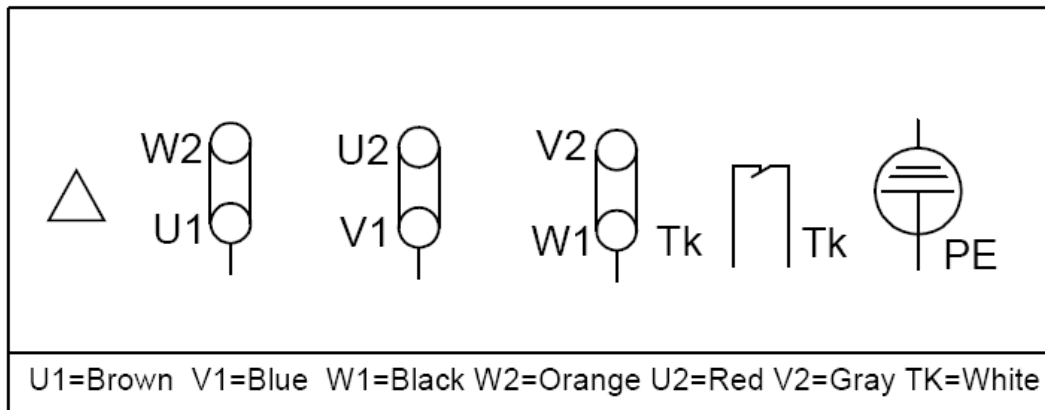


Model:YWF(K)6D500-GQ

Fan type:AC Forward curved centrifugal fan

Wiring diagram

WIRING DIAGRAM



Attentions

- ▣ Please check the appearance and the accessories if there is no damage before use, check the model is consistent with requirements;
- ▣ Keep reliable grounding according to the wiring diagram. to avoid motor burning and personal accident, please check wiring is loose or fall off;
- ▣ For AC fans powered by three-phase supply, please confirm the power connection phase sequence before use to ensure that the motor rotation direction is consistent with the marked rotation direction (the motor rotation direction can be changed by reversing any two-phase phase sequence of the power supply);
- ▣ Before connect the power supply, check whether the motor is reliable, otherwise it will cause motor damage and personal injury;
- ▣ It is forbidden to pull the power cable, if the power cable is damaged, to be repaired before use, to avoid the accident of electric shock;
- ▣ Drop or impact motor is forbidden;
- ▣ Washing motor with water is prohibited, it will reduce the motor insulation level, even lead to electric leakage even endanger personal safety;
- ▣ Special customized product is designed for specified requirements, please consult with our engineers before change useage;

Model:YWF(K)6D500-GQ

Fan type:AC Forward curved centrifugal fan

- ▣The temperature of the motor shell may be higher in a short time after the fan stopped, Please avoid direct contact with the motor surface. If necessary, please take protective measures to prevent scald;
- ▣Do not contact the impeller when the fan running, you need to wait for all the parts stopped before operate it;
- ▣When the fan is installed, check and ensure thers is no debris in the shell and other shell body, keep the fan clean;
- ▣After the fan installation complete, before connected to supply, please confirm that there is no collision or interference or stuck.

Service life, maintenance, warranty and Disclaimer

- The design life of this product is 40,000 hours. This data is derived from the expected life of L10 for general ball bearings at 40℃ is 40,000 hours. The actual service life of the product is affected by the use environment (temperature, humidity, installation, bearing load, etc.).
- According to the use of the environment, please make a clean maintenance every 3~6 months.
- From the date of purchase (order delivery date), The warranty period is one year. During this period, for failure due to the quality of the product itself, we provide free replacement or repairing. If the damage caused by improper disassembly, transportation, artificial damage or natural disasters, etc., is not in the scope of this warranty;
- All AC fans should be used according to the specified voltage range and power frequency. It is not recommended to use frequency converters and voltage regulators as speed control devices. If necessary, you need to make technical confirmation with our sales before placing an order. The use of unconfirmed speed control devices leads to the reduction of product life, abnormal noise, operating failures, etc., which are not covered by this warranty;