

# P6171

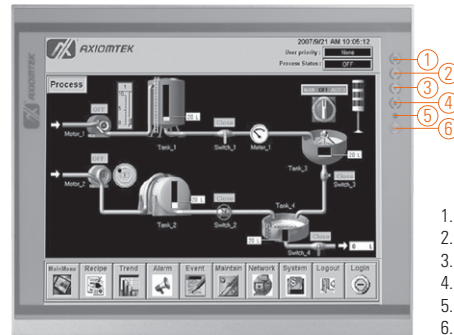
17" SXGA TFT Industrial LCD Monitor

## Features

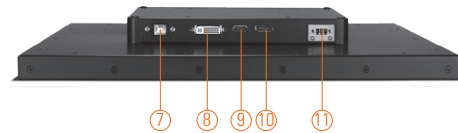
- 17" SXGA TFT LED backlight LCD
- NEMA 4/12 (IP65)- compliant flat panel monitor
- Supports panel mount, wall mount, rack mount and VESA arm
- Resistive touchscreen
- Full range screw-type (locked) AC-in or 12V/24V DC-in (option)
- DVI-D, DisplayPort and HDMI with multi-signal inputs



▲ Ultra-slim mechanism design



1. Menu
2. SEL+
3. SEL-
4. Exit
5. Power LED
6. Power switch



7. RS-232 or USB for Touch
8. DVI-D
9. HDMI
10. DisplayPort
11. Screw type or Phoenix type power input

## Introduction

The P6171 is an ultra slim industrial LCD monitor, which adopts 17-inch 350 nits SXGA LED backlight LCD display and supports multi-signal interfaces including DVI, DisplayPort and HDMI. Featuring NEMA 4/12 & IP65 compliant front bezel, screw-type adaptor plug design, and 12/24V DC-In means it is fit for all kinds of industrial environments. Moreover, the P6171 supports panel mount, wall mount, rack mount or VESA FPMPI (Video Electronics Standards Association Flat Panel Monitor Physical Mounting Interface) mounting. With the compact mechanism design, users can enjoy free from space constraint. It is especially suitable for POI/POS, excellent HMI and all kinds of heavy-duty industrial fields.

## Specifications

|                 |   |                  |
|-----------------|---|------------------|
| Front Bezel     | NEMA 4/12 (IP65)-compliant, metal front bezel   |                  |
| Mounting        | Panel mount, wall mount, rack mount or VESA arm FPMPI mounting (video electronics standards association Flat Panel monitor physical mounting interface)         |                  |
| LCD Panel       | Display   | 17" SXGA TFT LCD |
|                 | Max. Resolution   | 1280 x 1024      |
|                 | Max. Colors   | 16.7M            |
|                 | Active Area (mm)  | 337.92 x 270.33  |
|                 | Pixel Pitch (mm)  | 0.264 x 0.264    |
|                 | Response Time   | 5ms              |
|                 | Backlight   | LED backlight    |
|                 | Backlight MTBF  | 30,000 hrs       |
|                 | Viewing Angle (H/V)   | 170°/160°        |
| Display Control | Contrast Ratio  | 1000 (TYP.)      |
|                 | Brightness (cd/m <sup>2</sup> )   | 350 nits         |
| Display Control | OSD (on screen display)   |                  |
| Display Mode    | VGA 640 x 350 (70Hz), VGA 640 x 480 (60/72/75Hz), VGA 720 x 400 (70Hz), SVGA 800 x 600 (60/72/75Hz), XGA 1024 x 768 (60/72/75Hz), SXGA 1280 x 1024 (60/72/75Hz) |                  |

\* All specifications and photos are subject to change without notice.

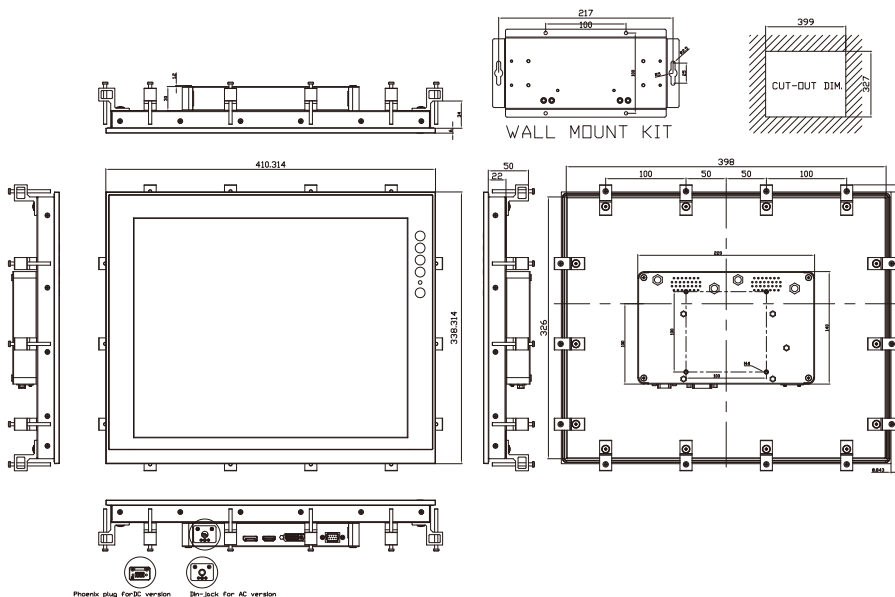
## Specifications

|                    |  |   |
|--------------------|--|---|
| Input Signal       | DVI-D<br>DisplayPort<br>HDMI<br>Touchscreen: Serial RS-232 or USB interface  |   |
| I/O Connectors     | 1 x RS-232 or USB for touchscreen version<br>1 x DVI-D<br>1 x DisplayPort<br>1 x HDMI<br>1 x Screw-type DC power input |   |
| Power Adapter      | Screw-type external AC / DC power adapter  |   |
| Power Consumption  | 24 W   |   |
| Touchscreen        | Thickness  | Resistive: 3.2 mm   |
|                    | Light Transmission   | Resistive: 80%  |
|                    | Power Consumption  | Resistive: +5V @ 100mA  |
|                    | Touch Life   | Resistive: 35million touches<br>Controller interface: RS-232 D-type<br>9pin male connector or USB |
| Dimensions         | 410.31 mm (16.15") (L) x 28 mm (1.10") (H)<br>x 38.31 mm (1.32") (W)   |   |
| Packing Dimensions | 510 mm (20.08") (L) x 532 mm (20.94") (H)<br>x 186 mm (7.32") (W)  |   |
| Weight (net/gross) | 3.8 kg (8.38 lb)/ 6.56 kg (14.46 lb)   |   |
| Environment        | Operating temperature: -20°C ~ +50°C (-4°F ~ +122°F)<br>Relative humidity: 20%~90% @ 40°C, non-condensing              |   |
| Certificate        | CE   |   |

## Ordering Information

|                 |                    |                      |
|-----------------|--------------------|----------------------|
| AC Power        | Resistive (RS-232) | P6171DPR-AC-RS-US-EU |
|                 | Resistive (USB)    | P6171DPR-AC-U-US-EU  |
|                 | Glass              | P6171DPG-AC-US-EU    |
| 12V/24VDC Power | Resistive (RS-232) | P6171DPR-DC-RS       |
|                 | Resistive (USB)    | P6171DPR-DC-U        |
|                 | Glass              | P6171DPG-DC          |

## Dimensions



\* All specifications and photos are subject to change without notice.

axiomtek.com



© 2017 Axiomtek Co., Ltd. All rights reserved.