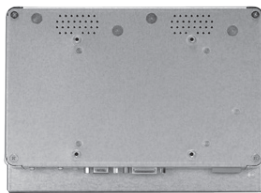
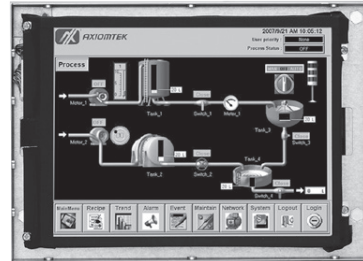


# P6841O NEW

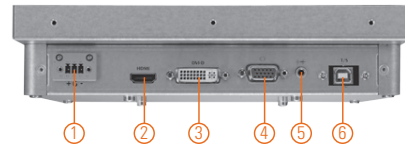
8.4" SVGA TFT Industrial Open Frame Monitor

## Features

- 8.4" SVGA TFT LED backlight LCD
- Supports open frame mount, wall mount and VESA arm
- Resistive touchscreen
- Full range screw-type (locked) AC-in or 12V/24V DC-in (option)
- DVI-D, VGA and HDMI with multi-signal inputs
- Wide operating temperature supported



- |         |                 |
|---------|-----------------|
| 1. Exit | 4. SEL+         |
| 2. Menu | 5. Power LED    |
| 3. SEL- | 6. Power switch |



- |          |             |
|----------|-------------|
| 1. Power | 4. VGA      |
| 2. HDMI  | 5. Line-in  |
| 3. DVI-D | 6. T/S port |

## Introduction

The P6841O is an ultra slim industrial open frame monitor, which adopts 8.4-inch 450 nits SVGA LED backlight LCD display and supports multi-signal interfaces including DVI, VGA and HDMI. 12/24V DC-In means it is fit for all kinds of industrial environments. Moreover, the P6841O supports open frame mount, wall mount or VESA FPM/PMI mounting. With the compact mechanism design, users can enjoy free from space constraint. It is especially suitable for POI/POS, excellent HMI and all kinds of heavy-duty industrial fields.

## Specifications

Front Bezel	Open frame monitor	
Mounting	Open frame mount, wall mount and VESA arm	
LCD Panel	Display	8.4" SVGA TFT LCD
	Max. Resolution	800 x 600
	Max. Colors	16.2M
	Active Area (mm)	170.4 x 127.8
	Pixel Pitch (mm)	0.213 x 0.213
	Response Time	30ms
	Backlight	LED backlight
	Backlight MTBF	50,000 hrs
	Viewing Angle (H/V)	160°/140°
	Contrast Ratio	600 (TYP)
Brightness (cd/m <sup>2</sup> )	450 nits	
Display Control	OSD (on screen display)	
Display Mode	VGA 640 x 350 (70Hz), VGA 640 x 480 (60/72/75Hz), VGA 720 x 400 (70Hz), SVGA 800 x 600 (60/72/75Hz)	
Input Signal	DVI-D	
	VGA	
	HDMI	
	Touchscreen: Serial RS-232 or USB interface	

## Specifications

I/O Connectors	1 x RS-232 or USB for touchscreen version 1 x DVI-D 1 x VGA 1 x HDMI 1 x Screw-type DC power input	
Power Adapter	Screw-type external AC/DC power adapter	
Power Consumption	9.8 W	
Touchscreen	Thickness	Resistive: 3.2 mm
	Light Transmission	Resistive: 80%
	Power Consumption	Resistive: +5V @ 100mA
	Touch Life	Resistive: 35 million touches Controller interface: RS-232 D-type 9-pin male connector or USB
Dimensions	227 mm (8.94") x 53 mm (2.09") x 162 mm (6.78")	
Packing Dimensions	362 mm (14.25") x 165 mm (6.5") x 397 mm (15.63")	
Weight (net/gross)	1.42 kg (3.11 lb)/2.3 kg (5.07 lb)	
Environment	Operating temperature: -20°C ~ +55°C (-4°F ~ +131°F) Relative humidity: 20% ~ 90% @ 40°C, non-condensing	
Packing List	1 x VGA cable 1 x RS-232 or USB cable for touchscreen (for touch version) 1 x Audio cable 1 x EU/US power cord (for AC version)	
Certificate	CE	

## Ordering Information

12V/24VDC Power	Resistive (USB)	P68410R-DC-UPR-DC-U
-----------------	-----------------	---------------------

## Optional Accessories

5946L203800E	HDMI cable
59461713400E	DVI cable
82231770050E	Wall mount kit
E226171106	Desktop stand

0  
1  
2  
3  
4  
5  
6  
7  
8  
9

Industrial  
Touch  
Monitors

6

## Dimensions

