



Industrial 2G/3G module

I-8212W/I-8213W

I-8212W-3GWA/I-8213W-3GWA

Quick Start

Package Checklist

The package includes the following items:

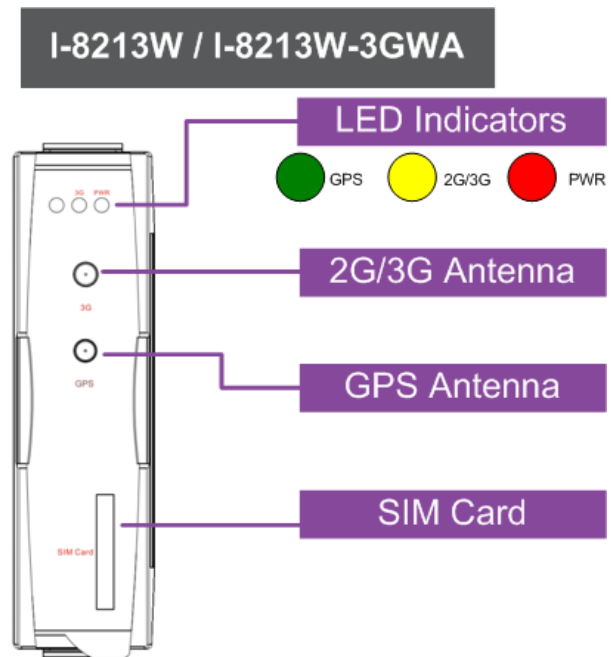
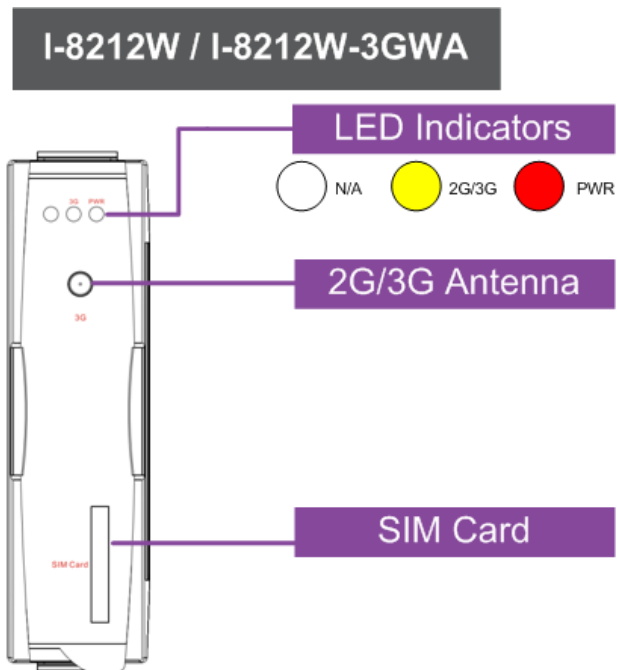
- One 2G or 3G hardware module
- One Quick Start
- One companion CD
- One 2G/3G antenna

Related Documents and Software Utilities

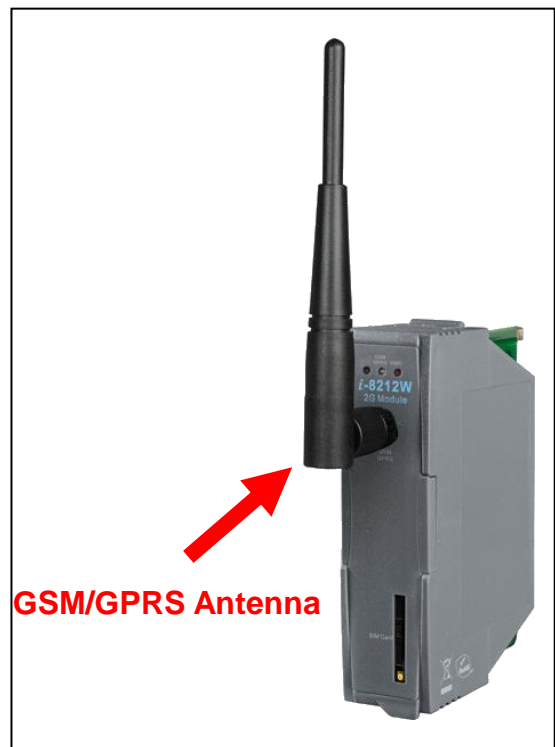
Documents

- User manual: I-8212_13(3GWA)_user_manual
- CD: \napdos\GPRS_GSM_Modem\I-8212W_I-8213W\Manual
- http://ftp.icpdas.com/pub/cd/usbcd/napdos/gprs_gsm_modem/i-8212w_i-8213w/manual/

➤ Pin Assignments

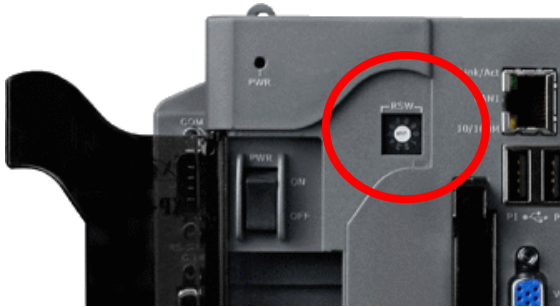


➤ SIM card and Antenna Installation

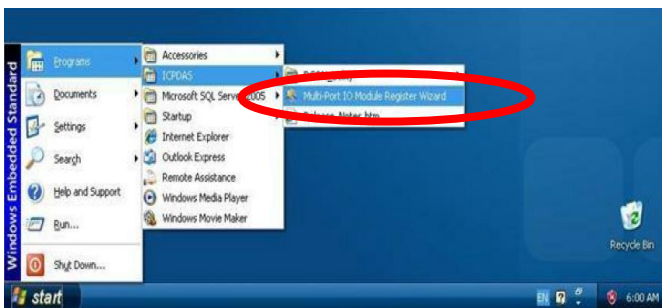


➤ **Install module on XP-8000**

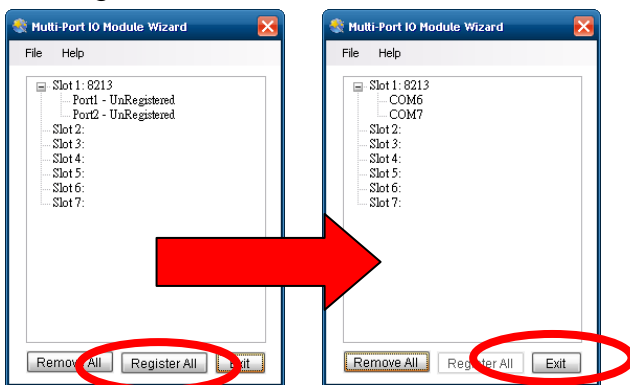
1. Install the module hardware on the XP-8000.
2. Rotate the Rotary Switch as “2”. To disable EWF (ENHANCED WRITE FILTER).



3. Reboot your XP-8000
4. After reboot, execute the “Multi-Port IO module Register Wizard”.
 - 4.1 Open Multi-Port IO Module Register Wizard, Start => ICPDAS => Multi-Port IO Module Register Wizard



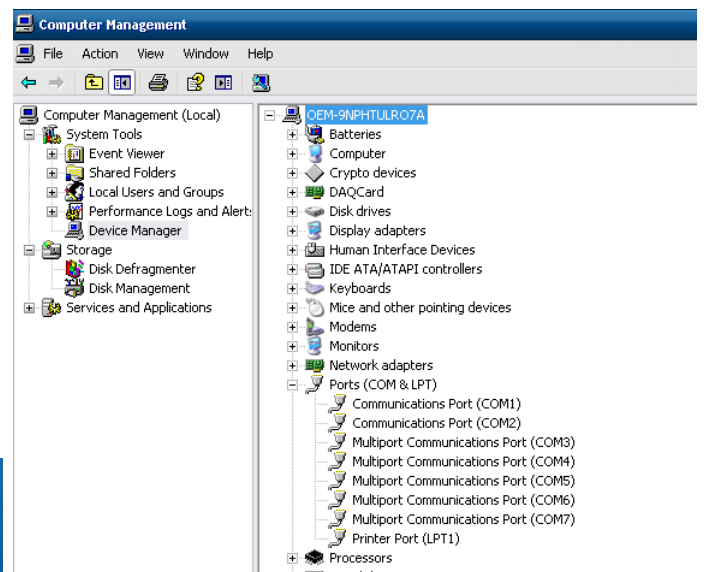
4.2 Register the module and select “Exit”



4.3 Select “OK” and reboot.



4.4 After reboot, XP-8000 will install ports of the module.

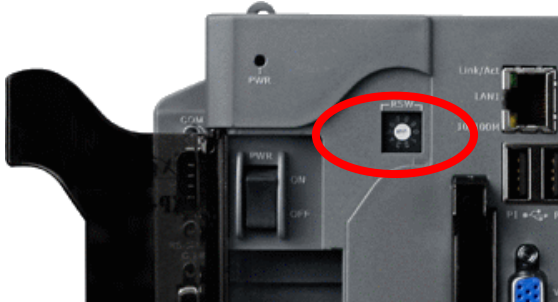


5 After finishing, rotate the Rotary Switch as “0”. To enable EWF.



➤ **Uninstall module on XP-8000**

1. Rotate the Rotary Switch as “2”. To disable EWF.

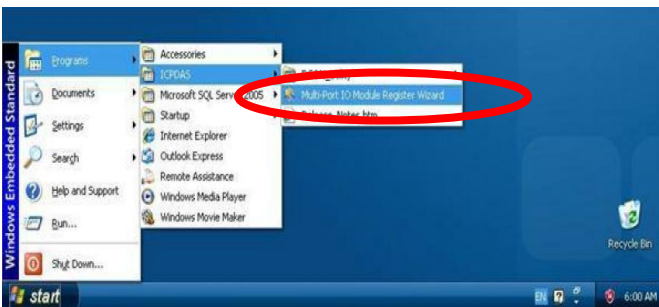


2. Reboot your XP-8000

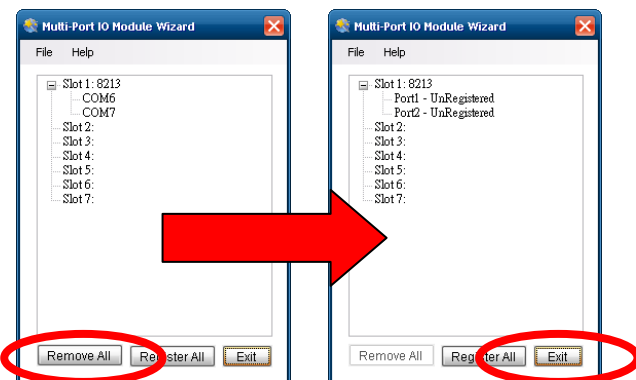
3. After reboot, ensure the module is installed on XP-8000 and execute the “Multi-Port IO module Register Wizard”.

3.1 Open Multi-Port IO Module Register Wizard,

Start => ICPDAS => Multi-Port IO Module Register Wizard



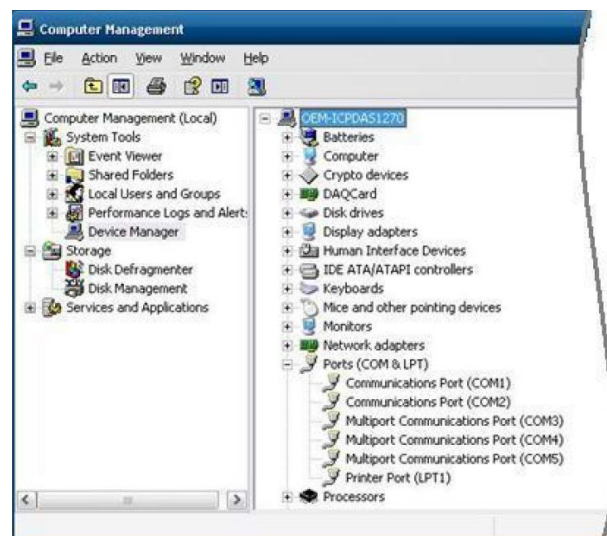
3.2 Remove the module and select “Exit”



3.3 Select “OK” and reboot.



3.4 After reboot, XP-8000 will install ports of the module.



4 After finishing, rotate the Rotary Switch as “0”. To enable EWF.



➤ **Quick Test (Hyper Terminal)**

Step1. Start → All Programs → Accessories → Communications → Hyper Terminal → Input new connection name → Click “OK” → Select your PC serial port → Click “OK”



Step2. Please refer to the following settings

Bits per second	115200
Data bits	8
Parity	None
Stop bits	1
Flow control	None

Step3. File → Properties → Settings → Click “ASCII Setup...” → Select “Echo typed character locally” → OK

Step4. Input “AT” and press “Enter”, then you will receive “AT OK”

➤ **Create a new modem connection on PC**

Step1. Control Panel → Double-click “Phone and Modem Options” → Modem → Click “Add”

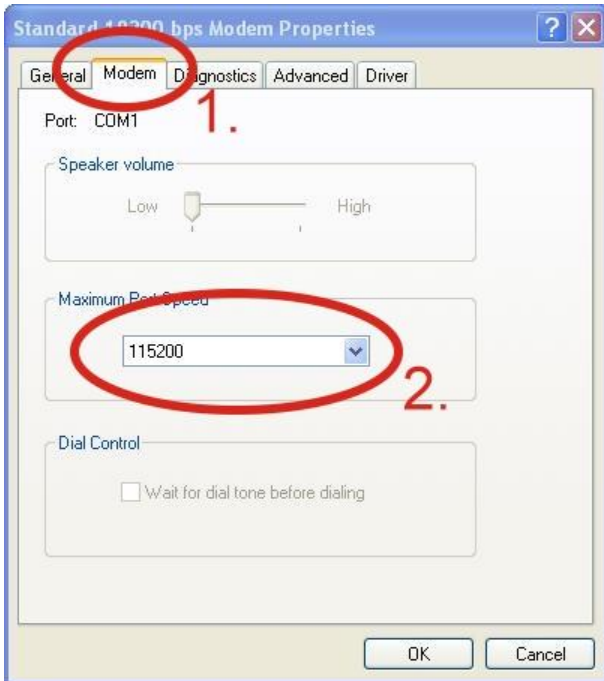
Step2. Select “Standard Modem Types” → Select “Standard 19200 bps Modem” → Click “Next”

Step3. Select your COM Port to connect the modem → Click “Next” → Click “Finish”



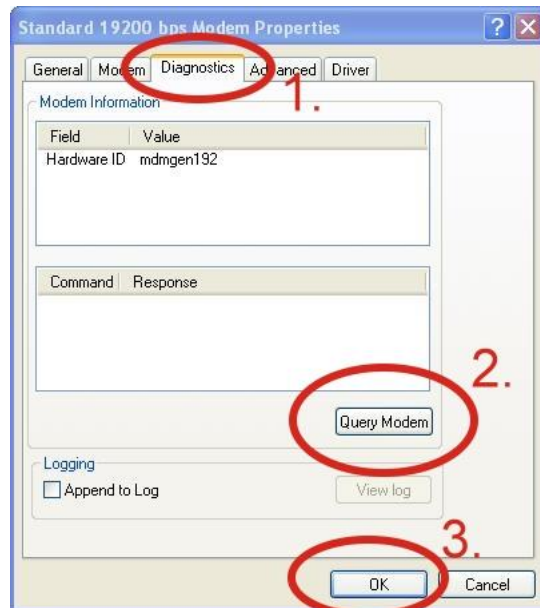
Step4. Control Panel → Double-click “Phone and Modem Options” → Modem → Select “Standard 19200 bps Modem” → Click “Properties”

Step5. Control Panel → Double-click “Phone and Modem Options” → Modem → Select “Standard 19200 bps Modem” → Click “Properties” → Modem → Maximum Port Speed → 115200



Step7. Diagnostics → Query Modem → Click “OK”

Note: If user queries modem that gets an Error, please try again.



Step6. Advanced → Extra initialization commands:

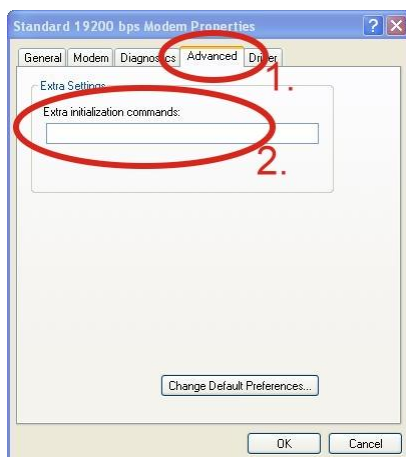
Note: GPRS's APN must be provided from your Telecom. CO., LTD.

For example in Taiwan:

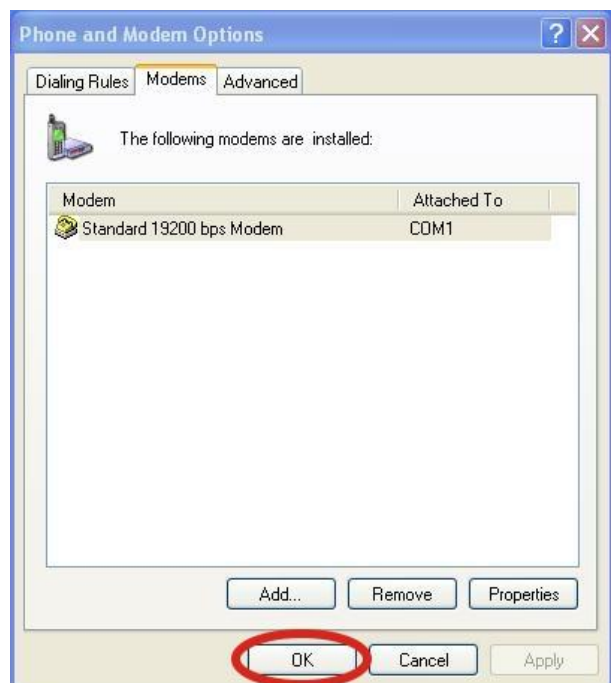
AT+CGDCONT=1,"IP","INTERNET"

For example in China:

AT+CGDCONT=1,"IP","CMNET"

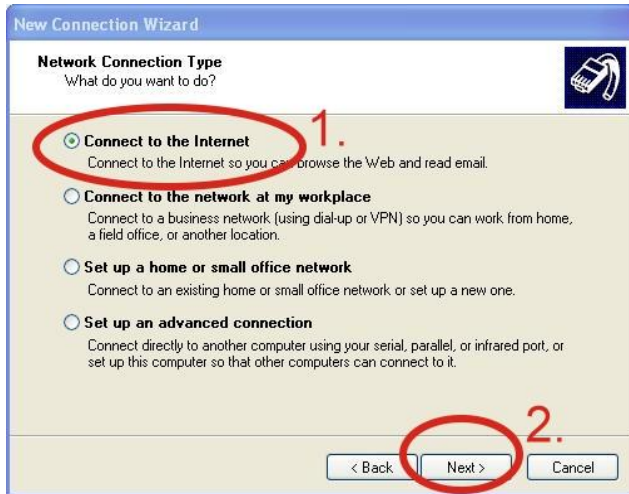


Step8. Click “OK”



➤ **Create a new dial-up on a PC**

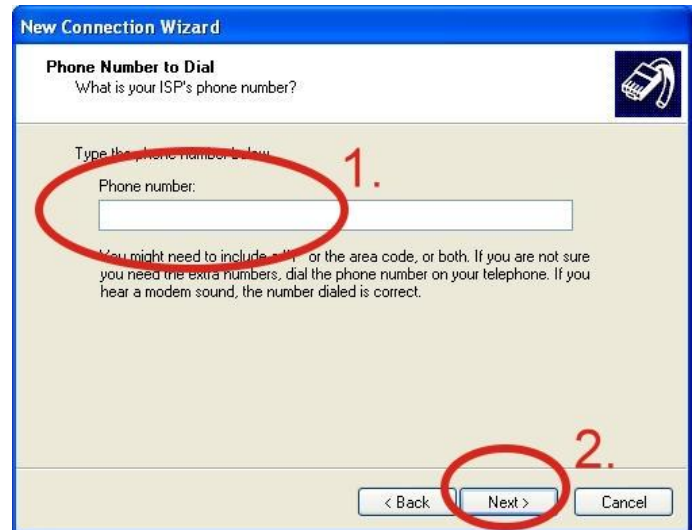
Step1. Control Panel → Network Connections → Click “Create a new connection” → Click “Next” → Select “Connect to the Internet” → Click “Next”



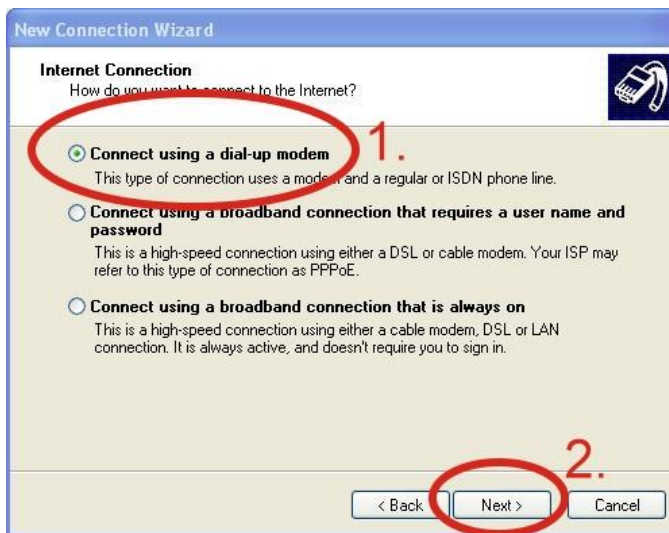
Step3. Your GPRS's name → Click “Next” → Phone Number: → Click “Next”

Note: Phone Number must be provided from your Telecom. CO., LTD.

For example in Taiwan: *99*1#**



Step2. Select “Connect using a dial-up modem” → Click “Next”



Step4. GPRS's **User name** and GPRS's **Password** → Click “Next” → Click “Finish”

Note: GPRS's User name and GPRS's **Password** must be provided from your Telecom. CO., LTD.

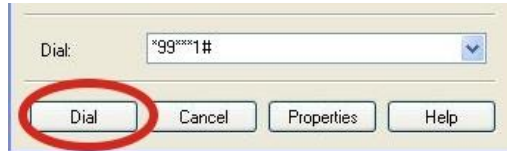


Step5. Control Panel →
 Network Connections →
 Click "Your GPRS's name" → File
 → Properties → General →
 Select "Standard 19200 bps Modem"
 → Click "Configure"



Step6. Maximum speed(bps) →
 Select "115200" → Don't select
 "Enable hardware flow control"
 → Click "OK"

Step7. Control Panel → Network
 Connections → Double-Click "Your
 GPRS's name" → Click "Dial"



Step8. If you connect to internet
 successfully, your toolbar have
 new logo



➤ Technical Support

1. ICP DAS Service : service@icpdas.com

2. I-8212W / I-8213W Website:
<http://m2m.icpdas.com/i-8212w.html>

3. I-8212W-3GWA / I-8213W-3GWA Website:
<http://m2m.icpdas.com/i-8212w-3GWA.html>