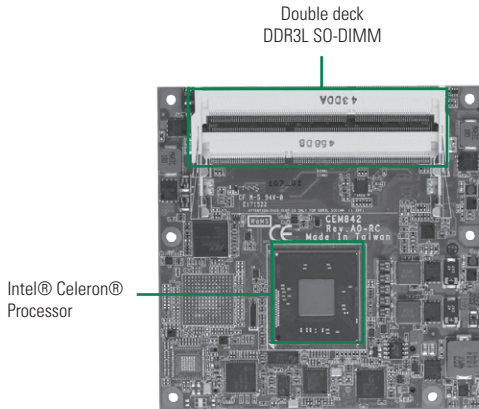


# CEM842

Intel® Celeron® Processor J1900/N2807  
COM Express Type 6 Compact Module



## System

CPU	Intel® Celeron® processor J1900 2 GHz or Celeron® N2807 1.58 GHz onboard
System Memory	2 x 204-pin SO-DIMM support DDR3L-1066/1333 up to 8 GB
Chipset	SoC integrated
BIOS	AMI uEFI
SSD	N/A
Watchdog Timer	255 levels, 1~255 sec. or min.
Expansion Interface	Max. up to 6 lanes of PCIe
Battery Lithium	N/A
Power Input	ATX 12V/5VSB or AT 12V
Size	95 x 95 mm
Board Thickness	2.0 mm
Temperature	0° ~ +60°C (32°F ~ 140°F), operation
Operation Humidity	10% ~ 95% relative humidity, non-condensing

## I/O

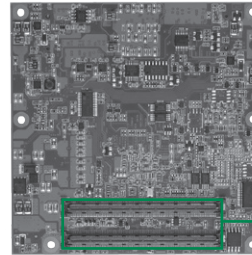
MIO	1 x LPC interface 1 x SPI interface
SATA	2 x SATA-300
Hardware Monitoring	Yes
Ethernet	1 port as 10/100/1000Mbps supports Wake-on-LAN, PXE Boot ROM with Intel® i210AT
Audio	HD link interface to baseboard for Codec
USB	8 x USB 2.0 and 1 x USB 3.0
TPM	ST33TPM12
SMBus	Yes
Digital I/O	4 channels IN & 4 channels OUT

## Display

Chipset	Intel® HD graphics (Gen 7 Gfx) display engine Gfx APIs – DX11, OCL 1.2, OGL 3.0 2 independent displays
Display Interface	1 x VGA 1 x LVDS; 18/24-bit single/dual channel 1 x DDI (DP, HDMI, DVI)

## Features

- Intel® Quad/ Dual Core Celeron® processor (Bay Trail)
- 2 DDR3L-1066/1333 SO-DIMMs max. up to 8 GB
- Max. up to 6 lanes of PCIe
- 2 SATA-300 interfaces
- 8 USB 2.0 and 1 USB 3.0 ports



▲ Rear view

## Packing List

Quick installation guide, user's manual/utility CD

## Ordering Information

### Standard

CEM842PVG-N2807	COM Express type 6 with Intel® Celeron® N2807, DDI/VGA/LVDS, 10/100/1000Mbps Ethernet, USB 3.0 and TPM
CEM842PVG-J1900	COM Express type 6 with Intel® Celeron® J1900, DDI/VGA/LVDS, 10/100/1000Mbps Ethernet, USB 3.0 and TPM

### Optional Accessories

CEB94006	ATX form factor type 6 evaluation board
(P/N: E394006100)	
5078D841100E	CEM841/2/3 Heatspreader
5078D842200E	CEM841/2/3 Heatsink without fan