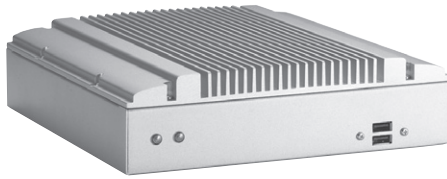


eBOX746A-FL

Fanless Embedded System with VIA Processor up to 1.5 GHz



▲ Front view



Specifications

Standard Color	Silver
Construction	Aluminum extrusion and heavy-duty cold-rolled steel, IP40
CPU	VIA Eden 1 GHz/ VIA C7 1.5 GHz
System Memory	1 x 200-pin DDR2 SO-DIMM max. up to 1 GB
Chipset	VIA CX700M
BIOS	Phoenix-Award 4 Mbit with RPL/PXE LAN Boot ROM, SmartView and Customer CMOS backup
System I/O Outlet	3 x RS-232 (COM 2/3/4) 1 x RS-232/422/485 (COM 1) 1 x VGA 1 x LPT 1 x PS/2 keyboard/mouse 1 x 10/100Mbps Ethernet (Realtek RTL8139DL) 3 x USB 2.0 1 x VDC power input terminal block (DC version) 1 x VAC power input connector (AC version)
Watchdog Timer	255 levels, 1 ~ 255 sec.
Storage	1 x 2.5" IDE HDD drive bay 1 x CompactFlash™ slot
Expansion Interface	N/A
System Indicator	1 x green LED for system power-on 1 x orange LED for HDD active
Power Supply	* AC AT 72W Input: 85 ~ 270VAC Output: +5V @ 10A, +12V @ 1.5A, -12V @ 0.3A * DC AT 72W Input: 18 ~ 36VDC Output: +5V @ 10A, +12V @ 1.5A, -12V @ 0.3A * DC AT 72W Input: 36 ~ 72VDC Output: +5V @ 10A, +12V @ 1.5A, -12V @ 0.3A
Operating Temperature	-10°C ~ +55°C (23°F ~ 131°F) (with W.T. CF, Eden 1 GHz) -10°C ~ +50°C (23°F ~ 122°F) (with W.T. HDD, Eden 1 GHz)
Storage Temperature	-20°C ~ +80°C (-4°F ~ +176°F)
Humidity	10% ~ 90%, non-condensing
Vibration Endurance	2 Grms with CF (5 ~ 500 Hz, X, Y, Z directions) 0.5 Grms with HDD (5 ~ 500 Hz, X, Y, Z directions)
Dimensions	225 mm (8.86") (W) x 225 mm (8.86") (D) x 63 mm (2.48") (H)
Weight (net/gross)	2.65 kg (5.84 lb)/4.2 kg (9.26 lb)
Certification	CE
EOS Support	XPE, WinCE, Linux, WES

- * XPE: Windows® XP Embedded
- * WES: Windows® XP Embedded Standard
- * WES7: Windows® XP Embedded Standard 7
- * WES8: Windows® XP Embedded Standard 8

Packing List

- 1 x quick manual
- 1 x driver CD
- 1 x Y cable for PS/2 keyboard/mouse
- 1 x screw pack
- 4 x HDD anti-vibration damper
- 1 x wall mount kit

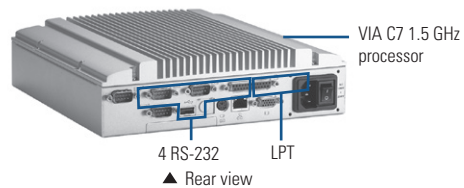
* All specifications and photos are subject to change without notice.
© 2014 Axiomtek Co., Ltd. All rights reserved.

www.ipc2u.ru

www.ipc2u.de

Features

- Fanless operation
- VIA Eden/ C7 processor up to 1.5 GHz onboard
- VIA CX700M chipset
- High performance with extremely low power
- Full feature I/O
- Supports CompactFlash™
- One 2.5" IDE HDD drive bay
- 70 watt AC-in or DC-in power supply



▲ Rear view

Power Protection

AC & DC Version

- OVP (over voltage protection)
- OLD (over load protection)
- SCP (short circuit protection)

Ordering Information

Standard

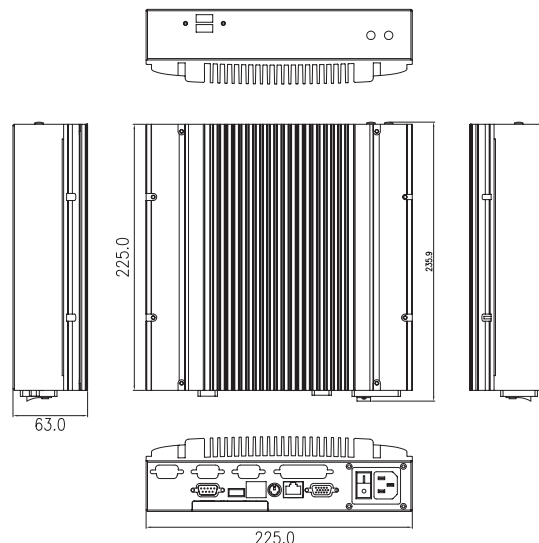
eBOX746A-FL1.0G	Fanless embedded system with VIA Eden 1.0 GHz processor, 512 MB DDR2 SO-DIMM, AC-in 70W P/S
eBOX746A-FL1.5G	Fanless embedded system with VIA C7 1.5 GHz processor, 512 MB DDR2 SO-DIMM, AC-in 70W P/S

Optional

2.5" IDE HDD	40 GB or above
DDR2 SODIMM	256 MB ~ 1 GB
Power supply	24VDC-in, 48VDC-in
CompactFlash	256 MB ~ 8 GB
Power cord	
DIN rail kit	

* Specifications and certifications are based on options and may vary.

Dimensions



axiomtek.com

www.sovio.com

Date:01.06.2016

Overview

Embedded Systems

Embedded Systems for Transportation

Embedded Field Controllers

Embedded MicroBoxes

Industrial Barebone Systems

Industrial Chassis

Backplanes

Power Supplies

Peripherals & Accessories