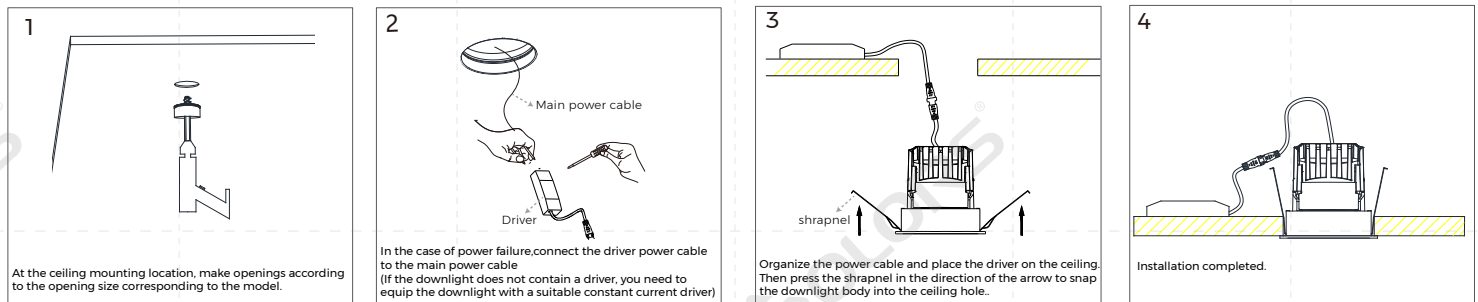


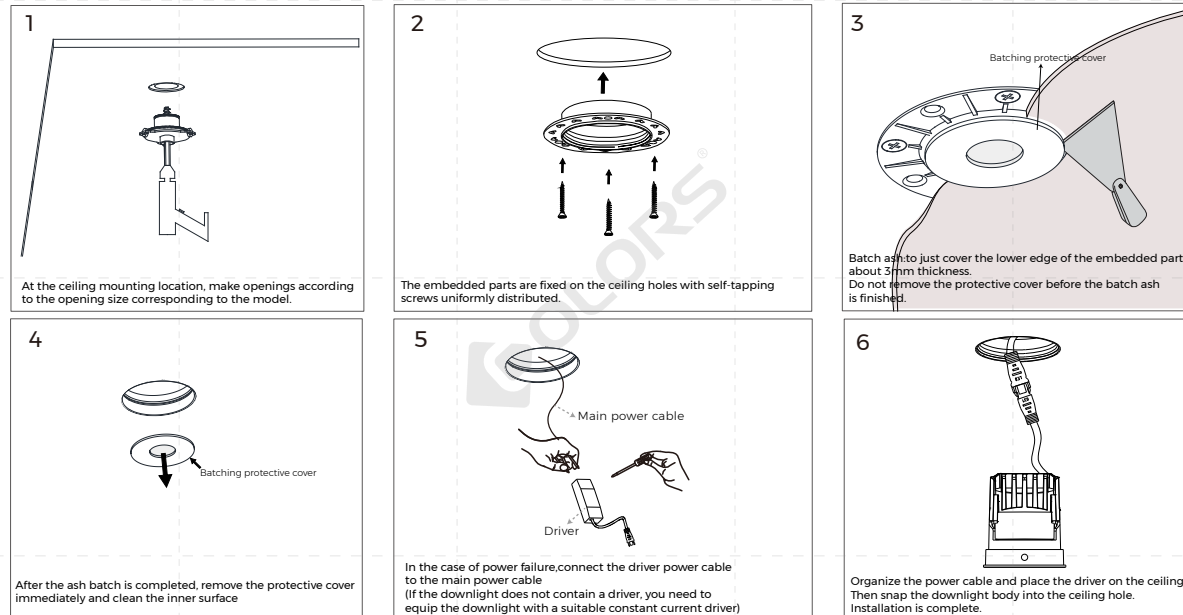
Product name	Model	Opening size
φ55 Recessed downlights	KE55L	φ55mm
φ75 Recessed downlights	KE75L	φ75mm
φ55 Trimless recessed downlights	KR55L	φ55mm
φ75 Trimless recessed downlights	KR75L	φ75mm

## 1. Recessed downlights-Installation instructions



Note: The above installation steps are only applicable to recessed downlights, the specific appearance is subject to the actual object!

## 2. Trimless Recessed downlights-Installation instructions



Note: The above installation steps are only applicable to trimless recessed downlights, the specific appearance is subject to the actual object!

### ◆Notice:

1. The LED lamp input voltage is AC220-240V 50/60Hz; Before installing and maintaining lamps, make sure that the power supply is cut off.
2. Please do not change the lamp spare parts at will before use, so as to avoid the adverse consequences of lamp fall, electric shock, fire and so on.
3. Please wear clean gloves when installing the lamp to avoid the surface of the lamp from sweat contamination and oxidation.
4. this lamp is only for indoor use, any dusty, humid, corrosive environment will affect the performance of the product.
5. Please ensure that there are at least 75mm vents around the product, the use of the lamp can not violate any fire regulations, lighting and surface must be at least 800mm away from the front of the lamp.
6. Please tighten the installation, and ensure that it is installed on the strong ceiling, the total weight of the lamp should be within the ceiling can withstand, and the installation of the lamp can not affect the structural safety of the house.
7. In any case, the lamp can not be covered by thermal insulation liner or similar materials, LED module is not replaceable.
8. The light source in this lamp should be replaced by the manufacturer or its service agent or a similarly qualified person.
9. Lamps occur abnormal phenomenon, please quickly cut off the power supply, and contact our service agents or by professional inspection and maintenance.
10. Y-type connection: the external cable or cord of this lamp should be replaced by the manufacturer or its service agent or a similarly qualified person.