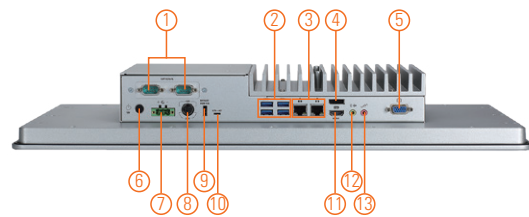
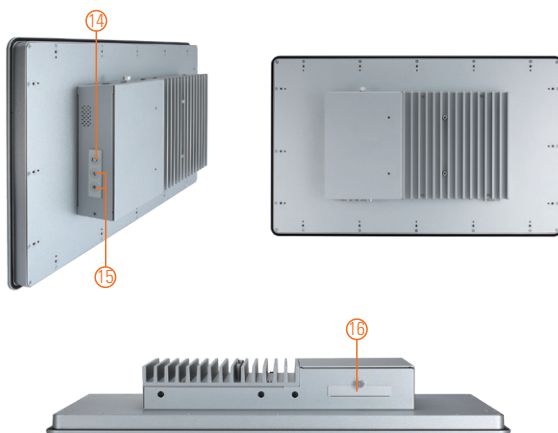
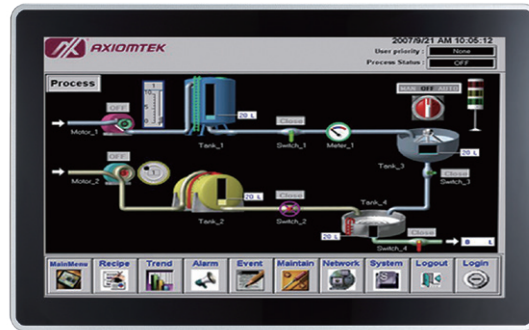


GOT321W-502-PCT NEW

21.5" FHD TFT Expandable Multi-touch Panel Computer with 7th/6th Gen Intel® Core™ i7/i5/i3 Processor

Features

- 21.5" FHD 10-point multi-touch projected capacitive wide screen
- LGA1151 socket 7th/6th gen Intel® Core™ i7/i5/i3, Celeron® & Pentium® processor
- Intel® H110 chipset
- 4 USB 3.0 and 2 COM
- 2.5" SATA HDD and mSATA
- WLAN module & antenna (optional)
- IP65 front bezel
- Supports panel mount and VESA mount (VESA arm/desktop stand/wall mount optional)
- Built-in speakers and removable hard drive design



- | | | |
|-------------------|--------------------------------------|---------------------------|
| 1. COM x2 (cable) | 6. Power button (ATX) | 11. HDMI |
| 2. USB 3.0 x 4 | 7. Terminal block for DC power input | 12. Audio (Line-out) |
| 3. Ethernet x 2 | 8. Power input for adapter | 13. Audio (Mic-in) |
| 4. DisplayPort | 9. Remote power switch | 14. Backlight switch |
| 5. VGA | 10. AT/ATX selectable switch | 15. Brightness adjust +/- |
| | | 16. Swappable HDD |



Introduction

The GOT321W-502-PCT is a 21.5" multi-touch panel PC for kiosk and automation applications. It has a fashionable mechanism design and industrial-grade IP61-rated front bezel which can avoid damage from chemical corrosion. To meet the demands of multimedia application, the GOT321W-502-PCT is powered by the high performance LGA1151 socket 7th/6th gen Intel® Core™ processor with the Intel® H110 chipset. It features two COM ports, two Gigabit Ethernet and up to 32GB memory of dual-channel DDR4-2400 that delivers high computing capability for high performance-demanding applications. The industrial touch panel PC is most suitable for kiosk and factory automation.

Removable Hard Drive Design

The GOT321W-502-PCT has designed with removable HDD. User can easily plug in standard 2.5" HDD based on any application needs.

Speaker and WLAN Module Supported

The GOT321W-502-PCT features built-in speakers for kiosk application to display multimedia content program. It also supports WLAN module and antennas (optional) for wireless network connectivity.

Specifications

Front Bezel	Aluminum w/ IP65/NEMA 4 rugged protection	
LCD Panel	Display Type	21.5" FHD TFT
	Brightness	250 nits
	Resolution	1920 x 1080 pixels
	Viewing Angle	178°/178°
Main System	CPU	LGA1151 socket 7/6th gen Intel® Core™ i7/i5/i3, Celeron® & Pentium® processor
	Chipset	Intel® H110
	System Memory	2 x 260-pin DDR4-2400 SO-DIMM, up to 32GB
	BIOS	AMI UEFI BIOS
	Storage	1 x 2.5" SATA HDD
	Drive	N/A
	Watchdog Timer	255 levels, 1 ~ 255 sec.

Specifications

IO Connector	2 x RS-232/422/485 1 x HDMI v1.4 1 x VGA (up to 1920 x 1200 60Hz) 1 x DisplayPort v1.2 (DP++) 4 x USB 3.0 2 x 10/100/1000 Mbps Ethernet (Intel® i219LM/i211AT) 1 x audio (Mic-in/Line-out)
Expansion Interface	1 x half-size PCI Express Mini Card slot (mPCIe 1) 1 x full-size PCI Express Mini Card slot (mSATA_mPCIe 2)
Touchscreen	10-point projected capacitive multi-touch
Power Supply	DC terminal block: +12V/+19V/+24V AC adapter: 19V, 6.32A
Power Consumption	105W
Dimensions	547.59 mm (21.56") (W) x 339.05 mm (13.49") x 75.6 mm (2.98")
Packing Dimension	720 mm (28.34") (W) x 210 mm (8.27") (D) x 550 mm (2.17") (H)
Weight (net/gross)	8.4 kg (18.5 lb)/11.3 kg (24.9 lb)
Environment	Operating temperature: 0°C ~ +40°C (+32°F ~ +104°F) Relative humidity: 10% ~ 90% @ +40°C, non-considering Operating vibration: 1.0G, 5 ~ 500Hz, random
Certificate	CE

Ordering Information

GOT321W-502-PTC	21.5" FHD TFT fanless multi-touch panel computer with LGA1151 socket 7th/6th gen Intel® Core™ Pentium®, Celeron® processor, 10-point projected capacitive multi-touch screen and 12/19/24 VDC terminal block connector
-----------------	--

* Specification and certifications are based on requirements and may vary.

Optional Accessories

82231770050E	GOT3177T-834 wall mount kit
--------------	-----------------------------

Optional OS Installation

Windows® 7 32/64-bit, Windows® 8.1 64-bit, Windows® 10 64-bit (Sky Lake)
Windows® 10 64-bit (Kaby Lake)

Dimensions

