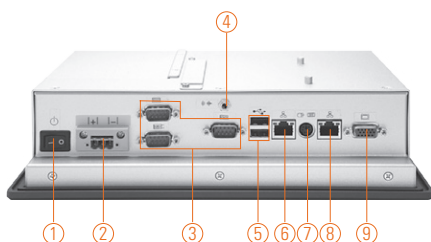


GOT-3840TL

8.4" SVGA TFT Cost-effective Fanless Touch Panel Computer



- | | |
|--|-----------------|
| 1. Power switch | 6. Ethernet |
| 2. DC inlet | 7. PS/2 K/B+M/S |
| 3. COM 1/2/3
(RS-232/422/485, RS-232) | 8. Ethernet |
| 4. Audio (Line-out) | 9. VGA |
| 5. USB 2.0 x 2 | |



Introduction

The GOT-3840TL is a 8.4" fanless touch panel computer. Integrated with 8.4" TFT LCD and AMD Geode LX800 500 MHz processor, the GOT-3840TL provides customers the most economical solution. With the compact design, the GOT-3840TL is ideal for space-limited environments, such as industrial machinery and transportations. In response to the growing demand for WLAN application, the GOT-3840TL also supports optional WLAN antenna for wireless network connection. The GOT-3840TL can be used extensively for various applications including industrial machinery, processing status monitoring, and more.

Cost-effective solution

Integrated with 250 nits LCD and onboard AMD Geode LX800 500 MHz processor, the GOT-3840TL provides an economical solution for customers in response to demands for cost-effective product.

WLAN antenna supported (optional) and Dual-LAN

The GOT-3840TL provides a MiniPCI slot and an optional fixed rotational WLAN antenna for wireless network connections. By simply plugging in the WLAN card, customer can operate the GOT-3840TL in a wireless environment. Besides, the GOT-3840TL also supports Dual-LAN function for the growing demands of LAN connection.

Compact design for space-limited application

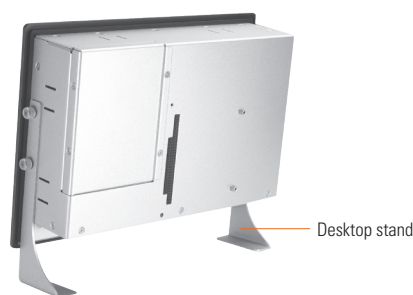
The GOT-3840TL is specially designed for space-limited applications including industrial machinery, transportation and home automation. This fanless touch computer is designed around the concept of small cut-out dimension. Moreover, the GOT-3840TL adopts sleek appearance and streamlined mechanical layout.

Anti-vibration up to 1.3G

With a special vibration-resistant design patent, the GOT-3840TL can work well under 1.3G (5-500Hz) in operation mode, and equipped with a 2.5 HDD.

Features

- 8.4" SVGA (800 x 600) color TFT LCD display
- Fanless cooling system with low power AMD Geode LX800 500 MHz processor
- Supports Dual LAN & WLAN antenna
- Compact design for space-limited application
- Supports anti-vibration up to 1.3 G (HDD, random)
- Supports panel mount, wall mount, VESA arm, desktop stand (optional)



▲ Rear view

Specifications

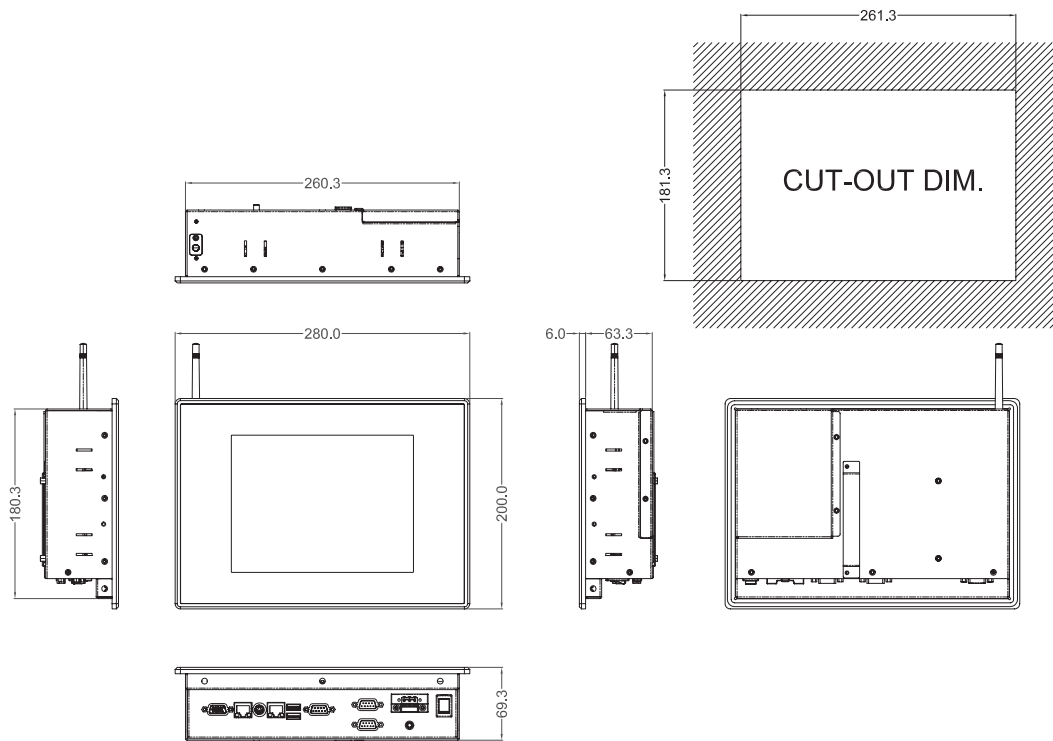
Front Bezel	IP65, NEMA 4 rugged protection, aluminum front bezel	
LCD Panel	Display Type	8.4" SVGA TFT LCD
	Brightness (cd/m ²)	250 nits
	Resolution	800 x 600
Main System	CPU	AMD Geode LX800 500 MHz
	Chipset	AMD LX + CS5536AD + ITE8888G
	System Memory	1 x 200-pin DDR SO-DIMM max. up to 1 GB
	BIOS	Award 4Mbit with RPL/PXE LAN boot ROM, Smartview and customer CMOS backup
	Storage	1 x 2.5" IDE HDD 1 x CompactFlash™
	Watchdog Timer	255 levels, 0-255 sec.
	Onboard Graphics	Integrated in AMD LX chipset



Specifications

I/O Connector	2 x RS-232 (COM 2/3) 1 x RS-232/422/485 (COM 1) 1 x VGA 1 x Audio (Line-out) 1 x PS/2 keyboard/mouse 2 x USB 2.0 2 x 10/100Mbps Ethernet
Expansion Interface	1 x MiniPCI slot 1 x PC/104 slot
Touchscreen	Resistive type
Power Supply	16~28VDC, 48W, w/ fuse power protection
Dimensions	280 mm (11.02") (W) x 69.3 mm (2.73") (D) x 200 mm (7.87") (H)
Packing Dimensions	380 mm (14.96") (W) x 190 mm (7.48") (D) x 440 mm (17.32") (H)
Weight (net/gross)	3.5 kg (7.7 lb)/4.2 kg (9.26 lb)
Environment	Operating temperature: 0° ~ +50°C (+32°F ~ +122°F) Storage Temperature: -20°C ~ +70°C (-4°F ~ +158°F) Relative humidity: 10% ~ 95% @ 40°C; non-condensing Operation vibration: 1.3G, 5 ~ 500Hz, random for 2.5"HDD 2G, 5 ~ 500Hz, random for CompactFlash™
Certificate	CE

Dimensions



Ordering Information

GOT-3840TL	8.4" SVGA TFT cost-effective fanless touch panel computer with AMD Geode LX800 500 MHz processor, resistive touch screen and 16~28VDC terminal block connector
------------	--

* Specification and certifications are based on options and may vary.

Optional Accessories

82238400800E	Wall/VESA kit for GOT-3840TL
82018400060E	Desktop stand kid for GOT-3840TL
50966A23040E	Power adapter, 70W, 110~230VAC to 24VDC
E201840102	Metal cover for 1 PC/104 slot
E201840101	Metal cover for 2 PC/104 slot
E392203100	802.11 b/g wireless LAN kit

* Specification and certifications are based on options and may vary.

Optional EOS Installation

Window® XP Embedded
Windows® CE.NET

Optional OS Installation

Windows® XP

Overview

Fanless Touch Panel Computers

2

Heavy-duty Fanless Touch Panel Computers

Industrial Touch Panel Computers

Industrial Touch panel Monitors

Infotainment Touch Panel Computers

Healthcare & Medical Solutions

Open Frame Panel Computers

Accessories

