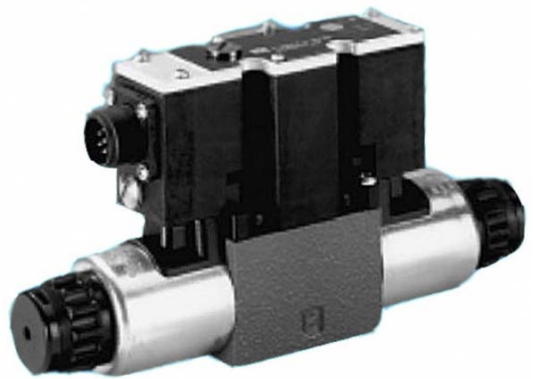


## Integrated Proportional Amplifier

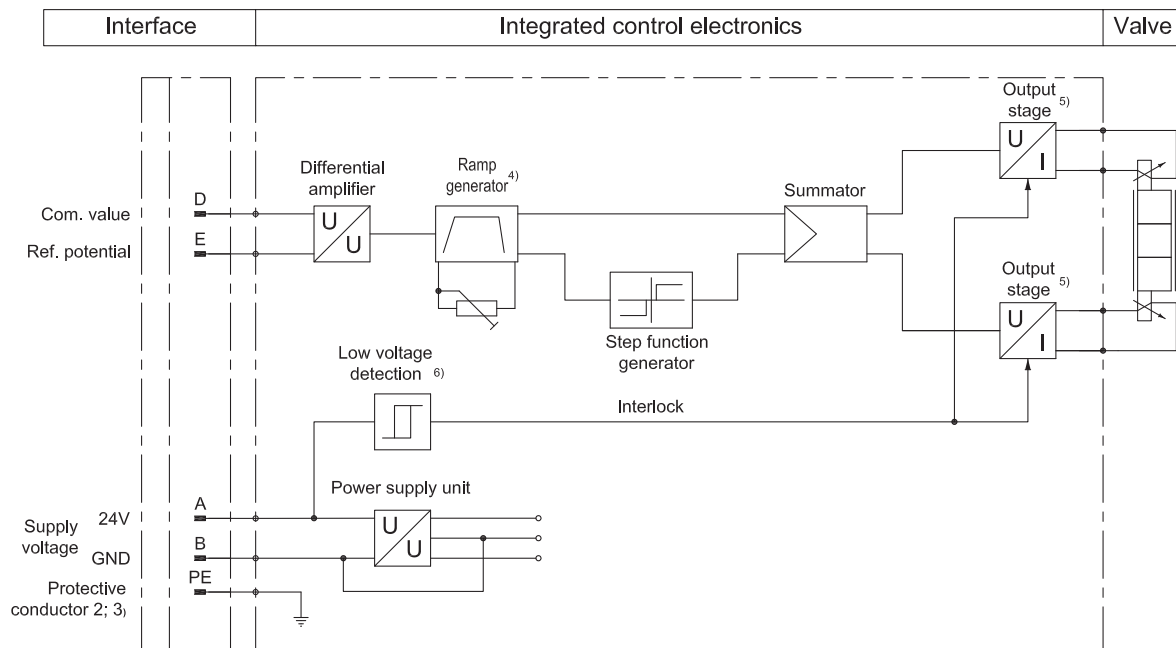
**RT-3DREPE6-2X**

**Series: 3X**

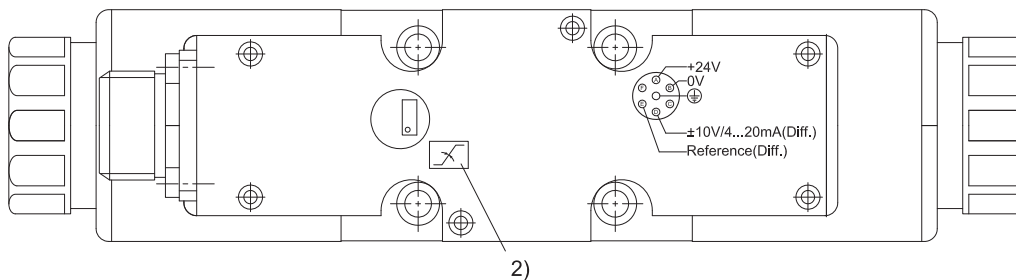
**for valves type 3DREPE6-2X**



### Block circuit diagram



- 1) PE is connected to the cooling body and the valve housing
- 2) Ramp can be externally adjusted from 0 to 5 s;



## Odering code

### ReboTech

for valves ( type 3DREPE6)

20 to 29: (unchanged installation  
and connection dimensions)

RT-3DREPE6 - 2X / - 30 - CN

= 2X

Further details in clear text

CN = Made in China

30 = Design number

A1 = command value input  $\pm 10$  V

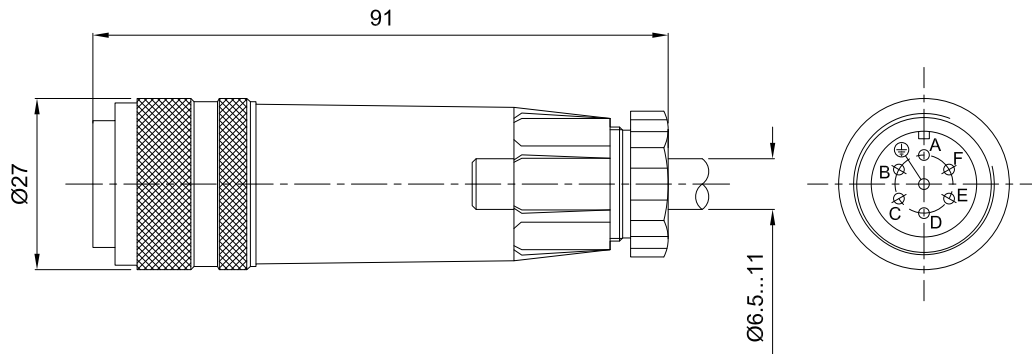
F1 = Command value input 4 to 20 mA

## Technical data (For applications beyond these parameters, please consult us!)

Operating voltage	$U_B$	24 VDC + 40 % - 20 %
— Upper limit value	$U_B(t)_{\max}$	35 V
— Lower limit value	$U_B(t)_{\min}$	19 V
Power consumption	$P_s$	<45 VA
Current consumption	$I$	< 2 A
Command value	A1 $U_e$	$\pm 10$ V, $R_e > 50k\Omega$
	F1 $I_e$	4 to 20mA, $R_e < 200\Omega$
Maximum output current	$I_{\max}$	2.5 A ; $R_{(20)} = 2 \Omega$
Ramp time	$t$	0 ~ 5s
Type of connection		Socket; DIN 43650-AM2 Plug; E DIN 43563-BF6-3/PG11(should be ordered separately)
Permissible operating temperature range		- 20 ~ 80 °C
Storage temperature range		- 25 ~ 85 °C
Protection class		IP65 ; DIN 40050
Weight	$m$	0.14 kg

## Plug wiring diagram

Plug-in connector to DIN EN 175 201-804(See below)。



## Plug wiring diagram

	Contact	Signal
Supply voltage	A	24 VDC (19 to 35VDC)
	B	GND
	C	Missed 3)
Differential amplifier input	D	com. value ( $\pm 10V / 4-20mA$ )
	E	Reference
	F	Missed 3)

3) Slots C and F must not be connected!。

**Command value:** A positive command value (or 12 to 20 mA) at D and the reference potential at E results in pressure in A.

A negative command value (or 12 to 4 mA) at D and the reference potential at E results in pressure in B.

For a valve with one solenoid on side B (version A), a positive command value at D (4 to 20 mA) and the reference potential at E, results pressure in A and for a valve with one solenoid on side A(version B), a positive command value at D (4 to 20 mA) and the reference potential at E, results in pressure in B.

**Connection cable:** Recommended: – up to 25 m cable length type LiYCY 5 x 0.75 mm<sup>2</sup>

– up to 50 m cable length type LiYCY 5 x 1.0 mm<sup>2</sup>

Outside diameter 6.5 to 11 mm

Only attach the shield to PE on the supply side.