

## 8 MAINTENANCE AND CLEANING

The following points have to be considered during the inspection:

- 1) All screws for installing the devices or parts of the device have to be tightly connected and must not be corroded.
- 2) There must not be any deformations on the housing, color lenses, fixations and installation spots (ceiling, suspension, trussing).
- 3) Mechanically moved parts must not show any traces of wearing and must not rotate with unbalances.
- 4) The electric power supply cables must not show any damage, material fatigue or sediments.

Further instructions depending on the installation spot and usage have to be adhered by a skilled installer and any safety problems have to be removed.



### CAUTION

Disconnect from mains before starting maintenance operation.



In order to make the lights in good condition and extend the life time, we suggest a regular cleaning to the lights.

- 1) Clean the inside and outside lens each week to avoid the weakness of the lights due to accumulation of dust.
- 2) Clean the fan each week.
- 3) A detailed electric check by approved electrical engineer each three month, make sure that the circuit contacts are in good condition, prevent the poor contact of circuit from overheating.

We recommend a frequent cleaning of the device. Please use a moist, lint- free cloth. Never use alcohol or solvents.

There are no serviceable parts inside the device. Please refer to the instructions under "Installation instructions".

Should you need any spare parts, please order genuine parts from your local dealer.



**ADD** F1-5, Block 3, No.95, Guangzhu Rd, Lanhe Town, Nansha District, Guangzhou 511480

**Tel.** +86 20 8499 2310/2320/2330

**Fax** +86 20 8499 2360

**E-mail** info@color-imagination.com

**Website** www.color-imagination.com

**Follow  
us on**



[www.facebook.com/color.imagination.1](http://www.facebook.com/color.imagination.1)



[www.youtube.com/user/colorimaginationj](http://www.youtube.com/user/colorimaginationj)



[https://twitter.com/Color\\_lighting](https://twitter.com/Color_lighting)

**Color**<sup>®</sup>  
IMAGINATION  
the POWER of DREAM

## DM1910T SMARTFACE 1910T



CE F IP20 t<sub>a</sub> 40°C t<sub>c</sub> 100°C

**User Manual**  
KEEP THIS MANUAL FOR FUTURE NEEDS

# 1 SAFETY INSTRUCTIONS



## CAUTION

Becareful with your operations. With a dangerous voltage you can suffer a dangerous electric shock when touching wires!

This device has left the factory in perfect condition. In order to maintain this condition and to ensure a safe operation, it is absolutely necessary for the user to follow the safety instructions and warning notes written in this user manual.



## IMPORTANT

Damages caused by the disregard of this user manual are not subject to warranty. The dealer will not accept liability for any resulting defects or problems.

If the device has been exposed to temperature changes due to environmental changes, do not switch it on immediately. The arising condensation could damage the device. Leave the device switched off until it has reached room temperature.

This device falls under protection-class I. Therefore it is essential that the device be earthed.

The electric connection must carry out by qualified person.

The device shall only be used with rated voltage and frequency.

Make sure that the available voltage is not higher than stated at the end of this manual.

Make sure the power cord is never crimped or damaged by sharp edges. If this would be the case, replacement of the cable must be done by an authorized dealer.

Always disconnect from the mains, when the device is not in use or before cleaning it. Only handle the power cord by the plug. Never pull out the plug by tugging the power cord.

During initial start-up some smoke or smell may arise. This is a normal process and does not necessarily mean that the device is defective, it should decrease gradually.

Please don't project the beam onto combustible substances.

Fixtures cannot be installed on combustible substances, keep more than 50cm distance with wall for smooth air flow, so there should be no shelter for fans and ventilation for heat radiation.

If the external flexible cable or cord of this luminaire is damaged, it shall be exclusively replaced by the manufacturer or his service agent or a similar qualified person in order to avoid a hazard.

21	Warm and white face 1	0 - 255
22	Face light and cold white 2	0 - 255
23	Warm and white face 2	0 - 255
24	Face light and cold white 3	0 - 255
25	Warm and white face 3	0 - 255
26	Face light and cold white 4	0 - 255
27	Warm and white face 4	0 - 255
28	Face light and cold white 5	0 - 255
29	Warm and white face 5	0 - 255
30	Face light and cold white 6	0 - 255
31	Warm and white face 6	0 - 255
32	Face light and cold white 7	0 - 255
33	Warm and white face 7	0 - 255
34	Face light and cold white 8	0 - 255
35	Warm and white face 8	0 - 255
36	Face light and cold white 9	0 - 255
37	Warm and white face 9	0 - 255
38	Face light and cold white 10	0 - 255
39	Warm and white face 10	0 - 255
40	colour	0 - 255
41	temperature	0 - 255
42	effect	0 - 255
43	Effect speed	0 - 255
43	reset	0 - 127
		128 - 255

Channel	Function	Dmx Value
1	Horizontal motion	0 - 255
2	Horizontal fine adjustment	0 - 255
3	vertical motion	0 - 255
4	Vertical fine tuning	0 - 255
5	Motor speed	0 - 255
6	Horizontal endless rotation	0 - 255
7	Vertical endless rotation	0 - 255
8	aiming	0 - 255
9	stroboscopic	0 - 3
		4 - 103
		104 - 107
		108 - 207
		208 - 212
		213 - 225
		226 - 238
		239 - 251
		252 - 255
10	red	0 - 255
11	green	0 - 255
12	blue	0 - 255
13	white	0 - 255
14	colour temperature	0 - 255
15	Color macro	0 - 255
16	effect	0 - 255
17	Effect speed	0 - 255
18	Surface light dimming	0 - 255
19	Surface light stroboscopic	0 - 3
		4 - 103
		104 - 107
		108 - 207
		208 - 212
		213 - 225
		226 - 238
		239 - 251
		252 - 255
20	Face light and cold white 1	0 - 255

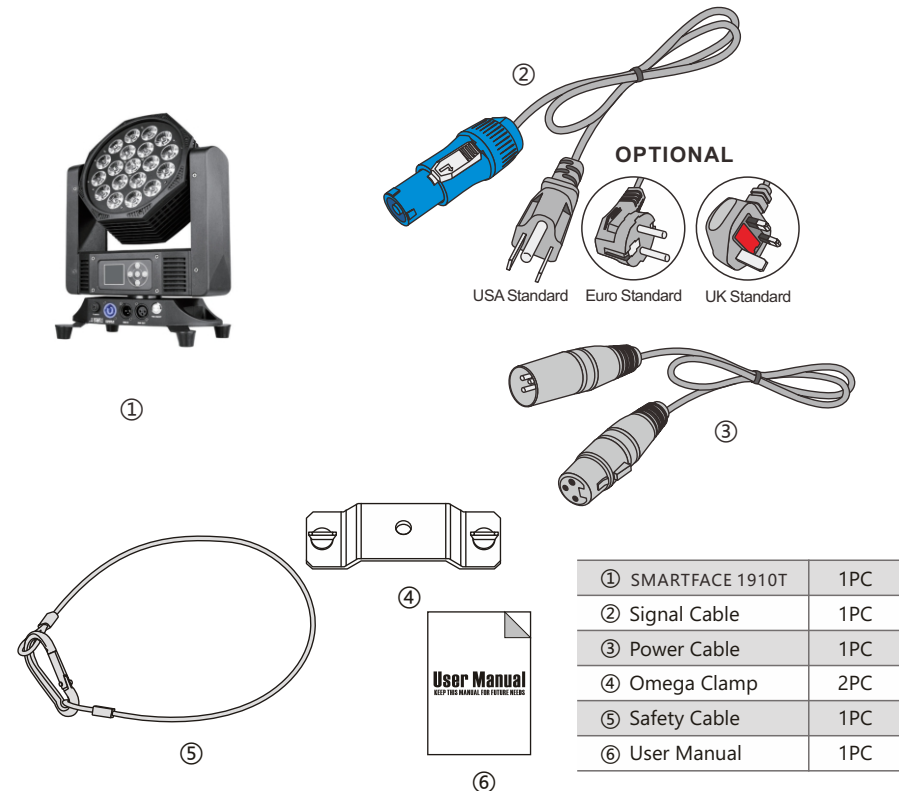
## 2 UNPACKING

The DOUBLE-SIDED designed SMARTFACE 1910T is an ultra compact and light weight stylish moving head WASH+STROBE light (2 Faces). Face 1 features 19\*10W 4-IN-1 RGBW LEDs which is designed with 3 individual rings. It's available for 2800K-5600K color temperature adjustment. Face 2 features 220\*0.2W 2-IN-1 LEDs (WW+CW in one) which is designed with 10 individual rings. It's available for 2500K-4600K color temperature adjustment. The fixture could be used not just only as a wash light (specially moving face light) but also as a remarkable moving strobe light.

It provides 360° continuous fast and smooth PAN/TILT movement with variable speed which delivers even more vivid visual effect to the show. The fixture supports DMX, RDM (Remote Device Management).

It features excellent color mixing, quiet running and flicker free control. The fixture is built in with different internal dynamic effect with variable speed. The moving head also features optimum optic design integrated with extremely effective aluminum heat sink system.

The SMARTFACE 1910T is designed for applications as concerts, TV studios, banquet halls, bars, pubs, DJ entertainment, ballrooms, etc.



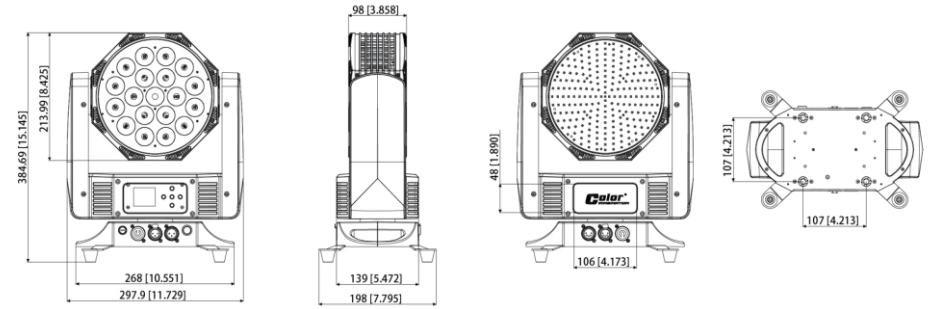
### 3 FEATURES & SPECIFICATIONS

Face 1:  
 19\*10W 4-IN-1 LEDs (RGBW)  
 3 Individual control rings  
 Face 2:  
 220\*0.2W 2-IN-1 LEDs (WW+CW in one)  
 10 Individual control rings  
 Flicker free operation for broadcast TV and FILM  
 Face 1:  
 High efficiency optic system  
 25° Beam angle (other angles optional)  
 35° Field angle  
 Face 2:  
 120° Field angle  
 High output  
 PAN: 2 modes  
 1. 360° Continuous movement  
 2. 540° (8/16 bit)  
 TILT: 2 modes  
 1. 360° Continuous movement  
 2. 270° (8/16 bit)  
 Fast, quiet, smooth and precise 2-Phase motors  
 Smooth, fast and precise resolution for PAN/TILT movement with low noise operation  
 Scan position memory, auto reposition after unexpected movement  
 PAN/TILT reversible  
 Face 1:  
 RGBW  
 Smooth and pure color mixing capability  
 CTO, 2800K-5600K color temperature adjustment  
 Face 2:  
 Warm white+cold white  
 Smooth and pure color mixing capability  
 CTO, 2500K-4600K color temperature adjustment  
 Different built-in dynamic effect with variable speed  
 Different preset colors  
 0-25Hz LED shutter/strobe effect with variable speed  
 0-100% Smooth linear LED dimming  
 25/43 DMX channels USITT DMX-512  
 DMX512, master-slave, sound or auto operation  
 DMX recorder and edit function integrated  
 RDM available (Remote Device Management)  
 Art-NET (Optional)  
 Wireless receiver system built-in (Optional)  
 Shielded input signal protection for stable signal without interference  
 RJ45 etherCON IN/OUT (Optional with Art-Net)  
 3-Pin and 5-pin XLR DMX connectors IN/OUT  
 Software up-datable through DMX connectors  
 Mult units up-datable in daisy chain  
 Electronic supply with active PFC  
 AC100-240V 50/60Hz  
 PowerCON connectors IN&OUT  
 190W Power consumption  
 -25°C to 45°C ambient temperature  
 IP20 protection rating

21	Warm and white face	0 - 255
22	colour temperature	0 - 255
23	effect	0 - 255
24	Effect speed	0 - 255
25	reset	0 - 127
		128 - 255

## 7 DMX CHANNELS

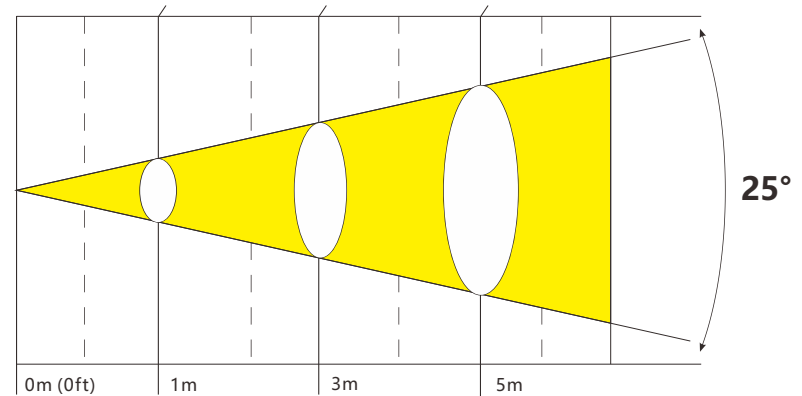
Channel	Function	Dmx Value
1	Horizontal motion	0 - 255
2	Horizontal fine adjustment	0 - 255
3	vertical motion	0 - 255
4	Vertical fine tuning	0 - 255
5	Motor speed	0 - 255
6	Horizontal endless rotation	0 - 255
7	Vertical endless rotation	0 - 255
8	aiming	0 - 255
9	stroboscopic	0 - 3
		4 - 103
		104 - 107
		108 - 207
		208 - 212
		213 - 225
		226 - 238
		239 - 251
		252 - 255
10	red	0 - 255
11	green	0 - 255
12	blue	0 - 255
13	white	0 - 255
14	colour temperature	0 - 255
15	Color macro	0 - 255
16	effect	0 - 255
17	Effect speed	0 - 255
18	Surface light dimming	0 - 255
19	Surface light stroboscopic	0 - 3
		4 - 103
		104 - 107
		108 - 207
		208 - 212
		213 - 225
		226 - 238
		239 - 251
		252 - 255
20	Face light and cold white	0 - 255



## 4 PHOTOMETRIC DATA

**Photometric Beam Angle Data** 25° Beam Angle LUX × 0.0929 = FC

<b>R</b>	5400/501	609/56	173/16
<b>G</b>	12100/1124	1540/143	514/47
<b>B</b>	671/62	91/8	36/3
<b>W</b>	12170/1130	1505/139	507/47
<b>RGBW</b>	30300/2815	3565/331	1150/107 (LUX)

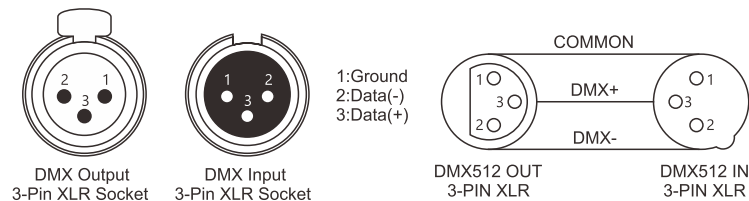


## 5 DMX-512 CONTROL CONNECTIONS

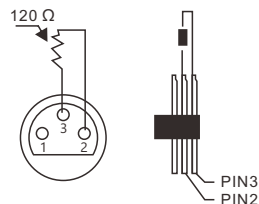
Connect the provided XLR cable to the female 3-pin XLR output of your controller and the other side to the male 3-pin XLR input of the architectural. You can chain multiple

Architectural together through serial linking. The cable needed should be two core, screened cable with XLR input and output connectors. Please refer to the diagram below.

DMX-512 connection with DMX terminator.



For installations where the DMX cable has to run a long distance or is in an electrically noisy environment, such as in a discotheque, it is recommended to use a DMX terminator. This helps in preventing corruption of the digital control signal by electrical noise. The DMX terminator is simply an XLR plug with a 120  $\Omega$  resistor connected between pins 2 and 3, which is then plugged into the output XLR socket of the last fixture in the chain. Please see illustrations below.



## 6 MENU OPERATIONS

Main Menu	Second	Third	Fourth
Dmx Address	000 - 512		
Fixture	Dmx Mode	STD / EXT	
	Run Mode	DMX / Host / Sound	
	Pan Invert	Close / Open	
	Tilt Invert	Close / Open	
	No Dmx Signal	Clear / Hold	
	Sound Control	1 -- 99	
Manual	Pan	000 - 255	
	Pan Fine	000 - 255	
	Tilt	000 - 255	
	Tilt Fine	000 - 255	
	?	?	
Information	Time	Current Time	xxxH
		Total Time	xxxH
	Sensor	All Sensor are ok!	
	Temperature	Head Temp	xxxC
Factory	Software Version	Panel	Vx.xx
	Password	000 - 255	
	Pan	000 - 255	
Fixture Reset	Tilt	000 - 255	
	Motor Reset	Cance / Run	
Display	Factory	Cance / Run	
	Language	CH / EN	
	Display Flip	Normal / Reverse	
	Display Mode	60s / Show	