



Modular Pressure Sequence Valve

Model: ZDZ6DP-1XJ



- ▶ Size 6
- ◆ Maximum working pressure 250bar
- ◆ Maximum flow rate 60L/min

Contents

Function description, sectional drawing	02
Models and specifications	02
Technical parameters	03
Component size	04

Features

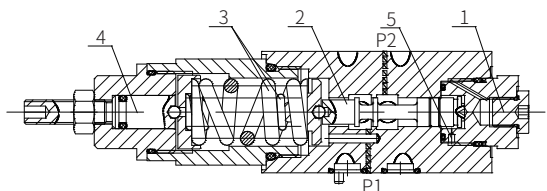
- Sandwich plate type
- Mounting surface according to DIN24340 A and ISO4401
- With pressure gauge connection

Function description, sectional drawing

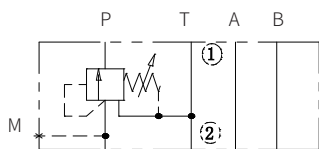
The ZDZ6D valve is sandwich plate type direct operated sequence valve, it is used for secondary circuit pressure dependent sequential switching.

The sequence pressure is setting via the adjusting element (4). The control spool (2) is hold in the initial position by the compression spring (3), the valve is closed. The pressure in port P1 acts on the spool area of the control spool (2) via the control line (5) opposite the compression spring.

When the pressure in port P1 exceeds the setting value of the spring (3), the control spool (2) moves toward the spring to open the port P. The fluid flows from P1 to P2. The pressure gauge connection (1) is installed to monitor the pressure of the sequence.



Functional symbol: (①= Valve side, ②= Subplate side)

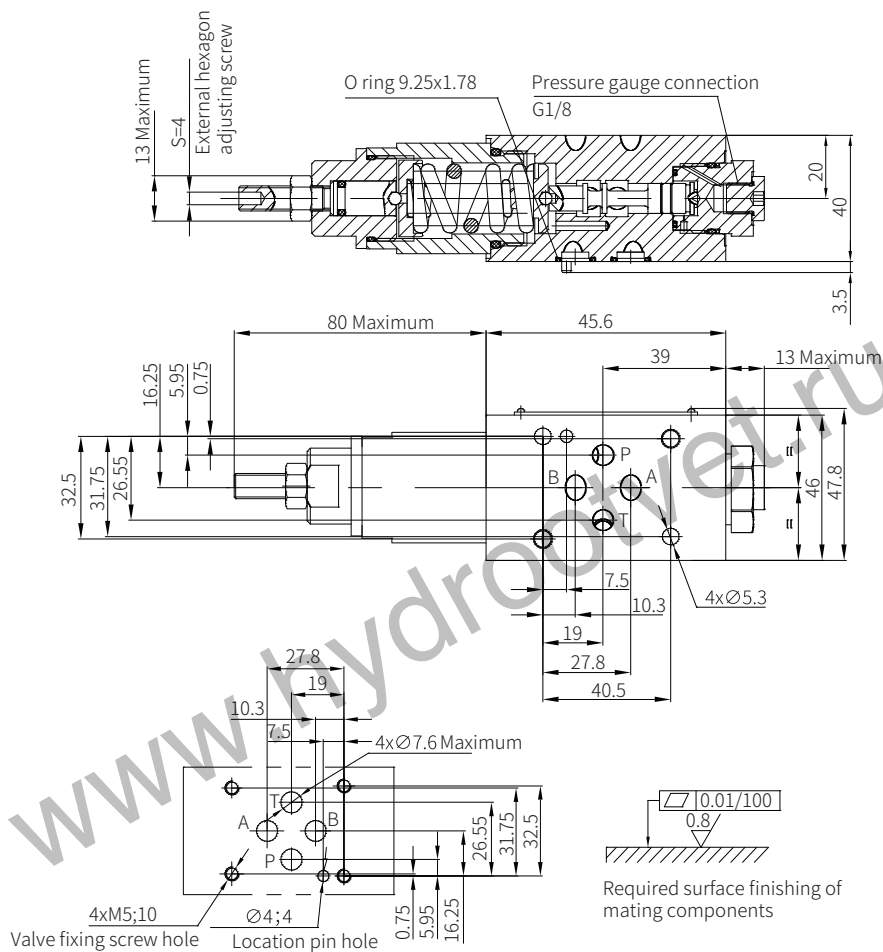


Technical parameters

Medium		Mineral oil - for NBR seal and FKM seal Phosphate - for FKM seal
Hydraulic oil temperature range	°C	-30 to +80 (NBR seal) -20 to +80 (FKM seals)
Viscosity range	mm ² /s	10 to 800
Cleanliness of oil		The maximum allowable pollution level of oil is NAS1638 Class 9 and ISO4406 Class 20/18/15
Maximum working pressure (inlet)	bar	315
Maximum sequencing pressure	bar	250
Minimum initial pressure	bar	20
Maximum flow	L/min	60

Models and specifications

	Z	DZ	6	D	P	2	1XJ	25	B	*
sandwich plate valve=	Z									
sequence valve		=DZ								
size 6			=6							
direct operated				=D						
pressure reducing in port P					=P					
screw adjustment						=2				
							1XJ=	25=	B=	*
							10 to 19 series (10 to 19 series installation and connection size unchanged)	pressure adjusting range 20-250 bar	pressure measurement port thread G1/8	more information in text



Valve fixing screw:

M5 -10.9 grade GB/T70.1, internal hexagon adjusting screw or LT30.02, stud with LT30.01 nut

Tightening torque $M_A=7.8$ Nm

The length is determined by the stacking height and it must be ordered separately.