

H-HMC液压马达

H-HMC hydraulic motors



1、产品特点/ Product Feature	88
2、产品标识说明/ Ordering Code	88
3、型号举例/ Example	88
5、安装联接尺寸/ Installation Dimensions	
H-HMC100系列/ H-HMC100 Series	89
H-HMC125系列/ H-HMC125 Series	93
H-HMC200系列/ H-HMC200 Series	100
H-HMC270/325系列/ H-HMC270/325 Series	107

H-HMC系列/H-HMC Series



产品特点 / Product Feature

H-HMC系列液压马达是我公司在H-HMB系列基础上最新研发的双排量低速大扭矩液压马达，继承了H-HMB系列静压平衡的优点，具有同H-HMB系列同样的高效率、高启动扭矩、高容积效率等。

H-HMC系列液压马达具有双排量功能，可以从较宽范围的排量中选择适合于各种应用需求的排量。可以通过远程控制、自动切换或手动切换来实现排量的切换，并且可以在马达运转中简单和轻松的实现。

其主要特点如下：

- 低速大扭矩；
- 高效率；
- 运转平稳；
- 宽排量范围可供选择；
- 可在运转时进行排量切换；
- 可选择电磁切换、手动切换、自动切换方式。

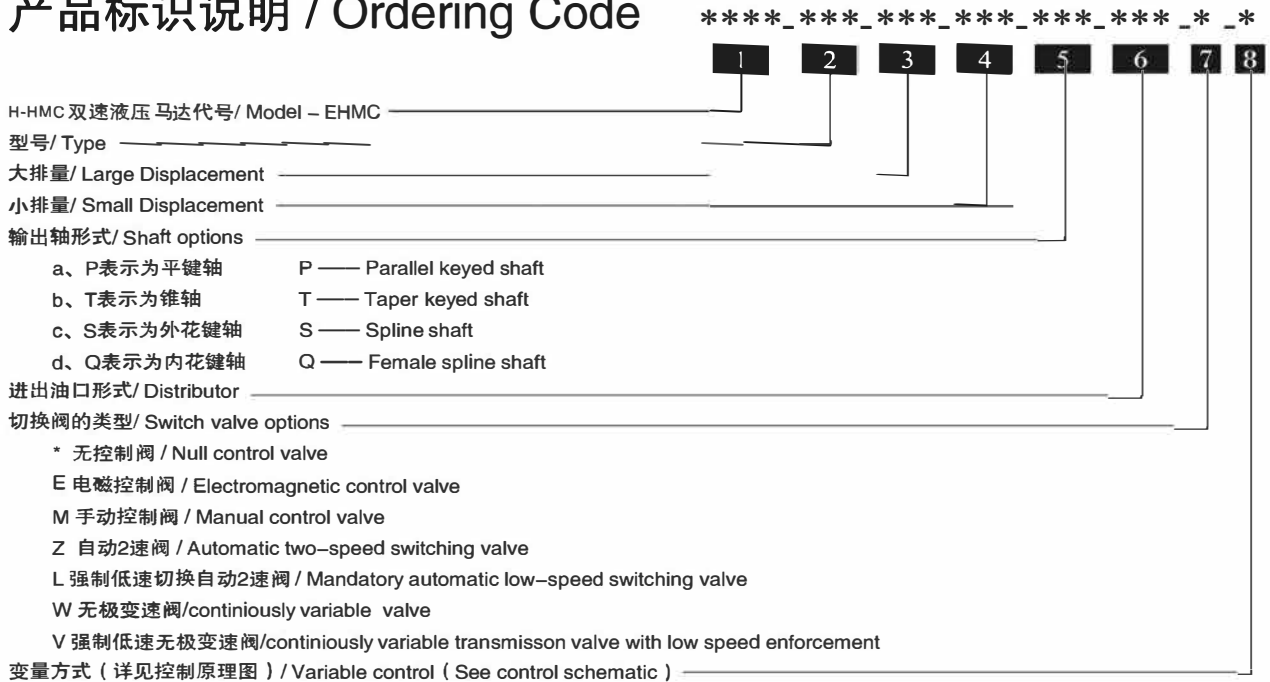
H-HMC series' dual speed hydraulic motor is an upgrade of the H-HMB series low-speed and high torque hydraulic motors. It inherits the H-HMB series hydrostatic balance structure, and is features with high efficiency, high starting torque, high volumetric efficiency, etc.

H-HMC series' dual speed hydraulic motor enables users to select displacement in a wide range for special working conditions. Users can switch the displacement by using a remote control or manual control, with control valve mounted on the motor. The displacement can be switched easily while the motor is running.

Main characteristics:

- Low speed, high-torque;
- High efficiency;
- Stable performance;
- Wide-range option of displacement;
- Switchable displacement while the motor is running;
- Switch option: electromagnetic, manual, automatic.

产品标识说明 / Ordering Code



型号举例 / Example

H-HMC	200	3100	1000	S71	F02	M	C
-------	-----	------	------	-----	-----	---	---

马达代号/ Model	H-HMC
型号/ Type	200
大排量/ Large displacement	3100 ml/r
小排量/ Small displacement	1000 ml/r
输出轴/ Shaft	S71
进出油口形式/ Distributor	F02
切换阀的类型/ Type of switch valve	M
变量控制方式/ Variable control	C

- H-FM
- H-GM
- H-QJM
- H-HMB
- H-HMC
- H-CA
- H-CB
- H-MS
- HA6V
- HA2F

H-HMC100系列/H-HMC100 Series

技术参数 / Technical Specification

名义排量 Nominal Displacement	ml/r	1600	1500	1400	1300	1200	1100	1000	900	800	700	600	500	400	300	200	100
排量 Displacement	ml/r	1580	1481	1383	1284	1185	1086	987	889	790	691	592	494	395	296	197	98/0
单位扭矩 Unit torque	N.m/MPa	225	212	198	184	169	155	140	125	108	94	78	68	45	30	18	0
最高转速 Max. Speed	r/min	240	260	280	300	330	370	405	485	540	540	540	540	540	540	540	900
额定功率 Rated Power	KW	102	98	93	92	93	90	86	83	73	64	53	46	31	20	9	0
最大功率 Max. Power	KW	127	123	116	116	117	113	108	103	92	80	66	58	38	25	11	0
额定压力 Rated Pressure	MPa	23	23	23	23	23	23	23	23	23	23	23	23	23	23	23	1.5
最高压力 Max. Pressure	MPa	27.5	27.5	27.5	27.5	27.5	27.5	27.5	27.5	27.5	27.5	27.5	27.5	27.5	27.5	27.5	1.5

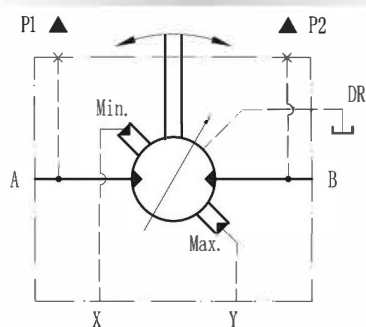
* H-HMC 100排量的选择范围/ H-HMC 100 displacement options

大排量为 / Large Displacement: 1600, 1500, 1400, 1300, 1200, 1100, 1000, 900, 800;

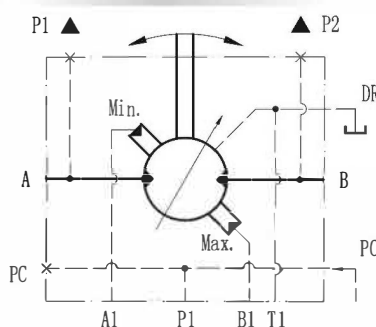
小排量为 / Small Displacement: 1100, 1000, 900, 800, 700, 600, 500, 400, 300, 200, 100, 0

控制原理图 / Control Schematic(编码标识/Ordering Code 8):

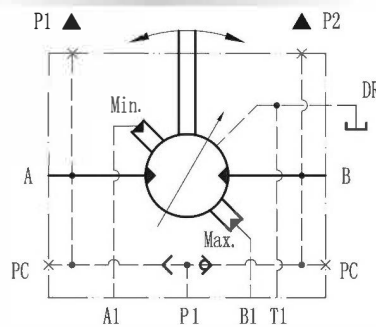
-A- 外控型
Control by external



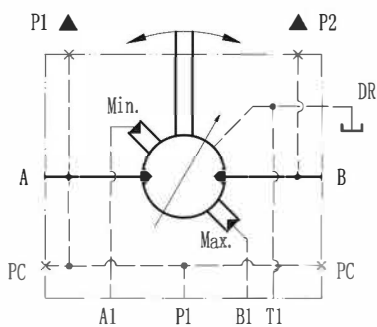
-B- PC外控型
Control by port pc



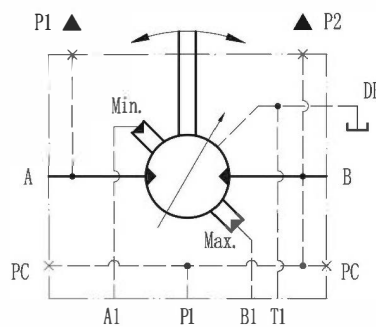
-C- 双向内控型
Control by A or B



-D- A口内控型
Control by port A



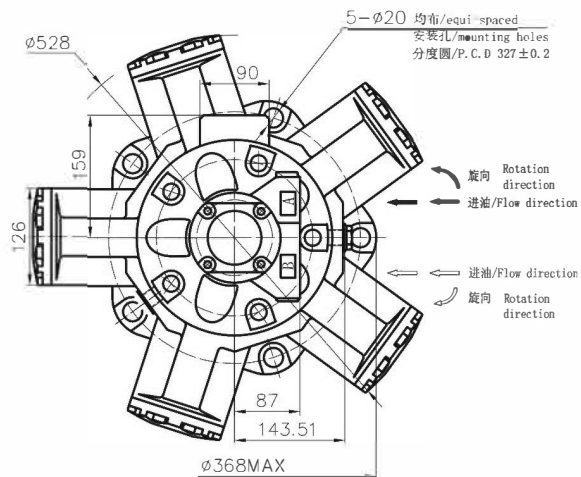
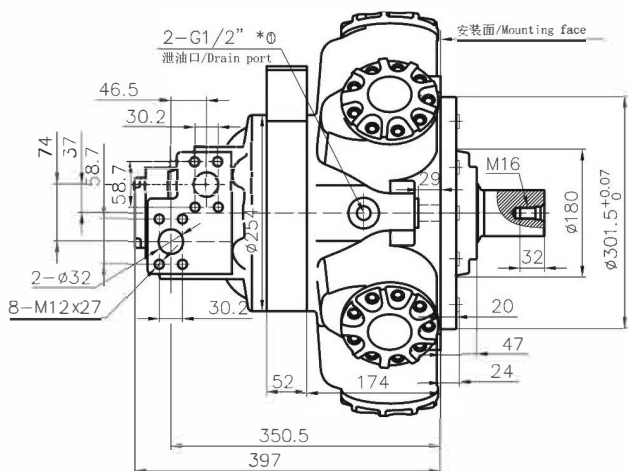
-E- B口内控型
Control by port B



H-HMC100系列/H-HMC100 Series

H-HMC100 外形及安装尺寸/ H-HMC100 Installation Dimensions

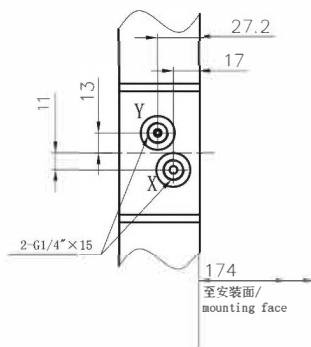
进出油口为F01的安装尺寸/With F01 Distributor



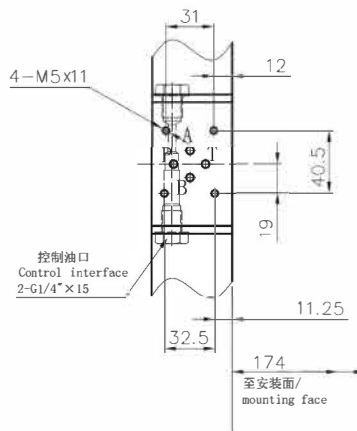
*①可选配UNF3/4"-16接头/Option: UNF3/4"-16

变量控制方法的安装尺寸/Variable Control Dimensions (编码标识/Ordering code 8)

A的安装尺寸/Dimensions



B&C&D 的安装尺寸/Dimensions



HFM

HGM

QJM

H-HMB

H-HMC

HCA

HCB

HMS

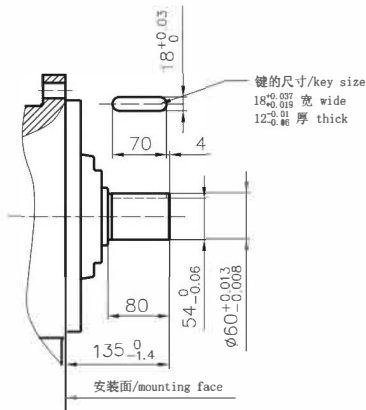
HA6V

HA2F

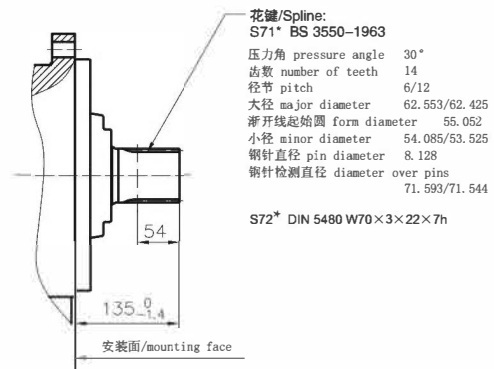
H-HMC100系列/H-HMC100 Series

H-HMC100 输出轴的安装尺寸/ H-HMC100 Shaft Options(编码标识/Ordering code 5)

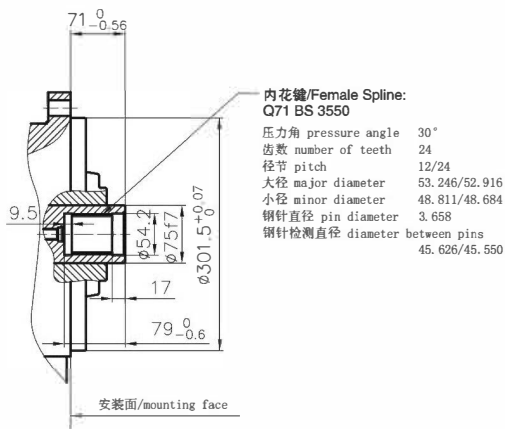
H-HMC100-P71



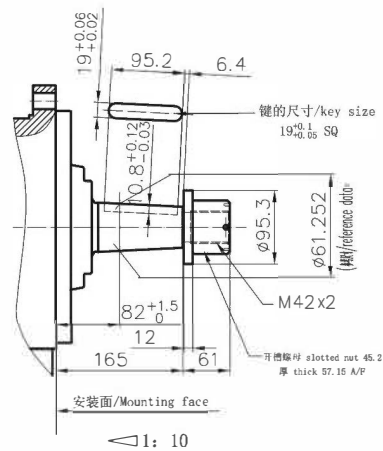
H-HMC100-S71*&S72*



H-HMC100-Q71



H-HMC100-T71

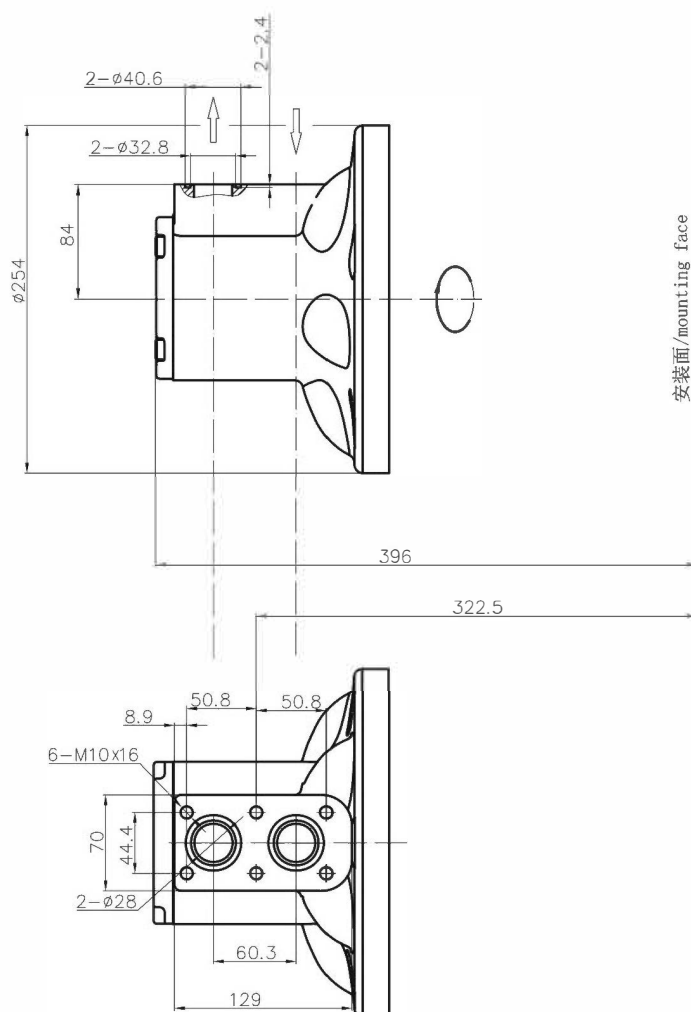


注释: S71*/S72* 为标准花键轴
 Notes: S71*/S72*=Standard Spline Shaft

H-HMC100系列/H-HMC100 Series

H-HMC100 外形及安装尺寸/ H-HMC100 Installation Dimensions

进出油口为F01B的安装尺寸/ F01B Distributor



HFM

HGM

QJM

H-HMB

H-HMC

HCA

HCB

HMS

HA6V

HA2F

H-HMC125系列/H-HMC125 Series

技术参数 / Technical Specification

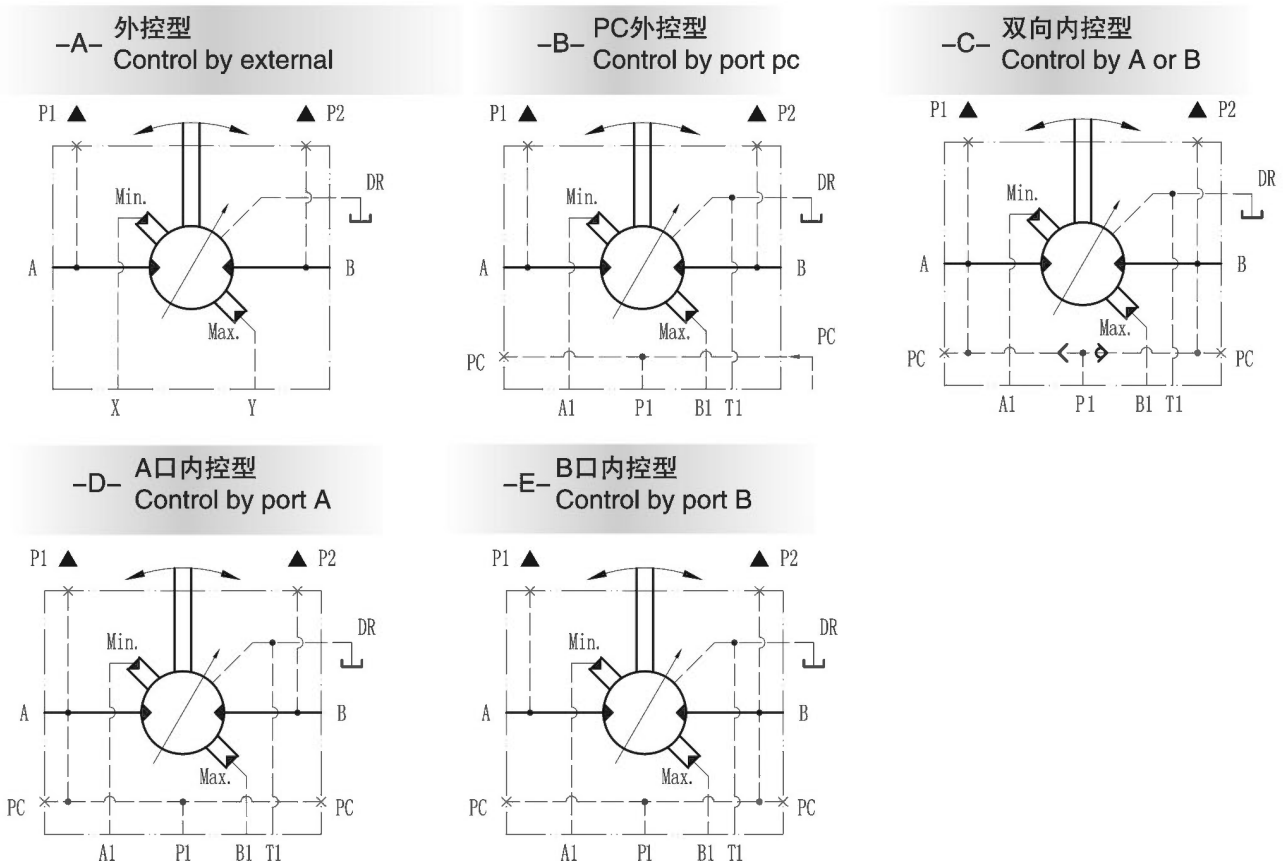
名义排量 /Nominal Displacement 编码标识/Ordering Code 3 4	ml/r	2100	2000	1800	1600	1500	1300	1200	1000	830	670	510	350	190
排量 Displacement	ml/r	2066	1973	1811	1649	1487	1325	1163	1001	839	677	515	353	191
单位扭矩 Unit Torque	N.m/MPa	293	281	258	231	206	180	154	125	100	79	57	39	6
最高转速F01 Max. Speed	r/min	169	188	204	223	246	265	305	350	395	485	540	540	540
最高转速F02 Max. Speed	r/min	220	245	265	290	320	320	320	320	320	320	320	320	320
额定功率 Rated Power	KW	105	105	105	105	97	84	72	59	47	37	27	18	3
最大功率 Max. Power	KW	132	132	132	132	121	106	90	73	59	46	33	23	4
额定压力 Rated Pressure	MPa	23	23	23	23	23	23	23	23	23	23	23	23	23
最高压力 Max. Pressure	MPa	27.5	27.5	27.5	27.5	27.5	27.5	27.5	27.5	27.5	27.5	27.5	27.5	27.5

* H-HMC 125排量的选择范围/ H-HMC 125 displacement options

大排量为 / Large Displacement: 2100, 2000, 1800, 1600

小排量为 / Small Displacement: 1600, 1500, 1300, 1200, 1000, 830, 670, 510, 350, 190, 110, 0

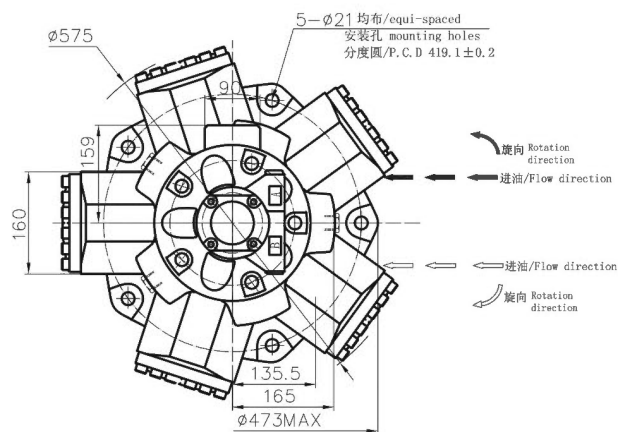
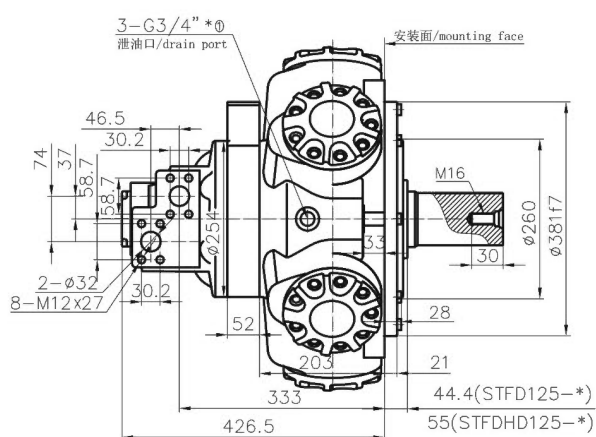
控制原理图 / Control Schematic(编码标识/Ordering Code 8):



H-HMC125系列/H-HMC125 Series

H-HMC125 外形及安装尺寸/ H-HMC125 Installation Dimensions

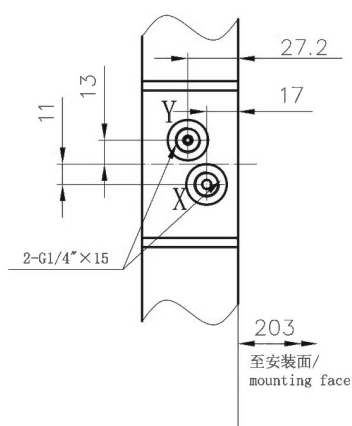
进出油口为F01的安装尺寸/With F01 Distributor



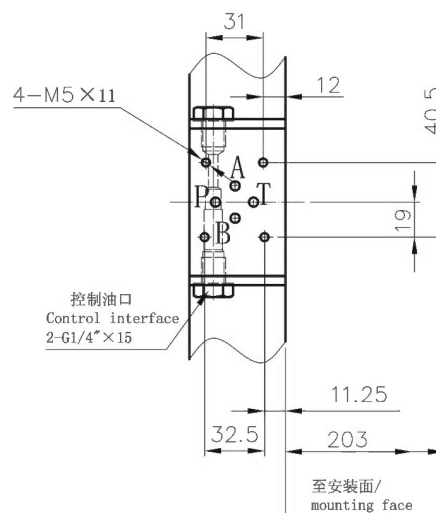
*①可选配UNF3/4"-16接头/Option: UNF3/4"-16

变量控制方式的安装尺寸/Variable Control Dimensions (编码标识/Ordering code 8)

A的安装尺寸/Dimensions



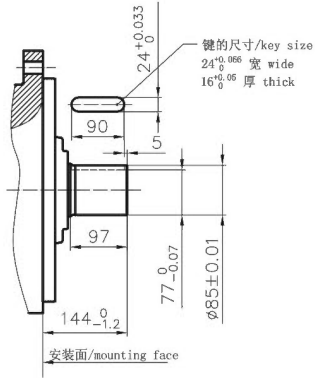
B&C&D的安装尺寸/Dimensions



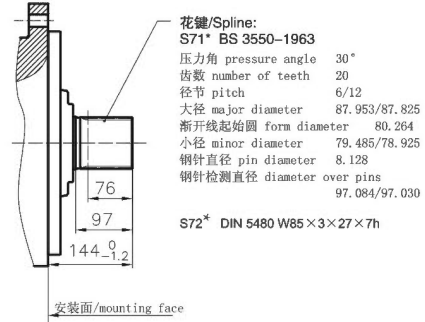
H-HMC125系列/H-HMC125 Series

H-HMC125 输出轴的安装尺寸/ H-HMC125 Shaft Options(编码标识/Ordering code 5)

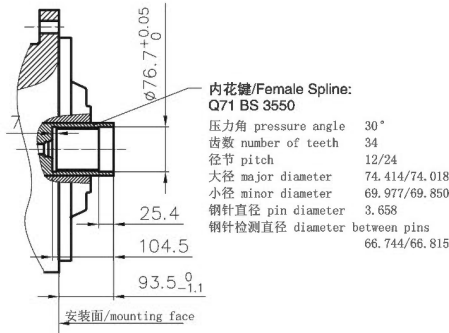
H-HMC125-P71



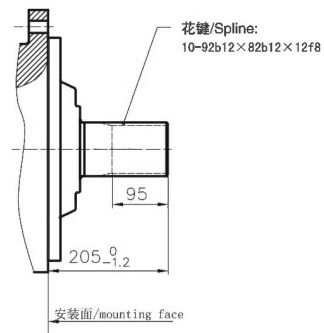
H-HMC125-S71*&S72*



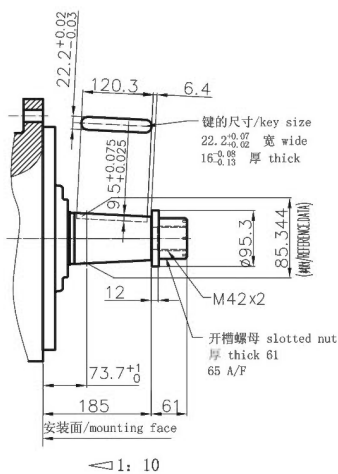
H-HMCHD125-Q71



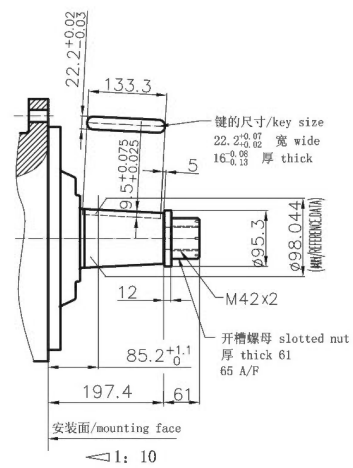
H-HMCHD125-S73



H-HMCC125-Q71



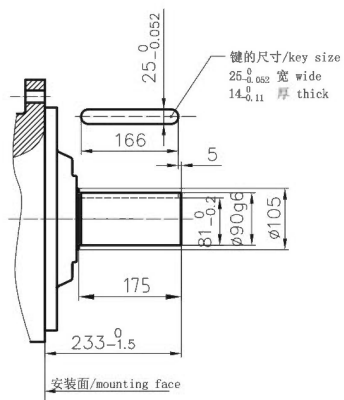
H-HMCHD125-T72



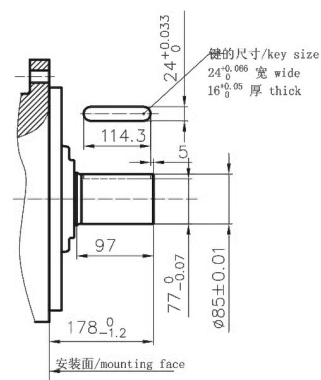
注释: S71*/S72* 为标准花键轴
Notes: S71*/S72*=Standard Spline Shaft

H-HMC125系列/H-HMC125 Series

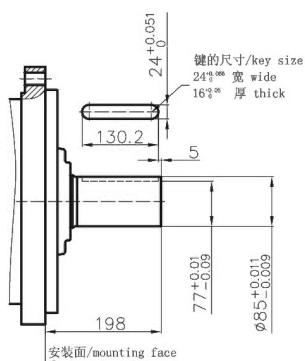
H-HMCHD125-P72



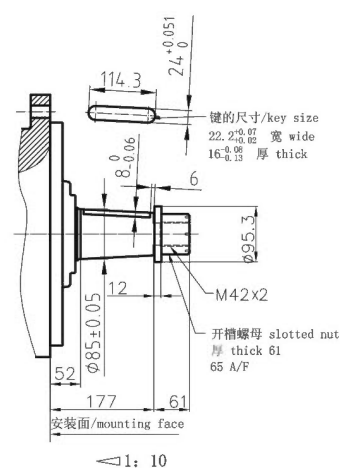
H-HMC125-P73



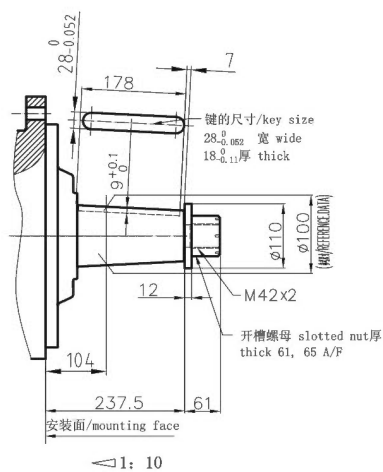
H-HMC125-P76



H-HMCHD125-T73



H-HMC125-T75



注释: S71*/S72* 为标准花键轴
Notes: S71*/ S72*=Standard Spline Shaft

HGM

QJM

H-HMB

H-HMC

HCA

HCB

HMS

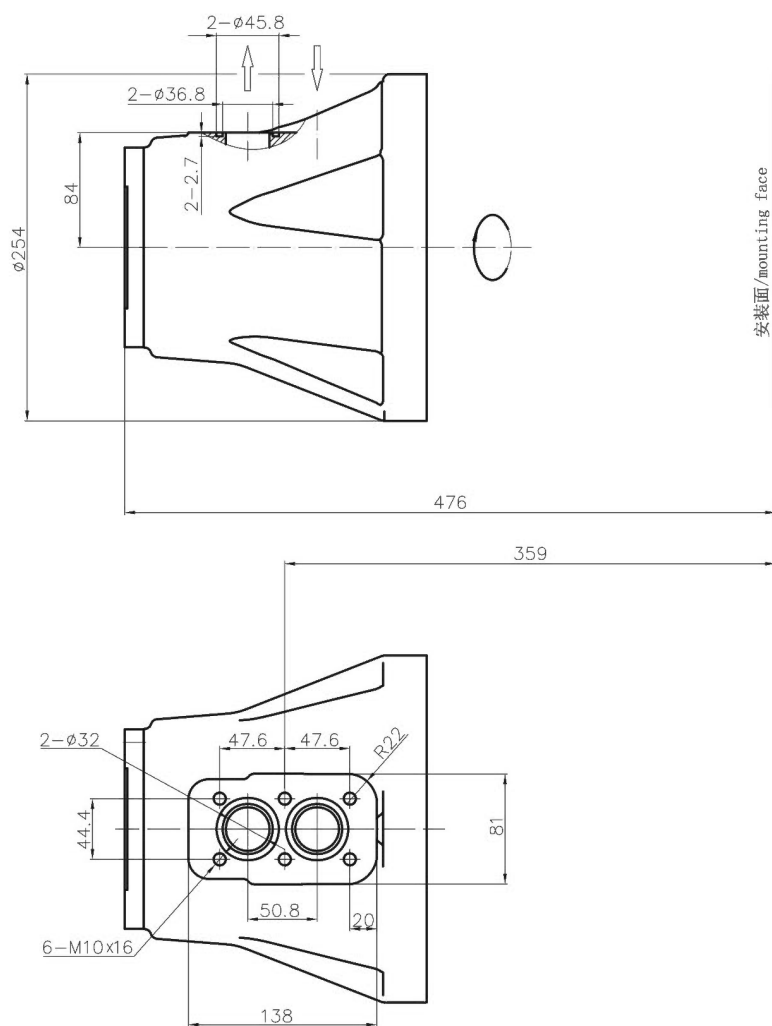
HA6V

HA2F

H-HMC125系列/H-HMC125 Series

H-HMC125 外形及安装尺寸/ H-HMC125 Installation Dimensions

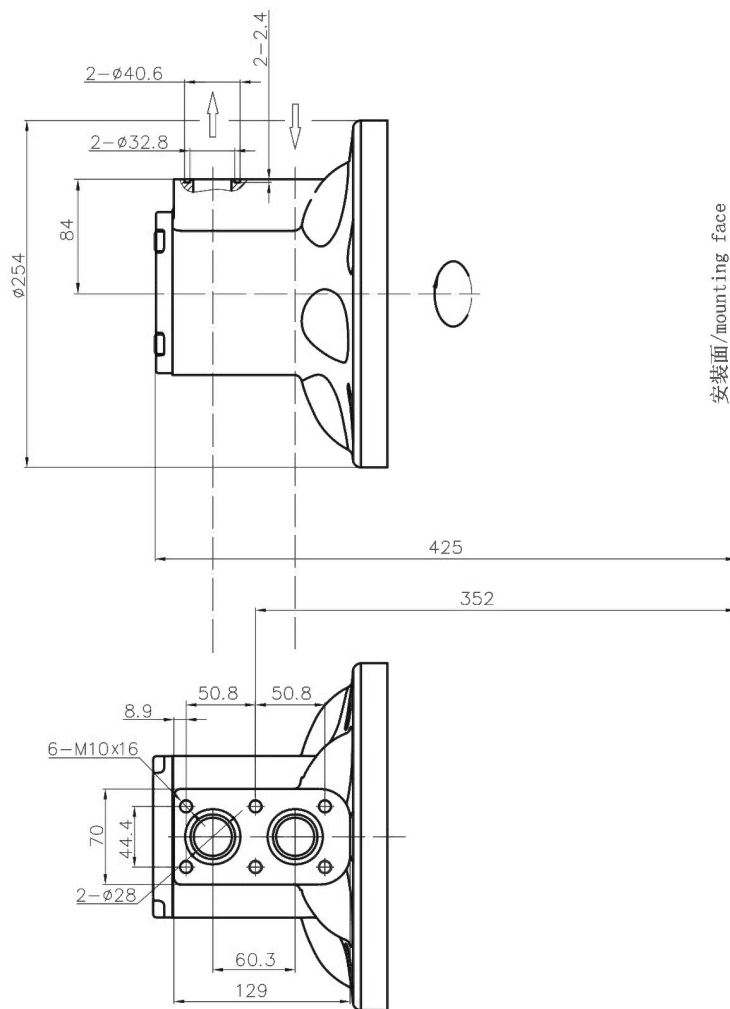
进出油口为F02B的安装尺寸/ F02B Distributor



H-HMC125系列/H-HMC125 Series

H-HMC125 外形及安装尺寸/ H-HMC125 Installation Dimensions

进出油口为F01B的安装尺寸/ F01B Distributor



HFM

HGM

QJM

H-HMB

H-HMC

HCA

HCB

HMS

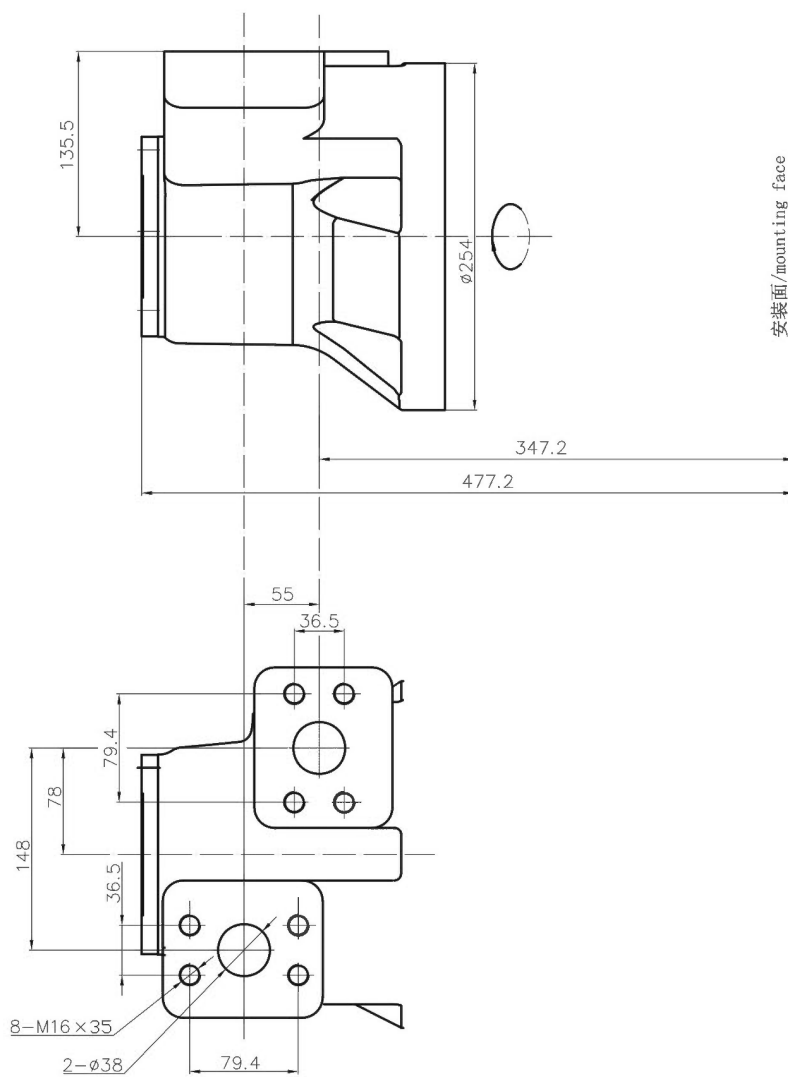
HA6V

HA2F

H-HMC125系列/H-HMC125 Series

H-HMC125 外形及安装尺寸/ H-HMC125 Installation Dimensions

进出油口为F02的安装尺寸/ F02 Distributor



H-HMC200系列/H-HMC200 Series

技术参数 / Technical Specification

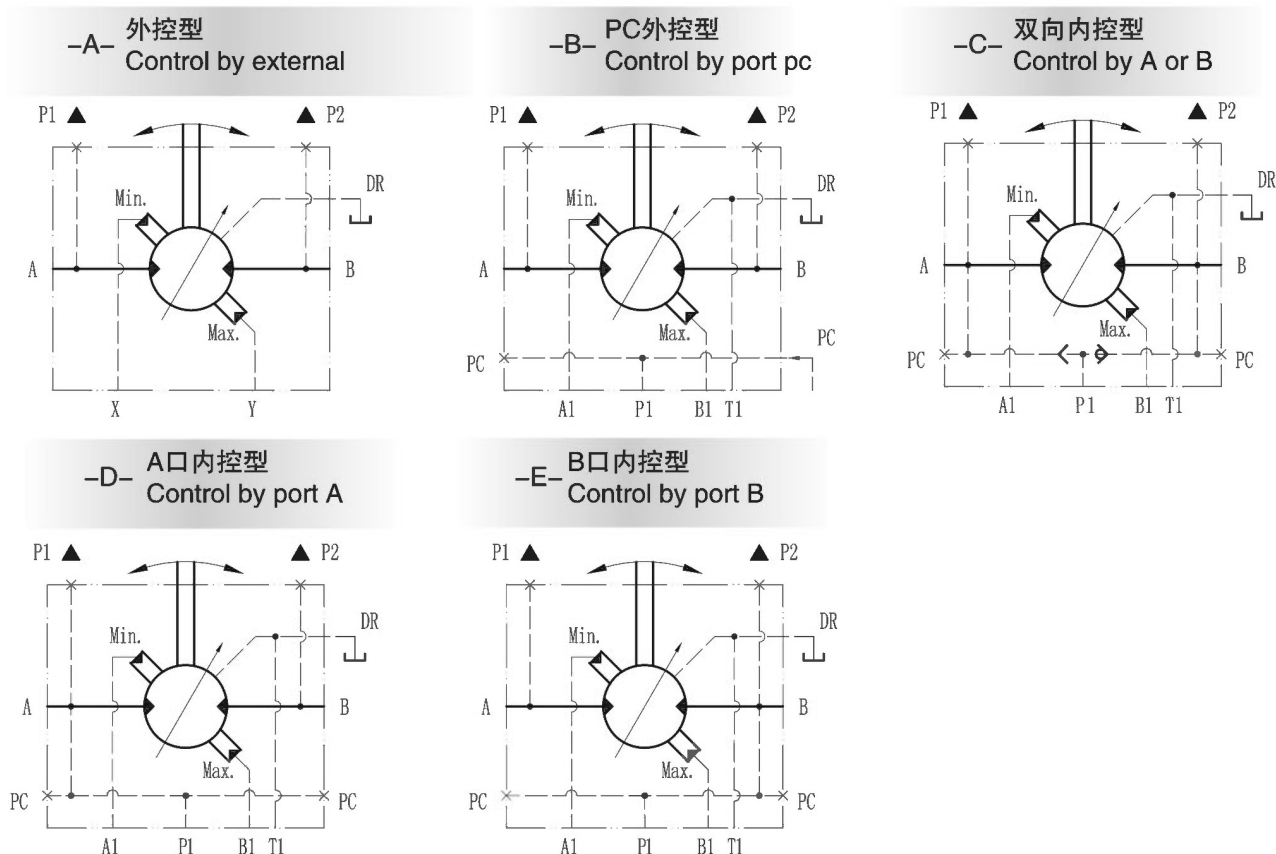
名义排量 / Nominal Displacement 编码标识/Ordering Code 3 4	ml/r	3100	2900	2800	2600	2400	2300	2100	2000	1800	1600	1500	1300	1200	1000	830	670	510	350	190	110	
排量 Displacement	ml/r	3080	2958	2796	2634	2472	2310	2148	1973	1811	1649	1487	1325	1163	1001	839	677	515	353	191	109/0	
单位扭矩 Unit Torque	N.m/MPa	447	422	400	375	351	326	300	281	258	231	206	180	154	125	100	79	57	30	6	0	
最高转速F01 Max. Speed	r/min	110	115	125	135	140	150	160	175	190	210	230	265	305	350	395	485	540	540	540	900	
最高转速F02 Max. Speed	r/min	155	160	175	190	196	210	220	245	265	290	320	320	320	320	320	320	320	320	320	320	900
额定功率 Max. Power	KW	115	115	115	112	108	108	104	101	100	98	97	90	83	67	54	42	31	16	3	0	
最大功率 Max. Power	KW	145	145	145	140	135	134	130	126	125	123	121	113	103	84	67	53	38	20	4	0	
额定压力 Rated Pressure	MPa	23	23	23	23	23	23	23	23	23	23	23	23	23	23	23	23	23	23	23	1.5	
最高压力 Max. Pressure	MPa	27.5	27.5	27.5	27.5	27.5	27.5	27.5	27.5	27.5	27.5	27.5	27.5	27.5	27.5	27.5	27.5	27.5	27.5	27.5	27.5	1.5

* H-HMC200排量的选择范围 / H-HMC200 displacement options

大排量为 / Large Displacement: 3100, 2900, 2800, 2600, 2400, 2300, 2100, 2000, 1800, 1600

小排量为 / Small Displacement: 2300, 2100, 2000, 1800, 1600, 1500, 1300, 1200, 1000, 830, 670, 510, 350, 190, 110, 0

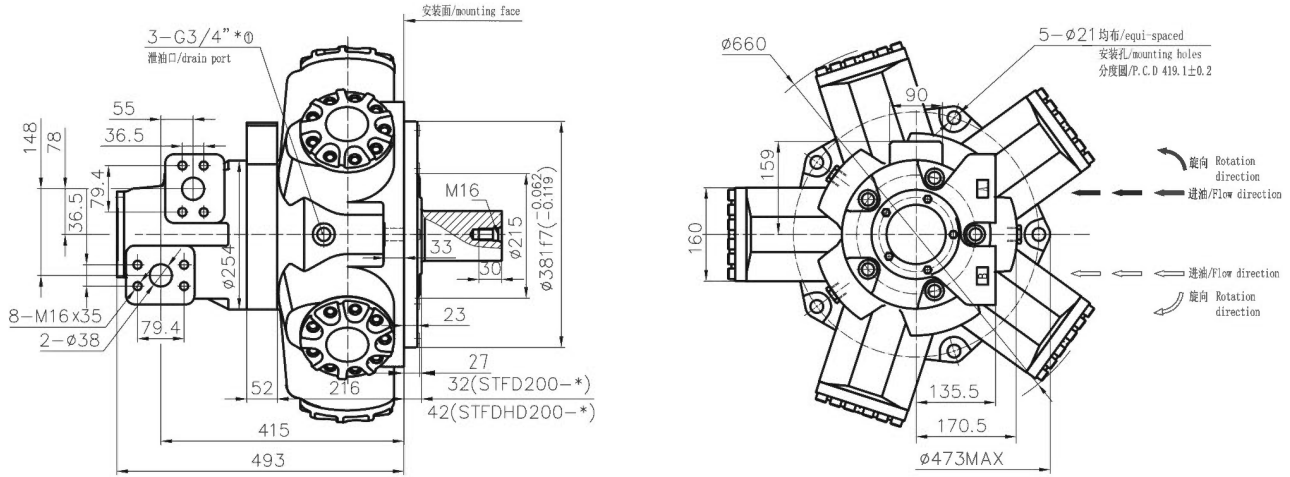
控制原理图 / Control Schematic(编码标识/Ordering Code 8):



H-HMC200系列/H-HMC200 Series

H-HMC200 外形及安装尺寸/ H-HMC200 Installation Dimensions

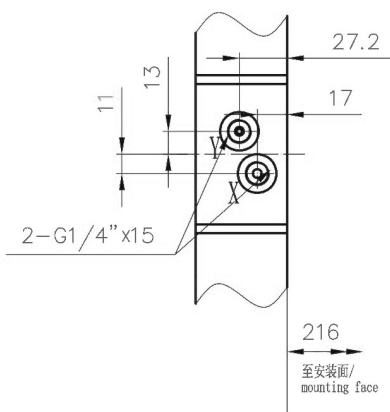
进出油口为F02的安装尺寸/With F02 Distributor



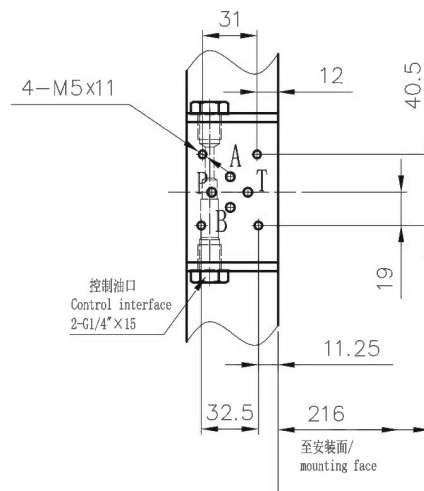
* $\text{\textcircled{1}}$ 可选配UNF3/4"-16接头/Option: UNF3/4"-16

变量控制方式的安装尺寸/Variable Control Dimensions (编码标识/Ordering code B)

A的安装尺寸/Dimensions



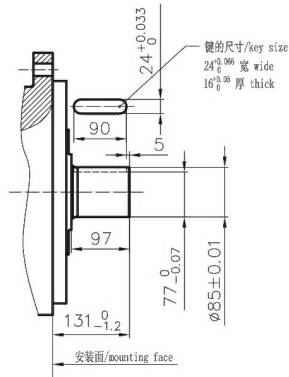
B&C&D的安装尺寸/Dimensions



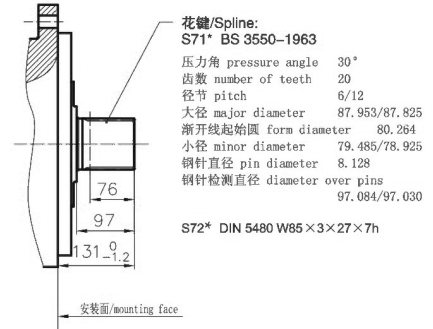
H-HMC200系列/H-HMC200 Series

H-HMC200 输出轴的安装尺寸/ H-HMC200 Shaft Options(编码标识/Ordering code 5)

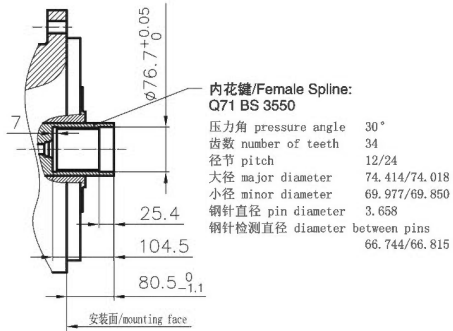
H-HMC200-P71



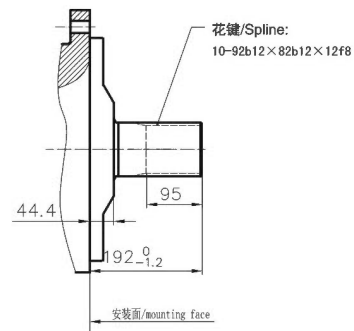
H-HMC200-S71*&S72*



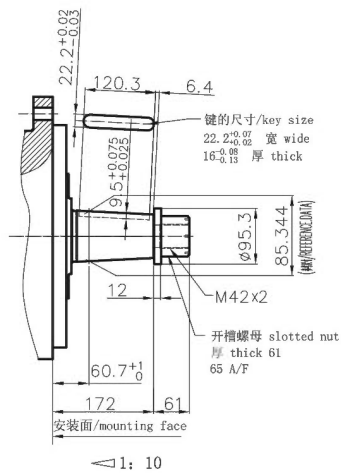
H-HMCHD200-Q71



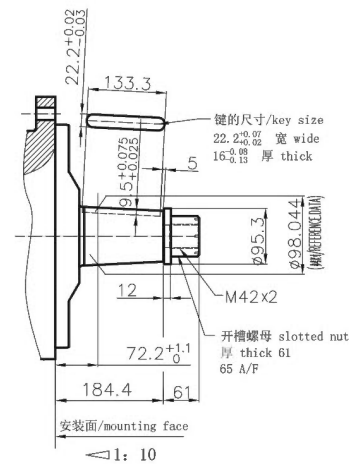
H-HMCHD200-S73



H-HMC200-T71



H-HMCHD200-T72



注释: S71*/S72* 为标准花键轴
 Notes: S71*/S72*=Standard Spline Shaft

HFM

HGM

QJM

H-HMB

H-HMC

HCA

HCB

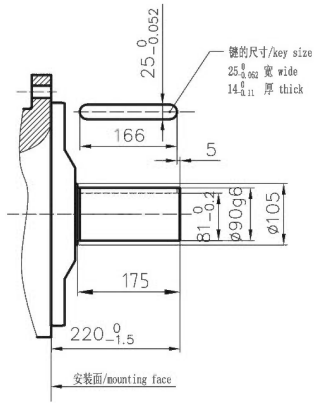
HMS

HA6V

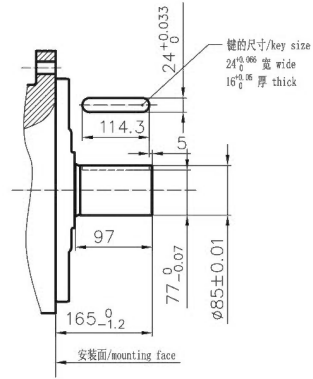
HA2F

H-HMC200系列/H-HMC200 Series

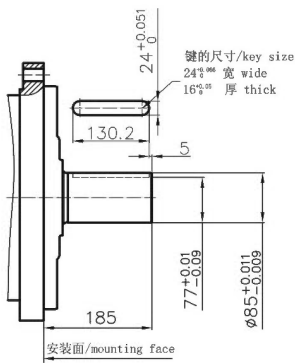
STFDHD200-P72



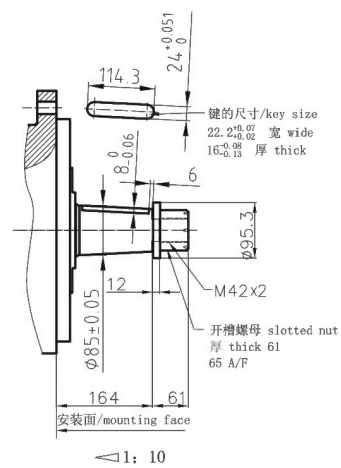
H-HMC200-P73



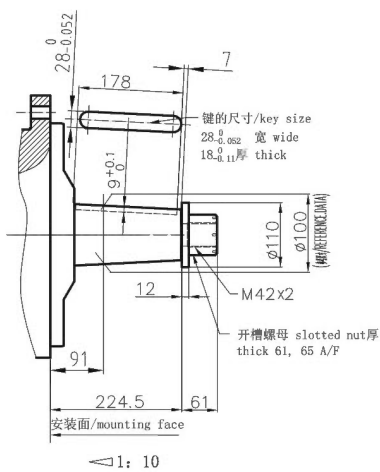
H-HMC200-P76



H-HMC200-T73



H-HMCHD200-T75



注释: S71*/S72* 为标准花键轴
Notes: S71*/ S72*=Standard Spline Shaft

HFM

HGM

QJM

H-HMB

H-HMC

HCA

HCB

HMS

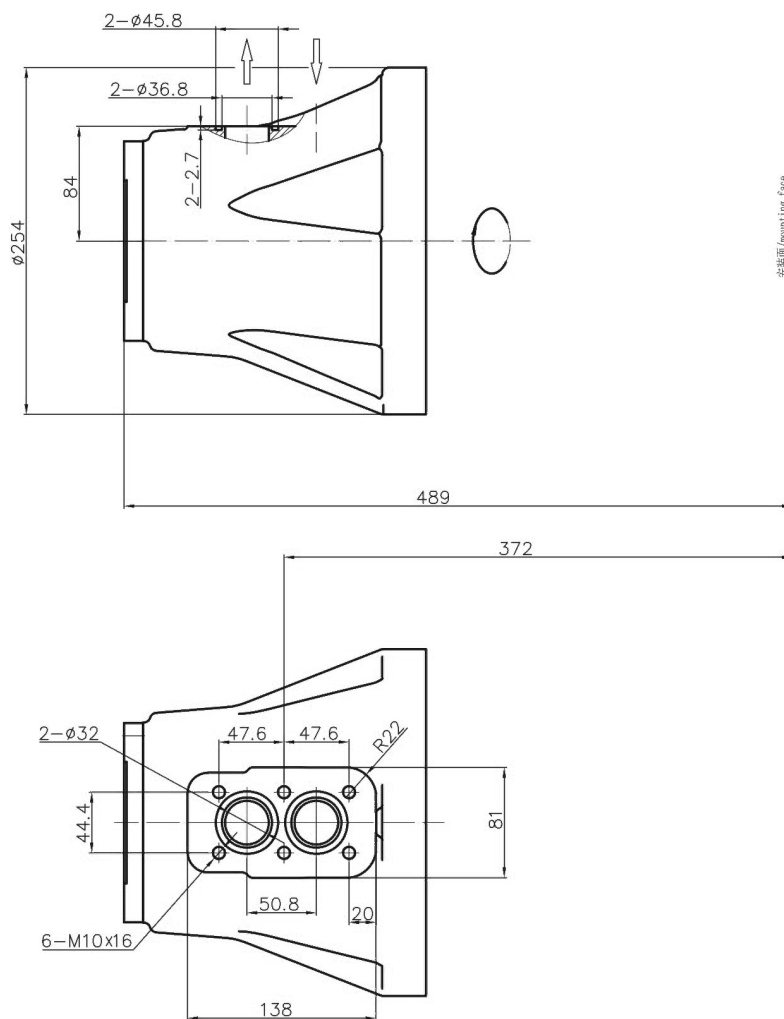
HA6V

HA2F

H-HMC200系列/H-HMC200 Series

H-HMC200 外形及安装尺寸 / H-HMC200 Installation Dimensions

进出油口为F02B的安装尺寸 / F02B Distributor



HFM

HGM

QJM

H-HMB

H-HMC

HCA

HCB

HMS

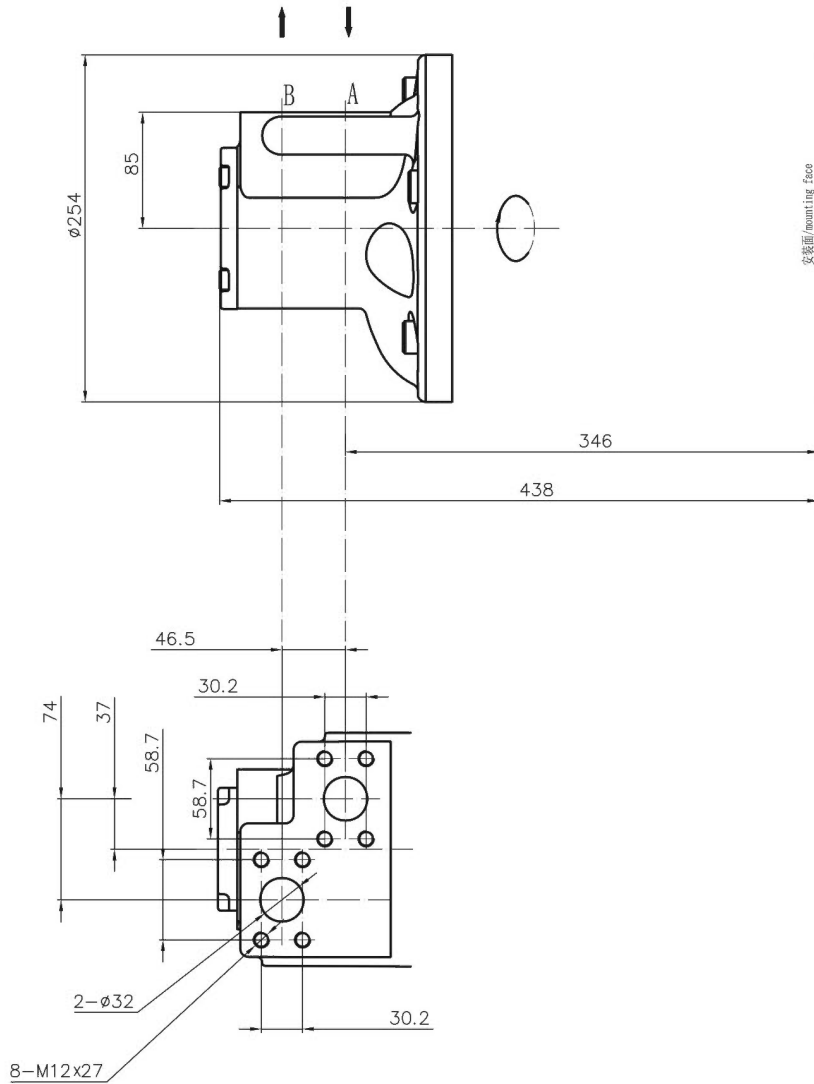
HA6V

HA2F

H-HMC200系列/H-HMC200 Series

H-HMC200 外形及安装尺寸/ H-HMC200 Installation Dimensions

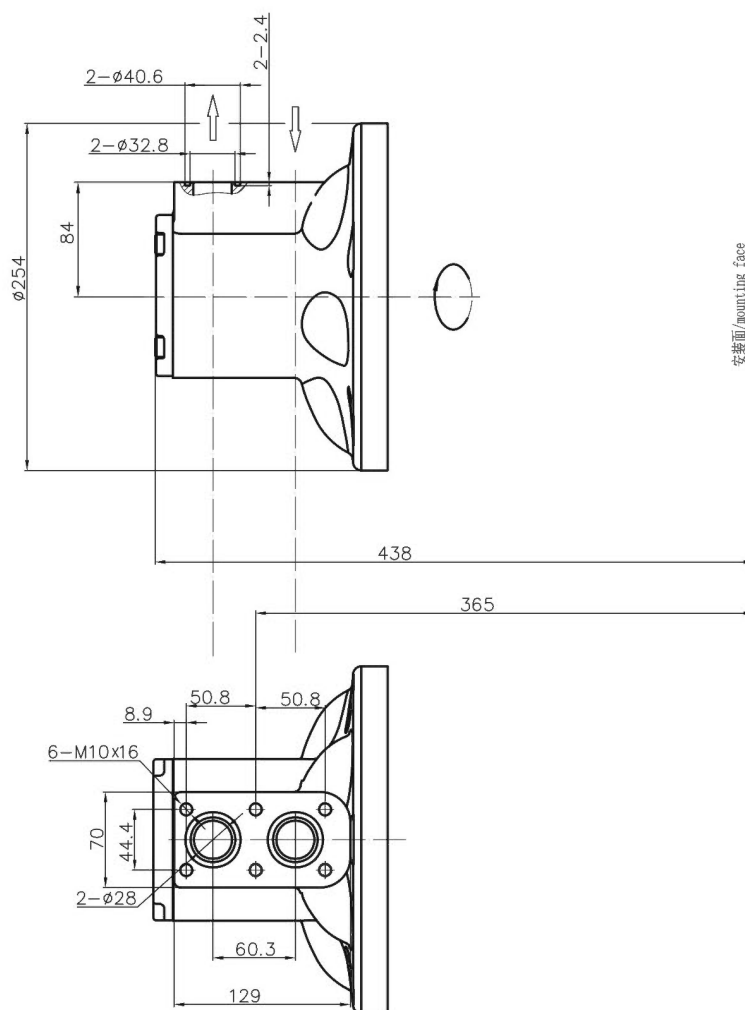
进出油口为F01的安装尺寸/ F01 Distributor



H-HMC200系列/H-HMC200 Series

H-HMC200 外形及安装尺寸/ H-HMC200 Installation Dimensions

进出油口为F01B的安装尺寸/ F01B Distributor



HFM

HGM

QJM

H-HMB

H-HMC

HCA

HCB

HMS

HA6V

HA2F

H-HMC270系列/H-HMC270 Series

技术参数 / Technical Specification

名义排量 Nominal Displacement 编码标识 Ordering Code 3 4	ml/r	4600	4100	3600	3300	3000	2600	2300	1900	1600	1400	970	680	500	340	170
排量 Displacement	ml/r	4597	4086	3632	3291	2951	2610	2270	1930	1646	1362	965	681	500	340	170/0
单位扭矩 Unit Torque	N.m/MPa	657	585	514	460	419	356	310	259	210	168	108	73	47	24	0
最高转速 Max. Speed	r/min	108	120	135	145	165	180	215	240	290	315	315	315	315	315	900
额定功率 Rated Power	KW	123	115	104	97	90	83	76	68	59	48	37	25	18	8	0
最大功率 Max. Power	KW	153	149	142	136	129	122	112	102	91	81	68	47	32	12	0
额定压力 Rated Pressure	MPa	23	23	23	23	23	23	23	23	23	23	23	23	23	23	1.5
最高压力 Max. Pressure	MPa	27.5	27.5	27.5	27.5	27.5	27.5	27.5	27.5	27.5	27.5	27.5	27.5	27.5	27.5	1.5

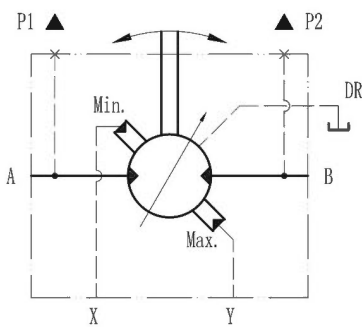
* H-HMC270排量的选择范围/ H-HMC270 displacement options

大排量为 / Large Displacement: 4600, 4100, 3600, 3300

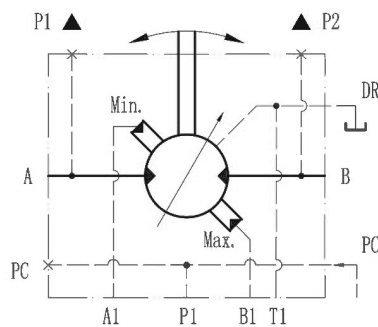
小排量为 / Small Displacement: 3300, 3000, 2600, 2300, 1900, 1600, 1400, 970, 680, 500, 340, 170, 0

控制原理图 / Control Schematic(编码标识/Ordering Code 8):

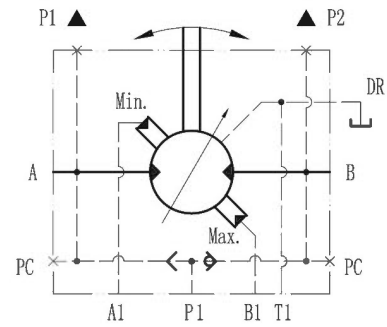
-A- 外控型
Control by external



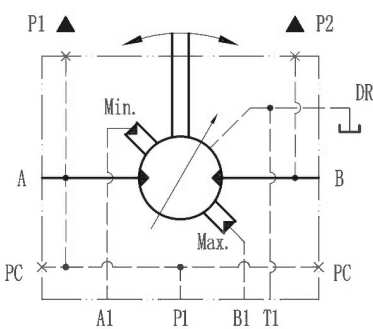
-B- PC外控型
Control by port pc



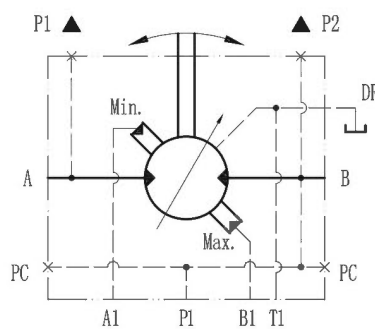
-C- 双向内控型
Control by A or B



-D- A口内控型
Control by port A



-E- B口内控型
Control by port B



H-HMC325系列/H-HMC325 Series

技术参数 / Technical Specification

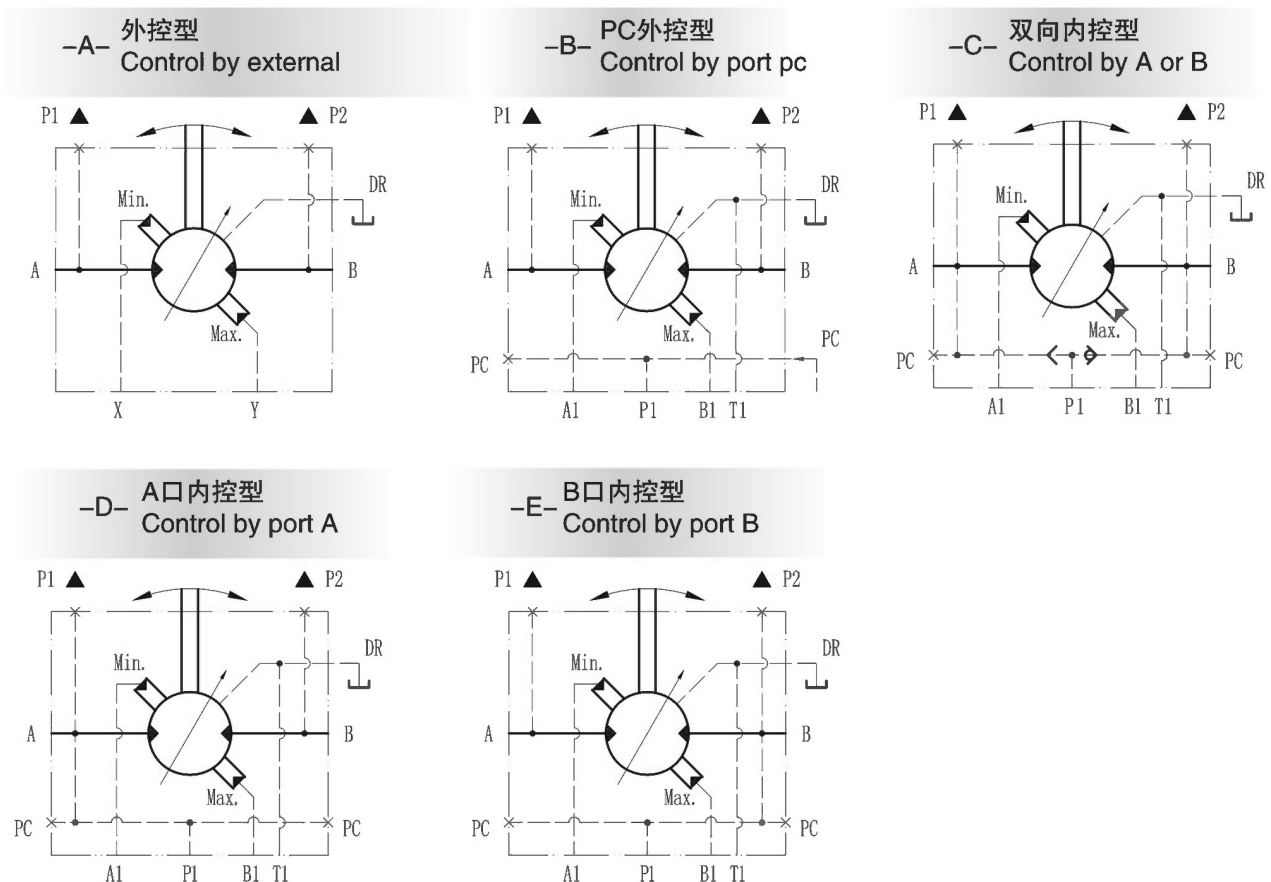
名义排量 Nominal Displacement 编码标识 Ordering Code 3 4	ml/r	5300	5100	4900	4600	4100	3600	3300	3000	2600	2300	1900	1600	1500	1400	970	680	500	340	170
排量 Displacement	ml/r	5335	5108	4937	4597	4086	3632	3291	2951	2610	2270	1930	1646	1532	1362	965	681	500	340	170/0
单位扭矩 Unit Torque	N.m/Mpa	763	731	706	706	657	514	460	419	356	310	259	210	196	168	108	73	47	24	0
最高转速 Max. Speed	r/min	90	105	110	110	108	135	145	165	180	215	240	290	315	315	315	315	315	315	900
额定功率 Rated Power	KW	123	123	123	123	123	104	97	90	83	76	68	59	54	48	37	25	18	8	0
最大功率 Max. Power	KW	153	153	153	153	153	142	136	129	122	112	102	91	87	81	68	47	32	12	0
额定压力 Rated Pressure	MPa	23	23	23	23	23	23	23	23	23	23	23	23	23	1.5	23	23	23	23	1.5
最高压力 Max. Pressure	MPa	27.5	27.5	27.5	27.5	27.5	27.5	27.5	27.5	27.5	27.5	27.5	27.5	27.5	27.5	27.5	27.5	27.5	27.5	1.5

* H-HMC325排量的选择范围/ H-HMC325 displacement options

大排量为 / Large Displacement: 5300, 5100, 4900, 4600, 4100;

小排量为 / Small Displacement: 3600, 3300, 3000, 2600, 2300, 1900, 1600, 1500, 1400, 970, 680, 500, 340, 170, 0

控制原理图 / Control Schematic(编码标识/Ordering Code 8):



HFM

HGM

QJM

H-HMB

H-HMC

HCA

HCB

HMS

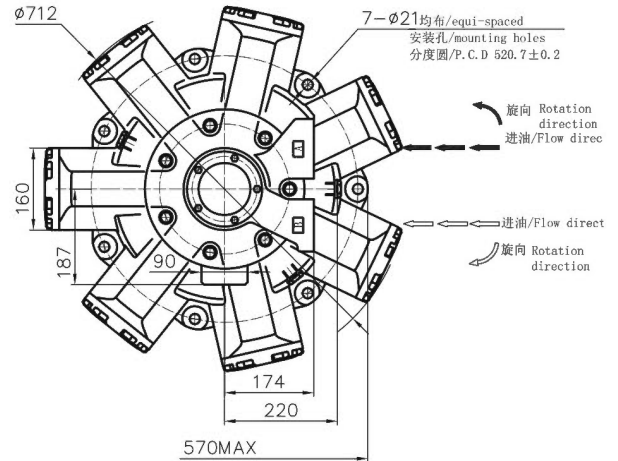
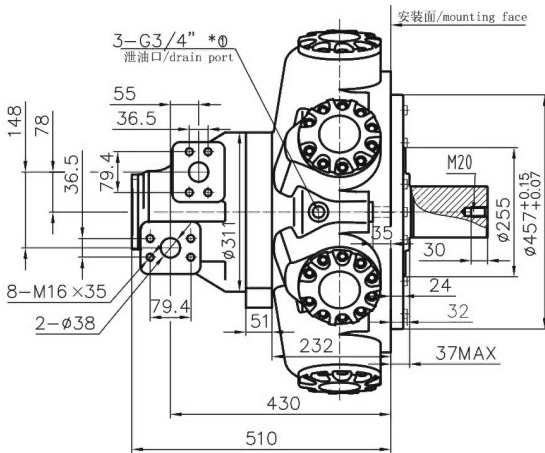
HA6V

HA2F

H-HMC270/325系列/H-HMC270/325 Series

H-HMC270 外形及安装尺寸/ H-HMC270 Installation Dimensions

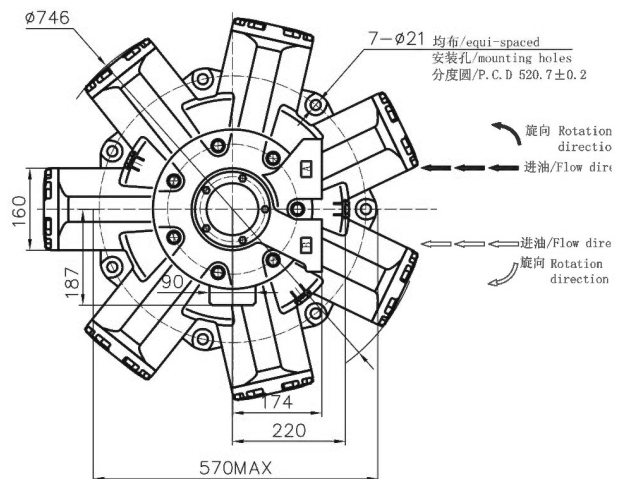
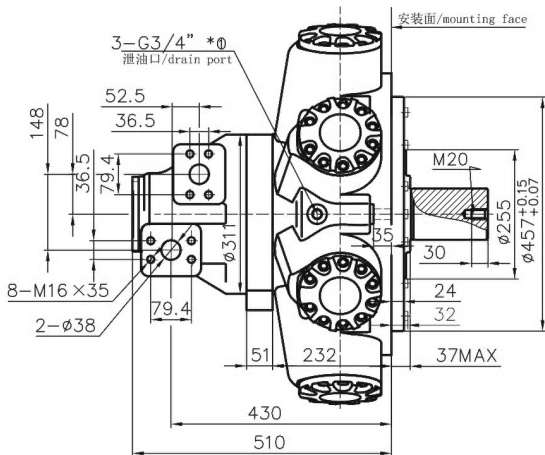
进出油口为F03的安装尺寸/With F03 Distributor



*①可选配UNF3/4"-16接头/Option: UNF3/4"-16

H-HMC325 外形及安装尺寸/ H-HMC325 Installation Dimensions

进出油口为F03的安装尺寸/With F03 Distributor

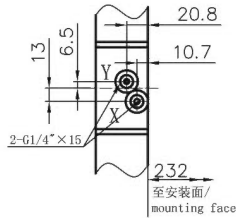


*①可选配UNF3/4"-16接头/Option: UNF3/4"-16

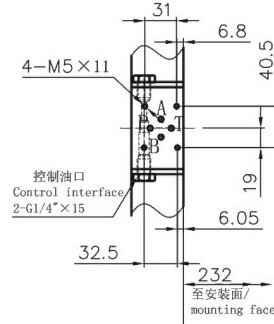
H-HMC270/325系列/H-HMC270/325 Series

变量控制方式的安装尺寸/ Variable Control Dimensions (编码标识/Ordering code 8)

A的安装尺寸/Dimensions

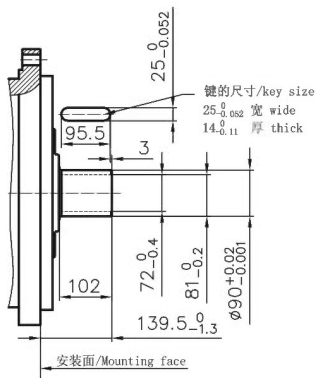


B&C&D的安装尺寸/Dimensions

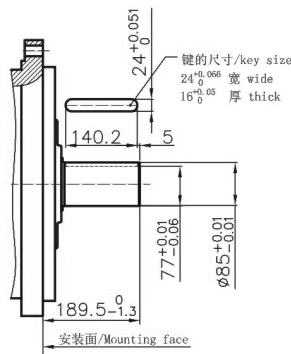


H-HMC270&H-HMC325 输出轴的安装尺寸/ Shaft Options (编码标识/Ordering code 5)

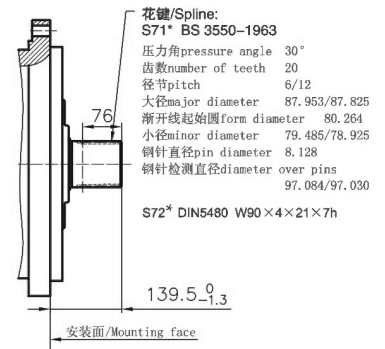
H-HMC270/H-HMC325-P71



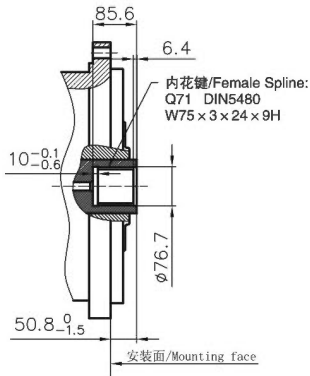
H-HMC270/H-HMC325-P73



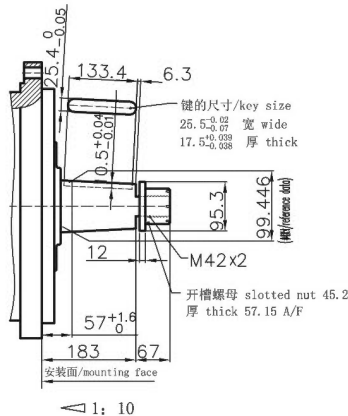
H-HMC270/H-HMC325-S71*&S72*



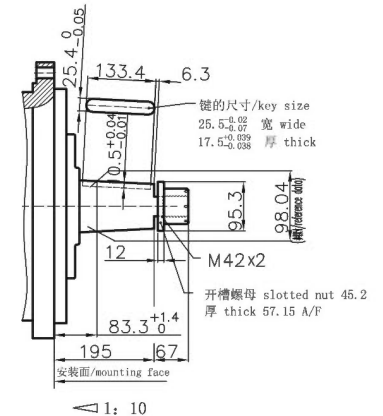
H-HMC270/H-HMC325-Q71



H-HMC270/H-HMC325-T71



H-HMC270/H-HMC325-T72



注释: S71*/S72* 为标准花键轴
Notes: S71*/S72*=Standard Spline Shaft

HFM

HGM

QJM

H-HMB

H-HMC

HCA

HCB

HMS

HA6V

HA2F

H-HMC270/325系列/H-HMC270/325 Series

H-HMC270/325 外形及安装尺寸/ H-HMC270/325 Installation Dimensions

进出口为F03B的安装尺寸/ F03B Distributor

