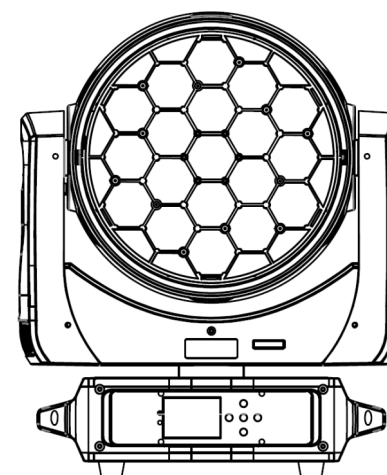


FE1940 FLYEYE 1940FP



ADD F1-5, Block 3, No.95, Guangzhu Rd, Lanhe Town, Nansha District,
Guangzhou 511480

Tel. +86 20 8499 2310/2320/2330

Fax +86 20 8499 2360

E-mail info@color-imagination.com

Website www.color-imagination.com

**Follow
us on**



www.facebook.com/colorimagination.1



www.youtube.com/user/colorimaginationj



https://twitter.com/Color_lighting

CE F  IP20 t_a 40°C t_c 150°C

User Manual

KEEP THIS MANUAL FOR FUTURE NEEDS

1 SAFETY INSTRUCTIONS



CAUTION

Becareful with your operations. With a dangerous voltage you can suffer a dangerous electric shock when touching wires!

This device has left the factory in perfect condition. In order to maintain this condition and to ensure a safe operation, it is absolutely necessary for the user to follow the safety instructions and warning notes written in this user manual.



IMPORTANT

Damages caused by the disregard of this user manual are not subject to warranty. The dealer will not accept liability for any resulting defects or problems.

If the device has been exposed to temperature changes due to environmental changes, do not switch it on immediately. The arising condensation could damage the device. Leave the device switched off until it has reached room temperature.

This device falls under protection-class I. Therefore it is essential that the device be earthed.

The electric connection must carry out by qualified person.

The device shall only be used with rated voltage and frequency.

Make sure that the available voltage is not higher than stated at the end of this manual.

Make sure the power cord is never crimped or damaged by sharp edges. If this would be the case, replacement of the cable must be done by an authorized dealer.

Always disconnect from the mains, when the device is not in use or before cleaning it. Only handle the power cord by the plug. Never pull out the plug by tugging the power cord.

During initial start-up some smoke or smell may arise. This is a normal process and does not necessarily mean that the device is defective, it should decrease gradually.

Please don't project the beam onto combustible substances.

Fixtures cannot be installed on combustible substances, keep more than 50cm distance with wall for smooth air flow, so there should be no shelter for fans and ventilation for heat radiation.

If the external flexible cable or cord of this luminaire is damaged, it shall be exclusively replaced by the manufacturer or his service agent or a similar qualified person in order to avoid a hazard.

10 MAINTENANCE AND CLEANING

The following points have to be considered during the inspection:

- 1) All screws for installing the devices or parts of the device have to be tightly connected and must not be corroded.
- 2) There must not be any deformations on the housing, color lenses, fixations and installation spots (ceiling, suspension, trussing).
- 3) Mechanically moved parts must not show any traces of wearing and must not rotate with unbalances.
- 4) The electric power supply cables must not show any damage, material fatigue or sediments.

Further instructions depending on the installation spot and usage have to be adhered to by a skilled installer and any safety problems have to be removed.



CAUTION

Disconnect from mains before starting maintenance operation.



In order to make the lights in good condition and extend the life time, we suggest a regular cleaning to the lights.

- 1) Clean the inside and outside lens each week to avoid the weakness of the lights due to accumulation of dust.
- 2) Clean the fan each week.
- 3) A detailed electric check by approved electrical engineer each three months, make sure that the circuit contacts are in good condition, prevent the poor contact of circuit from overheating.

We recommend a frequent cleaning of the device. Please use a moist, lint-free cloth. Never use alcohol or solvents.

There are no serviceable parts inside the device. Please refer to the instructions under "Installation instructions".

Should you need any spare parts, please order genuine parts from your local dealer.

78Channels mode

| CH | Function | DMX | Details |
|-------|-----------------|---------|--|
| 1 | Red | 0-255 | Red dimmer |
| 2 | Red Fine | 0-255 | Red fine control |
| 3 | Green | 0-255 | Green dimmer |
| 4 | Green Fine | 0-255 | Green fine control |
| 5 | Blue | 0-255 | Blue dimmer |
| 6 | Blue Fine | 0-255 | Blue fine control |
| 7 | White | 0-255 | White dimmer |
| 8 | White Fine | 0-255 | White fine control |
| 9 | CTO | 0-255 | Color temperature linear control |
| 10 | Macro Color | 0-255 | Marco color |
| 11 | strobe | 0-3 | No function, Light off |
| | | 4-103 | Strobe with the same step from slow to fast |
| | | 104-107 | No function, light up |
| | | 108-207 | Pulse strobe from slow to fast |
| | | 208-212 | No function, light up |
| | | 213-251 | Random strobe from slow to fast |
| | | 252-255 | No function, light up |
| 12 | Dimmer | 0-255 | 0-100 linear dimmer from dark to bright |
| 13 | Dimmer Fine | 0-255 | Dimmer fine control |
| 14 | Pan | 0-255 | Pan movement control |
| 15 | Pan Fine | 0-255 | Pan fine control |
| 16 | Tilt | 0-255 | Tilt movement control |
| 17 | Tilt Fine | 0-255 | Pan fine control |
| 18 | Function | 0-255 | Revered channel, no function at this moment |
| 19 | Reset | 0-250 | No function |
| | | 251-255 | Reset with 5 seconds |
| 20 | Zoom | 0-255 | Zoom |
| 21 | Zoom Rotation | 0-127 | 0 to 60 degree |
| | | 128-191 | Unlimited clockwise rotation from fast to slow |
| | | 192-255 | Unlimited anticlockwise rotation from fast to slow |
| 22 | Red dimmer 1 | 0-255 | LED 1 red dimmer |
| 23 | Green dimmer 1 | 0-255 | LED 1 green dimmer |
| 24 | Blue dimmer 1 | 0-255 | LED 1 blue dimmer |
| 25 | Red dimmer 2 | 0-255 | LED 2 red dimmer |
| 26 | Green dimmer 2 | 0-255 | LED 2 green dimmer |
| 27 | Blue dimmer 2 | 0-255 | LED 2 blue dimmer |
| | | | |
| ... | | | |
| 76 | Red dimmer 19 | 0-255 | LED 19 red dimmer |
| 77 | Green dimmer 19 | 0-255 | LED 19 green dimmer |
| 78 | Blue dimmer 19 | 0-255 | LED 19 blue dimmer |

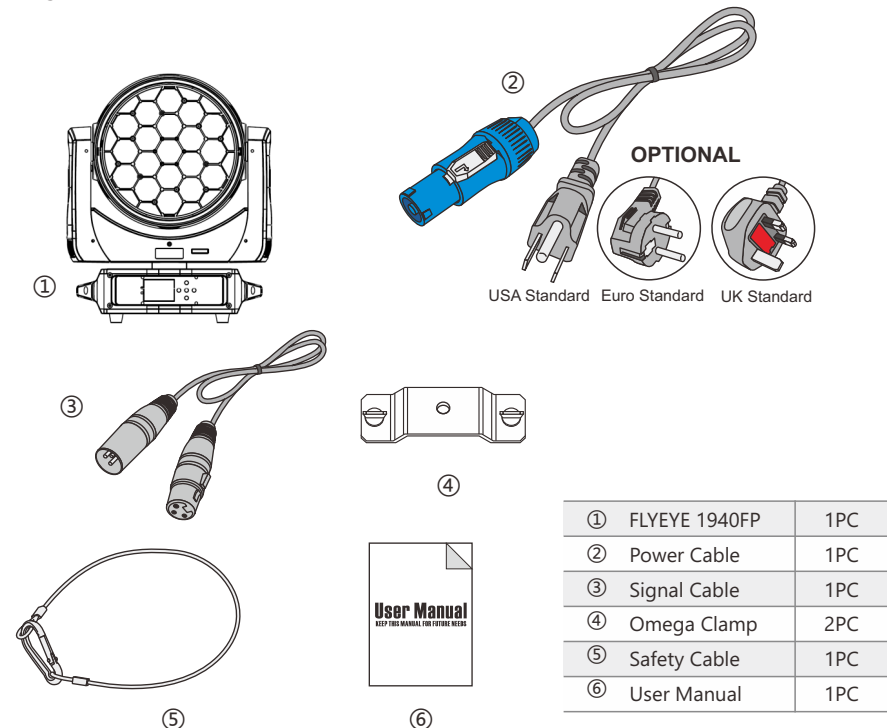
2 UNPACKING

The FLYEYE 1940FP is a breathtaking and imaginative stage performer that provides completely high performance wash effect, beam effect and visual effects. It features 19x40W 4-in-1 RGBW LEDs integrated in specially designed optical lens with awesome lumen ratio in the front. The lens system is capable of rotating possibility to create multi petal-like micro fine rays that are programmable for individual colors, as each LED and each color is controllable independently. The micro rays could be opened and closed to produce dynamic graphic lighting effects.

The ZOOM system ranges from 6° to 60°with smooth and quiet working. The fixture will bring brilliant dazzling hard BEAM effect when it zooms to 6°. And it will bring pure and even wash coverage effect when it zooms to 60°.

The MAX EYE provides 4 DMX modes that fulfill the needs of different professional lighting designers. It's with fast, quiet and precise PAN/TILT movement, and low noise cooling system though it's a high power light.

It's available for high power need live concerts, TV studios, theaters, DJ shows, clubs, weddings, etc.



3 FEATURES & SPECIFICATIONS

Features

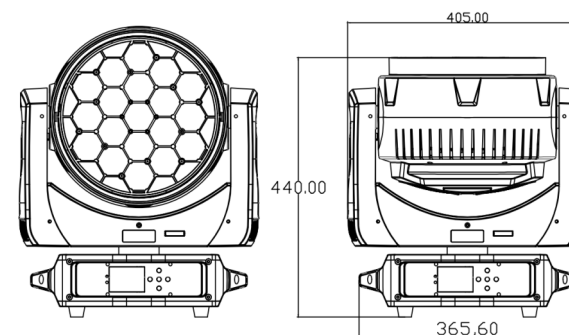
40W RGBW 4-in-1 LEDs
 Flicker free operation for broadcast TV and FILM
 Life Span: 50000H
 19PCS high efficiency acrylic lens
 Optimized light pipe for higher LED efficiency
 6°-60°Smooth and quiet linear motorized zoom with fine control
 360°Continuous front lends rotation with variable speed
 PAN movement: 540° (8/16 bit)
 PAN movement: 250° (8/16 bit)
 Fast, quiet, smooth and precise 3-Phase motors
 Smooth, fast and precise resolution for PAN/TILT movement with low noise operation
 Scan position memory, auto reposition after unexpected movement
 PAN/TILT reversible
 19PCS high efficiency acrylic lens
 Pixel mapping capability with each LED
 Sophisticated 4 colors RGBW mixed
 Even and soft light coverage with pure mixing
 Linear color temperature adjustment
 Preset color macros
 Different static shape selections
 Different dynamic shape selections with variable speed
 Shape fading effectShape color options with 0-100% dimming
 Background colors options with 0-100% dimming
 Ringlike LED pixel strip for magic visual effects
 1-25T/sec high speed shutter/strobe effect with variable speed
 Random strobe effect with variable speed
 Preset pulse strobe effect
 Differenct foreground/background strobe effect
 0-100% Smooth linear LED dimming
 Fine dimming control
 22/26/36/78 DMX channels USITT DMX-512
 DMX512, master-slave, sound activated or auto operation
 Sound control sensitivity adjustable
 Multi preset internal programs
 DMX recorder and edit function integrated
 Shielded input signal protection for stable signal without interference
 3-Pin XLR connectors IN/OUT
 Electronic power supply
 AC90-240V 50/60Hz
 PowerCON IN/OUT with swtich and fuse
 760W Power consumption
 Operating positions: all (device on floor or fixed to a support)
 -25 to 45 ambient temperature
 IP20 protection rating
 N.W.: 15.2kg
 G.W.: 18.7kg
 Product Dimensions: 231(D)*405 (W)*440(H)mm
 Packing Dimensions: 390(D)*620(W)*510(H)mm

36 Channels mode

| CH | Function | DMX | Details |
|----|----------------------|---------|--|
| 1 | Red | 0-255 | Red dimmer |
| 2 | Red Fine | 0-255 | Red fine control |
| 3 | Green | 0-255 | Green dimmer |
| 4 | Green Fine | 0-255 | Green fine control |
| 5 | Blue | 0-255 | Blue dimmer |
| 6 | Blue Fine | 0-255 | Blue fine control |
| 7 | White | 0-255 | White dimmer |
| 8 | White Fine | 0-255 | White fine control |
| 9 | CTO | 0-255 | Color temperature linear control |
| 10 | Macro color | 0-255 | Marco color effect |
| 11 | strobe | 0-3 | No function, Light off |
| | | 4-103 | Strobe with the same step from slow to fast |
| | | 104-107 | No function, light up |
| | | 108-207 | Pulse strobe from slow to fast |
| | | 208-212 | No function, light up |
| | | 213-251 | Random strobe from slow to fast |
| | | 252-255 | No function, light up |
| 12 | Dimmer | 0-255 | 0-100 linear dimmer from dark to bright |
| 13 | Dimmer Fine | 0-255 | Dimmer fine control |
| 14 | Pan | 0-255 | Pan movement control |
| 15 | Pan Fine | 0-255 | Pan fine control |
| 16 | Tilt | 0-255 | Tilt movement control |
| 17 | Tilt Fine | 0-255 | Pan fine control |
| 18 | Function | 0-255 | |
| 19 | Reset | 0-250 | No function |
| | | 251-255 | Reset with 5 seconds |
| 20 | Zoom | 0-255 | ZOOM |
| 21 | LENS Rotation | 0-127 | 0 to 60 degree |
| | | 128-191 | Unlimited clockwise rotation from fast to slow |
| | | 192-255 | Unlimited anticlockwise rotation from fast to slow |
| 22 | Shape Selection | 0-255 | Selecting shape(0-70 workable) |
| 23 | Shape Speed | 0-255 | Shape speed control |
| 24 | Shape Fade | 0-255 | Shape fade |
| 25 | Shape R | 0-255 | Shape in Red color |
| 26 | Shape G | 0-255 | Shape in Green color |
| 27 | Shape B | 0-255 | Shape in Blue color |
| 28 | Shape W | 0-255 | Shape in White color |
| 29 | Shape Dimmer | 0-255 | Shape dimmer 0-100% |
| 30 | Background Dimmer | 0-255 | Background dimmer 0-100% |
| 31 | Shape Transition | 0-255 | Shape change |
| 32 | Shape Offset | 0-255 | Shape offset |
| 33 | Foreground strobe | 0-255 | Foreground strobe control |
| 34 | Background strobe | 0-255 | Background strobe control |
| 35 | Background selection | 0-255 | Background selection |
| 36 | Frequency | 0-255 | Shape and frequency selectables |

26 channels mode

| CH | Function | DMX | Details |
|----|----------------------|---------|---|
| 1 | Pan | 0-255 | Pan movement control |
| 2 | Pan fine | 0-255 | Pan fine control |
| 3 | Tilt | 0-255 | Tilt movement control |
| 4 | Tilt fine | 0-255 | Pan fine control |
| 5 | Pan/Tilt speed | 0-255 | Speed from fast to slow |
| 6 | ZOOM | 0-255 | Zoom |
| 7 | LENS rotation | 0-127 | 0 to 60 degree |
| | | 128-191 | Unlimited clockwise rotation from fast to slow |
| | | 192-255 | Unlimited anticlockwise rotation from fast to slow |
| 8 | Dimmer | 0-255 | 0-100 linear dimmer from dark to bright |
| 9 | Strobe | 0-3 | No function, Light off |
| | | 4-200 | Strobe with the same step from slow to fast |
| | | 201-255 | Random strobe from slow to fast |
| 10 | R | 0-255 | 1-100% Red linear dimmer from dark to bright |
| 11 | G | 0-255 | 1-100% Green linear dimmer from dark to bright |
| 12 | B | 0-255 | 1-100% Blue linear dimmer from dark to bright |
| 13 | W | 0-255 | 1-100% White linear dimmer from dark to bright |
| 14 | Color temperature | 0-255 | Linear color temperature control |
| 15 | Marco Color | 0-255 | Marco color change |
| 16 | Static effect | 0-9 | No function |
| | | 10-84 | Each 5 DMX value is a kind of static effect(15 kinds) |
| | | 85-255 | 16 th kind of effect |
| 17 | Dynamic effect | 0-9 | No function |
| | | 10-199 | Each 5 DMX value is a kind of dynamic effect(38 kinds) |
| | | 200-255 | 39 th kind of effect |
| 18 | Dynamic effect speed | 0-127 | Anti-clockwise rotate from fast to slow, operate against 17 CH |
| | | 128-255 | Clockwise rotate from slow to fast, operate against 17 CH |
| 19 | Background R | 0-255 | Background color Red dimmer |
| 20 | Background G | 0-255 | Background color Green dimmer |
| 21 | Background B | 0-255 | Background color Blue dimmer |
| 22 | Background W | 0-255 | Background color White dimmer |
| 23 | LED ring strobe | 0-3 | No function, Light off |
| | | 4-250 | LED ring strobe |
| | | 251-255 | No function, Light on |
| 24 | LED ring macro | 0-51 | Macro color |
| | | 52-255 | Dynamic effect, every 4 DMX channel is one kind of effect, totally 51 kinds |
| 25 | Macro speed | 0-255 | LED ring macro effect from slow to fast |
| 26 | Reset | 0-239 | No function |
| | | 240-255 | Reset with 5 seconds |

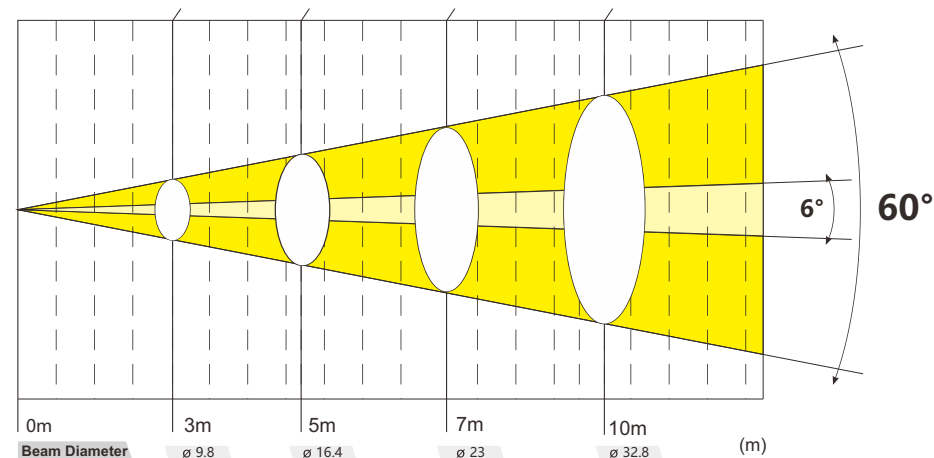


4 PHOTOMETRIC DATA

Photometric Beam Angle Data

Beam Angle: 60° Beam Angle LUX × 0.0929 = FC

| | | | | | |
|-------------|-------|-------|-------|------|-------------|
| R | 8920 | 4300 | 2200 | 930 | <6°> |
| | 520 | 210 | 105 | 70 | <60°> |
| G | 27300 | 9800 | 5700 | 2650 | <6°> |
| | 1330 | 650 | 320 | 173 | <60°> |
| B | 920 | 385 | 185 | 100 | <6°> |
| | 55 | 23 | 12 | 10 | <60°> |
| W | 28500 | 10500 | 6000 | 2800 | <6°> |
| | 1300 | 630 | 310 | 170 | <60°> |
| RGBW | 60000 | 24600 | 11500 | 6200 | <6°> |
| | 3050 | 1200 | 680 | 400 | <60°> (LUX) |



5 INSTALLATIONS

Cautions: For added protection mount the fixtures in areas outside walking paths, seating areas, or in areas where the fixture might be reached by unauthorized personnel.

Before mounting the fixture to any surface, make sure that the installation area can hold a minimum point load of 10 times the device's weight.

Fixture installation must always be secured with a secondary safety attachment, such as an appropriate safety cable.

Never stand directly below the device when mounting, removing, or servicing the fixture.

from a ceiling, or set on a flat level surface (see illustration below). Be sure this fixture is kept at least 0.5m (1.5 ft) away from any flammable materials (decoration etc.).

Always use and install the supplied safety cable as a safety measure to prevent accidental damage and/or injury in the event the clamp fails.

Mounting points: Overhead mounting requires extensive experience, including amongst others calculating working load limits, a fine knowledge of the installation material being used, and periodic safety inspection of all installation material and the fixture. If you lack these qualifications, do not attempt the installation yourself. Improper installation can result in bodily injury.

Be sure to complete all rigging and installation procedures before connecting the main power cord to the appropriate wall outlet.

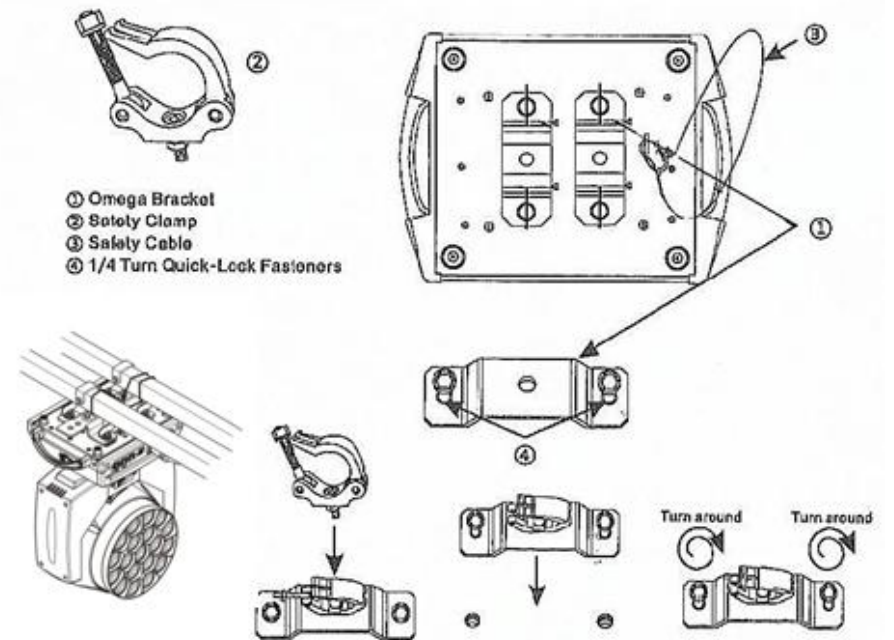
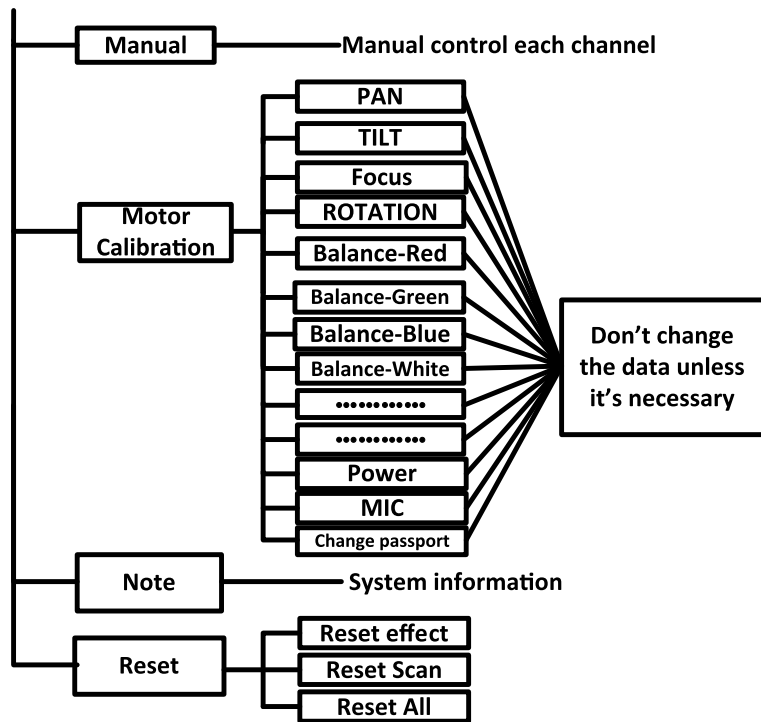
Clamp Mounting: The FLYEYE 1940FP provides two unique mounting bracket assembly that integrates the bottom of the base, the included "Omega Bracket," and the safety cable rigging point in one unit (see the illustration below). When mounting this fixture to truss be sure to secure an appropriately rated clamp to the included omega bracket using a M10 screw fitted through the center hole of the "omega bracket". As an added safety measure be sure to attached at least one properly rated safety cable to the fixture using one of the safety cable rigging point integrated in the base assembly.

Regardless of the rigging option you choose for your FLYEYE 1940FP, always be sure to secure your fixture with a safety cable. The fixture provides a built-in rigging point for a safety cable on the hanging bracket as illustrated above. Be sure to only use the designated rigging point for the safety cable and never secure a safety cable to a carrying handle.

9 DMX CHANNELS

22 channels mode

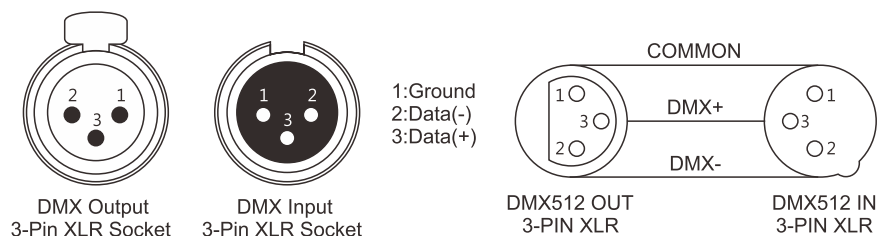
| CH | Function | DMX Value | Details |
|----|----------------------|-----------|---|
| 1 | Pan | 0-255 | Pan movement control |
| 2 | Pan fine | 0-255 | Pan fine control |
| 3 | Tilt | 0-255 | Tilt movement control |
| 4 | Tilt fine | 0-255 | Pan fine control |
| 5 | Pan/Tilt speed | 0-255 | Speed from fast to slow |
| 6 | ZOOM | 0-255 | Zoom |
| 7 | LENS rotation | 0-127 | 0 to 60 degree |
| | | 128-191 | Unlimited clockwise rotation from fast to slow |
| | | 192-255 | Unlimited anticlockwise rotation from fast to slow |
| 8 | Dimmer | 0-255 | 0-100 linear dimmer from dark to bright |
| 9 | Strobe | 0-3 | No function, Light off |
| | | 4-200 | Strobe with the same step from slow to fast |
| | | 201-255 | Random strobe from slow to fast |
| 10 | R | 0-255 | 1-100% Red linear dimmer from dark to bright |
| 11 | G | 0-255 | 1-100% Green linear dimmer from dark to bright |
| 12 | B | 0-255 | 1-100% Blue linear dimmer from dark to bright |
| 13 | W | 0-255 | 1-100% White linear dimmer from dark to bright |
| 14 | Color temperature | 0-255 | Linear color temperature control |
| 15 | Marco | 0-255 | Marco color change |
| 16 | Static effect | 0-9 | No function |
| | | 10-84 | Each 5 DMX value is a kind of static effect(15 kinds) |
| | | 85-255 | 16 th kind of effect |
| 17 | Dynamic effect | 0-9 | No function |
| | | 10-199 | Each 5 DMX value is a kind of dynamic effect(38 kinds) |
| | | 200-255 | 39 th kind of effect |
| 18 | Dynamic effect speed | 0-127 | Anti-clockwise rotate from fast to slow, operate against 17 CH |
| | | 128-255 | Clockwise rotate from slow to fast, operate against 17 CH |
| 19 | LED ring strobe | 0-3 | No function, Light off |
| | | 4-250 | LED ring strobe |
| | | 251-255 | No function, Light on |
| 20 | LED ring macro | 0-51 | Macro color |
| | | 52-255 | Dynamic effect, every 4 DMX channel is one kind of effect, totally 51 kinds |
| 21 | Macro speed | 0-255 | LED ring macro effect from slow to fast |
| 22 | Reset | 0-239 | No function |
| | | 240-255 | Reset with 5 seconds |



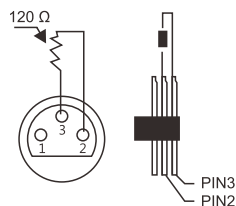
7 DMX-512 CONTROL CONNECTIONS

Connect the provided XLR cable to the female 3-pin XLR output of your controller and the other side to the male 3-pin XLR input of the moving head. You can chain multiple Moving head together through serial linking. The cable needed should be two core, screened cable with XLR input and output connectors. Please refer to the diagram below.

DMX-512 connection with DMX terminator



For installations where the DMX cable has to run a long distance or is in an electrically noisy environment, such as in a discotheque, it is recommended to use a DMX terminator. This helps in preventing corruption of the digital control signal by electrical noise. The DMX terminator is simply an XLR plug with a 120 Ω resistor connected between pins 2 and 3, which is then plugged into the output XLR socket of the last fixture in the chain. Please see illustrations below.



8 MENU OPERATIONS

