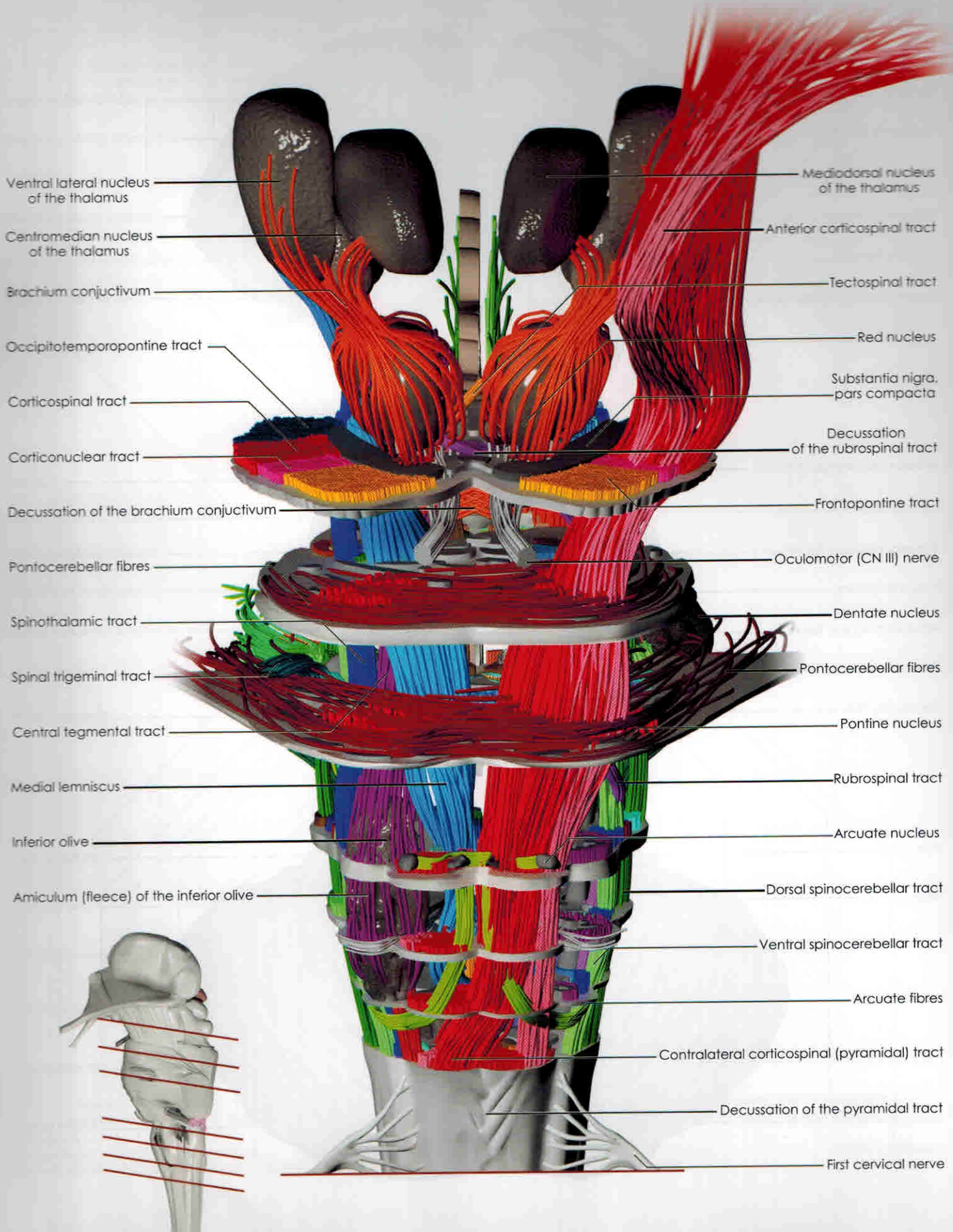


Sections of the Brainstem

Anterior View

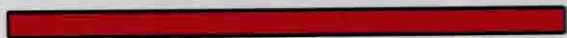


Sections of the Brainstem

Anterolateral View



motor system



sensory system



olfactory system



visual system



oculomotor system



gustatory system



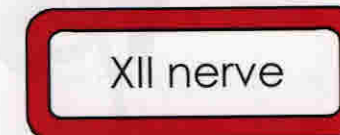
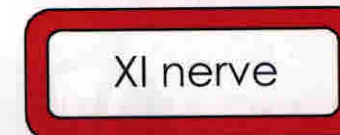
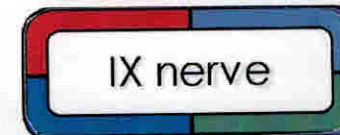
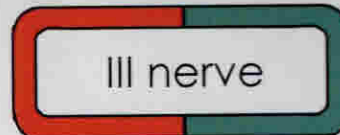
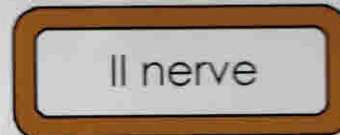
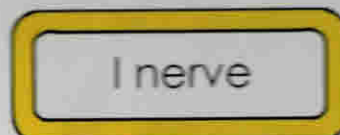
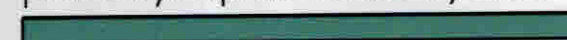
vestibular system



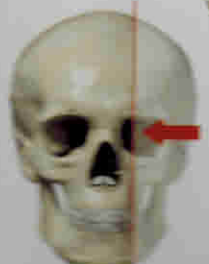
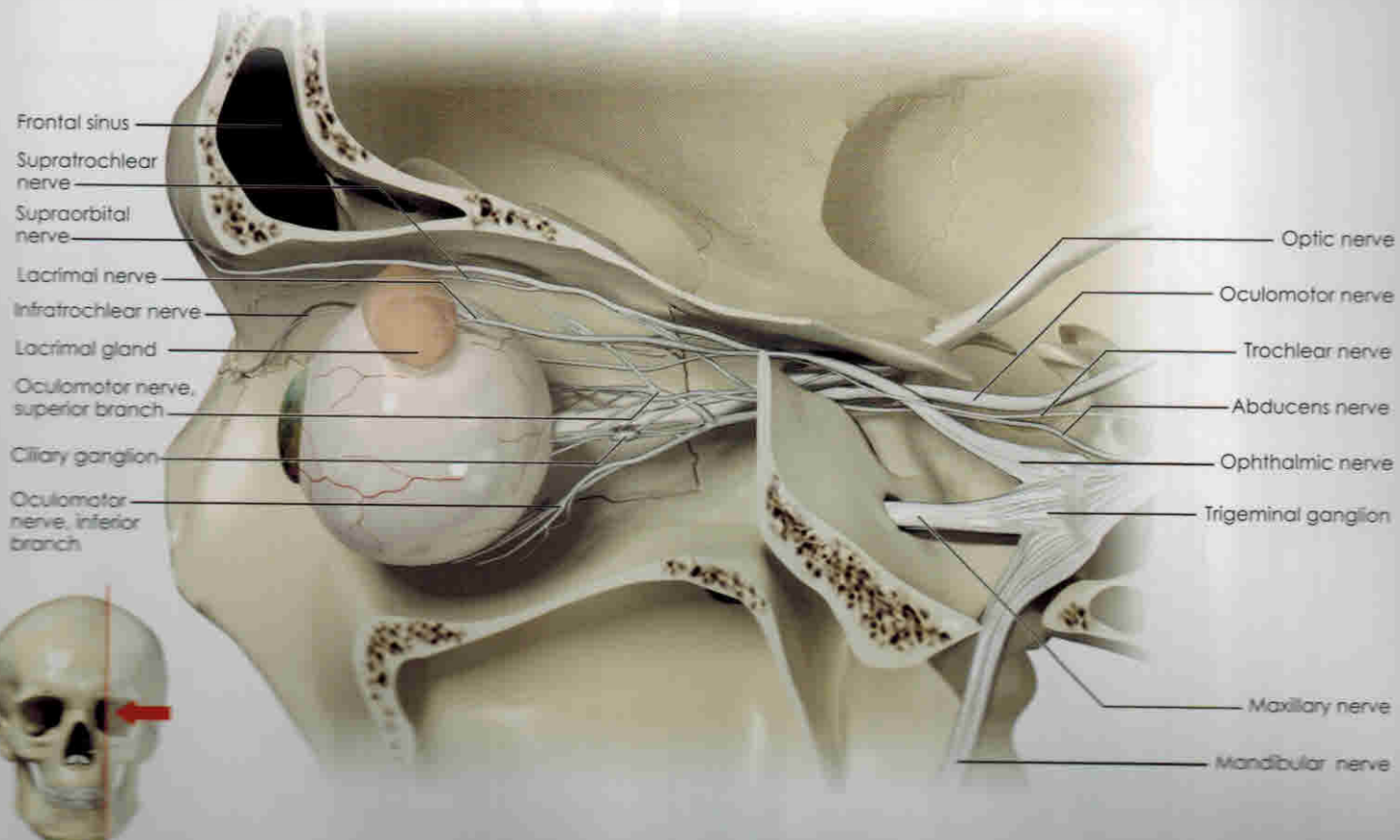
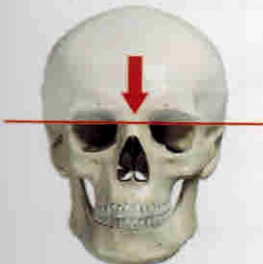
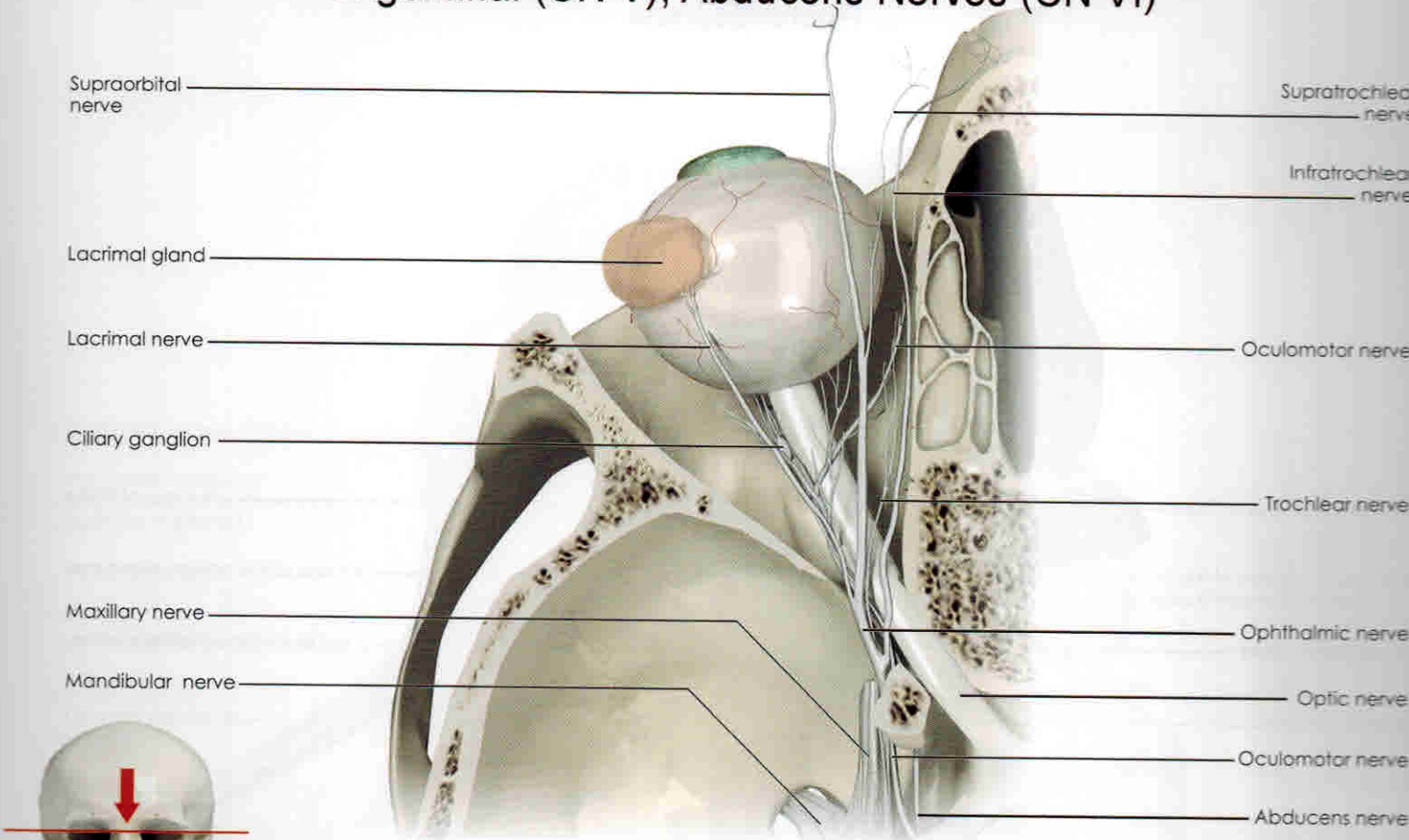
auditory system



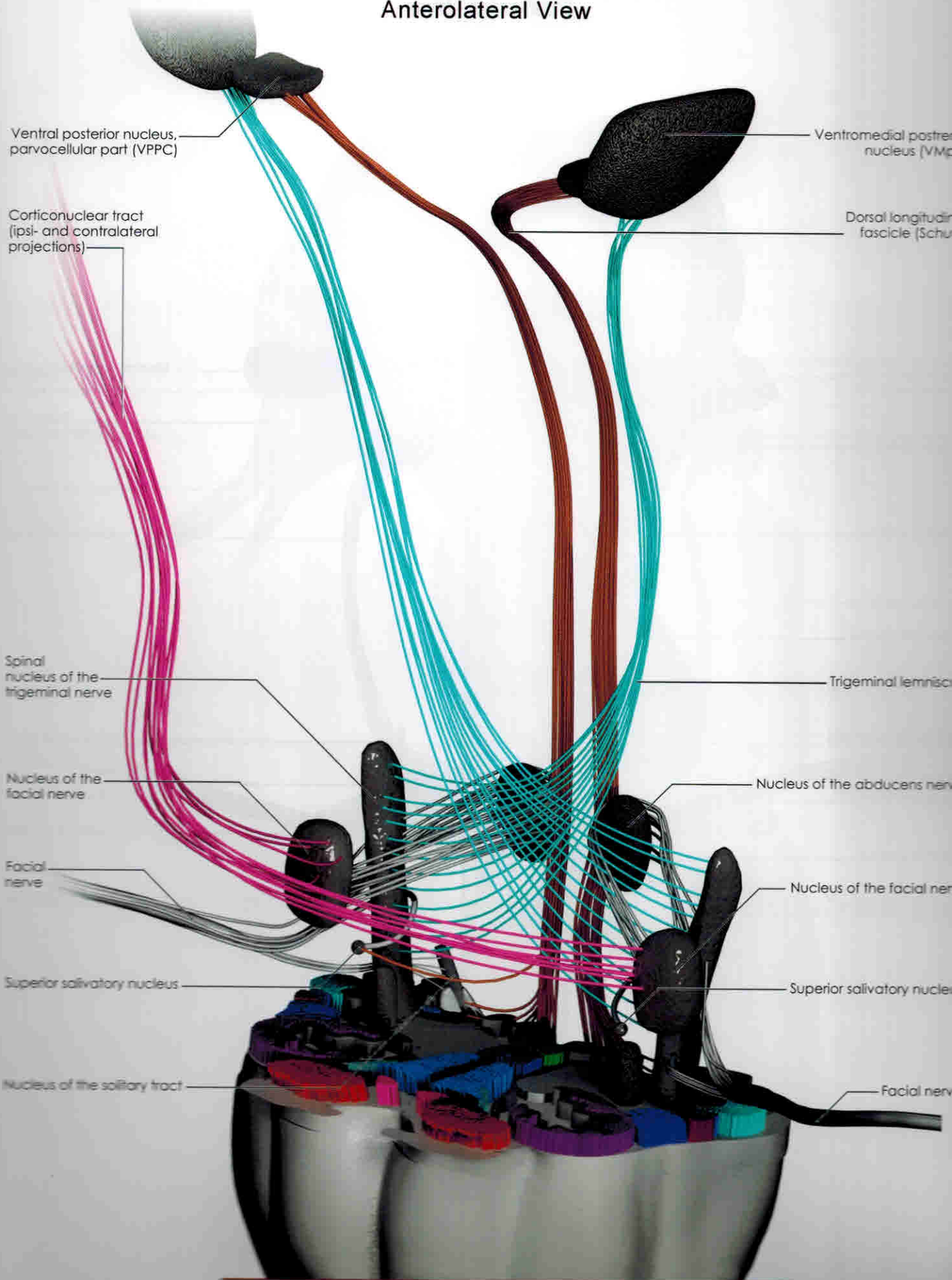
parasympathetic system



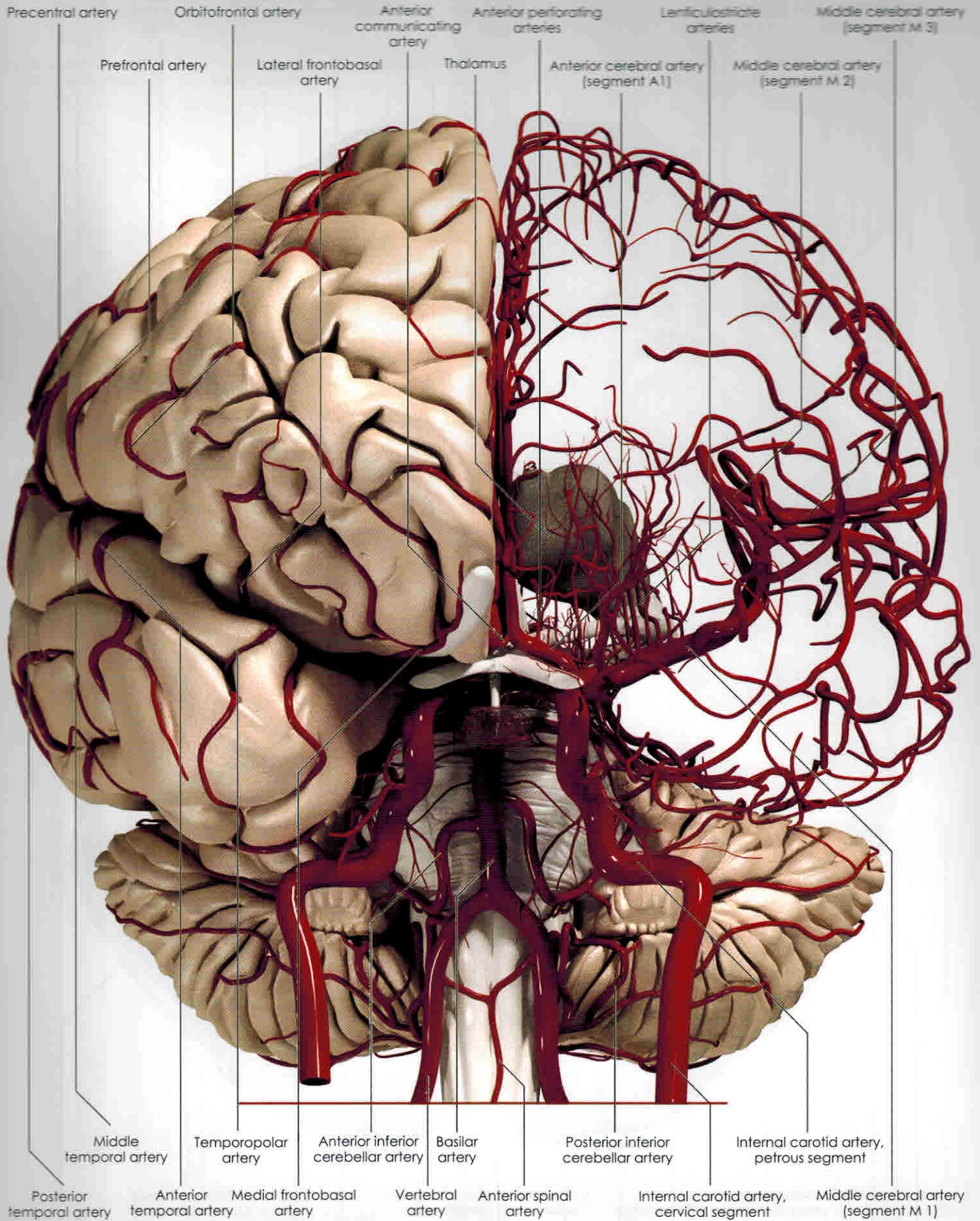
Oculomotor (CN III), Trochlear (CN IV), Trigeminal (CN V), Abducens Nerves (CN VI)



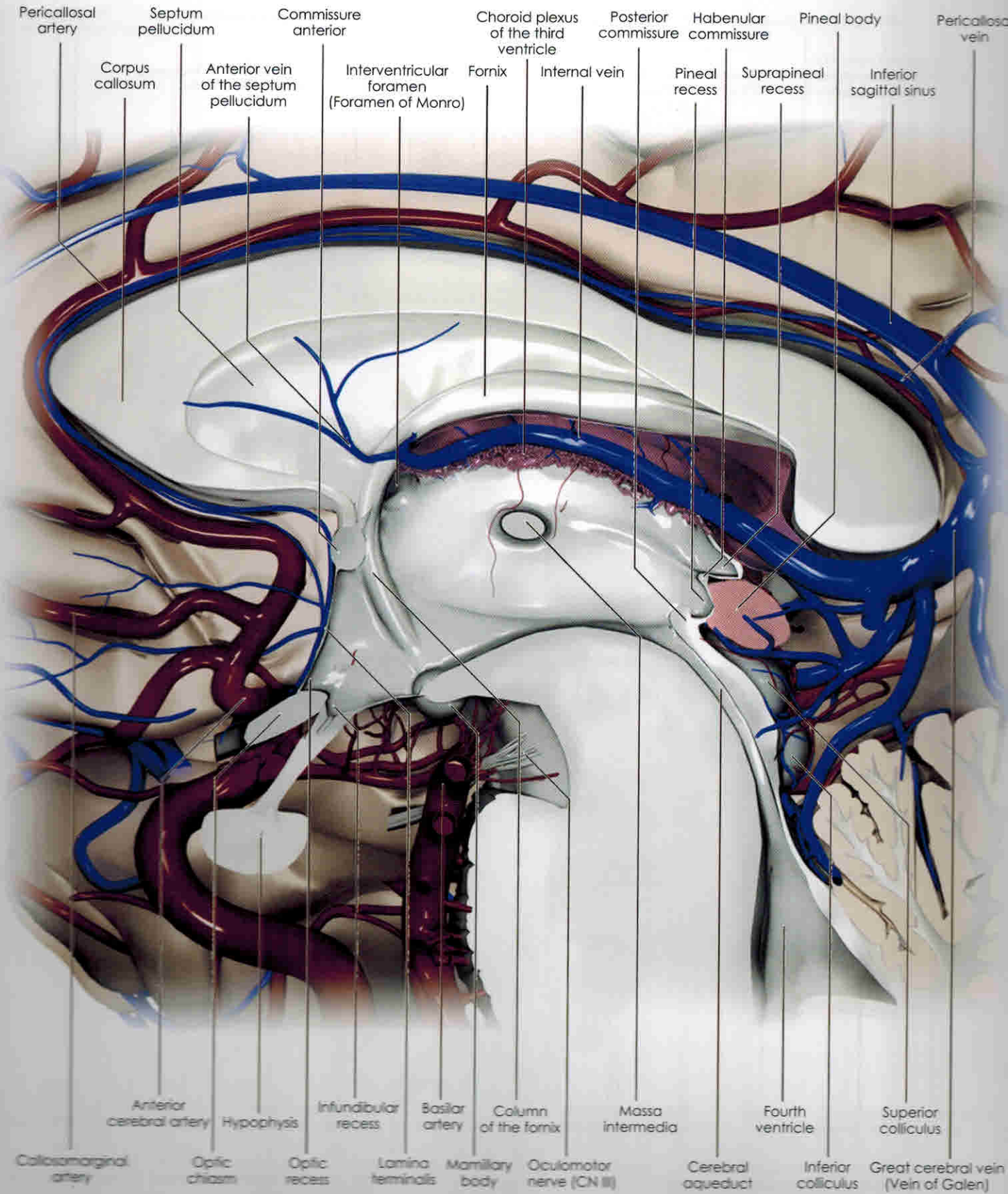
Facial Nerve (CN VII) Anterolateral View



Anterior View



Middle Sagittal View



Pericallosal artery

Septum pellucidum

Commissure anterior

Choroid plexus of the third ventricle

Posterior commissure

Habenular commissure

Pineal body

Pericallosal vein

Corpus callosum

Anterior vein of the septum pellucidum

Interventricular foramen (Foramen of Monro)

Fornix

Internal vein

Pineal recess

Suprapineal recess

Inferior sagittal sinus

Anterior cerebral artery

Hypophysis

Infundibular recess

Basilar artery

Column of the fornix

Massa intermedia

Fourth ventricle

Superior colliculus

Colosmarginal artery

Optic chiasm

Optic recess

Lamina terminalis

Mammillary body

Oculomotor nerve (CN III)

Cerebral aqueduct

Inferior colliculus

Great cerebral vein (Vein of Galen)

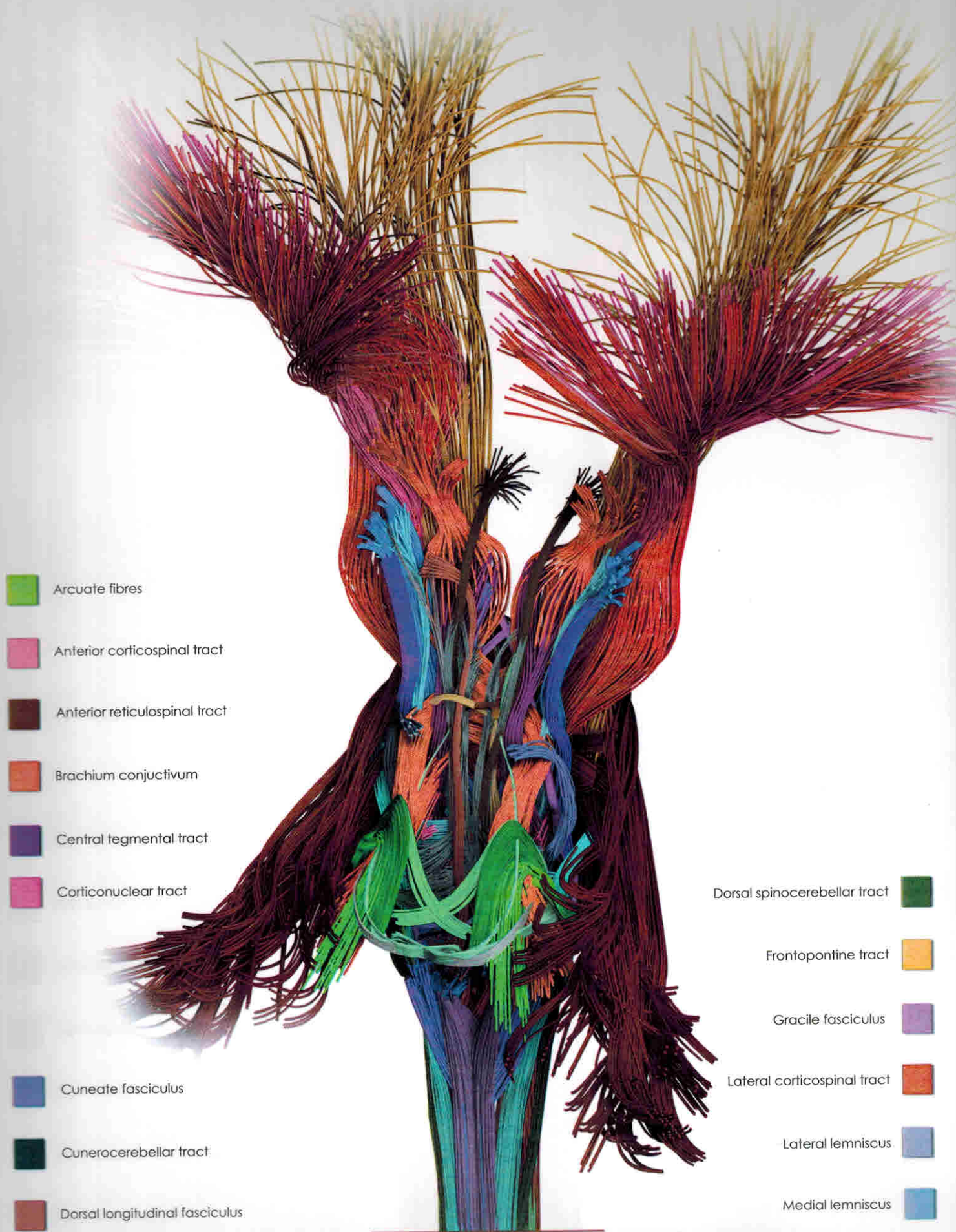
Deep Gray Matter



- Basal nucleus of Meyner
- Lateral preoptic nucleus
- Supraoptic nucleus
- Mammillary body
- Substantia nigra, pars compacta
- Nucleus gigantocellularis
- Dorsal raphe nucleus
- Globus pallidus, external part
- Pulvinar
- Lamina affixa
- Amigdal nucleus
- Accumbens nucleus
- Medial preoptic nucleus
- Anterior hypothalamic nucleus
- Substantia nigra, pars reticulata
- Interpeduncular nucleus
- Fetunculo-pontine nucleus
- Cingulum
- Lateral posterior nucleus
- Fimbria
- Stria terminalis

Fibres of the Brainstem

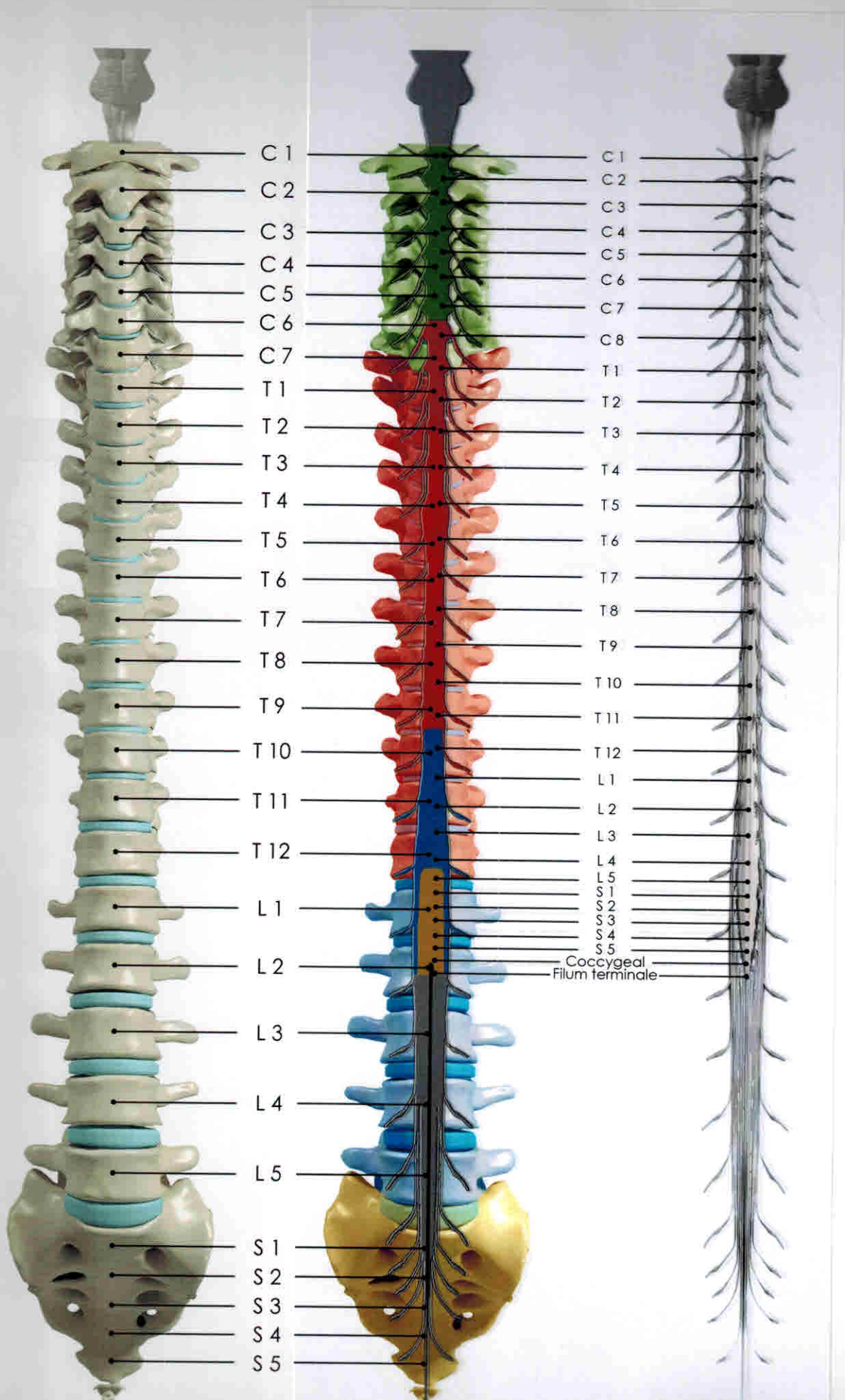
Posterior View



- Arcuate fibres
- Anterior corticospinal tract
- Anterior reticulospinal tract
- Brachium conjunctivum
- Central tegmental tract
- Corticonuclear tract
- Cuneate fasciculus
- Cuneocerebellar tract
- Dorsal longitudinal fasciculus

- Dorsal spinocerebellar tract
- Frontopontine tract
- Gracile fasciculus
- Lateral corticospinal tract
- Lateral lemniscus
- Medial lemniscus

Anterior View



Chiasmal Region

