

MODEL : MO-6916R SUBCLASSES

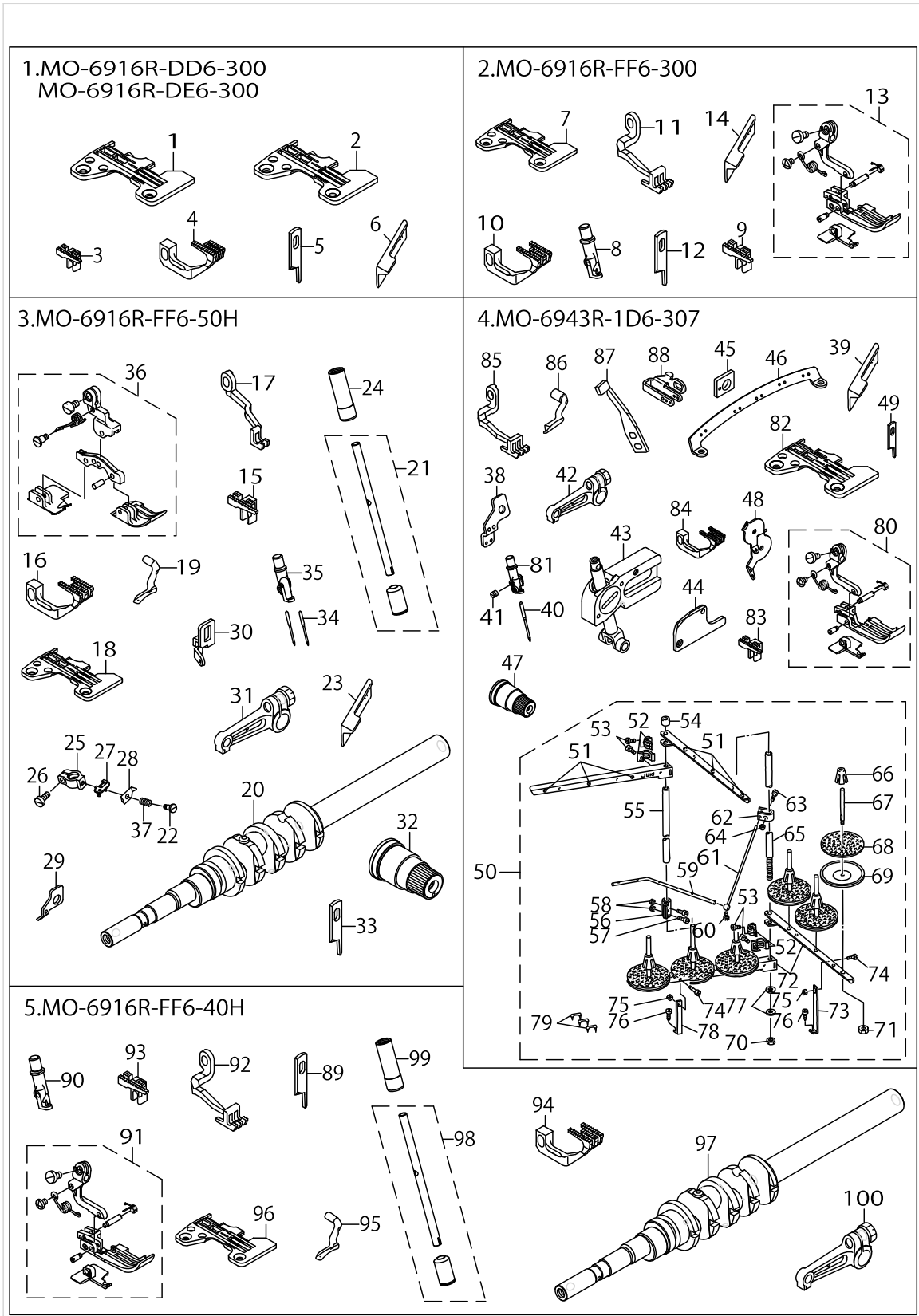
List No : 1351-05

PARTS LIST

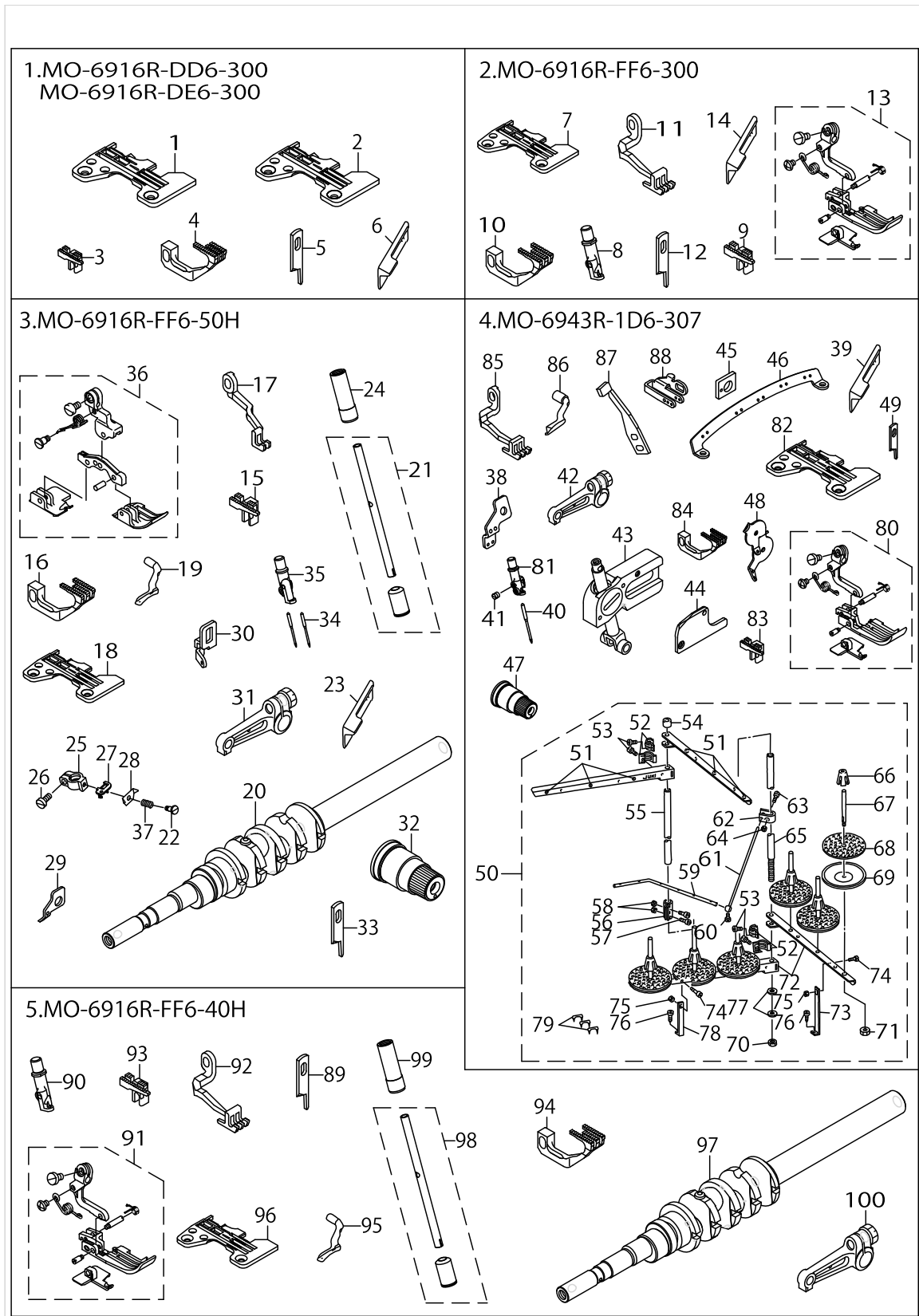
Published:05/12/2017

CONTENTS

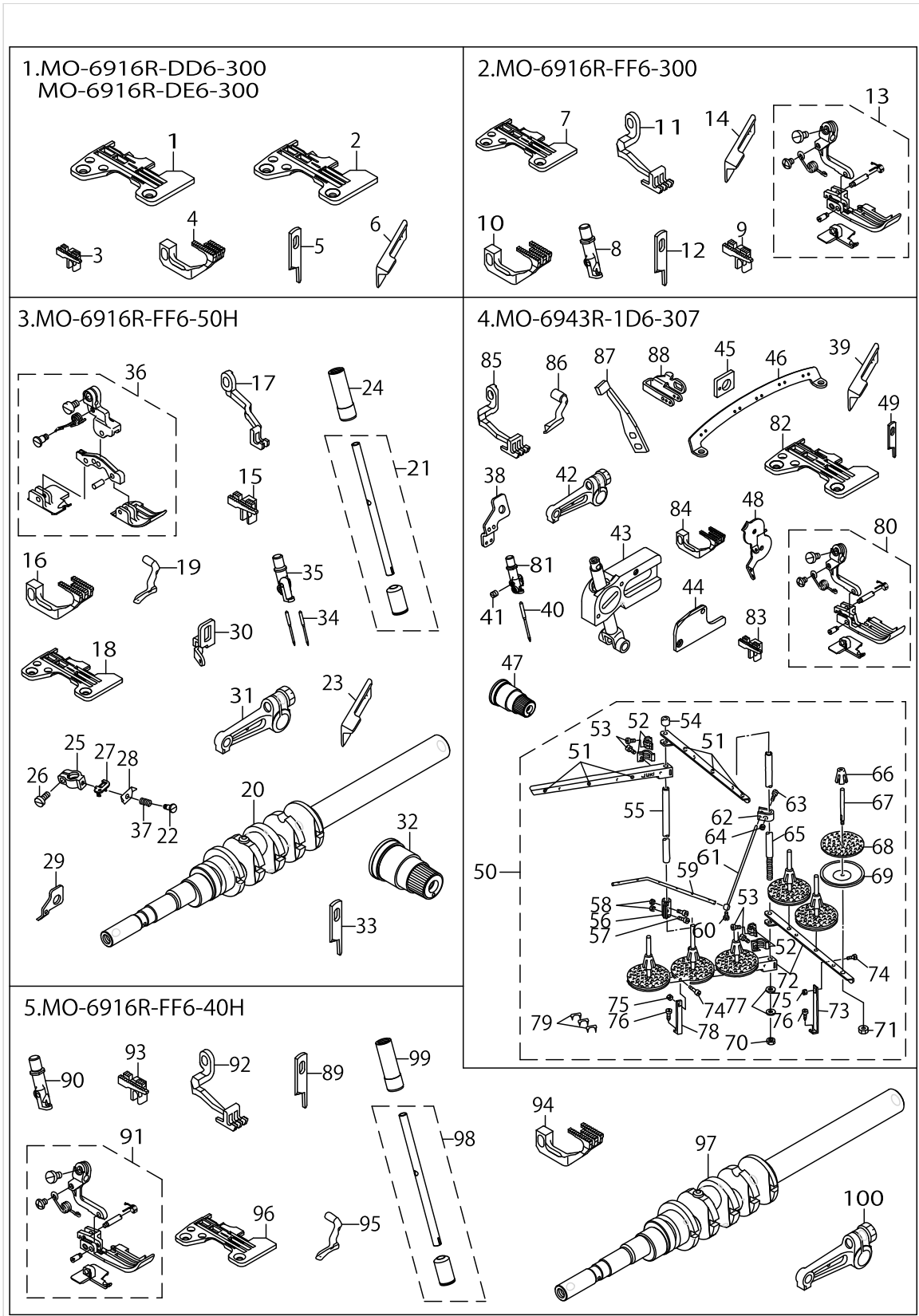
MO-6916R-DD6-300,MO-6916R-DE6-300, MO-6916R-FF6-300, MO-6916R-FF6-50H,.....	1
MO-6943R-1D6-307, MO-6916R-FF6-40H	
MO-6916R-FH6-60H, MO-6943R-2D6-40H.....	7
HOW TO MAKE USE OF THIS PARTS LIST	11



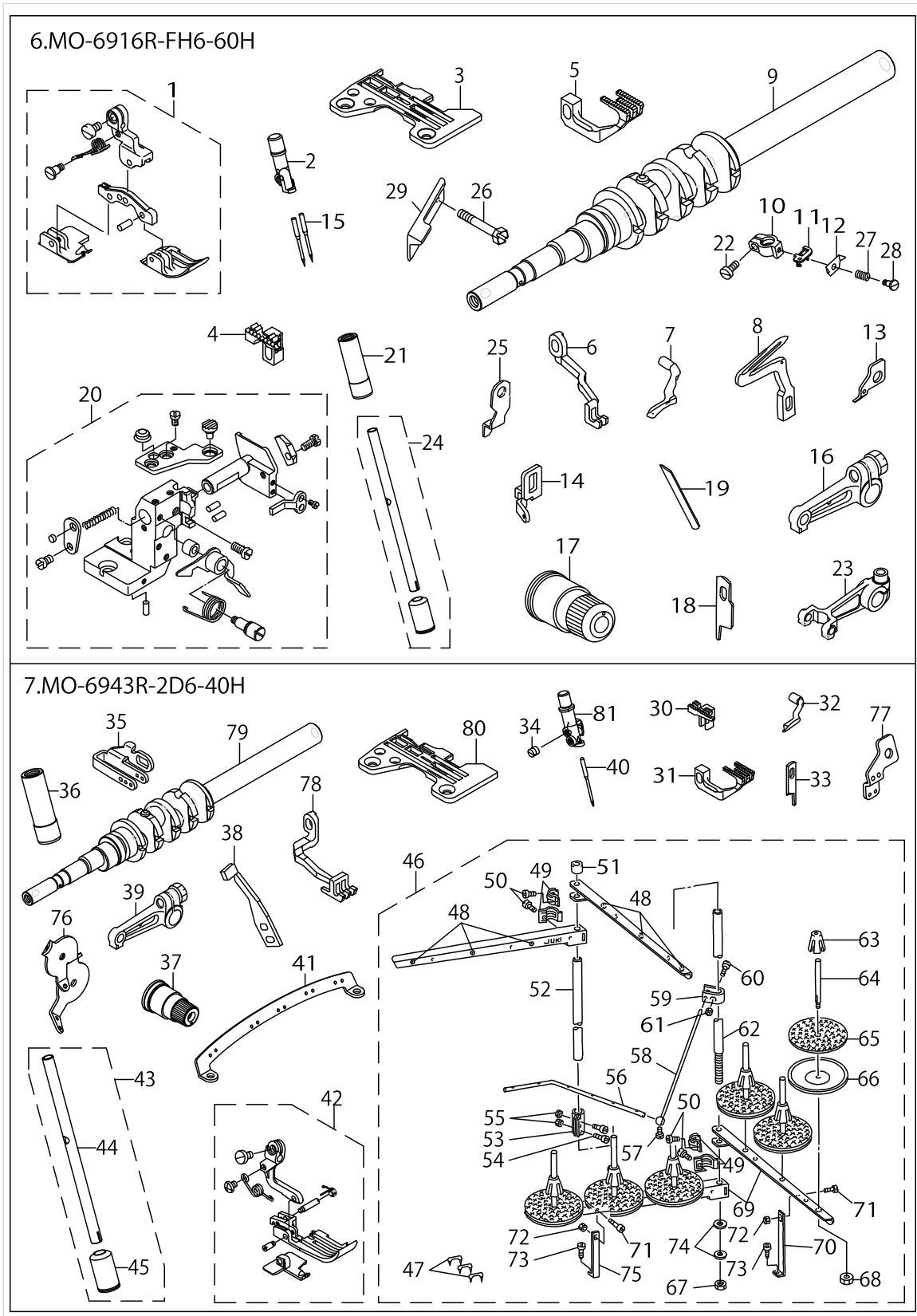
No.	Supply Code	Parts No.	Replacement	Parts name	Remarks	Choice	Step	Level	Cons	Qty	Rep. QTY
1		R4608J6DD00		THROAT PLATE	FOR MO-6-916R-DD6-300					1	
2		R4608J6ED00		THROAT PLATE	FOR MO-6-916R-DE6-300					1	
3		11882909		MAIN FEED DOG						1	
4		12173209		DIFFERENTIAL FEED DOG						1	
5		13150503		KNIFE	EXCEPT JE					1	
6		11845807		UPPER KNIFE	FOR JE					1	
7		R4612J6FD00		THROAT PLATE						1	
8	R	12150306	12257507	NEEDLE CLAMP, CHAIN LOOPER						1	1.00
9		11884004		MAIN FEED DOG						1	
10		12173308		DIFFERENTIAL FEED DOG						1	
11		12330114		TOP FEED DOG						1	
12		13150503		KNIFE	EXCEPT JE					1	
13		12320552		PRESSER FOOT ASM.						1	
14		11845807		UPPER KNIFE	FOR JE					1	
15		11883006		MAIN FEED DOG						1	
16		12173506		DIFFERENTIAL FEED DOG						1	
17		12330205		TOP FEED DOG						1	
18		R4612J6FF00		THROAT PLATE						1	
19		11991908		UPPER LOOPER						1	
20		40023276		MAIN SHAFT ASM.						1	
21		13210059		NEEDLE HOLDER(B) ASM.						1	
22		40014729		NEEDLE THREAD P-RESSER SCREW						1	
23		11845807		UPPER KNIFE	FOR JE					1	
24		13207600		NEEDLE HOLDER BUSHING,UPPER						1	
25		12304309		NEEDLE CLAMP HOLDER						1	
26		SS6080720SP		SCREW						1	
27		31203201		NEEDLE THREAD PRESSER GUIDE						1	
28		31203300		NEEDLE THREAD PRESSER PLATE						1	
29		12304606		TAKE-UP LEVER G-UIDE,CHAIN LOOP						1	
30		31203003		TAKE-UP LEVER GUIDE						1	
31		13131156		UPPER LOOPER ARM B ASM.						1	
32		13137559		THREAD TENSION SPRING JUNCTION						1	
33		13150503		KNIFE	EXCEPT JE					1	
34		MDC270B1600		NEEDLE DCX27 #16						2	
35		12257507		NEEDLE CLAMP, CHAIN LOOPER						1	
36		12320958		PRESSER FOOT ASM.						1	
37		40014730		NEEDLE THREAD P-RESSER SPRING						1	
38	R	12281804	13111604	TAKE-UP LEVER G-UIDE, 2-NEEDLE						1	1.00
39		11845807		UPPER KNIFE	FOR JE					1	
40		MDC270B1100		NEEDLE DCX27 #11						1	
41		SS8080310TP		SCREW 1/8-44 L=2.8						1	
42		13131156		UPPER LOOPER ARM B ASM.						1	
43		40016841		GUIDE SUPPORT B ASM						1	
44		13222302		UPPER LOOPER GAUGE COVER B						1	



No.	Supply Code	Parts No.	Replacement	Parts name	Remarks	Choice	Step	Level	Cons	Qty	Rep. QTY
45		13131909		GUIDE SUPPORT GAUGE						1	
46		13225206		THREAD GUIDE						1	
47		13137559		THREAD TENSION SPRING JUNCTION						1	
48		13225305		TENSION DISK THREAD GUIDE						1	
49		13150503		KNIFE	EXCEPT JE					1	
50	R	11969854	40106586	THREAD STAND ASM.						1	1.00
51	R	B3319704L00	22931208	THREAD GUIDE				*		6	1.00
52		B3318704L00A		THREAD GUIDE ARM JOINT				*		4	
53		SM6061610SC		SCREW M6 L=16				*		4	
54	R	B3311704000	22931406	SPOOL REST ROD CAP				*		1	1.00
55	R	11185204	40096354	SPOOL REST ROD,UPPER				*		1	1.00
56	R	B3305704000A	40096354	SPOOL REST ROD JOINT				*		1	1.00
57		SM4051405SE		SCREW M5 L=14				*		2	
58		NM6050001SE		NUT M5				*		2	
59		B3311843000		LOWER THREAD GUIDE				*		1	
60		SS7110540SP		SCREW 11/64-40 L=5				*		1	
61	R	B3309704000	26910059	THREAD GUIDE ARM				*		1	1.00
62	D	B3304704000A		THREAD GUIDE ARM HOLDER				*		1	
63	D	SM6053000SE		SCREW M5X0.8 L=30				*		1	
64		NM6050001SE		NUT M5				*		1	
65	R	11185105	40096354	SPOOL REST ROD,LOWER				*		1	1.00
66	D	11185501		SPOOL RETAINER				*		6	
67	R	B3320704L00A	40085790	SPOOL PIN				*		6	1.00
68	D	B3311012000		SPOOL REST CUSHION				*		6	
69	R	11966504	22930804	SPOOL REST				*		6	1.00
70	R	B3317704000	NM6160511SE	NUT				*		1	1.00
71		NM6050001SE		NUT M5				*		6	
72	R	11969508	13168802	SPOOL REST ARM A				*		2	1.00
73	D	B3321704L0B		SPOOL REST ARM SUPPORT, B				*		1	
74		SM4061201SE		SCREW M6 L=12				*		2	
75		NM6060001SE		NUT M6				*		2	
76		SK3382001SE		SCREW D=3.8 L=20				*		2	
77		WP1612616SE		WASHER 16X30X2.6				*		2	
78		B3321704L00		SPOOL REST ARM SUPPORT, A				*		1	
79		MAO11532000		CORD STAPLE				*		3	
80		12321451		PRESSER ASM.						1	
81		12275004		NEEDLE CLAMP CHAIN LOOPER.						1	
82		R4612J6DE01		THROAT PLATE						1	
83		11884004		MAIN FEED DOG						1	
84		12173308		DIFFERENTIAL FEED DOG						1	
85		12330114		TOP FEED DOG						1	
86		12176004		UPPER LOOPER						1	
87		11999406		NEEDLE HOLDER						1	
88		13209002		NEEDLE THREAD G- UIDE, 3-NEEDLE						1	
89		13150503		KNIFE						1	

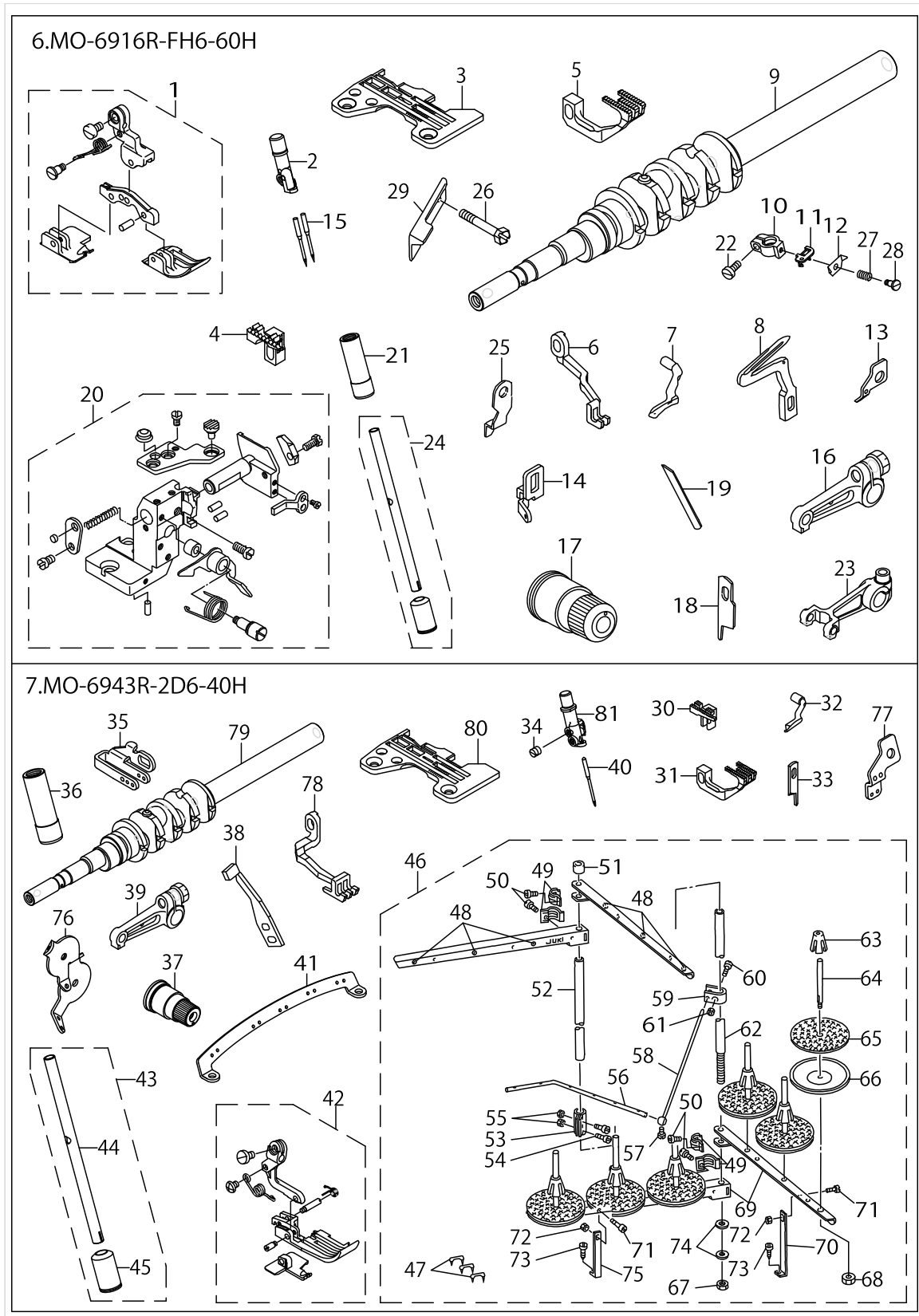


No.	Supply Code	Parts No.	Replacement	Parts name	Remarks	Choice	Step	Level	Cons	Qty	Rep. QTY
90		12257507		NEEDLE CLAMP, CHAIN LOOPER						1	
91		12320552		PRESSER FOOT ASM.						1	
92		12330114		TOP FEED DOG						1	
93		11884004		MAIN FEED DOG						1	
94		12173308		DIFFERENTIAL FEED DOG						1	
95		11991908		UPPER LOOPER						1	
96		R4612J6FD00		THROAT PLATE						1	
97		40023276		MAIN SHAFT ASM.						1	
98		13210059		NEEDLE HOLDER(B) ASM.						1	
99		13207600		NEEDLE HOLDER BUSHING,UPPER						1	
100		13131156		UPPER LOOPER ARM B ASM.						1	



MO-6916R-FH6-60H, MO-6943R-2D6-40H

No.	Supply Code	Parts No.	Replacement	Parts name	Remarks	Choice	Step	Level	Cons	Qty	Rep. QTY
1		12320958		PRESSER FOOT ASM.						1	
2		12150702		NEEDLE CLAMP, CHAIN LOOPER						1	
3		R4612J6HK00		THROAT PLATE						1	
4		12171104		MAIN FEED DOG						1	
5		12174207		DIFFERENTIAL FEED DOG						1	
6		12330205		TOP FEED DOG						1	
7		12176202		UPPER LOOPER						1	
8		11999802		LOWER LOOPER						1	
9		40023278		MAIN SHAFT ASM.						1	
10		12304309		NEEDLE CLAMP HOLDER						1	
11		31203201		NEEDLE THREAD PRESSER GUIDE						1	
12		31203300		NEEDLE THREAD PRESSER PLATE						1	
13		12304606		TAKE-UP LEVER GUIDE						1	
14		31203003		TAKE-UP LEVER GUIDE, CHAIN LOOP						1	
15		MDC270B2100		NEEDLE DCX27 #21						2	
16		13131156		UPPER LOOPER ARM B ASM.						1	
17	R	12255451	13140652	THREAD TENSION SPRING ASM.						2	1.00
18		12004909		KNIFE	EXCEPT JE					1	
19		11566502		LOWER KNIFE						1	
20	R	13232855	12133682	LOWER KNIFE BRACKET ASM.						1	1.00
21		13207600		NEEDLE HOLDER BUSHING, UPPER						1	
22		SS6080720SP		SCREW						1	
23		13207956		NEEDLE DRIVING ARM ASM.						1	
24		13210059		NEEDLE HOLDER(B) ASM.						1	
25		11565603		UPPER KNIFE COVER						1	
26		SS9112420TP		SCREW 11/64-40L=24	FOR JE					1	
27		40014730		NEEDLE THREAD PRESSER SPRING						1	
28		40014729		NEEDLE THREAD PRESSER SCREW						1	
29		11565900		UPPER KNIFE	FOR JE					1	
30		11882305		MAIN FEED DOG						1	
31		12173308		DIFFERENTIAL FEED DOG						1	
32		12176103		UPPER LOOPER						1	
33		13150503		KNIFE						1	
34		SS8080310TP		SCREW 1/8-44 L=2.8						1	
35		13209002		NEEDLE THREAD GUIDE, 3-NEEDLE						1	
36		13207600		NEEDLE HOLDER BUSHING, UPPER						1	
37		13137559		THREAD TENSION SPRING JUNCTION						1	
38		11999406		NEEDLE HOLDER						1	
39		13131156		UPPER LOOPER ARM B ASM.						1	
40		MDC270B1100		NEEDLE DCX27 #11						1	
41		13225206		THREAD GUIDE						1	
42		12321253		PRESSER ASM.						1	
43		13210059		NEEDLE HOLDER(B) ASM.						1	
44		13210000		NEEDLE HOLDER(B)				*		1	



MO-6916R-FH6-60H, MO-6943R-2D6-40H

No.	Supply Code	Parts No.	Replacement	Parts name	Remarks	Choice	Step	Level	Cons	Qty	Rep. QTY
45	R	13207709	13208350	NEEDLE ROD BUSHING, LOWER				*		1	1.00
46	R	11969854	40106586	THREAD STAND ASM.				*		1	1.00
47		MAO11532000		CORD STAPLE				*		3	
48	R	B3319704L00	22931208	THREAD GUIDE				*		6	1.00
49	R	B3318704L00	B3318704L00A	THREAD GUIDE ARM JOINT				*		4	1.00
50		SM6061610SC		SCREW M6 L=16				*		4	
51	R	B3311704000	22931406	SPOOL REST ROD CAP				*		1	1.00
52	R	11185204	40096354	SPOOL REST ROD,UPPER				*		1	1.00
53	R	B3305704000A	40096354	SPOOL REST ROD JOINT				*		1	1.00
54		SM4051405SE		SCREW M5 L=14				*		2	
55		NM6050001SE		NUT M5				*		2	
56		B3311843000		LOWER THREAD GUIDE				*		1	
57		SS7110540SP		SCREW 11/64-40 L=5				*		1	
58	R	B3309704000	26910059	THREAD GUIDE ARM				*		1	1.00
59	D	B3304704000A		THREAD GUIDE ARM HOLDER				*		1	
60	D	SM6053000SE		SCREW M5X0.8 L=30				*		1	
61		NM6050001SE		NUT M5				*		1	
62	R	11185105	40096354	SPOOL REST ROD,LOWER				*		1	1.00
63	D	11185501		SPOOL RETAINER				*		6	
64	D	B3320704L00		SPOOL PIN				*		6	
65	D	B3311012000		SPOOL REST CUSHION				*		6	
66	R	11966504	22930804	SPOOL REST				*		6	1.00
67	R	B3317704000	NM6160511SE	NUT				*		1	1.00
68		NM6050001SE		NUT M5				*		6	
69	R	11969508	13168802	SPOOL REST ARM A				*		4	1.00
70	D	B3321704LOB		SPOOL REST ARM SUPPORT, B				*		1	
71		SM4061201SE		SCREW M6 L=12				*		2	
72		NM6060001SE		NUT M6				*		2	
73		SK3382001SE		SCREW D=3.8 L=20				*		2	
74		WP1612616SE		WASHER 16X30X2.6				*		2	
75		B3321704L00		SPOOL REST ARM SUPPORT, A				*		1	
76		13225305		TENSION DISK THREAD GUIDE				*		1	
77		13111604		LEVER GUIDE				*		1	
78		12330114		TOP FEED DOG				*		1	
79		40023276		MAIN SHAFT ASM.				*		1	
80		R4608J6DE01		THROAT PLATE				*		1	
81		12150504		CHAIN LOOPER NEEDLE CLAMP				*		1	

HOW TO MAKE USE OF THIS PARTS LIST

1.As to "#01" and "#02" refer to the "Note" given at the bottom of the respective pages.

2.Codes on the "Qty" column

- Each numeral indicates the number of parts required.
- "0.1" and "2.5" indicate the length (in meters) of the respective parts.

3.Parentheses mean that the corresponding part is a subpart that constructs an assembly part.

4.Dotted lines on the Figures indicate assembly parts.

1. リストページの# 0 1、# 0 2の印は、ページ下の"注記"の説明を参照下さい。
2. 数量欄の数字は、個数を表し、0. 1、2. 5等の数値は、長さ（単位メートル）を表します。
3. 数量欄の（ ）は、組部品を構成している子部品であることを意味します。
4. イラストページの-----枠は、組構成であることを意味します。

NUMERICAL INDEX OF PARTS

PART NO	PAGE	REF NO.	PART NO	PAGE	REF NO.	PART NO	PAGE	REF NO.
11185105	4	65	12275004	4	81	13232855	8	20
11185105	10	62	12281804	2	38	31203003	2	30
11185204	4	55	12304309	2	25	31203003	8	14
11185204	10	52	12304309	8	10	31203201	2	27
11185501	4	66	12304606	2	29	31203201	8	11
11185501	10	63	12304606	8	13	31203300	2	28
11565603	8	25	12320552	2	91	31203300	8	12
11565900	8	29	12320552	6	91	40014729	2	22
11566502	8	19	12320958	2	36	40014729	8	28
11845807	2	39	12320958	8	1	40014730	2	37
11882305	8	30	12321253	8	42	40014730	8	27
11882909	2	3	12321451	4	80	40016841	2	43
11883006	2	15	12330114	2	92	40023276	2	97
11884004	2	93	12330114	4	92	40023276	6	97
11884004	4	93	12330114	6	92	40023276	10	79
11884004	6	93	12330114	10	78	40023278	8	9
11966504	4	69	12330205	2	17	B3304704000A	4	62
11966504	10	66	12330205	8	6	B3304704000A	10	59
11969508	4	72	13111604	10	77	B3305704000A	4	56
11969508	10	69	13131156	2	100	B3305704000A	10	53
11969854	4	50	13131156	6	100	B3309704000	4	61
11969854	10	46	13131156	8	39	B3309704000	10	58
11991908	2	95	13131909	4	45	B3311012000	4	68
11991908	6	95	13137559	2	47	B3311012000	10	65
11999406	4	87	13137559	4	47	B3311704000	4	54
11999406	8	38	13137559	8	37	B3311704000	10	51
11999802	8	8	13150503	2	89	B3311843000	4	59
12004909	8	18	13150503	4	89	B3311843000	10	56
12150306	2	8	13150503	8	33	B3317704000	4	70
12150504	10	81	13207600	2	99	B3317704000	10	67
12150702	8	2	13207600	6	99	B3318704L00	10	49
12171104	8	4	13207600	8	36	B3318704L00A	4	52
12173209	2	4	13207709	10	45	B3319704L00	4	51
12173308	2	94	13207956	8	23	B3319704L00	10	48
12173308	4	94	13209002	4	88	B3320704L00	10	64
12173308	6	94	13209002	8	35	B3320704L00A	4	67
12173308	8	31	13210000	8	44	B3321704L00	4	78
12173506	2	16	13210059	2	98	B3321704L00	10	75
12174207	8	5	13210059	6	98	B3321704L0B	4	73
12176004	4	86	13210059	8	43	B3321704L0B	10	70
12176103	8	32	13222302	2	44	MAO11532000	4	79
12176202	8	7	13225206	4	46	MAO11532000	10	47
12255451	8	17	13225206	8	41	MDC270B1100	2	40
12257507	2	90	13225305	4	48	MDC270B1100	8	40
12257507	6	90	13225305	10	76	MDC270B1600	2	34

NUMERICAL INDEX OF PARTS

PART NO	PAGE	REF NO.
MDC270B2100	8	15
NM6050001SE	4	71
NM6050001SE	10	68
NM6060001SE	4	75
NM6060001SE	10	72
R4608J6DD00	2	1
R4608J6DE01	10	80
R4608J6ED00	2	2
R4612J6DE01	4	82
R4612J6FD00	2	96
R4612J6FD00	6	96
R4612J6FF00	2	18
R4612J6HK00	8	3
SK3382001SE	4	76
SK3382001SE	10	73
SM4051405SE	4	57
SM4051405SE	10	54
SM4061201SE	4	74
SM4061201SE	10	71
SM6053000SE	4	63
SM6053000SE	10	60
SM6061610SC	4	53
SM6061610SC	10	50
SS6080720SP	2	26
SS6080720SP	8	22
SS7110540SP	4	60
SS7110540SP	10	57
SS8080310TP	2	41
SS8080310TP	8	34
SS9112420TP	8	26
WP1612616SE	4	77
WP1612616SE	10	74