

Z2S16...type Modular Hydraulic Operated Check Valve



Z2S16...5XJ...type

Size 16
Max. Working Pressure: 315 bar
Max. Flow: 300 L/min

Contents

Function and configuration	02
Symbols	02
Specification	03
Technical data	03
Characteristic curves	03
Unit dimensions	04

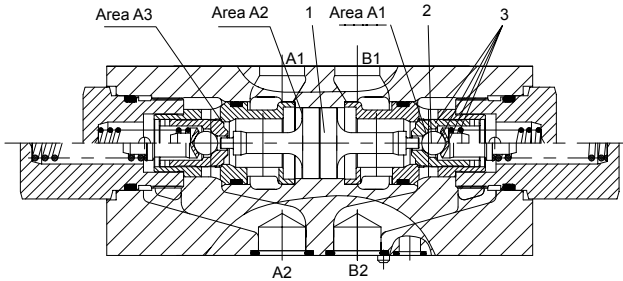
Features

- Porting pattern to DIN 24 340
- Leakage-free closure for one or two ports
- Sandwich plate valve,
for use in vertical stacking assemblies
- 4 cracking pressures, optional

Function and configuration

Z2S16 type valve is a releasable check valve in sandwich plate design. It is used for the leakage-free closure of one or two service ports, also in case of long periods of time. Free flow occurs from A1 to A2 or B1 to B2. Flow in the opposite direction is blocked.

When fluid flows from A1 to A2, the spool (1) is pressurised and is pushed to the right, thereby opening the ball poppet valve (2) which then opens the check valve (3). In order to make reliable closure of the two check valves in the neutral position, the service ports A1 and B1 of the directional valve must be connected to returning line .

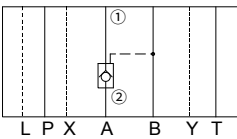


Z2S16..5XJ/...modular hydraulic check valve

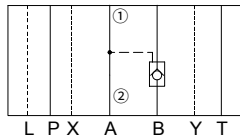
1 Spool 2 Ball poppet valve 3 Check valve

Symbols (① =valve side, ② = sub-plate side)

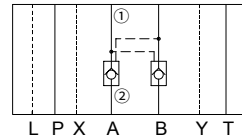
Z2S16A..5XJ/...



Z2S16B..5XJ/...



Z2S16..5XJ/...



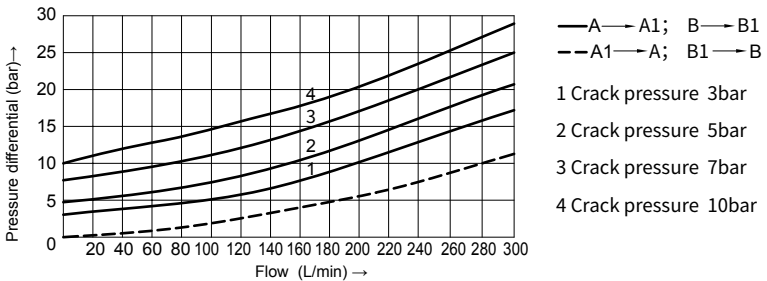
Specification

Z2S	16			5XJ	*
Modular Hydraulic check valve		Further details in clear text			
Size 16	=16	No code =		NBR seals	
Leak-free closure in channels A and B = -		V =		FKM seals	
Leak-free closure in channel A = A		5XJ= Series 50J to 59J			
Leak-free closure in channel B = B		(50J to 59J: unchanged installation and connection dimensions)			
		1 =		Crack pressure 3bar	
		2 =		Crack pressure 5bar	
		3 =		Crack pressure 7.5bar	
		4 =		Crack pressure 10bar	

Technical data

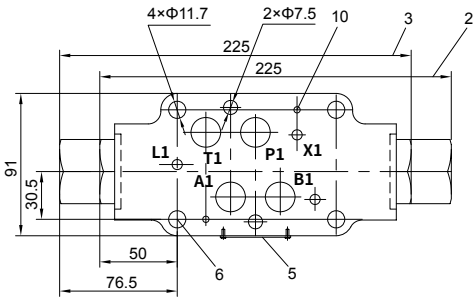
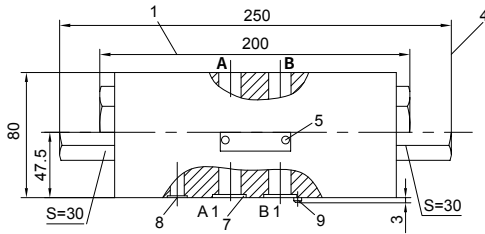
Fluid		Mineral oil suitable for NBR and FKM seal Phosphate ester for FKM seal
Degree of contamination		Maximum permissible degree of fluid contamination: Class 9. NAS 1638 or 20/18/15, ISO4406
Fluid temperature range	°C	-30 to +80 (NBR seal) -20 to +80 (FKM seal)
Viscosity range	mm ² /s	2.8 to 500
Operating pressure	bar	315
Max.flow-rate	L/min	300
Flow direction		See symbols
Crack pressure(free flow direction)	bar	3, 5, 7.5, 10
Area ratio		A1/A2=1/11.8 A3/A2=1/2.8 (Please refer to page"02/04"for section drawing)
Weight	kg	6.8

Characteristic curves (Measured at t=40°C ±5°C , using HLP46)



Unit dimensions

(Dimensions in mm)



- 1 Valve with version 1 or 2 cracking pressure, check valve in port A and/or port B
- 2 Valve with version 3 or 4 cracking pressure, check valve in port B.
- 3 Valve with version 3 or 4 cracking pressure, check valve in port A.
- 4 Valve with version 3 or 4 cracking pressure, check valve in port A and B
- 5 Name plate
- 6 Mounting holes
- 7 O-rings
22×2.5 for ports A, B, P, T
- 8 O-rings
10×2 for ports X, Y, L
- 9 Locating pin
- 10 Locating holes

