

19x40w IP LED Moving Head Light

User Manual



This manual contains important information.
Please read before operating fixture.

1 SECURITY TIPS

WARNING!!! To reduce the risk of fire, electric shock, or injury to persons, follow these important safety instructions:

- Non-professionals, not to disassemble the light arbitrarily and lighting accessories inside.
- Rated voltage range: AC110V-120V/60Hz or AC200V-240V / 50HZ (to be selected).
- Not beam irradiate the flammable materials, flammable materials and the lamp should be maintained at least 1M over the distance.
- Lamps used in ambient temperature: -15 °C -40 °C, the highest temperature of the surface of the lamp: 60 °C.
- To keep away from the liquid substance and humid environment.
- Before using the lights must ensure the good grounding, can not install charging and remove any parts.
- The installation of lights, must be fixed screw fasteners with additional security cable and regular inspection.
- Lamps consecutive working hours is not recommended more than 10 hours.
- Should stop using the lights in time when happens unusual conditions during the process.
- Lamp parts of the rotation, external accessories and paste parts should be regular inspected, such as the emergence of loose and rock, should be reinforced in a timely manner to prevent the accident.
- Lamps adopt strong winds to refrigerate, it is easy to accumulate the dust, so you have to clean it weekly especially the cooling air opening, otherwise the dust will plug leading to poor light.

2 TECHNOLOGY DETAILS

Input Voltage: AC90-260V 50/60Hz

Power Consumption: 880W

Light Source: 19pcs 40w 4-IN-1 LEDs (R, G, B, W)

LED Feature: Individual LED control of each color

Life time:50000hours

Zoom range:5-45degree

Control mode:DMX512, master-slave, Sound, Auto

Channel: Basic Engine: Standard 21CH/22CH, Shapes 35CH/36CH

Pixel Engine: RGB 22+57(79)CH, RGBW 36+76(112)CH

Protection rating:IP65

Net weight:22.63kgs

Product size: 408x302.1x490.1mm

Specification:

Effect: Beam, Wash, FX(Kaleidoscope effects)

Bi-directional rotating front lens

0-100% smoothly dimmer

Strobe: 1-25Hz

Full bright color rendering index: Ra=73.5

Single white color temperature: 7800K

Display: LCD display, easy navigation to change Chinese/English, can make screen inverted 180 degrees

Pan/Tilt Resolution: 16 bit

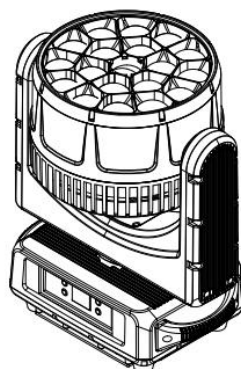
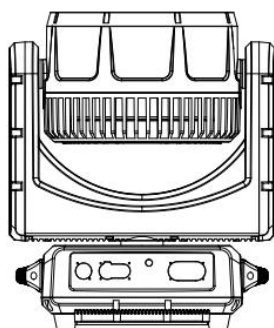
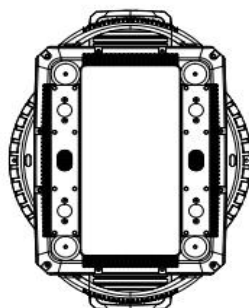
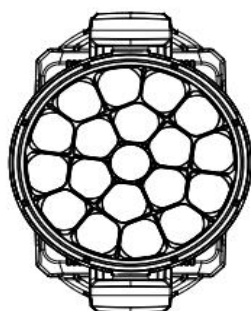
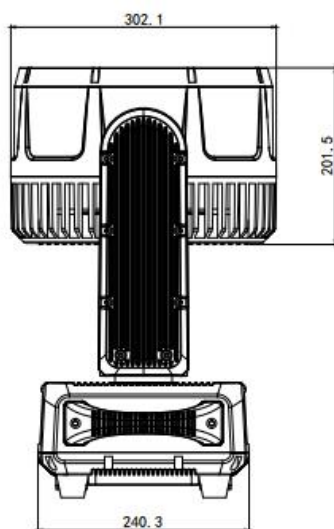
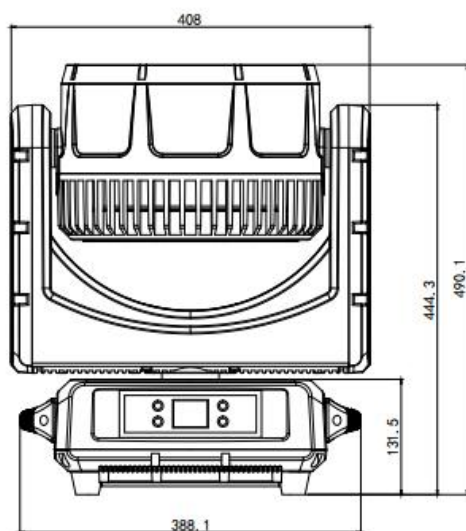
Dimmer Resolution: 16 bit

Movement: Pan 540degree, Tilt 205degree

DMX in/out: 3 pin/ 5pin XLR

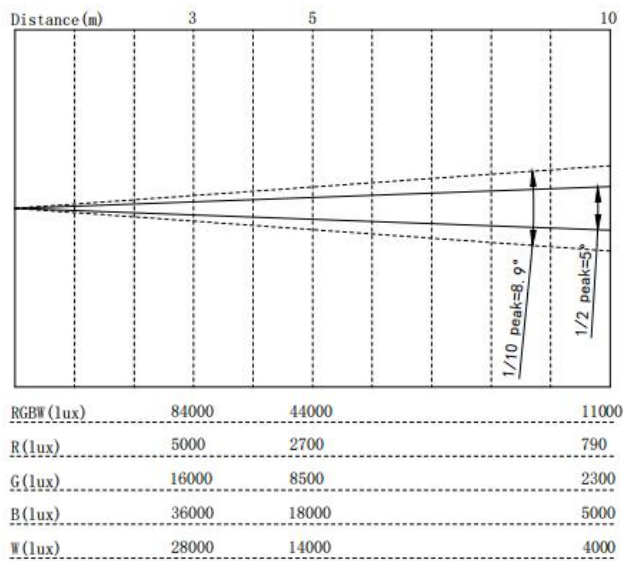
Power connection: Powercon in/out

Two side handles for transportation

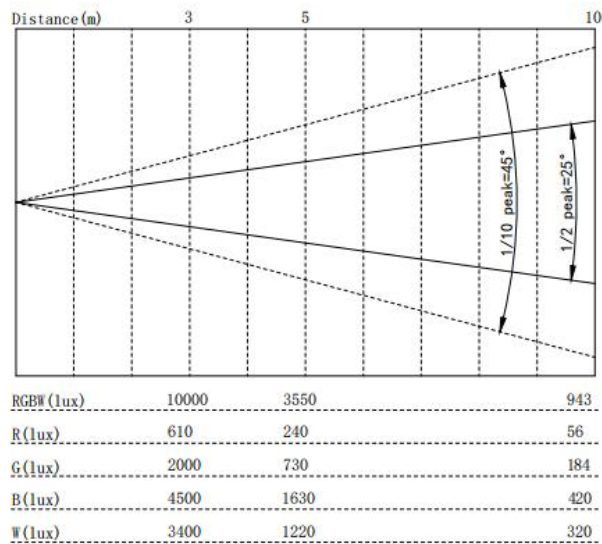


illuminance:

Minimum Zoom



Maximum Zoom



3 Board Instruction

Main menu	Secondary menu	Third menu/parameters
Address	001-512	DMX address setting
Set	Run mode	DMX/Sound/Auto1/Auto2
	Channel	21CH/22CH/35CH/36CH
	Invert Pan	On/Off
	Invert Tilt	On/Off
	Hall Crct	On/Off
	Encoder Crct	On/Off
	Signal keep	On/Off
	Screen saver	On/Off
	Invert screen	Auto/On/Off
	Update slave	On/Off
	Language	中文/English
	Screen lock	On/Off
	Speed mode	Normal/Fast
	Load Default	OK/Cancel
Manual	Current channel mode channel	0-255
Calibration	Password	Lamp Calibration
Reset	Reset Effect	
	Reset Scan	
	Reset All	
Note	Reset Info	Display reset error information
	DMX Data	Receive the channel value of the console
	Sensor Info	Hall
		X Enco
		Y Enco

	Hardware	10.10.01.0
	Software	04.13.14.0

➤ Screen Automatic Rotation Function

The system can automatically rotate the screen according to the direction of gravity without manual rotation. You can also turn off the automatic rotation function.

➤ Manual Test

This interface is used to control the current lamps. Press "enter" key to enter the editing state. Press the "Up" and "Down" keys to change the channel value. Press "enter" again to save the modified values and exit editing; press "Menu" to exit editing without saving the modified values.

➤ System Calibration

Enter the password "0000" and press "Enter" to enter.

Option	Instruction
Motor calibration	After entering the sub-interface, you can adjust the travel of X-axis, Y-axis, focusing and rotating motor. The adjustment range is 0~255, and 127 means no adjustment.
Power calibration	After entering the sub-interface, the power of 19 lamp beads can be adjusted, and the adjustment range is 0~255, with 255 indicating the maximum power.
White balance calibration	After entering the sub-interface, the white balance of red, green, blue and white of the total LED of the lamp and LED1-19 can be adjusted, with 255 indicating the maximum white balance.
Other calibration	Voice sensitivity calibration and password

	modification.
--	---------------

➤ **Reset**

Option	Instruction
Reset Effect	other than XY Effect motor reset
Reset Scan	XY axis reset
Reset All	Lamp reset

➤ **System Information**

Option	Instruction
Reset information	If the red ERR indicator lights up, it means that the lamps are running incorrectly, and the details can be viewed in the sub-interface.
DMX data monitoring	From this, the sub-interface is entered, and the channel value is displayed numerically for viewing.
Sensor information	Real-time monitoring the status of optical coupler, Hall and other sensors on the lamp.
Hardware version number	Hardware information of lamps
Software version number	Lamp software version

4 DMX CHANNEL SHEET

Basic Engine

21CH	22CH	35CH	36CH	Value	Function
1	1	1	1	0-255	Red
2	2	2	2	0-255	Red Fine
3	3	3	3	0-255	Green
4	4	4	4	0-255	Green Fine
5	5	5	5	0-255	Blue
6	6	6	6	0-255	Blue Fine
7	7	7	7	0-255	White
8	8	8	8	0-255	White Fine
9	9	9	9	0-255	Linear CTO,from 8000K-2500K
10	10	10	10	0-255	Macro Color, See Marco Color Table
11	11	11	11	0-3	Light Off
				4-103	Strobe Linear from slow to fast
				104-107	Light ON
				108-207	Pulsation Linear from slow to fast
				208-212	Light ON
				213-225	Random Strobe at low frequency
				226-238	Random Strobe at medium frequency
				239-251	Random Strobe at high frequency
				252-255	Light ON
12	12	12	12	0-255	Dimmer
13	13	13	13	0-255	Dimmer Fine
14	14	14	14	0-255	Pan

15	15	15	15	0-255	Pan Fine
16	16	16	16	0-255	Tilt
17	17	17	17	0-255	Tilt Fine
18	18	18	18	0-11	No Function
				12-24	Pan Tilt Fast(Default)
				25-37	Pan Tilt Normal
				38-102	No Function
				103-105	Pixel Map Enabled
				106-255	No Function
19	19	19	19	0-25	No Function
				26-76	Effects Reset
				77-127	Pan / Tilt Reset
				128-255	All Reset
20	20	20	20	0-255	Zoom
21	21	21	21		Zoom Rotation
				0-127	Linear Zoom Rotation
				128-190	Anticlockwise Rotation from fast to slow
				191-192	Stop
				193-255	Clockwise Rotation from slow to fast
-	22	-	-	0-255	Reserve
-	-	22	22		Shape Selection
				0-7	No Function
				8-70	Built-in 63 effects(see below table)
				71-255	No Function
-	-	23	23	0-255	Shape Speed(see below)
-	-	24	24	0-255	Shape Fade(see below)
-	-	25	25	0-255	Shape R
-	-	26	26	0-255	Shape G

-	-	27	27	0-255	Shape B
-	-	28	28	0-255	Shape W
-	-	29	29	0-255	Shape Dimmer
-	-	30	30	0-255	Backgroud Dimmer
-	-	31	31	0-255	Shape Transition
-	-	32	32	0-255	Shape Offset (see below)
-	-	33	33	0-255	Foreground Strobe
-	-	34	34	0-255	Background Strobe
-	-	35	35	0-255	Background Select (see below)
-	-	-	36	0-255	Reserve

Shape sele	Macro Name	Description	Shape speed	Shape Offset
0-7	Macro off	-	-	-
8	Pixel1	The rings used by the marco are turned on with the foreground color.	-	-
9	Ring1			
10	Ring2			
11	Ring3			
12	Pixel1+ Ring1			
13	Pixel1+ Ring2			
14	Pixel1+ Ring3			
15	Single ring	-	0-63 =Radius size,static. 64-158 =Max to min speed, closing effect 159-160 =STOP	0-9→continuous 10-255→random distribution of flash
16	Filled rings	-		
17	On/C 1	-		
18	On/C 2	-		

			161-255 =Min to max speed, Opening effect	
19	Random pixels1	-	0-63 =STOP 64-158 =Max to min speed, Instant-on +fade out.	0-255→ select random distribution from 2 up to 20 fixtures
20	Random pixels2	-	159-160 =STOP. 161-255 =Min to max speed. Fadein+Fadeout	0-255→ select pixel density
21	Rainbow1 (variable speed)	-	0-63 =Angle 0-360°, static. 64-158 =Max to min speed, c.cw rotation 159-160 =STOP 161-255 =Min to max speed. cw rotation	0-255→ angle offset from 0 to 360°
22	Rainbow2 (Fixed speed with variable color offset)	-	0-63 =STOP 64-158 =C.cw rotation 159-160 =STOP 161-255 =cw rotation The value 64-158 or 161-255 change the rainbow angle	-

23	Fan	-	0-63 =Angle offset.0-360° 64-158 = Max to min speed, C.cw rotation 159-160 =STOP 161-255 =Min to max speed, Cw rotationt	0-255→angle offset from 0 to 360°
24	Bar1	-		
25	Half moon	-		
26	Triangle	-		
27	Segment1	-		
28	Arc 1	-		
29	Arc 2	-		
30	Bar 2	-	0-63 =STOP, indexed speed 64-158 =Max to min speed, C.cw rotation. 159-160 =STOP. 161-255 =Min to max speed cc rotation.	0-255→select shape width
31	Random explosion	-		0-255→select random distributi
32	Segment2	-		See 30
33	x Bump	-		0-255→select macro offset
34	Image	-		
35	Bumping section	-		0-255→select shape width
36	Ramp by6	-		
37	Ramp by4	-		
38	Lef/Right scrolling bar	-		
39	Up/Down scrolling bar	-		
40	Bar 3	-		0-255→select macro offset
41	Vertical arc 1	-		
42	Vertical arc 2	-		
43	Horizontal	-		

	arc 1			
44	Horizontal arc 2	-		
45	Mirrored pixel	-		
46	Pixel animation1	-		
47	Pixel animation2	-		
48	Pixel animation3	-		
49	Pixel animation4	-		
50	Pixel animation5	-		
51	Semi arc	-		
52	Bumping arc section	-		
53	Pixel animation6	-		0-255→ select shape width
54	Vertical ramp by2	-		
55	Following pixel by2	-		0-255→ select macro offset
56	Syncopatio n	-		
57	Bumping 1	-		
58	Bumping 2	-		
59	Bumping 3	-		
60	Vertical pixel scrolling	-		0-255→ select macro width

61	Random vertical section	-		0-255→ select random distribution
62	Random central section	-		
63	Random ring 2	-		
64	Random ring 3	-		
65	Random ring1+3			
66	Random ring2+3	-		
67	Single pixel ring1	-		0-255 - select the number of rotating
68	Single pixel ring2	-		
69	Single pixel ring3	-		
70	Spiral	-		See 60
71-255	-	-	-	-

Shape Select	Shape Fade	Background Select
0-7	-	-
8	0-15=Snap effect 16-255=Fade effect and gamma selection	0-7=wash 8-23 =Bkgnd rings selection 24-255= wash
9		
10		
11		
12		
13		
14		
15		0-7= wash 8-23 =Bkgnd rings selection 24-255= wash
16		
17		
18		
19		0-7=wash 8-23 =Bkgnd rings selection 24-254= wash All Fixtures: 255=Mirror effect
20		
21		See 8
22		See 8
23		0-7= wash 8-23=Bkgnd rings selection 24-254= wash For all fixtures: -Macro 25,26 255= Mirror Effect with bkgnd color -Macro 27,28,29 255 = Show Alternative Color
24		
25		
26		
27		
28		
29		
30	Linear fade	0-7=wash

31	Linear fade and wake length	8-23=bkgnd rings selection 24-254=wash 255 = Mirror effect with bkgnd color Note: Mirror effect unavailable for macro 31. Macro 67,68,69:the mirror effect is available only for options 1,3,9
32		
33	Linear fade	
34		
35		
36	Linear fade and wake length	
37		
38		
39		
40	Linear fade	
41		
42		
43		
44		
45	Linear fade and wake length	
46		
47		
48		
49		
50		
51		
52	Linear fade	
53		
54	Linear fade and wake length	
55		
56	Linear fade	
57		
58		
59		
60	Linear fade and wake length	
61	Linear fade	
62		

63		
64		
65		
66		
67	Linear fade and wake length	
68		
69		
70	Linear fade and wake length	
71-255	-	

Pixel Engine

Pixel Engine need to be enabled through the **Function** Channel 18 (Value 103-105)

RGB working with **Standard**(22CH), open 18CH(103-105), 23CH is Red LED1, 24CH is Green LED1, 25CH is Blue LED1.....

RGB CH	Value	Function
23	0-255	Red LED1
24	0-255	Green LED1
25	0-255	Blue LED1
.....	0-255	Red LED.....
.....	0-255	Green LED.....
.....	0-255	Blue LED.....
77	0-255	Red LED19
78	0-255	Green LED19
79	0-255	Blue LED19

RGBW working with **Shapes**(36CH), open 18CH(103-105), 37CH is Red LED1, 38CH is Green LED1, 39CH is Blue LED1,40CH is White LED1.....

RGBW CH	Value	Function
37	0-255	Red LED1
38	0-255	Green LED1
39	0-255	Blue LED1
40	0-255	White LED1
.....	0-255	Red LED.....
.....	0-255	Green LED.....
.....	0-255	Blue LED.....
.....	0-255	White LED.....
109	0-255	Red LED19
110	0-255	Green LED19
111	0-255	Blue LED19
112	0-255	White LED19

Macro Color table

DMX Value	Color
0-9	Macro color OFF
10	Red
11	Green
12	Blue
13	Cyan
14	Yellow
15	Magenta
16	White 7000 K
17	White 3700 K
18	White 5000 K
19	Black
20-22	Medium Yellow
23-26	Straw Tint

27-28	Surprise Peach
29	Fire
30	Medium Amber
31	Gold Amber
32-34	Dark Amber
35-44	Sunrise Red
45	Light Pink
46-48	Medium Pink
49-61	Pink Carnation
62-67	Light Lavender
68-77	Lavender
78-88	Sky Blue
89-99	Just Blue
100-109	Dark yellow green
110-111	Spring Yellow
112	Light Amber
113	Straw
114	Deep Amber
115-116	Orange
117	Light Rose
118	English Rose
119	Light Salmon
120	Middle Rose
121-122	Dark Pink
123-124	Magenta
125	Peacock Blue
126	Med Blue Green
127	Steel Blue
128	Light Blue
129-130	Dark Blue
131-133	Leaf Green
134-135	Dark Green

136-137	Mauve
138-141	Bright Pink
142-144	Medium Blue
145	Deep Golden Amber
146	Pale Lavender
147-148	Special lavender
149-150	Primary Green
151-156	Bright Blue
157-161	Apricot
162-167	Pale Gold
168-171	Deep Orange
172-173	Bastard Amber
174	Flame Red
175-178	Daylight Blue
179	Lilac Tint
180-183	Deep lavender
184-190	Dark Steel Blue
191-206	Congo Blue
207	Alice Blue
208	Dirty White
209-255	White

5 FIXED EQUIPMENT

Please keep the equipment far away from the flammable objects like finishing material, etc. keep at least 0.5m distance from the flammable objects.

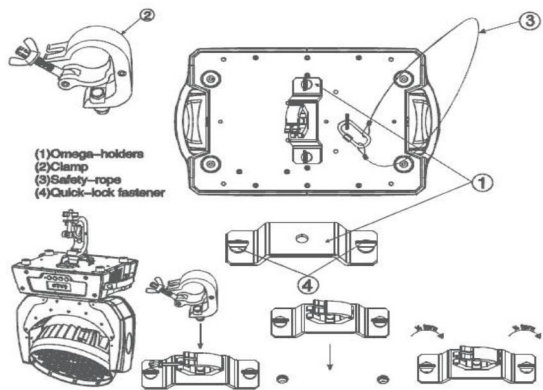
Warning: using two lamp clamps fix the equipment on the bottom of the lamp holder according to the instruction. to make sure the place of install the lamp is safe and suitable ,and the installation point that have chosen is

safety and reliable.

The place of installing the lamp must support the 10 times weight of the lamp itself. And test the pensile place and make sure the place isn't out of the shape.

Must install the second protection when fixing the equipment like proper protective screening. The second protection is used to prevent drop off and lost of lamp and components.

Lamps can directly install the lamp holder , which is shown in the figure:



6 MAIN MACHINE CONNECTION

Please checking the power equipment supported.

Please put the plug of power source wire connect with the main power source .

(EU)Wire	Wire(America)	Direction of wire	General marks
Brown	Black	Live	L
Light blue	White	Neutral	N
Yellow/Green	Green	Earth	



Warranty Card

Name	Model
------	-------

Production	Purchase
------------	----------

End User
Company Name:
Add:

Sale Store
Link man:
Tel: Stamp

Description: These must be truthfully fill, seal by the end-user and point-of-sale, or else the warranty will not work (warranty period and terms, see the following)

warranty period: one year since purchase warranty terms: 1、If fail when using the product in normal state, you can made under the provisions of the warranty, show the warranty card and purchase bills(copy), and enjoy free maintenance service in a specific service center or the manufacturer.

2. The following will be the implementation of paid service:

- (1)Without the effective warranty card
- (2)There's blank, alter and no point-of-sale name
- (3)Fail caused by unresistance
- (4)Fail caused by transportation or unloading
- (5)Fail caused by not operate by manual
- (6)Fail caused by disassemble without unauthorized
- (7)Fail caused by using the unauthorized control system

Note:

Based on our company continue to improve the product, the statement containing data may have changed, and will not notice the change any more. Company retains its right to change specifications related when product is improved. Thanks for your understanding.