

19pcs 4 in 1 LED Par zoom

User Manual



This manual contains important information.
Please read before operating fixture.

1 SECURITY TIPS

WARNING!!! To reduce the risk of fire, electric shock, or injury to persons, follow these important safety instructions:

- non-professionals, not to disassemble the light arbitrarily and lighting accessories inside.
- rated voltage range: AC110V-120V/60Hz or AC200V-240V / 50HZ (to be selected).
- not beam irradiate the flammable materials, flammable materials and the lamp should be maintained at least 1M over the distance.
- lamps used in ambient temperature: -15 °C -40 °C , the highest temperature of the surface of the lamp: 60 °C.
- to keep away from the liquid substance and humid environment.
- before using the lights must ensure the good grounding, can not install charging and remove any parts.
- the installation of lamps, must be fixed screw fasteners with additional security cable and regular inspection.
- lamps consecutive working hours is not recommended more than 10 hours.
- should stop using the lights in time when happens unusual conditions during the process
- lamp parts of the rotation, external accessories and paste parts should be regular inspected, such as the emergence of loose and rock, should be reinforced in a timely manner to prevent the accident.
- lamps adopt strong winds to refrigerate, it is easy to accumulate the dust, so you have to clean it weekly especially the cooling air opening, otherwise the dust will plug leading to poor light

2 TECHNOLOGY REFERENCE

Input Voltage: AC90-260V 50/60Hz

Light Source: 19pcs 15w 4-IN-1 LEDs (R, G, B, W)

Power Consumption:285W

Zoom range:15-60degree

Control mode:DMX512, master-slave, Sound, Auto

Channel: 5 modes: mode1: 32CHs; mode2: 16CHs; mode3:10CHs;
mode4:5CHs; mode5: 32CHs

Life time:60000hours

Net weight:2.8kg

Packing size: 280*280*390mm(1pcs/CTN)

Specification:

With both wash and beam effect, 3 LED zones with individual control of each

Built-in Master/Slave mode to show software

0-100% smoothly dimmer

20t/s strobe effect with variable speed

Low noise and efficient FAN cooling system

IP20 protection rating

3-Pin XLR DMX input/output

The lighting for stage, theatre, TV studio, rental, DISCO and more

3 Board Instruction

ADDRESS	001-512
RUN	DMX512
	Auto1

	Auto2		
	Sound1		
	Sound2		
DMX MODE	Mode1		
	Mode2		
	Mode3		
	Mode4		
	Mode5		
TEST	LED		
SET	Disp.Setting	Shutoff time	02-60m
		Flip display	ON/OFF
		Key lock	On/OFF
		Disp flash	ON/OFF
INFO	Time info	Power on	0001(Hours)
		Ttl Life Hrs	0007(Hours)
		Last Run Hrus	0002(Hours)
	Software V.	V1.00	
MANUAL	Functions	000-255	
	Red	000-255	
	Green	000-255	
	Blue	000-255	
	White	000-255	
	Clours	000-255	
	Zoom	000-255	
	Strobe	000-255	
	Dimmer	000-255	
RESET	All reset	Yes/No	

4 DMX CHANNEL SHEET

Mode/Channel					Value	Function
1	2	3	4	5		
1	1	1	1	1		Special functions
					0-49	Reserved
					50-179	Reserved
					180-189	Zoom Reserved
					190-255	Reserved
-	2	2	-	-	0-255	Red(8 bit)-all zones Red LEDs saturation control (0-100%)
-	3	-	-	-	0-255	Red fine(16 bit) - all zones Fine red LEDs saturation control
-	4	3	-	-	0-255	Green(8 bit)-all zones Green LEDs saturation control (0-100%)
-	5	-	-	-	0-255	Green fine(16 bit) - all zones Fine green LEDs saturation control
-	6	4	-	-	0-255	Blue(8 bit)-all zones Blue LEDs saturation control (0-100%)
-	7	-	-	-	0-255	Blue fine(16 bit) - all zones Fine blue LEDs saturation control
-	8	5	-	-	0-255	White(8 bit)-all zones White LEDs saturation control (0-100%)
-	9	-	-	-	0-255	White fine(16 bit) - all zones Fine White LEDs saturation control
2	-	-	-	9	0-255	Red(8bit)-zone 1 Red LEDs saturation control (0-100%)
3	-	-	-	10	0-255	Red fine (16 bit) - zone 1 Fine red LEDs saturation control
4	-	-	-	11	0-255	Green (8 bit) - zone 1

						Green LEDs saturation control (0-100%)
5	-	-	-	12	0-255	Green fine (16 bit) - zone 1 Fine green LEDs saturation control
6	-	-	-	13	0-255	Blue (8 bit) zone 1 Blue LEDs saturation control (0-100%)
7	-	-	-	14	0-255	Blue (16 bit) zone 1 Fine blue LEDs saturation control)
8	-	-	-	15	0-255	White (8 bit) - zone 1 White LEDs saturation control (0-100%)
9	-	-	-	16	0-255	White (16 bit) - zone 1 Fine white LEDs saturation control
10	-	-	-	17	0-255	Red (8bit) - zone 2 Red LEDs saturation control (0-100%)
11	-	-	-	18	0-255	Red fine (16 bit) - zone 2 Fine red LEDs saturation control)
12	-	-	-	19	0-255	Green (8 bit) - zone 2 Green LEDs saturation control (0-100%)
13	-	-	-	20	0-255	Green fine (16 bit) - zone 2 Fine green LEDs saturation control
14	-	-	-	21	0-255	Blue (8 bit) - zone 2 Blue LEDs saturation control (0-100%)
15	-	-	-	22	0-255	Blue fine (16 bit) - zone 2 Fine blue LEDs saturation control
16	-	-	-	23	0-255	White (8 bit) - zone 2 White LEDs saturation control (0-100%)
17	-	-	-	24	0-255	White (16 bit) - zone 2 Fine white LEDs saturation control
18	-	-	-	25	0-255	Red (8 bit) - zone 3 Red LEDs saturation control (0-100%)
19	-	-	-	26	0-255	Red fine (16 bit) - zone 3 Fine red LEDs saturation control
20	-	-	-	27	0-255	Green (8 bit) - zone 3

						Green LEDs saturation control (0-100%)
21	-	-	-	28	0-255	Green fine (16 bit) - zone 3 Fine green LEDs saturation control
22	-	-	-	29	0-255	Blue (8 bit) zone 3 Blue LEDs saturation control (0-100%)
23	-	-	-	30	0-255	Blue fine (16 bit) zone 3 Fine blue LEDs saturation control
24	-	-	-	31	0-255	White (8 bit) zone 3 White LEDs saturation control (0-100%)
25	-	-	-	32	0-255	White fine (16 bit) zone 3 Fine white LEDs saturation control
26	10	6	-	7		CTC
					0	No function
					1-255	Colour temperature correction from 20000K to 2700K(menu item "Colour Calibration Mode"=Off)
27	11	7	2	8		Virtual Colour Wheel For detailed description see " Virtual colour wheel- colour mixing chart
					0	No function
					1-2	White 2700 K
					3	White 2700 K (Halogen lamp mode*)
					4-5	White 3200 K
					6	White 3200 K (Halogen lamp mode*)
					7-9	White 4200 K
					10-12	White 5600 K
					13-15	White 8000 K
					16	Blue (Blue=full, Red+Green+White=0)
					17-55	Red=0, Green->up,Blue =full, White=0
					56	Light Blue (Red=0, Green=full, Blue =full, White=0)

					57-95	Red=0, Green=full, Blue->down, White=0
					96	Green (Red=0, Green=full, Blue =0, White=0)
					97-134	Red->up, Green=full, Blue=0, White=0
					135	Yellow (Red=full, Green=full, Blue=0, White=0)
					136-174	Red=full, Green->down, Blue=0, White=0
					175	Red(Red=full, Green=0, Blue=0, White=0)
					176-214	Red=full, Green=0, Blue->up, White=0
					215	Magenta (Red=full, Green=0, Blue=full, White=0)
					216-246	Red -> down, Green=0, Blue=full, White=0
					247	Blue (Red=0, Green=0, Blue=full, White=0)
						Speed of the following effects can be controlled by the Shutter/Strobe channel (DMX values of 96-127)
					248	Rainbow effect (with fade time)
					249	Rainbow effect
					250-255	Zone effects
28	12	8	3	2	0-255	Zoom (8 bit) Zoom from min. to max. beam angle
29	13	-	-	3	0-255	Zoom fine (16 bit) Fine zooming from min. to max.
30	14	9	4	4		Shutter/Strobe
					0-31	Shutter closed
					32-63	Strobe effect from slow--> fast (zone 3 only)

					64-95	Strobe effect from slow--> fast (All zones together)
						Set value on Virtual colour wheel
					96-111	Zone effects+rainbow effects speed control, slow--> fast
					112-127	Zone effects+rainbow effects speed control, fast--> slow /opposite direction/
					128-143	Opening pulses in sequences from slow--> fast (All zones together)
					144-159	Closing pulses in sequences from fast--> slow (All zones together)
					160-175	Random strobe effect from slow--> fast (random zone)
					176-191	Random strobe effect from slow--> fast (random zone +random strobe)
					192-223	Random strobe effect from slow --> fast (All zones together)
					224-255	Shutter open
31	15	10	5	5	0-255	Dimmer (8 bit) Dimmer intensity from 0% to 100%
32	16	-	-	6	0-255	Dimmer fine (16 bit) Fine dimming

5 FIXED EQUIPMENT

Please keep the equipment far away from the flammable objects like finishing material, etc. keep at least 0.5m distance from the flammable objects.

Warning: using two lamp clamps fix the equipment on the bottom of the lamp holder according to the instruction. to make sure the place of

install the lamp is safe and suitable ,and the installation point that have chosen is safety and reliable.

The place of installing the lamp must support the 10 times weight of the lamp itself. And test the pensile place and make sure the place isn't out of the shape.

Must install the second protection when fixing the equipment like proper protective screening. The second protection is used to prevent drop off and lost of lamp and components.

Lamps can directly install the lamp holder , which is shown in the

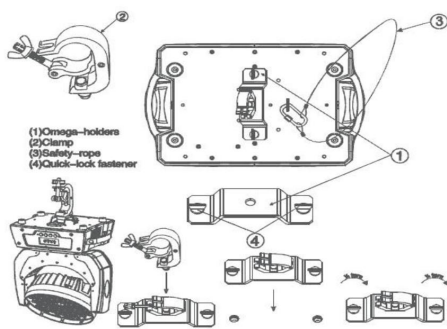



figure:

6 MAIN MACHINE CONNECTION

Please checking the power equipment supported.
Please put the plug of power source wire connect with the main power source .

(EU)Wire	Wire(America)	Direction of wire	General marks
Brown	Black	Live	L
Light blue	White	Neutral	N
Yellow/Green	Green	Earth	



Warranty Card

Name	Model
------	-------

Production	Purchase
------------	----------

End User
Company Name:
Add:

Sale Store	
Link man:	
Tel:	Stamp

Description: These must be truthfully fill, seal by the end-user and point-of-sale, or else the warranty will not work (warranty period and terms, see the following)

warranty period: one year since purchase warranty terms: 1、 If fail when using the product in normal state, you can made under the provisions of the warranty, show the warranty card and purchase bills(copy), and enjoy free maintenance service in a specific service center or the manufacturer.

2. The following will be the implementation of paid service:

- (1)Without the effective warranty card
- (2)There's blank, alter and no point-of-sale name
- (3)Fail caused by unresistance
- (4)Fail caused by transportation or unloading
- (5)Fail caused by not operate by manual
- (6)Fail caused by disassemble without unauthorized
- (7)Fail caused by using the unauthorized control system

Note:

Based on our company continue to improve the product, the statement containing data may have changed, and will not notice the change any more. Company retains its right to change specifications related when product is improved. Thanks for your understanding.