

MODEL : MOC-3900/AK102

List No : 1019-00

# PARTS LIST

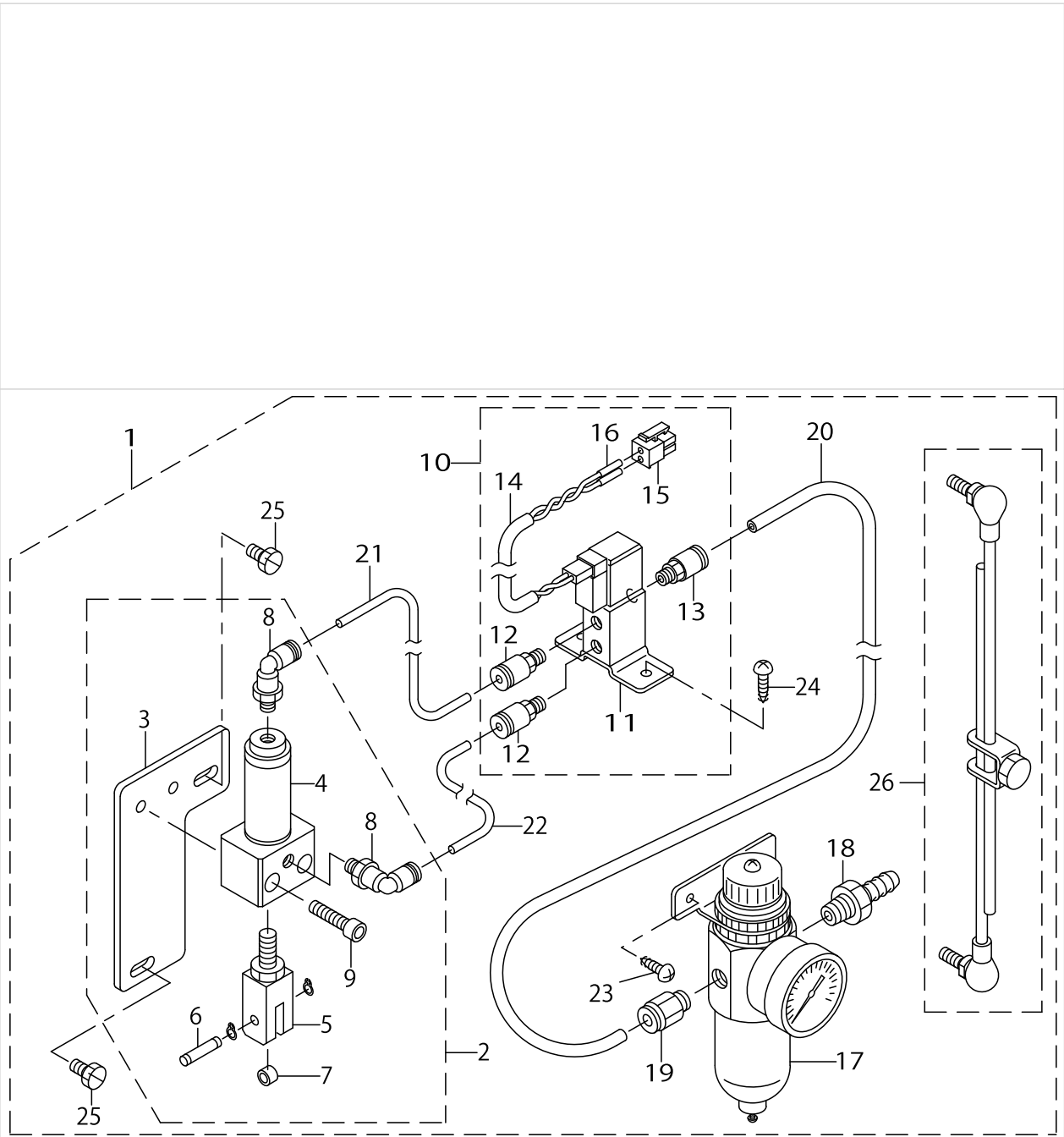
Published:05/12/2017

## CONTENTS

---

COMPONENTS .....	1
HOW TO MAKE USE OF THIS PARTS LIST .....	3

COMPONENTS



COMPONENTS

No.	Supply Code	Parts No.	Replacement	Parts name	Remarks	Choice	Step	Level	Cons	Qty	Rep. QTY
1		GAKA02000A0		AK102 ASM.						1	
2		GAKA02010A0		CYLINDER ASM.				*		1	
3		GBT01083000		CYLINDER PLATE				*		1	
4		PA2002512B0		AIR CYLINDER				*		1	
5		GBT01084000		KNUCKLE				*		1	
6		GBT01085000		KNUCKLE PIN				*		1	
7		GBT01086000		KNUCKLE ROLLER				*		1	
8		PJ304045104		ELBOW				*		2	
9		SM6062502TP		SCREW M6 L=25				*		2	
10		GAKA01020A0		SOLENOID VALVE ASM.				*		1	
11		PV150518100		SOLENOID VALVE				*		1	
12		PJ301040504		JOINTING				*		2	
13		PJ301060501		UNION				*		1	
14		E8760452F00		TUBE				*		0.5	
15		HK034610020		2-POLE NYLON PLUG				*		1	
16		HK034640000		PIN SHAP TERMINAL				*		2	
17		PF0552010B0		COMBINATION FR UNIT ASM.				*		1	
18		F1021003000		HOSE JOINT				*		1	
19		GAS12063000		MALE CONNECTOR				*		1	
20		BT0600401EB		TUBE				*		1	
21		BT0400251EB		URETHANE HOSE, BLACK				*		0.8	
22		BT0400251EB		URETHANE HOSE, BLACK				*		0.8	
23		GMD01080000		SCREW M5 L=10				*		2	
24	R	SK3412000SC	SK3412000SE	WOOD SCREW D=4.1 L=20				*		2	1.00
25		SS9151120CP		SCREW 15/64-28L=11				*		2	
26	R	D7114555BAB	22958458	CONNECTING ROD ASM. (B)				*		1	1.00

## HOW TO MAKE USE OF THIS PARTS LIST

1.As to "#01" and "#02" refer to the "Note" given at the bottom of the respective pages.

2.Codes on the "Qty" column

- Each numeral indicates the number of parts required.
- "0.1" and "2.5" indicate the length (in meters) of the respective parts.

3.Parentheses mean that the corresponding part is a subpart that constructs an assembly part.

4.Dotted lines on the Figures indicate assembly parts.

1. リストページの# 0 1、# 0 2の印は、ページ下の"注記"の説明を参照下さい。
2. 数量欄の数字は、個数を表し、0. 1、2. 5等の数値は、長さ（単位メートル）を表します。
3. 数量欄の（ ）は、組部品を構成している子部品であることを意味します。
4. イラストページの-----枠は、組構成であることを意味します。

## NUMERICAL INDEX OF PARTS

PART NO	PAGE	REF NO.
BT0400251EB	2	22
BT0600401EB	2	20
D7114555BAB	2	26
E8760452F00	2	14
F1021003000	2	18
GAKA01020A0	2	10
GAKA02000A0	2	1
GAKA02010A0	2	2
GAS12063000	2	19
GBT01083000	2	3
GBT01084000	2	5
GBT01085000	2	6
GBT01086000	2	7
GMD01080000	2	23
HK034610020	2	15
HK034640000	2	16
PA2002512B0	2	4
PF0552010B0	2	17
PJ301040504	2	12
PJ301060501	2	13
PJ304045104	2	8
PV150518100	2	11
SK3412000SC	2	24
SM6062502TP	2	9
SS9151120CP	2	25