

MODEL : DDL-5600NL/DDL-5600NU/DDL-5600NJ/DDL-5600NR

List No : 0884-07

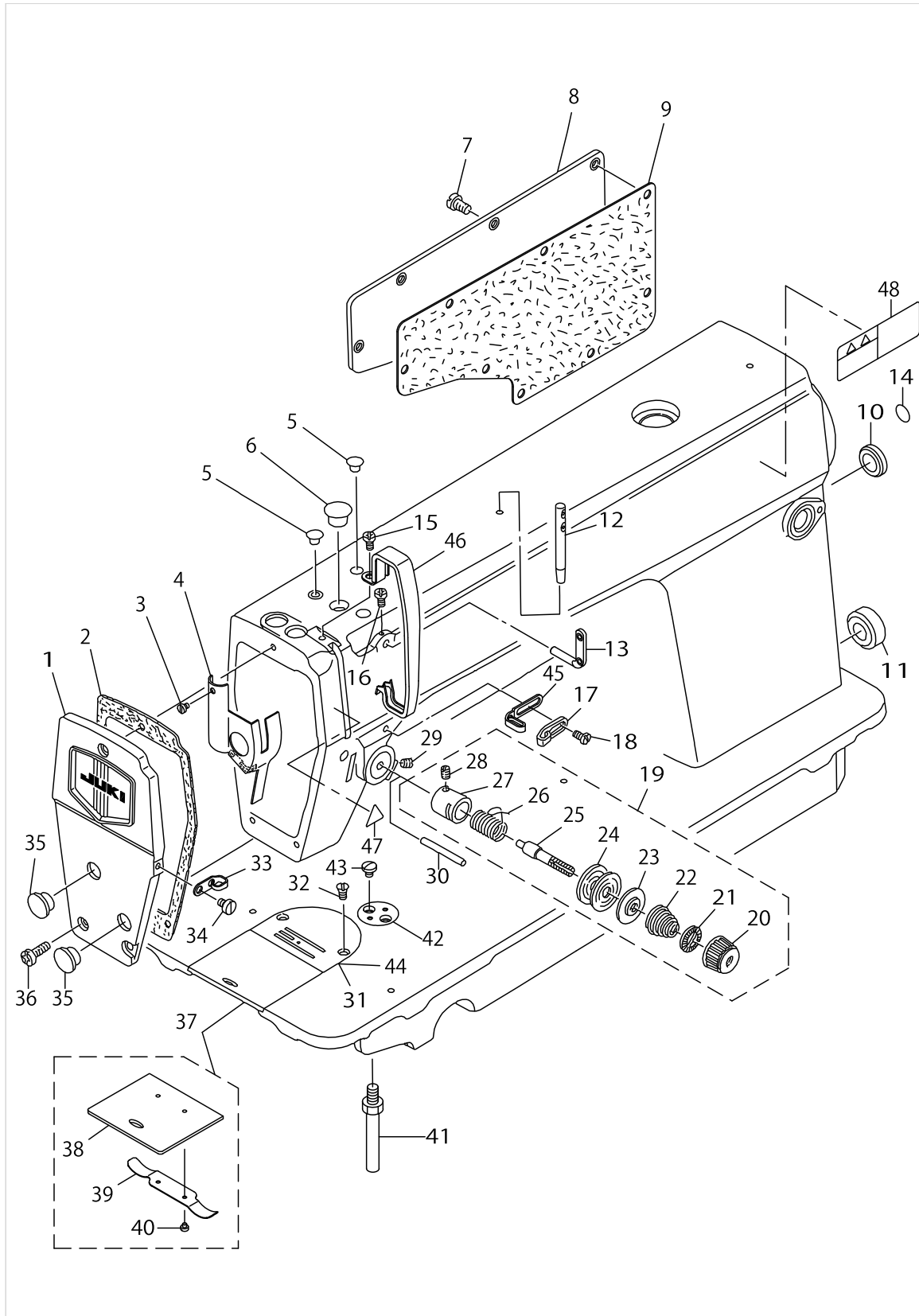
PARTS LIST

Published:05/12/2017

CONTENTS

MACHINE FRAME & MISCELLANEOUS COVER COMPONENTS	1
MAIN SHAFT & THREAD TAKE-UP LEVER COMPONENTS	5
NEEDLE BAR, UPRIGHT SHAFT & HOOK DRIVING SHAFT COMPONENTS	7
HAND LIFTER COMPONENTS	9
FEED MECHANISM COMPONENTS.....	11
OIL LUBRICATION COMPONENTS	15
OIL RESERVOIR COMPONENTS	17
BELT COVER & BOBBIN WINDER COMPONENTS	19
THREAD STAND COMPONENTS.....	21
EXCLUSIVE PARTS FOR DDL-5600NR.....	23
EXCLUSIVE PARTS FOR DDL-5600NJ	25
LIST FOR INFORMATION OF CHANGE (1).....	27
LIST FOR INFORMATION OF CHANGE (2).....	28
HOW TO MAKE USE OF THIS PARTS LIST	29

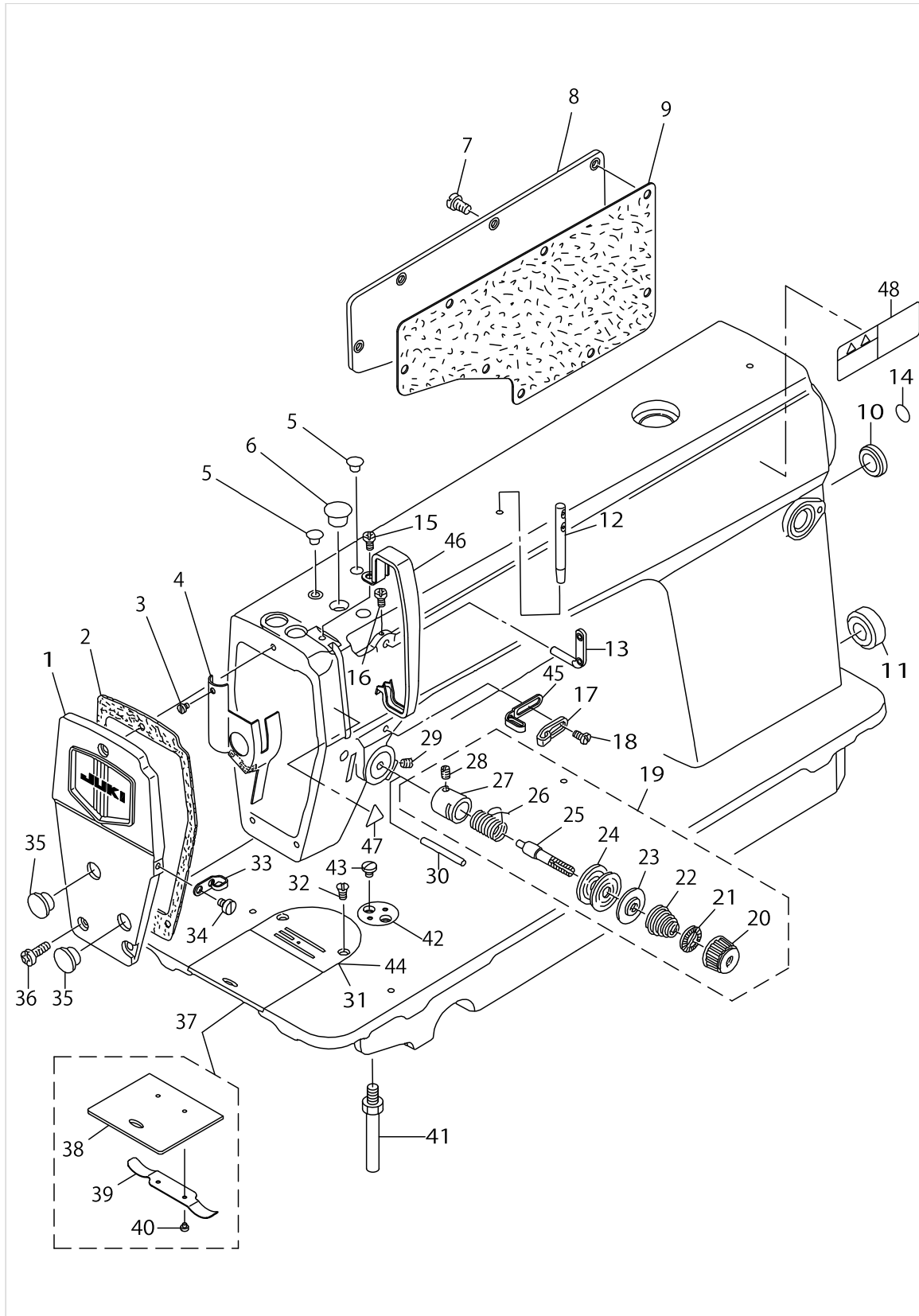
MACHINE FRAME & MISCELLANEOUS COVER COMPONENTS



MACHINE FRAME & MISCELLANEOUS COVER COMPONENTS

No.	Supply Code	Parts No.	Replacement	Parts name	Remarks	Choice	Step	Level	Cons	Qty	Rep. QTY
1		11070851		FACE PLATE ASM.						1	
2		11000304		FACE PLATE GASKET						1	
3		SS6080320SP		SCREW 1/8-44 L= 2.5						1	
4		40021790		FACE PLATE OIL SHIELD ASM						1	
5		TA0850604R0		RUBBER PLUG						2	
6		TA1250705R0		RUBBER PLUG						1	
7		SS4120915SP		SCREW 3/16-28 L=9						8	
8		22900401		WINDOW PLATE						1	
9		11003308		GASKET						1	
10		TA2000502R0		RUBBER PLUG						1	
11		TA2101002R0		RUBBER PLUG						1	
12		22958300		NEEDLE THREAD GUIDE PIN						1	
13		22920706		TWO EYELET						1	
14	R	10004109	22901805	GROUND MARK						1	1.00
15		SS4120615SP		SCREW 3/16-28 L=6						1	
16		SS4120615SP		SCREW 3/16-28 L=6						1	
17		11091006		ARM THREAD GUIDE (HA)	EXCEPT D-DL-5600NU					1	
18		22921001		SCREW						1	
19		22962054		THREAD TENSION ASM.						1	
20		22921308		THREAD TENSION NUT				*		1	
21		22921407		ROTATION STOPPER				*		1	
22	R	22962005	B3114232000	THREAD TENSION SPRING				*		1	1.00
23		22921803		DISK STOPPER				*		1	
24		22921506		THREAD TENSION DISK				*		2	
25		22921209		THREAD TENSION POST				*		1	
26		22921605		THREAD TAKE-UP SPRING				*		1	
27		22945307		THREAD TENSION POST BASE				*		1	
28		SS8090670SP		SCREW 9/64-40 L= 5.5				*		1	
29		SS8150710TP		SCREW 15/64-28 L=7						1	
30		22920904		PIN						1	
31		D1109555E0L		THROAT PLATE						1	
32		SS2110920TP		SCREW 11/64-40 L=8.5						2	
33		22920607		ARMTHREADGUIDEB						1	
34		SS6110610TP		SCREW 11/64-40 L=6						1	
35		TA1250406R0		RUBBER PLUG D=12.5 L=4						2	
36		SS4120915SP		SCREW 3/16-28 L=9						3	
37		22901250		SLIDE PLATE ASM.						1	
38	R	22901201	22901250	SLIDE PLATE				*		1	1.00
39		22901300		SLIDE PLATE SPRING				*		1	
40		SS6060210SP		SCREW 3/32-56 L= 1.9				*		2	
41		22901003		BED SCREW STUD						4	
42		22902605		RULER STOP SEAT						1	
43		SS7110540SP		SCREW 11/64-40 L=5						2	
44		D1109560E0B		THROAT PLATE	FOR DDL-5600NU					1	
45		D1126560E00A		ARMTHREADGUIDEA	FOR DDL-5600NU					1	

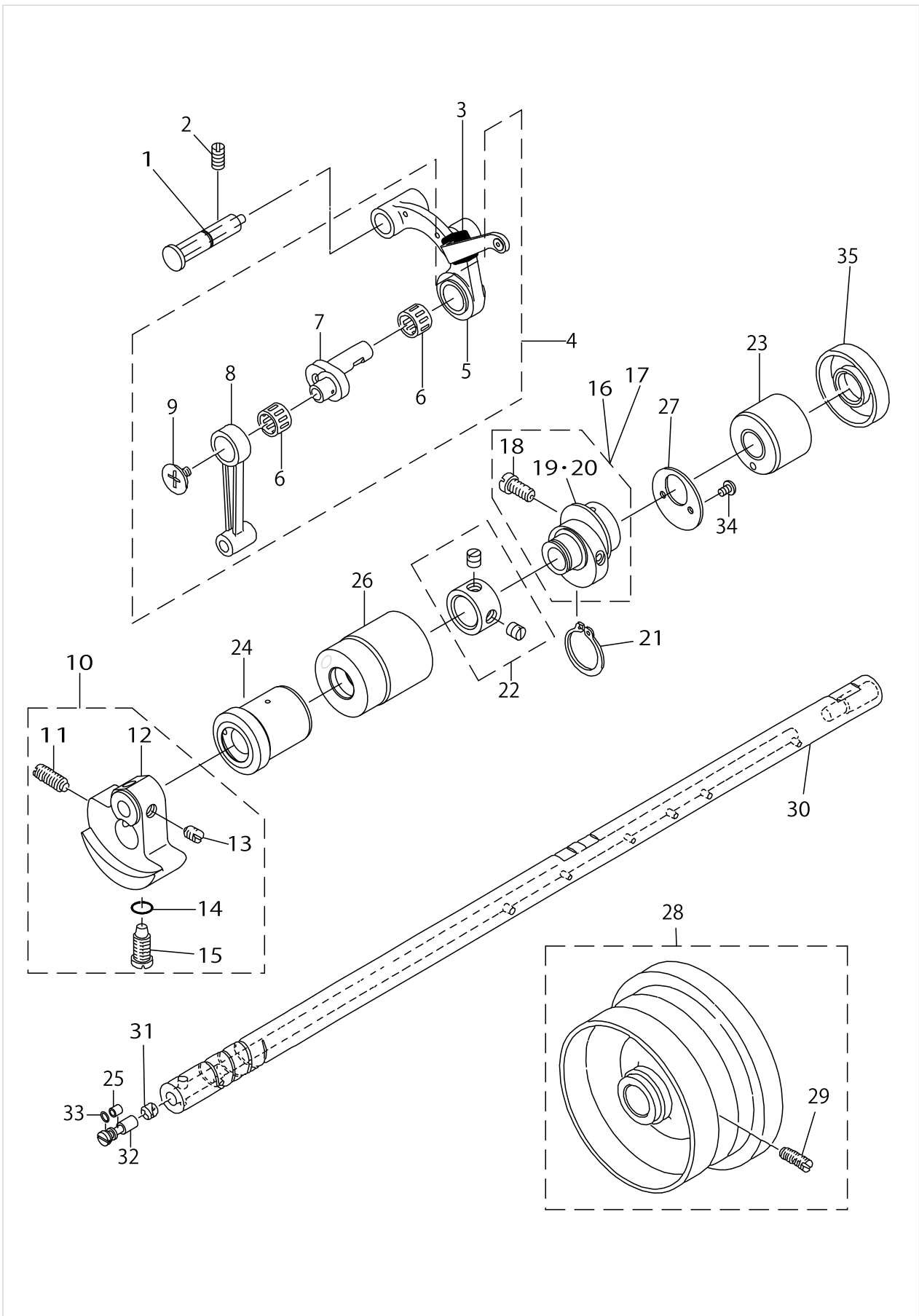
MACHINE FRAME & MISCELLANEOUS COVER COMPONENTS



MACHINE FRAME & MISCELLANEOUS COVER COMPONENTS

No.	Supply Code	Parts No.	Replacement	Parts name	Remarks	Choice	Step	Level	Cons	Qty	Rep. QTY
46		11415205		THREAD TAKE-UP LEVER COVER(JE)						1	
47		CM300200001		ATTENTION SEAL						1	
48		CM301300001		SAFETY LABEL						1	

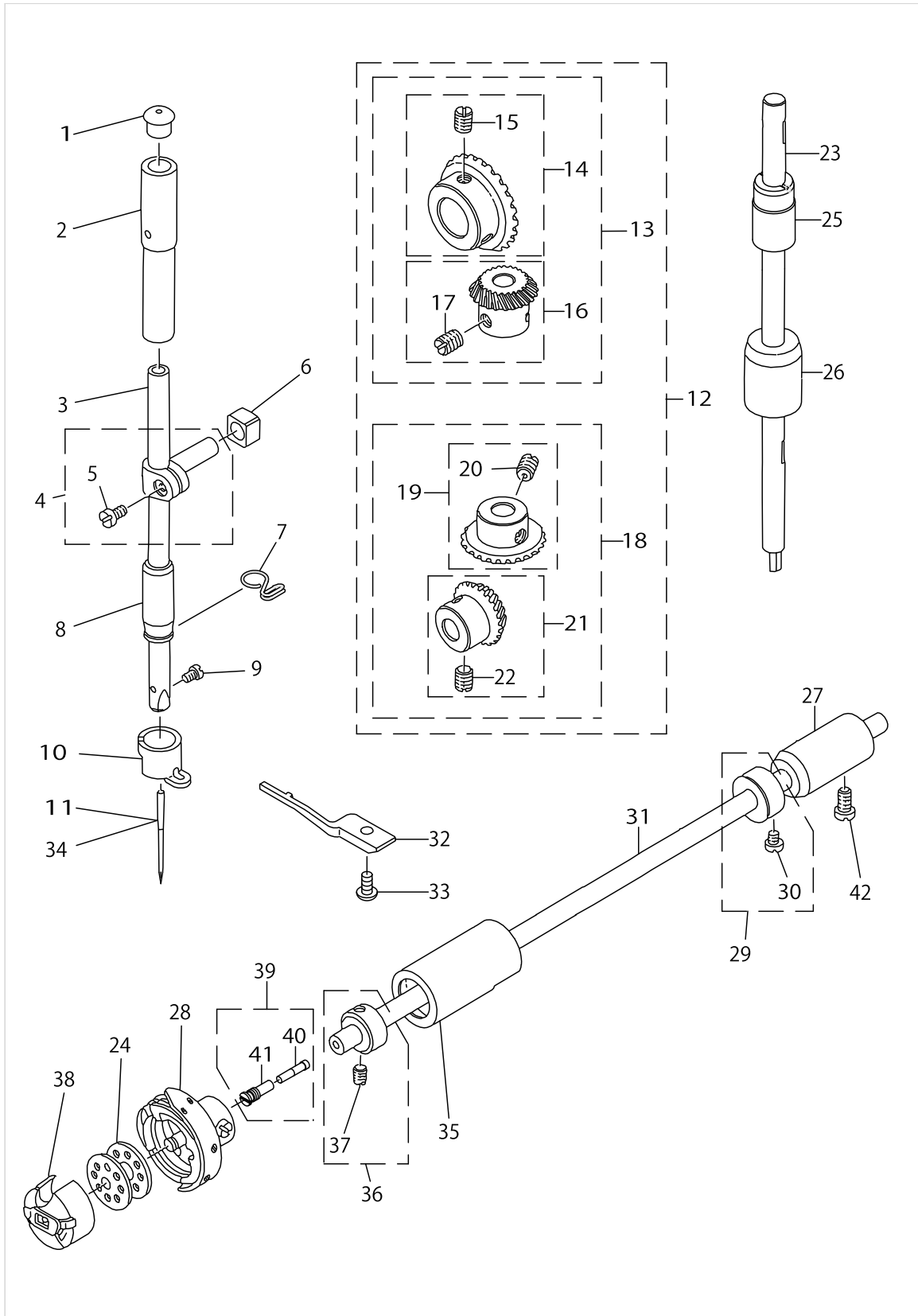
MAIN SHAFT & THREAD TAKE-UP LEVER COMPONENTS



MAIN SHAFT & THREAD TAKE-UP LEVER COMPONENTS

No.	Supply Code	Parts No.	Replacement	Parts name	Remarks	Choice	Step	Level	Cons	Qty	Rep. QTY
1		11017357		THREAD TAKE-UP CRANK SHAFT ASM						1	
2		SS8151150TP		SCREW 15/64-28 L=10.5						1	
3		22919203		OIL PROTECTING RUBBER						1	
4		11403979		THREAD TAKE-UP LEVER ASM.						1	
5	R	11403961	11403979	THREAD TAKE-UP LEVER ASM.				*		1	1.00
6		B1905541B00		NEEDLE BEARING	SELECTIVE PART			*		2	
7	R	11091600	40109126	NEEDLEBARCRANKH				*		1	1.00
8	R	B1408552000	22906606	NEEDLE BAR CRANK ROD				*		1	1.00
9		B1903552000		LEFT SCREW				*		1	
10		40057179		COUNTER WEIGHT ASM.						1	
11		SS8681650TP		SCREW 9/32-28 L=16				*		1	
12		40057178		COUNTER WEIGHT				*		1	
13		SS8660610TP		SCREW 1/4-40 L=6				*		2	
14		RO044240100		RUBBER RING				*		1	
15		SS7681650TP		SCREW 9/32-28 L=16				*		1	
16		22970552		FEED ECCENTRIC CAM ASM.	EXCEPT D-DL-5600NU					1	
17		11403151		FEED CAM ASM.,U	FOR DDL-5600NU					1	
18		SS6661110SP		SCREW 1/4-40 L=11				*		2	
19		22970503		FEED ECCENTRIC CAM L	EXCEPT D-DL-5600NU			*		1	
20		11403102		FEED LIFTING ECCENTRIC CAM U	FOR DDL-5600NU			*		1	
21		RC1850001KP		SNAP RING 18.5						1	
22		22904155		MAIN SHAFT THRU-ST COLLAR ASM.						1	
23		11002409		MAIN SHAFT BUSHING, REAR						1	
24		22903207		MAIN SHAFT BUSHING, FRONT						1	
25		B1215552000		OIL ADJUSTING COLLAR						1	
26		22903306		BUSHING,INTERMEDIATE						1	
27		11402401		THRUST COLLAR						1	
28		11071362		FLYWHEEL ASM.						1	
29		SS8151550SP		SCREW15/64-28L=15				*		2	
30		22903009		MAIN SHAFT						1	
31		11002904		ROLLER FELT						1	
32		B1213552000A		OIL ADJUSTING PIN						1	
33		RO029180100		RUBBER RING						1	
34		SS4090615SP		SCREW 9/64-40 L=6						2	
35	R	11002508	40105231	OIL SEAL						1	1.00

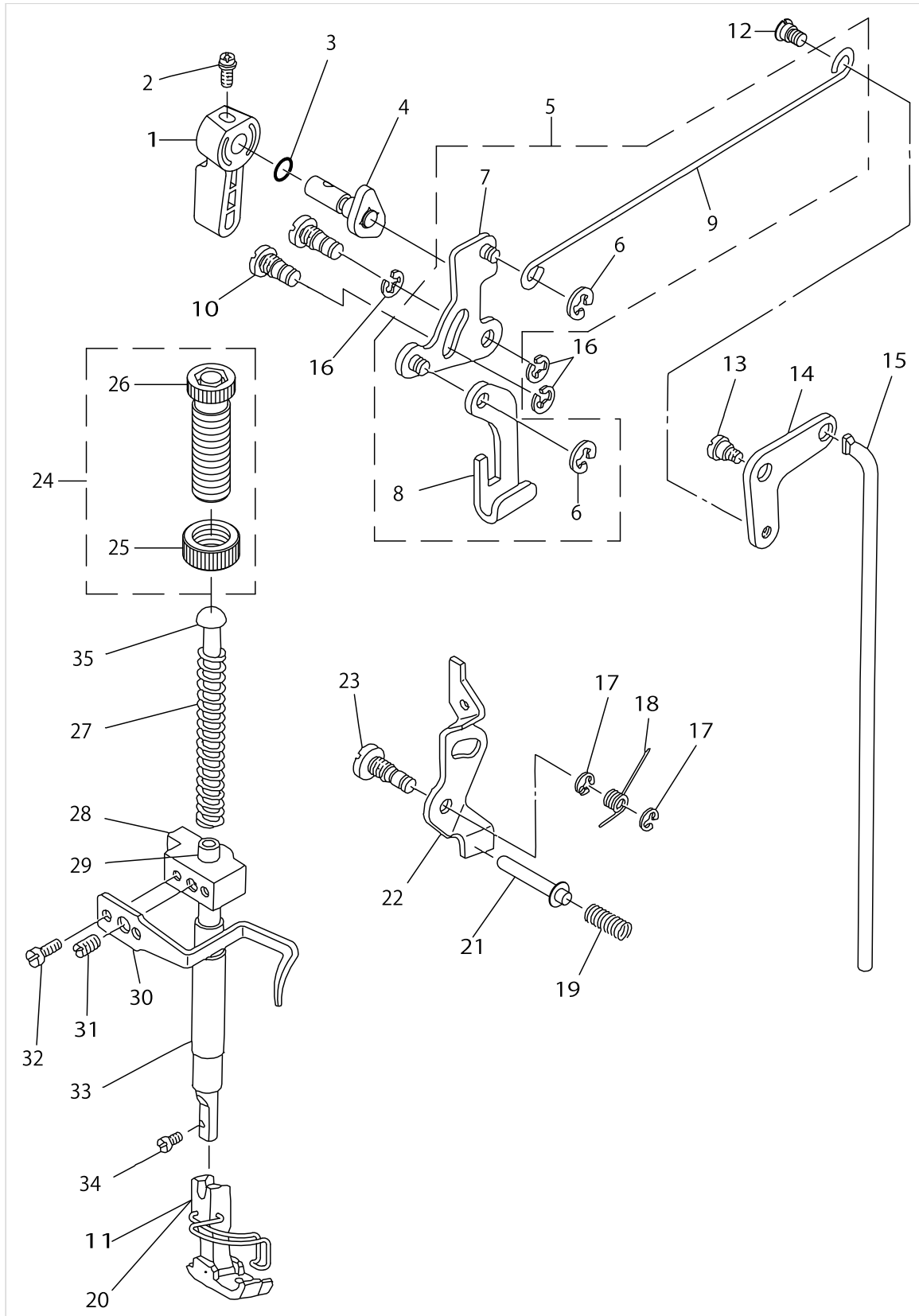
NEEDLE BAR, UPRIGHT SHAFT & HOOK DRIVING SHAFT COMPONENTS



NEEDLE BAR, UPRIGHT SHAFT & HOOK DRIVING SHAFT COMPONENTS

No.	Supply Code	Parts No.	Replacement	Parts name	Remarks	Choice	Step	Level	Cons	Qty	Rep. QTY
1		22901409		NEEDLE BAR UPPER BUSH CAP						1	
2	R	B1402552000A	22906101	NEEDLE BAR BUSHING, UPPER						1	1.00
3		11401809		NEEDLE BAR						1	
4		22906457		NEEDLE BAR HOLDER ASM.						1	
5		SS6090670TP		SCREW 9/64-40 L=6				*		1	
6		B1414555000		SLIDE BLOCK						1	
7		40023223		NEEDLE BAR THREAD GUIDE						1	
8		B1403553000		NEEDLE BAR BUSHING, LOWER						1	
9		SS7080510TP		SCREW 1/8-44 L=4.5						1	
10		40024124		NEEDLE BAR THREAD GUIDE						1	
11		MDB100B2100		NEEDLE DBX1 #21						1	
12	R	B13061550C0	B13071550C0	GEAR & PINION ASM.						1	1.00
13		B13061550B0		GEAR & PINION ASM., UPPER				*		1	
14		B13050120A0		GEAR ASM.				*		1	
15		SS8660810TP		SCREW 1/4-40 L=8				*		2	
16		B13061550A0		PINION ASM.				*		1	
17		SS8660810TP		SCREW 1/4-40 L=8				*		2	
18		B13071550B0		GEAR & PINION ASM., LOWER				*		1	
19		B13071550A0		GEAR ASM. LARGE				*		1	
20		SS8660810TP		SCREW 1/4-40 L=8				*		2	
21		B13081550A0		PINION ASM.				*		1	
22		SS8660810TP		SCREW 1/4-40 L=8				*		2	
23	D	11401403		UPRIGHT SHAFT						1	
24		40021610		BOBBIN						1	
25		22905103		UPRIGHT SHAFT BUSHING, UPPER						1	
26		11004207		UPRIGHT SHAFT BUSHING, LOWER						1	
27		22916308		HOOK DRIVING SH- AFT BUSH, REAR						1	
28		B18302010A0		HOOK ASM.						1	
29		CS079101ASH		THRUST COLLAR A- SM. D=7.94 W=10						1	
30		SS6110420TP		SCREW 11/64-40 L=4.8				*		2	
31		11403300		HOOK DRIVING SHAFT						1	
32	R	40021622	40102871	BOBBIN CASE POSI- TIONING FINGER						1	1.00
33		SS4110915TP		SCREW 11/64-40 L=9						1	
34	D	MC200501400		NEEDLE 134 140	FOR JE					1	
35		40021613		HOOK DRIVING SH- AFT BUSH . FRON						1	
36		CS079073ASH		THRUST COLLAR ASM.						1	
37		SS8110410TP		SCREW 11/64-40 L= 3.5				*		2	
38		B18372010A0		BOBBIN CASE ASM.						1	
39		11404753		OIL SEAL SCREW						1	
40		11404704		OIL WICK				*		1	
41		22916506		SET SCREW				*		1	
42		SS4120915SP		SCREW 3/16-28 L=9						1	

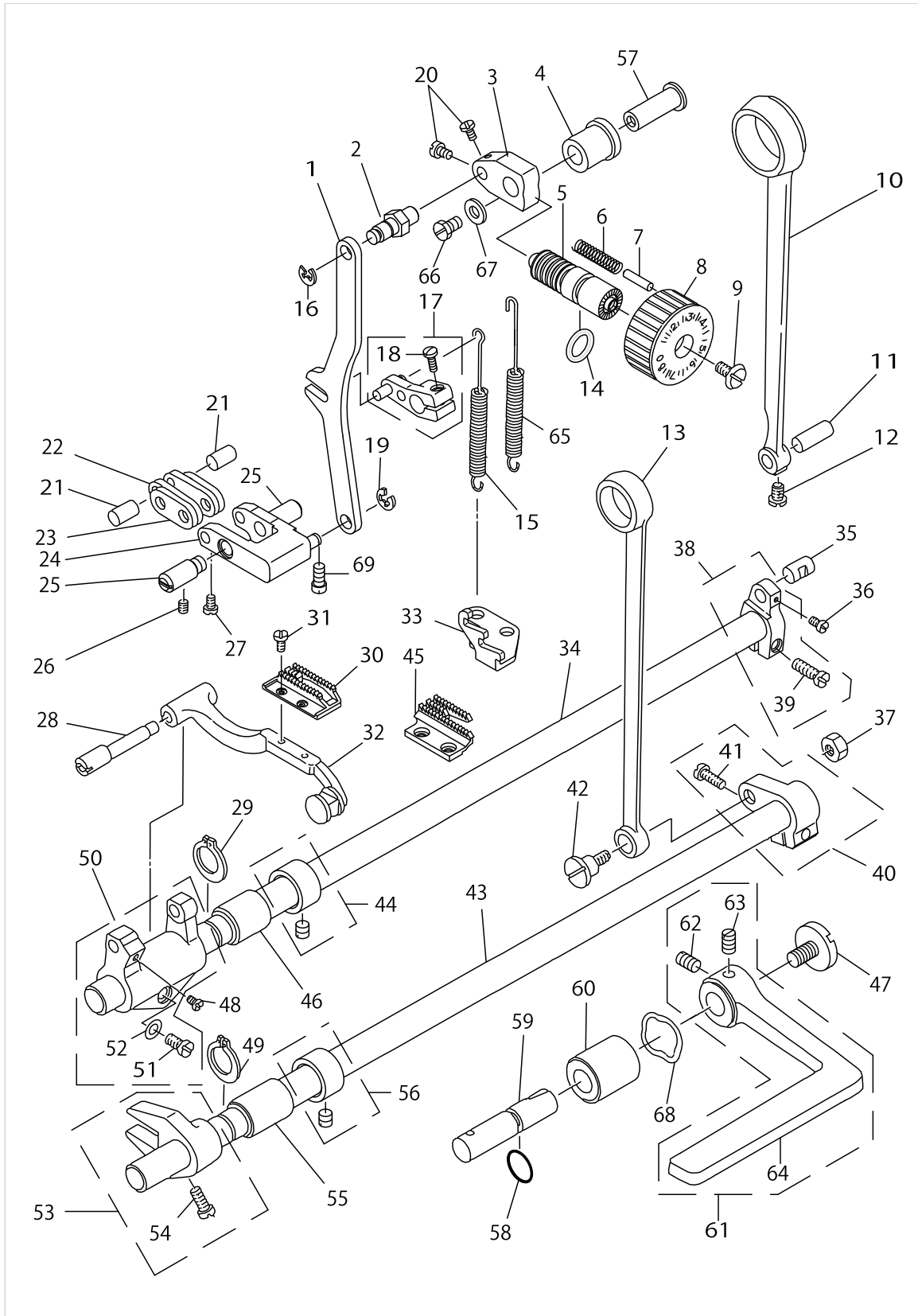
HAND LIFTER COMPONENTS



HAND LIFTER COMPONENTS

No.	Supply Code	Parts No.	Replacement	Parts name	Remarks	Choice	Step	Level	Cons	Qty	Rep. QTY
1		22907802		HAND LIFTER						1	
2		B1521555000		SCREW						1	
3		RO037180100		RUBBER RING						1	
4		22908552		HAND LIFTER CAM ASM.						1	
5		22908354		KNEE LIFTING CROSS ROD ASM.						1	
6		RE0500000K0		E-RING				*		2	
7	R	22908156	22908354	LIFTING LINK ASM.				*		1	1.00
8	R	22908008	22908354	LIFTING LEVER		A	DDL-5550 5550N 555- ON-7 5556- N-7 5600NL-7	*		1	1.00
8	R	22908008	23609357	LIFTING LEVER		B	DDL-9000A 9000B	*		1	1.00
8	R	22908008	40057398	LIFTING LEVER		C	LH-3500	*		1	1.00
8	R	22908008	40174387	LIFTING LEVER		D	DDL-9000C	*		1	1.00
9		22908305		KNEE LIFTER SIDE ROD				*		1	
10		22908701		LINK SHAFT						2	
11	R	D1524555EBL	D1524555ECL	PRESSER FOOT ASM.						1	1.00
12		22908909		HINGE SCREW						1	
13		SD0720331SP		HINGE SCREW D= 7.24 H= 3.3						1	
14		22908800		KNEE LIFTER LINK						1	
15		22909006		KNEE LIFTER CONNECTING ROD						1	
16		RE0500000K0		E-RING						3	
17		RE0500000K0		E-RING						2	
18	R	11018207	22920201	TENSION RELEASE RETURN SPRING						1	1.00
19		22920409		THREAD RELEASE PIN SPRING						1	
20		D1524560EBB		PRESSER FOOT ASM.	FOR DDL-5600NU					1	
21		22920300		THREAD RELEASE SUPPORTING PIN						1	
22		22920003		THREAD RELEASE PLATE						1	
23		22920102		THREAD RELEASE SHAFT						1	
24		22907554		PRESSER SPRING REG NUT ASM.						1	
25	R	22907604	22907554	PRESSER SPRING REGULATOR NUT				*		1	1.00
26	R	22907505	22907554	PRESSER SPRING REGULATOR				*		1	1.00
27		11401502		BUTTON CLAMP P- RESSURE SPRING						1	
28	R	11006004	22907208	PRESSER BAR GUIDE BRACKET						1	1.00
29		40017805		PRESSER BAR						1	
30		22907307		THREAD GUIDE						1	
31		SS8660810TP		SCREW 1/4-40 L=8						1	
32		SS6090910SP		SCREW 9/64-40 L=9						2	
33		40060989		PRESSER BAR BUSHING LOWER						1	
34		SS7091110TP		SCREW 9/64-40 L=10.5						1	
35		22907703		PRESSER GUIDE BAR						1	

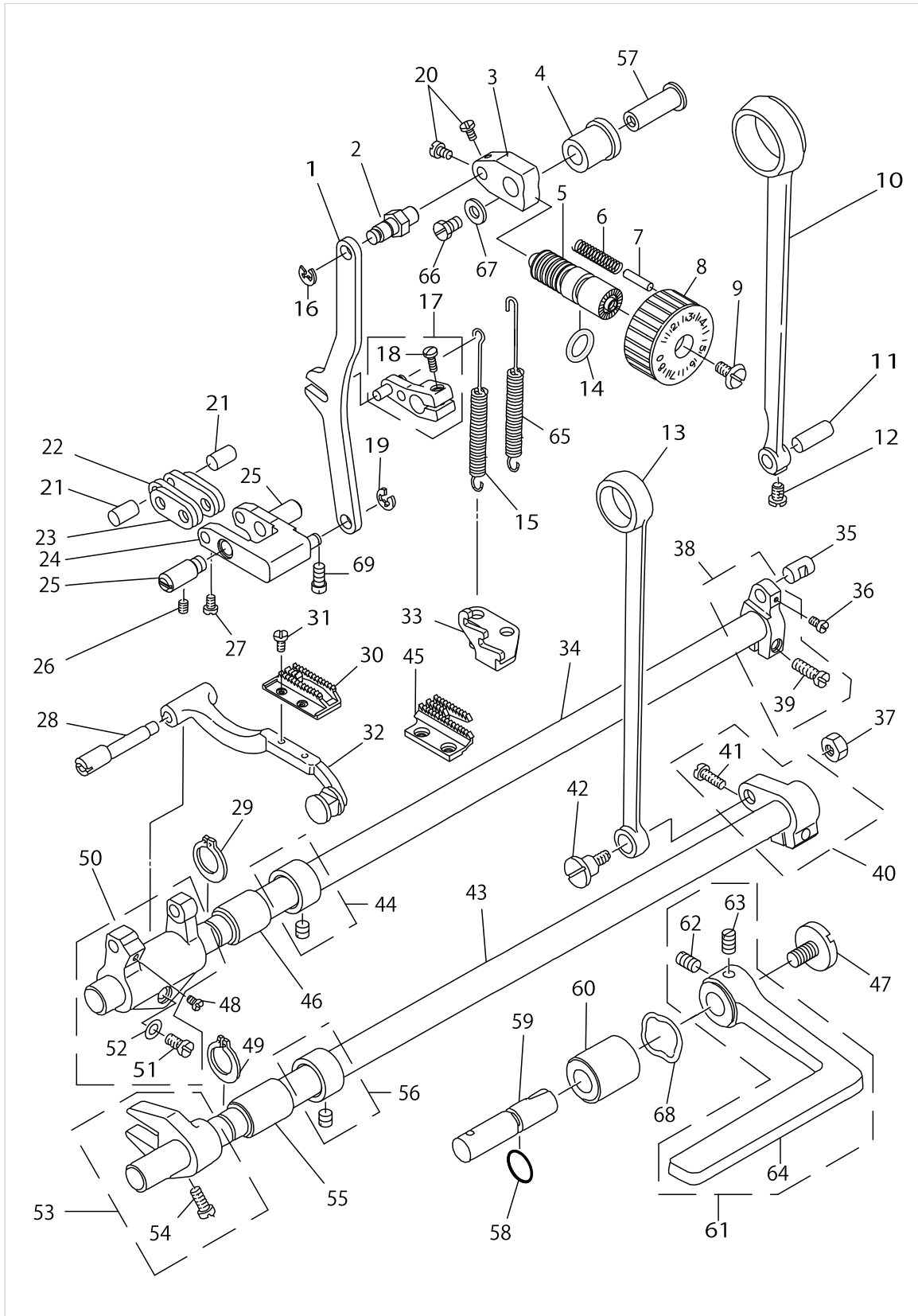
FEED MECHANISM COMPONENTS



FEED MECHANISM COMPONENTS

No.	Supply Code	Parts No.	Replacement	Parts name	Remarks	Choice	Step	Level	Cons	Qty	Rep. QTY
1	R	11302106	22971105	FEED ADJUST ROD						1	1.00
2		22971204		FEED REGULATOR BASE PIN						1	
3		11402716		FEED REGULATOR						1	
4		22911705		FEED REGULATOR BUSHING						1	
5		22911804		FEED REGULATOR SCREW						1	
6		22912109		FEED REGULATOR PIN SPRING						1	
7		22912000		FEED REGULATOR PIN						1	
8		11402203		FEED DIAL						1	
9		SS6121860SP		SCREW 3/16-28 L=18						1	
10	R	11402500	22970750	ROCKER SHAFT CO- NNECTING ROD						1	1.00
11		22911101		WALKING FOOT PIN C						1	
12		SS6090620TP		SCREW						1	
13	R	11014008	22915003	CONNECTING ROD						1	1.00
14		RO092270200		RUBBER RING						1	
15		11305000		SPRING						1	
16		RE0500000K0		E-RING						1	
17		22971550		FEED LEVER ARM ASM.						1	
18		SS7121410TP		SCREW 3/16-28 L=14				*		1	
19		RE0500000K0		E-RING						1	
20		SS6090560TP		SCREW 9/64-40 L=4.5						2	
21		22910905		WALKING FOOT PIN A						2	
22	R	11303005	22910707	CONNECTING LINK, B						2	1.00
23	R	11302908	22910608	CONNECTING LINK, A						2	1.00
24		11303161		FEED ADJUST LINK ASM.						1	
25		22910806		ADJUST LINK FULCRUM SHAFT A						2	
26		SS8150710TP		SCREW 15/64-28 L=7						2	
27		SS6090620TP		SCREW						2	
28		22940803		FEED BAR SHAFT						1	
29		RC0150001KP		RETAINING RING 13.8						1	
30		D1613560E0A		FEED DOG						1	
31		SS4080620TP		SCREW 1/8-44 L=6						2	
32		22940753		FEED BAR ASM.						1	
33		22970602		FEED SPRING HOOK						1	
34		22912901		FEED ROCKERSHAFT						1	
35		22911002		WALKING FOOT PIN B						1	
36		SS6090620TP		SCREW						1	
37		NS6680410SP		NUT 9/32-28						1	
38		22970859		HORIZONTAL FEED ARM ASM.						1	
39		SS6121610SP		SCREW 3/16-28 L=15.5				*		1	
40		22915151		FEED ARM COMPL.						1	
41		SS7121610SP		SCREW 3/16-28 L=15.5				*		1	
42		SD1000801SH		HINGE SCREW D=10 H=8						1	
43		22915201		FEED DRIVING SHAFT						1	
44		22904155		MAIN SHAFT THRU- ST COLLAR ASM.						1	
45		D1613560E00		FEED DOG	FOR DDL-5600NU					1	

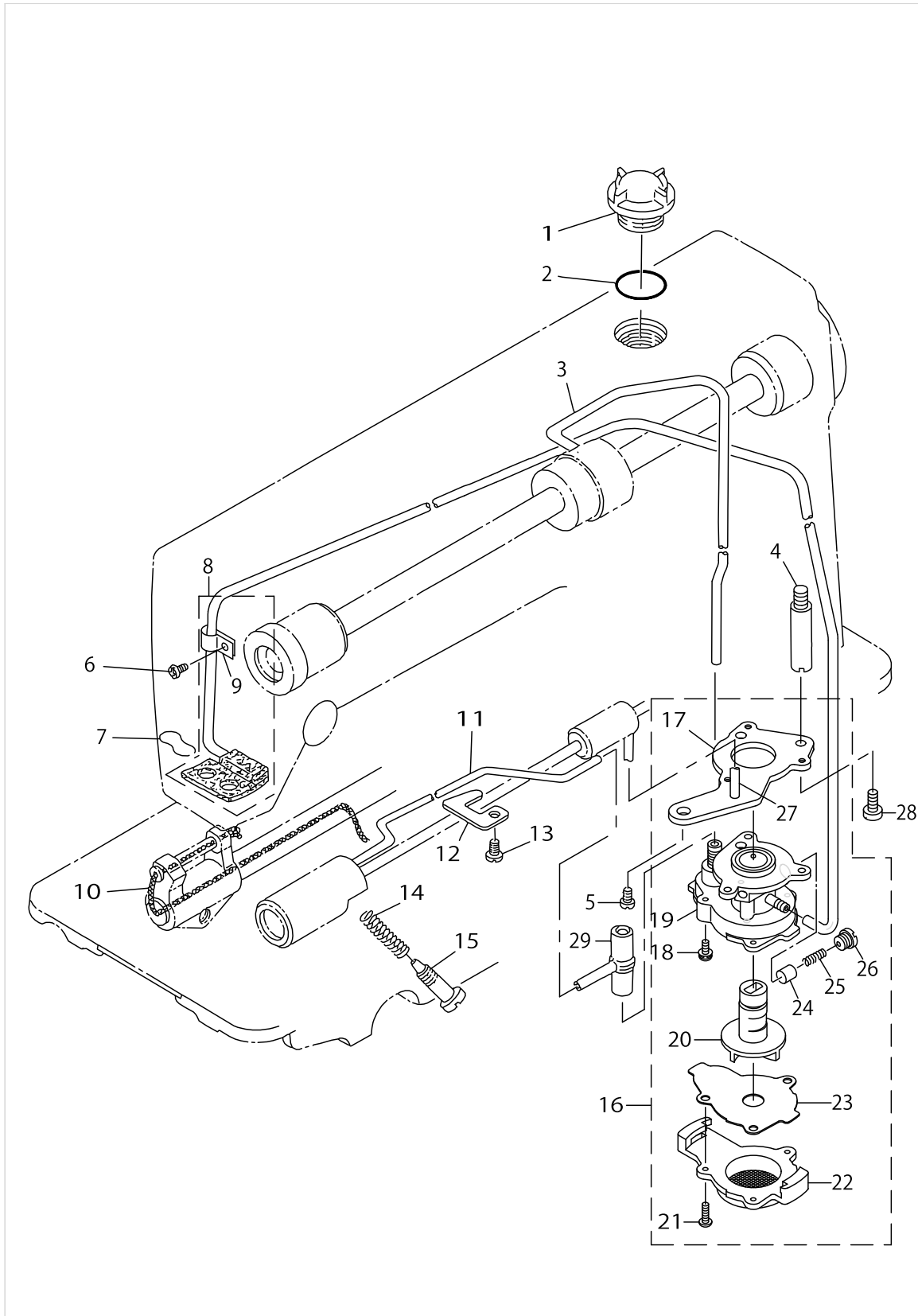
FEED MECHANISM COMPONENTS



FEED MECHANISM COMPONENTS

No.	Supply Code	Parts No.	Replacement	Parts name	Remarks	Choice	Step	Level	Cons	Qty	Rep. QTY
46		22913008		FEED ROCKER SHAFT BUSHING						1	
47		SS7620750SP		SCREW 3/16-32 L=6.5						1	
48		SS7110740TP		SCREW 11/64-40 L=7						1	
49		RC0150001KP		RETAINING RING 13.8						1	
50		22940654		FEED ROCKER ASM.						1	
51		SS7121410TP		SCREW 3/16-28 L=14				*		1	
52		WP0480856SP		WASHER 4.8X8.4X0.8				*		1	
53		22915359		DRIVING SHAFT CRANK ASM.						1	
54	R	SS7111120SP	SS7111120TP	SCREW 11/64-40 L=10.5				*		1	1.00
55		22913008		FEED ROCKER SHAFT BUSHING						1	
56		22904155		MAIN SHAFT THRU-ST COLLAR ASM.						1	
57		11385127		FEED REGULATOR SHAFT						1	
58		RO078190100		RUBBER RING						1	
59		22967202		FEED LEVERSE SHAFT						1	
60	R	11010709	22912802	FEED LEVER METAL						1	1.00
61		22912752		FEED LEVER ASM.						1	
62		SM8061050TP		SCREW				*		1	
63		SM8061010TP		SCREW				*		1	
64	R	22912703	22912752	FEED LEVER				*		1	1.00
65		11302619		SPRING						1	
66		SS9661120CP		SCREW 1/4-40 L=10.5						1	
67		WP0702026SP		WASHER 7X15X2						1	
68		WZ1250300K0		WAVED WASHER 12.5X17X0.3						1	
69		SS6151220SP		SCREW 15/64-28 L=11.5						1	

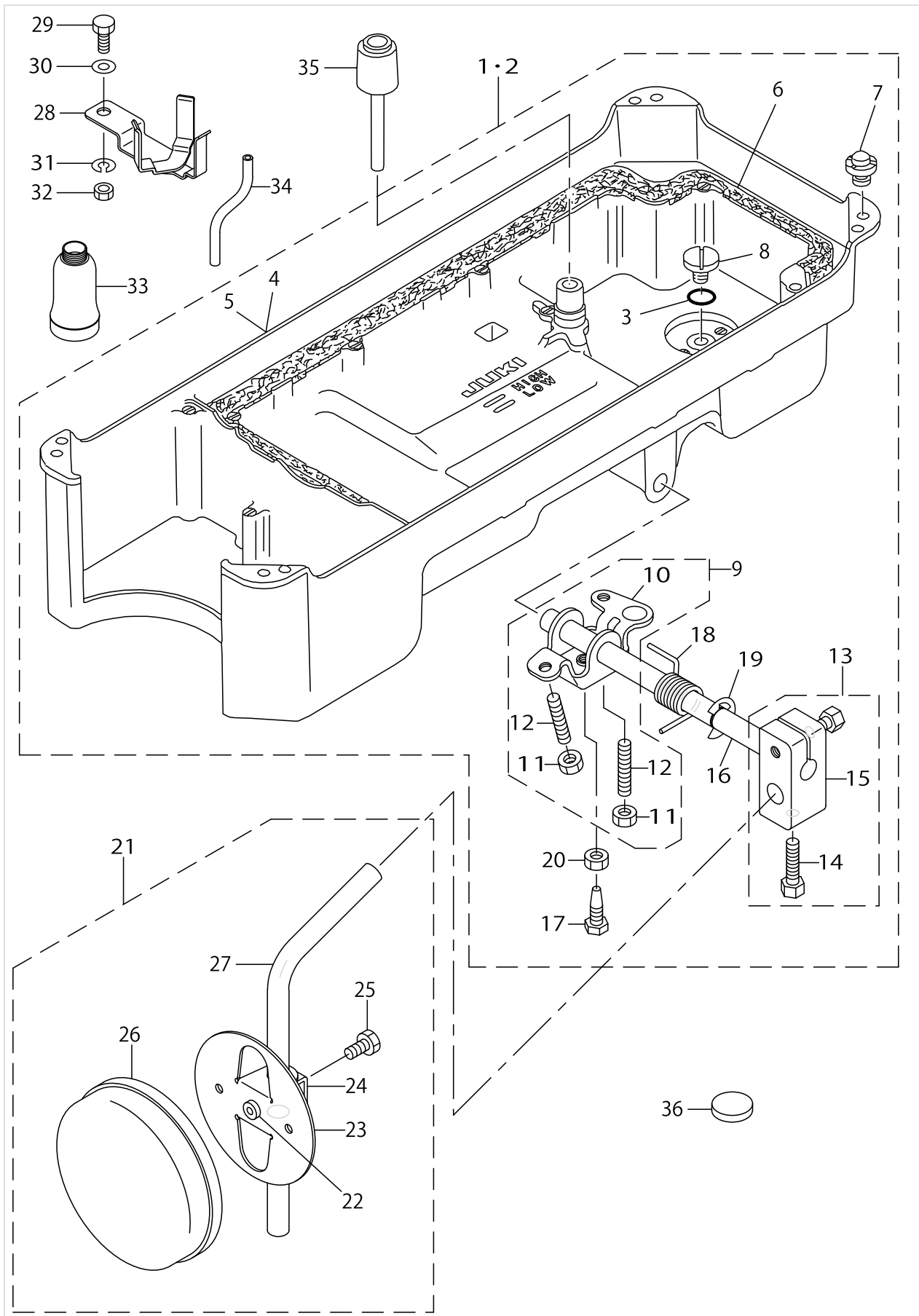
OIL LUBRICATION COMPONENTS



OIL LUBRICATION COMPONENTS

No.	Supply Code	Parts No.	Replacement	Parts name	Remarks	Choice	Step	Level	Cons	Qty	Rep. QTY
1		22924708		OIL SIGHT WINDOW						1	
2		RO195240100		RUBBER RING						1	
3		22924401		MAINSHAFTOILTUBE						1	
4		22924005		PUMP BODY STRUT						1	
5		SS4150915SP		SCREW 15/64-28 L=9						1	
6		SS4120615SP		SCREW 3/16-28 L=6						1	
7		22925101		OIL FELT PRESSER						1	
8		22924153		RETURN PIPE ASM.						1	
9		22924302		RETURN PIPE HOLDER				*		1	
10		CQ252000000		OIL WICK						.3	
11		22924500		HOOK OIL TUBE						1	
12		22924807		PIPEHOLDER,LOWER						1	
13		SS4150915SP		SCREW 15/64-28 L=9						1	
14		22924906		OIL REGULATOR SCREW SPRING						1	
15		22925002		OIL REGULATOR SCREW						1	
16		11404555		LUBRICATING OIL PUMP ASM.						1	
17	R	22923312	11392057	OIL PUMP INSTALLING BASE		A	DLD5430	*		1	1.00
17	R	22923312	11404555	OIL PUMP INSTALLING BASE		B	DDL5600/- 8100e, DU1181	*		1	1.00
17	R	22923312	22923056	OIL PUMP INSTALLING BASE		C	DDL8700/- 8300/8500- /900A, DM- N5420/5400	*		1	1.00
18		SL4030851SF		SCREW M3 L=8				*		3	
19	R	22923015	22923056	OIL PUMP				*		1	1.00
20		22923700		IMPELLER				*		1	
21		SE4301041SR		SCREW D=3 L=10				*		3	
22		22923205		PUMP BODY COVER				*		1	
23		22923809		PUMP BODY SUPPORT PLATE				*		1	
24		22923403		PLUNGER				*		1	
25		22923601		PLUNGER SPRING				*		1	
26		22923502		PLUNGER SCREW				*		1	
27	D	11404605		HOOK DRIVING SHAFT OIL TUBE				*		1	
28		SS6111010TP		SCREW 11/64-40 L= 9.5						1	
29		22924609		RUBBER JOINT						1	

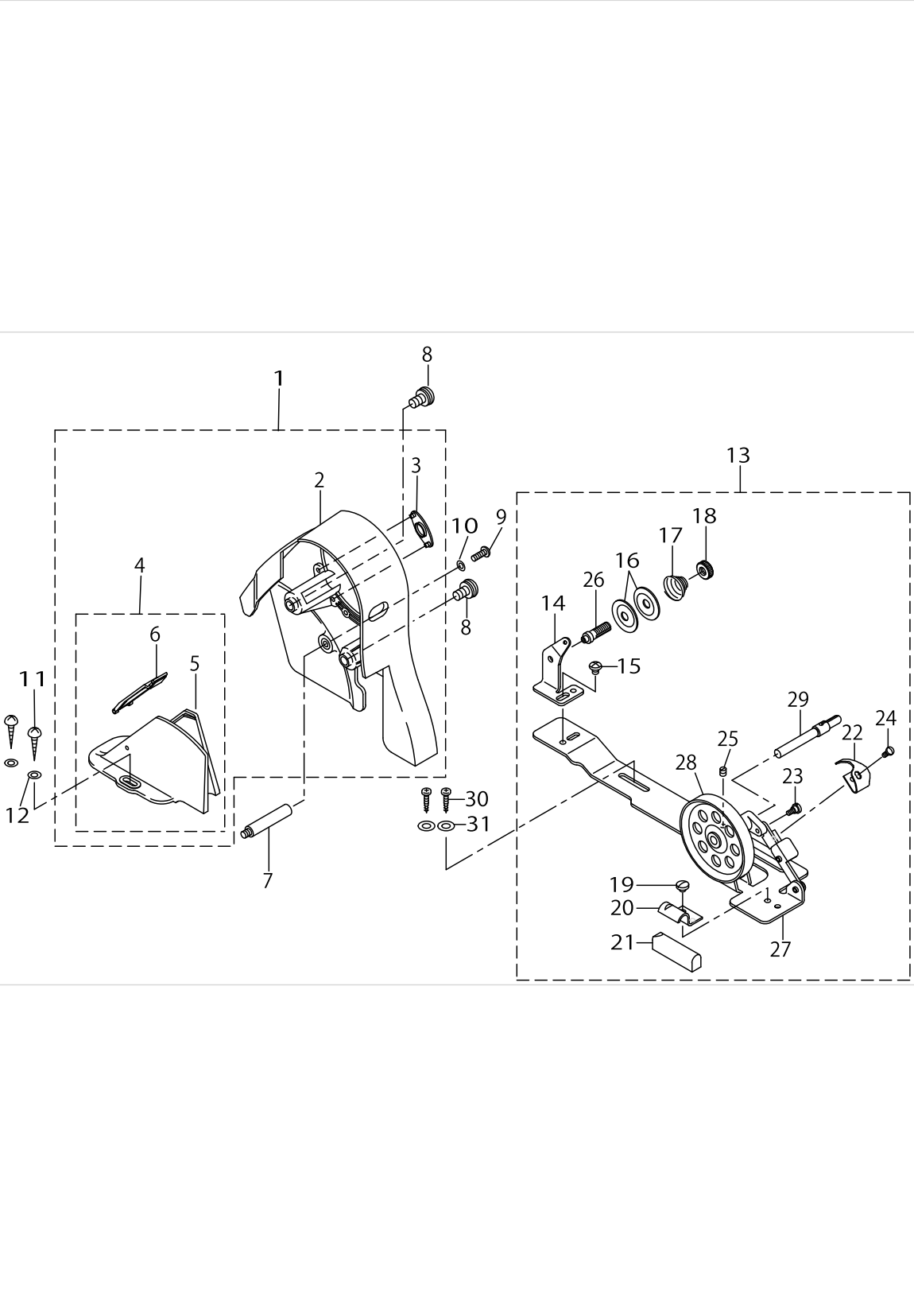
OIL RESERVOIR COMPONENTS



OIL RESERVOIR COMPONENTS

No.	Supply Code	Parts No.	Replacement	Parts name	Remarks	Choice	Step	Level	Cons	Qty	Rep. QTY
1	R	11047057	40102085	OIL RESERVOIR ASM.						1	1.00
2		11142064		OIL RESERVOIR ASM.	FOR DDL-5600NU					1	
3		RO098240100		RUBBER RING				*		1	
4	R	11023017	40102085	OIL RESERVOIR				*		1	1.00
5		11142056		OIL RESERVOIR ASM.	FOR DDL-5600NU			*		1	
6		11024700		GASKET				*		1	
7		11047107		RUBBER CUSHION				*		4	
8		SS6700710SH		SCREW 5/16-24 L=7				*		1	
9		22932156		KNEE LIFTER ROTATION ARM ASM.				*		1	
10	R	22932107	22932156	KNEE LIFTER ROTATION ARM				*		1	1.00
11		NM6060001SE		NUT M6				*		2	
12		SM8063012TR		SCREW M6 L=30				*		2	
13		22932453		BRACKET ASM.				*		1	
14		22934707		SCREW				*		2	
15	R	22932404	22932453	BRACKET				*		1	1.00
16		22932305		KNEE PRESS ROD				*		1	
17		SM9062563TR		SCREW M6 L=25				*		1	
18		22932206		SPRING				*		1	
19		RE1000000K0		E-RING 10				*		1	
20		NM6060001SE		NUT M6				*		1	
21		22934251		KNEE PAD PLATE ASM.						1	
22		22934400		KNEE PAD PLATE RUBBER				*		1	
23		22934202		KNEE PAD PLATE				*		1	
24		22934301		KNEE PAD PLATE SUPPORT				*		1	
25		SM9061203SE		SCREW M6 L=12				*		1	
26		22934509		KNEE PAD PLATE COVER				*		1	
27		22934608		KNEE PAD UPRIGHT SHAFT				*		1	
28		11074408		SUPPORT BASE	FOR DDL-5600NU					1	
29		SM9082023SE		SCREW M8 L=20	FOR DDL-5600NU					1	
30		WP0871602SE		WASHER 8.7X18X1.6	FOR DDL-5600NU					1	
31		WS0861410KR		SPRING WASHER 8.6X15X1.4	FOR DDL-5600NU					1	
32		NM6080721SE		NUT M8	FOR DDL-5600NU					1	
33		B9121012000		OIL CAN	FOR DDL-5600NU					1	
34		BP900000000		VINYL TUBE D=9	FOR DDL-5600NU					.6	
35	R	11024304	22931703	KNEE PRESS LIFTER ROD						1	1.00
36		B8228125000		OIL RESERVOIR MAGNET						1	

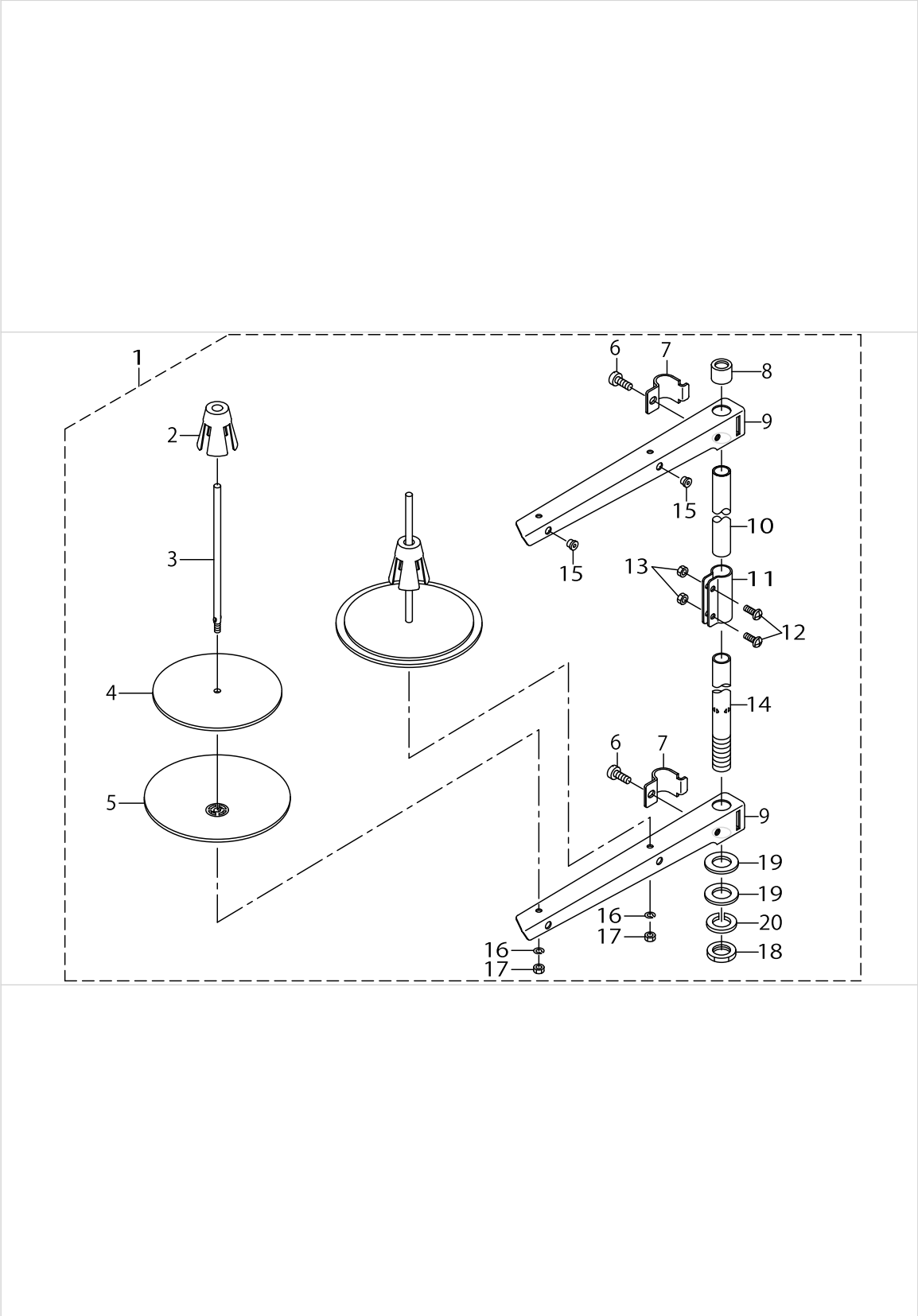
BELT COVER & BOBBIN WINDER COMPONENTS



BELT COVER & BOBBIN WINDER COMPONENTS

No.	Supply Code	Parts No.	Replacement	Parts name	Remarks	Choice	Step	Level	Cons	Qty	Rep. QTY
1	R	11076650	22933451	BELT COVER ASM. (URBANE GREY)						1	1.00
2	R	11076601	22933451	BELT COVER A				*		1	1.00
3	R	11076700	22933451	BELT COVER A CAP				*		1	1.00
4	R	11076858	22933659	BELT COVER B ASM.				*		1	1.00
5	R	11076809	22933659	BELT COVER B				*		1	1.00
6	R	11076957	22933659	BELT COVER B CAP ASM.				*		1	1.00
7	R	11023504	22933907	BELT COVER SUPPORT, A						1	1.00
8		11025202		BELT COVER A SCREW						2	
9		SS4121415SP		SCREW 3/16-28 L=14						1	
10		WP0501016SD		WASHER 5X10.5X1						1	
11	R	SK3412000SC	SK3412000SE	WOOD SCREW D=4.1 L=20						2	1.00
12		WP0450826SC		WASHER 4.5X10X0.8						2	
13		11415866		BOBBIN WINDER COMPL						1	
14	R	22928501	11078250	THREAD TENSION POST BASE				*		1	1.00
15		SS4110515SP		SCREW 11/64-40 L=5				*		1	
16	R	22928907	22921506	THREAD TENSION DISK				*		2	1.00
17		22929004		THREAD TENSION SPRING				*		1	
18		22928808		NUT				*		1	
19		SS4110515SP		SCREW 11/64-40 L=5				*		1	
20	D	22928402		CONTROL RUBBER HOLDING PLATE				*		1	
21		22928303		CONTROL RUBBER				*		1	
22		11415908		POSITIONINGFINGER				*		1	
23		SD0490261SP		HINGE SCREW D=4.9 H=2.6				*		1	
24		SS7081310SP		SCREW 1/8-44 L=12.5				*		1	
25	R	SS8110510SP	SS8110520TP	SCREW 11/64-40 L=5				*		1	1.00
26	R	22928709	11078250	THREAD TENSION POST				*		1	1.00
27	R	22927305	22927354	BOBBIN WINDER BASE				*		1	1.00
28		22927404		BOBBIN WINDER				*		1	
29		22927602		BOBBIN WINDER SPINDLE				*		1	
30	R	SK3412000SC	SK3412000SE	WOOD SCREW D=4.1 L=20						2	1.00
31		WP0450826SC		WASHER 4.5X10X0.8						2	

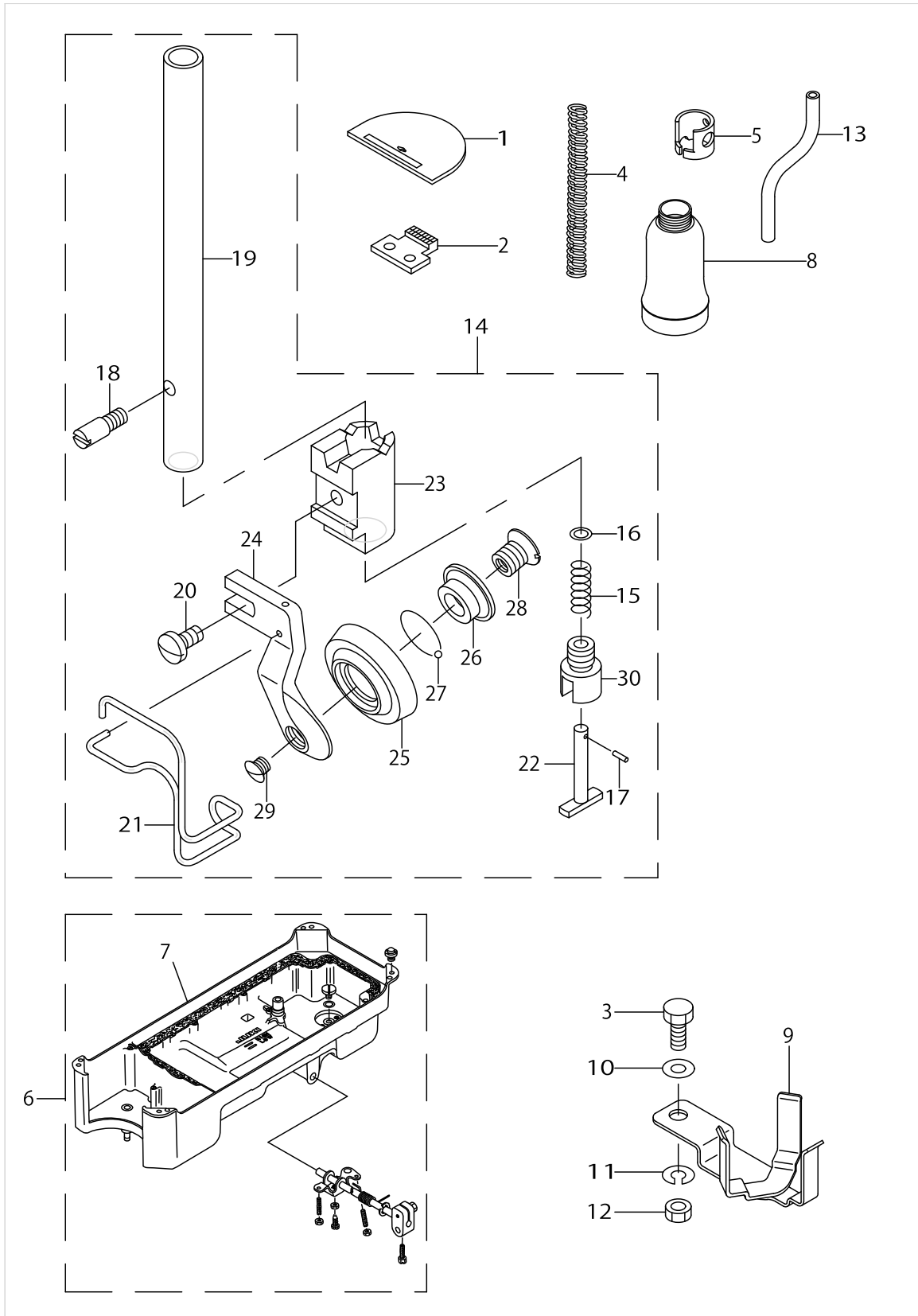
THREAD STAND COMPONENTS



THREAD STAND COMPONENTS

No.	Supply Code	Parts No.	Replacement	Parts name	Remarks	Choice	Step	Level	Cons	Qty	Rep. QTY
1	R	22930358	40096354	THREAD STAND ASM.						1	1.00
2	R	22931109	40085791	SPOOL RETAINER				*		2	1.00
3	R	22931000	40085790	SPOOL PIN				*		2	1.00
4		22930903		SPOOL REST CUSHION				*		2	
5		22930804		SPOOL REST				*		2	
6		SM6061610SC		SCREW M6 L=16				*		2	
7	R	22930705	40096354	THREAD GUIDE ARM JOINT				*		2	1.00
8		22931406		SPOOL REST ROD RUBBER CAP				*		1	
9	R	22930507	40096354	SPOOL REST ARM				*		2	1.00
10	R	22930408	40096354	SPOOL REST ROD, UPPER				*		1	1.00
11	R	22931307	40096354	SPOOL REST ROD JOINT				*		1	1.00
12		SM4051405SE		SCREW M5 L=14				*		2	
13		NM6050001SE		NUT M5				*		2	
14	R	22930309	40096354	SPOOL REST ROD, LOWER				*		1	1.00
15		22931208		THREAD GUIDE				*		2	
16		WS0510002KN		SPRING WASHER				*		2	
17		NM6050001SE		NUT M5				*		2	
18		NM6160511SE		NUT M16X1.5				*		1	
19		WP1612616SE		WASHER 16X30X2.6				*		2	
20	R	WS1643202KR	WP1612616SE	SPRING WASHER		A		*		1	2.00
20	R	WS1643202KR	40085796	SPRING WASHER		A		*		1	2.00

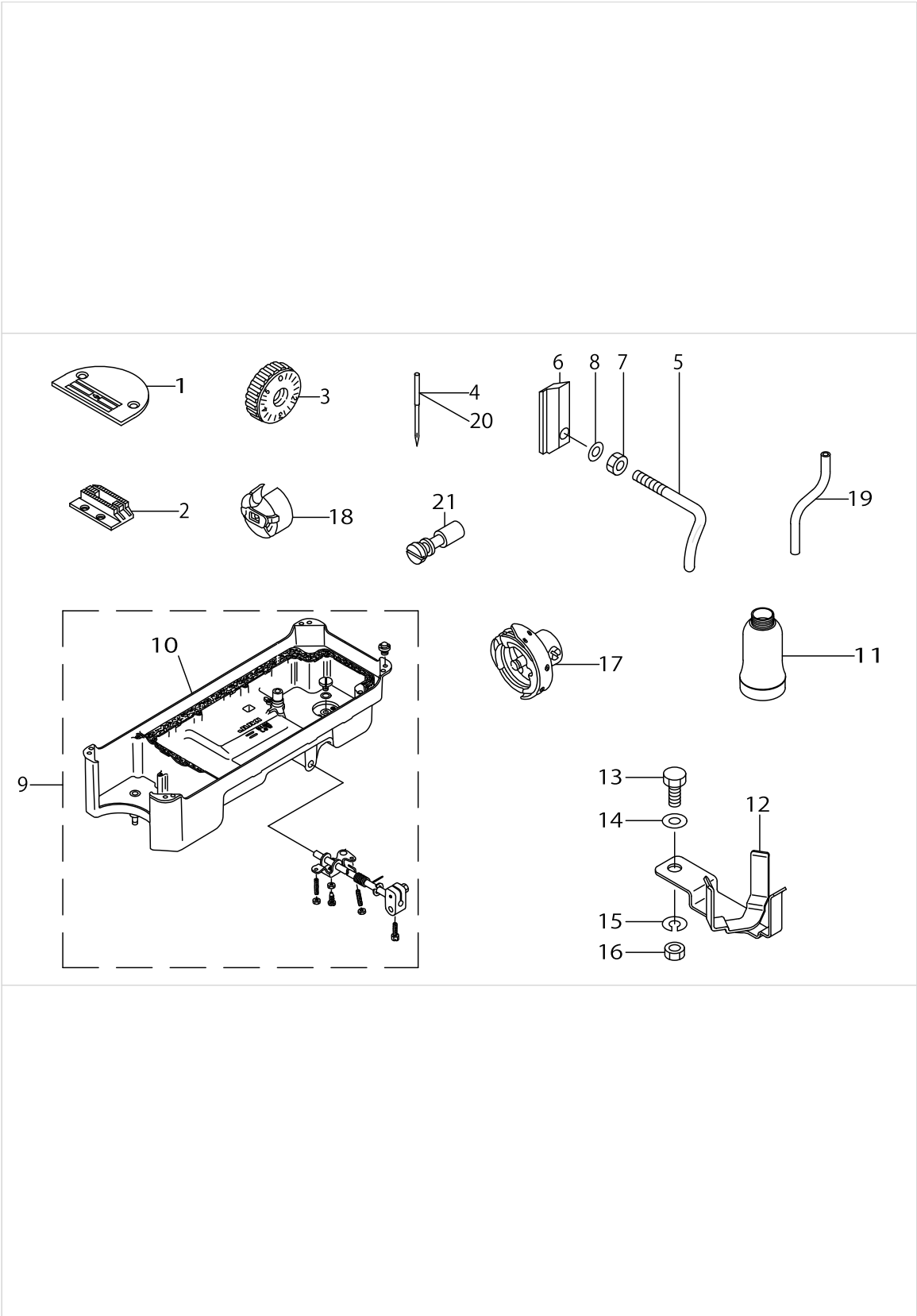
EXCLUSIVE PARTS FOR DDL-5600NR



EXCLUSIVE PARTS FOR DDL-5600NR

No.	Supply Code	Parts No.	Replacement	Parts name	Remarks	Choice	Step	Level	Cons	Qty	Rep. QTY
1		11405800		THROAT PLATE						1	
2		11405701		FEED DOG, R						1	
3		SM9082023SE		SCREW M8 L=20						1	
4		22907406		PRESSER SPRING						1	
5		11401916		NEEDLE BAR THREAD GUIDE U						1	
6		11142064		OIL RESERVOIR ASM.						1	
7		11142056		OIL RESERVOIR ASM.				*		1	
8		B9121012000		OIL CAN						1	
9		11074408		SUPPORT BASE						1	
10		WP0871602SE		WASHER 8.7X18X1.6						1	
11		WS0861410KR		SPRING WASHER 8.6X15X1.4						1	
12		NM6080721SE		NUT M8						1	
13		BP900000000		VINYL TUBE D=9						.6	
14	D	B1524560RB0		ROLLER PRESSER ASM.						1	
15		B1514560R00		SPRING				*		1	
16		B1513560R00		WASHER				*		1	
17		B1512560R00		PIN				*		1	
18	D	B1523560R00		FIXED SCREW				*		1	
19		B1501560R00		PRESSER ROD R				*		1	
20		SS7090710SP		SCREW 9/64-40 L=6.8				*		1	
21	D	B1421560R00		NEEDLE SAFETY COVER				*		1	
22		B1515560R00		SPRING SHAFT				*		1	
23		B1517560R00		ROLLER PRESSER BASE				*		1	
24	R	B1519560R00	B1524560RB0	ROLLER PRESSER				*		1	1.00
25	R	B1522560R00	B1524560RB0	ROLLER				*		1	1.00
26	R	B1521560R00	B1524560RB0	ROLLER BUSH				*		1	1.00
27	R	B1511560R00	B1524560RB0	STEEL BOLL				*		48	1.00
28	R	B1520560R00	B1524560RB0	SCREW				*		1	1.00
29		B1518560R00		SCREW				*		1	
30		B1516560R00		SPRING HOLDER				*		1	

EXCLUSIVE PARTS FOR DDL-5600NJ



EXCLUSIVE PARTS FOR DDL-5600NJ

No.	Supply Code	Parts No.	Replacement	Parts name	Remarks	Choice	Step	Level	Cons	Qty	Rep. QTY
1		11400801		THROAT PLATE J						1	
2		11403003		FEED J						1	
3		11402104		FEED DIAL, J						1	
4		MDB100B2100		NEEDLE DBX1 #21						1	
5	R	11305513	22972608	ARM THREAD GUIDE, C						1	1.00
6		11403805		THREAD GUIDE C FITTING PLATE						1	
7		NS6090310SP		NUT 9/64-40						1	
8		WP0371016SD		WASHER 3.7X8X1						1	
9		11142064		OIL RESERVOIR ASM.						1	
10		11142056		OIL RESERVOIR ASM.				*		1	
11		B9121012000		OIL CAN						1	
12		11074408		SUPPORT BASE						1	
13		SM9082023SE		SCREW M8 L=20						1	
14		WP0871602SE		WASHER 8.7X18X1.6						1	
15		WS0861410KR		SPRING WASHER 8.6X15X1.4						1	
16		NM6080721SE		NUT M8						1	
17		D1830560EA0		HOOK ASM.						1	
18		B1837201SA0		BOBBIN CASE ASM.						1	
19		BP900000000		VINYL TUBE D=9						.6	
20		MC200501300		NEEDLE 134 NM130	FOR JE					1	
21	R	11003001	22903900	OIL AMOUNT ADJUSTING PIN						1	1.00

LIST FOR INFORMATION OF CHANGE (1)

As to the place changed, refer to the corresponding Rev.No.
 When previous parts(Obsoleted part)and new parts(Added parts)are
 not interchangeable with each other:
 In this case,even obsoleted parts(D.)can be ordered with the
 obsoleted part number,so select the parts with changed dates and
 place your orders.

変更箇所は、該当Rev.No.版をご参照ください。
 部品の互換性がない変更の場合は、削除された品番でも、ご注文できます。

29134103
 No.0884-07 Rev.No.

*A:Added parts追加部品/D:Obsoleted parts削除部品/E:Erratum訂正

* Rev. No.	Page 頁	Ref. No.	Parts No. 品番	* Rev. No.	Page 頁	Ref. No.	Parts No. 品番
D 06	2	4	114-00553	A 07	2	4	400-21790
D 06	2	8	110-70901	A 07	2	8	229-00401
D 06	2	18	110-01500	A 07	2	18	229-21001
D 06	2	19	110-73657	A 07	2	19	229-62054
D 06	2	20	110-72204	A 07	2	20	229-21308
D 06	2	21	B3120-125-000	A 07	2	21	229-21407
D 06	2	22	B3114-232-000	A 07	2	22	229-62005
D 06	2	23	B3132-552-000	A 07	2	23	229-21803
D 06	2	24	B3126-012-000	A 07	2	24	229-21506
D 06	2	25	B3115-552-000	A 07	2	25	229-21209
D 06	2	26	B3128-012-000	A 07	2	26	229-21605
D 06	2	27	B3111-552-B00	A 07	2	27	229-45307
D 06	2	46	229-01904	A 07	2	46	114-15205
D 06	2	48	CM-3002000-B1				
D 06	2	49	CM-3002001-01	A 07	2	48	CM-3013000-01
D 06	2	50	CM-3002001-A1				
D 06	4	10	114-01353	A 07	4	10	400-57179
D 06	4	12	114-01312	A 07	4	12	400-57178
D 06	4	16	114-02351	A 07	4	16	229-70552
D 06	4	19	114-02302	A 07	4	19	229-70503
D 06	4	28	110-71354	A 07	4	28	110-71362
D 06	6	4	B1411-552-OA0	A 07	6	4	229-06457
D 06	6	7	B1419-553-000	A 07	6	7	400-23223
D 06	6	8	110-05105	A 07	6	8	B1403-553-000
D 06	6	10	114-01619	A 07	6	10	400-24124
D 06	6	24	B9117-201-000	A 07	6	24	400-21610
D 06	6	27	110-15807	A 07	6	27	229-16308
D 06	6	32	114-03508	A 07	6	32	400-21622
D 06	6	35	114-03409	A 07	6	35	400-21613
D 06	8	10	110-06509	A 07	8	10	229-08701
D 06	8	19	110-18405	A 07	8	19	229-20409
D 06	8	22	110-18009	A 07	8	22	229-20003
D 06	8	23	110-18108	A 07	8	23	229-20102
D 06	8	29	229-07000	A 07	8	29	400-17805
D 06	8	33	D1510-491-D00	A 07	8	33	400-60989
D 06	10	2	113-02817	A 07	10	2	229-71204

LIST FOR INFORMATION OF CHANGE (2)

*	Rev. No.	Page 頁	Ref. No.	Parts No. 品番	*	Rev. No.	Page 頁	Ref. No.	Parts No. 品番
D	06	10	17	113-02254	A	07	10	17	229-71550
D	06	10	33	113-01900	A	07	10	33	229-70602
D	06	10	38	114-02658	A	07	10	38	229-70859
D	06	10	59	110-53105	A	07	10	59	229-67202
D	06	12	1	B3530-555-000	A	07	12	1	229-24708
D	06	12	3	110-21201	A	07	12	3	229-24401
D	06	12	17	110-20302	A	07	12	17	229-23312
D	06	12	19	110-20013	A	07	12	19	229-23015
D	06	12	20	110-20708	A	07	12	20	229-23700
D	06	12	22	110-20203	A	07	12	22	229-23205
D	06	12	23	110-20807	A	07	12	23	229-23809
D	06	12	24	110-20401	A	07	12	24	229-23403
D	06	12	25	110-20609	A	07	12	25	229-23601
D	06	12	26	110-20500	A	07	12	26	229-23502
D	06	14	17	SM-9061853-SR	A	07	14	17	SM-9062563-TR
					A	07	14	20	NM-6060001-SE
D	06	14	20	110-23751	A	07	14	21	229-34251
D	06	14	21	B3419-122-000	A	07	14	27	229-34608
D	06	14	22	110-24403	A	07	14	22	229-34400
D	06	14	23	110-23702	A	07	14	23	229-34202
D	06	14	24	110-23801	A	07	14	24	229-34301
D	06	14	26	B3431-552-000-A	A	07	14	26	229-34509
D	06	14	33	114-10453					
					A	07	14	36	B8228-125-000
D	06	15	14	110-78250	A	07	15	14	229-28501
D	06	15	15	SS-7110840-SP	A	07	15	15	SS4110515-SP
D	06	15	16	B3126-012-000	A	07	15	16	229-28907
D	06	15	17	B3129-012-B00	A	07	15	17	229-29004
D	06	15	18	B3125-012-000	A	07	15	18	229-28808
D	06	15	20	110-78102	A	07	15	20	229-28402
D	06	15	21	B3211-555-000	A	07	15	21	229-28303
D	06	15	25	SM-8040502-TP	A	07	15	25	SS8110510-SP
D	06	15	26	WP-048056-SP					
					A	07	15	26	229-28709
D	06	15	27	110-77500	A	07	15	27	229-27305
D	06	15	28	110-77609	A	07	15	28	229-27404
D	06	15	29	B3204-555-000	A	07	15	29	229-27602
D	06	18	14	114-10560					
D	06	19	21	114-10560					

HOW TO MAKE USE OF THIS PARTS LIST

1.Explanation of codes

1)"*"mark.....means this part is changed from the previous parts book.

As to the details of the change, refer to the "List for information of change".

2)"#01".....refer to "Note" explanation at bottom of page.

2.Codes on the "Qty" column

- Each numeral indicates the number of parts required.
- "0.1" and "2.5" indicate the length (in meters) of the respective parts.

3.Parentheses mean that the corresponding part is a subpart that constructs an assembly part.

4.Dotted lines on the Figures indicate assembly parts.

1."注記"欄の記号説明

1) "*"印.....前回のパーツブックに比較して今回変更された部品を意味します。

変更内容は、"変更情報リスト"を参照してください。

2) "#01".....ページ下の"注記"の説明を参照してください。

2.数量欄の数字は、個数を表し、0.1、2.5等の数値は、長さ（単位メートル）を表します。

3.数量欄の（ ）は、組部品を構成している子部品であることを意味します。

4.イラストページの-----枠は、組構成であることを意味します。

NUMERICAL INDEX OF PARTS

PART NO	PAGE	REF NO.	PART NO	PAGE	REF NO.	PART NO	PAGE	REF NO.
10004109	2	14	11305513	26	5	22907505	10	26
11000304	2	2	11385127	14	57	22907554	10	24
11002409	6	23	11400801	26	1	22907604	10	25
11002508	6	35	11401403	8	23	22907703	10	35
11002904	6	31	11401502	10	27	22907802	10	1
11003001	26	21	11401809	8	3	22908008	10	8
11003308	2	9	11401916	24	5	22908156	10	7
11004207	8	26	11402104	26	3	22908305	10	9
11006004	10	28	11402203	12	8	22908354	10	5
11010709	14	60	11402401	6	27	22908552	10	4
11014008	12	13	11402500	12	10	22908701	10	10
11017357	6	1	11402716	12	3	22908800	10	14
11018207	10	18	11403003	26	2	22908909	10	12
11023017	18	4	11403102	6	19-20	22909006	10	15
11023504	20	7	11403151	6	17	22910806	12	25
11024304	18	35	11403300	8	31	22910905	12	21
11024700	18	6	11403805	26	6	22911002	12	35
11025202	20	8	11403961	6	5	22911101	12	11
11047057	18	1-2	11403979	6	4	22911705	12	4
11047107	18	7	11404555	16	16	22911804	12	5
11070851	2	1	11404605	16	27	22912000	12	7
11071362	6	28	11404704	8	40	22912109	12	6
11074408	18	28	11404753	8	39	22912703	14	64
11074408	24	9	11405701	24	2	22912752	14	61
11074408	26	12	11405800	24	1	22912901	12	34
11076601	20	2	11415205	4	46	22913008	14	55
11076650	20	1	11415866	20	13	22915151	12	40
11076700	20	3	11415908	20	22	22915201	12	43
11076809	20	5	22900401	2	8	22915359	14	53
11076858	20	4	22901003	2	41	22916308	8	27
11076957	20	6	22901201	2	38	22916506	8	41
11091006	2	17	22901250	2	37	22919203	6	3
11091600	6	7	22901300	2	39	22920003	10	22
11142056	18	5	22901409	8	1	22920102	10	23
11142056	24	7	22902605	2	42	22920300	10	21
11142056	26	10	22903009	6	30	22920409	10	19
11142064	18	1-2	22903207	6	24	22920607	2	33
11142064	24	6	22903306	6	26	22920706	2	13
11142064	26	9	22904155	6	22	22920904	2	30
11302106	12	1	22904155	12	56	22921001	2	18
11302619	14	65	22904155	14	56	22921209	2	25
11302908	12	23	22905103	8	25	22921308	2	20
11303005	12	22	22906457	8	4	22921407	2	21
11303161	12	24	22907307	10	30	22921506	2	24
11305000	12	15	22907406	24	4	22921605	2	26

NUMERICAL INDEX OF PARTS

PART NO	PAGE	REF NO.	PART NO	PAGE	REF NO.	PART NO	PAGE	REF NO.
22921803	2	23	22932305	18	16	B1408552000	6	8
22923015	16	19	22932404	18	15	B1414555000	8	6
22923205	16	22	22932453	18	13	B1421560R00	24	21
22923312	16	17	22934202	18	23	B1501560R00	24	19
22923403	16	24	22934251	18	21	B1511560R00	24	27
22923502	16	26	22934301	18	24	B1512560R00	24	17
22923601	16	25	22934400	18	22	B1513560R00	24	16
22923700	16	20	22934509	18	26	B1514560R00	24	15
22923809	16	23	22934608	18	27	B1515560R00	24	22
22924005	16	4	22934707	18	14	B1516560R00	24	30
22924153	16	8	22940654	14	50	B1517560R00	24	23
22924302	16	9	22940753	12	32	B1518560R00	24	29
22924401	16	3	22940803	12	28	B1519560R00	24	24
22924500	16	11	22945307	2	27	B1520560R00	24	28
22924609	16	29	22958300	2	12	B1521555000	10	2
22924708	16	1	22962005	2	22	B1521560R00	24	26
22924807	16	12	22962054	2	19	B1522560R00	24	25
22924906	16	14	22967202	14	59	B1523560R00	24	18
22925002	16	15	22970503	6	19-20	B1524560RB0	24	14
22925101	16	7	22970552	6	16	B18302010A0	8	28
22927305	20	27	22970602	12	33	B18372010A0	8	38
22927404	20	28	22970859	12	38	B1837201SA0	26	18
22927602	20	29	22971204	12	2	B1903552000	6	9
22928303	20	21	22971550	12	17	B1905541B00	6	6
22928402	20	20	40017805	10	29	B8228125000	18	36
22928501	20	14	40021610	8	24	B9121012000	18	33
22928709	20	26	40021613	8	35	B9121012000	24	8
22928808	20	18	40021622	8	32	B9121012000	26	11
22928907	20	16	40021790	2	4	BP900000000	18	34
22929004	20	17	40023223	8	7	BP900000000	24	13
22930309	22	14	40024124	8	10	BP900000000	26	19
22930358	22	1	40057178	6	12	CM300200001	4	47
22930408	22	10	40057179	6	10	CM301300001	4	48
22930507	22	9	40060989	10	33	CQ252000000	16	10
22930705	22	7	B1213552000A	6	32	CS079073ASH	8	36
22930804	22	5	B1215552000	6	25	CS079101ASH	8	29
22930903	22	4	B13050120A0	8	14	D1109555E0L	2	31
22931000	22	3	B13061550A0	8	16	D1109560E0B	2	44
22931109	22	2	B13061550B0	8	13	D1126560E00A	2	45
22931208	22	15	B13061550C0	8	12	D1524555EBL	10	11
22931307	22	11	B13071550A0	8	19	D1524560EBB	10	20
22931406	22	8	B13071550B0	8	18	D1613560E00	12	45
22932107	18	10	B13081550A0	8	21	D1613560E0A	12	30
22932156	18	9	B1402552000A	8	2	D1830560EA0	26	17
22932206	18	18	B1403553000	8	8	MC200501300	26	20

NUMERICAL INDEX OF PARTS

PART NO	PAGE	REF NO.	PART NO	PAGE	REF NO.	PART NO	PAGE	REF NO.
MC200501400	8	34	SS4120615SP	2	16	TA1250406R0	2	35
MDB100B2100	8	11	SS4120615SP	16	6	TA1250705R0	2	6
MDB100B2100	26	4	SS4120915SP	2	36	TA2000502R0	2	10
NM6050001SE	22	17	SS4120915SP	8	42	TA2101002R0	2	11
NM6060001SE	18	20	SS4121415SP	20	9	WP0371016SD	26	8
NM6080721SE	18	32	SS4150915SP	16	13	WP0450826SC	20	31
NM6080721SE	24	12	SS6060210SP	2	40	WP0480856SP	14	52
NM6080721SE	26	16	SS6080320SP	2	3	WP0501016SD	20	10
NM6160511SE	22	18	SS6090560TP	12	20	WP0702026SP	14	67
NS6090310SP	26	7	SS6090620TP	12	36	WP0871602SE	18	30
NS6680410SP	12	37	SS6090670TP	8	5	WP0871602SE	24	10
RC0150001KP	12	49	SS6090910SP	10	32	WP0871602SE	26	14
RC0150001KP	14	49	SS6110420TP	8	30	WP1612616SE	22	19
RC1850001KP	6	21	SS6110610TP	2	34	WS0510002KN	22	16
RE0500000K0	10	17	SS6111010TP	16	28	WS0861410KR	18	31
RE0500000K0	12	19	SS6121610SP	12	39	WS0861410KR	24	11
RE1000000K0	18	19	SS6121860SP	12	9	WS0861410KR	26	15
RO029180100	6	33	SS6151220SP	14	69	WS1643202KR	22	20
RO037180100	10	3	SS6661110SP	6	18	WZ1250300K0	14	68
RO044240100	6	14	SS6700710SH	18	8			
RO078190100	14	58	SS7080510TP	8	9			
RO092270200	12	14	SS7081310SP	20	24			
RO098240100	18	3	SS7090710SP	24	20			
RO195240100	16	2	SS7091110TP	10	34			
SD0490261SP	20	23	SS7110540SP	2	43			
SD0720331SP	10	13	SS7110740TP	14	48			
SD1000801SH	12	42	SS7111120SP	14	54			
SE4301041SR	16	21	SS7121410TP	12	51			
SK3412000SC	20	30	SS7121410TP	14	51			
SL4030851SF	16	18	SS7121610SP	12	41			
SM4051405SE	22	12	SS7620750SP	14	47			
SM6061610SC	22	6	SS7681650TP	6	15			
SM8061010TP	14	63	SS8090670SP	2	28			
SM8061050TP	14	62	SS8110410TP	8	37			
SM8063012TR	18	12	SS8110510SP	20	25			
SM9061203SE	18	25	SS8150710TP	2	29			
SM9062563TR	18	17	SS8150710TP	12	26			
SM9082023SE	18	29	SS8151150TP	6	2			
SM9082023SE	24	3	SS8151550SP	6	29			
SM9082023SE	26	13	SS8660610TP	6	13			
SS2110920TP	2	32	SS8660810TP	8	22			
SS4080620TP	12	31	SS8660810TP	10	31			
SS4090615SP	6	34	SS8681650TP	6	11			
SS4110515SP	20	19	SS9661120CP	14	66			
SS4110915TP	8	33	TA0850604R0	2	5			