

MODEL : DU-141NH

List No : 0659-02

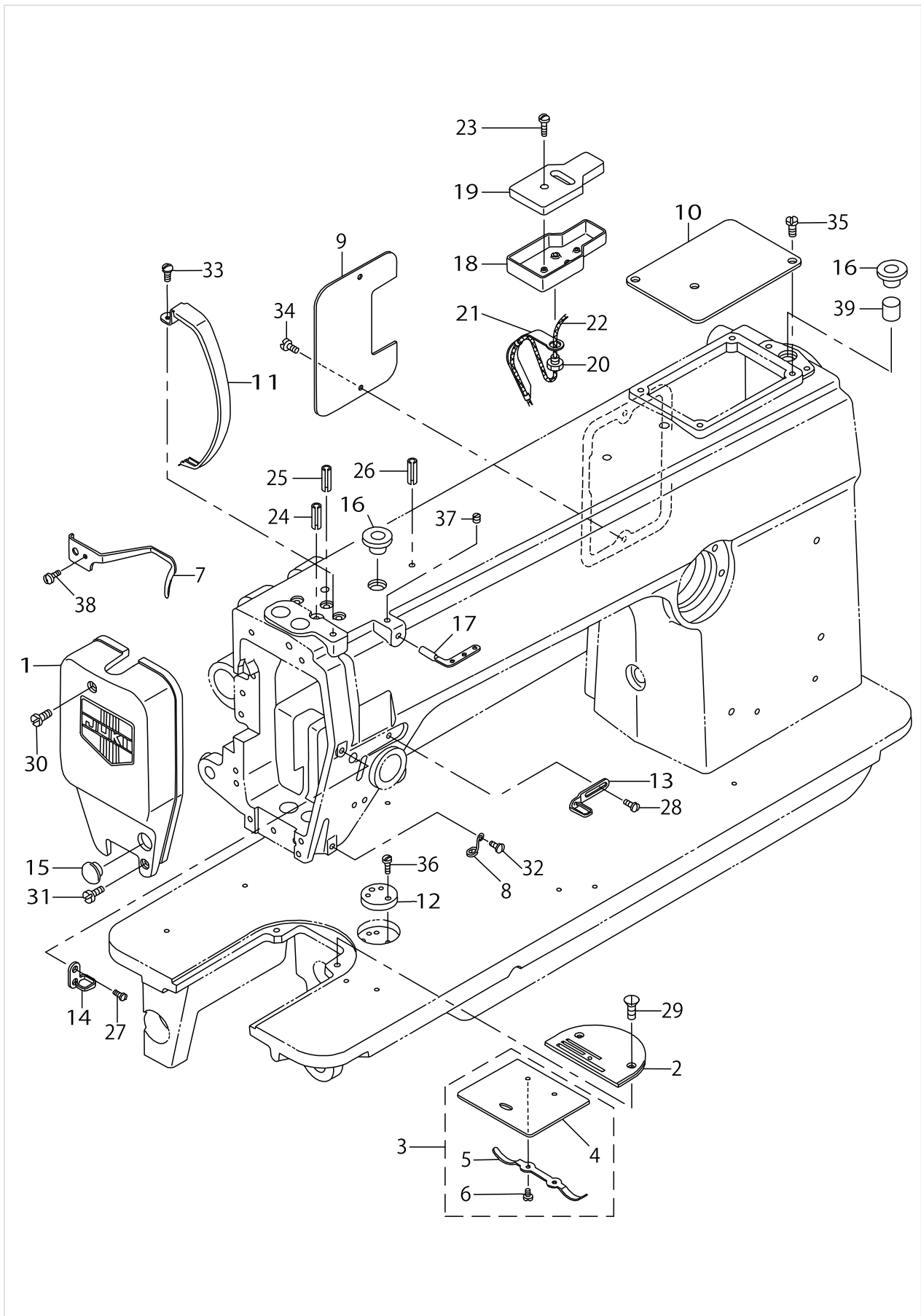
PARTS LIST

Published:05/12/2017

CONTENTS

FRAME & MISCELLANEOUS COVER COMPONENTS	1
MAIN SHAFT & ARM SHAFT COMPONENTS	3
NEEDLE BAR & THREAD TAKE-UP LEVER COMPONENTS	5
PRESSER BAR COMPONENTS	7
FEED MECHANISM COMPONENTS.....	9
HOOK DRIVING SHAFT COMPONENTS	13
THREAD TENSION COMPONENTS	15
UPPER FEED MECHANISM COMPONENTS	17
KNEE LIFTER & OIL PAN COMPONENTS	21
BELT COVER & THREAD WINDER COMPONENTS	23
THREAD STAND COMPONENTS.....	25
TABLE COMPONENTS	27
ACCESSORIES PARTS COMPONENTS	29
LIST FOR INFORMATION OF CHANGE (1).....	31
LIST FOR INFORMATION OF CHANGE (2).....	32
HOW TO MAKE USE OF THIS PARTS LIST	33

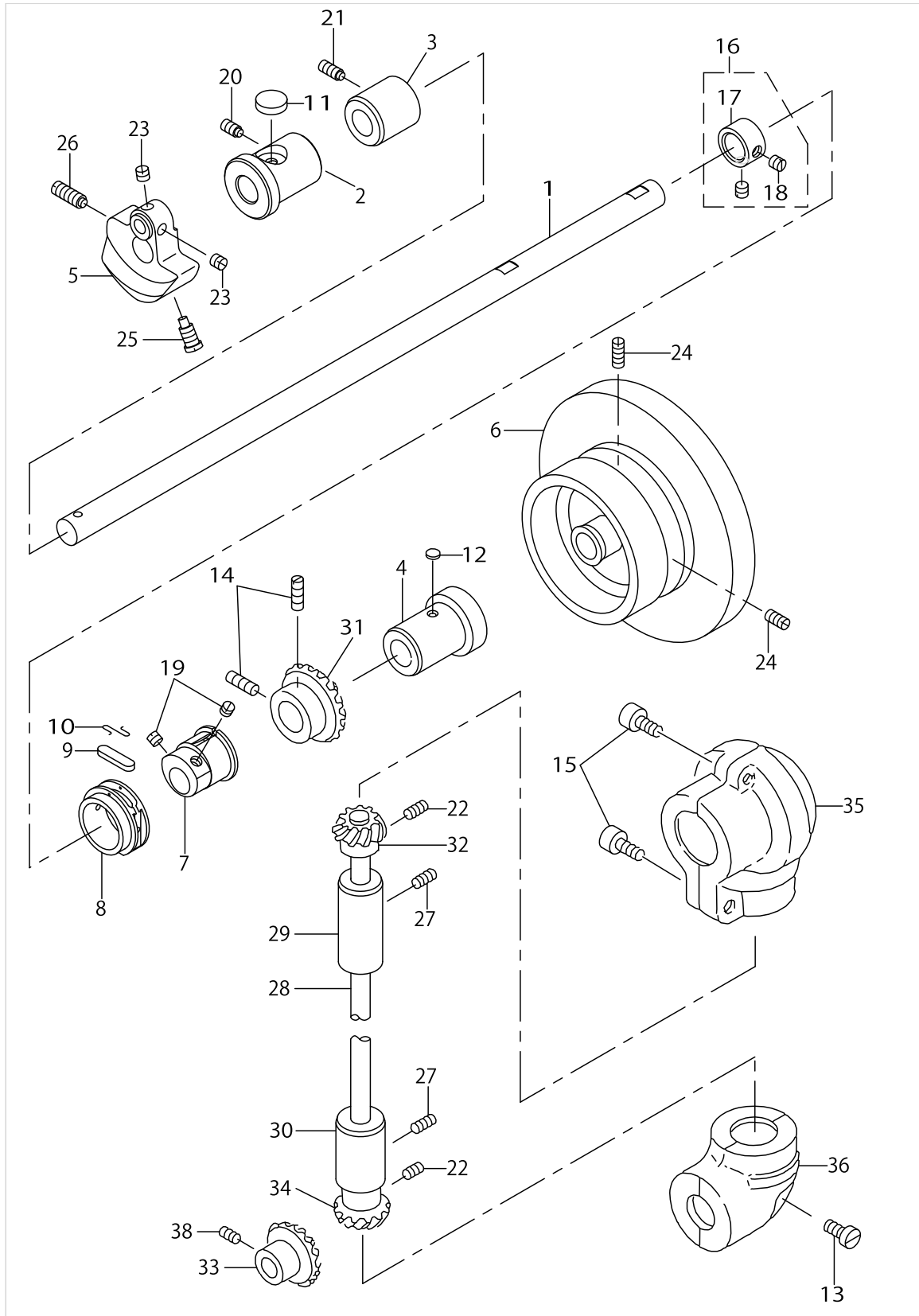
FRAME & MISCELLANEOUS COVER COMPONENTS



FRAME & MISCELLANEOUS COVER COMPONENTS

No.	Supply Code	Parts No.	Replacement	Parts name	Remarks	Choice	Step	Level	Cons	Qty	Rep. QTY
1	D	B1121141HA0D		FACE PLATE ASM.						1	
2		B1105141H00		THROAT PLATED=2.6						1	
3		B11100120A0		BED SLIDE ASM.						1	
4		B1110012000		SLIDE PLATE				*		1	
5		B1111012000		BED SLIDE SPRING				*		1	
6		SS6060210SP		SCREW 3/32-56 L=1.9				*		2	
7		21286802		THREAD GUIDE						1	
8		B1129141H00		THREAD GUIDE						1	
9		B1118141H00A		SIDE PLATE						1	
10		B1150141H00A		TOP COVER						1	
11		B1123141H00		THREAD TAKE-UP LEVER COVER						1	
12		B1103141H00		SCALE BASE PLATE						1	
13		D1126560E00A		ARM THREAD GUIDE A						1	
14		B1131141H00		FRAME THREAD GUIDE, B						1	
15		TA1250406R0		RUBBER PLUG						1	
16		B1156115000		RUBBER PLUG						2	
17		B1128522000		THREE HOLE THREAD EYELET						1	
18		B3503201000		OIL RESERVOIR						1	
19		B3504201000		OIL FELT						1	
20		B3515201000		CLAMP SLEEVE NUT						1	
21	D	B3527012000		HOLDER						1	
22		CQ202000000		OIL WICK						.3	
23		SS7112420SP		SCREW 11/64-40 L=24						1	
24		PS0350102KR		SPRING PIN 3.5X10						1	
25		PS0350102KR		SPRING PIN 3.5X10						1	
26		PS0350102KR		SPRING PIN 3.5X10						1	
27	R	SS2090710SP	SS2090710TP	SCREW 9/64-40 L=7						1	1.00
28		SS5090610SP		SCREW 9/64-40 L=6						1	
29		SS2110920TP		SCREW 11/64-40 L=8.5						2	
30		SS7112420SP		SCREW 11/64-40 L=24						1	
31		SS6111610SP		SCREW 11/64-40 L=16						1	
32		SS7090620TP		SCREW 9/64-40 L=6.1						1	
33		SS7110510SP		SCREW 11/64-40 L=5						1	
34		SS7110710SP		SCREW 11/64-40 L=7						2	
35		SS7110710SP		SCREW 11/64-40 L=7						2	
36		SS7110720SP		SCREW 11/64-40 L=7						2	
37		SS8110410TP		SCREW 11/64-40 L= 3.5						1	
38		SS6110610TP		SCREW 11/64-40 L=6						1	
39		B3517009000		OIL FELT REAR						1	

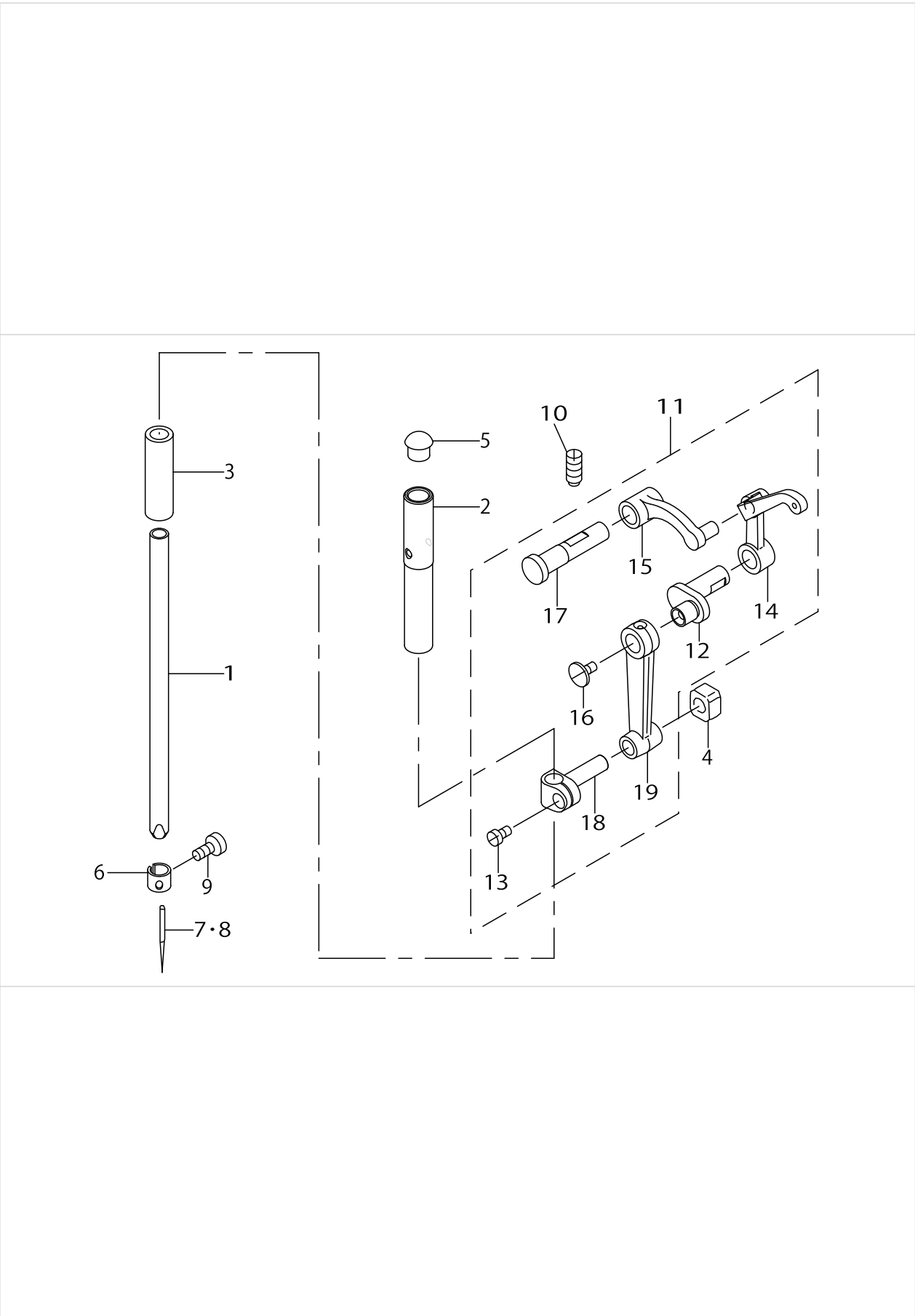
MAIN SHAFT & ARM SHAFT COMPONENTS



MAIN SHAFT & ARM SHAFT COMPONENTS

No.	Supply Code	Parts No.	Replacement	Parts name	Remarks	Choice	Step	Level	Cons	Qty	Rep. QTY
1		D1201141E00A		MAIN SHAFT						1	
2		B1202141H0A		ARM SHAFT BUSHING, FRONT						1	
3		B1203141H00		MAIN SHAFT BUSHING, INTERMEDIA						1	
4		B1204141H00		ARM SHAFT BUSHING, REAR						1	
5		D1206141E00		COUNTERWEIGT						1	
6		21286604		FLYWHEEL						1	
7		B1211141H00		FEED ECCENTRIC CAM						1	
8		B1211226000		ECCENTRIC RETAINER HOUSING						1	
9		B1212012000		OIL FELT						1	
10		B1213012000		FELT RETAINER						1	
11		B1203051000		OIL FELT						1	
12		B3511280000		OIL FELT						1	
13	D	SM6051410SC		SCREW M5X0.8 L=14						1	
14		SS8660610TP		SCREW 1/4-40 L=6						2	
15		SM6031202TP		SCREW M3X0.5 L=12						2	
16		22904155		MAIN SHAFT THRUST COLLAR ASM.						1	
17	R	22904106	22904155	MAIN SHAFT THRUST COLLAR				*		1	1.00
18		SS8660610TP		SCREW 1/4-40 L=6				*		2	
19	R	SS8150710SP	SS8150710TP	SCREW 15/64-28 L=7						2	1.00
20	R	SS8151150SP	SS8151150TP	SCREW 15/64-28 L=10.5						1	1.00
21		SS8151550SP		SCREW 15/64-28 L=15						1	
22		SS8660810TP		SCREW 1/4-40 L=8						6	
23		SS8660610TP		SCREW 1/4-40 L=6						2	
24		SS8151550SP		SCREW 15/64-28 L=15						2	
25		SS7681750TP		SCREW 9/32-28 L=16.5						1	
26		SS8681950SP		SCREW 9/32-28 L=19						1	
27		SS8151550SP		SCREW 15/64-28 L=15						2	
28		B1301201000		UPRIGHT SHAFT						1	
29	D	B1302271000		UPRIGHT SHAFT BUSHING, UPPER						1	
30		B1303271000		BUSHING, LOWER						1	
31		B13050120A0		GEAR ASM.						1	
32		B13061550A0		PINION ASM.						1	
33		B13071550A0		GEAR ASM. LARGE						1	
34		B13081550A0		PINION ASM.						1	
35		B13052710B0		GEAR CASE ASM.						1	
36		B13072710A0		PINION CASE ASM.						1	

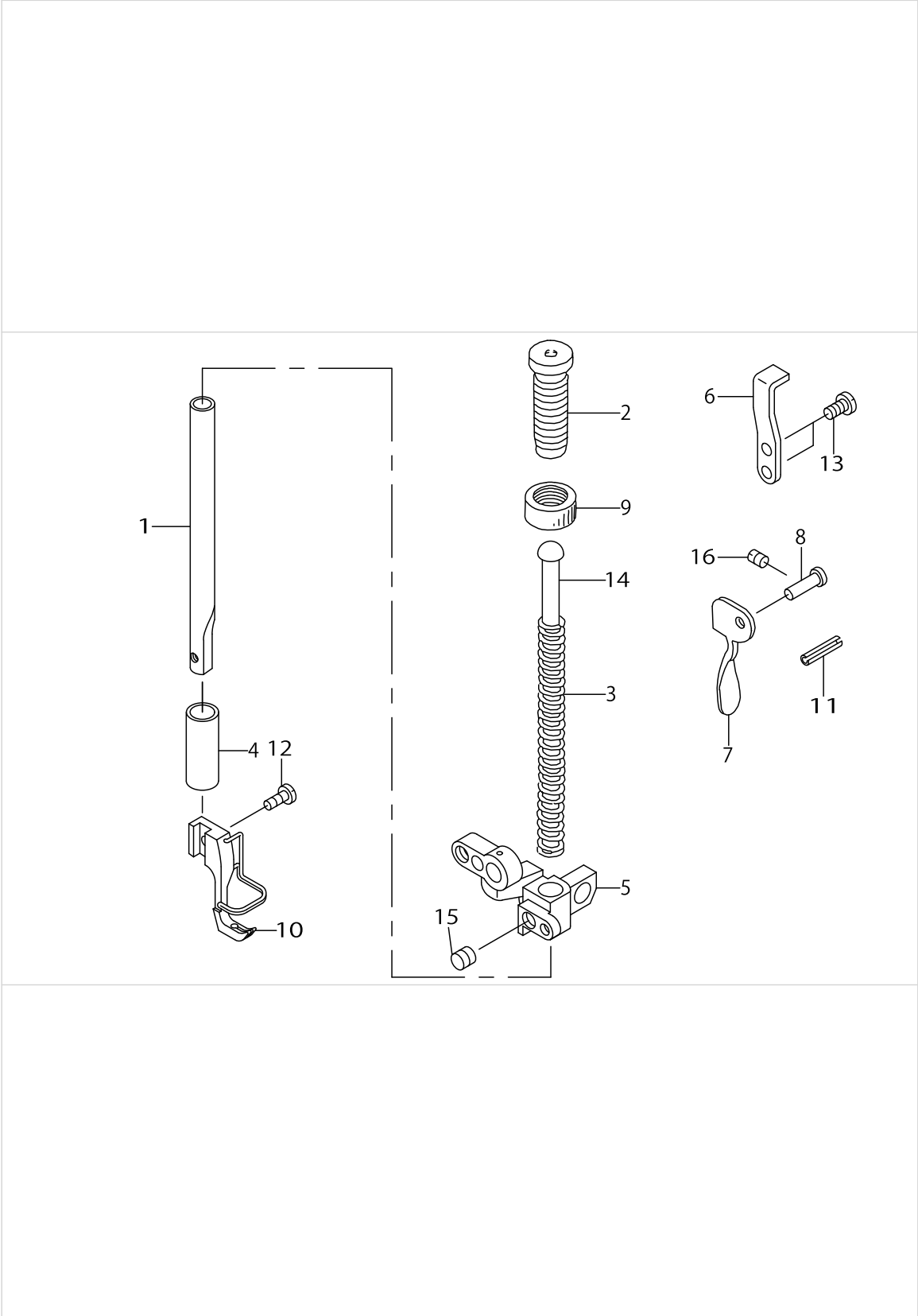
NEEDLE BAR & THREAD TAKE-UP LEVER COMPONENTS



NEEDLE BAR & THREAD TAKE-UP LEVER COMPONENTS

No.	Supply Code	Parts No.	Replacement	Parts name	Remarks	Choice	Step	Level	Cons	Qty	Rep. QTY
1		B1401141H0A		NEEDLE BAR						1	
2		22906101		NEEDLE BAR BUSHING, UPPER						1	
3		D1403141E00		NEEDLE BAR BUSHING, LOWER						1	
4		B1414555000		SLIDE BLOCK						1	
5	R	B1405012000	22901409	CAP						1	1.00
6		D1418141E00		NEEDLE BAR THREAD GUIDE						1	
7		MDB100B2100		NEEDLE DBX1 #21	EXCEPT JE					1	
8		MC142501300		NEEDLE 1738 130	FOR JE					1	
9		SS7080510TP		SCREW 1/8-44 L=4.5						1	
10		SS8151550SP		SCREW 15/64-28 L=15						1	
11		B1901141HA0		THREAD TAKE-UP LEVER ASM.						1	
12	R	B1210141H00	B1901141HA0	NEEDLE BAR CRANK				*		1	1.00
13		SS6090670TP		SCREW 9/64-40 L=6				*		1	
14	R	B1901141H00	B1901141HA0	THREAD TAKE-UP LEVER				*		1	1.00
15	R	B1902115000	B19011150A0	THREAD TAKE-UP CRANK				*		1	1.00
16	R	B1903141H00	B1903552000	END SCREW LEFT				*		1	1.00
17	D	B1904115000		THREAD TAKE-UP CRANK SHAFT STU				*		1	
18		B14115520A0		NEEDLE ROD HOLDER ASM.				*		1	
19		B1408141H00		NEEDLE BAR CRANK ROD				*		1	

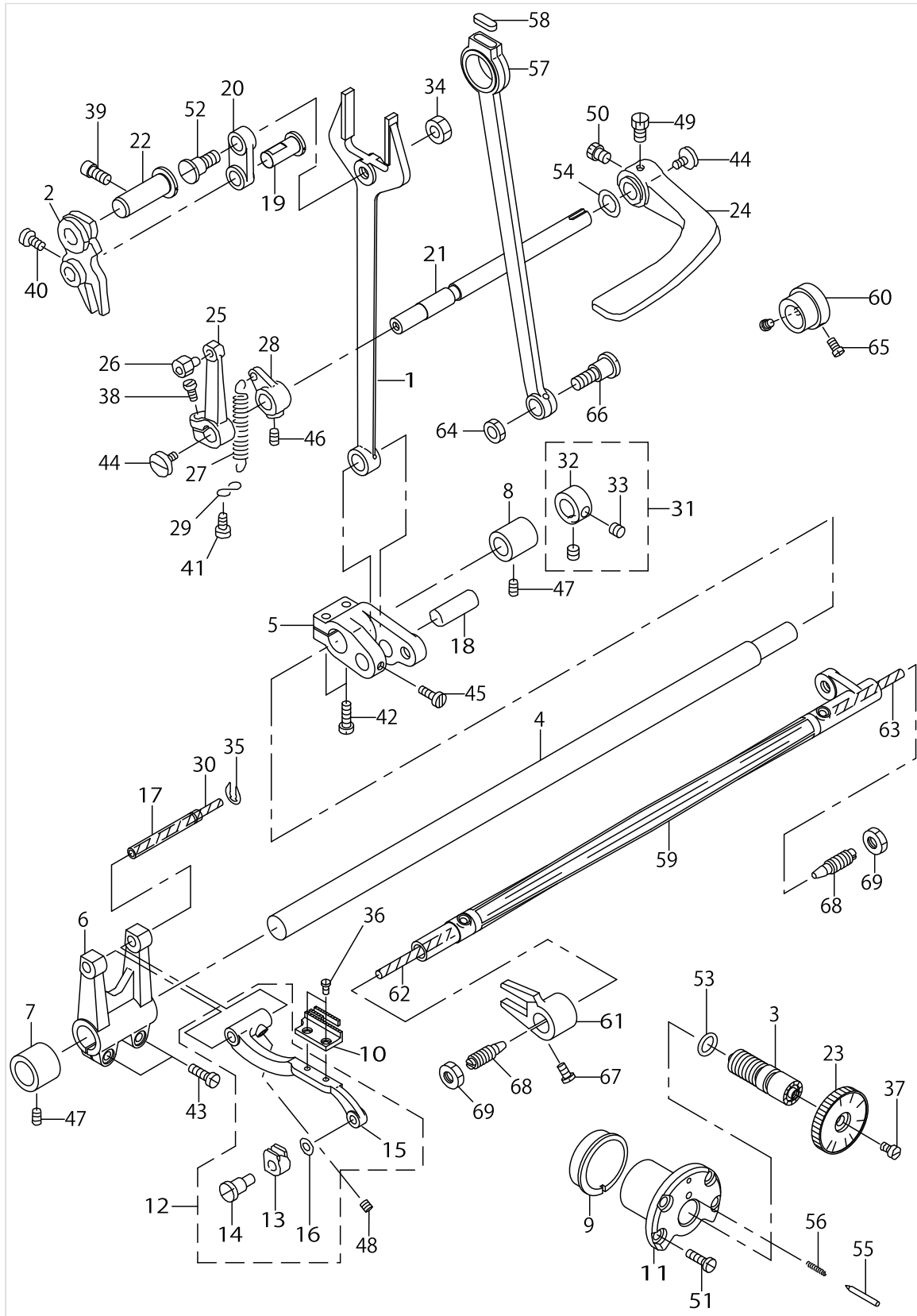
PRESSER BAR COMPONENTS



PRESSER BAR COMPONENTS

No.	Supply Code	Parts No.	Replacement	Parts name	Remarks	Choice	Step	Level	Cons	Qty	Rep. QTY
1	R	B1501127000	40017805	PRESSER BAR						1	1.00
2	R	B1509555000	40011951	PRESSER SPRING REGULATOR						1	1.00
3		B1505227T00A		PRESSER SPRING T						1	
4		B1510155000		PRESSER BAR LOWER BUSHING						1	
5		21103304		PRESSER BAR GUIDE BRACKET						1	
6		B1515141H00		LIFTING LEVER						1	
7		B1512141H00		HAND LIFTER						1	
8		B1513141H00		HAND LIFTER SHAFT						1	
9	R	B1511555000	40012052	NUT 1/2-28						1	1.00
10		D1525141EA0		PRESSER FOOT ASM.						1	
11		PS0300132KH		SPRING PIN 3X13						1	
12	R	SS7091110SP	SS7091110TP	SCREW 9/64-40 L=10.5						1	1.00
13		SS7110840SP		SCREW 11/64-40 L=7.8						2	
14		22907703		PRESSER GUIDE BAR						1	
15		SS8660610TP		SCREW 1/4-40 L=6						1	
16		SS8110750SP		SCREW 11/64-40 L= 6.5						1	

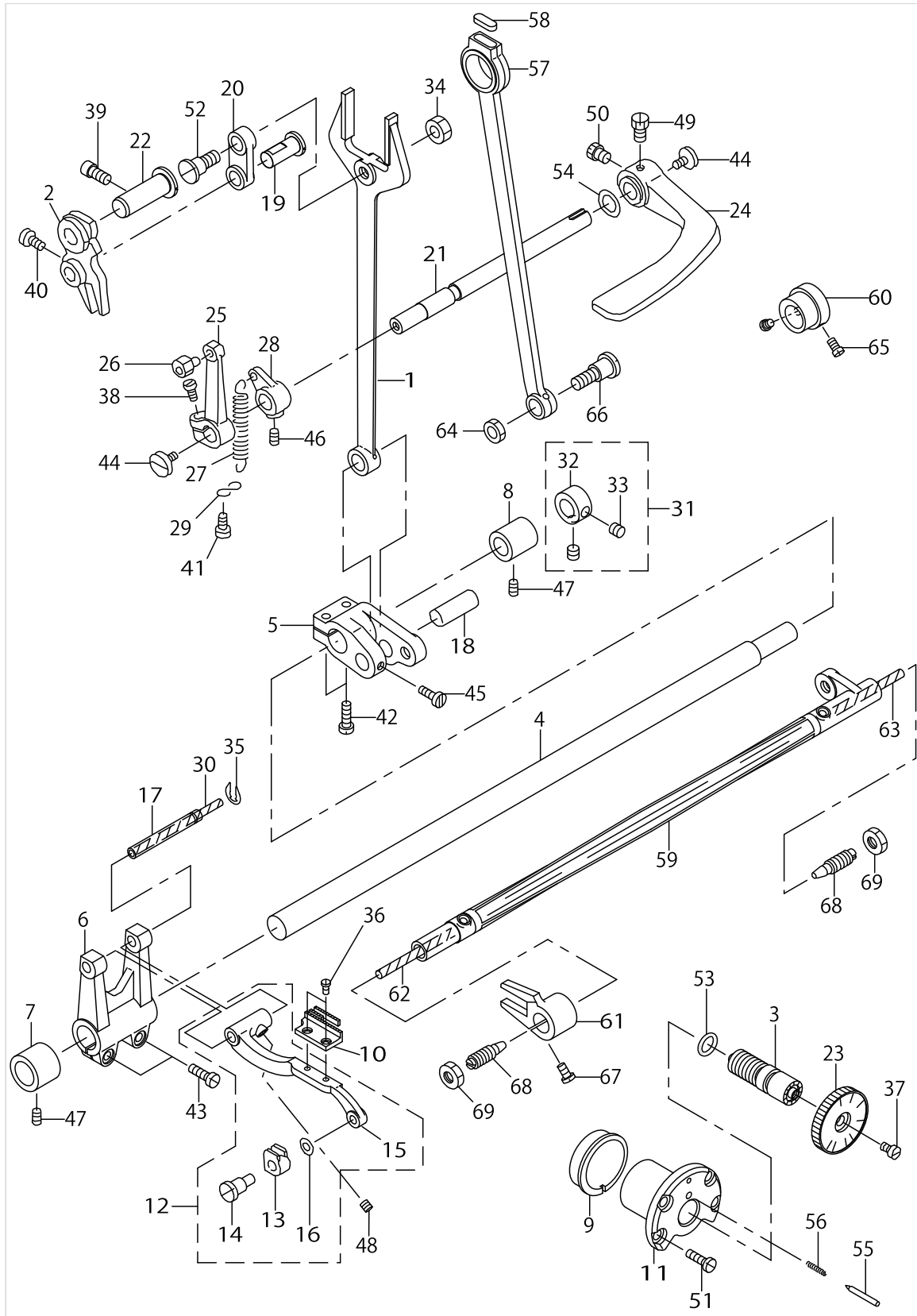
FEED MECHANISM COMPONENTS



FEED MECHANISM COMPONENTS

No.	Supply Code	Parts No.	Replacement	Parts name	Remarks	Choice	Step	Level	Cons	Qty	Rep. QTY
1		B1614141H00		PITMAN						1	
2		D1620141E00		FEED REGULATOR						1	
3	D	21273008		STITCH LENGTH RE- GULATING SCREW						1	
4		B1601141H00		FEED ROCK SHAFT						1	
5	D	B1605141H00		FEED ROCKER SHAFT CRANK						1	
6		B1603141H00		FEED ROCKER						1	
7		B1604141H00		BUSHING, FRONT						1	
8	R	11847308	B1602141H00	BUSHING, REAR						1	1.00
9		B1637141H00		ECCENTRIC BUSHING						1	
10		B1613141H00		FEED DOG						1	
11		21273107		STITCH DIAL BASE						1	
12		B1606141HA0		FEED BAR ASM.						1	
13		B1705155000		FEED DRIVING SLIDE BLOCK				*		1	
14		B1706155000		FEED DRIVING SLID- E BLOCK HINGE				*		1	
15		B1606141H00		FEED BAR				*		1	
16	R	B1707155000	31255300	FEED DRIVING SLID- E BLOCK WASHE				*		1	1.00
17		B1604012000A		FEED BAR SHAFT						1	
18		B1611155000A		HINGE STUD FOR PITMAN						1	
19		21272802		HINGE PIN						1	
20		B1619141H00		FEED REGULATOR CONNECTING LINK						1	
21		B1621141H00A		CONTROL LEVER SHAFT						1	
22		21272604		HINGE PIN						1	
23	R	D1623141E0A	D1623141EA0	SCALE PLATE						1	1.00
24	D	B1624555000		REVERSE FEED CONTROL LEVER						1	
25	R	B1627226000	B16272260A0	REVERSE FEED CO- NTROL LEVER CRA						1	1.00
26		B16331220A0		CRANK SLIDE BLOCK STUD ASM.						1	
27		B1646201000		TENSION SPRING						1	
28		B1647226000		SUSPENSION BRACKET (A)						1	
29		B1648122000		SUSPENSION HOOK (B)						1	
30		CQ202000000		OIL WICK						.2	
31		CS111101CSH		THRUST COLLAR A- SM.D=11.11 W=10						1	
32		CS1111019SH		THRUST COLLAR D=11.11 W=10				*		1	
33		SS8660610TP		SCREW 1/4-40 L=6				*		2	
34		NS6680410SP		NUT 9/32-28						1	
35		RE0500711KP		SNAP RING 5						1	
36		SS4080620TP		SCREW 1/8-44 L=6						2	
37		SS6121050SP		SCREW 3/16-28 L=9.5						1	
38		SS6121210SP		SCREW 3/16-28 L=12						1	
39		SS6151220SP		SCREW 15/64-28 L=11.5						1	
40		SS6661110SP		SCREW 1/4-40 L=11						1	
41		SS7090710SP		SCREW 9/64-40 L=6.8						1	
42	R	SS7121410SP	SS7121410TP	SCREW 3/16-28 L=14						2	1.00
43	R	SS7121410SP	SS7121410TP	SCREW 3/16-28 L=14						2	1.00
44		SS7620750SP		SCREW 3/16-32 L=6.5						2	

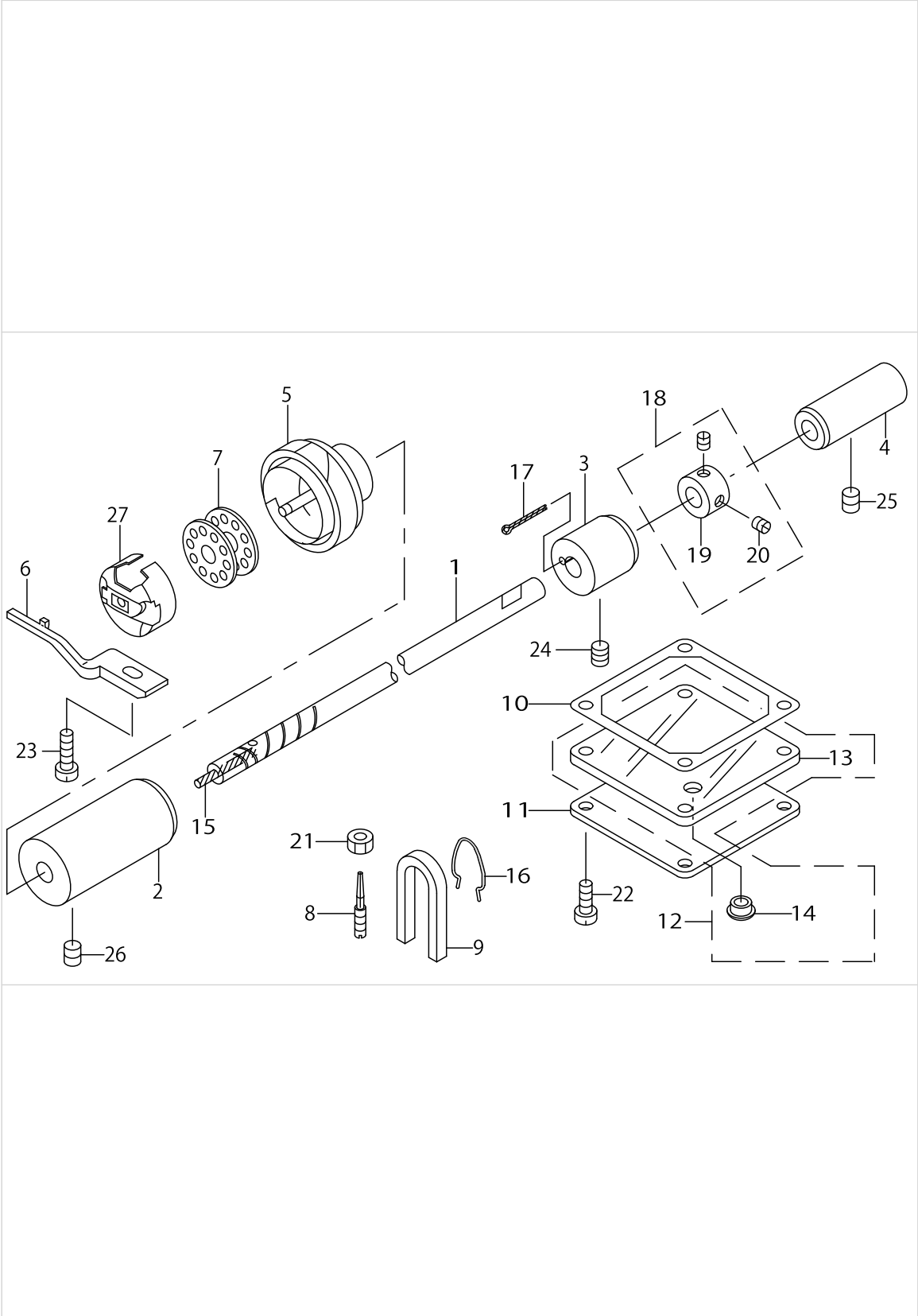
FEED MECHANISM COMPONENTS



FEED MECHANISM COMPONENTS

No.	Supply Code	Parts No.	Replacement	Parts name	Remarks	Choice	Step	Level	Cons	Qty	Rep. QTY
45	R	SS7120910SP	SS7120910TP	SCREW 3/16-28 L=9						1	1.00
46	R	SS8150710SP	SS8150710TP	SCREW 15/64-28 L=7						1	1.00
47	R	SS8150710SP	SS8150710TP	SCREW 15/64-28 L=7						2	1.00
48		SS8620610TP		SCREW 3/16-32 L=6						1	
49		SS9660720SP		SCREW 1/4-40 L=7						1	
50		SS9660720SP		SCREW 1/4-40 L=7						1	
51		B1638141H00		SCREW						4	
52		SD0950802SH		HINGE SCREW D= 9.53 H= 8						1	
53		RO092270200		RUBBER RING						1	
54		WZ1052010KP		WAVED WASHER						1	
55		B1147141H00		PIN						1	
56		B1148141H00		SPRING						1	
57		B1701115000		FEED DRIVING SHAFT CONNECTING						1	
58		11002904		ROLLER FELT						1	
59		B1705141H00		FEED DRIVING SHAFT						1	
60		B1208141H00		FEED CAM ASM.						1	
61		B1704141H00		FEED LIFTING FORK						1	
62		CQ202000000		OIL WICK						.1	
63		CQ202000000		OIL WICK						.1	
64		NS6680410SP		NUT 9/32-28						1	
65		SS6110710TP		SCREW 11/64-40 L= 6.5						2	
66		SD1020961SP		HINGE SCREW D=10.2 H=9.6						1	
67	R	SS7111120SP	SS7111120TP	SCREW 11/64-40 L=10.5						1	1.00
68		B1113012000		CENTER SCREW						2	
69		NS6740510SP		NUT 3/8-28						2	

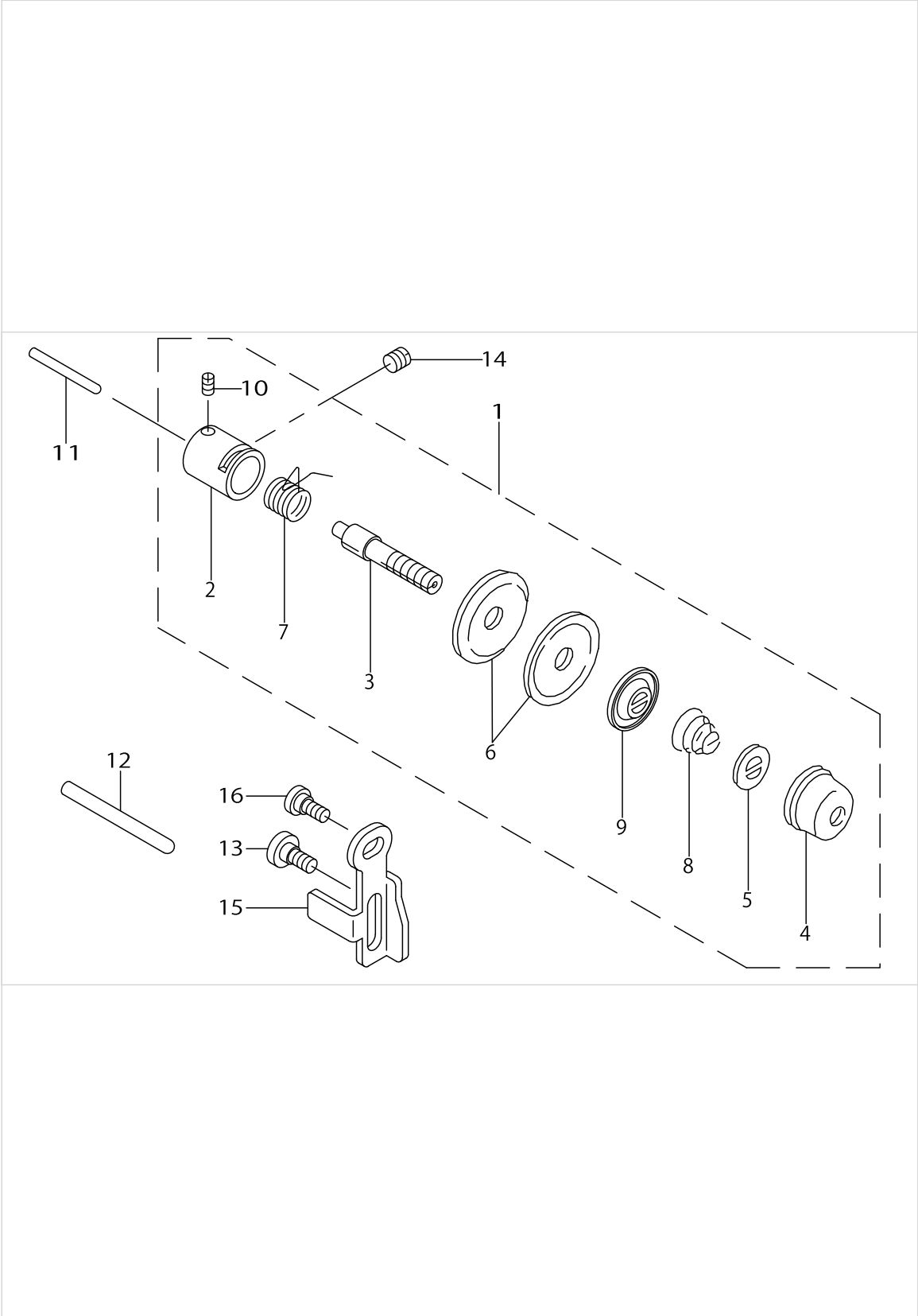
HOOK DRIVING SHAFT COMPONENTS



HOOK DRIVING SHAFT COMPONENTS

No.	Supply Code	Parts No.	Replacement	Parts name	Remarks	Choice	Step	Level	Cons	Qty	Rep. QTY
1		B1801141H00		HOOK DRIVING SHAFT						1	
2		B1802141H00A		DRIVING SHAFT BUSHING, FRONT						1	
3		B1803141H00		BUSHING, INTERMEDIATE						1	
4		B1806271000		LOWER SHAFT BUSHING,REAR						1	
5		B1830141HA0		HOOK ASM.						1	
6		B1835012000		BOBBIN CASE POSI- TIONING FINGER						1	
7		B9117201000		BOBBIN						1	
8		B1834512000A		OIL ADJUSTING SCREW						1	
9		B1155141H00		OIL PIEP						1	
10		B1152141H00		GASKET						1	
11		B1154141H00		OIL PUMP COVER						1	
12		B1151141HA0		COVER ASM.						1	
13		B1151141H00		LUBRICATING OIL PUMP COVER				*		1	
14		TA0750404R0		PLUG D=7.5 L=3.5				*		1	
15		CQ200000000		OIL WICK						.1	
16		B1156141H00		FELT HOLDER						1	
17		CQ202000000		OIL WICK						.1	
18	R	CS0791010SH	CS079101ASH	THRUST COLLAR A- SM. D=7.94 W=10						1	1.00
19		CS0791016SH		THRUST HOLDER D=7.94 W=10				*		1	
20		SS8110520TP		SCREW 11/64-40 L= 4.5				*		2	
21		NS6110530SP		NUT 11/64-40						1	
22		SS6111210SP		SCREW11/64-40L=12						4	
23		SS6111140SP		SCREW11/64-40L=11						1	
24	R	SS8150710SP	SS8150710TP	SCREW 15/64-28 L=7						1	1.00
25	R	SS8150710SP	SS8150710TP	SCREW 15/64-28 L=7						1	1.00
26		SS8151550SP		SCREW15/64-28L=15						1	
27		21271556		BOBBIN CASE ASM.						1	

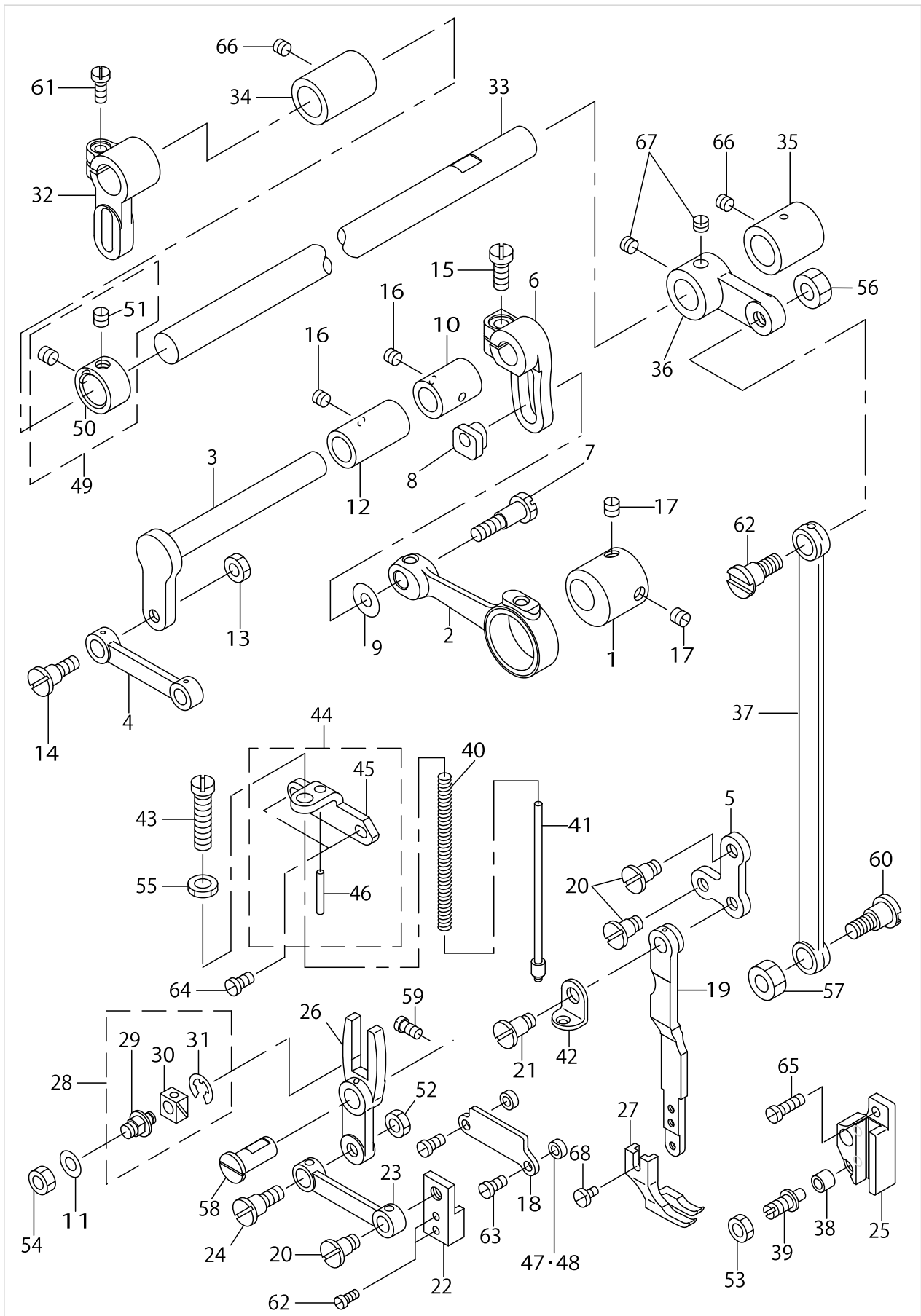
THREAD TENSION COMPONENTS



THREAD TENSION COMPONENTS

No.	Supply Code	Parts No.	Replacement	Parts name	Remarks	Choice	Step	Level	Cons	Qty	Rep. QTY
1	R	D3111141EA0	D3111141EAA	TENSION CONTROLLER ASM.						1	1.00
2	R	B3111126000	22945307	TENSION POST SOCKET				*		1	1.00
3		B3115552000		TENSION POST				*		1	
4		11018900		TENSION NUT				*		1	
5		B3120125000		ROTATING STOPPER				*		1	
6	R	B3126012000	22921506	THREAD TENSION DISK				*		2	1.00
7	R	B3128012000	22921605	TAKE-UP SPRING				*		1	1.00
8		B3129053000		TENSION SPRING				*		1	
9		B3132552000		THREAD TENSION DISK PRESSER				*		1	
10		SS8090670SP		SCREW 9/64-40 L=5.5				*		1	
11		B3118552F00		TENSION RELEASING PIN						1	
12		B3127127000		THREAD RELEASE AUXILIARY PIN						1	
13		SD0600321SP		HINGE SCREW D=6 H=3.2						1	
14	R	SS8150710SP	SS8150710TP	SCREW 15/64-28 L=7						1	1.00
15		B3134141H00		TENSION RELEASE PLATE						1	
16		SD0600271SP		HINGE SCREW D= 6 H= 2.7						1	

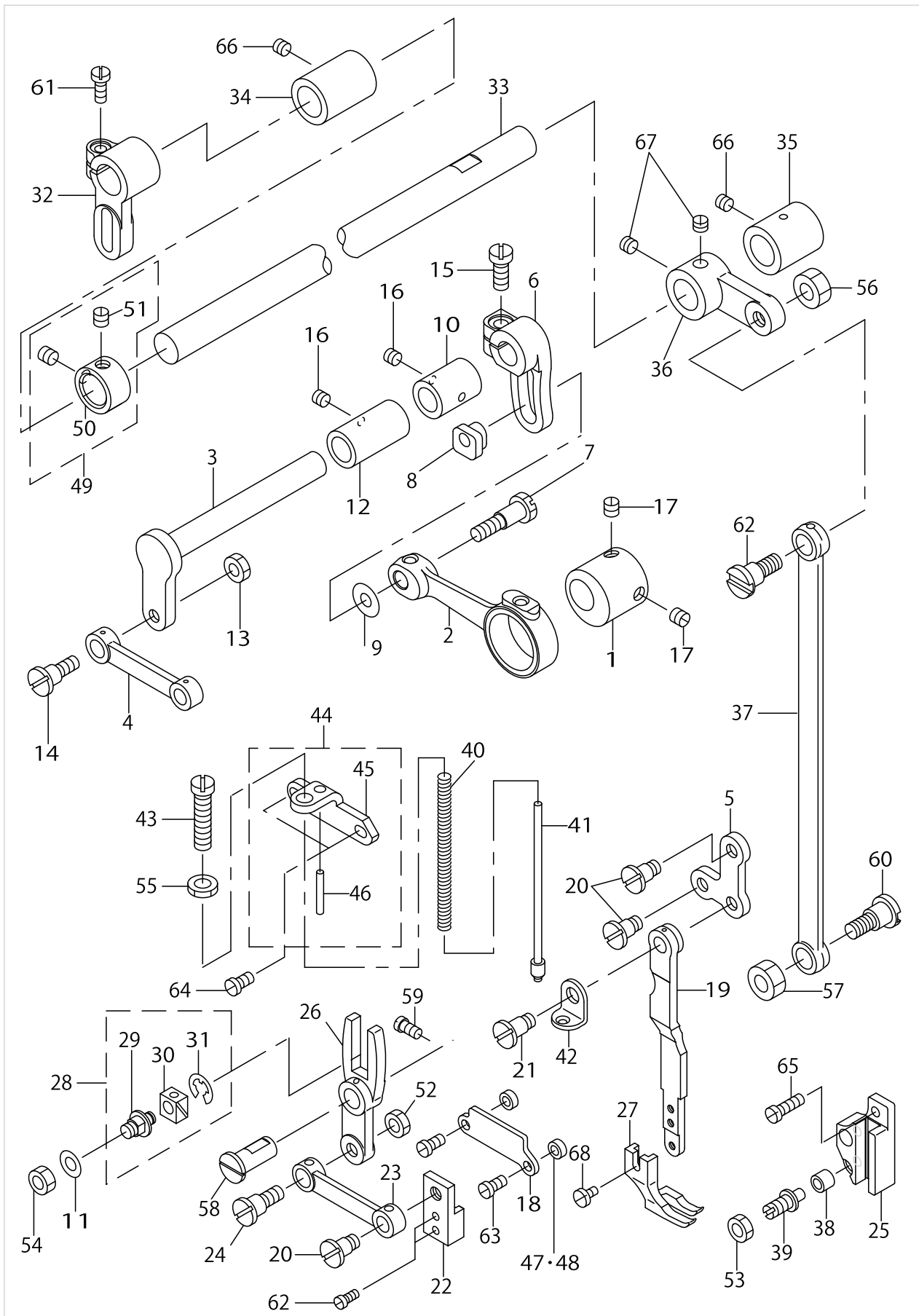
UPPER FEED MECHANISM COMPONENTS



UPPER FEED MECHANISM COMPONENTS

No.	Supply Code	Parts No.	Replacement	Parts name	Remarks	Choice	Step	Level	Cons	Qty	Rep. QTY
1		B3001141H00		FEED DRIVE ECCENTRIC CAM						1	
2		B3002141H00		CRANK CONNECTING ROD						1	
3		B3003141H00A		UPPER FEED DRIVING SHAFT						1	
4		B3005141H00		CONNECTING LINK						1	
5		B3006141H00		L-SHAPED LINK						1	
6	R	B3007141H00	B3007141HA0	UPPER FEED SPRING ROD						1	1.00
7		B3008141H00		HINGE SCREW						1	
8		B3009141H0A		NUT						1	
9		B3010141H00		WASHER						1	
10		B3011141H00		BUSHING						1	
11		WP0650876SD		WASHER 6.5X13X0.8						1	
12		B3011141H0A		BUSHING, FRONT						1	
13		NS6150310SP		NUT 15/64-28						1	
14		SD0850751SP		HINGE SCREW D= 8.50 H= 7.5						1	
15		SS6151440SP		SCREW 15/64-28L=14						1	
16		SS8150510TP		SCREW 15/64-28 L= 4.7						2	
17		SS8660610TP		SCREW 1/4-40 L=6						2	
18		B3012141H00A		WALKING BAR DRIVING LINK						1	
19	R	B3014141H00B	40022000	L-SHAPED ROD						1	1.00
20		B3015141H00		HINGE SCREW						3	
21		B3016141H00		HINGE SCREW, B						1	
22		B3017141H00B		CONNECTING LINK HOLDER						1	
23		B3005141H00		CONNECTING LINK						1	
24		SD0850751SP		HINGE SCREW D= 8.50 H= 7.5						1	
25		B3020141H00		SLIDE BLOCK GUIDE						1	
26		B3038141H00		SLIDE FORK						1	
27		B1526145000		PRESSURE FOOT						1	
28		B3023141HA0A		SLIDE BLOCK ASM.						1	
29	R	B3023141H00A	B3023141HA0A	SLIDE BLOCK PIN				*		1	1.00
30	R	B3024141H00	B3023141HA0A	SLIDE BLOCK				*		1	1.00
31		RE0400000K0		E-SHAPED SNAP RING (4MM)				*		1	
32		B3025141H00A		CONNECTING ARM						1	
33		B3026141H00		UPPER FEED DRIVING SHAFT						1	
34		10106102		BUSHING						1	
35		B3028141H00		BUSHING, REAR						1	
36	R	B3029141H00	40021784	DRIVING SHAFT ROD						1	1.00
37		B3030141H00		DRIVING ROD						1	
38		B3031141H00		CONNECTING STUD						1	
39		B3032141H00		CONNECTING STUD SHAFT						1	
40		B3033141H00		SPRING						1	
41		B3034141H00		SPRING POLE						1	
42		B3035141H00		RETAINING PLATE						1	
43		B3036141H00		ADJUSTING THUMB SCREW						1	
44		B3037141HA0		SPRING BASE ASM.						1	
45		B3037141H00		SPRING BAR				*		1	
46		PS0300201KP		SPRING PIN 3.0X20				*		1	

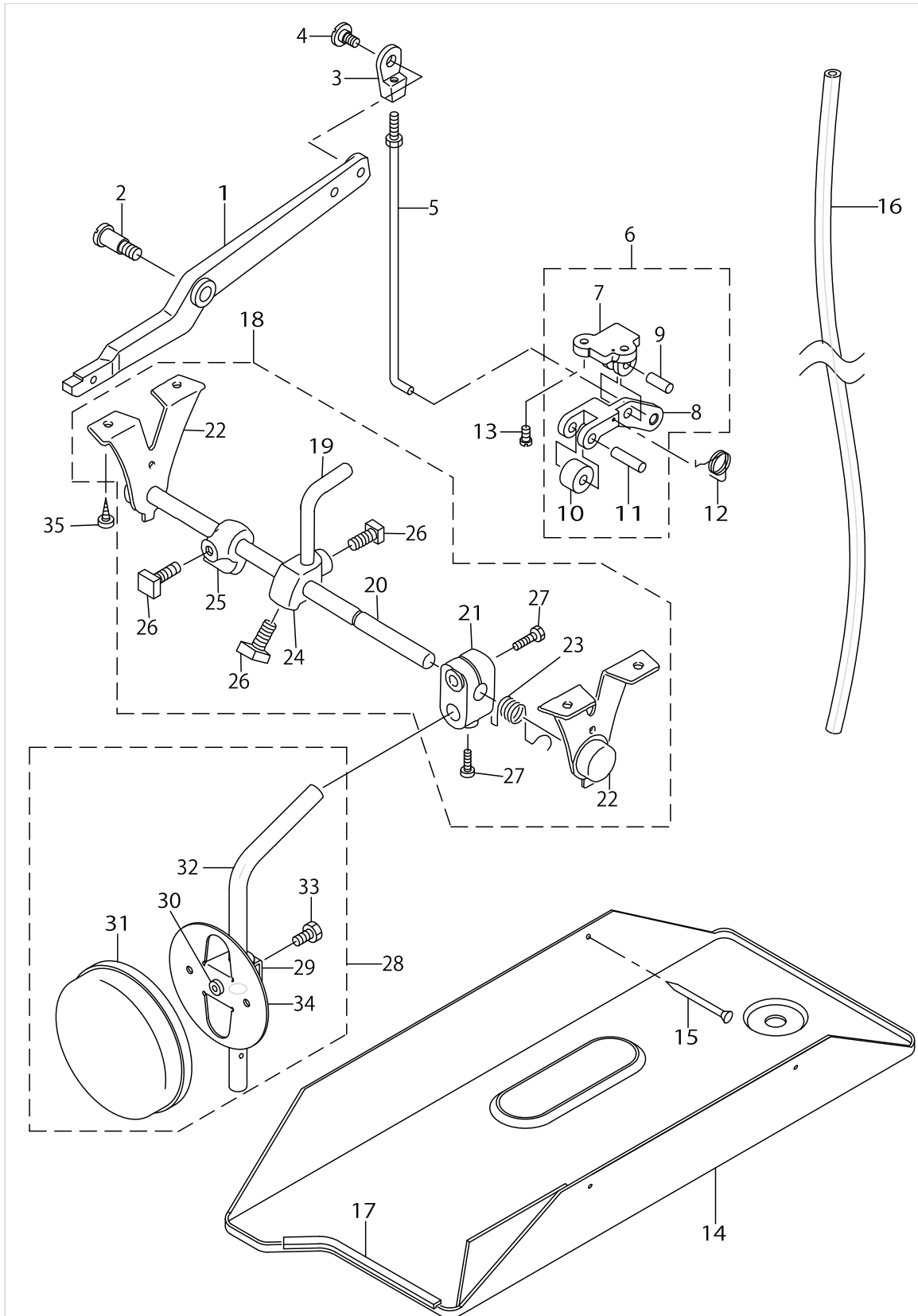
UPPER FEED MECHANISM COMPONENTS



UPPER FEED MECHANISM COMPONENTS

No.	Supply Code	Parts No.	Replacement	Parts name	Remarks	Choice	Step	Level	Cons	Qty	Rep. QTY
47		B3013141H0A		WASHER						2	
48		B3013141H0B		WASHER	SELECTIVE PART					2	
49		22904155		MAIN SHAFT THRU-ST COLLAR ASM.						1	
50	R	CS1471212SH	22904155	THRUST COLLAR D=14.72 W=12				*		1	1.00
51		SS8660610TP		SCREW 1/4-40 L=6				*		2	
52		NS6150310SP		NUT 15/64-28						1	
53		NS6660430SP		NUT 1/4-40						1	
54		NS6160520SP		NUT 1/4-24						1	
55		NS6680320SP		NUT 9/32-28						1	
56		NS6680410SP		NUT 9/32-28						1	
57		NS6680320SP		NUT 9/32-28						1	
58		21272802		HINGE PIN						1	
59		SS7120910TP		SCREW 3/16-28 L=9						1	
60		SD1020961SP		HINGE SCREW D=10.2 H=9.6						2	
61		SS6121210SP		SCREW 3/16-28 L=12						1	
62	R	SS7091110SP	SS7091110TP	SCREW 9/64-40 L=10.5						2	1.00
63	R	SS7110910SP	SS7110910TP	SCREW 11/64-40 L=8.5						2	1.00
64	R	SS7111120SP	SS7111120TP	SCREW 11/64-40 L=10.5						2	1.00
65		SS7111410TP		SCREW 11/64-40 L=14						3	
66		SS8150510TP		SCREW 15/64-28 L= 4.7						2	
67		SS8660530TP		SCREW 1/4-40 L= 4.5						2	
68		SS7090610SP		SCREW 9/64-40 L=6						1	

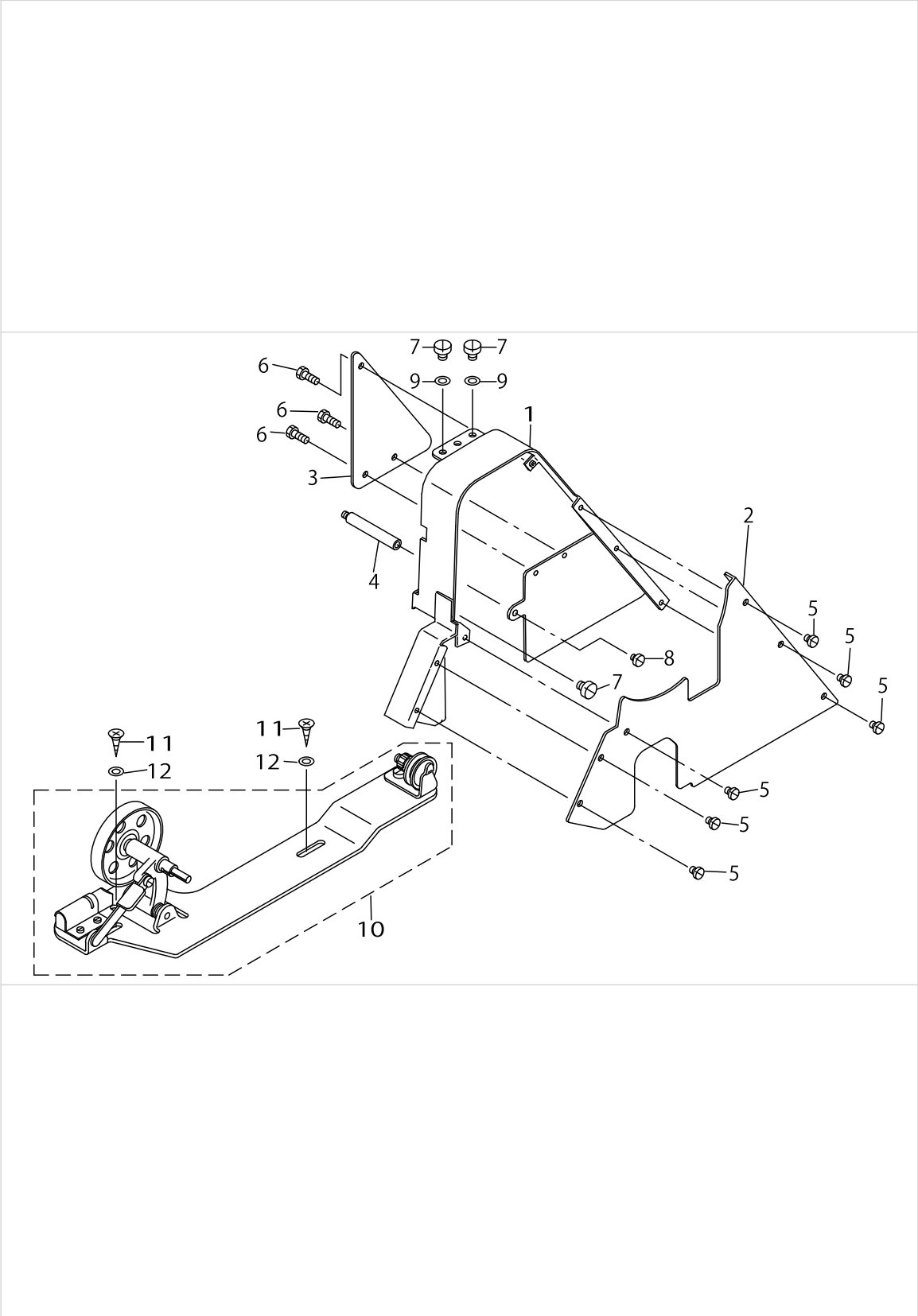
KNEE LIFTER & OIL PAN COMPONENTS



KNEE LIFTER & OIL PAN COMPONENTS

No.	Supply Code	Parts No.	Replacement	Parts name	Remarks	Choice	Step	Level	Cons	Qty	Rep. QTY
1	R	D3410141E00A	D3410141E0AA	KNEE LIFTER LEVER						1	1.00
2		SD0991551SP		HINGE SCREW D=9.9 H=5.5						1	
3		B3416141H00A		SWIVEL						1	
4		SD0790351SP		HINGE SCREW D=7.9 H=3.5						1	
5		B3415141HA0		CONNECTING ROD, VERTICAL						1	
6		B3402141HA0A		BELL CRANK BRACKET ASM.						1	
7	R	B3401141H00	B3402141HA0A	BELL CRANK BRACKET						1	1.00
8		B3402141H00A		BELL CRANK BRACKET				*		1	
9	R	B3403141H00	B3402141HA0A	PIN				*		1	1.00
10		B3404141H00		ROLLER				*		1	
11	D	B3405141H00		PIN				*		1	
12		B3406141H00		SPRING						1	
13	R	SS7120910SP	SS7120910TP	SCREW 3/16-28 L=9						2	1.00
14		B8217141HA0		OIL RESERVOIR ASM.						1	
15		10539906		SET NAIL						4	
16		BP800000000		VINYL TUBE, WHITE D=8						.8	
17	D	MAV02130000		EDGING						.2	
18		B3420141HAA		KNEE LIFTER ASM.						1	
19		B3426141H00A		KNEE LIFTING BENT ARM				*		1	
20		B3420141H0A		MAIN SHAFT				*		1	
21	R	B3433141H0A	22932453	BRACKET				*		1	1.00
22	R	B3432141H00	40032132	SUPPORT				*		2	1.00
23		B3435141H00		KNEE TOP ROTARY SPRING				*		1	
24		B3424141H00		MOUNTING BRACKET				*		1	
25		B3434141H00		BRACKET				*		1	
26	R	B3425141H00	SS9201813CP	MOUNTING BRACKET SET SCREW				*		3	1.00
27		SS9182010SN		SCREW 9/32-20 L=20				*		2	
28		22934251		KNEE PAD PLATE ASM.						1	
29		22934301		KNEE PAD PLATE SUPPORT				*		1	
30		22934400		KNEE PAD PLATE RUBBER				*		1	
31		22934509		KNEE PAD PLATE COVER				*		1	
32		22934608		KNEE PAD UPRIGHT SHAFT				*		1	
33		SM9061203SE		SCREW M6 L=12				*		1	
34		22934202		KNEE PAD PLATE				*		1	
35		SK3483200SE		WOOD SCREW D=4.8 L=32						4	

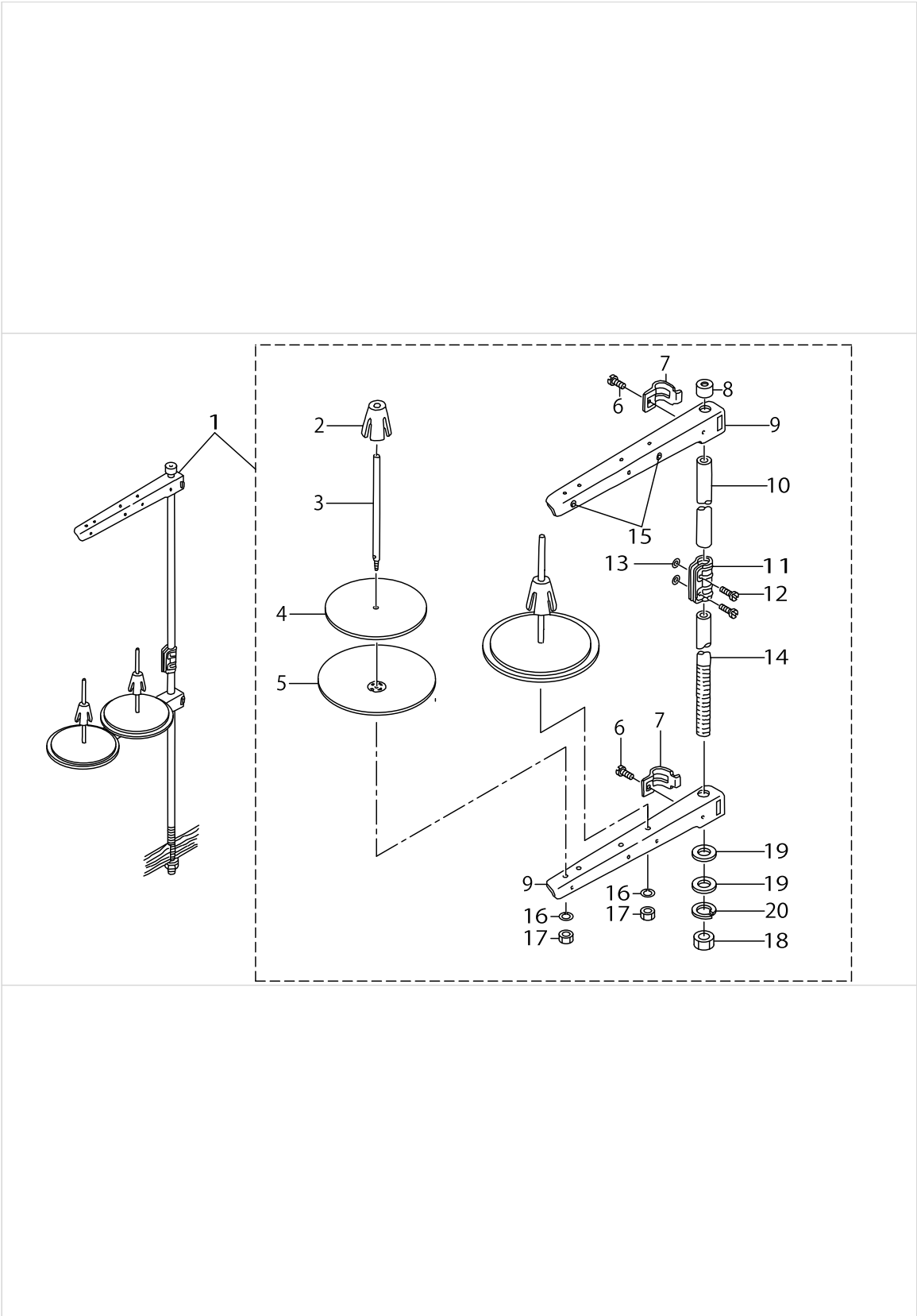
BELT COVER & THREAD WINDER COMPONENTS



BELT COVER & THREAD WINDER COMPONENTS

No.	Supply Code	Parts No.	Replacement	Parts name	Remarks	Choice	Step	Level	Cons	Qty	Rep. QTY
1		D8230141E00		BELT COVER						1	
2		D8231141E0B		BELT COVER TOP A						1	
3		D8233141E00		BELT COVER TOP B						1	
4		D8232141E00		BELT COVER SUPPORT						1	
5		SS7110340SP		SCREW 11/64-40 L= 3.2						6	
6		SS6110480SP		SCREW 11/64-40 L=4.3						3	
7		SS7150740SP		SCREW 15/64-28 L=7						3	
8		SS6110480SP		SCREW 11/64-40 L=4.3						1	
9		WP0621016SD		WASHER 6.2X13X1						2	
10		11415866		BOBBIN WINDER COMPL						1	
11	R	SK3482500SC	SK3482501SE	WOOD SCREW D=4.8 L=25						2	1.00
12		WP0501016SD		WASHER 5X10.5X1						2	

THREAD STAND COMPONENTS



THREAD STAND COMPONENTS

No.	Supply Code	Parts No.	Replacement	Parts name	Remarks	Choice	Step	Level	Cons	Qty	Rep. QTY
1	R	22930358	40096354	THREAD STAND ASM.						1	1.00
2	R	22931109	40085791	SPOOL RETAINER				*		2	1.00
3	R	22931000	40085790	SPOOL PIN				*		2	1.00
4		22930903		SPOOL REST CUSHION				*		2	
5		22930804		SPOOL REST				*		2	
6		SM6061610SC		SCREW M6 L=16				*		2	
7	R	22930705	40096354	THREAD GUIDE ARM JOINT				*		2	1.00
8		22931406		SPOOL REST ROD RUBBER CAP				*		1	
9	R	22930507	40096354	SPOOL REST ARM				*		2	1.00
10	R	22930408	40096354	SPOOL REST ROD, UPPER				*		1	1.00
11	R	22931307	40096354	SPOOL REST ROD JOINT				*		1	1.00
12		SM4051405SE		SCREW M5 L=14				*		2	
13		NM6050001SE		NUT M5				*		2	
14	R	22930309	40096354	SPOOL REST ROD, LOWER				*		1	1.00
15		22931208		THREAD GUIDE				*		2	
16		WS0510002KN		SPRING WASHER				*		2	
17		NM6050001SE		NUT M5				*		2	
18		NM6160511SE		NUT M16X1.5				*		1	
19		WP1702600S0		WASHER 17X30X2.6				*		2	
20	R	WS1643202KR	WP1612616SE	SPRING WASHER		A		*		1	2.00
20	R	WS1643202KR	40085796	SPRING WASHER		A		*		1	2.00

TABLE COMPONENTS

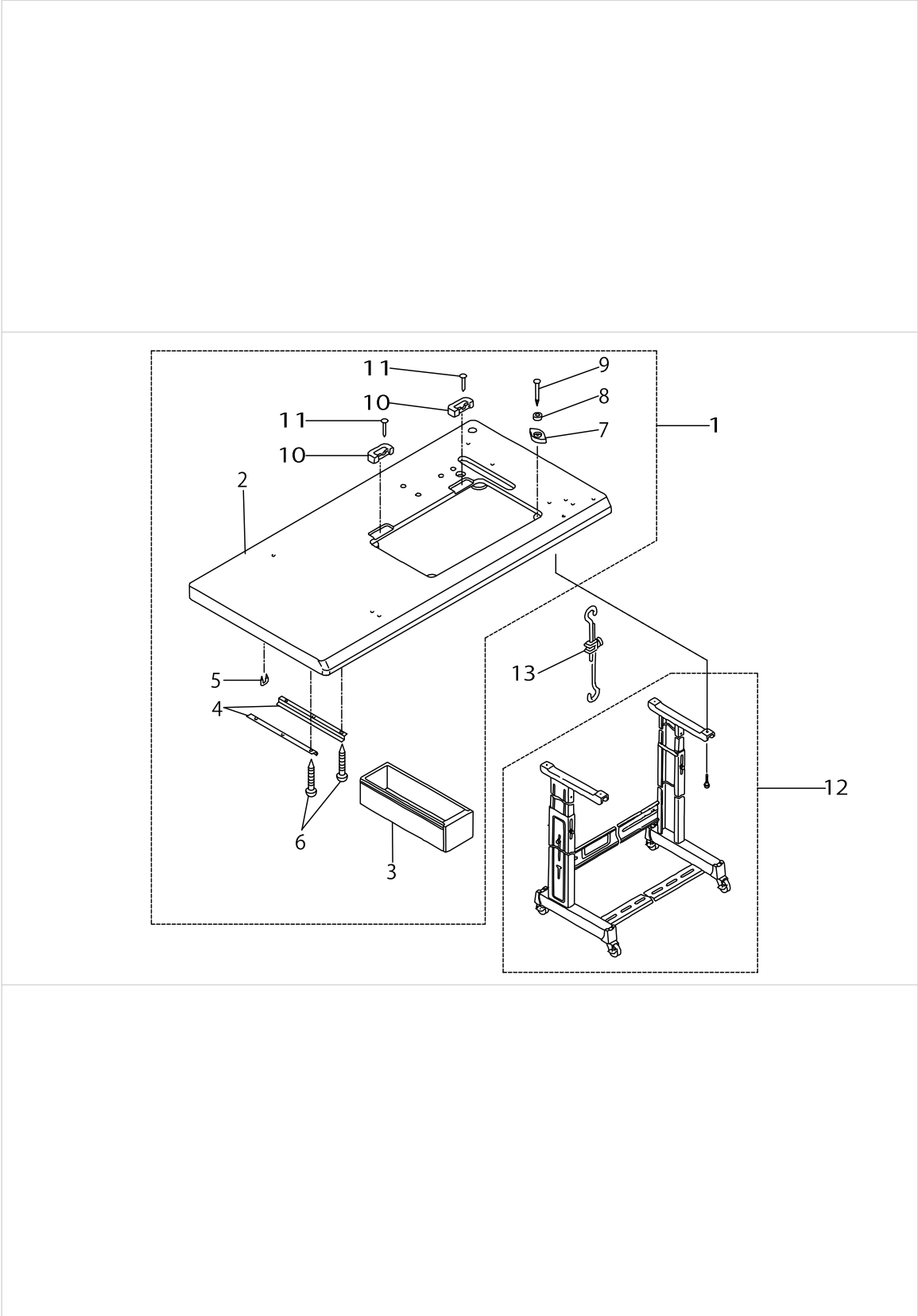
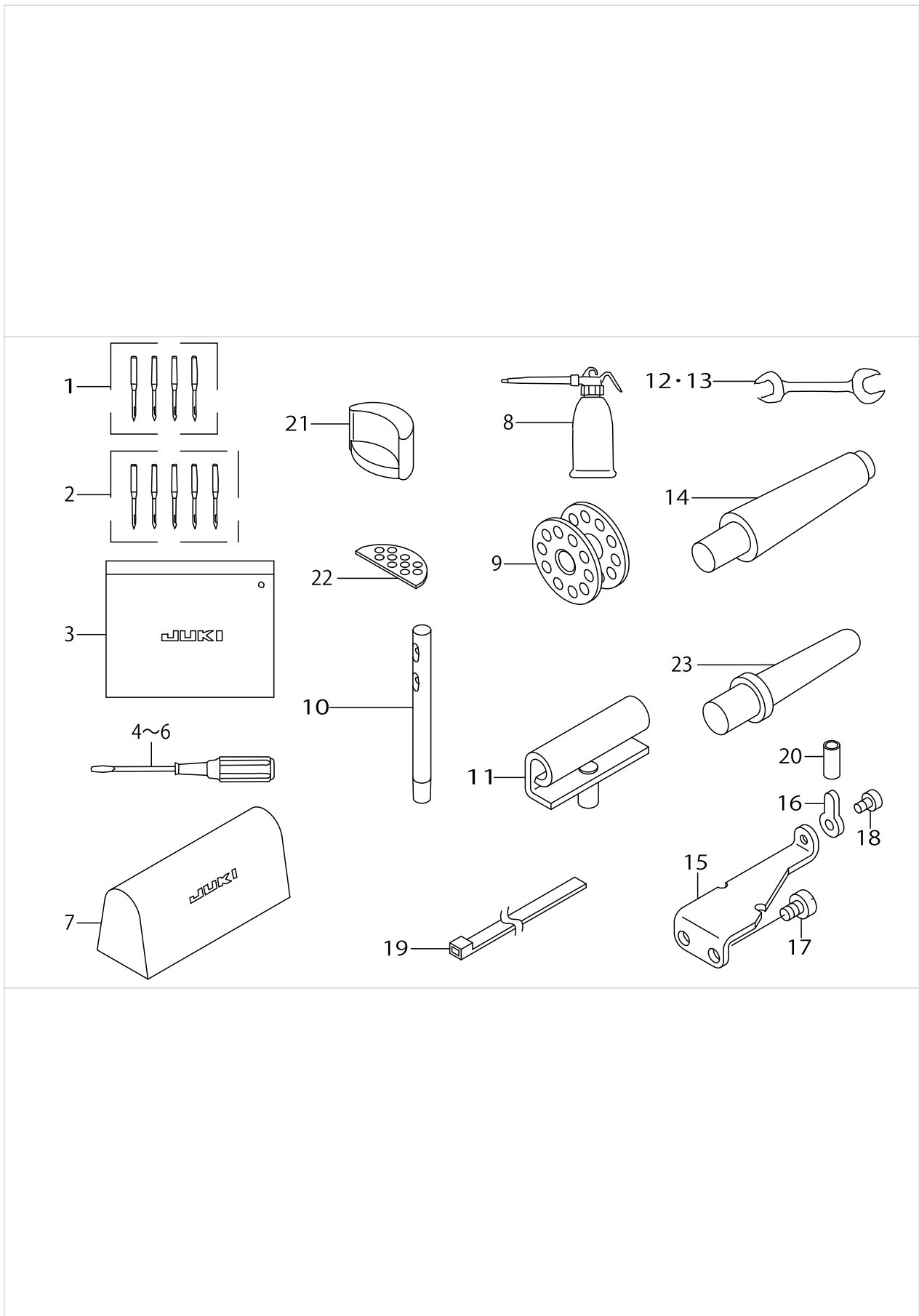


TABLE COMPONENTS

No.	Supply Code	Parts No.	Replacement	Parts name	Remarks	Choice	Step	Level	Cons	Qty	Rep. QTY
1	D	D8201141FA0		TABLE ASM.						1	
2		D8201141F00		TABLE				*		1	
3	D	D8203555B00		DRAWER				*		1	
4		B8204012000		DRAWER SUPPORT				*		2	
5		D8204555D00		DRAWER STOPPER				*		1	
6		SK3311600SE		WOOD SCREW D=3.1 L=16				*		6	
7		B8209012000		RUBBER CUSHION				*		4	
8		B8206012000		FELT CUSHION				*		4	
9		10539906		SET NAIL				*		4	
10		11075801		RUBBER SPACER				*		2	
11		B8210012000		CUSHION SET NAIL				*		4	
12		17011263		T LEG JUNCTION						1	
13		B71140120A0		MOTOR CONNECTING ROD ASM.						1	

ACCESSORIES PARTS COMPONENTS



ACCESSORIES PARTS COMPONENTS

No.	Supply Code	Parts No.	Replacement	Parts name	Remarks	Choice	Step	Level	Cons	Qty	Rep. QTY
1	D	MDB100B2104		NEEDLE DBX1 #21-4EA.	EXCEPT JE					1	
2	D	MC142501305		NEEDLE 1738 130-5	FOR JE					1	
3	R	B9101552000	22932800	ACCESSORY BOX						1	1.00
4		22933006		SCREW DRIVER,LARGE						1	
5	R	B9110012000	22933105	SCREW DRIVER, MIDDLE						1	1.00
6	R	B9111012000	22933204	SCREW DRIVER, SMALL						1	1.00
7	R	D9118555B00	22933303	PLASTIC COVER						1	1.00
8		B9121141HA0		OILER ASM.						1	
9		B9117201000		BOBBIN						4	
10		22958300		NEEDLE THREAD GUIDE PIN						1	
11	R	B8213125AA0	22958052	HINGE ASM.						2	1.00
12	R	B9112012000	26034702	WRENCH (11X14)						1	1.00
13		B9113012000		WRENCH (9X10)						1	
14	R	B82160570A0	B82160570AA	HEAD SUPPORT ASM.	FOR TOUCH BACK					1	1.00
15		D7101141E00		SYNCHRONIZER FIXED PLATE	OPTIONAL PARTS					1	
16		D7102141E00		SYNCHRONIZER SUPPORT PLATE	OPTIONAL PARTS					1	
17		SS7150940SP		SCREW 15/64-28 L=9	OPTIONAL PARTS					2	
18		SS7110710SP		SCREW 11/64-40 L=7	OPTIONAL PARTS					1	
19		GES12153000		OIL WICK HOLDER	OPTIONAL PARTS					1	
20		BT0630520Z0		HOLDER COVER	OPTIONAL PARTS					.1	
21		11076007		FRAME RUBBER CUSHION						2	
22		D8226555E00		FRAME RUBBER CUSHION A						2	
23	R	11073103	22931604	RUBBER CUSHION	EXCEPT T- OUCH BACK					1	1.00

LIST FOR INFORMATION OF CHANGE (1)

As to the place changed, refer to the corresponding Rev.No.
 When previous parts(Obsoleted part)and new parts(Added parts)are
 not interchangeable with each other:
 In this case,even obsoleted parts(D.)can be ordered with the
 obsoleted part number,so select the parts with changed dates and
 place your orders.

変更箇所は、該当Rev.No.版をご参照ください。
 部品の互換性がない変更の場合は、削除された品番でも、ご注文できます。

29060704
 No.0659-02 Rev.No.

*A:Added parts追加部品/D:Obsoleted parts削除部品/E:Erratum訂正

* Rev. No.	Page 頁	Ref. No.	Parts No. 品番	* Rev. No.	Page 頁	Ref. No.	Parts No. 品番
D 01	2	37	SS-8110510-TP	A 02	2	37	SS-8110410-TP
D 01	4	2	B1202-141-H00	A 02	4	2	B1202-141-H0A
D 01	4	11	B1218-012-000	A 02	4	11	B1203-051-000
D 01	4	12	B1702-012-000				
				A 02	4	12	B3511-280-000
D 01	4	13	CQ-2000000-00				
D 01	4	14	CQ-2000000-00				
D 01	4	15	CQ-2000000-00				
D 01	4	16	CS-147121A-SH	A 02	4	16	229-04155
D 01	4	17	CS-1471212-SH	A 02	4	17	229-04106
D 01	4	22	SS-8151550-SP				
D 01	4	27	TA-0300503-R0				
D 01	5	2	B1402-552-000-A	A 02	5	2	229-06101
D 01	5	10	SS-8110310-SP				
D 01	5	11	SS-8150310-SP				
D 01	6	14	SS-8110310-SP				
D 01	6	17	B1510-227-000	A 02	6	14	229-07703
D 01	8	3	B1634-141-H00-A	A 02	8	3	212-73008
D 01	8	10	B1613-141-H00-A	A 02	8	10	B1613-141-H00
D 01	8	11	B1636-141-H00	A 02	8	11	212-73107
D 01	8	19	B1618-226-000	A 02	8	19	212-72802
D 01	8	22	B1622-141-H00	A 02	8	22	212-72604
D 01	8	23	D1623-141-EA0	A 02	8	23	D1623-141-E0A
D 01	8	53	R0-0742401-00	A 02	8	53	RO-0922702-00
D 01	8	58	B1702-012-000	A 02	8	58	110-02904
D 01	9	21	NS-6110420-SP	A 02	9	21	NS-6110530-SP
D 01	9	27	D1837-141-EA0	A 02	9	27	212-71556
D 01	10	12	B2608-372-000	A 02	10	12	B3127-127-000
D 01	10	13	D3142-141-E00				
D 01	10	14	D3142-141-E0A				
D 01	12	11	B1702-012-000				
D 01	12	49	CS-147121A-SH	A 02	12	49	229-04155
D 01	12	58	B1618-226-000	A 02	12	58	212-72802
D 01	14	28	110-23751	A 02	14	28	229-34251
D 01	16	1	B3301-012-0A0	A 02	16	1	229-30358
D 01	18	4	B9109-555-000	A 02	18	4	229-33006

LIST FOR INFORMATION OF CHANGE (2)

*	Rev. No.	Page 頁	Ref. No.	Parts No. 品番	*	Rev. No.	Page 頁	Ref. No.	Parts No. 品番
D	01	18	10	B1114-012-000	A	02	18	10	229-58300
					A	02	18	23	110-73103

HOW TO MAKE USE OF THIS PARTS LIST

1.Explanation of codes

1)"*"mark.....means this part is changed from the previous parts book.

As to the details of the change, refer to the "List for information of change".

2)"#01".....refer to "Note" explanation at bottom of page.

2.Codes on the "Qty" column

- Each numeral indicates the number of parts required.
- "0.1" and "2.5" indicate the length (in meters) of the respective parts.

3.Parentheses mean that the corresponding part is a subpart that constructs an assembly part.

4.Dotted lines on the Figures indicate assembly parts.

1."注記"欄の記号説明

1) "*"印.....前回のパーツブックに比較して今回変更された部品を意味します。

変更内容は、"変更情報リスト"を参照してください。

2) "#01".....ページ下の"注記"の説明を参照してください。

2.数量欄の数字は、個数を表し、0.1、2.5等の数値は、長さ（単位メートル）を表します。

3.数量欄の（ ）は、組部品を構成している子部品であることを意味します。

4.イラストページの-----枠は、組構成であることを意味します。

NUMERICAL INDEX OF PARTS

PART NO	PAGE	REF NO.	PART NO	PAGE	REF NO.	PART NO	PAGE	REF NO.
10106102	18	34	B1103141H00	2	12	B1414555000	6	4
10539906	22	15	B1105141H00	2	2	B1501127000	8	1
10539906	28	9	B1110012000	2	4	B1505227T00A	8	3
11002904	12	58	B11100120A0	2	3	B1509555000	8	2
11018900	16	4	B1111012000	2	5	B1510155000	8	4
11073103	30	23	B1113012000	12	68	B1511555000	8	9
11075801	28	10	B1118141H00A	2	9	B1512141H00	8	7
11076007	30	21	B1121141HA0D	2	1	B1513141H00	8	8
11415866	24	10	B1123141H00	2	11	B1515141H00	8	6
11847308	10	8	B1128522000	2	17	B1526145000	18	27
17011263	28	12	B1129141H00	2	8	B1601141H00	10	4
21103304	8	5	B1131141H00	2	14	B1603141H00	10	6
21271556	14	27	B1147141H00	12	55	B1604012000A	10	17
21272604	10	22	B1148141H00	12	56	B1604141H00	10	7
21272802	10	19	B1150141H00A	2	10	B1605141H00	10	5
21272802	20	58	B1151141H00	14	13	B1606141H00	10	15
21273008	10	3	B1151141HA0	14	12	B1606141HA0	10	12
21273107	10	11	B1152141H00	14	10	B1611155000A	10	18
21286604	4	6	B1154141H00	14	11	B1613141H00	10	10
21286802	2	7	B1155141H00	14	9	B1614141H00	10	1
22904106	4	17	B1156115000	2	16	B1619141H00	10	20
22904155	4	16	B1156141H00	14	16	B1621141H00A	10	21
22904155	20	49	B1202141H0A	4	2	B1624555000	10	24
22906101	6	2	B1203051000	4	11	B1627226000	10	25
22907703	8	14	B1203141H00	4	3	B16331220A0	10	26
22930309	26	14	B1204141H00	4	4	B1637141H00	10	9
22930358	26	1	B1208141H00	12	60	B1638141H00	12	51
22930408	26	10	B1210141H00	6	12	B1646201000	10	27
22930507	26	9	B1211141H00	4	7	B1647226000	10	28
22930705	26	7	B1211226000	4	8	B1648122000	10	29
22930804	26	5	B1212012000	4	9	B1701115000	12	57
22930903	26	4	B1213012000	4	10	B1704141H00	12	61
22931000	26	3	B1301201000	4	28	B1705141H00	12	59
22931109	26	2	B1302271000	4	29	B1705155000	10	13
22931208	26	15	B1303271000	4	30	B1706155000	10	14
22931307	26	11	B13050120A0	4	31	B1707155000	10	16
22931406	26	8	B13052710B0	4	35	B1801141H00	14	1
22933006	30	4~6	B13061550A0	4	32	B1802141H00A	14	2
22934202	22	34	B13071550A0	4	33	B1803141H00	14	3
22934251	22	28	B13072710A0	4	36	B1806271000	14	4
22934301	22	29	B13081550A0	4	34	B1830141HA0	14	5
22934400	22	30	B1401141H0A	6	1	B1834512000A	14	8
22934509	22	31	B1405012000	6	5	B1835012000	14	6
22934608	22	32	B1408141H00	6	19	B1901141H00	6	14
22958300	30	10	B14115520A0	6	18	B1901141HA0	6	11

NUMERICAL INDEX OF PARTS

PART NO	PAGE	REF NO.	PART NO	PAGE	REF NO.	PART NO	PAGE	REF NO.
B1902115000	6	15	B3128012000	16	7	BT0630520Z0	30	20
B1903141H00	6	16	B3129053000	16	8	CQ200000000	14	15
B1904115000	6	17	B3132552000	16	9	CQ202000000	2	22
B3001141H00	18	1	B3134141H00	16	15	CQ202000000	10	63
B3002141H00	18	2	B3401141H00	22	7	CQ202000000	12	63
B3003141H00A	18	3	B3402141H00A	22	8	CQ202000000	14	17
B3005141H00	18	23	B3402141HA0A	22	6	CS0791010SH	14	18
B3006141H00	18	5	B3403141H00	22	9	CS0791016SH	14	19
B3007141H00	18	6	B3404141H00	22	10	CS1111019SH	10	32
B3008141H00	18	7	B3405141H00	22	11	CS111101CSH	10	31
B3009141H0A	18	8	B3406141H00	22	12	CS1471212SH	20	50
B3010141H00	18	9	B3415141HA0	22	5	D1126560E00A	2	13
B3011141H00	18	10	B3416141H00A	22	3	D1201141E00A	4	1
B3011141H0A	18	12	B3420141H0A	22	20	D1206141E00	4	5
B3012141H00A	18	18	B3420141HAA	22	18	D1403141E00	6	3
B3013141H0A	20	47-48	B3424141H00	22	24	D1418141E00	6	6
B3013141H0B	20	47-48	B3425141H00	22	26	D1525141EA0	8	10
B3014141H00B	18	19	B3426141H00A	22	19	D1620141E00	10	2
B3015141H00	18	20	B3432141H00	22	22	D1623141E0A	10	23
B3016141H00	18	21	B3433141H0A	22	21	D3111141EA0	16	1
B3017141H00B	18	22	B3434141H00	22	25	D3410141E00A	22	1
B3020141H00	18	25	B3435141H00	22	23	D7101141E00	30	15
B3023141H00A	18	29	B3503201000	2	18	D7102141E00	30	16
B3023141HA0A	18	28	B3504201000	2	19	D8201141F00	28	2
B3024141H00	18	30	B3511280000	4	12	D8201141FA0	28	1
B3025141H00A	18	32	B3515201000	2	20	D8203555B00	28	3
B3026141H00	18	33	B3517009000	2	39	D8204555D00	28	5
B3028141H00	18	35	B3527012000	2	21	D8226555E00	30	22
B3029141H00	18	36	B71140120A0	28	13	D8230141E00	24	1
B3030141H00	18	37	B8204012000	28	4	D8231141E0B	24	2
B3031141H00	18	38	B8206012000	28	8	D8232141E00	24	4
B3032141H00	18	39	B8209012000	28	7	D8233141E00	24	3
B3033141H00	18	40	B8210012000	28	11	D9118555B00	30	7
B3034141H00	18	41	B8213125AA0	30	11	GES12153000	30	19
B3035141H00	18	42	B82160570A0	30	14	MAV02130000	22	17
B3036141H00	18	43	B8217141HA0	22	14	MC142501300	6	7-8
B3037141H00	18	45	B9101552000	30	3	MC142501305	30	2
B3037141HA0	18	44	B9110012000	30	4~6	MDB100B2100	6	7-8
B3038141H00	18	26	B9111012000	30	4~6	MDB100B2104	30	1
B3111126000	16	2	B9112012000	30	12-13	NM6050001SE	26	17
B3115552000	16	3	B9113012000	30	12-13	NM6160511SE	26	18
B3118552F00	16	11	B9117201000	14	7	NS6110530SP	14	21
B3120125000	16	5	B9117201000	30	9	NS6150310SP	18	52
B3126012000	16	6	B9121141HA0	30	8	NS6150310SP	20	52
B3127127000	16	12	BP800000000	22	16	NS6160520SP	20	54

NUMERICAL INDEX OF PARTS

PART NO	PAGE	REF NO.	PART NO	PAGE	REF NO.	PART NO	PAGE	REF NO.
NS6660430SP	20	53	SS6661110SP	10	40	SS8660610TP	18	51
NS6680320SP	20	57	SS7080510TP	6	9	SS8660610TP	20	51
NS6680410SP	10	64	SS7090610SP	20	68	SS8660810TP	4	22
NS6680410SP	12	64	SS7090620TP	2	32	SS8681950SP	4	26
NS6680410SP	20	56	SS7090710SP	10	41	SS9182010SN	22	27
NS6740510SP	12	69	SS7091110SP	8	12	SS9660720SP	12	50
PS0300132KH	8	11	SS7091110SP	20	62	TA0750404R0	14	14
PS0300201KP	18	46	SS7110340SP	24	5	TA1250406R0	2	15
PS0350102KR	2	26	SS7110510SP	2	33	WP0501016SD	24	12
RE0400000K0	18	31	SS7110710SP	2	35	WP0621016SD	24	9
RE0500711KP	10	35	SS7110710SP	30	18	WP0650876SD	18	11
RO092270200	12	53	SS7110720SP	2	36	WP1702600S0	26	19
SD0600271SP	16	16	SS7110840SP	8	13	WS0510002KN	26	16
SD0600321SP	16	13	SS7110910SP	20	63	WS1643202KR	26	20
SD0790351SP	22	4	SS7111120SP	12	67	WZ1052010KP	12	54
SD0850751SP	18	24	SS7111120SP	20	64			
SD0950802SH	12	52	SS7111410TP	20	65			
SD0991551SP	22	2	SS7112420SP	2	30			
SD1020961SP	12	66	SS7120910SP	12	45			
SD1020961SP	20	60	SS7120910SP	22	13			
SK3311600SE	28	6	SS7120910TP	20	59			
SK3482500SC	24	11	SS7121410SP	10	43			
SK3483200SE	22	35	SS7150740SP	24	7			
SM4051405SE	26	12	SS7150940SP	30	17			
SM6031202TP	4	15	SS7620750SP	10	44			
SM6051410SC	4	13	SS7681750TP	4	25			
SM6061610SC	26	6	SS8090670SP	16	10			
SM9061203SE	22	33	SS8110410TP	2	37			
SS2090710SP	2	27	SS8110520TP	14	20			
SS2110920TP	2	29	SS8110750SP	8	16			
SS4080620TP	10	36	SS8150510TP	18	66			
SS5090610SP	2	28	SS8150510TP	20	66			
SS6060210SP	2	6	SS8150710SP	4	19			
SS6090670TP	6	13	SS8150710SP	12	47			
SS6110480SP	24	8	SS8150710SP	14	25			
SS6110610TP	2	38	SS8150710SP	16	14			
SS6110710TP	12	65	SS8151150SP	4	20			
SS6111140SP	14	23	SS8151550SP	4	27			
SS6111210SP	14	22	SS8151550SP	6	10			
SS6111610SP	2	31	SS8151550SP	14	26			
SS6121050SP	10	37	SS8620610TP	12	48			
SS6121210SP	10	38	SS8660530TP	20	67			
SS6121210SP	20	61	SS8660610TP	4	23			
SS6151220SP	10	39	SS8660610TP	8	15			
SS6151440SP	18	15	SS8660610TP	10	33			