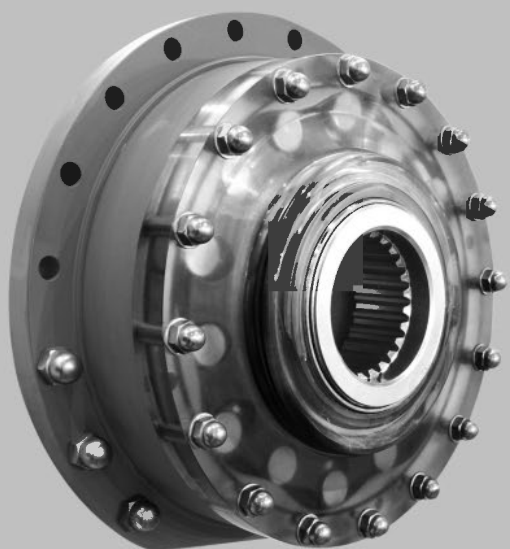




**ГИДРООТВЕТ**  
доступная гидравлика

## **HCA液压马达** **HCA hydraulic motors**



1、产品特点/ Product Feature	113
2、产品标识说明/ Ordering Code	113
3、技术参数/ Technical Specification	114
4、安装联接尺寸/ Installation Dimensions	
HCA50系列/ HCA50 Series	115
HCA70系列/ HCA70 Series	117
HCA100系列/ HCA100 Series	119
HCA140系列/ HCA140 Series	121
HCA210系列/ HCA210 Series	123

# HCA系列/HCA Series

## 产品特点 / Product Feature

HCA系列液压马达是我司针对高端市场所开发的新产品。此产品能在各种恶劣工况下稳定工作，能满足大多数场合下对液压马达的高工作压力、大扭矩输出及低速稳定性等要求。在结构上，这款马达采用端面配流，径向柱塞内曲线形式，利用马达转子中空优势，能方便的根据用户要求配置制动器、测速器，及通过马达中孔的特殊设备，大大减小用户对工作主机结构设计的难度。

其主要特点如下：

- 抗冲击能力强，稳定性好；
- 可实现安全平稳的变量及停车制动；
- 能实现自由轮工况；
- 多种安装方式及中空轴设计；
- 大输出扭矩、宽转速范围，可直接替代高速马达加减速机装置，结构紧凑（体积小）；
- 具有良好的低速稳定性，能在很低的转速下平稳运转；
- 具有较高的机械效率和容积效率；
- 旋转方向可逆；
- 功率质量比高；
- 可靠性好，维修方便。

ECA series' inner curve piston hydraulic motor is what we design for high-end application. With advantage of hollow rotor, ECA motor can be mounted with brake, speed encoder, and some special equipments mounted through the center of motor, according to the user's requirements. It shows its striking features of high pressure endurance, stability at low speed, and high output torque in various inferior working conditions.

Main characteristics:

- Good anti-shock capability and stability;
- Stable speed switch; brake available;
- Enable free running working condition;
- Multi-mounting options; hollow shaft design;
- Large output torque; wide speed range; directly replace combined devices of high speed motor and gearbox; compact structure;
- Stable performance in low speed;
- Higher mechanical and volumetric efficiency;
- Reversible rotation;
- Higher power-mass ratio;
- Higher reliability; easy maintenance;

## 产品标识说明 / Ordering code

\*\* \_\*\*\*\_\*\*\*\_ \* \_ \* \_ \* \_ \*

1 2 3 4 5 6 7

- 1、HCA马达代号 Motor Model \_\_\_\_\_
- 2、型号 Type \_\_\_\_\_
- 3、单位扭矩 Specific Torque(Nm/bar) \_\_\_\_\_
- 4、安装形式 Mounting Alternatives, Shaft \_\_\_\_\_  
 锁紧盘C Shrink Disc Couping  
 内花键S Splines  
 其它O Others
- 5、制动器和其他部件 Multi disc brake or tandem kit \_\_\_\_\_  
 不带制动器或其它部件A Motor without brake or TA kit  
 带制动器或其它部件B Motor prepared for brake or TA kit
- 6、单速O Single Speed Motor \_\_\_\_\_  
 双速顺时针旋转R(从轴端看A口进油) Dual speed motor, rotation clockwise rotation(As view from shaft end and inlet to A port)  
 双速逆时针旋转L(从轴端看A口进油) Dual speed motor, rotation counter clockwise(As view from shaft end and inlet to A port)
- 7、密封件 Type of Seal \_\_\_\_\_  
 丁腈橡胶N Nitrile  
 氟橡胶V Viton

# HCA系列/HCA Series

## 技术参数 / Technical Specification

马达型号 TYPE	排量 Displacement	单位扭矩 Unit Torque	额定压力 Rated Pressure	最大压力 Max. Pressure	额定扭矩 Rated Torque	额定转速 Rated Speed	最大转速 Max. Speed	重量(花键) Weight ( Spline )	重量(锁紧盘) Weight ( Shrink Disc Coupling )
	ml/r	N.m/bar	bar	bar	N.m	r/min	r/min	Kg	Kg
HCA50-20	1,256	20	250	315	5,000	340	340	175	203
HCA50-25	1,570	25	250	315	6,250	298	340		
HCA50-32	2,010	32	250	315	8,000	238	340		
HCA50-40	2,512	40	250	315	10,000	196	298		
HCA50-50	3,140	50	250	315	12,500	170	238		
HCA70-40	2,512	40	250	315	10,000	230	340	205	232
HCA70-50	3,140	50	250	315	12,500	191	272		
HCA70-60	3,771	60	250	315	15,000	166	234		
HCA70-70	4,400	70	250	315	17,500	153	204		
HCA100-40	2,512	40	250	315	10,000	332	340	265	310
HCA100-50	3,140	50	250	315	12,500	272	340		
HCA100-64	4,020	64	250	315	16,000	221	332		
HCA100-80	5,024	80	250	315	20,000	187	264		
HCA100-100	6,280	100	250	315	25,000	162	230		
HCA140-80	5,024	80	250	315	20,000	208	289	305	347
HCA140-100	6,280	100	250	315	25,000	174	234		
HCA140-120	7,543	120	250	315	30,000	153	208		
HCA140-140	8,800	140	250	315	35,000	145	187		
HCA210-160	10,051	160	250	315	40,000	89	128	395	456
HCA210-180	11,314	180	250	315	45,000	85	115		
HCA210-210	13,200	210	250	315	52,500	72	98		



HFM

HGM

QJM

H-HMB

H-HMC

HCA

HCB

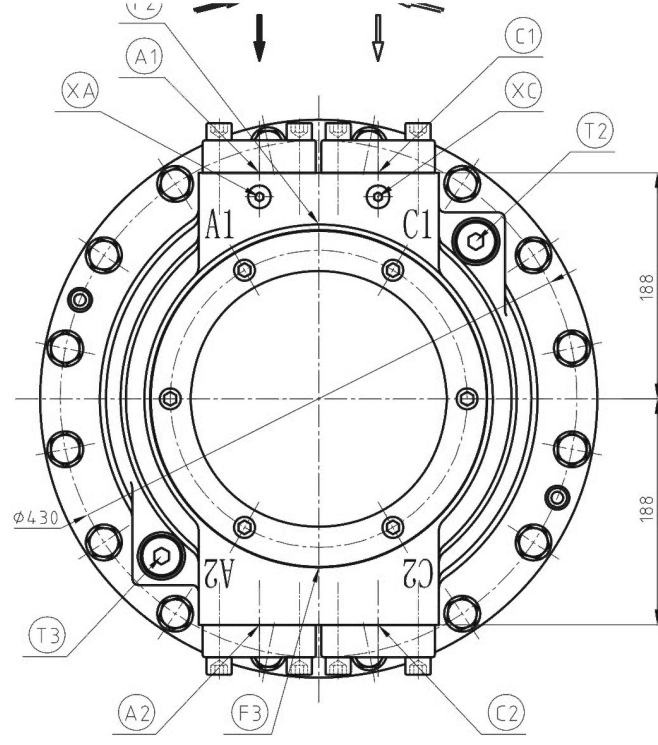
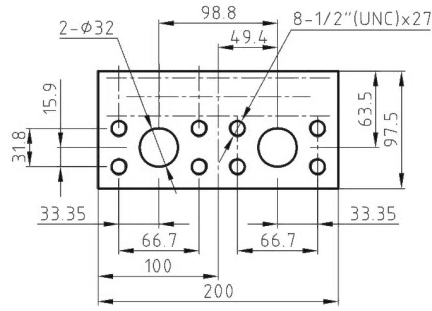
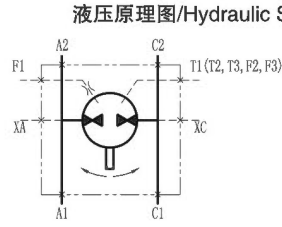
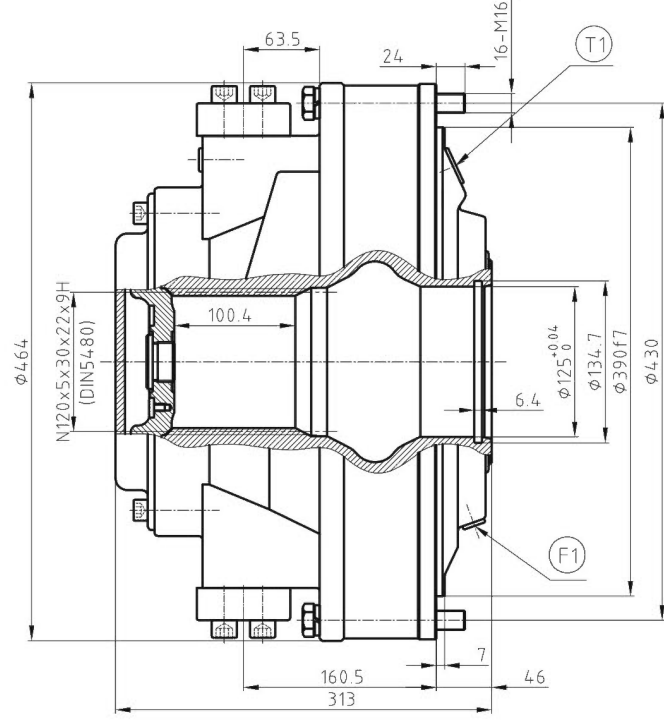
HMS

HA6V

HA2F

# HCA50系列/HCA50 Series

## HCA50 外形及安装尺寸/HCA50 Installation Dimensions



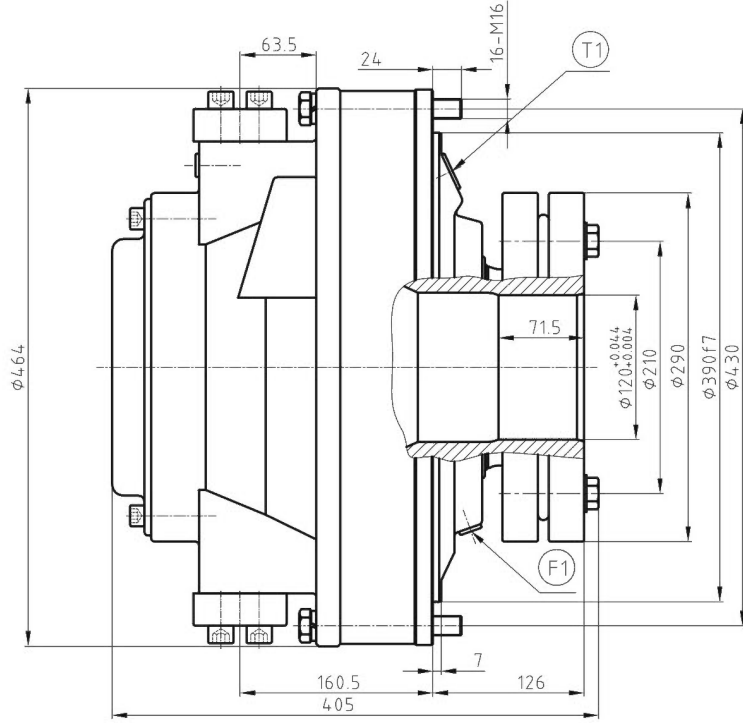
油口尺寸/Connection

主油口A Main Conn.A		主油口C Main Conn.C		泄油口 Drain Conn.			冲洗油口 Flushing Conn.			测压口 Test Conn.	
A1	A2	C1	C2	T1	T2	T3	F1	F2	F3	XA	XC
SAE 1 1/4"		SAE 1 1/4"		BSP3/4"			BSP1/4"			BSP1/4"	

# HCA50系列/HCA50 Series

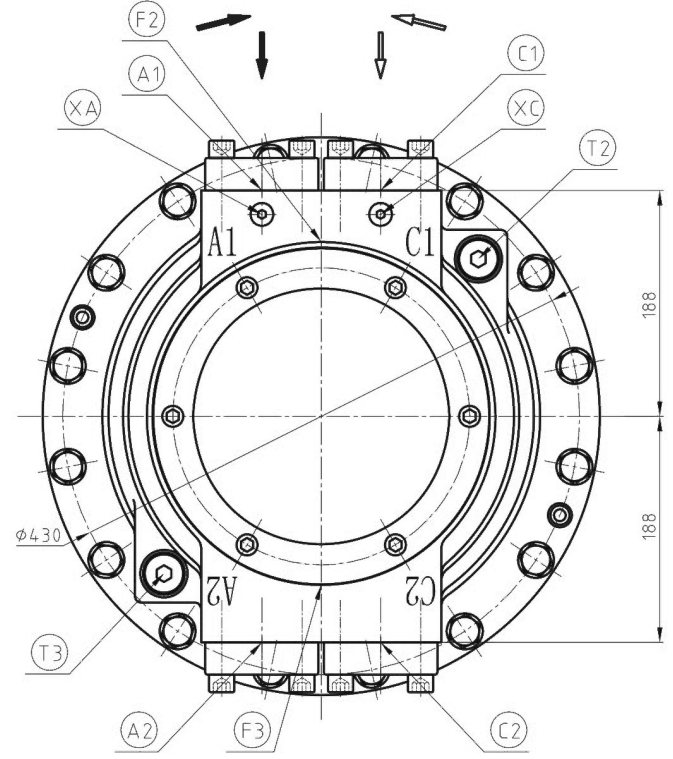
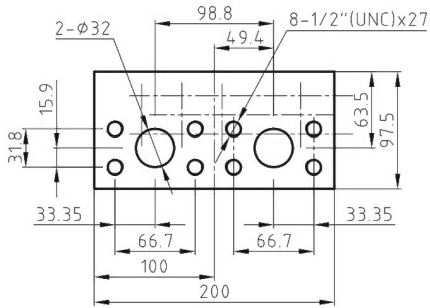
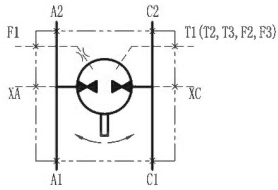
www.hydrootvet.ru

## HCA50 外形及安装尺寸/ HCA50 Installation Dimensions



A,C油口/Conn.A,C

### 液压原理图/Hydraulic Schematic

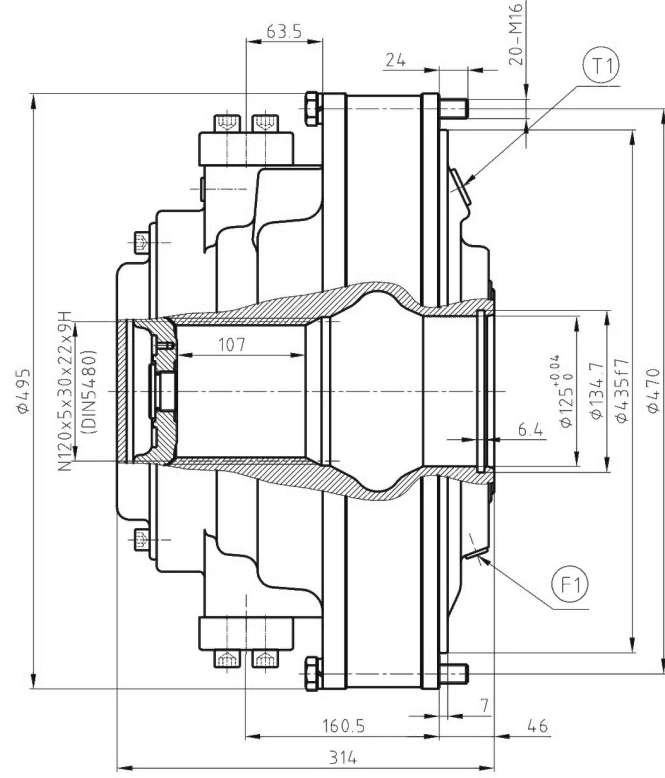


油口尺寸/Connection

主油口A Main Conn.A		主油口C Main Conn.C		泄油口 Drain Conn.			冲洗油口 Flushing Conn.			测压口 Test Conn.	
A1	A2	C1	C2	T1	T2	T3	F1	F2	F3	XA	XC
SAE 1 1/4"		SAE 1 1/4"		BSP3/4"			BSP1/4"			BSP1/4"	

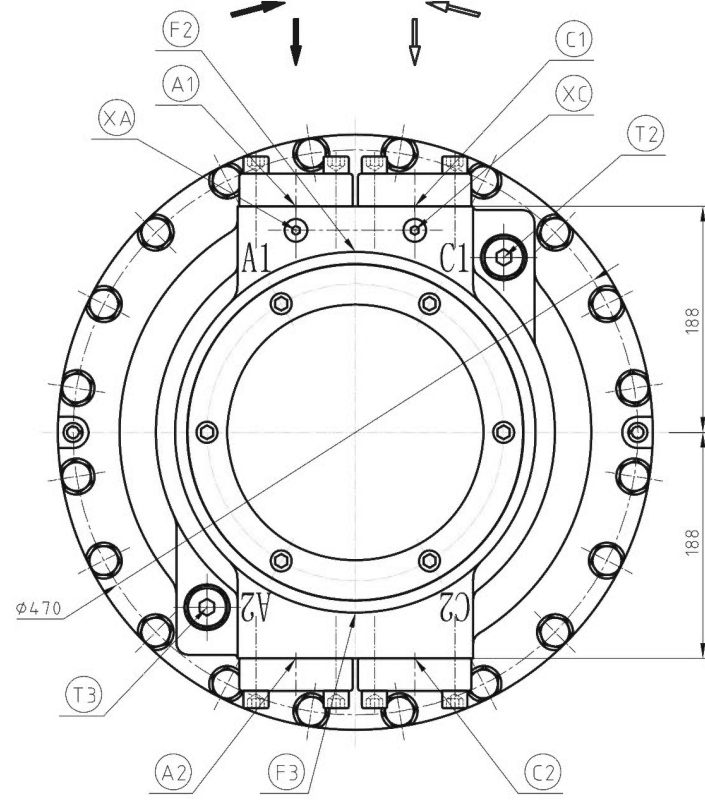
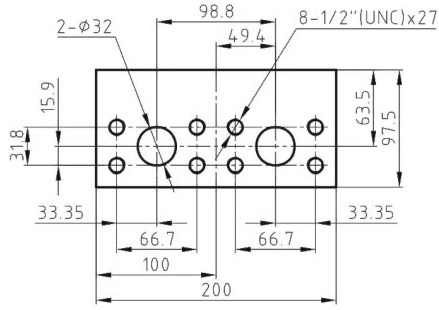
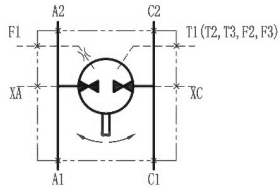
# HCA70系列/HCA70 Series

HCA70 外形及安装尺寸/HCA70 Installation Dimensions



A,C油口/Conn.A,C

液压原理图/Hydraulic Schematic



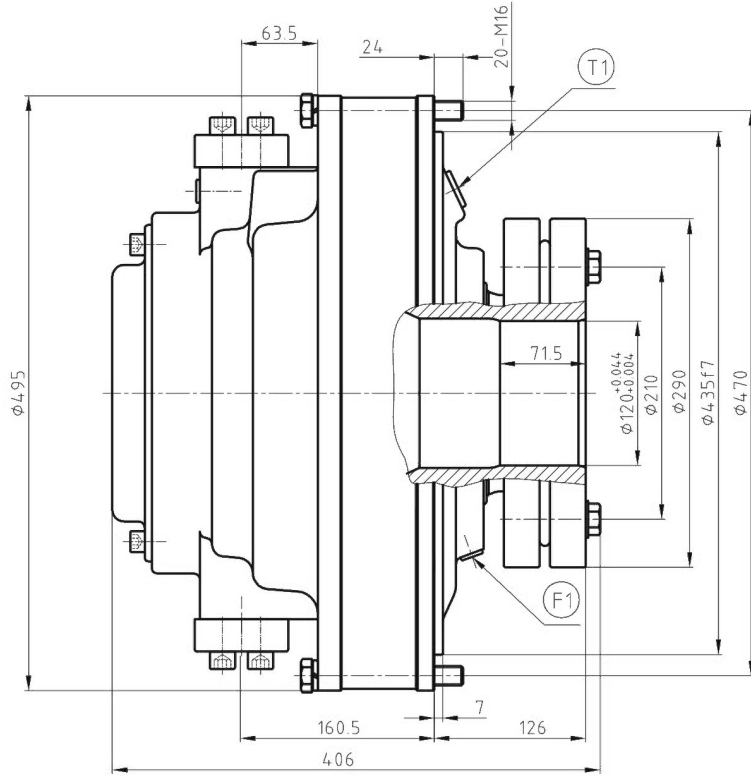
油口尺寸/Connection

主油口A Main Conn.A		主油口C Main Conn.C		泄油口 Drain Conn.			冲洗油口 Flushing Conn.			测压口 Test Conn.	
A1	A2	C1	C2	T1	T2	T3	F1	F2	F3	XA	XC
SAE 1 1/4"		SAE 1 1/4"		BSP3/4"			BSP1/4"			BSP1/4"	

# HCA70系列/HCA70 Series

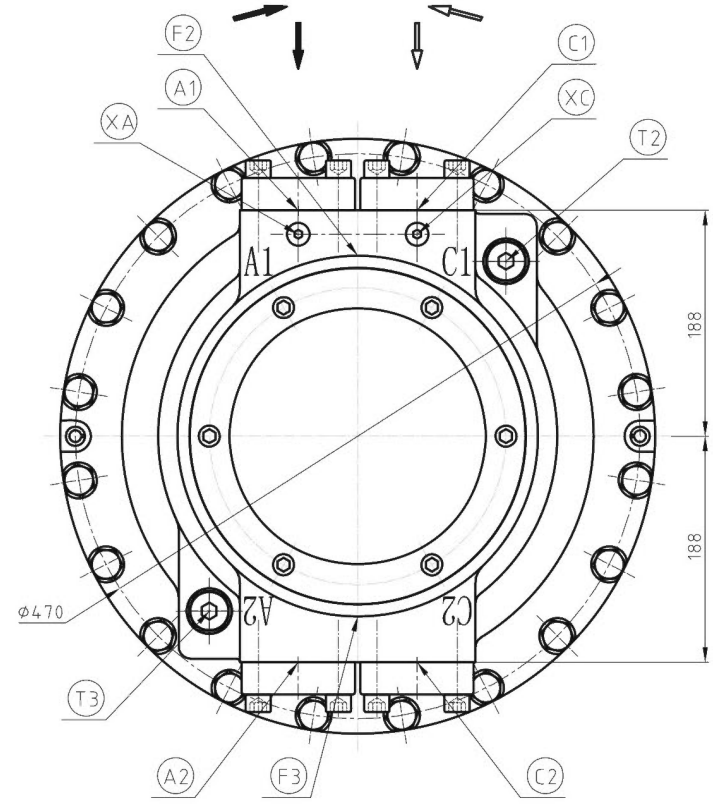
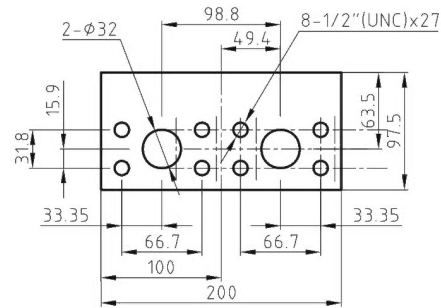
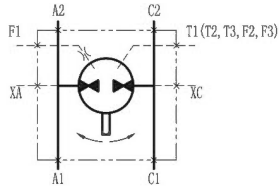
www.hydrootvet.ru

HCA70 外形及安装尺寸/HCA70 Installation Dimensions



A,C油口/Conn.A,C

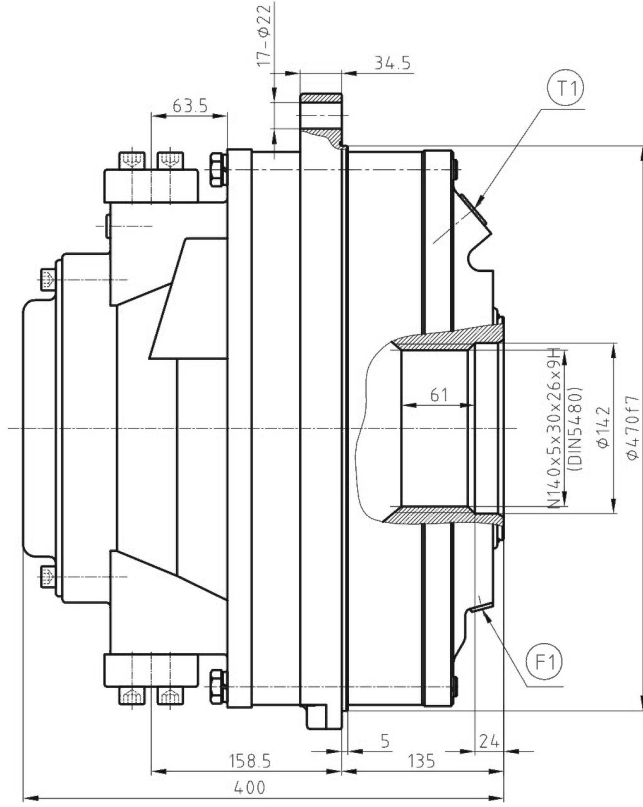
液压原理图/Hydraulic Schematic



油口尺寸/Connection

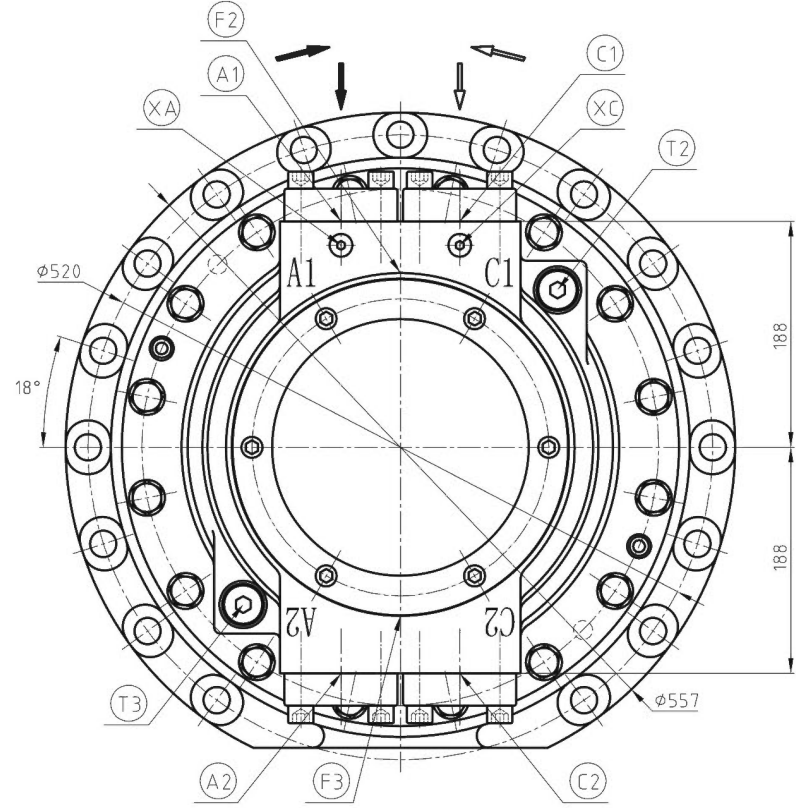
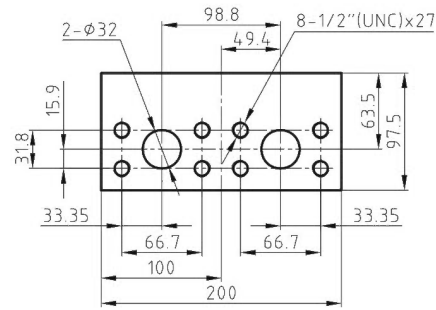
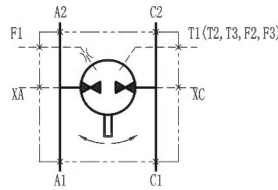
主油口A Main Conn.A		主油口C Main Conn.C		泄油口 Drain Conn.			冲洗油口 Flushing Conn.			测压口 Test Conn.	
A1	A2	C1	C2	T1	T2	T3	F1	F2	F3	XA	XC
SAE 1 1/4"		SAE 1 1/4"		BSP3/4"			BSP1/4"			BSP1/4"	

## HCA100 外形及安装尺寸/HCA100 Installation Dimensions



A,C油口/Conn.A,C

### 液压原理图/Hydraulic Schematic



油口尺寸/Connection

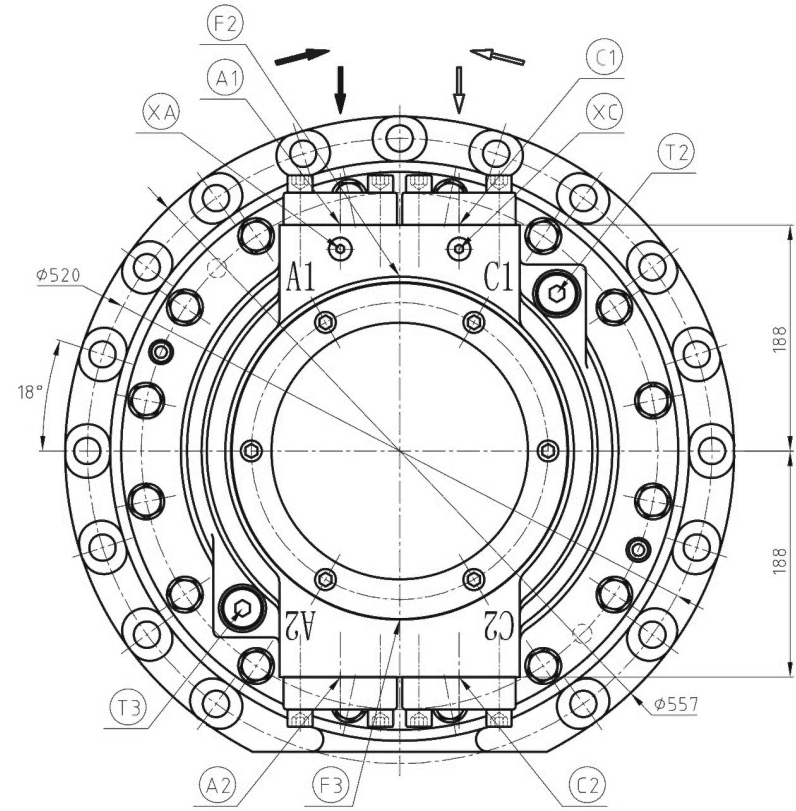
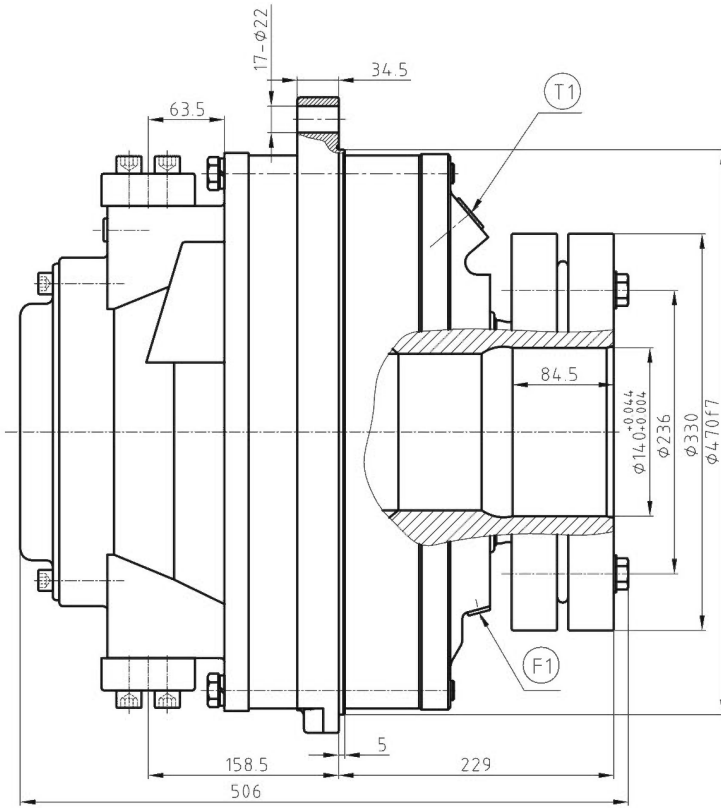
主油口A Main Conn.A		主油口C Main Conn.C		泄油口 Drain Conn.			冲洗油口 Flushing Conn.			测压口 Test Conn.	
A1	A2	C1	C2	T1	T2	T3	F1	F2	F3	XA	XC
SAE 1 1/4"		SAE 1 1/4"		BSP3/4"			BSP1/4"			BSP1/4"	



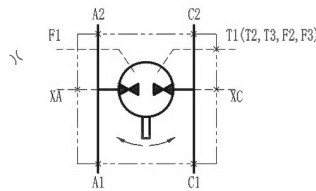
# HCA100系列/HCA100 Series

www.hydrootvet.ru

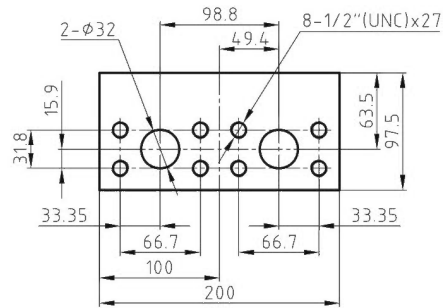
HCA100 外形及安装尺寸/HCA100 Installation Dimensions



液压原理图/Hydraulic Schematic



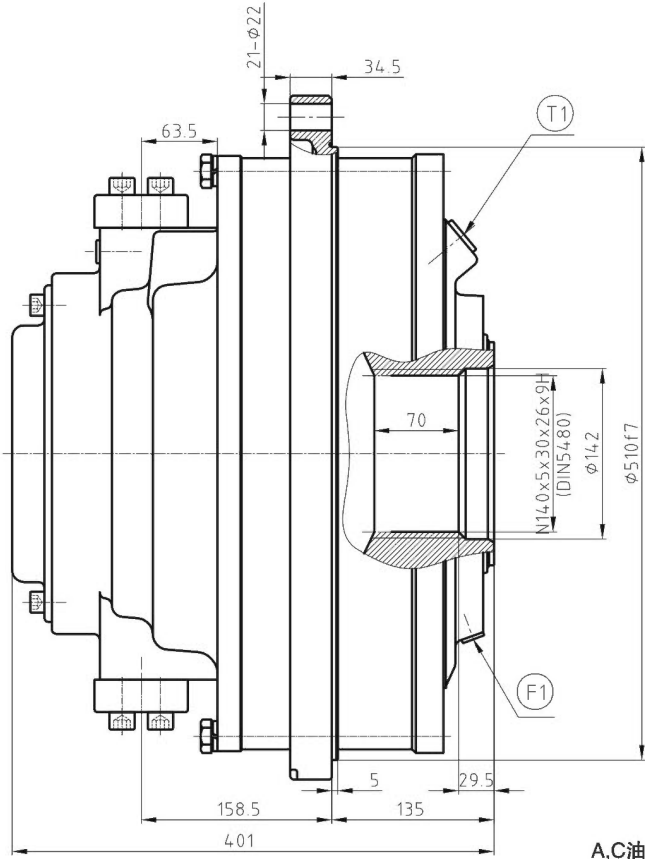
A,C油口/Conn.A,C



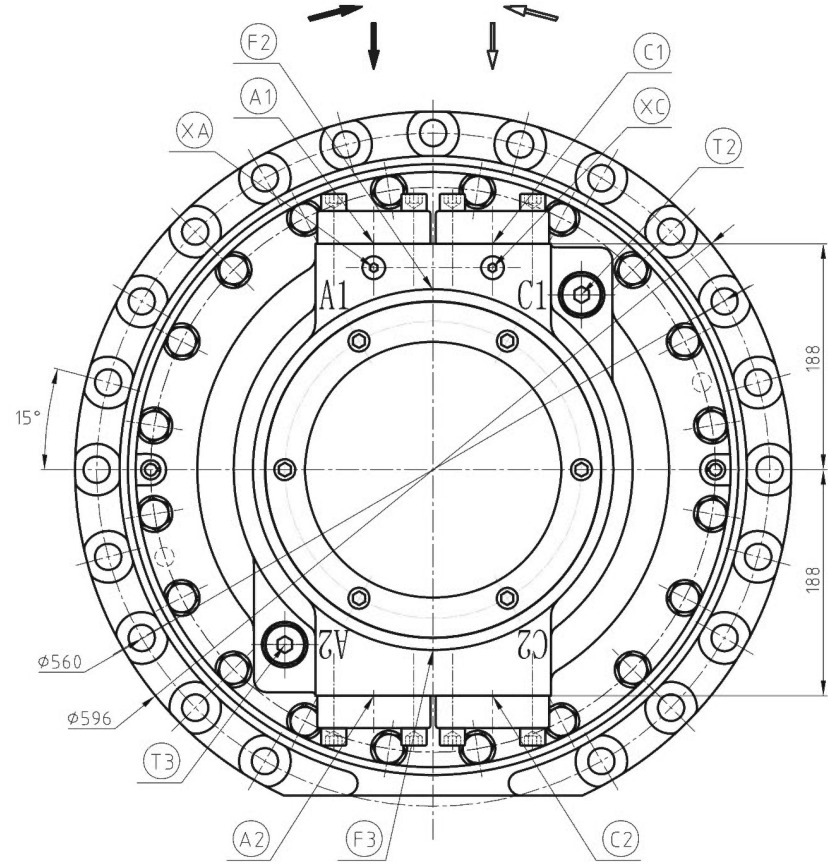
油口尺寸/Connection

主油口A Main Conn.A		主油口C Main Conn.C		泄油口 Drain Conn.			冲洗油口 Flushing Conn.			测压口 Test Conn.	
A1	A2	C1	C2	T1	T2	T3	F1	F2	F3	XA	XC
SAE 1 1/4"		SAE 1 1/4"		BSP3/4"			BSP1/4"			BSP1/4"	

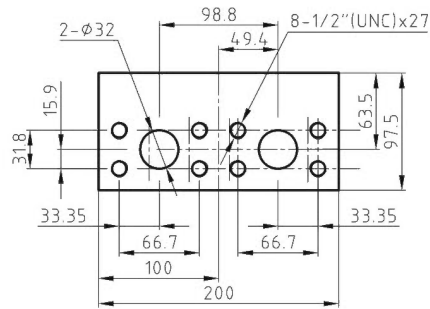
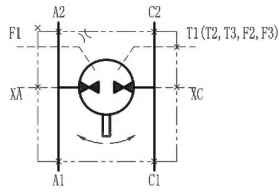
## HCA140 外形及安装尺寸/HCA140 Installation Dimensions



A,C油口/Conn.A,C



液压原理图/Hydraulic Schematic



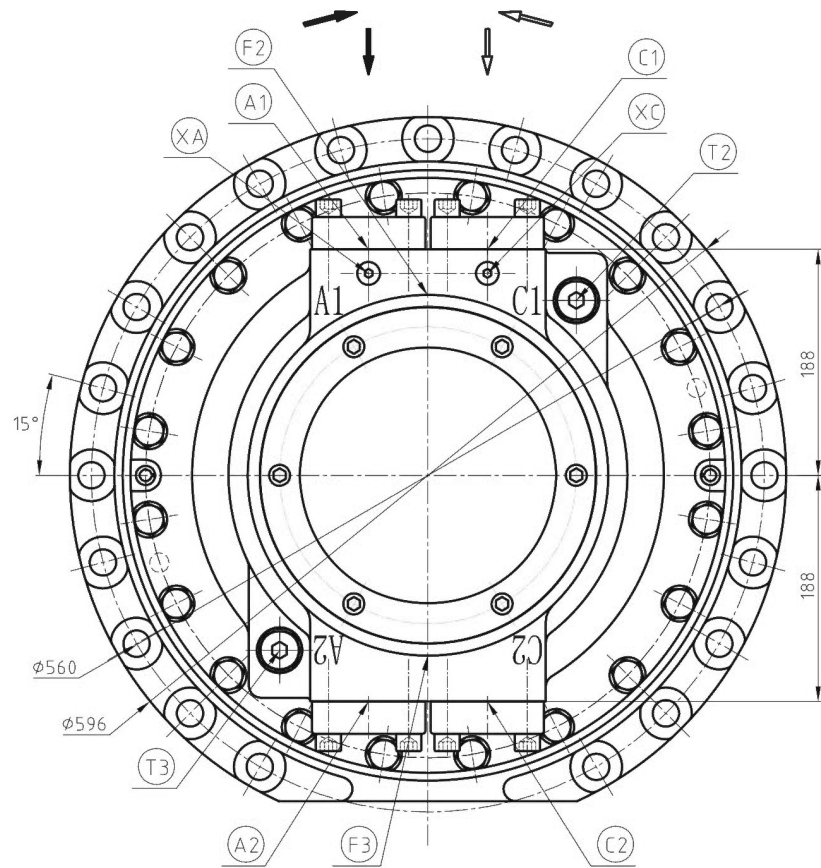
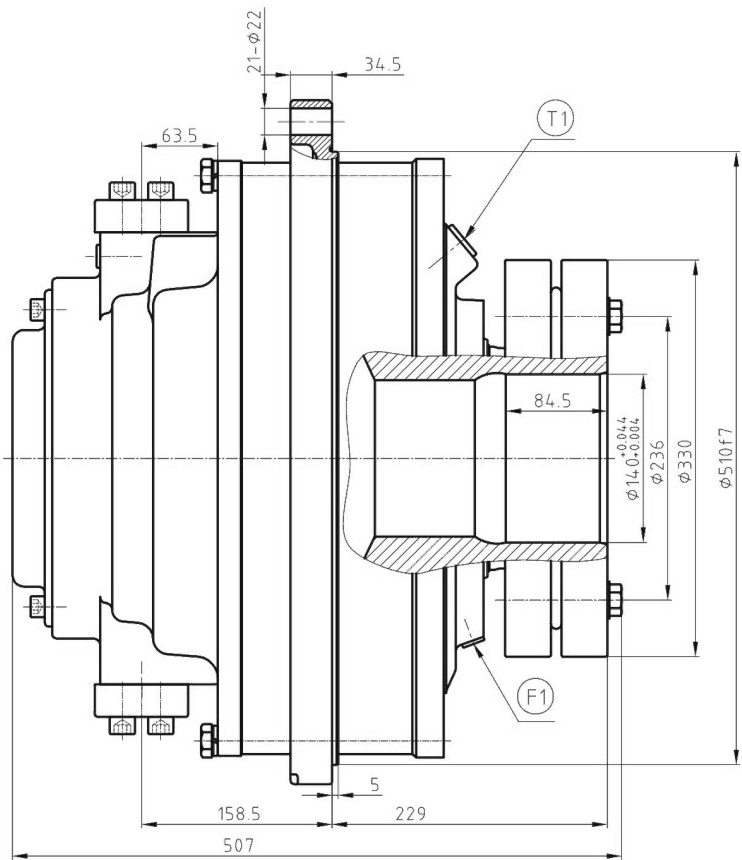
油口尺寸/Connection

主油口A Main Conn.A		主油口C Main Conn.C		泄油口 Drain Conn.			冲洗油口 Flushing Conn.			测压口 Test Conn.	
A1	A2	C1	C2	T1	T2	T3	F1	F2	F3	XA	XC
SAE 1 1/4"		SAE 1 1/4"		BSP3/4"			BSP1/4"			BSP1/4"	

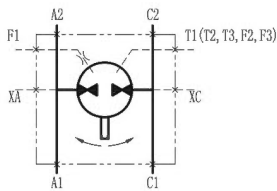
# HCA140系列/HCA140 Series

www.hydrootvet.ru

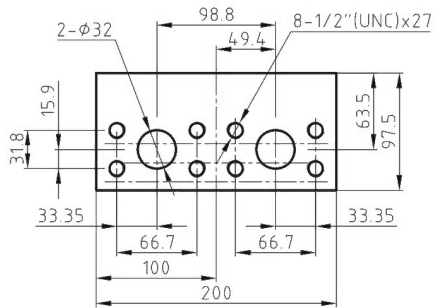
HCA140 外形及安装尺寸/ HCA140 Installation Dimensions



液压原理图/Hydraulic Schematic



A,C油口/Conn.A,C

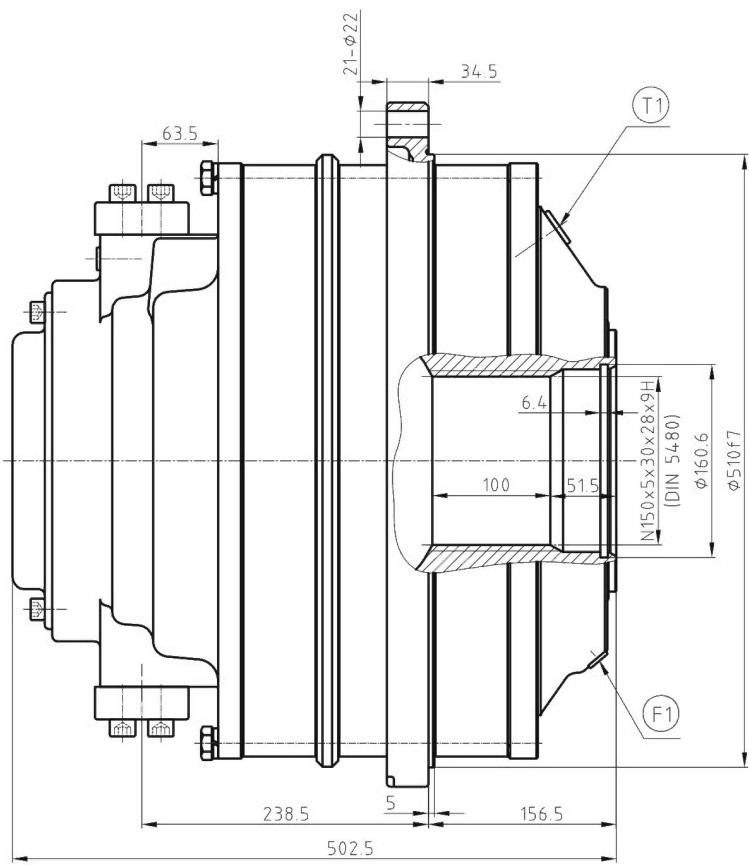


油口尺寸/Connection

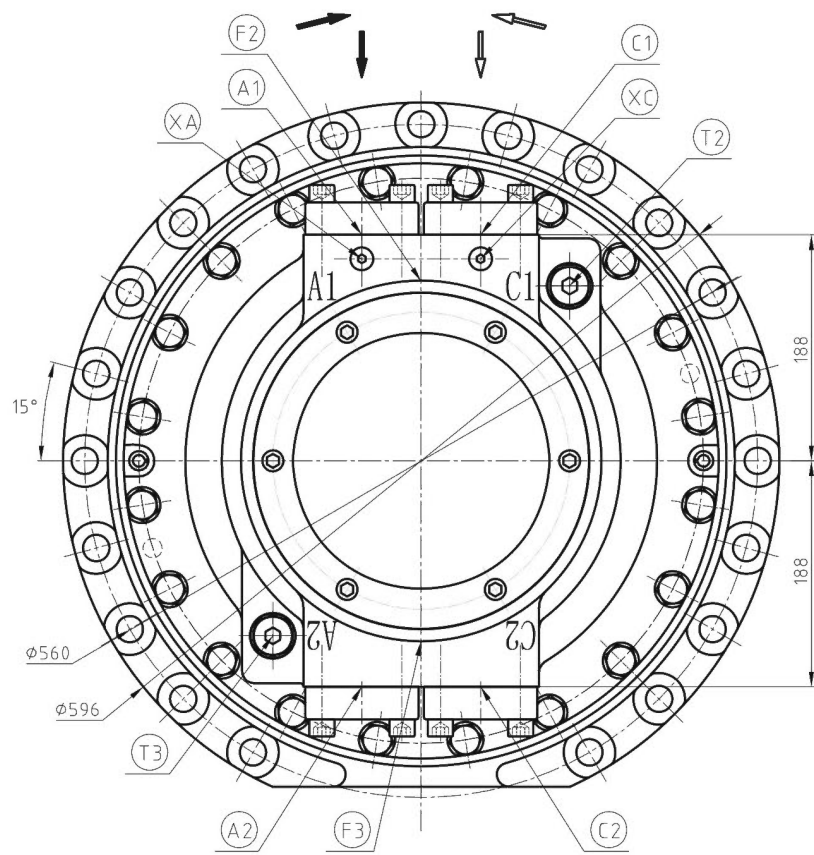
主油口A Main Conn.A		主油口C Main Conn.C		泄油口 Drain Conn.			冲洗油口 Flushing Conn.			测压口 Test Conn.	
A1	A2	C1	C2	T1	T2	T3	F1	F2	F3	XA	XC
SAE 1 1/4"		SAE 1 1/4"		BSP3/4"			BSP1/4"			BSP1/4"	

# HCA210系列/HCA210 Series

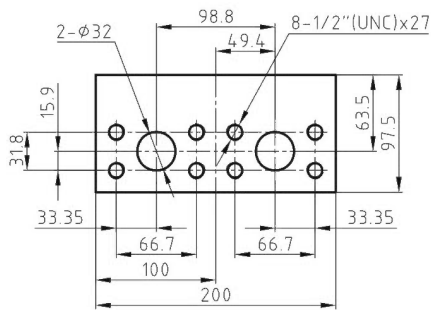
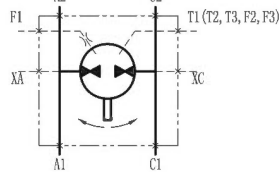
HCA210 外形及安装尺寸/HCA210 Installation Dimensions



A,C油口/Conn.A,C



液压原理图/Hydraulic Schematic



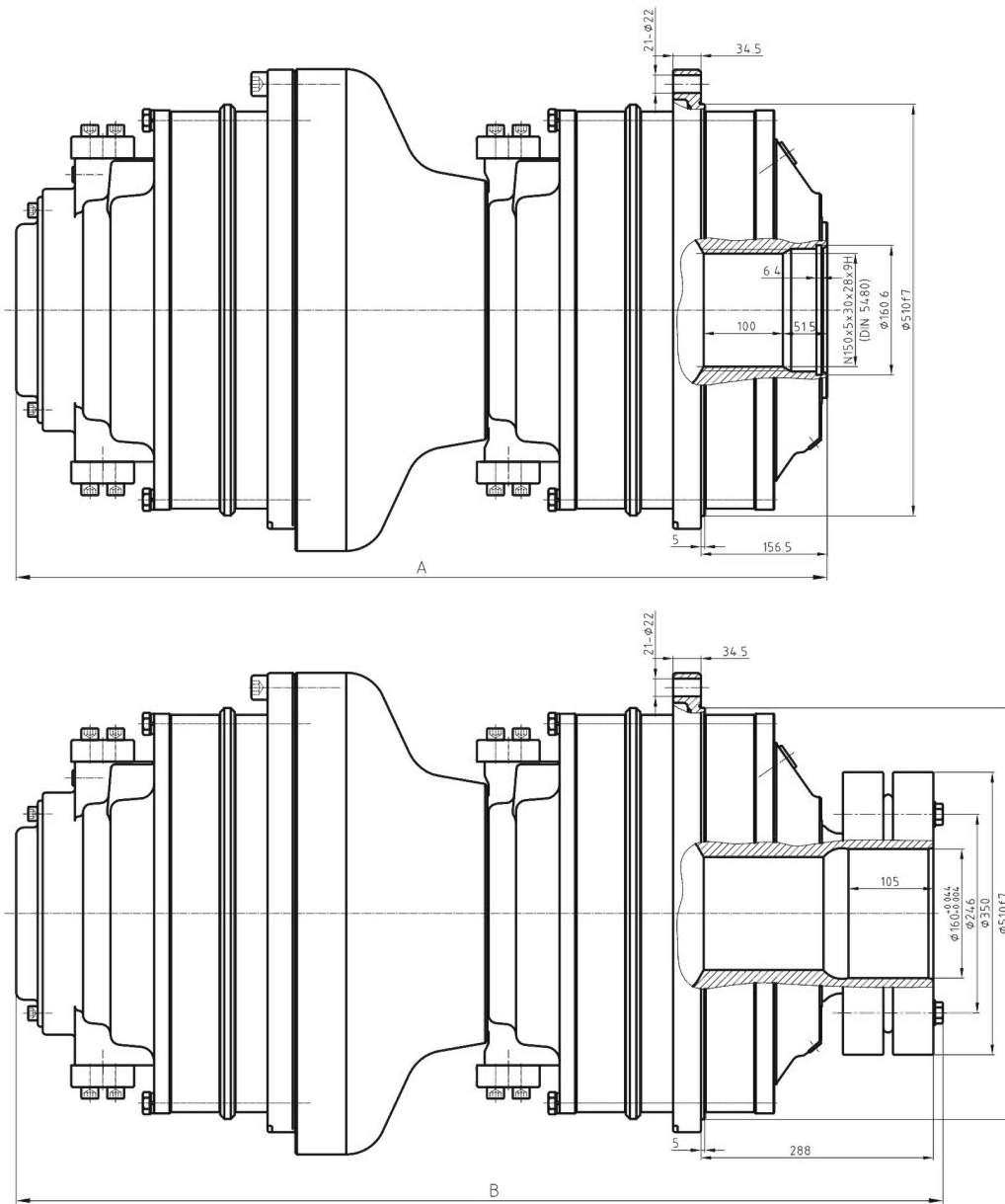
油口尺寸/Connection

主油口A Main Conn.A		主油口C Main Conn.C		泄油口 Drain Conn.			冲洗油口 Flushing Conn.			测压口 Test Conn.	
A1	A2	C1	C2	T1	T2	T3	F1	F2	F3	XA	XC
SAE 1 1/4"		SAE 1 1/4"		BSP3/4"			BSP1/4"			BSP1/4"	



# HCA210系列/HCA210 Series

HCA210 串联马达/ HCA210 Motor Connected in Series



马达型号 TYPE	最大压力 Max. Pressure	最大转速 Max. Speed	重量(花键) Weight(Spline)	重量(锁紧盘) Weight(shrink disc coupling)	尺寸A Size A	尺寸B Size B
	bar	r/min	Kg	Kg	mm	mm
HCA210+ECA50	240	98	619	680	826	969
HCA210+DC70	220		652	713	826	969
HCA210+DC100	200		768	829	924	1067
HCA210+DC140	180		808	869	924	1067
HCA210+DC210	160		898	959	1004	1147