

## Isolating valve

Model: Z4WE6...3XJ



- ◆ Size 6
- ◆ Maximum working pressure 315 bar
- ◆ Maximum working flow 40 L/min

### Contents

Function description, sectional drawing	02
Models and specifications	02
Functional symbols	03
Technical parameters	03
Electrical parameters	03
Characteristic curve	04
Characteristic limit	04
Component size	05-06

### Features

- Directional spool valve operated by solenoid
- Control the opening and closing of the oil
- The manual emergency operation controls the movement of the control spool when solenoid de-energized

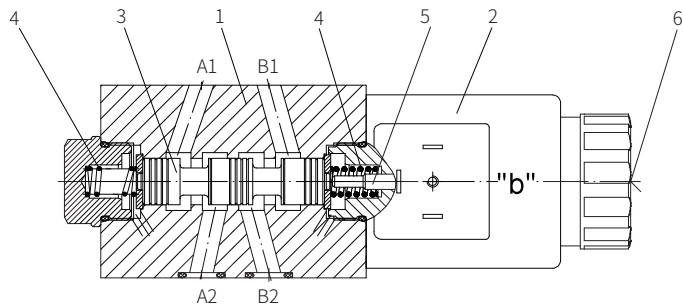
Function description, sectional drawing

The Z4WE6 isolating valve is solenoid operated directional spool valve. It controls the opening and closing of the oil.

The valve is composed of valve body (1), one or two solenoids (2), control spool (3) and 2 reset springs (4). In the de-energised condition, the control spool(3) is held in the neutral or initial position by reset spring (4), the control spool (3) is controlled via wet-pin solenoid (2). To ensure proper function, the pressure chamber of the solenoid must be filled with oil.

The force of the solenoid (2) via push rod (5) acts on control spool (3) and pushes it from the stationary position to the required position. Then port A1, A2, B1 and B2 can be either connected or disconnected. The port P and T always flow freely.

When the solenoid (2) is de-energised, the control spool (3) is returned to the neutral position via reset spring (4). The manual emergency operation controls the movement of the control spool when solenoid de-energized.



Model: Z4WE6...XJ/

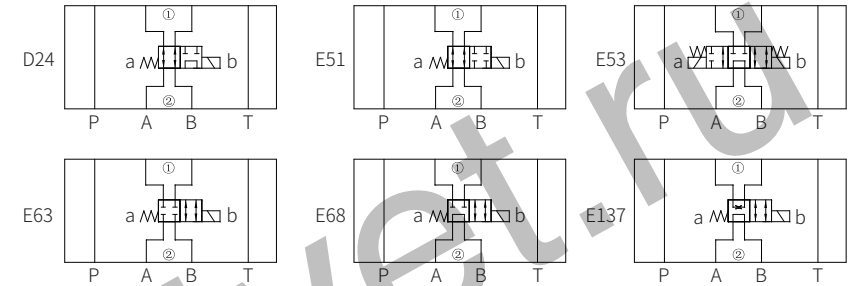
Models and specifications

Z4WE	6	-3X	J	C			*
isolating valve	size 6 =6	symbols e.g.: D24, E63... 30 to 39 series (30 to 39 series installation and connection size unchanged)	Rekith	wet-pin solenoid	more information in text		
					Z4= standard plug (not for rectified type)	Z5L= large right angle lamp plug	N9= with hidden manual emergency operation
					G24= 24V DC	W220R= 220VAC with rectifier	W110R= 110VAC with rectifier
					other voltages see technical parameters		

Note: If AC voltage used, it is recommended to use the rectified AC voltage

Functional symbols

(①= Valve side, ②= Subplate side)



Technical parameters

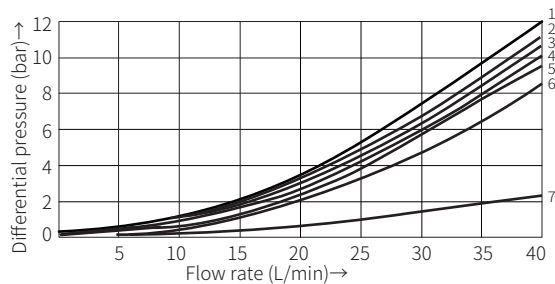
Installation position	Optional	
Environment temperature range	°C	-30 to + 50 (NBR seal) -20 to + 50 (FKM seal)
Weight	Valve with one solenoid	kg 1.5
	Valve with two solenoids	kg 2.0
Maximum working pressure	Oil port A, B, P	bar 315
	Oil port T	bar 210 (DC) , 160 (AC)
Maximum flow	L/min	40
Working medium	Mineral oil - for NBR seals or FKM seals Phosphonolipid - for FKM seals	
Working medium temperature range	°C	-30 to + 80 (NBR seal) -20 to + 80 (FKM seal)
Viscosity range	mm²/s	2.8 to 500
Cleanliness of oil	The maximum allowable pollution level of oil is ISO4406 Class 20 / 18 / 15	

Electrical parameters

Voltage type		DC	AC 50/60Hz
Voltage available	V	12, 24, 96, 110, 205, 220	110, 220, 230
Allowable voltage tolerance	%	+10 to -15	
Power consumption(DC)	W	30	-
Holding power(AC)	VA	-	50
Impact power(AC)	VA	-	220
Power rate		continuous	
Switching time to	on	ms 20 to 45	10 to 20
	off	ms 10 to 25	15 to 40
Switching frequency	times/h	to 15000	to 7200
Protection grade to DIN 40050		IP 65	

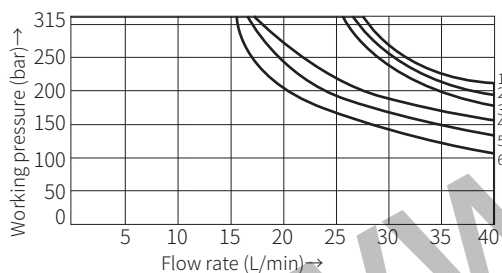
Note:  
When electrical connection, the protective conductor (PE) must be connected properly as rules.

Characteristic curve

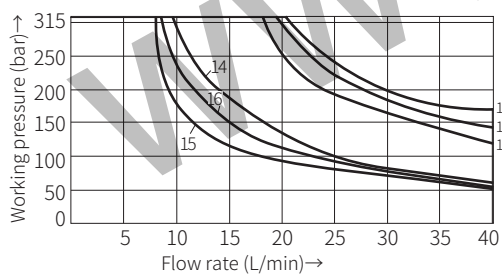


	A2 to A1	A1 to A2	B2 to B1	B1 to B2	A2 to B2	B2 to A2	T2 to T2	P2 to P1
D24	4	1	2	4	3	2	7	7
E51	3	1	1	3	-	-	7	7
E53	2	2	2	2	5	2	7	7
E63	2	5	5	3	-	-	7	7
E68	4	4	6	5	4	5	7	7
E137	1	4	3	2	5	6	7	7

Characteristic limit



1 E63 1 E51  
 2 E68 2 E137  
 3 E53 3 D24  
 (Measured when using HLP46,  
 $\vartheta_{oil} = 40^{\circ}\text{C} \pm 5^{\circ}\text{C}$  and 24VDC)



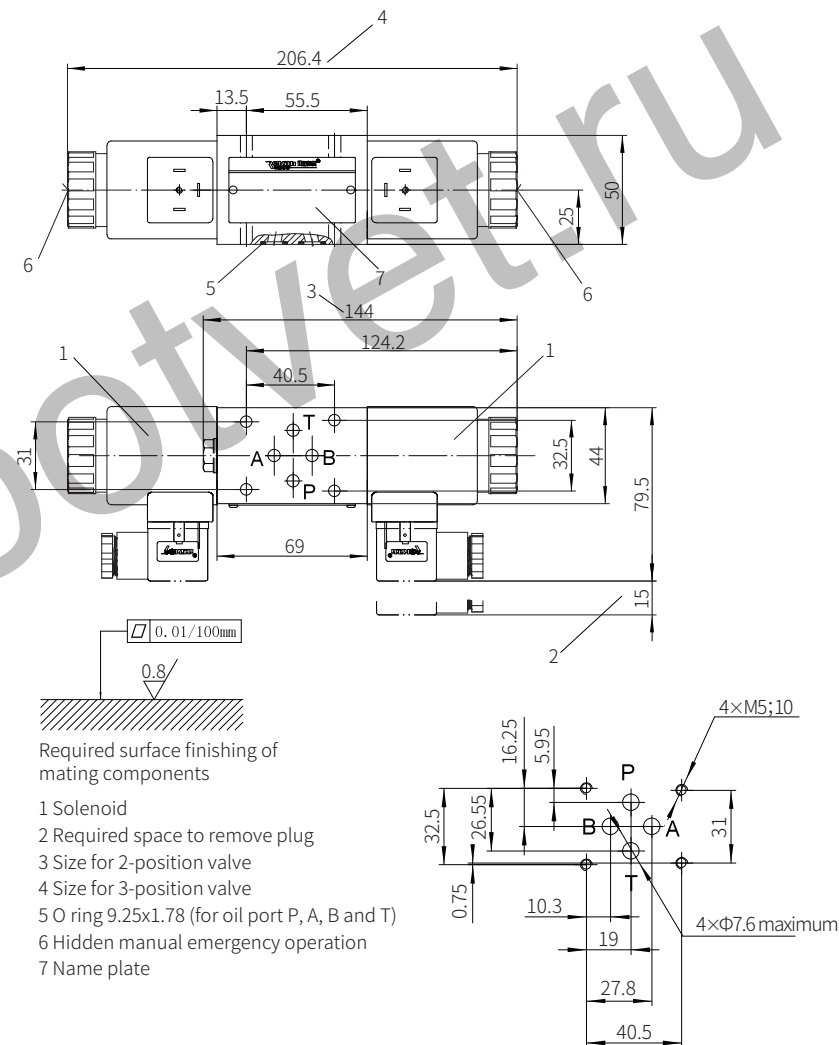
	W230-50Hz	W230-60Hz
E63	11	14
E68	12	16
E53	13	16
E137	15	15
E51	15	15
D24	15	15

(Measured when using HLP46,  
 $\vartheta_{oil} = 40^{\circ}\text{C} \pm 5^{\circ}\text{C}$  and 230VAC)

Component size

Size unit: mm

Valve with DC or AC rectified solenoid



Required surface finishing of mating components

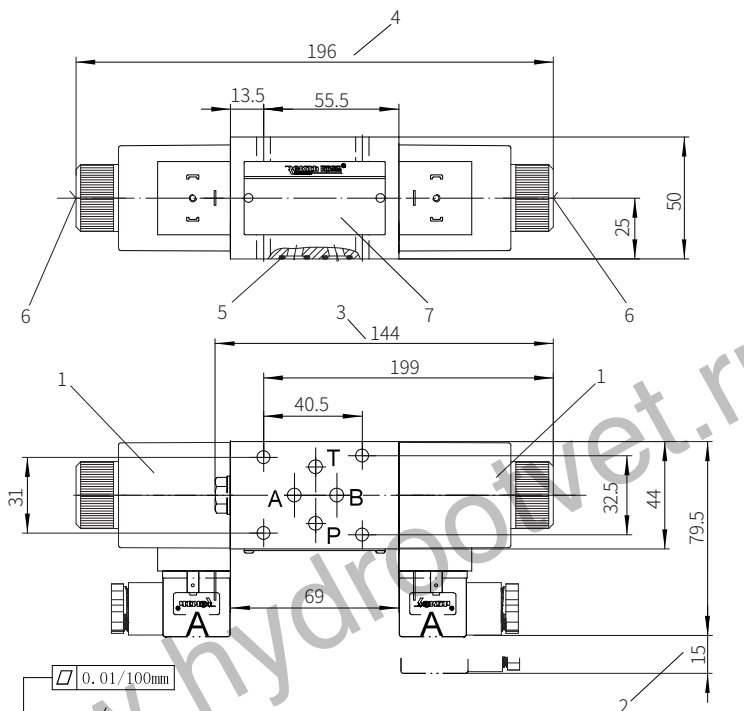
- 1 Solenoid
- 2 Required space to remove plug
- 3 Size for 2-position valve
- 4 Size for 3-position valve
- 5 O ring 9.25x1.78 (for oil port P, A, B and T)
- 6 Hidden manual emergency operation
- 7 Name plate

It must be ordered separately if connection subplate is needed.  
 Subplate model:

- G341/01(G1/4"); G341/02(M14x1.5)
- G342/01(G3/8"); G342/02(M18x1.5)
- G502/01(G1/2"); G502/02(M22x1.5)

Valve fixing screw  
 M5-10.9 grade GB/T70.1-2000  
 Tightening torque  $M_A = 7.8\text{Nm}$

Valve with AC solenoid



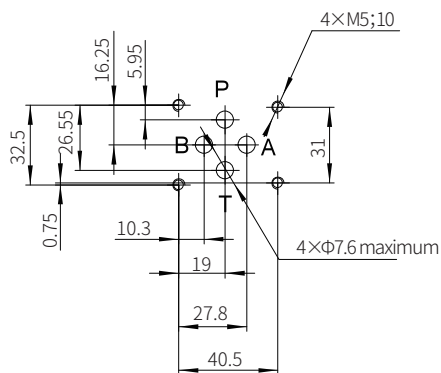
Required surface finishing of mating components

- 1 Solenoid
- 2 Required space to remove plug
- 3 Size for 2-position valve
- 4 Size for 3-position valve
- 5 O ring 9.25x1.78 (for oil port P, A, B and T)
- 6 Hidden manual emergency operation
- 7 Name plate

It must be ordered separately if connection subplate is needed.

Subplate model:

- G341/01(G1/4"); G341/02(M14x1.5)
- G342/01(G3/8"); G342/02(M18x1.5)
- G502/01(G1/2"); G502/02(M22x1.5)



Valve fixing screw

M5-10.9 grade GB/T70.1-2000

Tightening torque  $M_A = 7.8 \text{ Nm}$