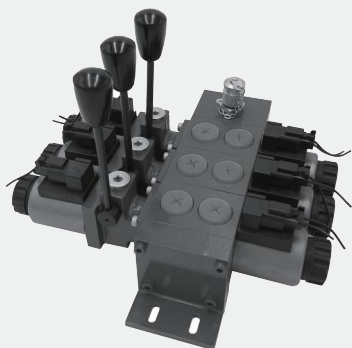


Solenoid Operated Directional Multi-way Valve

Model: DCF6...1X



ГИДРООТВЕТ
доступная гидравлика



- ◆ Size 6
- ◆ Maximum working pressure 15 bar
- ◆ Maximum working flow 40 L/min

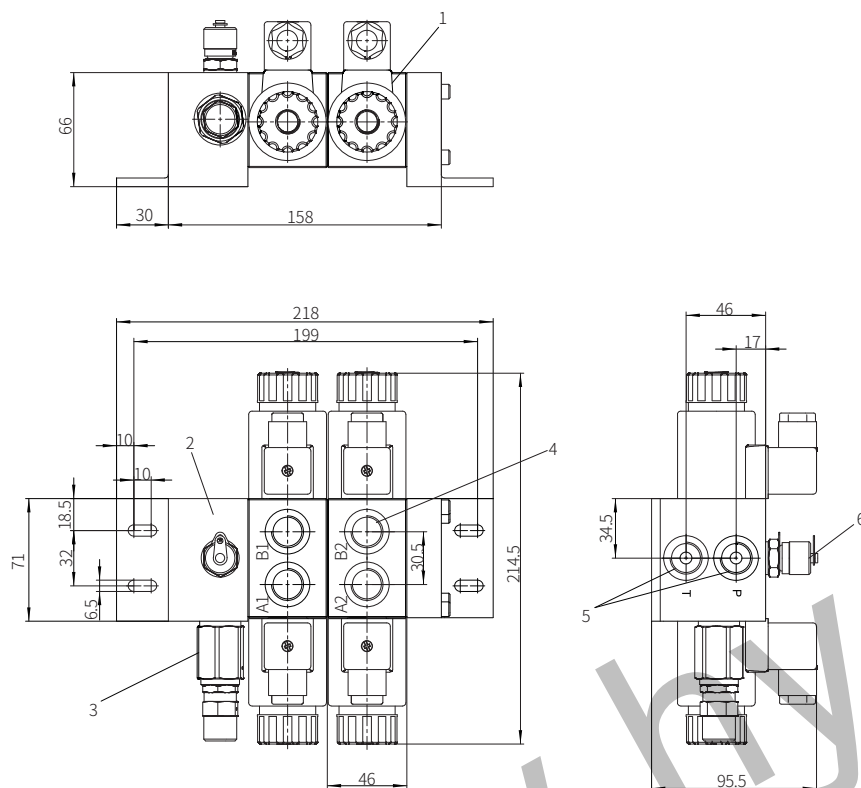
Contents

Function description, sectional drawing	02
Models and specification	03
Technical parameters	03
Component size and functional principle	04-07

Features

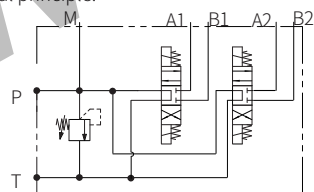
- Working port threaded connection
- Manual operated handle, optional
- Operated by solenoid
- Multiple units, optional
- Integrated relief valve
- Integrated hydraulic lock, optional

Model DCF6...-1XJ/...C...



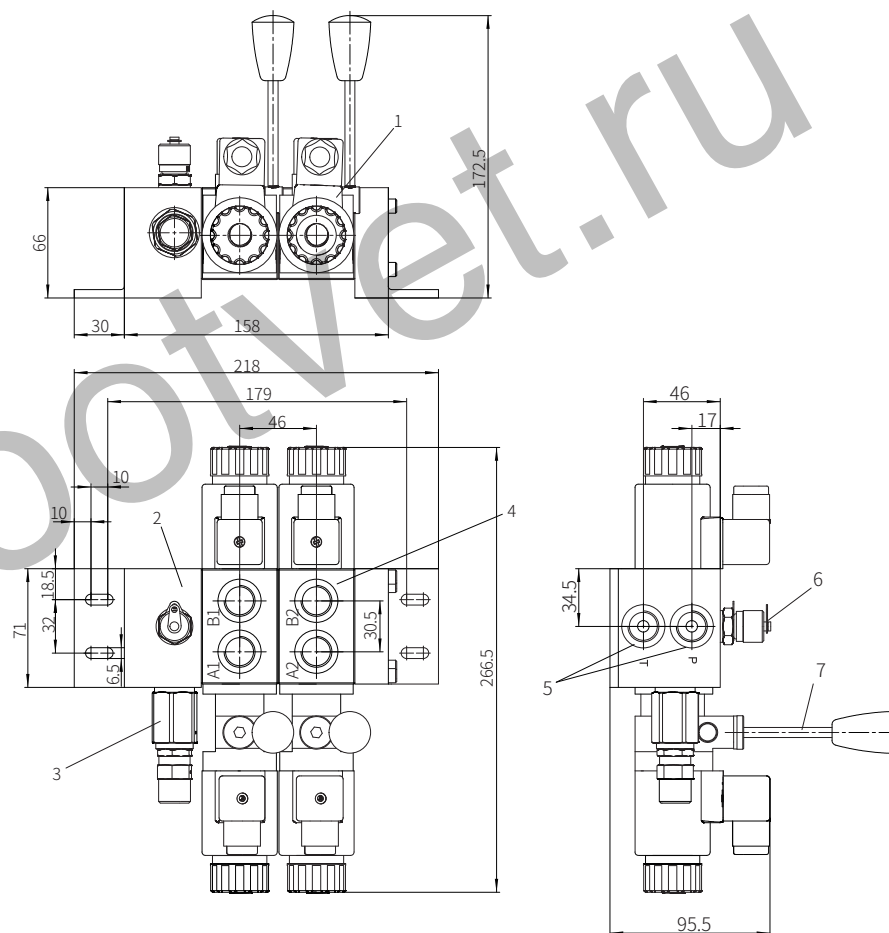
- 1 Sectional solenoid directional valve
- 2 Oil inlet section
- 3 Optional relief valve
- 4 Working port G3/8"
- 5 Inlet and outlet port G3/8"
- 6 Pressure measuring port G1/4"

Functional principle:



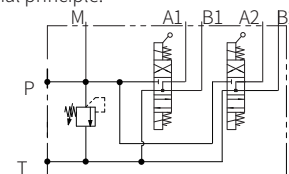
Note: The corresponding work units can be added according to the requirements from the customers.

Model DCF6...-1XJ/...B...



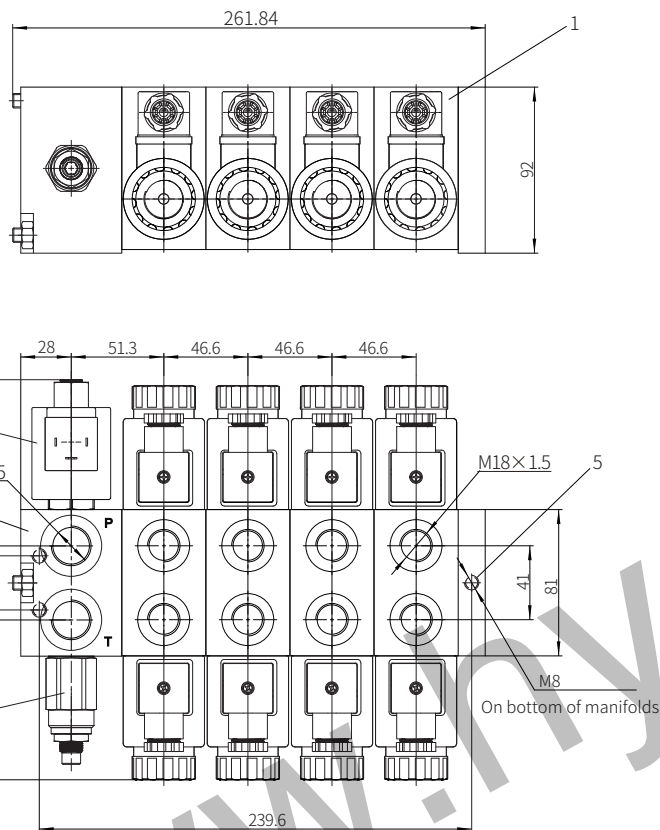
- 1 Sectional directional valve
- 2 Oil inlet section
- 3 Optional relief valve
- 4 Working port G3/8"
- 5 Inlet and outlet port G3/8"
- 6 Pressure measuring port G1/4"
- 7 Manual operated handle

Functional principle:



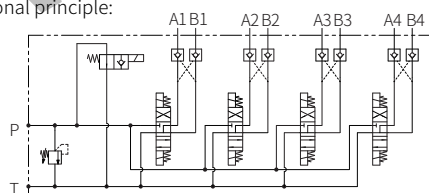
Note: The corresponding work units can be added according to the requirements from the customers.

Model DCF6J-1XJ/...YS...



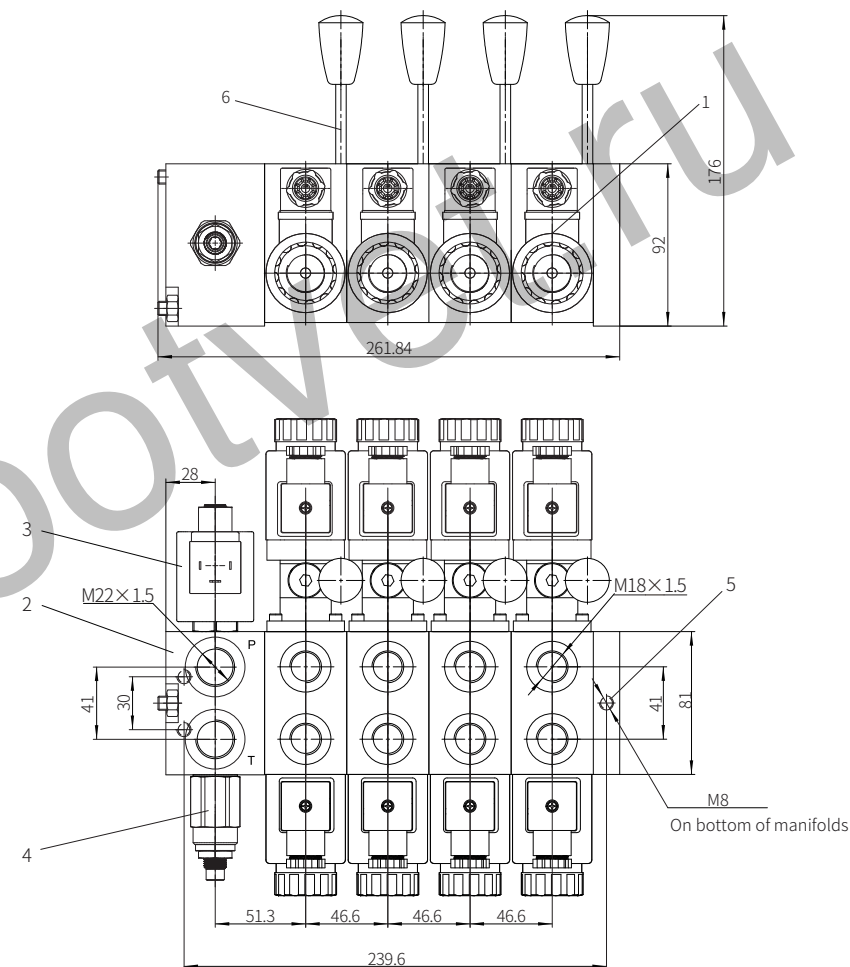
Functional principle:

- 1 Sectional solenoid directional valve
- 2 Oil inlet section
- 3 Unloading solenoid valve
- 4 Relief valve
- 5 Screw connecting holes



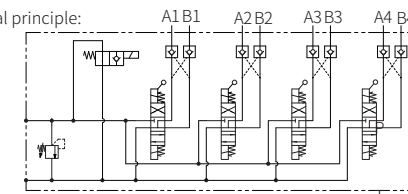
Note: The corresponding work units can be added according to the requirements from the customers.

Model DCF6J-1XJ/...MYS...



Functional principle:

- 1 Sectional solenoid directional valve
- 2 Oil inlet section
- 3 Unloading solenoid valve
- 4 Relief valve
- 5 Screw connecting holes
- 6 Manual operated handle



Note: The corresponding work units can be added according to the requirements from the customers.